 This product is printed on environmentally friendly recycled paper.



Injection Molding Make Easy



宁波甬江塑机有限公司
NINGBO YONGJIANG PLASTIC MACHINERY CO.,LTD

Tel: +8618958305290(wechat/whatsapp)
Web: www.yongjiangimm.com
Email: yongjiangimm@gmail.com



包装
Packaging



家电和电子产品
Appliances & Electronics



日用品
Houseware



医疗
Medical



工业塑料制品
Industrial plastic products

WE ARE DEDICATED TO BEING AN ADVANCED EFFICIENT INJECTION MOLDING ONE-STOP MANUFACTURER WITH GLOBAL OUTREACH

致力成为全球领先的
注塑机整体解决方案供应商



Company Looking Far Ahead

企业·致远

甬江塑机是目前中国生产注塑机的大型企业之一，建厂已有二十余年，现有总资产2亿多元，占地面积两百余亩，科技人员百余名。企业以生产甬江牌系列注塑成型机为主要产品，产品畅销全国各地并远销东南亚及欧美等国家。近年来，公司立足于市场，服务于大众，不断进取，努力提高产品的品质和档次。

公司主要生产注射45克-10000克、锁模力40T-1600T注塑机三十余种型号，年产2500台以上系列产品，公司多年来不断创新，每年均推出4-6个新产品并深受客户的欢迎。

公司注重管理，狠抓质量，YJ系列注塑机被评为市级名牌产品，达到国内外同类产品的先进水平，主要技术参数达到行标优等品。公司的三星计量、标准化和全面质量管理，基础管理都达标1997年2月就通过了ISO9001质量体系认证及CE认证。

甬江塑机公司在取得多年较好经济效益的同时，也赢得了较好的社会声誉，先后被评为浙江省重点骨干企业，浙江省最大行业企业，浙江省最佳经济效益企业，甬江集团公司2002年进入宁波市百家重点企业，浙江省高新技术企业。

Having a history of more than 20 years, yongjiang plastic machinery co., ltd is one of the largest plastic injection machine manufacturers in china at present. It occupies an area of 132000, and has total capital of over 2 billion rmb and more than one hundred technicians. With yongjiang series plastic injection machines as its main products, it sells its products not only in china, but also in southeast asia region, european and north american countries. In recent years, the company has been providing superior services for the public based on market demand and making greater effort to improve product quality.

The company mainly produces over 30 types of plastic injection machines with injection quantity from 45g to 10000g and clamping force from 40t to 1600t. It can produce over 2500 sets of machines every year. In the past years, the company has paid great emphasis on technical innovation. Meanwhile, the firm brings forth 4-6 new products every year which are very popular among customers.



PRECISION MANUFACTURING &
EXCELLENT QUALITY
精工制造 品质卓越

Assembly Shop

总装车间

- 为保证设备高效稳定地运行,把故障出现的可能降到最低,我们的品质部、技术部和调试工程师会对设备和模具进行多次试运行,确保我们的产品以最佳状态发给客户。
- 我们产品系列的不断发展和对创新技术的使用,意味着我们能为客户提供强大、具有成本效益的生产系统。
- In order to ensure the efficient and stable operation of the equipment and minimize the possibility of failure, our quality department, technical department and commissioning engineer will carry out trial operation on the equipment and mold to ensure that our products are delivered to the customer in the best condition.
- The continuous development of our product line and the use of innovative technology means that we can provide a powerful and cost-effective production system for our customers.

QUALITY CONTROL

完备的品质控制

坚持精益化生产理念,造就了每台外观品质俱佳的注塑机产品。
完备的品控系统,对产品生产各个环节进行层层把关及严格控制,实现了产品的全程质量控制,为产品质量提供了强有力的保障。

The company sticks to the lean manufacturing philosophy, yongjiang molding machine produces each injection molding machine with superb appearance and quality.
In order to achieve the whole-process quality control, Victor has developed perfect quality control system to strictly control the production process, provide strong guarantee for product quality.



Efficient Injection Molding

甬江系列伺服节能型注塑机



适用范围广
Wide range of applications



精密稳定快速
Precision and Fast



高效节能
Energy efficient



耐用可靠
Durable and Reliable



人性化
Easy to use

几乎适用于任何应用

For virtually **any application**

我们专注于满足您的需求,为您量身定制,以满足您的要求,优化生产过程控制。锁模单元,注射单元,驱动器和螺杆直径可根据机器应用进行最佳配置。

We are dedicated to meeting your needs and tailor products to meet your requirements and optimize production process control. The clamping unit, injection unit, drive and screw diameter are optimally configured for the machine application.



Optimal Design Of High-Strength Precision Clamping Structure 高强度优化设计的精密锁模结构

合理地采用有限元设计,强度更高,运行更精密

It adopts finite element design with higher strength and more precise operation

Precision Hydraulic Synchronous Template Adjusting System 液压同步精密调模系统

采用液压精密调模,使锁模压力更加精确
It adopts hydraulic precision to adjust template, which makes clamping pressure more precise

Modularized Energy Conservation High Response Oil-way System 模块化节能高响应油路系统

模块化节能高响应油路,在提高整机运行的速度的同时,又节省了能耗

Modularized energy conservation high response oil-way system could improve the speed of the complete machine and also saves energy consumption

Balanced Type Of Double Whole Transfer Oil Cylinder 平衡式双整移油缸

两侧油缸在注射时平衡受力,有效的避免了射合的向下应力带来的射嘴的偏移和漏料
The oil cylinders at both sides carry the balanced pressure during the period of injection, which efficiently avoids the excursion and leakage of the nozzle under the downward stress of the sled

Large Torque Oil Motor 大扭力油马达

大扭力设计的油马达,为各种塑料原料的良好塑化提供了保障采用优质高压油管与系统油路直联的方式,进一步减少了能量的损耗
Large torque designed oil motor provides a guarantee to good plasticizing of all kinds of plastic raw materials It adopts the direct connection type between high quality oil pressure pipe and the system oil-way to further decrease the consumption of energy

Optimized Electric System 优化的电器系统

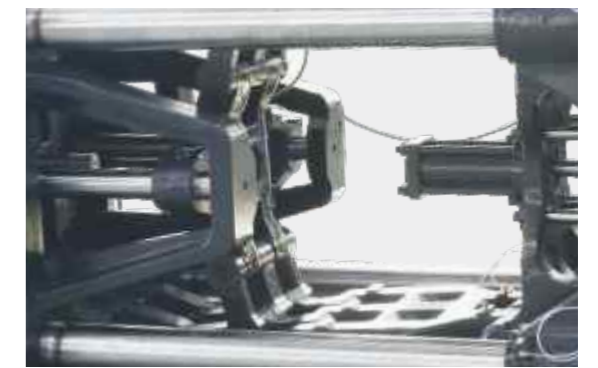
国际知名品牌的电器,控制稳定,使用寿命更加持久
International famous electric appliance controls stably, which makes the service life be longer

Clamping Unit

锁模单元

High Speed Minimal Dimensions

速度快体积小



二板式锁模单元是一个结构紧凑,节省空间的设计。另外,二板完美的无摩擦设计通过线性导轨确保最好的模板平行度以及最灵敏的模具保护。这在最大程度上确保了客户的生产安全和产品质量。

The two-plate clamping unit is a compact, space-saving design. In addition, the perfect frictionless design of the two plates ensures the best template parallelism and the most sensitive mold protection through linear guides. This ensures maximum customer safety and product quality.

1. 应油路系统/Centrally aligned toggle lever

5点双臂可确保最佳的力传递到模具安装区域的中心,甚至可以分配夹紧力。极其稳定和坚固的结构有效地防止了夹板的变形。

The 5-point double toggle lever ensures optimal transfer of force to the center of the mold mounting area and even distribution of clamping force. The extremely stable and robust construction effectively prevents deformation of the clamping plates.

3. 开模缓冲功能/Buffer for mold open

提升开模位置重复定位精度,满足机械手取件,以利于自动化持续生产。

Promoting repeated positioning accuracy for mold open.

2. 密封式循环润滑系统/Closed-loop Circulatory lubrication System

封闭式润滑系统向曲肘系统的密封轴承供应油料。润滑油从始至终都是清洁的。

The closed-loop lubrication system services the sealed bearings in the toggle lever system. Lubricating oil is cleaned continuously.

4. 灵敏的模具保护功能/Sensitive function for mold protection

配置高灵敏度低压模具保护控制单元,确保模具得到有效保护。

Configure high sensitive low-pressure mold protection unit to protect the mold efficiently.

5. 增加列间距/Increased column spacing

各立柱之间的大间距和大开模行程使叠模和高腔数模具的安装变得简单。另外,优化了模具空间,以利于采用装卸设备来拆除水平部件。

The large distance between the columns and the large opening stroke simplify the installation of stack molds and molds with large numbers of cavities. Furthermore, the mold area is optimally prepared for horizontal part removal using handling devices.

Injection Unit

注塑单元

Powerful Performance Low Energy Consumption

强大的性能低能耗



1. 优化注射单元/Optimize injection unit

- 注射机构优化设计, 提升注射刚性及稳定性。
 - 采用双射移, 射台移动采用导轨全支撑结构运行快速平滑, 提高运行精度, 确保注射的稳定性和精度。
 - 标准注射速度按欧标要求, 速度更快, 适用制品范围更广。
 - PID优化温度控制, 料管温度更加精确可控。
 - 全系列标配陶瓷发热圈, 加快升温速度, 降低能耗延长使用寿命。
- Optimizing design can improve rigidity and steady.
- Double cylinder injection system is used to ensure stability, quick response and high precision.
- According to the European standard, the injection speed can be faster, and get a wider processing range.
- A PID temperature control, precise temperature control of barrel.
- Ceramic heater is the standard outfit, can increase the speed of temperature, and prolong service life.

2. 高效塑料料管组/Efficient plasticized barrel and screw assembly

- 标配高效混炼螺杆, 实现塑化效率, 塑化质量及混色效果的极佳平衡。
 - 根据用户原料制品等特殊要求, 可选择配置各种合适的料管以达到注塑的最佳效果和效率。
- Efficient mixing screw is the standard configuration, to achieve a better balance between the efficiency of the plastic, the quality of plastic and the effect of mixing.
- According to some special demand, customer could choose some suitable screw to reach the best result.

3. 甬江提供了极致的灵活性/The YONGJIANG provides the ultimate in flexibility

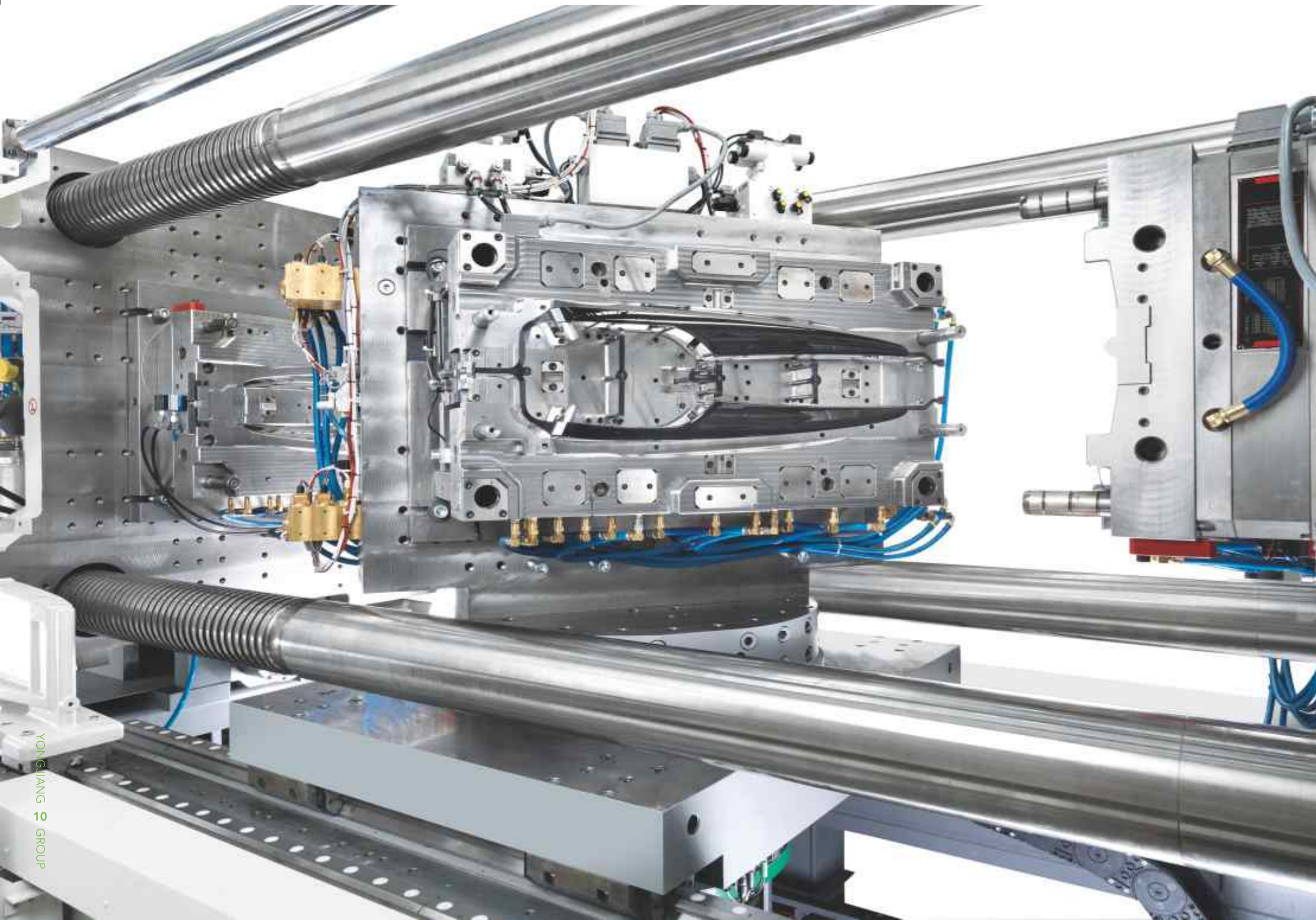
- 注射端能按照您的实际应用需求来优化定制, 注射装置和塑化装置尺寸非常多。液压注射油缸以及双阀门技术能确保卓越的注射性能, 而进料轴的伺服电力驱动能实现低电能消耗。
- The injection process can be optimally tailored to the customer's requirements with a choice of injection and plasticizing unit sizes. The injection unit's hybrid drive guarantees powerful injection performance, while the servo-electric drive of the metering axis ensures low energy consumption.

Low Energy, High Performance

低能耗、高性能、高效驱动理念

到目前为止，能源消耗的大部分来源于机器的实际操作。
甬江凭借创新原理和智能驱动技术，利用混合或全自动注塑机可大幅度的节约能量。

The actual operation of the machine is responsible for the largest proportion of its energy consumption.
Thanks to the innovative concepts of the YONGJIANG and intelligent drive technology, enormous energy savings can be achieved with hybrid or all-electric injection molding



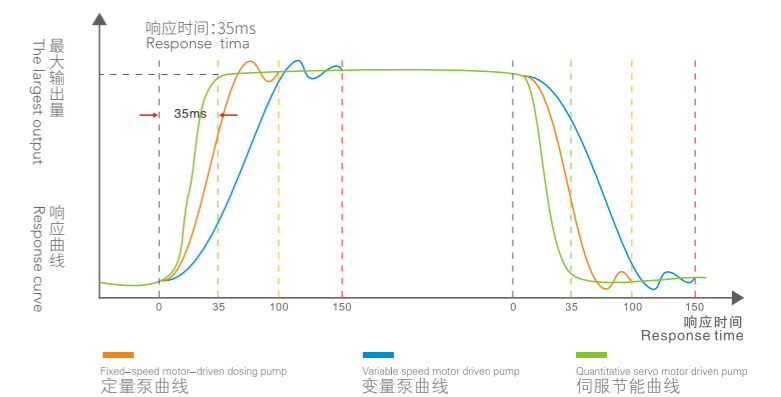
YongJiang high performance servo motor energy-saving technology

甬江高端伺服节能技术

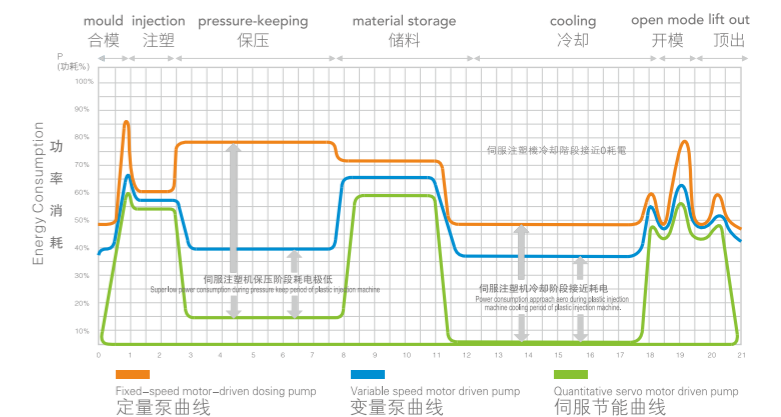
YongJiang is committed to developing innovative systems and solutions that ensure optimal energy efficiency at maximum productivity in line with our motto: "Low Energy, High Performance". Our engineer have a deep research for the servo motor energy-saving system, and choose the more optimized one, making the machine with the merits of stable, reliable, durable, energy-saving, efficient, low noise.

甬江致力于开发创新系统和解决方案，以符合我们的座右铭：“低能耗，高性能”，确保以最高生产率实现最佳能源效率。工程师对伺服节能系统进行了全面和深入的了解，并通过实验对比优化选择了雷盟高端伺服节能系统，实现稳定、可靠、耐用、节能、高效、低噪音等优良性能。

系统高速响应比照 Comparison of system high-speed response



功率消耗曲线比较图 Power consumption curve comparison chart





Injection Molding Machine For PET Preforms

瓶胚专用注塑机



1. 加大注射量，更加适合多腔制品的生产，根据不同要求量身定制，针对包装类、深腔类、高速PET瓶胚制品的生产更具优势
2. PET专用螺杆，显著提高熔胶速度和注射量，降低塑化温度，有效改善瓶胚的收缩，提高透明度
3. 加大顶针力与顶出行程，更适合深腔PET瓶胚成型

1. Increase the injection volume, which is more suitable for the production of multi-cavity products. Tailored according to different requirements, it is more advantageous for the production of packaging, deep cavity and high speed PET preform products
2. PET special screw significantly increases the melting speed and injection volume, reduces the plasticizing temperature, effectively improves the shrinkage of the preform and improves the transparency
3. Increase the thimble force and the ejection stroke, which is more suitable for deep cavity PET preform molding





Servo Energy Saving Injection Molding Machine(S series)

伺服节能型注塑机(S系列)

1. 超强节能,与普通注塑机相比,节能达20%-80%
2. 精密、稳定,配备高精度,高灵敏旋转编码器,压力传感器,分别对流量与压力进行监控与反馈
3. 高响应、高效率,伺服节能注塑机的驱动系统响应灵敏迅速,仅需0.05秒即可达到最大输出值,生产效率得到大幅度提高

1. Super-strong energy-saving, Compared with the common injection modeling machine, the energy saving reaches 20%-80%
2. Precision and stability, Equipped with high precision, the high sensitivity rotary encoder, pressure sensor monitor and feedback the flow and pressure respectively
3. High response and high efficiency, The driving system of the servo energy-saving injection modeling machines respond sensitively and fast, it only needs 0.05 seconds to reach the maximum output value, and the production efficiency is improved to the maximum extent



High-Speed Injection Molding Machine(F series)

甬江高速注塑机(F系列)



1. 强大的注射能力,最大注射速度在300m/s到500m/s,注射加速度在10m/s左右
2. 高精度,位置、压力的闭环控制能确保注射和计量的重复精度误差极小,甬江F系列注塑机得以实现高压低速、低压高速和高压高速等运行,适合生产快餐盒、镜片及电子精密产品等

1. Powerful inject ability, The maximum injection speed is 300 mm/s-500 mm/s, and the injection accelerated speed is around 10 m/s
2. High precision, The closed-loop control of position and pressure can ensure the minimum repeated accuracy error of injection and measurement Yongjiang injection molding machine(F series) can realize the operatio of high pressure vs. low speed, low pressure Vs. high speed and high pressure vs. High speed and is suitable for the production of snack box, lens, electronic precision products, etc

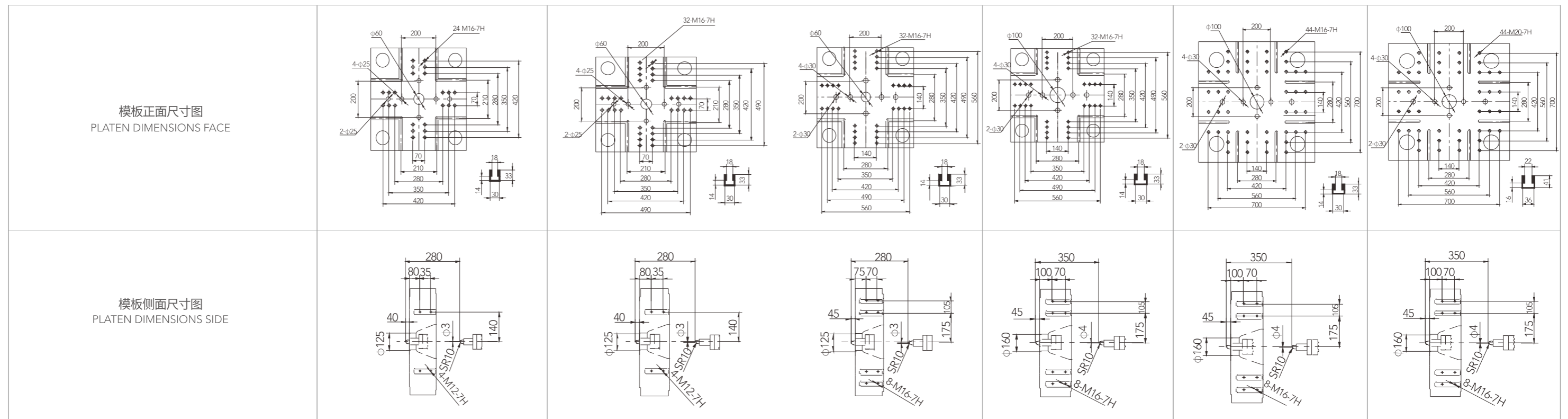


Technical Parameters

技术参数

例Case :
 YJ(*)100
 ↳ 锁模力Clamping force
 ↳ L双比例电脑控制注塑机L dual-ratio computer control injection molding machine
 ↳ S伺服节能注塑机Servo-energy saving injection modeling machine
 甬江系列注塑机
 Yongjiang Series of Injection Modeling Machine

机器型号	MACHINE MODEL	单位/Unit	YJ(*)100			YJ(*)130			YJ(*)160			YJ(*)200			YJ(*)230			YJ(*)260		
			I	II	III	I	II	III	I	II	III	I	II	III	I	II	III	I	II	III
注射装置	Injection Device																			
螺杆直径	Screw Diameter	mm	36	40	42	40	42	45	41	43	45	45	48	52	48	52	55	52	55	60
螺杆长径比	Screw Diameter Ratio	L/D	24.3	21.9	20.3	21.7	20.7	19.3	21.3	20.3	19.4	24.8	23.3	21.5	21.1	19.5	18.4	23.1	21.8	20
理论注射容积	Theoretical Shot Volume	cm ³	162	201	221	232	256	294	277	304	333	373	425	498	452	530	593	573	641	763
注射重量(PS)	Injection Weight(PS)	g	148	182	201	211	233	267	252	277	303	340	387	453	411	482	540	521	583	694
注射速率(PS)	Injection Rate(PS)	g/s	78	97	107	97	107	123	118	130	142	142	162	190	146	172	192	186	210	238
注射压力	Injection Pressure	Mpa	222	180	163	180	163	142	182	166	151	188	165	140	182	155	138	189	169	142
塑化能力(PS)	Plasticizing Capacity(PS)	g/s	13	15	16	15	16	19	16	18	21	20	22.3	24	24	27	30	27	29	31
螺杆转速	Screw Speed	rpm	185			185			230			215			180			170		
锁模装置	Clamping Unit																			
锁模力	Clamping Force	KN	1000			1300			1600			2000			2300			2600		
移模行程	Togglestroke	mm	340			380			420			436			500			560		
拉杆内间距	Space Between Tie-bars	mm*mm	360*360			410*410			440*440			460*460			520*520			580*580		
最小-最大模厚	Min-max Mould Thickness	mm	150-350			150-430			180-450			180-500			200-530			220-580		
顶出行程	Ejection Stroke	mm	105			120			130			140			140			140		
顶出力	Ejecting Force	KN	38			38			45			70			70			70		
顶出杆根数	Ejector Number	PC	5			5			5			5			5			5		
其他	Other																			
最高系统压力	Maximum System Pressure	Mpa	16			16			16			16			16			16		
油泵电机功率	Oil Pump Motor Power	KW	10.5			10.5			15.7			20.5			20.5			26.7		
电热功率	Heater Power	KW	8.8			10.6			10.55			16.5			14.5			18.6		
油箱容积	Oil Tank Capacity	Kg	200			200			250			300			300			400		
机器外形尺寸(约)	Overall Dimension(About)	mm	4360*1100*1885			4600*1150*1885			4850*1250*1960			5200*1457*2036			5540*1480*2160			5950*1550*2160		
机器重量(约)	Machine Weight(About)	t	3.4			3.8			4.7			5.7			6.8			7.8		

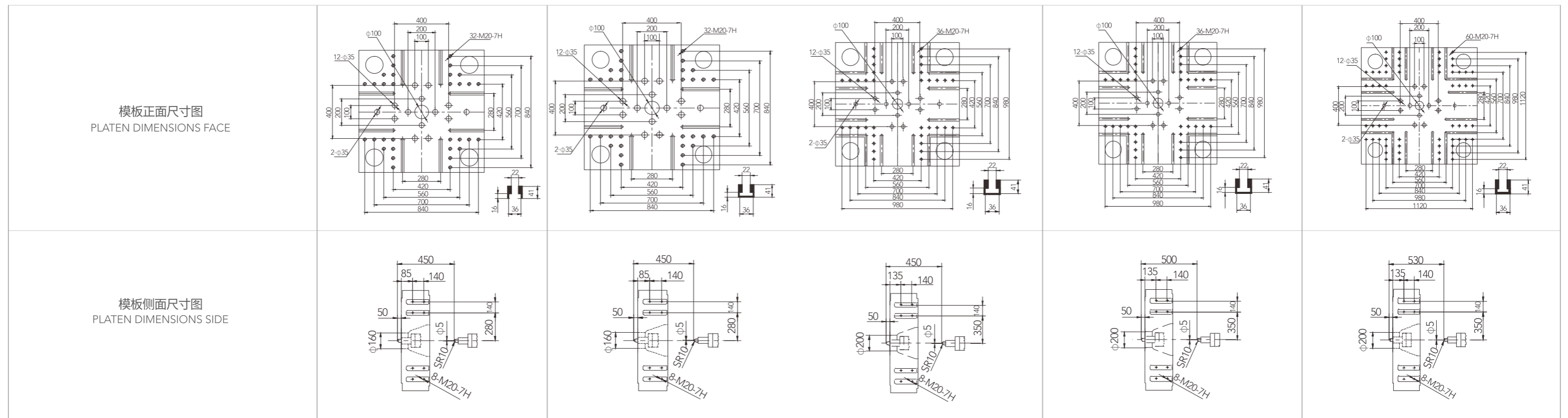


Technical Parameters

技术参数

例Case :
 YJ(*)100
 ↳ 锁模力Clamping force
 ↳ L双比例电脑控制注塑机L dual-ratio computer control injection molding machine
 ↳ S伺服节能注塑机Servo-energy saving injection modeling machine
 甬江系列注塑机
 Yongjiang Series of Injection Modeling Machine

机器型号	MACHINE MODEL	单位/Unit	YJ(*)300			YJ(*)360			YJ(*)400			YJ(*)480			YJ(*)550		
注射装置	Injection Device		I	II	III	I	II	III	I	II	III	I	II	III	I	II	III
螺杆直径	Screw Diameter	mm	60	65	70	65	70	72	70	75	80	75	80	85	80	85	90
螺杆长径比	Screw Diameter Ratio	L/D	25.2	23.3	21.6	23.3	21.6	21	21.4	20	18.8	23.5	22	20.7	23.4	22	20.8
理论注射容积	Theoretical Shot Volume	cm ³	847	995	1154	1127	1307	1383	1423	1634	1859	1876	2135	2410	2210	2495	2797
注射重量(PS)	Injection Weight(PS)	g	771	905	1050	1026	1190	1259	1295	1487	1692	1707	1943	2193	2011	2270	2545
注射速率(PS)	Injection Rate(PS)	g/s	238	279	324	260	301	319	323	371	422	391	445	502	416	470	527
注射压力	Injection Pressure	Mpa	198	169	145	181	156	148	182	158	139	179	158	140	184	163	145
塑化能力(PS)	Plasticizing Capacity(PS)	g/s	31	35.3	39.8	35.3	39.8	45	45	51	59	51	54	58	56	62	68
螺杆转速	Screw Speed	rpm	140			140			150			120			120		
锁模装置	Clamping Unit																
锁模力	Clamping Force	KN	3000			3600			4000			4800			5500		
移模行程	Togglestroke	mm	610			660			730			770			840		
拉杆内间距	Space Between Tie-bars	mm*mm	630*630			680*680			720*720			780*780			830*830		
最小-最大模厚	Min-max Mould Thickness	mm	250-630			280-680			280-750			320-780			350-850		
顶出行程	Ejection Stroke	mm	160			180			180			200			220		
顶出力	Ejecting Force	KN	90			110			110			110			150		
顶出杆根数	Ejector Number	PC	13			13			13			13			13		
其他	Other																
最高系统压力	Maximum System Pressure	Mpa	16			16			16			16			16		
油泵电机功率	Oil Pump Motor Power	KW	35.6			35.6			48.2			26.7+24.1			26.7+26.7		
电热功率	Heater Power	KW	27.2			29			25.6			37			41		
油箱容积	Oil Tank Capacity	Kg	520			520			600			800			900		
机器外形尺寸(约)	Overall Dimension(About)	mm	6900*1665*2100			7200*1860*2350			7600*1860*2360			8500*1865*2505			9300*2070*2500		
机器重量(约)	Machine Weight(About)	t	11			13			15			18			22		

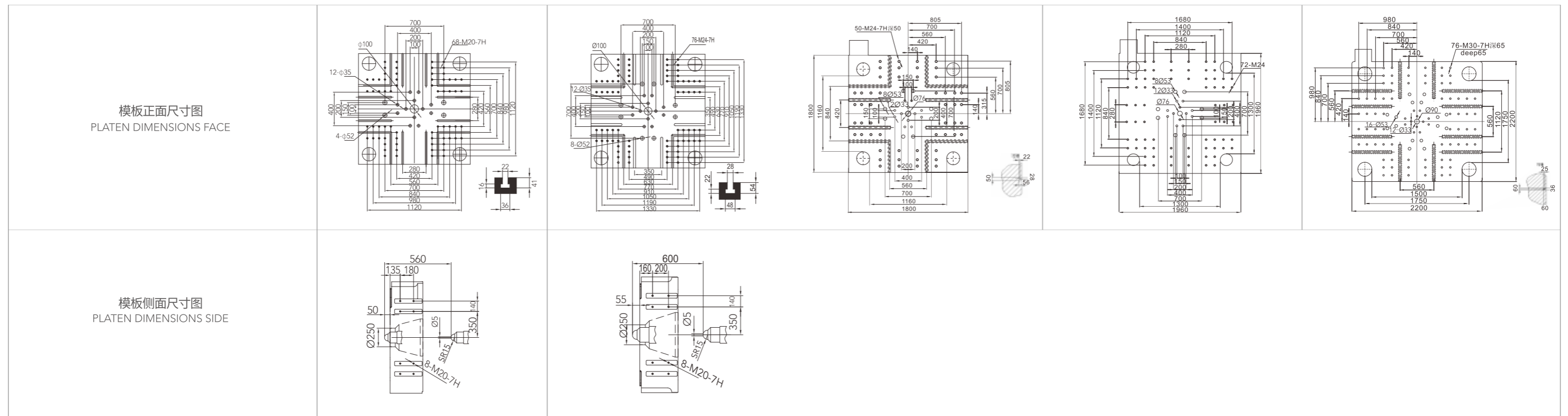


Technical Parameters

技术参数

例Case :
 YJ(*)100
 ↳ 锁模力Clamping force
 ↳ L双比例电脑控制注塑机L dual-ratio computer control injection molding machine
 ↳ S伺服节能注塑机Servo-energy saving injection modeling machine
 甬江系列注塑机
 Yongjiang Series of Injection Modeling Machine

机器型号	MACHINE MODEL	单位/Unit	YJ(*)680			YJ(*)850			YJW11000			YJT13000			YJW16000		
			I	II	III	I	II	III	I	II	III	I	II	III	I	II	III
注射装置	Injection Device																
螺杆直径	Screw Diameter	mm	90	95	100	100	110	120	110	120	130	110	120	130	130	140	150
螺杆长径比	Screw Diameter Ratio	L/D	23.6	22.4	21.3	24.4	22.2	20.3	24	22	20.3	23.8	22	20.2	23.7	22	20.5
理论注射容积	Theoretical Shot Volume	cm ³	2924	3258	3611	4003	4844	5765	4000	5600	6320	4600	6300	7800	8000	9500	11000
注射重量(PS)	Injection Weight(PS)	g	2661	2965	3286	3643	4408	5246	3780	5292	5972	4200	5755	7130	7560	8978	10395
注射速率(PS)	Injection Rate(PS)	g/s	498	555	614	549	663	790	760	904	974	803	951	1048	1107	1284	1474
注射压力	Injection Pressure	Mpa	180	162	146	201	166	140	169	142	132	204	172	146	174	150	131
塑化能力(PS)	Plasticizing Capacity(PS)	g/s	74	78	84	86	102	108	98.3	122.3	149.8	101.5	124	140	149.8	173.8	199
螺杆转速	Screw Speed	rpm		120			84			80			100			80	
锁模装置	Clamping Unit																
锁模力	Clamping Force	KN		6800			8500			11000			13000			16000	
移模行程	Togglestroke	mm		920			1020			1220			1360			1530	
拉杆内间距	Space Between Tie-bars	mm*mm		920*920			1030*1030			1160*1160			1300*1300			1500*1500	
最小-最大模厚	Min-max Mould Thickness	mm		400-920			450-1030			520-1250			550-1360			650-1450	
顶出行程	Ejection Stroke	mm		280			300			330			360			405	
顶出力	Ejecting Force	KN		180			210			280			280			400	
顶出杆根数	Ejector Number	PC		17			21			21			21			29	
其他	Other																
最高系统压力	Maximum System Pressure	Mpa		16			16			16			16			16	
油泵电机功率	Oil Pump Motor Power	KW		35.6+31.4			48.2+35.6			31+31+31			31+44+44			48.2+48.2+48.2	
电热功率	Heater Power	KW		51			70.2			65.7			65.7			96.1	
油箱容积	Oil Tank Capacity	Kg		820			1135										
机器外形尺寸(约)	Overall Dimension(About)	m		10.2*2.3*2.53			11.7*2.54*2.74			13.11*2.73*4.24			13.55*2.88*4.13			15.99*3.3*4.56	
机器重量(约)	Machine Weight(About)	t		28			37			61.5			78			102	

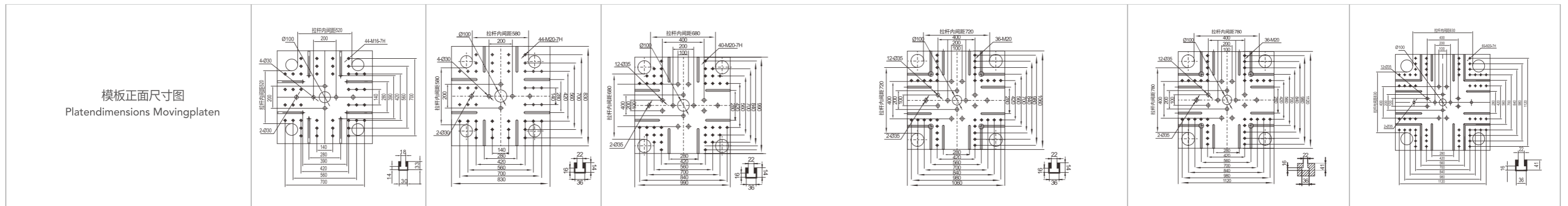


PET Preforms Technical Parameters

PET瓶胚技术参数

例Case :
 YJ(*)100
 ↳ 锁模力Clamping force
 ↳ L双比例电脑控制注塑机L dual-ratio computer control injection molding machine
 ↳ S伺服节能注塑机Servo-energy saving injection modeling machine
 甬江系列注塑机
 Yongjiang Series of Injection Modeling Machine

机器型号	MACHINE MODEL	单位/Unit	YJPT230	YJPT260	YJPT360组合式		YJPT400组合式			YJPD 400	YJPT480组合式			YJPT550组合式		
注射装置	Injection Device				A2000	A3100	A2000	A3100	HA4300	HP3100	A2000	A3100	HA4300	A3100	A4000	HA4300
螺杆直径	Screw Diameter	mm	62	72	82	95	82	95	105	95	82	95	105	95	105	105
螺杆长径比	Screw L/D Ratio	L/D	24:1	24:1	24:1	24:1	24:1	24:1	24:1	24:1	24:1	24:1	24:1	24:1	26:1	24:1
理论注射容积	Theoretical Shot Volume	cm ³	814	1300	2060	3119	2060	3119	4329	3119	2060	3119	4329	3119	4329	4329
注射重量(PET=1.02)	Injection Weight(PS)	g	912	1456	2307	3493	2307	3493	4849	3493	2307	3493	4849	3493	4849	4849
注射行程	Injection Stroke	mm	270	320	390	440	390	440	500	440	390	440	500	440	470	500
注射压力	Injection Pressure	Mpa	131	137	132	133	132	133	133	134	132	133	133	133	132	133
锁模装置	Clamping Unit															
锁模力	Clamping Force	KN	2300	2600	3600		4000			4000	4800			5500		
移模行程	Togglestroke	mm	500	560	660		730			730	770			840		
拉杆内间距	Space Between Tie-bars	mm	520*520	580*580	680*680		720*720			720*720	780*780			830*830		
最小-最大模厚	Min-max Mould Thickness	mm	220~550	250~610	280~680		280~830			280~830	380~860			380~850		
顶出行程	Ejection Stroke	mm	170	170	190		230			230	250			250		
顶出力	Ejection Force	KN	102	102	180		180			180	180			246		
其他	Other															
最高系统压力	Max. System Pressure	Mpa	16	16	16	16	16	16	16	16	16	16	16	16	16	16
电机功率	Motor Power	KW	31.4(伺服)	48.2(伺服)	55.2(伺服)	79.3(伺服)	55.2(伺服)	79.3(伺服)	107.9(伺服)	130.9(伺服)	55.2(伺服)	79.3(伺服)	107.9(伺服)	79.3(伺服)	107.9(伺服)	107.9(伺服)
电热功率	Heating Power	KW	31.1	35.7	53.9	70.6	53.9	70.6	85.5	70.6	53.9	70.6	85.5	70.6	85.5	85.5
外形尺寸(长*宽*高)	Machine Dimensions	m	6.36*1.5*2.16	7.18*1.64*2.26	8.2(8.5)*1.86*2.36		8.9(9.2)(10.55)*1.95(2.24)*2.5			9.69*1.93*2.27	9.8(10.0)(10.55)*1.95(2.24)*2.5			9.7(10.3)(11.0)*2.13(2.28)*2.45		
机器重量	Machine Weight	T	7.5	8.6	14	14.5	15	16.5	18	16.3	17	18	20	25	26	22.3



YONGJIANG Services

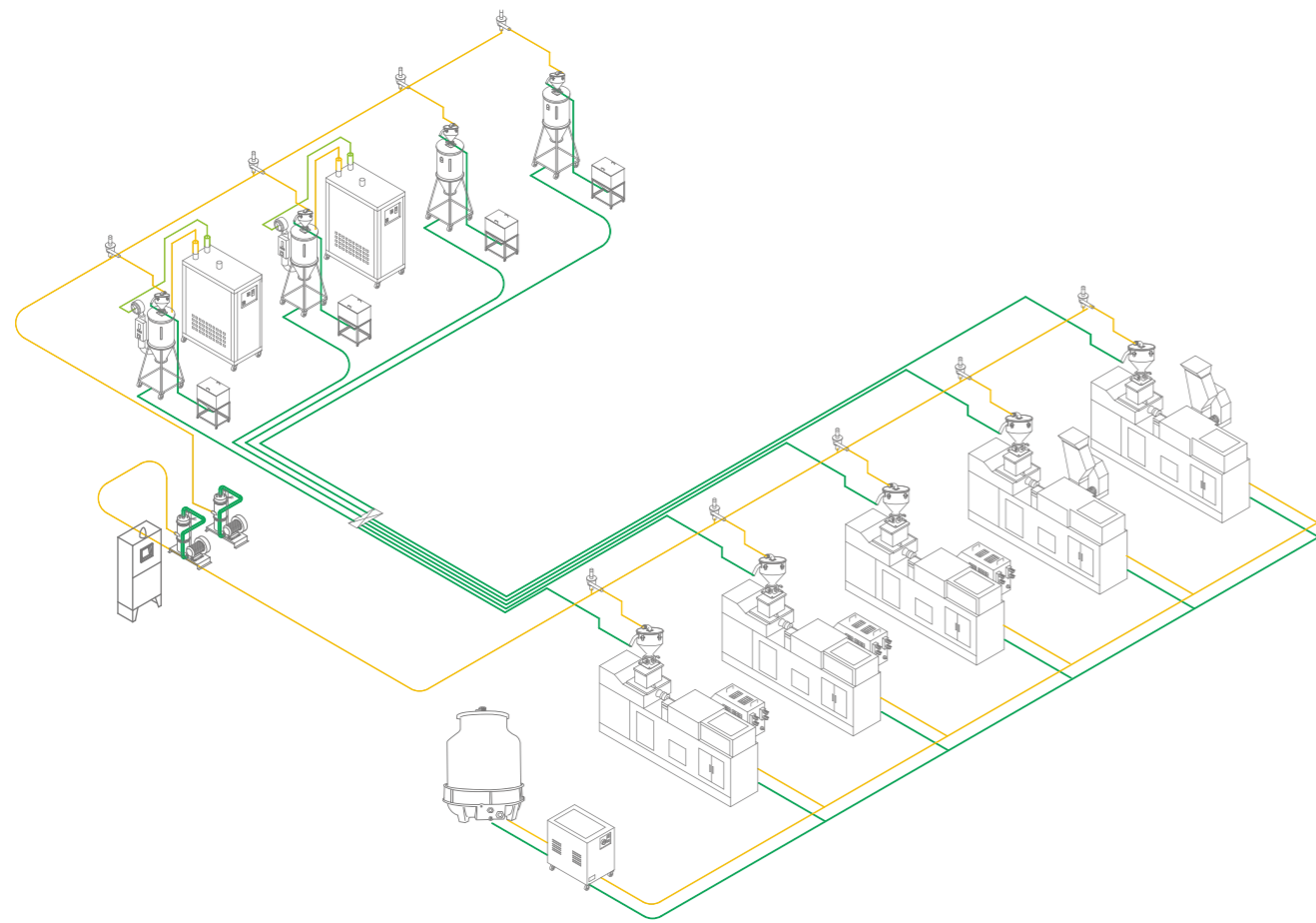
甬江超值服务体验

Less energy, optimum cost-effectiveness

更低的能耗, 最佳的成本效益

我们的服务可帮助您提升生产线、员工及成本的灵活性。我们为您设计全新的包装, 快速高效地实现生产线转换, 使您在最短的时间内提升设备性能, 生产更多产品或换型生产不同的产品。我们还能帮您进行维护和培训, 根据您的需求不断升级和优化生产线。

Our services help you increase the flexibility of your production lines, employees and costs. We can design new packaging for you to achieve fast and efficient line conversion, so that you can improve equipment performance in the shortest time, produce more products or change production to produce different products. We can also help you with maintenance and training, and continuously upgrade and optimize your production line according to your needs.



甬江注塑机业务遍布欧洲、美国、澳大利亚、加拿大等世界发达国家及地区。基于‘科技领先, 优质高效, 顾客至上’的经营理念, 美好注塑&后加工赢得了客户的好评, 并连续多年获得客户最佳供应商的奖项。

通过经验保证。清洁, 精确, 安静, 快速, 动态的全电动机给人留下深刻的印象, 包括高能效。

Yongjiang Injection molding machine business spread world widely, such as Europe, American, Australia, Canada etc. Basing on the principle of "high technic, high efficiency, customer first", we reputed by our customer and won the wards of the best supplier for years. Assurance through experience. Clean, precise, quiet, fast, dynamic all-electri cal motors are impressive, including the energy efficiency.