

General catalogue



ALL KING
— Ceramics —

淄博奥经进出口贸易有限公司简介

淄博奥经进出口贸易有限公司成立于2011年，总部位于山东淄博，是一家专注于建筑陶瓷进出口的专业贸易企业。公司深耕全球建材市场十余年，通过整合优质供应链资源，为海外客户提供高端建筑陶瓷产品及定制化采购解决方案，涵盖瓷砖、卫浴陶瓷、装饰陶板等品类，产品符合国际标准ISO9001及行业环保认证，远销欧美、东南亚等20余个国家和地区。

现公司分为国贸部与国内营销部，主要负责各类瓷砖以及马赛克等的出口销售与国内销售业务，公司坐落于中国财富陶瓷城6期宝莱纳陶瓷展厅，总面积2000多平方米，分为样品展示区与样板间展示区，产品多样化，满足不同消费群体的购买需求。企业本着“倡导高雅新生活”的品牌宗旨，紧跟时代步伐，以锐利的市场眼光，超前的发展策略，先进的服务意识，精心打造“ALL-KING”“宝莱纳”等瓷砖品牌。

质量管控体系是公司核心优势：

1. 供应链严选：合作供应商均通过资质审查、生产稳定性评估及质量体系认证，确保原材料与生产工艺符合国际标准；
2. 全流程检验：实施“三次检验机制”（生产抽样、过程监控、出厂终检），并委托独立检测机构出具合规报告，杜绝不合格品流通；
3. 持续改进：建立客户反馈闭环系统，24小时内响应投诉，通过数据分析驱动产品与流程优化。

服务特色----聚焦高效与定制化：

1. 一站式服务：覆盖需求分析、物流清关、售后支持全链条，提供技术咨询；
2. 敏捷响应：合同履行全程数字化跟踪，确保订单交付准时率超98%。

公司以“客户至上，精益求精”为理念，致力于成为建筑陶瓷全球供应链的可靠伙伴。

ALL-KING CERAMIC COMPANY PROFILE

Established in 2011 and headquartered in Zibo, Shandong, Zibo Allking Import & Export Trading Co., Ltd. specializes in the global trade of building ceramics. With over a decade of expertise, the company sources premium tiles, sanitary ceramics, and decorative panels from certified suppliers, serving clients across Europe, North America, and Southeast Asia. All products comply with ISO9001 and international environmental standards.

The company is currently divided into an export department and a domestic sales department, mainly responsible for the export and domestic sales of various types of tiles and mosaics. The company is located in the Paulaner Ceramic Exhibition Hall of China Fortune Ceramic City, with a total area of over 2000 square meters. It is divided into a sample display area and a sample room display area, with diversified products to meet the purchasing needs of different consumer groups. The enterprise adheres to the brand tenet of "advocating an elegant new life", keeps up with the step of the times, with a sharp market vision, advanced development strategy, and advanced service awareness, and carefully creates ceramic tile brands such as "ALL-KING" and "PAULANER".

Quality Control Excellence:

1. Rigorous Supplier Screening: Partners undergo evaluations for production capability, quality certifications, and compliance history;
2. Three-Tier Inspection: Implementing pre-production sampling, in-process monitoring, and pre-shipment final checks, with independent lab reports for each batch;
3. Continuous Improvement: A 24-hour customer complaint response system drives data-led refinements in products and processes.

Service Differentiation:

1. End-to-End Solutions: Integrated services span demand analysis, customs clearance, and after-sales support, with technical consulting;
2. Agile Execution: Digital order tracking ensures >98% on-time delivery rate.

Guided by the principle "Customer First, Excellence Always," the company commits to being a trusted partner in the global building ceramics supply chain.

Brand.

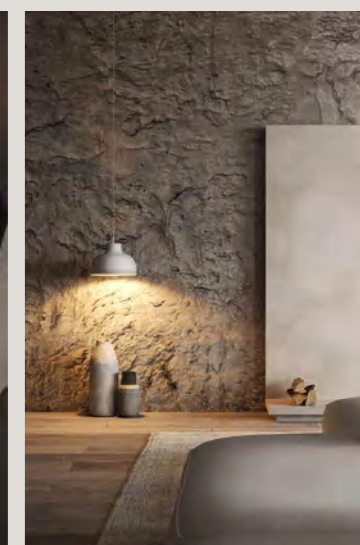
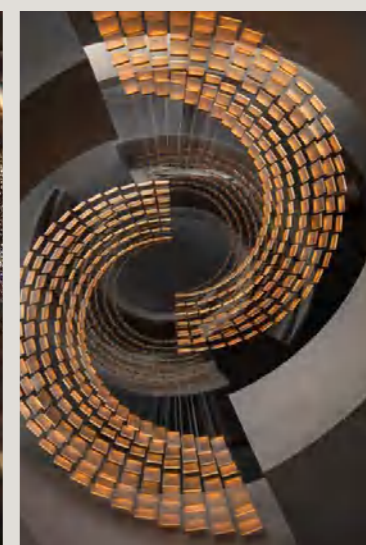
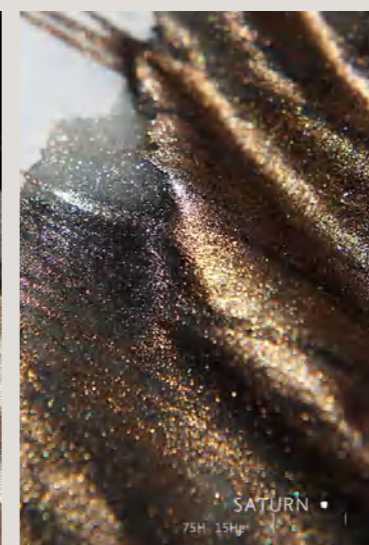
奥经瓷砖是一家具有全球资源整合能力
根植于中国的全球化瓷砖品牌

Rooted in China for more than 10 years, Allking holds a long-term vision for adopting a global perspective, in line with the intention to resource intergration



Design Elements

八大设计元素



MARBLE
理石

CONTEMPORARY
现代元素

STONE
名石

LUXURY
奢品

WOOD
木纹

WALL CRAFT
墙饰

ARTWORK
艺术精品

CEMENT
水泥

Design Elements

DESIGN

升级工艺面

ELEMENTS



全抛釉

结合超耐磨釉料与精密抛光工艺让产品极致诠释透、亮、平、硬特点自然光下呈现出宝石般光泽



复刻釉

采用石材模型复刻工艺高精度还原石材肌理细节结合云绒质感釉料营造舒适光感



数码精雕

通过精细粒子工艺处理精准刻画出石材纹理层次细节赋予产品细腻真实的天然质感



半抛工艺

超分子釉料通过特殊研磨技术精准捕捉石材的微妙起伏打造凹凸微模的原生触感



干粒工艺

精研干粒熔附于坚实坯体构筑细腻而丰富的立体触面漫射自然光线，流淌温润如玉的哑光韵致



刷抛工艺

立体智控 3D 喷釉复刻高清精准呈现肌理层次和凹凸质感完美匹配功能性墨水的叠加效果



柔抛工艺

砖面呈现温润舒适层次丰富立体感强细腻肌理细节更具设计感



深刻模具

10-20 度护眼柔光精准捕捉石材肌理起伏细节多维复刻自然元素的肌理质感



哑光釉

10-20 度护眼柔光纹理层次丰富立体细腻天然石材肌理的全新演绎



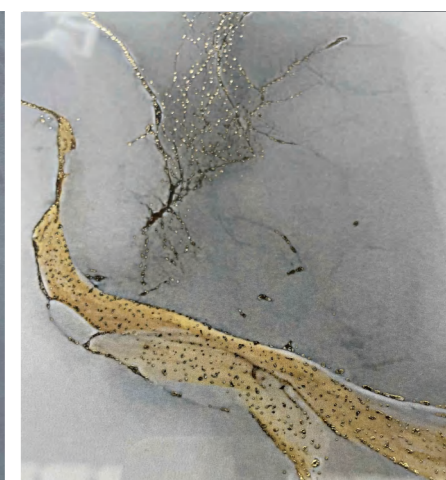
闪粉工艺

结合超耐磨全抛釉与创新闪粉工艺透亮平整之上，密布跃动的奢华光点于极致光亮中，绽放层次分明的奢华维度



星亮石工艺

融合超耐磨哑釉与精密星亮石嵌熔成就温润、防滑、耐磨、星璨特性静观时沉稳大气，动观间星光流转



金丝工艺

细腻金丝如笔触勾勒石纹脉络超平表面映衬下更显立体深邃为空间点睛，流淌静谧而尊贵的气息



精雕面

CTD 数码精雕 + CNC 精控施釉

数字化精准定位
智控深浅肌理结构

色泽、纹理、肌理三位一体
肌理呈现浅亮光泽
砖面表现自然立体



模具面

多维深刻模具 + 高析度无光透明釉

全方位复刻原素细节
打破刻板失真局限

凸显砖面层次丰富
营造多维立体效果
真石质感真实触感



琥珀面

双轴立体柔抛 + 复合精细微粒子

双轴立体弧面海绵磨头
多重立体柔性抛光

凹凸有致砖面肌理
羊绒般温润亲肤
纵享丝滑细腻触感

TECHNICAL 面相工艺 *SURFACE*



柔光面

超平滑防污粒子层 + 进口高析度柔光釉

柔光护眼防污易洁
低反光度舒适视觉

质感更润泽
光感更柔和
触感更细腻



柔抛面

智感柔抛工艺

柔润质感柔顺触感
肌理清晰通透层次感强

与光照形成轻柔浪漫的漫反射
表达低调而克制
护眼柔和，绿色环保



半抛面

静磁半抛工艺 + 变频双旋转磨头

细砂糖般微颗粒质感
手感清爽脚感舒适

砖面呈现微微细闪光感
表面层次感强、立体光亮
赋予空间天然的砂岩质感



珍珠面

西班牙纳米珠光釉 + 精细柔性软抛

进口纳米级珠光釉
特殊超耐磨干粒刷头

呈现 15°柔和珍珠光泽
自然微光雅致柔和
健康护眼视觉舒适



哑光面

矿物生料哑光釉 + 纳米级凹槽防滑层

柔哑顺滑触感
高标安全防滑

独特细腻哑光质感
高系数防滑配置
空间功能个性兼备



亮光面

静磁全抛工艺 + 进口耐磨防滑釉

结合易洁耐磨防滑釉料
优化产品性能结构

光洁平整不易藏污
空间明亮奢华大气



炫光面

高渗透深刻墨水 + 西班牙进口炫彩釉

多角度幻彩变化
营造独特家居光泽

随光线变化呈现波光粼粼质感
光感层次立体丰富
置身轻奢梦幻的光影世界



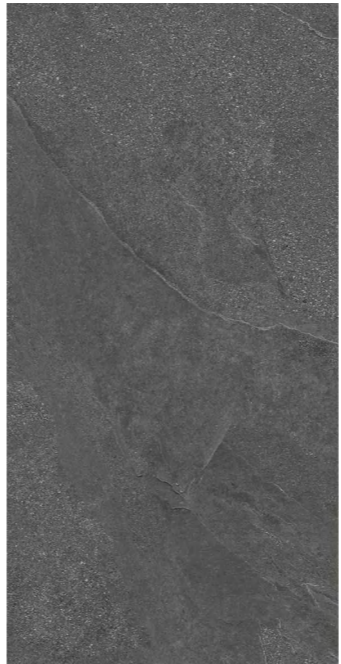
肌肤面

高频多向研磨工艺 + 科技羊脂柔肤釉

特制羊脂柔肤粒子
雾化级釉料细腻度

丝滑柔润的肌肤质感
触感细节更真实
重新定义质感家居生活





AK126020
-DARKGREY
4 faces



AK126020
-GREY
4 faces

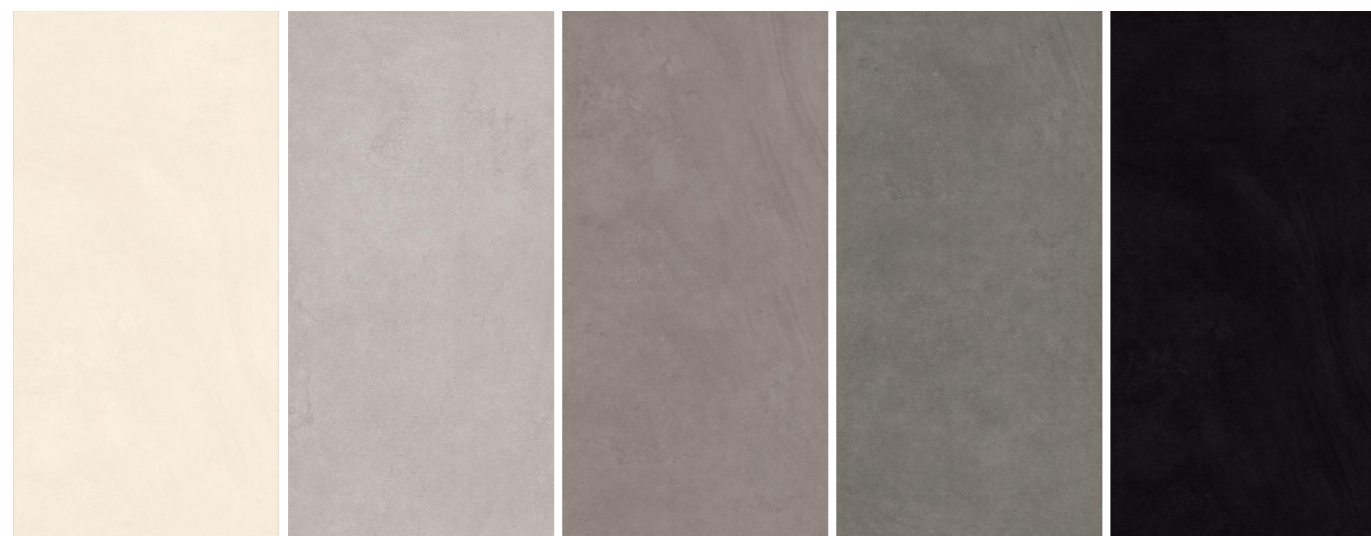


AK126020
-LIGHTGREY
4 faces



AK126020
-MF 4
faces

仿古
Matte



6A1-BEIGE
5 faces

6A1-GERY
5faces

6A1-COFFEE
5 faces

6A1-ANTRACITE
5 faces

6A1-NEGRO
5 faces



CA126005-BLACK
6 faces



CA126005-GERY
6 faces



CA126005-LIGHTGERY
6 faces



CA126005-MF
6 faces

仿古 Matte



612092
4 faces



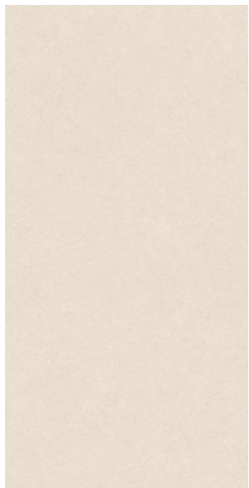
BULSTONE-CREAM
8 faces



CF126006-MF
3 faces



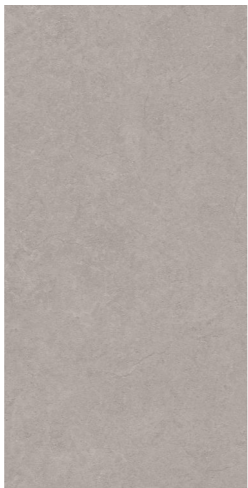
ITC96111-C
6 faces



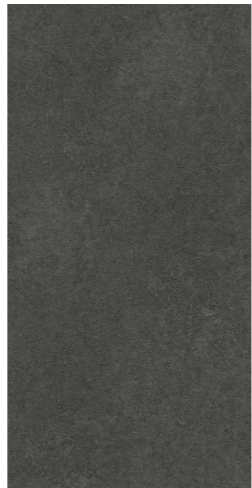
CW126806
-MF
4 faces



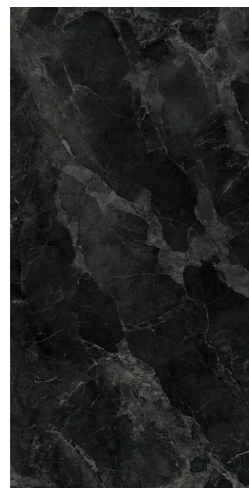
CW126806
-LIGHTGERY
4 faces



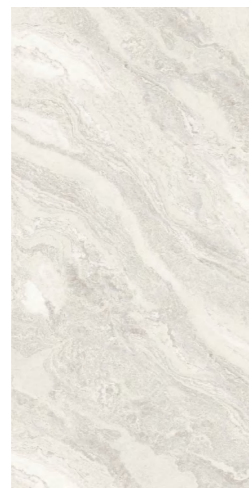
CW126806
-GERY
4 faces



CW126806
-DARKGERY
4 faces



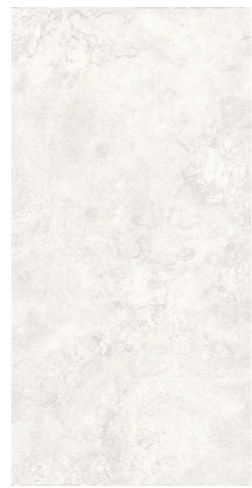
MX126281
4 faces



FS126014
4 faces



TDD126003M
2 faces



TSS126003M
2 faces



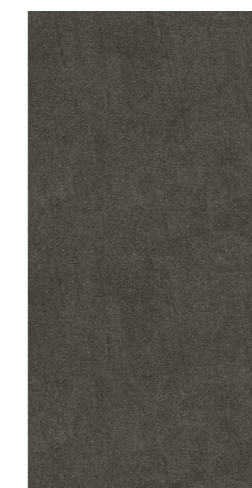
CLS126001
random face



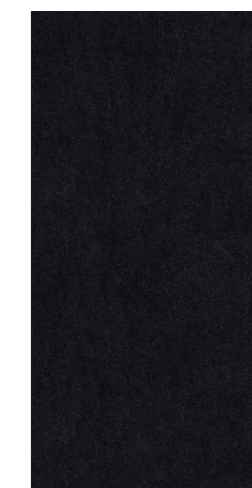
CLS126002
random face



CLS126003
random face



CLS126004
random face



CLS126005
random face

仿古 Matte



PURE126
-MF 4
faces



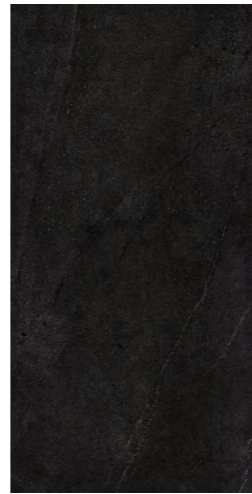
PURE126-
LIGHTGERY
4 faces



PURE126
-GERY
4 faces



PURE126-
DARKGERY
4 faces



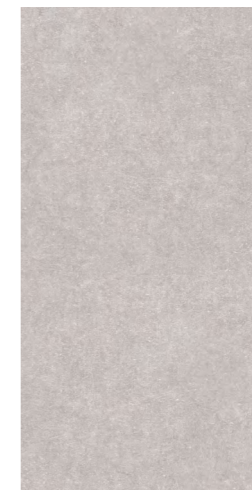
PURE126
-BLACK
4 faces



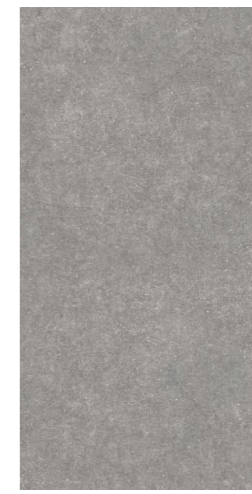
DIANO-CREAM
3 faces



DIANO-GERY
3 faces



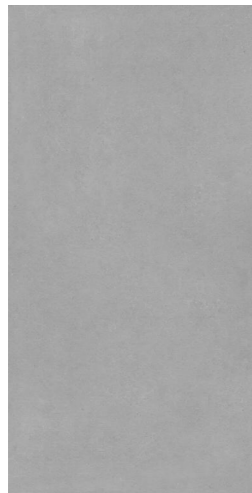
JSW12601LG
1 face



JSW12601DG
1 face



UOF8664
8 faces



BL126002
random face



BL126003
random face



BL126005
random face



BL126006
random face



BL126007
random face



WME1270
-BLANCO
4 faces



WME1270
-GERY
4 faces



WME1270
-COFFEE
4 faces

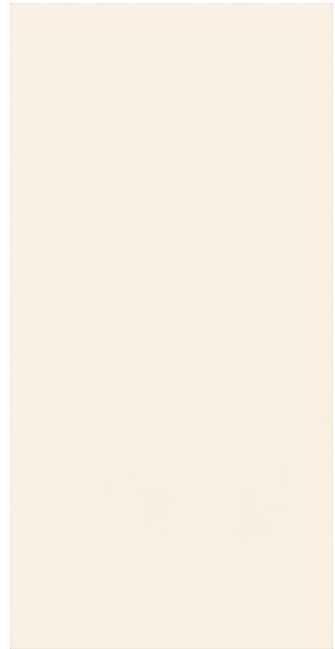


WME1270
-ANTRACITE
4 faces



WME1270
-NEGRO
4 faces

仿古
Matte



YUANS-BLANCO
3 faces



YUANS-COFFEE
3 faces



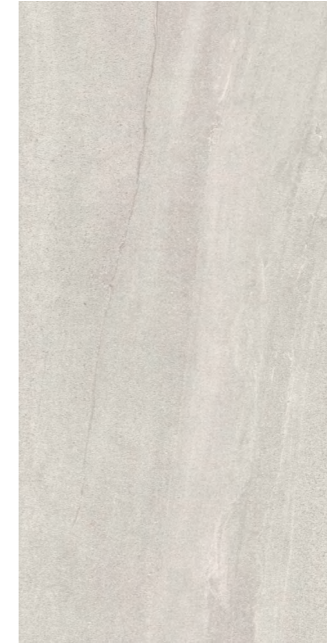
YUANS-GERY
3 faces



YUANS-NEGRO
3 faces



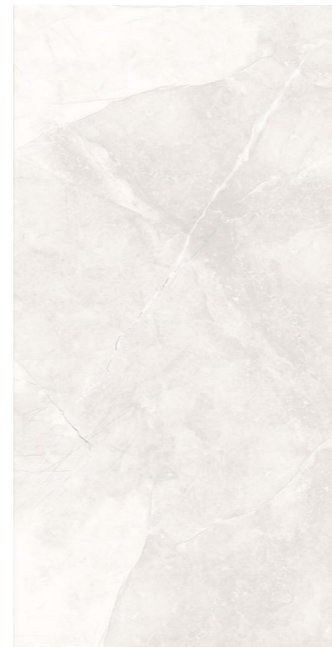
SW-612081
7 faces



YP126150
2 faces



CW126001
7 faces



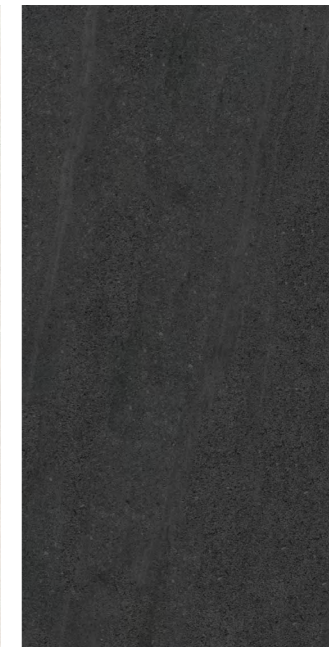
A126115
4 faces



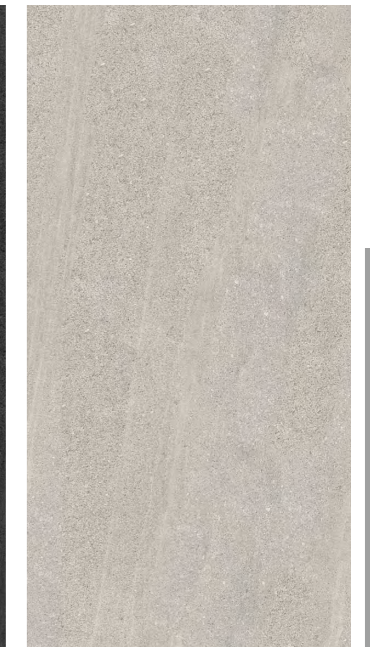
GRU126001
4 faces



GRU126002
4 faces



GRU126003
3 faces



GRU126004
3 faces

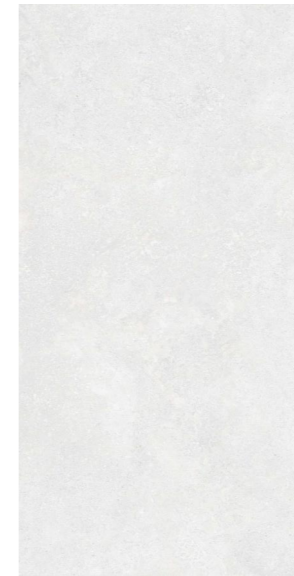
仿古 Matte



LIMESTONE-BEIGE
random face



LIMESTONE-MIBAI
random face



LIMESTONE-LIGHTGERY
random face



LIMESTONE-GERY
random face



LIMESTONE-DARKGERY
random face



仿古 Matte



MW6001
1 face



MW6003
1 face



MW6004
2 faces



MW6008
3 faces



MW6014
4 faces



MW6015
1 face



MW6016
1 face



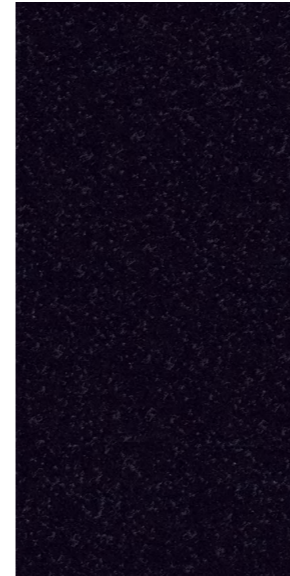
MW6019
4 faces



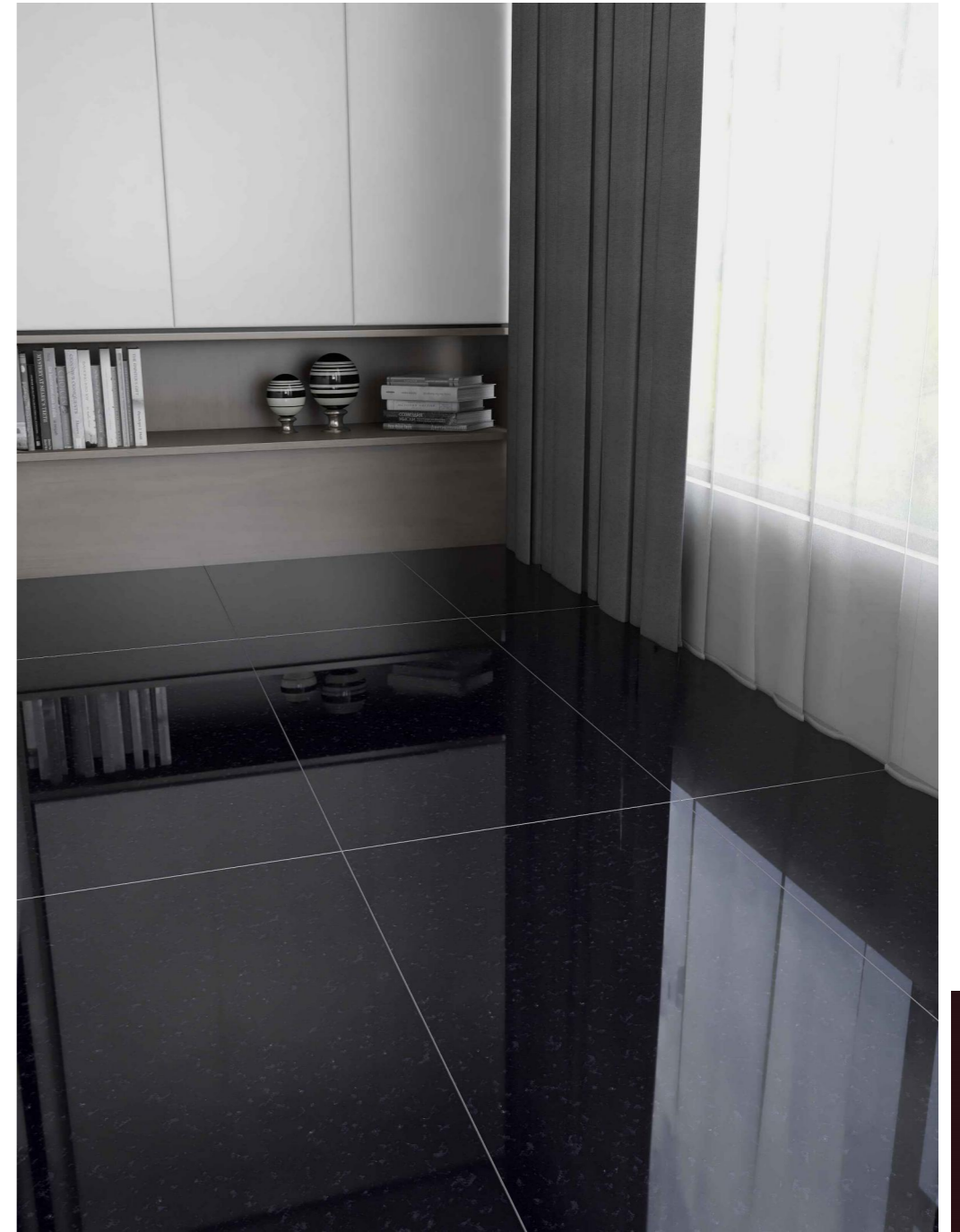
MW60112
2 faces

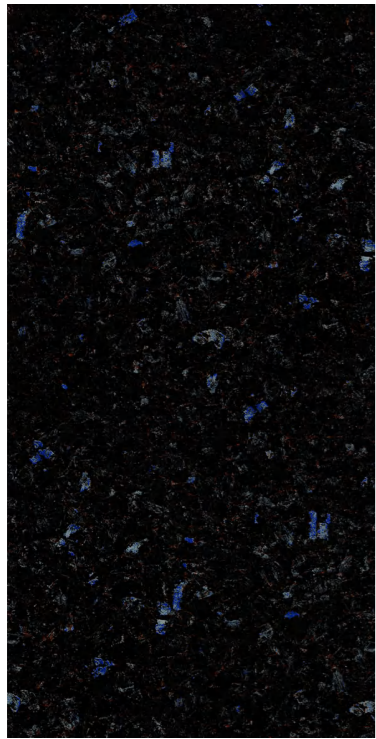


木纹
Wooden

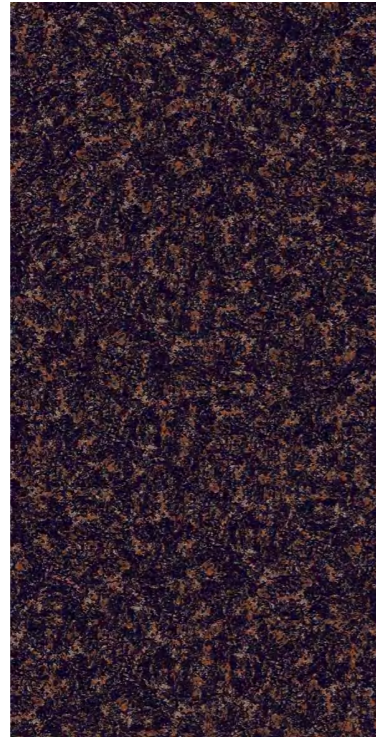


ANGOLA BLACK 61203
random face





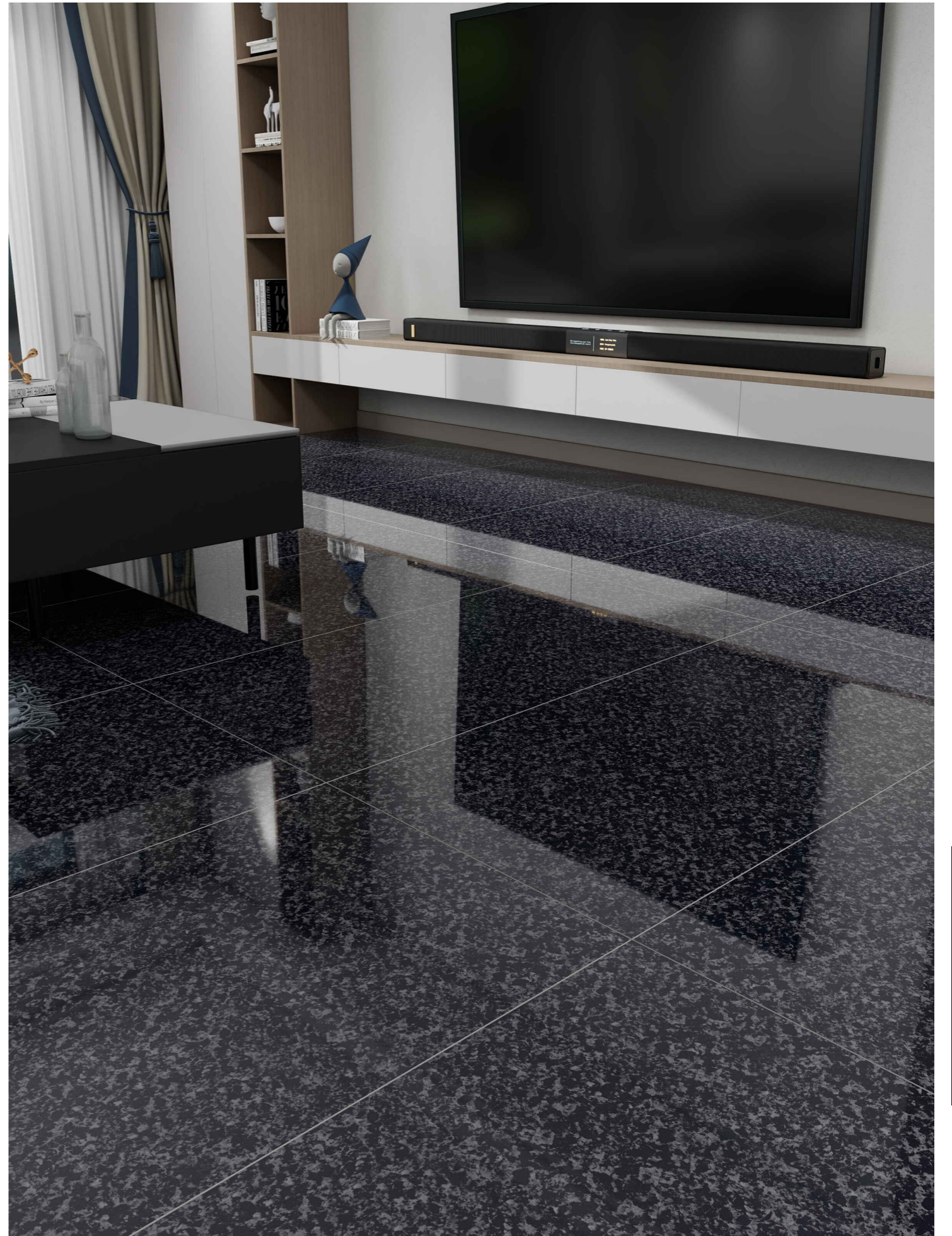
ANGOLA BLACK 61201
random face



ANGOLA BLACK 61202
random face



ANGOLA BLACK 61204
random face





DL126006
7 faces



DL126030
6 faces



DL126060
4 faces



DL126064
4 faces



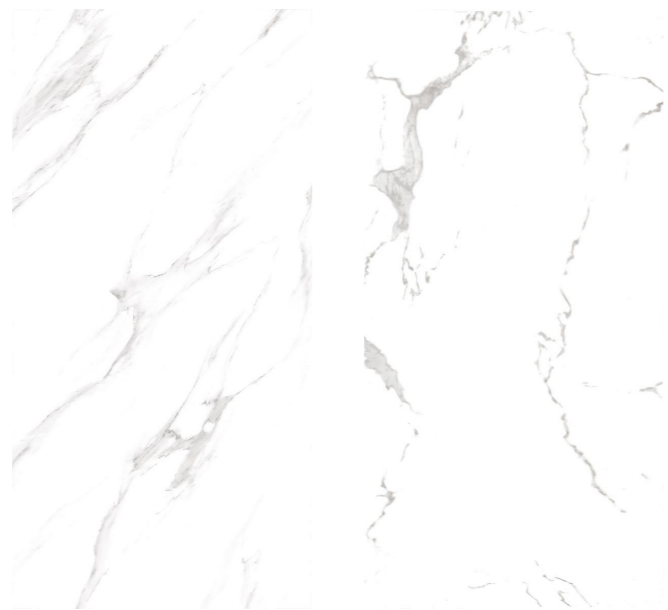
DL126092
8 faces



DL126129
6 faces



23NLM1216
4 faces



AURORA GLOSSY
7 faces



JY CARARA M
6 faces

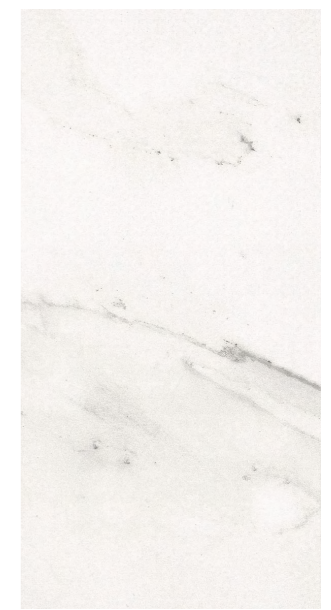
PA126620P
5 faces



KOD-UOE1481
6 faces



KOD-VE126-07
5 faces



TT CARARA ORO
9 faces



PN75159
4 faces



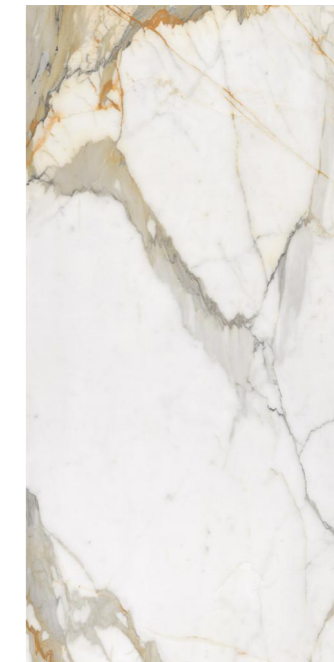
PN75160
6 faces



PN75162
3 faces



PN75163
3 faces



PN75164
8 faces

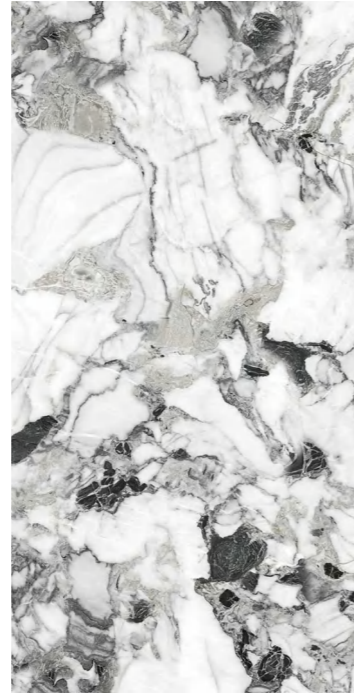
卡拉拉 Calacatta



YC612009
6 faces



YC612010
6 faces



YC612014
3 faces



YC612018
4 faces



YC612023
6 faces



YC612026
6 faces



YC612035
3 faces



YC612037
2 faces



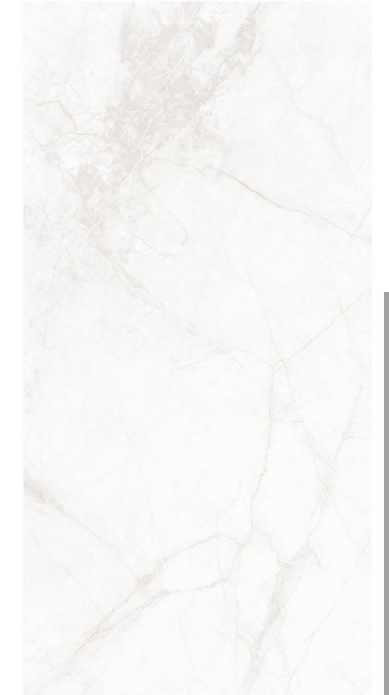
YC612046
4 faces



YC612061
5 faces



YC612063
5 faces



YC612064
7 faces



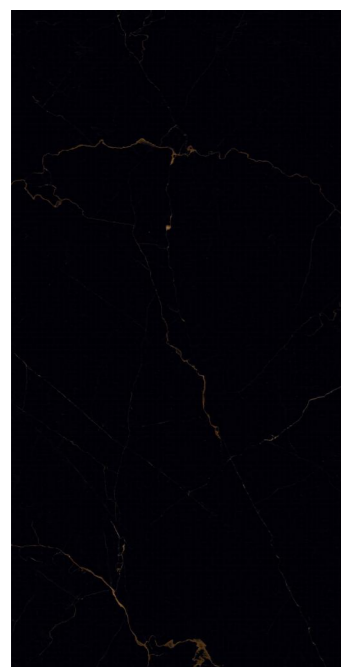
PN75151
4 faces



PN75152
6 faces



PN75167
6 faces



YC612005
6 faces



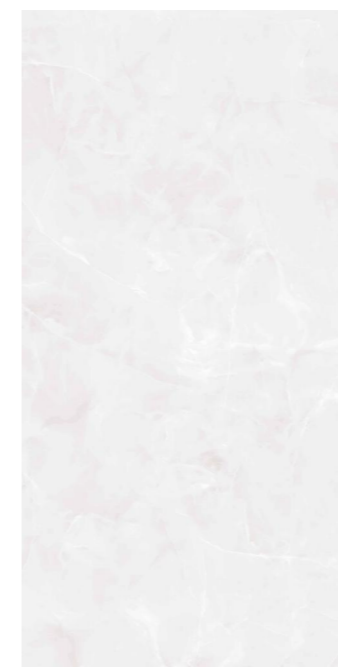
YC612011
3 faces



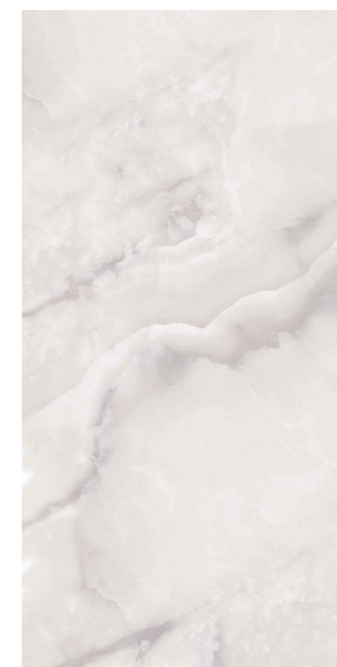
YC612035
3 faces



YC612037
2 faces



YC612073
1 face



YC612078
1 face



YC612079
5 faces

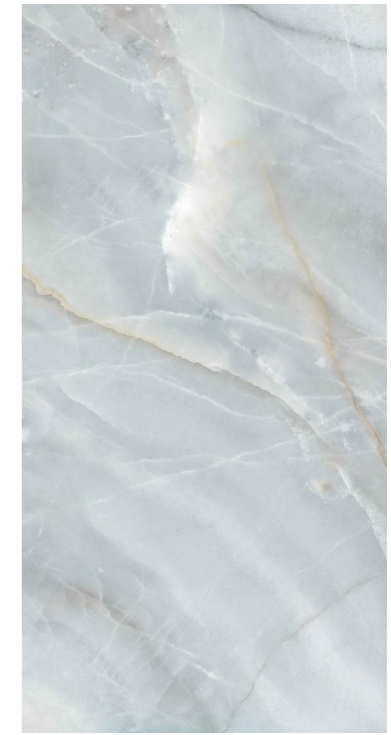
亮面 Glossy



JT126185
2 faces



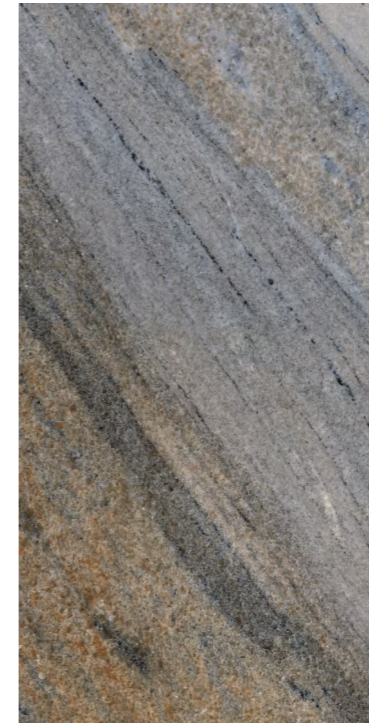
JT126198
4 faces



JT126201
4 faces



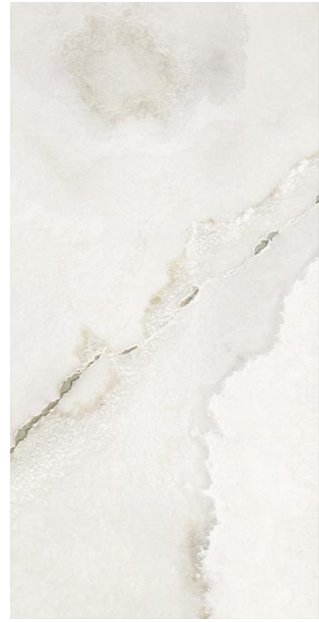
CH12640YP
4 faces



TRB61042
1 face



BM134001
4 faces



BM134002
6 faces



BM134003
6 faces



BM134004
6 faces



BM134005
4 faces



BM134006
4 faces



亮面 Glossy



BM134007



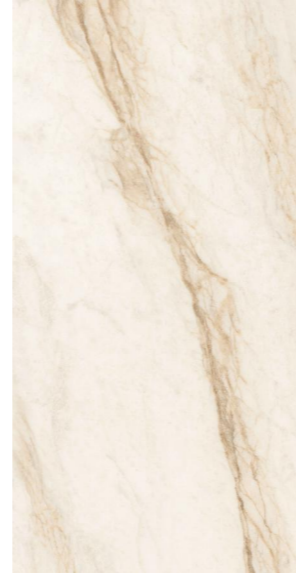
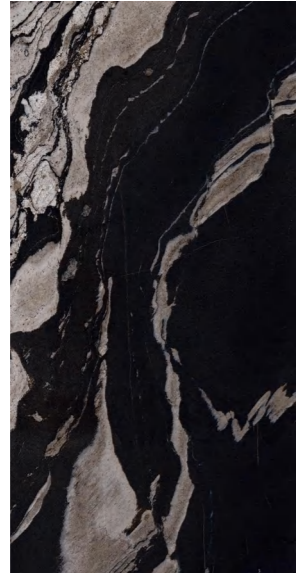
BM134008



BM134009



BM134010

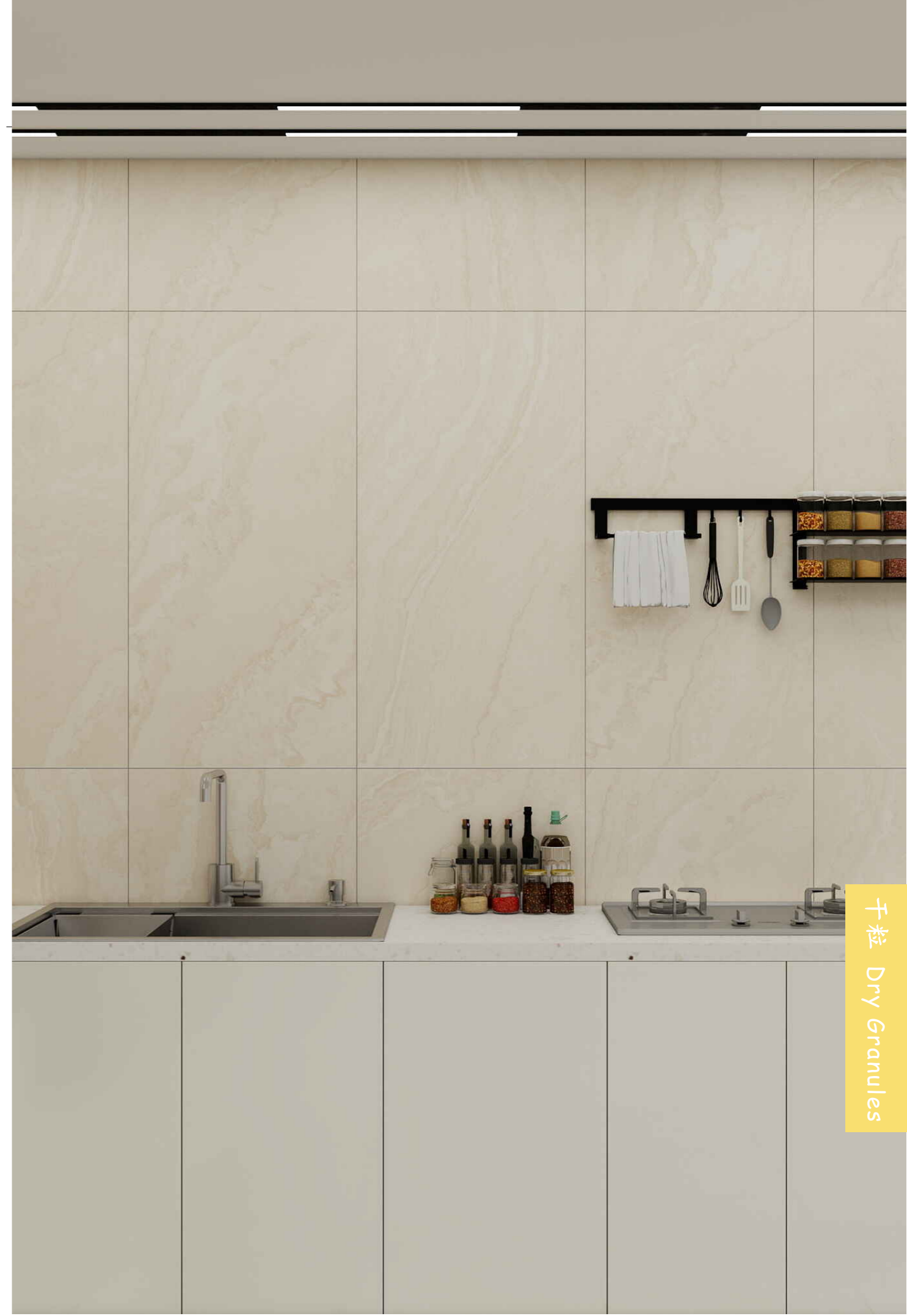


YC612031GL
6 faces

YC61232GL
5 faces

YC612033GL
6 faces

YC612034GL
6 faces



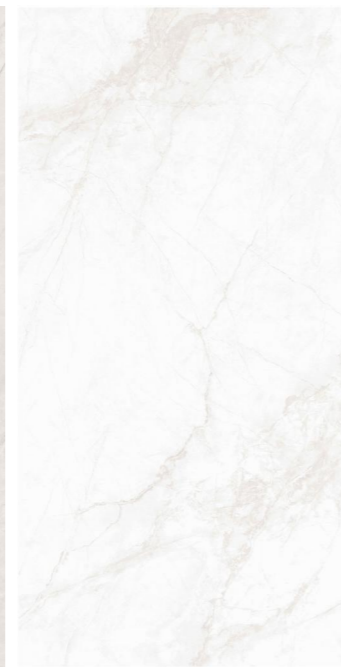
千粒 Dry Granules



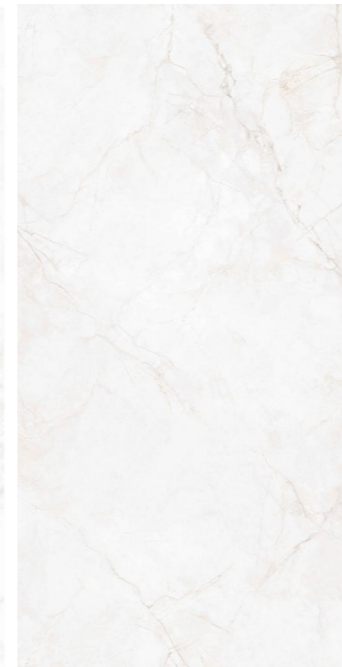
YC612048XL
3 faces



YC612057XL
8 faces



YC612064XL
7 faces



YC612065XL
4 faces



YC612067SF
5 faces



YC612068SF
6 faces



YC612069SF
6 faces



YC612070SF
6 faces



Instagram



TikTok

ZIBO ALL-KING IMPORT&EXPORT TRADING CO.,LTD

淄博奥经进出口贸易有限公司

山东省淄博市张店区中国财富陶瓷城6期8栋6号

No.6, 8th building, 6th district, China Fortune Ceramic City, Zibo, Shandong Province, China

(0086) 19811739180

www.all-king.com

tyceramic2@all-king.com