



Since 2006

<https://jyf-metal.com>

Contact: Lucky Zou

Contact information : 133 8020 9777 (Wechat)

Email: zoulucky@fsjinyifan.com

Factory (Office) address: No. 3, block 4, Liyuan Logistics City, No. 38, Gongye Third Road, Tanzhou Industrial Zone, Chencun Town, Shunde District, Foshan City, Guangdong Province

联系人: 邹小姐

联系方式: 133 8020 9777 (同微信)

邮箱: zoulucky@fsjinyifan.com

工厂(办公)地址: 广东省佛山市顺德区陈村镇潭洲工业区工业三路38号力源物流城B区4座3号

ENGINEERING PROJECTS

工程项目

**Foshan Jinyifan Metal Products Co.,
Ltd.**

佛山市金一机金属制品有限公司

COMPANIES INTRODUCE/公司介绍

JYF Metal 成立于2008年,专注于金属材料及产品研发,设计,制造,安装于一体的生产服务型企业。我们为建筑承包商,设计机构,电梯制造商,钣金加工商等提供众多建筑金属整体解决方案。

工厂占地3000平方米,工人80人,设计和工程技术人员15人,国际部销售15人,拥有全球最先进的德国TROMPF通快激光切割设备,数控折弯机,V槽创槽设备,滚圆设备,真空PVD镀膜设备,雕刻机,蚀刻设备等,拥有丰富经验的生产能力和设计团队,结合金属特性,工艺性能设计,切割,焊接,打磨,雕刻,抛光,成型等制作成各种金属制品和装饰工程产品。项目装饰产品为,金属屏风,彩色装饰板,金属装饰线条,金属景观雕塑和金属幕墙以及工程定制产品等。

JYF Metal 客户已经遍布全部30多个国家,服务于世界著名酒店,希尔顿,喜来登,威斯丁等,商业场所,市政工程等建筑工程项目。在高端酒店建筑和设计领域具有领先的影响力,成为国内外建筑工程首选服务商。金一帆金属拥有专业工程师和设计师团队,为您提供方案优化、深化设计、安装及金属高端产品的整体解决方案(让)产品与设计完美结合,同时为您节省成本,体现惊人的设计和金属的艺术(感)。

作为金属行业的翘楚(领头羊),真诚的合作态度和严格的质量控制(把控),金一帆已与国内许多的承包商,设计师、建筑师以及装饰公司建立了很好的长期合作关系,信誉和优质的产品和服务一直是并将永远是我们追求的目标。

Founded in 2008, JYF Metal, a leading production service enterprise, is specialized in metal materials, product R & D, design, manufacturing, and installation. We provide a wide range of construction metal solutions for contractors, design companies, elevator manufacturers, sheet metal processors, etc.

The factory covers an area of 3000 square meters with 80 workers, 15 designers, engineers, and 15 international sales. We have much-advanced equipment such as TROMPF laser cutting equipment from Germany, CNC bending machine, roller equipment, vacuum PVD coating equipment, engraving machine, etching equipment, and so on. With rich experience in production capacity and design team, we devote to supplying various metal products and decoration engineering products through the following processes: cutting, welding, polishing, carving, polishing, molding, and so on. Our main products include but are not limited to stainless steel screens, stainless steel decorative sheets, stainless steel profiles, stainless steel landscape sculptures, metal curtain walls, and customized metal products.

JYF Metal occupies in providing product experience service, a complete service system, and the best one-stop solutions. Many customers well receive JYF Metal, like Hilton, Sheraton, Westin and Vanke, Poly Real Estate, and Four Seasons Hotels in China, as well as other Commercial places, villas, and municipal engineering projects. With a leading influence in the high-end stainless steel decorative plate and customized products market, JYF Metal has become the preferred service provider of decoration engineering customization at home and abroad. We have professional engineers and design teams who are excellent at providing customers with the best quality and meeting their personalized requirements. Professional design and production suggestions given by our engineers according to customer's needs is to ensure their perfect combination with products at less cost, which reflects a feeling of fantastic metal art.

As a leading company in the stainless steel industry, JYF Metal establishes an excellent long-term cooperative relationship with many well-known enterprises at home and abroad through a sincere attitude and strict quality control. Perfect products, excellent service, and a good reputation will always be the goals that we have been pursuing.



MILESTONE/里程碑

2004

In 2004, Foshan Jinfeifan Stainless Steel Co., Ltd. was founded.

the establishment of stainless steel color sheet factory

the establishment of the overseas sales team

2004年，创立佛山市金非凡不锈钢有限公司

成立金属彩色装饰板加工厂 成立海外销售团队

2013

In 2013, Foshan Jinyifan Stainless Steel Co., Ltd. was founded.

Metal Engineering Decoration Co., Ltd.

Metal products processing factory

2013年，创立佛山市金一帆不锈钢有限公司

金属工程装饰有限公司 金属制品加工厂

2015

In 2015, Hong Kong Jinyifan Metal Products Co., Ltd. was founded.

2015年，香港金一帆

金属制品香港分公司



WHY CHOOSE US ?/为什么选择我们?

JYF Metal has rich experience working with contractors, designers, and architects at home and abroad to reduce costs, communicate efficiently, and provide thoughtful customer service.

JYF Metal 与国内外建筑承包商、设计师、建筑师合作，和行业经验，为您降低成本和高效沟通，体贴的客户服务。

Besides standard metal products, JYF Metal can meet your specific requirements to make custom-made products beyond customer expectations. All of these will create significant value for our customers.

除了常规的金属产品，JYF Metal 可以满足您的特殊要求，做定制产品，常常会超出了客户的期望。所有这些都会给您带来意想不到的增值服务和行业影响力。

Over ten years of product quality guarantee, provide timely and effective after-sales service.

JYF Metal的产品保质10年以上，并提供及时有效的售后服务。

Professional engineering and sales team online.

JYF Metal有专业的工程师和销售团队在线。

**Solution/
解决方案**

**Rich Experience/
丰富的经验**

**Technical Support/
技术支持**

**Customized Services/
定制服务**

**Advanced Equipment/
先进设备**

**Quality Assurance/
质量保证**

**Free Samples/
免费样品**

**24/7 Hours Online/
24/7小时在线服务**

JYF Metal provides a one-stop stainless steel project solution, as well as project design, advanced drawings, and installation instructions.

JYF Metal 为您提供一站式解决方案，除了提供材料和产品外，还可以协助您进行项目设计、深化图纸和安装指导等。

JYF Metal has a solid technical team to provide you with suitable materials, surface treatment, design, and installation guidance. The JYF team will be at your service.

JYF Metal 拥有一支强大的技术团队，为您的工程提供合适的材料、表面处理、设计、安装指导等，JYF团队将随时为您提供服务。

3 sets of PVD vacuum equipment, two sets of German laser equipment, bending, grooving machine, etc.

PVD真空彩色电镀设备3台，德国激光设备2台、折弯、刨槽等一站式生产线。

Free samples for metal color sheets and stainless steel decorative profiles to help you identify colors and models when making a bulk order.

JYF Metal提供免费的金属彩色板和不锈钢装饰线条样品，以帮助您在进行批量采购的时候确认颜色和型号。

CERTIFICATE/证书



The interesting part of the project is the placement of an art sculpture on the box building square, known in the industry as "Big head". The lower part of the box building is the conference center, while the "big head" sculpture above is a free exhibition space. Two completely different architectural models formed a very exaggerated contrast.

该项目非常有趣的地方是盒子建筑方体上放置了一个艺术雕塑，被业界称为“大头”。下面的盒子建筑部分为会议中心，上方的“大头”雕塑为自由展示空间。两个完全迥异的建筑造型，形成了非常夸张的对比。

PRODUCT CATALOG/产品目录



Stainless steel color sheet P5-7

彩色板 P5-7

Stainless steel water ripple sheet P8-10

水波纹板 P8-10

Stainless steel tile trim P11-14

装饰线条 P11-14

Stainless steel screen partition P15-20

屏风 P15-20

Furniture P21-30

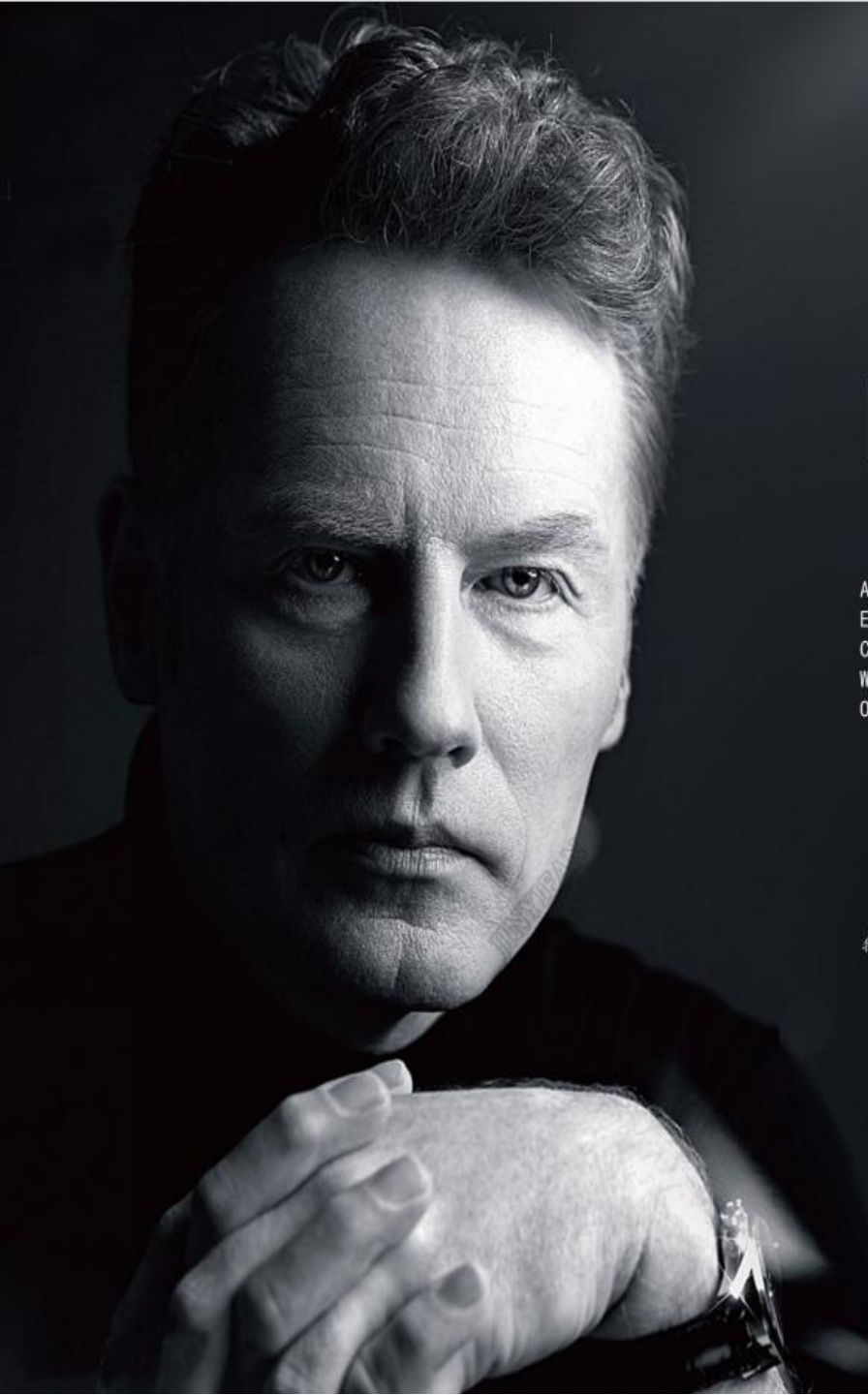
家具 P21-30

Sculpture P31-39

雕塑 P31-39

Aluminium honeycomb P40-41

铝蜂窝 P40-41

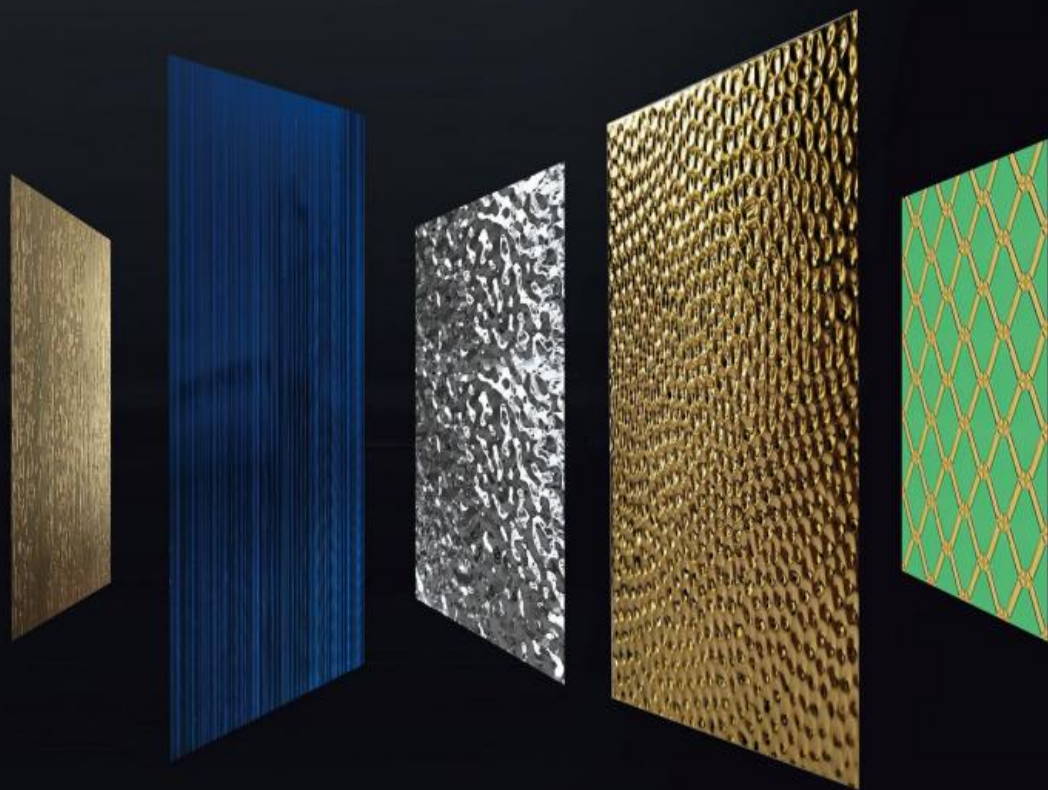


LIVE METAL

ORIGINALITY AND UNIQUENESS
ARE THE PURSUIT OF EVERY DESIGN-
ER. EVERY PRODUCT, FROM CRAFT TO
COLOR, FROM PATTERN TO MODELING,
WE HAVE BEEN LEADING EVERY TREND
OF THE INDUSTRY.

原创

独特是每一个设计师创作的追求
我们的每一个产品
从工艺到色彩从图案到造型，
我们一直在引领着行业的每一次潮流





In the light of all gold design, we use a large area of metal material when selecting main materials. The main material tone of silver and gold is used together, and a large number of metal materials are used in partitions, furniture, ceiling and other places, to strengthen the simple sense of future and technology of the car theme. 全金色的车身设计, 因此在主材料选择上, 我们大面积运用了金属材质。以金属银和金黄两种色彩的主要材质基调配合使用, 并在隔断、家具、天花等多处都运用了大量金属材料, 强化简约的未来感和科技感的汽车主题。

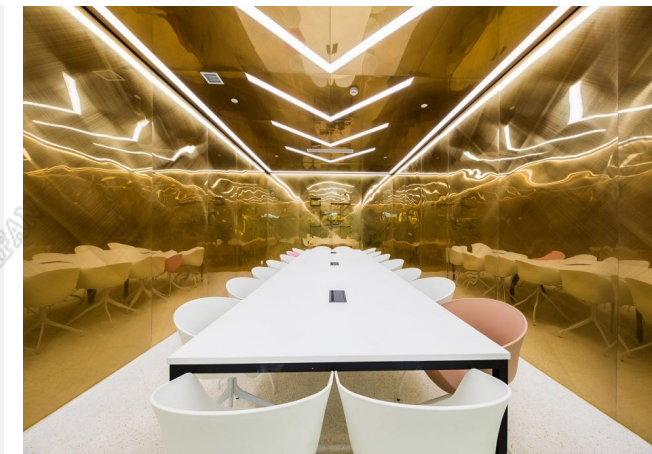


The 4 meters long irregular curved gold bar is inspired by the concept of streamlined gold body of BMW X2, which is smooth and full of changes. GOLD METAL plate IS IN WINE LIGHT, which sets off below dim lamplight with SPARKLING, like telling the passion and romance of the time. Concrete wall and golden texture form a strong contrast, which is new and old collision, rough and delicate collision and collision of speed and passion

4米长不规则的曲面金色吧台, 设计灵感源于BMW X2的流线型的金色车身概念, 流畅而富有变化。金色的金属板在酒光之中, 在昏黄的灯光映衬下, 闪闪发光, 像是诉说时光里的那些激情浪漫。混凝土的墙面与金黄色的质感形成强烈的对比, 新与旧的碰撞、粗狂与细腻的碰撞、速度与激情的碰撞



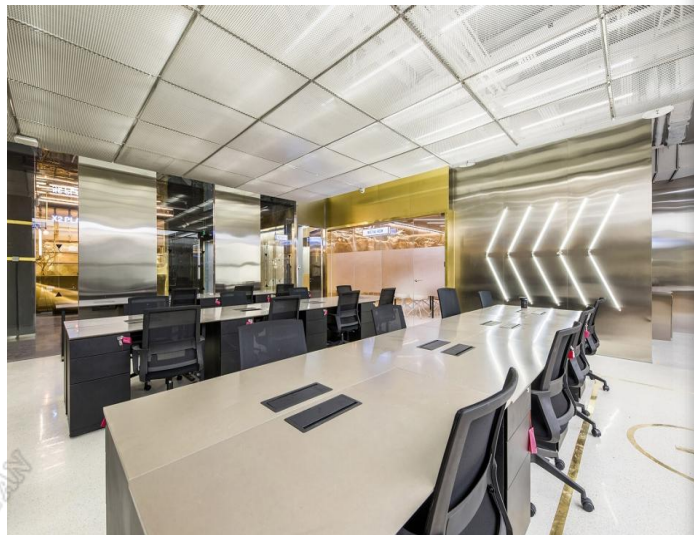
The meeting room is another all-gold space in the whole space. The metal plates constantly reflect each other. Under the background of the light on the ceiling, there is a sense of infinite extension of the space. As if sitting in a BMW X2, it keeps moving in the direction indicated by the arrows. 会议室是整个空间的另一个全金色的空间, 金属板之间相互不停地反射, 在天花上灯光的映衬下, 有一种无限延伸的空间感受。仿佛坐在BMW X2里, 顺着箭头指示的方向不断前行。



On one side of the bar is a box wrapped in gold. The bright golden curtain extends throughout the space and glows with golden light. The softness of this golden curtain and the reflection of the mirror inspire people's touch and sense. When the curtains are drawn, people can hold private events and performances; when opening curtain, it can be used as a yoga aerobics sports fitness place. Through the translucent metal curtain, it can be merged with the outside space, or it can be separated and become independent of each other.

酒吧的一侧是一个被金色包裹着的盒子, 金色明亮的幕帘延伸到整个空间, 闪烁着金色的光芒, 这个金色幕帘的柔和与镜子的反射激发了人们的触觉和感官。幕帘拉上时, 人们可以举办私密性的活动表演; 打开幕帘, 可以作为瑜伽健美操的运动健身场所。通过幕帘这种半透明的金属, 可以和外面的空间合并在一起, 也可以分开, 成为彼此独立的空间。

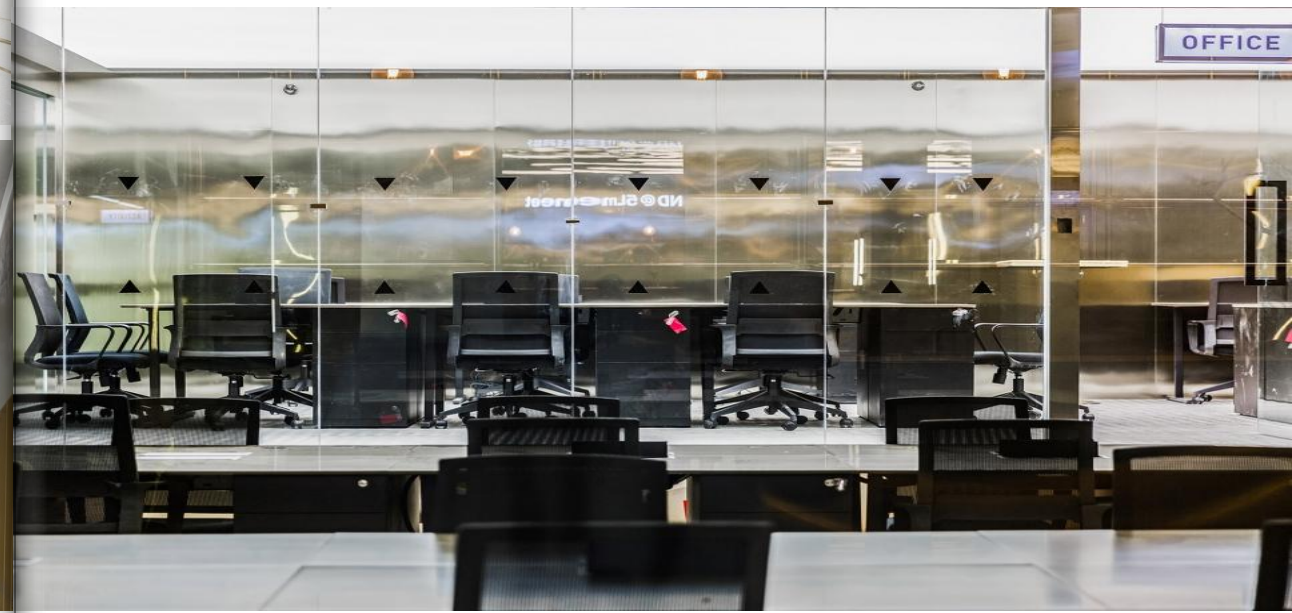
The open office area uses silver metal plates as the main material of the space, which represents a vivid gray color. The silver metal plate can vaguely reflect the surrounding environment, with the change of light, people, line of sight, so that the surface of the metal plate will appear different colors. One can feel these color changes when getting through the space, but overall it takes on a cool gray tone. Gray can be any color, it is actually a complex color, the more complex the more vivid. In the office area, gray is no longer a simple white and black, but a colorful confluence. 开放办公区以银色金属板作为空间的主材料，演绎了生动的灰色。银色金属板可以朦胧地反射周边的环境，随着光线、人流、视线的变化，金属板表面会呈现不同的色彩。人在空间中移动，可以感受到这些颜色变化，但总体上它又呈现出一种冷灰的基调。灰色可以是任何颜色，它其实是复杂的颜色，越复杂越生动。在办公区域中，灰色不再是简单的白加黑，而是五颜六色的汇合。



Deep inside the space, a large area of silver and gold does not bring the slightest sense of distance, mild and soft brown sofa and peacock green carpet to inject warmth into the pure space. Looking into the material, the light stainless steel material and plain concrete wall staggered. Coarse and fine terrazzo ground and natural pebbles bring a harmonious “temperature” in the space. 深入空间内部，大面积的银与金没有带来丝毫的距离感，温和柔软的棕色沙发和孔雀绿的地毯，为纯粹的空间内注入暖意。细究材质，在光感的不锈钢材质与质朴的混凝土墙面交错中，粗中有细致的水磨石地面以及天然的鹅卵石，带来空间中和谐的一抹“温度”。

Taking the golden shell element of BMW X2 as the main line, and creating a sense of spatial contrast in the spirit of going in the opposite direction, through a golden hidden staircase, people are brought into the golden fashion road show space and the office area with the auto repair shop as the theme scene.

以BMW X2金色外壳元素为主线，以反其道而行的精神营造空间对比感，通过一条金色的隐秘楼梯，把人们带入金色时尚的路演空间和以汽修厂为主题场景的办公区域。



SCULPTING EVERY DETAIL
WITH A CRAFTSMAN'S MIND
以工匠之心精雕每一个细节

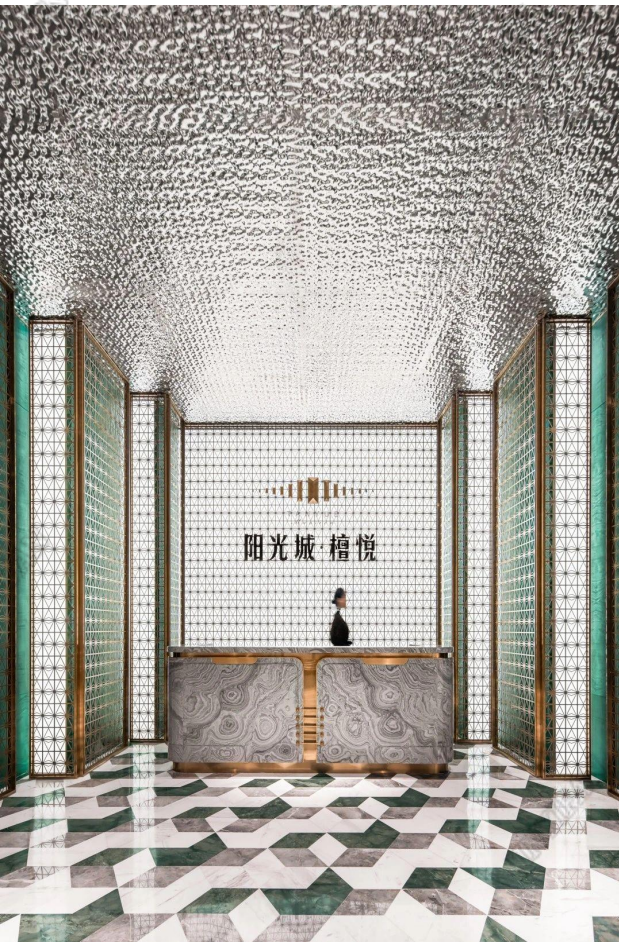
—
STOP AT PERFECTION AND STRIVE FOR PERFECTION

Derived from the most advanced concepts of architectural science, the ingenious combination with traditional human settlements, and to confirm the realm of living.

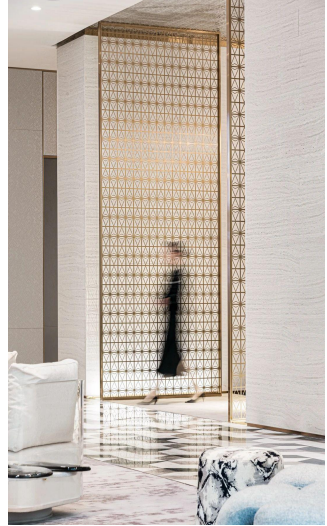
止于至善 力求完美

源自建筑科学最先进的理念，巧妙结合传统人居哲学，
以印证居住的天人境界。

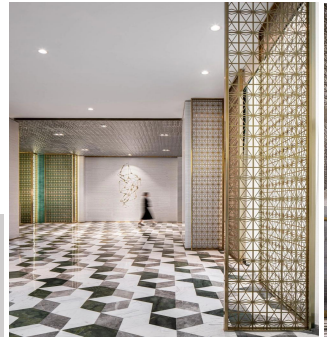




Entering the reception area of the sales office, the top uses the stainless steel corrugated plate which is popular among designers nowadays, and the reception desk uses the combination of metal and marble. The overall effect is very metal. 走进售楼处的接待区，顶部使用了现今颇受设计师喜爱的不锈钢水波纹板，接待台则运用了金属+大理石的组合搭配，整体的效果就很金属范。



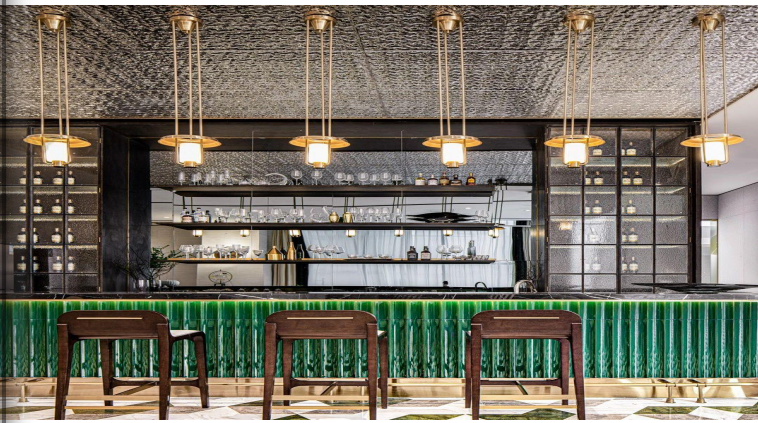
Designers enhance the artistic tonality of the space in the space through the metal mirror reflection and the expression of light and shadow, which symbolizes the characteristics of the jewelry solid, shining and lasting. 设计师在空间里通过金属镜面反射以及光影的表达来增强空间的艺术调性，象征珠宝坚固、闪耀、恒久远的特性。



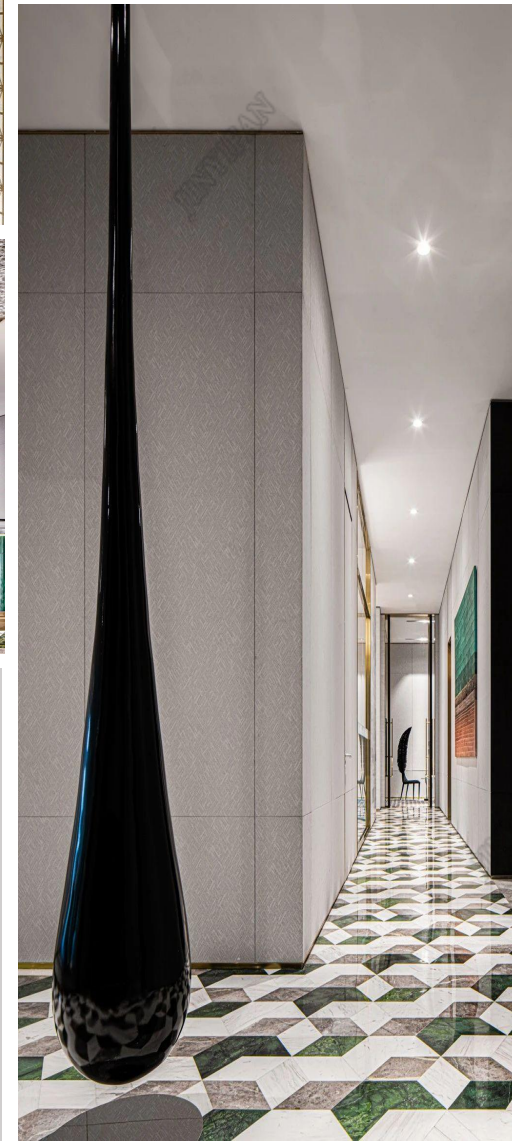
In the elevator hall, crystal works of art, together with the metal elevator car and gold hollow partition, form the effect of pearlescent. 在电梯间处，水晶的艺术品，加上金属的电梯厢和金色的镂空隔断，形成了珠光闪耀的效果

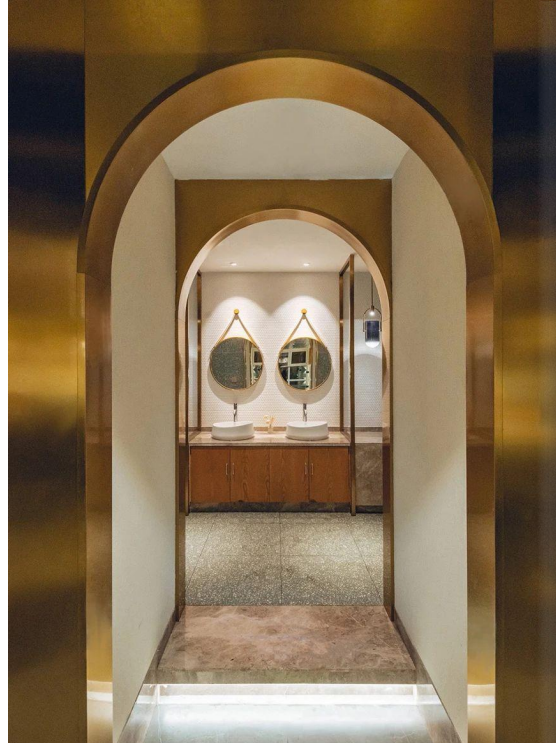
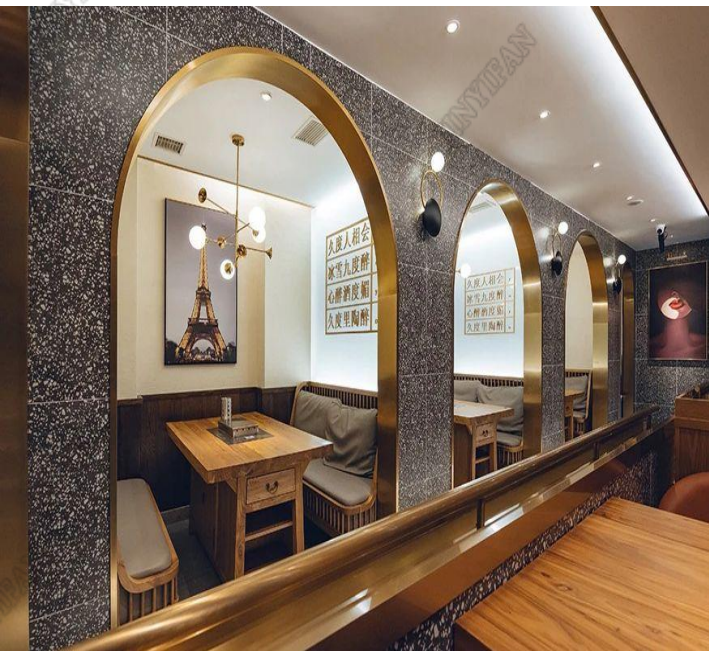


Look, in the public area, there is an electroplated metal water drop art installation, which fits the theme of "water". 瞧，在公共区域中，有一个电镀的金属水滴艺术装置，正正切合了“水”的主题。



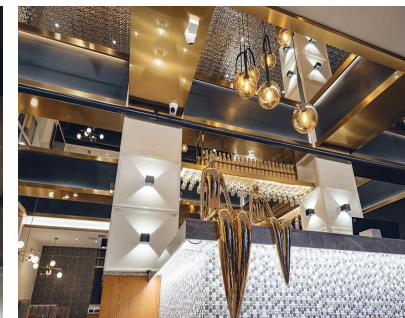
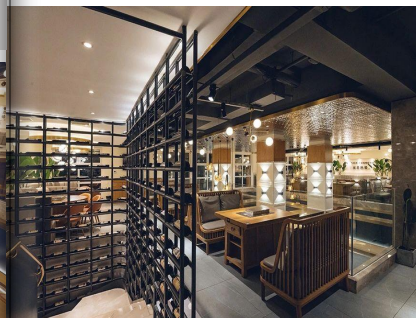
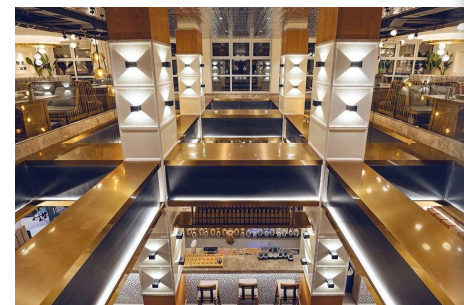
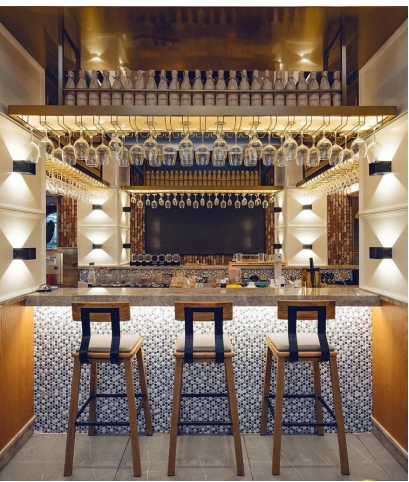
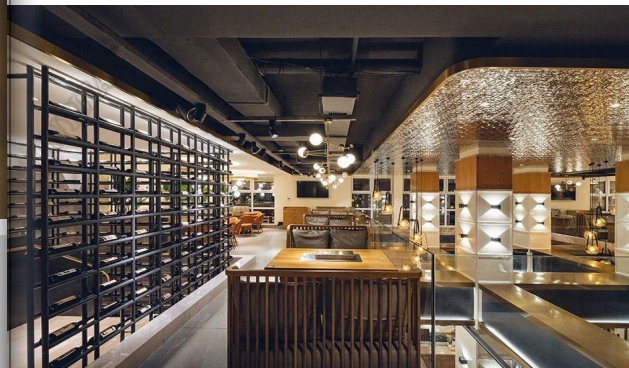
The background enhances the level of space through the artistic presentation and the sense of sequence of stone. The transparent metal screen, as the main hall partition, separates the hall and the reception area well. The two seem to be integrated but do not interfere with each other. Through the light refraction, it seems to be playing a game of light and shadow, which is clean and interesting. 背景通过艺术品呈现与石材的序列感增强空间的层次，通透的金属屏风作为大堂隔断，很好的隔开了大厅与接待区，两者看似一体却又互不干扰，透过灯光折射，仿佛在玩一场光影游戏，干净剔透又饶富趣味性。





A large area of stainless steel water ripple ceiling reflects the flowing and colorful light, meeting the visual impact of people, as if in the underwater world.
室内大面积的不锈钢水波纹吊顶，反射出流光溢彩的光线，满足人的视觉冲击，仿佛置身海底世界。

The orange light in Jiudu reflects the metallic luster. Through the tall floor to ceiling windows, people with stories will be drawn in to narrate their own stories or to be a qualified listener.
久度里橘黄色的灯光反射金属光泽，透过高大的落地窗释放热情，将有故事的人吸引进来，尽情叙事自己的故事或是做一个合格的聆听者。



This city gathering place full of stories, called Jiuduli bar, commonly known as "Hermes of barbecue", combines the best food of the night - barbecue, wine.

这间装满故事的城市聚集地，名叫久度里的酒吧，俗称“烧烤界的爱马仕”，将夜晚最美好的食物结合——烧烤，酒。

Metal always gives people a sense of luxury, but in this bar, you can feel a warm feeling. It is the impact of luxury and warmth that shows the unique charm of this bar. The integration of water and fire, after all, can not tell a winner or loser.
金属总是带给人一种奢侈华丽感，但在这间酒吧里你却能体会到一种温暖的感觉，正是这种奢华与温暖的撞击，将这间酒吧的独特韵味展示出来。水与火的相融，终究分不出一个胜负。



Metal, hard and cold. But, holding in our hands ,it is going to breathe: its color could speak, its lines could inspire you, its shape could think and it has vigor.

金属，生硬而冰冷。但是，在我们手中，金属是一种文化它的色彩会变成语言，它的线条能触发你的灵感，它的造型有了思想，活力在她的身上绽放！



WELLSKY STORE PROJECT CASE
WELLSKY
商店项目工程案例

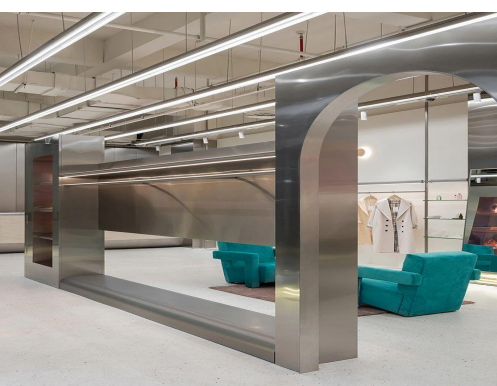
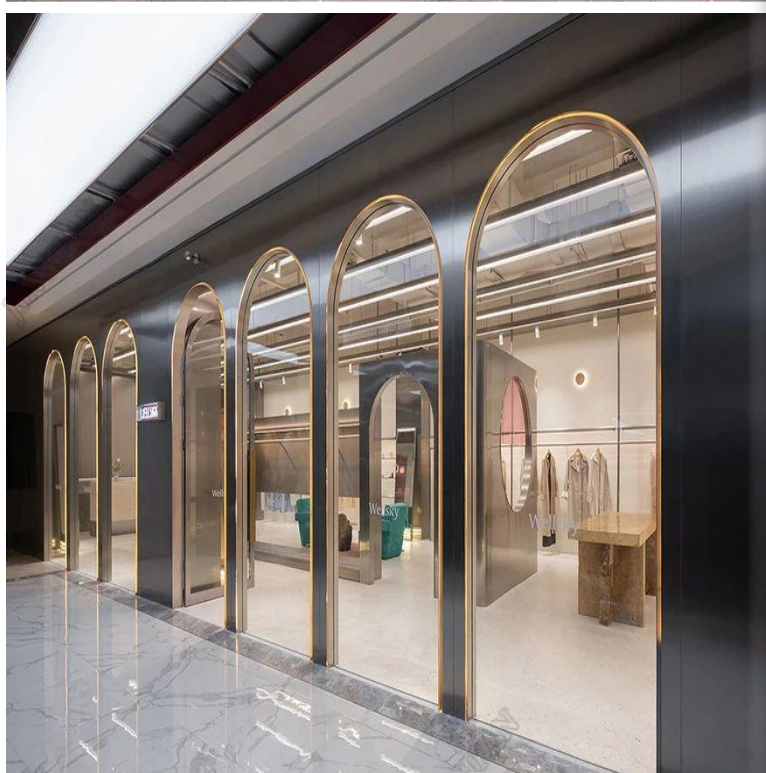
The exterior facade of wellsky store is not a kind of provocation by talking with customers through the curved door and looking into the interior through the outside. The door frame intersects with the yellow light, and the warm smell lures customers into the store.

WELLSKY商店外部门面由弧形门与来往的顾客交谈，透过室外望向室内，无疑不是一种挑逗。门框与黄色灯光相交，温馨的气息引诱顾客进入商店。



Entering the space, the interior of the store is matched with silver and white to add warm and bright spots to the space, and a large number of stainless steel are used to strengthen the theme. The shape of the interior partition wall just corresponds to the shape of the facade, creating an extra layer of fun.

进入空间，商店内部以银色和白色作为搭配，为空间增添温馨亮点，并采用大量的不锈钢来强化主题。内部的隔墙形状恰好与门面形状相呼应，创造了一层额外的乐趣。

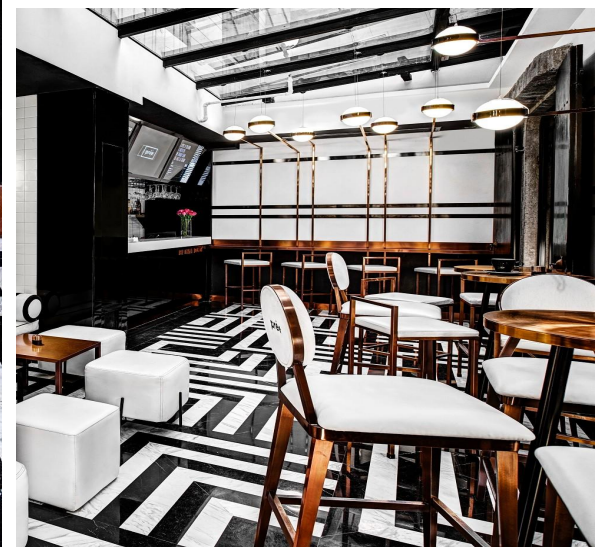


The stainless steel wall and the marble table get along well in the same space. The clothes hanger is made of metal tube, and the light warm yellow light is embedded in the orderly line sense, and vertically irradiates the clothes, which highlights the product and adds softness to the visual experience, so that customers can feel the comfort brought by simplicity when trying on clothes.

不锈钢墙面与大理石长桌在同一空间相处融洽，衣架采用金属管制成，在排列有序的线条感上嵌入浅浅的暖黄色灯光，垂直照射在衣服上，将产品突出的同时又在视觉体验上增添了柔和感，让顾客在试穿衣服时感受简单主义带来的舒适感。

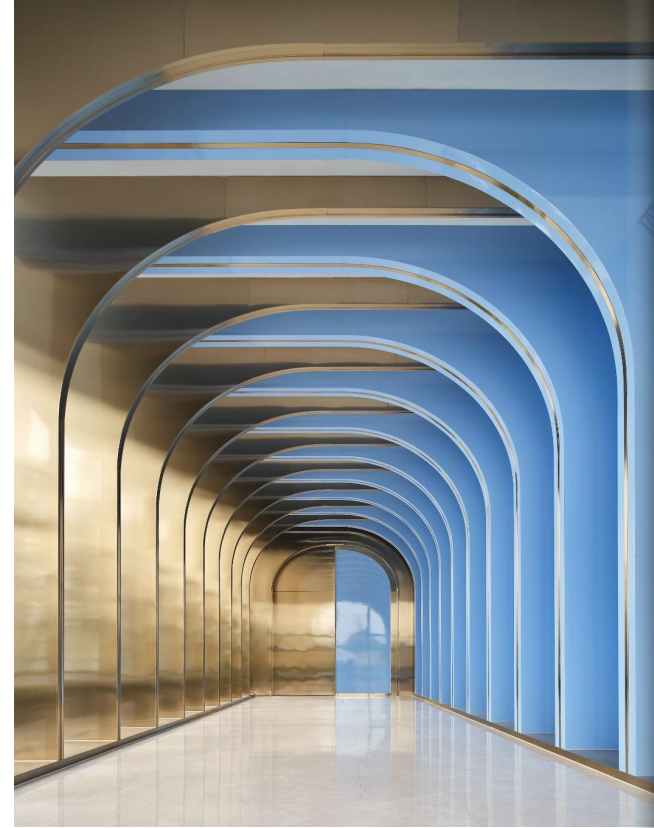
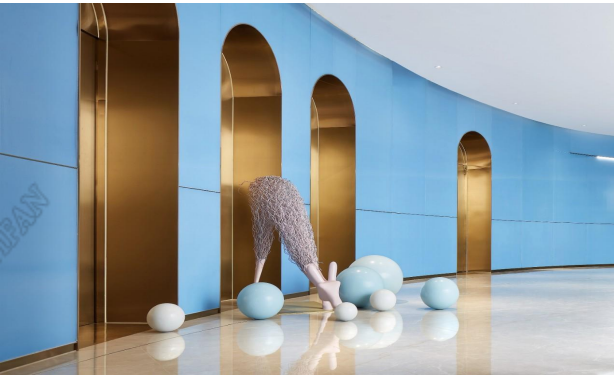


As the store is located in Xintiandi, space is limited, so Baptiste had to make it a fun space to look at and remember. Therefore, the concept of the jewelry box was born in Baptiste's mind. He used some very modern geometric elements and advanced textures: the floor is patterned with black and white marble stripes, and the walls are patterned in corresponding black and white tones with lines of rose gold stainless steel. A white couch is a classic French style, with geometric lines and modern interpretation. 因为店面位于新天地，空间有限，所以必须要把它打造成一个让人一眼看去过目不忘的有趣空间，于是珠宝盒的概念在Baptiste的脑海中应运而生。他运用了一些非常现代的几何元素，并且呈现出高级的质感：地面是黑白相间的大理石条纹图案，墙面也是相应的黑白色调，搭配玫瑰金不锈钢的线条。一张白色长沙发是经典的法式造型，用过几何线条，用现代的方式加以诠释。



The dome shape of the castle with the infinite cycle of space likes the wall of a western castle, a dramatic light and shadow division, virtual and real interweave, with unique rhythm and rhythm to open the exploration of dreams, from the source of fantasy to open the door of the unknown.....

城堡圆顶造型，无限循环的空间，像是西方城堡的城墙，一种戏剧化的光影分割，虚实交织，以独有的韵律性与节奏感开启着对梦境的探索，从幻想的源头打开未知之门.....



Deer can be seen deep in the cloud dream. The IMPLICATION OF COLOR AESTHETICS TO STYLIST, IS no less than THE CORNERSTONE THAT MAKES a DREAM IN SPACE, pushing the DEVELOPMENT OF DREAM. On the basis of understanding the vocabulary of “dream expression”, the designer metaphorizes the way of harmonious coexistence between man and nature. The display of animals and plants metaphorizes the protection and attention to the environment from a deep level.

云梦深处可见鹿。色彩美学的奥义之于设计师，不啻于空间造梦的基石，推动着梦境的发展。设计师在理解“梦境表达”的语汇基础上，隐喻着人与自然和谐共处之道，动植物的陈设摆放，从深层次隐喻对环境的保护与重视。

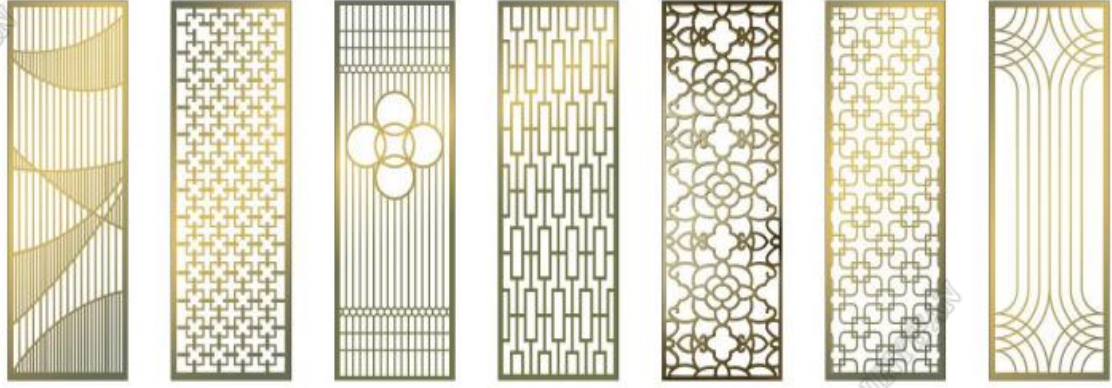




Great works of art are not as disappointing as life .
They don't always give us all the best in the first time.
——Marcel Proust

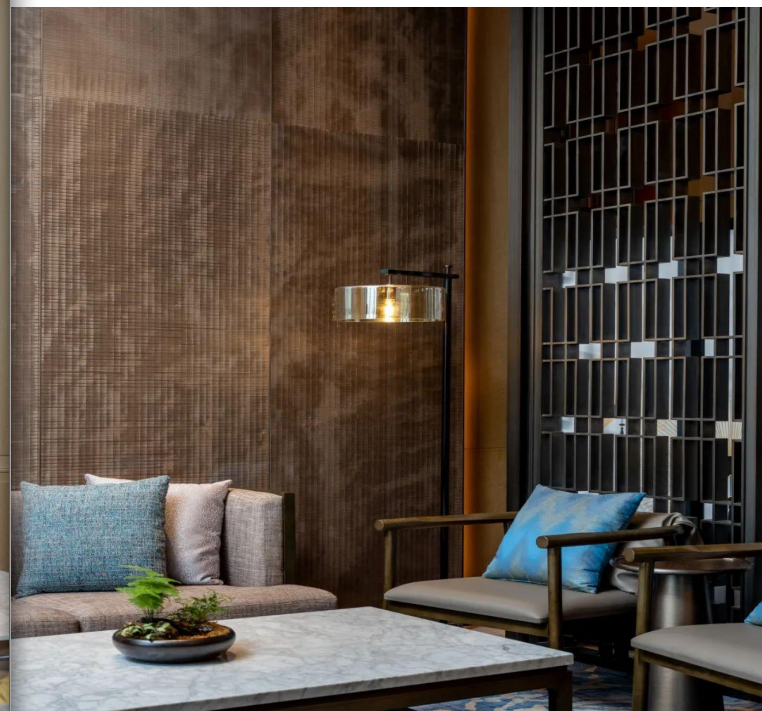
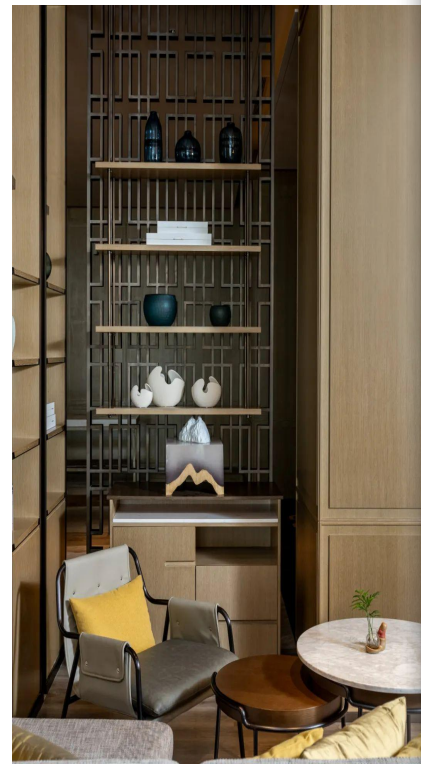
何处一屏风，分明怀素踪

伟大的艺术品不像生活那样令人失望，它们并不像生活那样总是在一开始就把所有最好的东西都给了我们。
——马塞尔·普鲁斯特

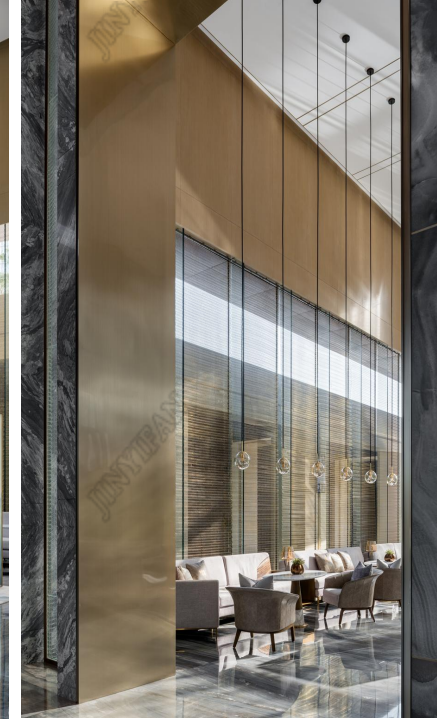




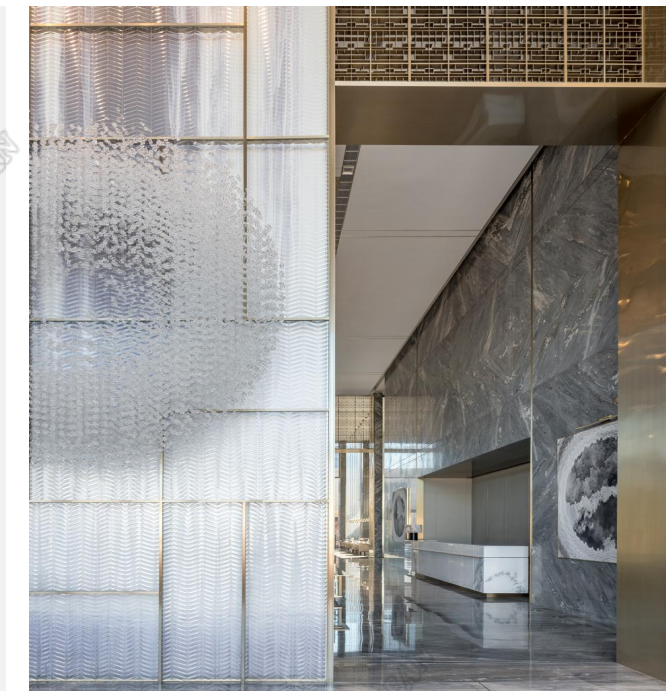
The towering screen creates an extraordinary sense of entrance ceremony, which echoes with the magnificent stone wall of Weiran as well as the city wall. Upon entering the lobby, you can feel the urban cultural temperature of Chengdu for thousands of years. 高耸的屏风营造气势非凡的进门仪式感，与巍然壮丽屹立犹如城垣的石墙相互呼应，一进大堂就能感受到成都厚积千年的城市文化温度。



The design of Wan Hui Xuan restaurant incorporates "width and narrowness". Open kitchen, counter, space echo each other, blend with each other. In the functional layout, the integration and continuity of the dining area limits, staggered screen design, so that the space is separated and continuous, reflecting the rhythm and diversity of space opening and closing. 万荟轩餐厅的设计融入了“宽窄”元素。开放式厨房，料理台，空间相互呼应，彼此交融。在功能布局上，将用餐区限度的交融和连续，交错排列的屏风设计，让空间隔而不断，体现出空间开合的节奏性与多元性。



As for the temperament of the space, he is also following the design of steed humanistic feelings. Choose rustic materials and combine them. For example, the screen and wall structure in the negotiation area are shaped by blocks, and in the block surface, with delicate details. Through this, the whole design achieves the purpose of both form and spirit. 至于空间的气质，他也在遵循设计骥驥人文的情怀。选用质朴的材料，进行组合。比如洽谈区的屏风和墙面结构，以块塑形，并在块面之中，搭配精致细节。借由此，达到形神兼备的目的。



If metal is mountain, glass is water. The exquisitely made metallic is like a touch of gentleness in firmness.
金属为山，玻璃为水，那一份玲珑剔透的质感，更像是坚固之中一抹温柔。



The space focuses on the harmonic effect in cold and warm colors, so that the space is clear and prominent priorities. In the combination of soft and hard clothes, the harmony between colors is fully taken into account, and the atmosphere of fashion and generosity in the space is permeated everywhere with French romance.

空间在冷暖色调上注重调和效果，使得空间主次分明、重点突出，在上做到软硬装结合，充分考虑到色彩之间的调和，营造出空间时尚大方的氛围之时，无处不在渗透出法式浪漫气息。



Elevator corridor hanging high "shell" decoration, increases its visual extension, stretches the space atmosphere and makes people feel the space unobtruded, comfortable and happy.

电梯延廊高垂“贝壳”挂饰，增加走廊的视觉延长性，拉伸空间氛围，使人身临其境而觉空间通畅，舒心愉快。

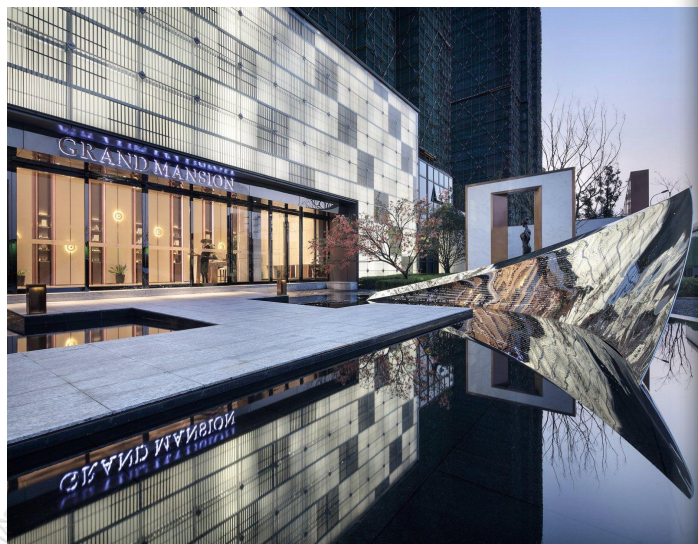




Poly Day Yue/保利天悦

Main materials: screen partition, bar counter, niche, tea table, decorative lines

主要材料：屏风隔断、吧台、壁龛、茶几、装饰线条



Screen can be used for partition to enrich dimensional administrative levels as different angles with opens and closes make space vision more changeable. 屏风不仅能做隔断，亦可丰富空间层次，因开合的角度不同令空间视觉更多变。



Zhongtian & Dajia&Songdu/中天&大家&宋都

Main materials: screen partition, bar counter, decorative lines, sculpture

主要材料：屏风隔断、吧台、装饰线条、雕塑



we never give up our pursuit for metal arts. For us every decoration project means a challenge. We remain using metal to bring more beauty to decorations, and then let art integrate into our works and space art add warmth to our life.

我们从未停止对金属艺术的追求。每一次的装饰工程案例，对于我们来说，都意味着对艺术空间的一次挑战。我们一直在追求金属带给装饰更多的美感，让艺术融入我们的作品，让空间艺术温暖我们的生活。



Reception hall is decorated with gray tone marble to build a low-key and practical space tone, supplemented by solemn atmosphere of metal embellishment, to build a muddy natural temperament, evoke a new field power

接待门厅以灰白色调大理石搭建低调实用的空间基调，辅以庄重大气的金属色点缀，构筑浑然而成的气质，唤起全新场域力量

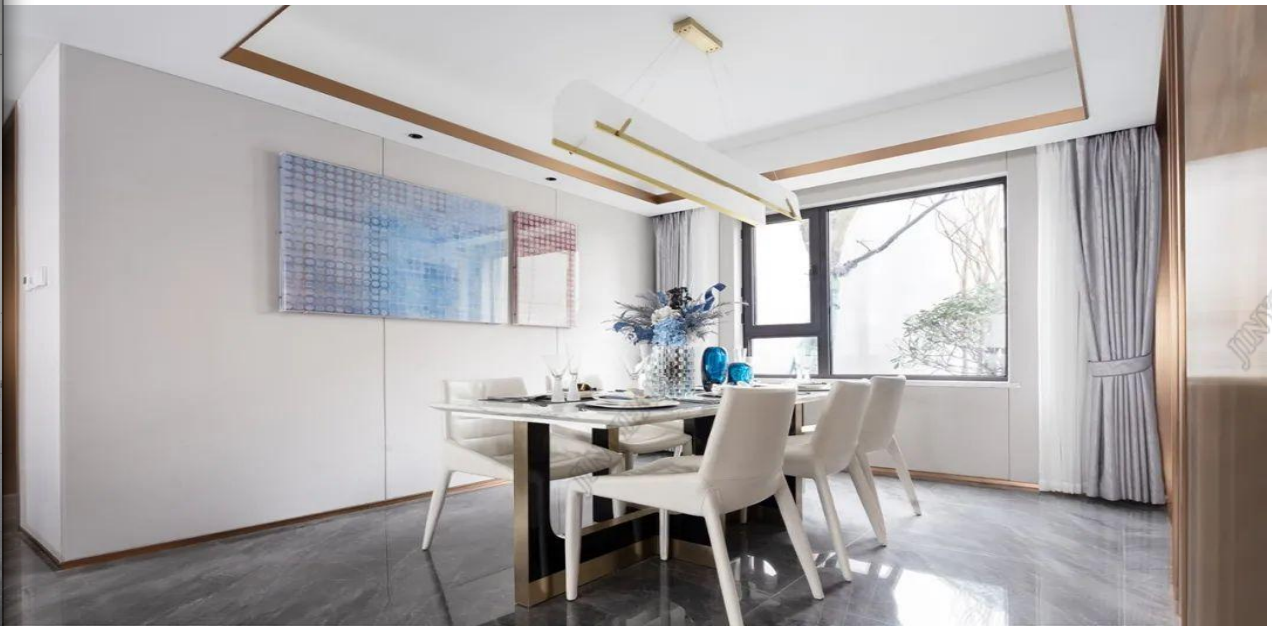


Bentley gold is the main color in the space while light color is the background color. The low-key and calm luxury gives people unlimited freedom and tolerance. Choosing gold color as the keynote of space narrative conveys life attitude and explains the interpretation of comfortable sense of belonging.

空间内以宾利金为主色调，搭配浅色系底色，低调沉稳的奢华给人以无限的自由包容。选择这一抹流金作为空间叙事的基调，传递生活态度，诉说关乎舒适归属感的解读。

The space composed of marble, metal and leather gives the space due texture and temperature with soft color of weak contrast, simple but returning to the original texture

大理石、金属和皮革构成的空间，以弱对比的柔和色泽、简约却又回归本真的肌理，给予空间应有的质感与温度



The delicate metal niches can be used to store small items such as card bags, keys, glasses and masks. The design of the porch background wall with rock board and wick glass is unified with the background wall of sitting room TV to increase the experience of exclusive sense of luxury house. 精致的金属壁龛存放卡包、钥匙、眼镜及口罩等小物品，方便归家出门随手存放。户内岩板加灯芯玻璃的玄关背景墙，其设计手法与客厅电视背景墙统一，增加了豪宅专属感的体验。



Reading and playing are the way to accompany children's growth. The combination of fashionable rock slab background wall and metal niche is the yearning of every family. 读书、游戏是陪伴孩子成长的方式，时尚岩板背景墙与金属壁龛结合，是每一户家庭的向往。



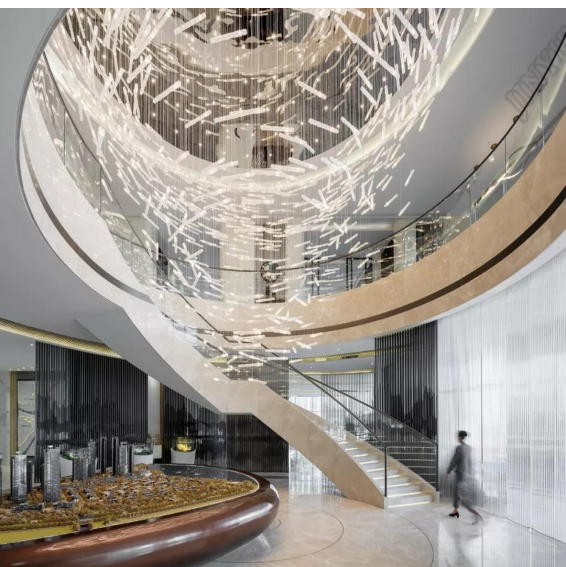
Luxury five-piece set is a symbol of quality, 270° beauty corner mirror cabinet is exclusive for the mistress to create, the main bathroom double basin design, three hole faucet, intelligent toilet, steel tub, constant temperature shower, electric towel rack configuration, plus metal niche design, to ensure the owner's comfort.

豪华五件套是品质的象征，270°美颜转角镜柜为女主人专属打造，主卫双台盆设计、三孔龙头，智能马桶、钢板浴缸、恒温花洒、电热毛巾架等配置，加上金属壁龛设计，保证业主使用的舒适性。



The golden color flows like water, the black longitudinal lines extend upward, the wooden grid arrangement gives the dense rhythm of the space, the atmosphere seems to be in, but also do not break the aesthetic charm of natural simplicity. The gold front desk presents a mirror effect, infiltrating the water's intelligence, and the warm light of the ceiling tacitly echoes.

金色如水般流泻，黑色的纵向线条向上延展，木栅排布出空间的疏密节奏，大气俨然中，亦不失自然朴质的美学风韵。金色的前台呈现出镜面效果，浸润着水的灵透，与天花的暖光默契呼应。



The light warmth of rice tonal, the temperament of grey tone, the furniture of modern feeling, the rules and irregularities of point, line and surface, because of the clever collocation and combination of the designer, below the inclined sunshine, make a tacit understanding and interactive relationship brewing in the meanwhile and let the people who place oneself in them feel coordinated and natural modern poetry.

米色调的轻暖，灰色调的气质，现代感的家具，点、线、面的规则与不规则，因设计师巧妙的搭配组合，在倾斜的阳光下，有一种默契和互动关系在其间酝酿，让置身于其中的人感受到协调而自然的现代诗意。



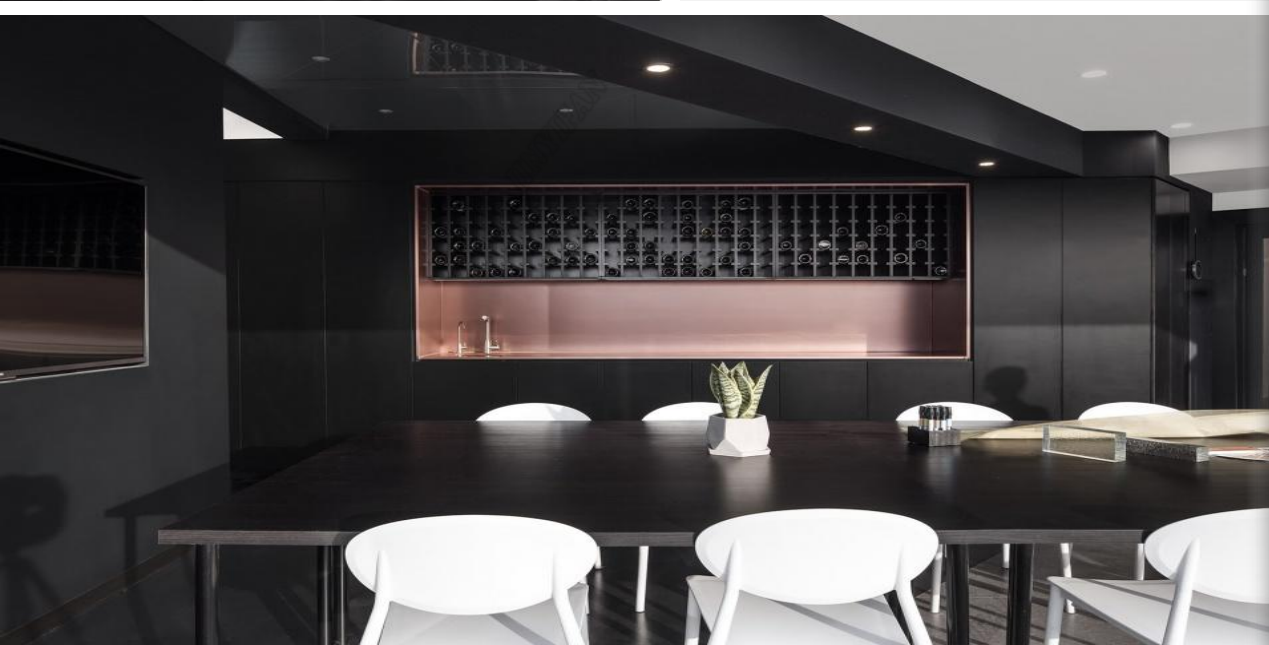


A beautiful view cannot be without wine, so we cut a piece of red metal against a dark background and filled it with wine. When the clouds of the sky are reflected on it, the ripples flow like swaying AGAR liquid flowing on the black canvas.

From the entrance's semi-foyer, the outdoor terrace features a wine cabinet made of red metal embedded in a black background
美景之下不能无酒，于是我们在黑的背景上辟出一片红色金属，以酒填满。当天空的云倒映其上，流转的波纹仿佛摇曳的琼浆玉液流淌在黑色的画布之上。从入口的半门厅看室外露台，黑色的背景板内嵌入由红色金属打造而成的酒柜



The subtlety of the garden lies in the flexibility of the space. We changed the suspended ceiling of the half-hall into mirror stainless steel to make it bright. From a distance, the second floor atrium gives out some air. A void doorway under the "atrium" is the boundary between the office area and the entrance area. It is also the frame scene of the transformation in the turning of the path. The second terrace is also the view of the distant Shanghai center, which is the second turning point of the path



园林的精妙在于空间的灵动，我们将半门厅的吊顶改为镜面不锈钢使其变得光亮，远远望去依稀是二层的中庭透出些气来。“中庭”之下一个虚空的门洞，是办公区和入口区的分界，也是路径转折中变换的框景，第二个露台将远处的上海中心也借景其中，此为路径的第二重转折



Although different areas are separated by walls and cabinets, no space is completely separated. Because we designed a few crevice and gap in the space intentionally, connecting the space again makes it achieve the effect that separates ALREADY HAS IS a WHOLE. The glasses are displayed on brass shelves with a wooden back. Two brass shelves connect the entire space.

虽然不同的区域借助墙和柜子被分隔出来，但是没有有一个空间是被完全分隔的。由于我们有意设计了空间中的一些缝隙和缺口，又将空间联系起来，使之达到既分隔有是一个整体的效果。眼镜陈列在有木制背板的黄铜展架上。两条黄铜展架将整个空间联系起



Facing the glass curtain wall, a thin brass frame supported by the glass structure is placed here in order to get sunlight and views while providing more display surface. The cabinet, birdbath and table are designed as a continuous part and become part of the interior wall. 面对玻璃幕墙，为了能够限度的得到阳光和视野，同时提供更多的展示面，一个被玻璃结构支撑的很薄的黄铜展架被放置在这里。柜子、水盆和桌子被设计成为一个连续的部分，变成了室内墙体的一部分。





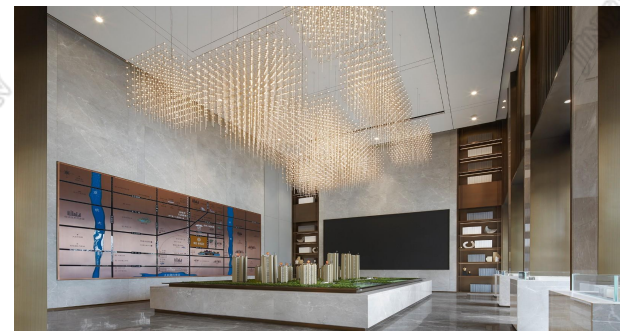
The cooperation between stone and metal is a skillful and tacit understanding that has long been in mind. Under the guidance of the mission of creating environment, nature, humanity and fashion are integrated into it.

石材与金属的协作，是早已心有灵犀的娴熟与默契，在造境使命的指引之下，自然、人文、风尚，都被融入其中。



The concise OF the whole is continued, WHAT the brushstroke turns is fresher pure, REACH THE DARK OF SWEET sincere FEELING is born, ALSO at the same time imperceptibly, planted the little INTEREST OF THE aesthetic.

整体的简洁被延续，笔锋调转的是更清新的纯粹，及温馨情愫的暗生，同时也于潜移默化间，种下了审美的小情趣。



The vertical partition, formed by bronze metal and combined with soft assembly decoration, glass, wood and paper art, are used to inject different levels and textures, so as to improve the life style and sensory experience of the whole space.

以古铜金属形成纵向区隔，结合软装配饰，运用玻璃、木质、纸艺等注入不同层次与肌理，提升整个空间的生活格调与感官体验。



Warm wood, metal, leather, cloth... Material elements jump in the space like musical notes, linking the space rhythm, natural texture and humanistic feeling of the negotiation area. 暖木、金属、皮革、布艺……材质元素如音符般跳跃在空间内，把洽谈区的空间节奏、自然质感与人文感受连结起来。



Designers distributes light grey sofa and stone tea table symmetrically, which sets off under brunet background wall and delicate wooden grille, gives one a feeling of bearing. 设计师将浅灰色沙发与理石茶几对称分布，映衬在深色背景墙和精致的木质格栅之下，给人气度之感。

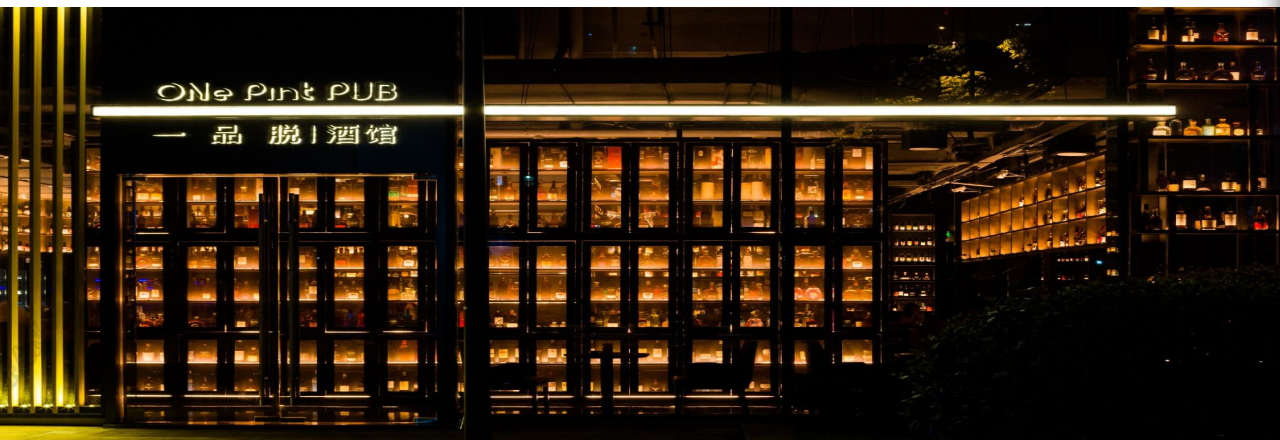
The circular wall lamp softened the original regular longitudinal lines to add a hint of tactfully to the negotiation area. Green glass and bronze metal is used as an ornament to enrich the space level by implication.

圆形壁灯柔和了原本规整的纵向线条，为洽谈区增添了一丝婉转。绿色玻璃及古铜金属作为点缀，使空间层次更加富有意蕴。



The central area is shaped like a cross around four slots, which is full of geometric sense. The custom lamps formed by the ring give out warm light corresponding to the welcoming pine, which not only echoes the ceiling, but also highlights the vitality of the space.

原建筑超大落地玻璃墙，过于开放与通透，对酒类的保存有所影响，与设计师所设想的酒吧方向有所冲突，在入口处设置超高幕墙双面酒柜，为整个空间制造一种深邃的神秘感。定制防紫外线半透光玻璃贴膜，即遮光，又有通透性。夜幕降临，外立面将室内的景象融入城市，动人的音乐和无隐晦的灯光意中唤起路过的人们进去一探究竟的欲望。



Wine tasting is divided into beer and cocktail area, while free seating area is convenient for customers to enjoy wine and Western food. The design of wine rack and ring bar around perfectly solves the problem of wine display. The scattered wine rack runs through the depth of the space, bringing texture and vitality to the space. Programmable lighting design enriches the colorful experience atmosphere.

品酒区分为啤酒与鸡尾酒区，散座区方便为顾客品享酒西餐。四周围合式酒架与环形吧台设计完美解决了酒的陈列问题，错落的酒架贯穿了空间的纵深，为空间带来质感与活力。可编程灯光设计，丰富了多彩的体验氛围。



Three-dimensional hanging wine rack makes the space more hierarchical. Oak finishes and leather upholstered furniture create a gentle comfort. The booth sofa highlights the continuity of space, presenting a quiet and tranquil temperament, where you can drink alone, and drink with friends.

立体悬挂式酒架使空间更具层次性。橡木饰面与皮质软包家具营造温和的舒适感。卡座沙发凸显空间的延续性，呈现静穆舒朗的气质，在此即能独自小酌，又能与朋友对饮。

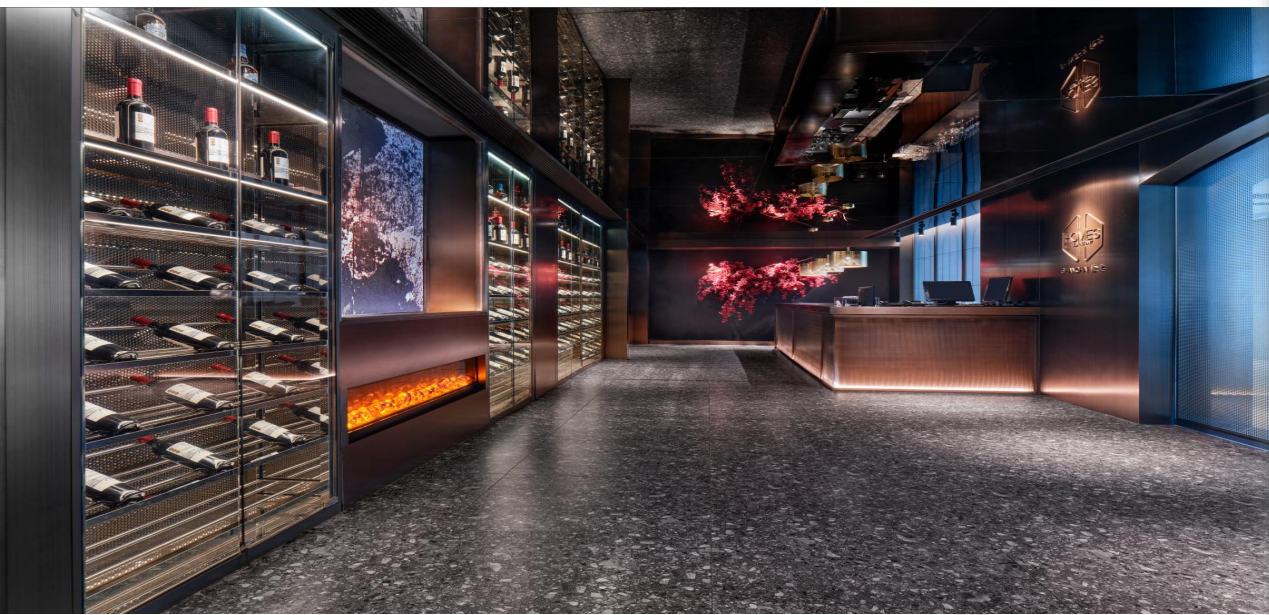




The designer has realized the coordination with the overall interior style of the building, which has the elegance of Jiangnan culture, as well as the modern and fashionable temperament, so that people's emotion and space style are fully expressed. 设计师实现了与整体建筑的室内风格相协调，既有江南文化的典雅，又有现代与时尚的气质，让人的情感和空间的格调都得到饱满的表达。



The open area of the restaurant is enclosed by the surrounding room, which can be opened and closed freely by mobile partition, making the space change more vivid and convenient to meet different customer needs. 餐厅的开放区域由周边包房围合而成，包房可移动隔断自由开合，令空间变化更加生动，便于满足不同的客户需求。



The central area is shaped like a cross around four slots, which is full of geometric sense. The custom lamps formed by the ring give out warm light corresponding to the welcoming pine, which not only echoes the ceiling, but also highlights the vitality of the space.

中心区域十字形环抱成四个卡位，几何感十足，圆环构成的订制灯具放出温暖光线与迎客松对应，既呼应了天花，也彰显了空间的活力。

ORIGINLITY PROCESS

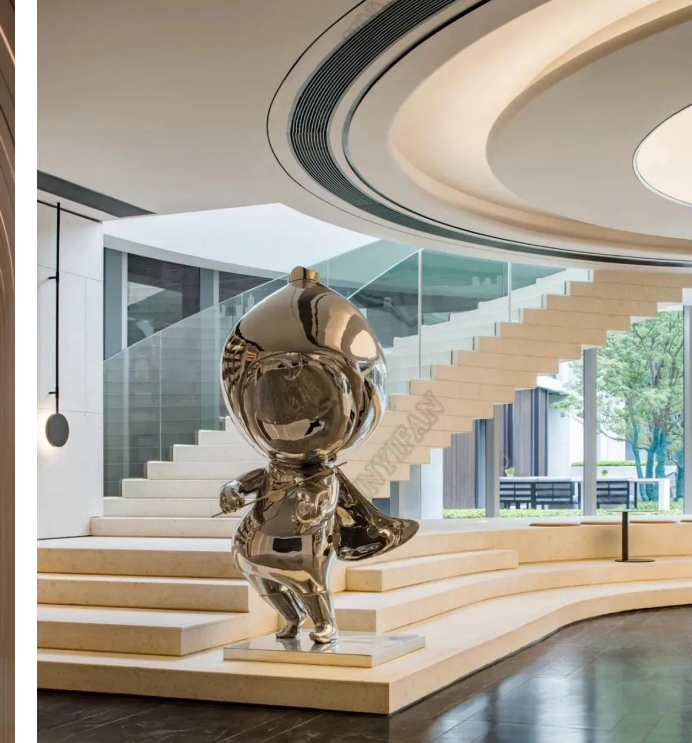
设计灵感

每一款设计，都凝结着设计师的灵魂；
每一个细节，都出自匠师的双手；
每一件作品，都是思想和工艺的完美绽放。

Every design shows the designer's ideas and attitudes;
every detail is handmade by craftsmen;
and every work is a great combination of thoughts and crafts.



Designers are well aware that changes in the environment affect children's perception of the world. Growth needs the care of light, rain water, clouds as well as family companionship. All kinds of elements under the guidance of the wind build the children's dream kingdom in nature. 设计师深知，环境的变化影响着孩子对世界的认知。成长需要光的呵护，雨水的浇灌，云朵的妙想，还有亲情的陪伴。种种要素，在风的指引下搭建起了自然里的童梦王国。



Stepping into the lobby, you are greeted by a dandelion art installation floating in the air, which symbolizes the origin of life and the beginning of everything. The flowing architectural lines on the top, just like the awakening breeze, blow the lint of dandelion, sow the seeds of hope, and extend the whole space. 步入大堂，映入眼帘的是飘悬于半空的蒲公英艺术装置，寓意着生命的起源，万物的起点。顶上流动的建筑线条，恰如唤醒生息的和风，吹开了蒲公英的绒絮，播撒着希望的种子，延伸了整个空间。



The spherical device on the top is shaped like a Newton's pendulum, shaking slightly. If each small planet opens the curious exploration of the physical world or the space universe for children, each step will bring the answer to the question closer. SNP captures inspiration in clusters, so that every space and nature seamless connection, heaven and earth bloom the charm of life in this to give every child a wind-chasing childhood. 顶上的球体装置形如牛顿摆，微微晃动，如若一颗颗小星球，给孩子开启物理世界或太空宇宙的奇趣探索，每上一级台阶，问题的答案便能更近一步。SNP于丛生中捕捉灵感，让每一处空间与自然无缝衔接，天地万物于此绽放生命的魅力，给每位孩子一个追风的童年。

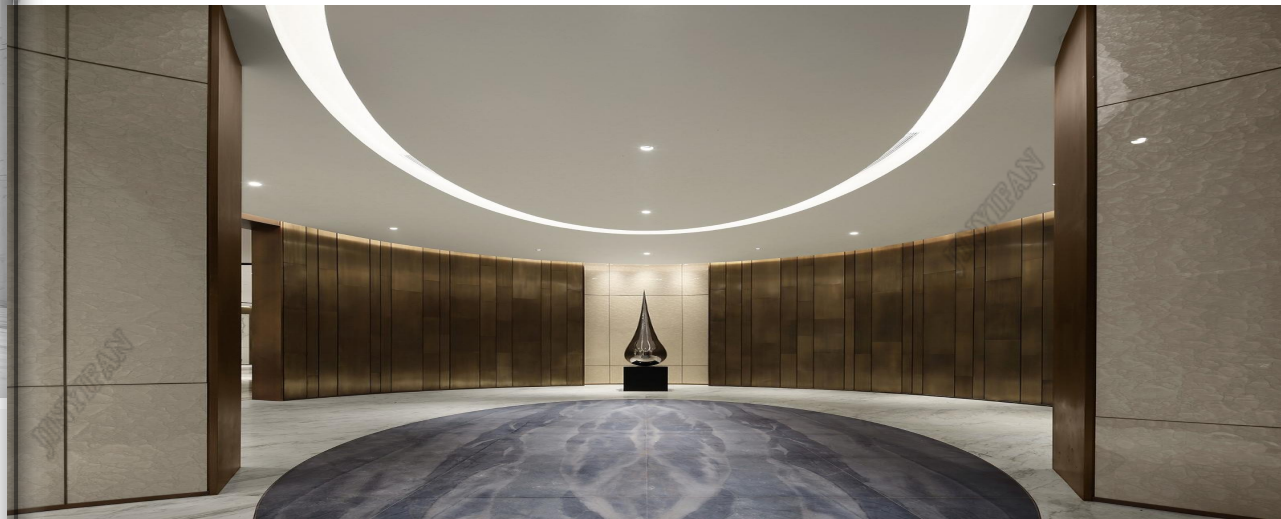


In the elevator hall, the crystal sculpture hanging from the ceiling is called "Gone with the Wind". The crystal beads are full of spots and bright as a fairy dress. Anish Kapoor's sculpture, rigid and soft form, mirrored metal reflecting material and environment, strong and dynamic lines cut through the silence of the space. 电梯厅中，从天花垂下的水晶雕饰名为《飘》，水晶珠斑斑点点，璀璨如仙女衣裙。Anish Kapoor的雕塑，刚中带柔的形体，镜面金属反射材质与环境映衬，硬朗而动感的线条划破空间的寂静。

Under the guidance of white marble, along the arc staircase, the function of the underground gradually enters the line of sight. The copper of the handrail and the outer skin of the elevator are consistent, and the dynamic arc is graceful into a wonderful rhythm. 在白色的大理石引导下，沿着弧形楼梯拾级而下，地下的功能逐渐进入视线范围，扶手的铜和电梯的外表皮一致，动态的圆弧婉转成美妙的韵律。



Love fades away, when destiny gets to its end of the way as well as life gathering and despersing, while the ebb and flow of the river is endless generations. In the elevator hall, the visual focus is on a quiet display of a drop of water in front of the barrier view, condensed Qiantang gene, converging into a bay tide and reflecting the world and standing peacefully with the world. 缘起缘灭，人生聚散大抵如此，而江水潮起潮落，则代代无穷尽。在电梯厅中视觉焦点集中在障景前安静陈列着一滴水，凝练着钱塘基因，汇聚成一湾潮水，倒映天下而与世无争。



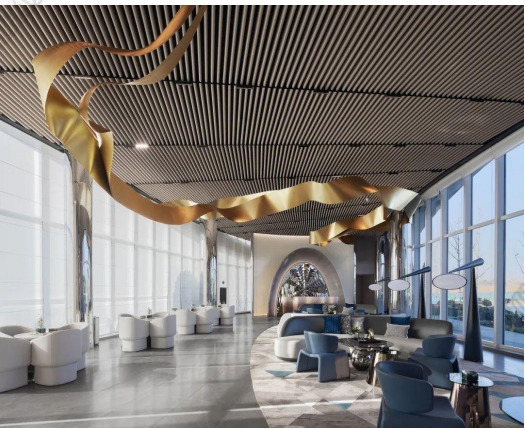
As for reception front office, designers use light ripples, dynamic and static interweave to make virtual and real print as the performance image. The water waves on the background are clear and smooth, which set off the front desk with blue glaze color. The contemporary sculpture in the form of platinum crystal rocks, transparent and delicate, is named "Coagulate Stone". 接待前厅设计师将轻波涟漪，动静交织，虚实相印作为表现意象。背景上荡开的水波层次分明，绵密柔顺如乐章，衬托着如雾蓝釉色的前台。铂晶山石形态的当代雕塑，透明精致，取名《凝石》。



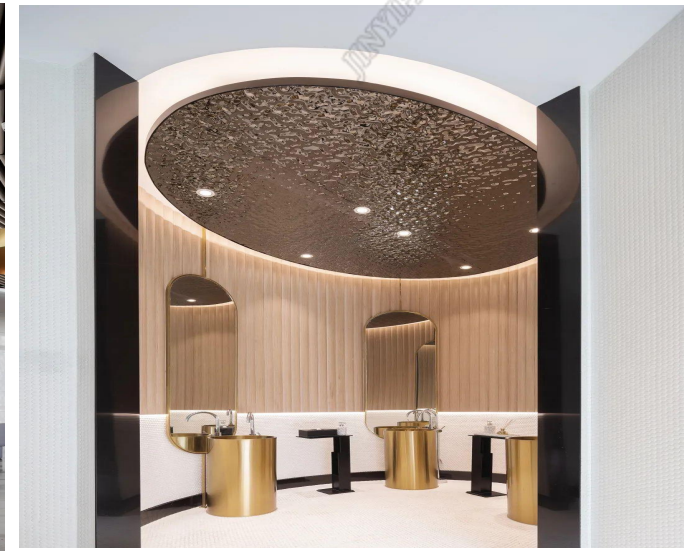
Stepping into the front hall, you are wrapped by the circular space. The distorted and undulating reception desk flows like waves on the water surface. The dandelion pattern on the artistic glass wall implies nature, making the space more vivid and temporality. The overall space is calm, simple and clear. The simple block and surface combination and the natural and refreshing color match so as to give people the comfortable feeling of clear water and wide sky. 步入前厅, 被环形的空间包裹, 扭曲起伏的接待台如同水面的波浪流动, 艺术玻璃墙面的蒲公英图案寓意自然, 使空间变得更加生动和具有时间性。整体空间沉静大气、简约明朗, 简单的块面组合, 自然清爽的配色, 给人水清彻地、空阔透天的舒适感受。



The spiral staircase, like a gust of wind, breaks the spatial visual calm with an upward posture. It not only serves as an upward extension of the spatial function, but also becomes a flowing sculpture. 盘旋而上的旋转阶梯像一阵风, 以向上的姿态, 打破了空间视觉上的平静, 既作为空间功能向上的延伸, 亦成为一个流动的雕塑存在。



The metal streamer art installation in the negotiation area is like the rolling river flowing through, connecting the past and future of the city, warmth and technology, blending the living temperature and the sense of future into the design aesthetics, creating a pleasant and beautiful urban buffer space for people to experience in the ever-changing society. 洽谈区悬置的金属飘带艺术装置如同绵延起伏的江水穿流而过, 亦连接城市的过往与未来, 温馨与科技, 将生活温度与未来感糅杂进设计美学之中, 为当下日新月异的社会构筑一个让人体验愉悦和美的都市缓冲空间。



The sand table area is the second annular space. Specular material is used to reflect on the top surface of the space, so that the space vision extends upward, overlapping and echoing, creating a multi-dimensional visual effect. 沙盘区为第二个环形空间, 在空间顶面利用镜面材质反射, 使空间视觉上向上延伸, 交叠呼应, 营造出了多维的视觉效果。

The combination of mirror and metal injects tension and a sense of future into the whole space. In the human scale of the upper space, the double volume sense is stretched. In the middle space, the change of material is used to guide the vision. In the lower space, the sphere is used to add movement to the linear and serious space.

镜面与金属的结合为整个空间注入张力与未来感。在以人为尺度的上层空间进行双体量感的拉伸，中层空间利用材质的变化引导视觉，下层空间利用球体为线性严肃的空间增添动感。



The main color of the space is white, with mirrors and stainless steel to create a futuristic feel. The fun blue doll is in the center of the column, breaking the rules while bringing a touch of color to the space.

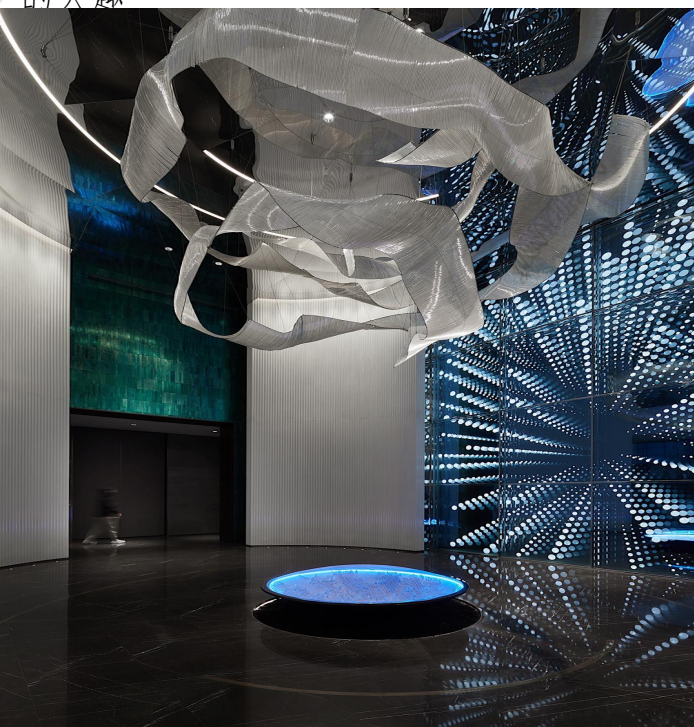
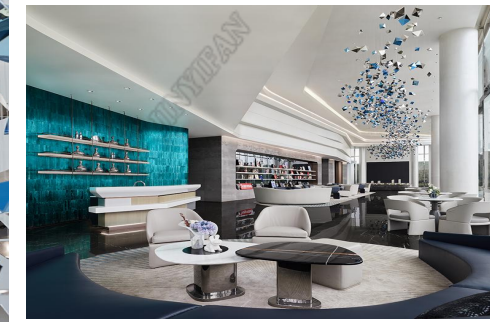
空间主色调为白色，配以镜面和不锈钢打造未来感。蓝色的趣味玩偶处于柱体中央，打破规矩的同时为空间带来一抹色彩。



Water drops, the convex lens of the mapping, makes the courtyard of the four hours of flowers condensed in the tiny crystal clear. When dripping down, it is like ripples in this boundless water, breeding hope which is a place for a collection of sea gulls gathering and heaven for koi fish swimming. 水滴也是映射的凸透镜, 将庭院的四时花开, 凝结于微末的晶莹剔透之中, 滴落下来就荡开涟漪成就弱水三千, 孕育希望, 一派沙鸥翔集, 锦鲤游泳的天趣



In the West, Saturn is known as Cronus, and the rings around it are the cloud necklace of the god of Love, guarding her love and winding in glorious splendor, light and gorgeous. 在西方, 土星被称为克洛诺斯, 它周围的光环, 就是爱神的彩云项链, 守卫着她的爱情, 在壮丽的辉煌中曲折蜿蜒, 轻盈绚烂。



The dynamic sculpture spins the stars and glows with energy from hundreds of millions of light years away, making the space even deeper and deeper. A kind of futuristic situation has been iterated more and more mature appearance in sales center design. 动感的雕塑旋转出熠熠星光, 闪烁着来自数亿光年远的能量, 让空间越发玄远幽深。一种未来主义的情势, 已经在今天的销售中心设计中迭代出越来越成熟的面貌。

A jade belt pavilion corridor runs through the verdant courtyard of the demonstration area, turns around the winding pool bank, and guides visitors by the lighted light belt to enjoy the diversified urban life presented by the model rooms. 一条玉带亭廊贯通示范区苍翠掩映的庭院, 转过蜿蜒的池岸, 点亮的光带引导来客, 一赏样板间所呈现的多样化的城市生活面貌。 Design is the concrete expression of life style, art is alive, is destined to face the future 设计是生活方式的具体表现, 艺术是活的, 是注定要面对未来的





Finally, we focus on the black swan swimming in the natural landscape and take its black color as the overall tone of the space. The red art installation enlivens the space atmosphere, echoing the red on the head of the black swan and presenting the visual focus here.

The wave board on the wall of the dining area is designed to act as a ripple water pattern, adding a sense of hierarchy in the dark space.

终着眼自然景观中戏水的黑天鹅，将其黑色作为空间整体色调。以红色艺术装置活跃空间氛围，呼应黑天鹅头顶一抹红色，将视觉聚焦点呈现于此。

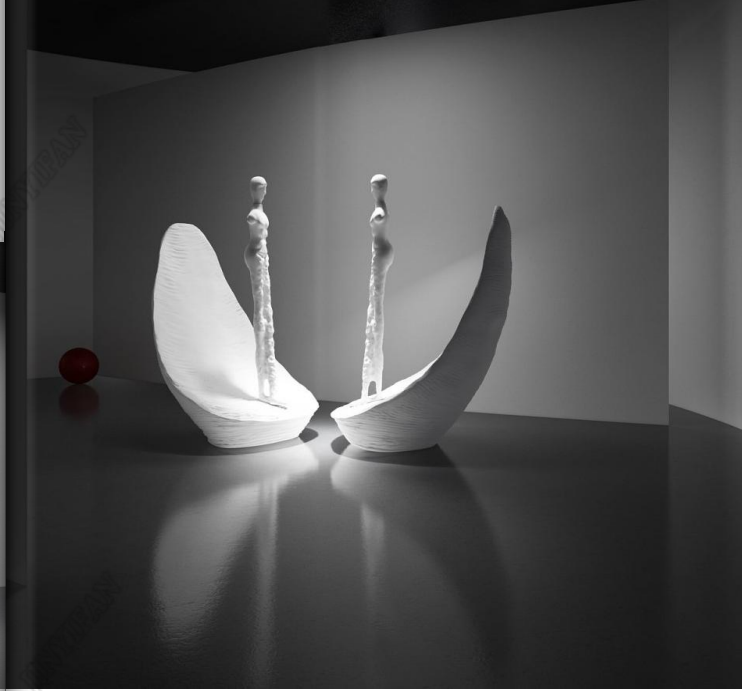
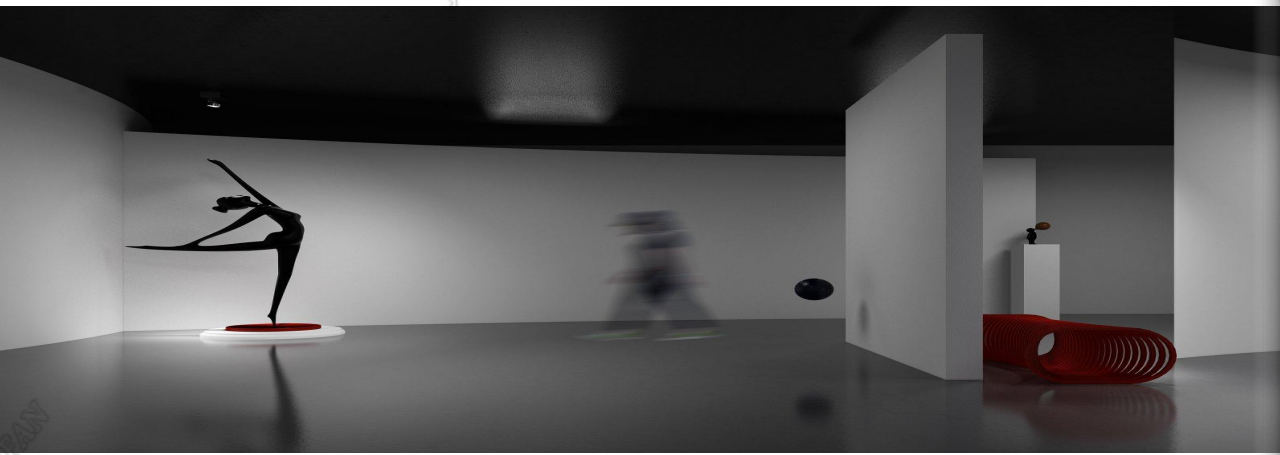
就餐区墙体波浪板拟作涟漪水纹，在暗色调空间内增加层次感。



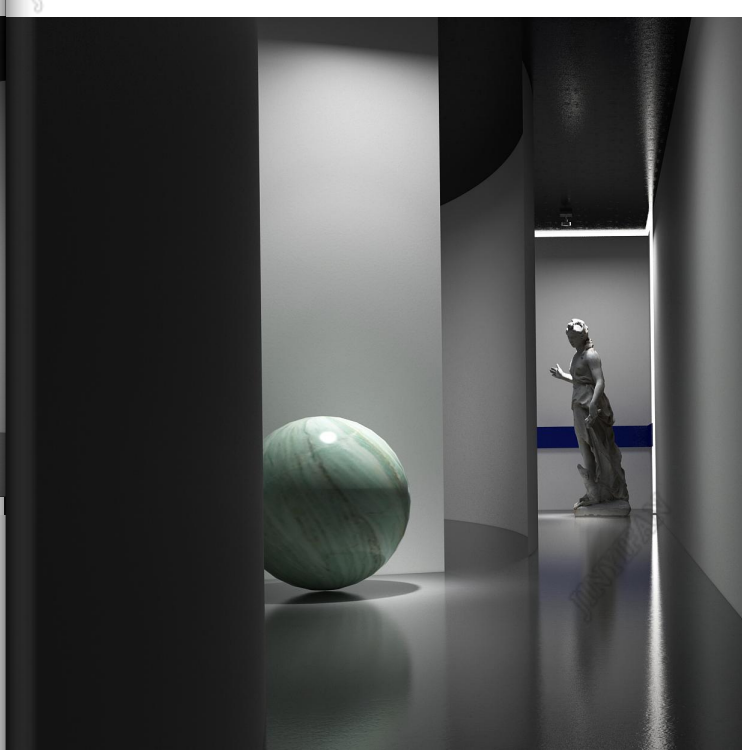
The layout of the lamps and lanterns at random made by Designers personally in dinner area breaks a regular pattern to stimulate space dynamic feelings. 设计师亲自设计的灯具高低错落地排布在用餐区，以点状排布打破空间过于规整格局，激发空间灵动感。



“Every man is an island. You can't make land any closer.”
This is the fundamental charm between the arts. It is also the emotion that space can bring.
“每个人都是一座孤岛. 离得再近也无法连成一片陆地.”
这便艺术之间根本的魅力. 也是空间所能带来的情感.



I think: endow space without matter with crafts full of stories.
Scene transformation between sculptures in the light and shadow defines loneliness and faith.
Maybe she was really lonely. But find the fire in her heart between the sculptures.
Maybe the emotion she's giving off is really strong, while she can perceive puzzles of mountains and rivers between the walls.



我想: 将失去物质后的空间. 赋予携带故事的工艺品.
在这光影之间. 雕塑之间的场景转化. 便也诠释了. 孤寂. 与信仰.
或许她真的很孤寂. 但却又能够在雕塑之间. 找寻到心中的炬火.
或许她所散发的情感真的很强烈. 但却又能够在墙体之间. 感知到山重水复般的困扰.

I want light to go hand in hand with sculpture, which defines the story by its form.
I want to use the structure to create his loneliness. I want them to be tied to each other.

我想让光携手雕塑并肩前行着. 用形式去衬托着故事
我想用构造去打造他的孤寂.
我想让他们相互牵绊着.

The open space form creates a multifunctional reading area. Reading, business, social and other contexts converge here. Instead of simply superimposing rich life scenes, the designer hopes to bring a more comfortable immersive lifestyle experience through the balanced presentation of arts, humanities and commercial functions.

开放的空间形态打造出多功能的阅读区域。阅读、商业、社交等多重情境在此融合。设计师不是单纯的将丰富的生活场景叠加，通过艺术、人文、商业等功能的平衡呈现，希望带来一种更为舒适的沉浸式生活方式体验。



The designer constructed a new activity place through the scene design. The overall space improves customers' social attributes through diversified modes, explores the fun of life, and feels the romantic atmosphere of natural life and culture and art

设计师通过场景设计构造了一种新的活动场所，整体空间通过多元化的模式从而提升顾客社交属性，探索生活乐趣，感受自然生活与文化艺术的浪漫氛围。



Due to the moderate size of the hotel, the space is highly interactive, so the overall use of a unified approach makes the space complete and full of rhythm. Light aluminum honeycomb as a natural material integrates the tone of the hotel, giving a warm and friendly feeling. Next to the International Horticultural Exhibition is the most appropriate. The white and warm gray stone and the artistic paint with the same texture enrich the background detail sense; Playful veins pattern lively jump in the main area of the hotel, full of natural aura, dark metal cabinet edge for the hotel to increase the delicate beauty.

因酒店规模适中，空间互动性很高，所以整体采用了贯穿统一的手法，令空间完整又富有韵律。浅色铝蜂窝、作为天然的材料整合了酒店的基调，给人温润亲和的感受，坐落在世园会旁边是再合适不过。米白暖灰的石材及同纹络的艺术涂料丰富了背景的细节感；俏皮的叶脉图案活泼的跳跃在酒店的主要区域，充满自然灵气，深色的金属柜边为酒店增加了精致的美感。



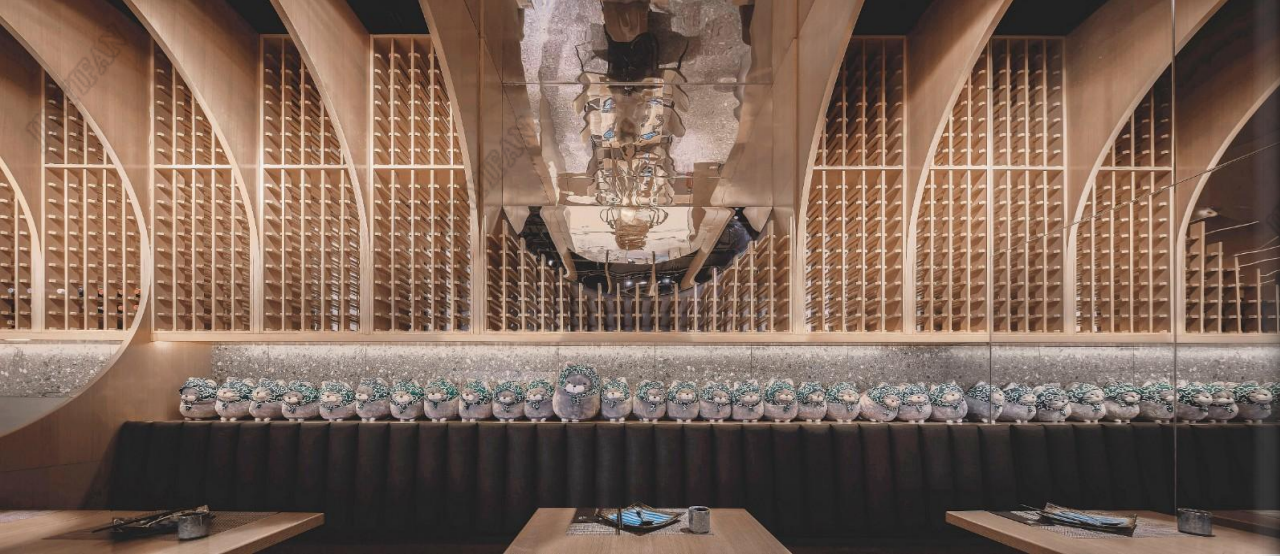
Through the elevator hall in the center of the lobby, there is an interesting sixth floor in the rear. Looking up, it looks like a secluded place in the deep forest. Bathing in the rest area of the sun room is also very pleasant, and walking through the sun room, there is a small outdoor garden outside the hotel.

穿过大堂中心的电梯厅，后方是一处有趣的六层挑空，向上看去这里像是森林深处的别有洞天，沐浴在阳光房里的休息区也是格外惬意，走过阳光房便可以进入酒店室外的一片户外小花园。



The ceiling and floor decoration continue the geometric elements of the meeting area, and the colors are brighter and lighter. The gym is visually connected to the public corridor through floor-to-ceiling glass, which radiates the energy of the movement.

天花和地面的装饰延续了会议区域的几何元素，色彩更加明亮轻快。健身房通过落地玻璃与公共走廊视觉连通，将跃动的能量发散出去。



The architect composed the romantic connotation of “South of Colorful Clouds (Yunnan)” with the rhythm of clouds and the light and shadow of jacaranda, and combined with a variety of artistic design techniques to depict the dreamy and comfortable land that people yearn for -- Landing Yan Domain • Yan Xuan space. 建筑师以云的韵律、蓝花楹的光影谱写出“彩云之南（云南）”的浪漫意蕴，并结合多种艺术设计手法刻画出入心所向往的梦幻安逸之境——兰町艳域·严选空间。



Use ALUMINUM honeycomb, stainless steel and wood color to show a kind of fashion, healthy space experience. While satisfying multiple space needs, designers create a pleasant, relaxed and pleasant space environment through the processing of spatial rhythm, sequence and hierarchy. 运用铝蜂窝，不锈钢与木色表现出一种时尚、健康的空间感受。设计师在满足多重空间需求的同时，通过对空间节奏、序列、层次的处理，塑造出意境美好、轻松愉悦的空间环境。

The architect applies the mirror to the two faces of ceiling and partition wall, so that many mirror reflections extend the vision of the person, forming the infinite dream of the combination of virtuality and reality like “kaleidoscope” to break free of the bondage of small space. 建筑师将镜面运用于天花及隔断墙的两个面，使多处镜面反射延伸了人的视觉，形成如“万花筒”般虚实结合无限梦境，挣脱了小空间的束缚

