

Table of Contents

◆ Standard products

Elevator advertising machine.....	01
Electronic class sign all-in-one machine.....	02
LCD advertising machines (wall-mounted and vertical).....	03
LCD monitor.....	05
Bevel touch all-in-one machine	06
Touch inquiry all-in-one machine(Wall-mounted,Horizontal,Vertical)	07
Touch teaching all-in-one machine	11
Touch meeting tablet	15
Conference smart touch all-in-one.....	17
Electronic water brand advertising machine.....	19
Semi outdoor high-brightness screen.....	20
Double-sided advertising machine.....	21
Picture frame Ad machine.....	22
Outdoor advertising machines.....	23

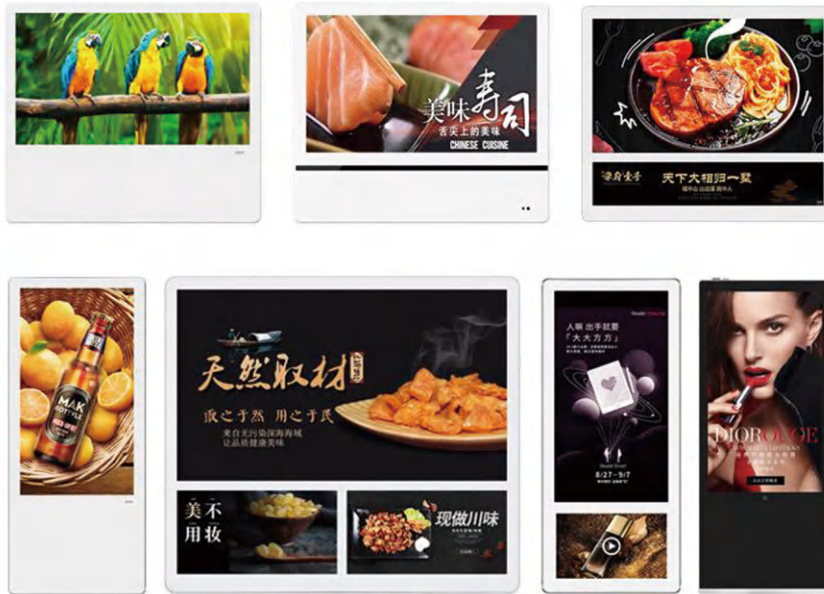
◆ Special products

LCD splicing screen.....	25
Touch coffee table	27
Transparent display cabinet.....	28
Electronic-book flipper.....	29
Interactive slide screen	30
Party building advertising machine.....	31
Other cabinet customization.....	33
Self-service terminal.....	34
Queue management machine.....	35
Hospital triage and queuing system.....	39
Hospital self-service report kiosk	42
Smart ward call system	43

◆ High-end customization



Elevator advertising machine



Product Features

1. Ultra-thin and ultra-light design, convenient and aesthetically pleasing to use.
2. High resolution, high contrast, high brightness, greatly improve the picture hierarchy, can better express details; surface tempered glass protection: anti-theft lock protection equipment and date security;
3. Available in landscape and portrait modes; supports scheduled power on/off for 24/7 unattended operation. The professional-grade LCD screen delivers brighter video images with enhanced 3D immersion.
4. 8bit-16.7M Color, the picture is more natural, the picture is really fine without tail;
5. Exceptional longevity lifespan with 7×24-hour continuous operation, capable of reaching 50,000-60,000 hours.



01

Main Function

- ◆ 1. The original HD hard screen resolution can reach 1920*1080 with 178° wide-angle display, large screen and true-to-life colors.
- ◆ 2. Built-in WIFI with stable signal reception.
- ◆ 3. Smart split screen with multiple built-in templates - one-click application; seamless switching, images and videos can be mixed.
- ◆ 4. Multimedia Information Management System for intelligent information release.
- ◆ 5. Cloud management: you can remotely manage off-site advertising machines through mobile phones and computers; supports mobile phone, screen projection, mobile phone management and program release, etc.
- ◆ 6. Time-sharing playback, smart timer for power on/off; automatically detects USB drives and plays content when inserted.
- ◆ 7. You can freely set LOGO, weather, time, and scrolling captions; supports multiple file formats, and images and videos can be played in a loop.

02

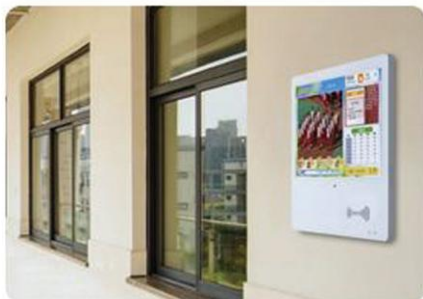
screen size





Product Features

1. The electronic class sign is a multimedia information release system integrating collection, consolidation, transmission, and publication. The electronic class sign software comprises three platforms: the class sign terminal, the integrated management platform, and the parent/teacher WeChat terminal.
2. Through the electronic class board, the information communication between the school, teachers, students and parents is deeply connected, which effectively promotes the reform and innovation of the education mode.
3. Teacher: Access attendance records, view class schedules, manage class photo albums and honors, check school notifications, and adjust backend settings.
4. Parent: Receive student notifications, get absent reminders, view messages, check homework assignments, check personal schedules, and view rankings.
5. The high-definition LCD screen features an industrial-grade A-frame display with vibrant colors, high color accuracy, and exceptional image quality.
6. Extremely long lifespan: Low power consumption, ultra-long stable operation, featuring a wide viewing angle and high-brightness industrial-grade LCD screen.



01 MainFunction

- ◆ **School Promotion:** Showcase the school's distinctive educational features, faculty strength, news updates, and student achievements.
- ◆ **Smart Applications:** Integrate smart hardware into campus digital applications to create an authentic smart campus and facilitate extracurricular expansion.
- ◆ **Interactive Communication:** Build a practical, convenient, and scenario-rich platform for teachers, parents, and children to interact and exchange ideas about learning and growth, suitable for teaching and office use.

- ◆ **Teaching Office:** Provide schools and teachers with convenient teaching management tools to enhance the level of school informatization management; abundant educational resources help children develop their talents, expand their knowledge, and enhance their intelligence during their free time.

The flat tempered glass panel is dustproof and waterproof; the IPS display and panel design with pure flat tempered glass effectively prevents dust and water from entering the device through the front panel.

02 Screen size

- 15.6"
- 21.5"
- 32"



Wall-mounted LCD advertising machine

竖屏 ▶

▼ 横屏



Product Features

1. The whole machine adopts industrial design, high reliability and high stability.
 2. The whole machine adopts side-lit ELED backlight for better brightness uniformity and more delicate and realistic color range.
 3. The heat dissipation area is larger, the surface temperature of the shell is low, and the long-term load work is worry-free.
 4. The whole machine is made of metal structure, which is solid and integrated, safe and anti-theft, anti-destroy, and perfectly matched with the profile frame.
 5. The front frame is made of aviation-grade aluminum, with sandblasting and brushing treatment. Ultra-thin quadrilateral front frame, the thinnest part is only 18mm;
 6. High transparency display tempered glass, 3mm tempered, screen printing black edge 20.3mm.
- All main board and electronic materials positive packaging process, convenient for the whole machine production and maintenance.



01 MainFunction

- ◆ 1. The original HD hard screen resolution can reach 3840*2160 with 178° wide-angle display, large screen and true-to-life colors.
- ◆ 2. Built-in WIFI signal reception is stable; supports free switching between landscape and portrait modes.
- ◆ 3. Smart split-screen with loop playback and multiple split-screen modes; Multimedia information management system for intelligent information publishing.
- ◆ 4. Cloud management: you can remotely manage off-site advertising machines through mobile phones and computers; supports mobile phone screen projection, mobile phone management and program release, etc.
- ◆ 5. Time-sharing playback, smart timer for power on/off; automatically detects USB drives and plays content when inserted.
- ◆ 6. You can freely set LOGO, weather, time, and scrolling captions; supports multiple file formats, and images and videos can be played in a loop.

02 Screen S ize





Product Features

- 1.Ultra-thin and ultra-light design, convenient and aesthetically pleasing to use.
- 2.High resolution, high contrast, high brightness, greatly improve the picture hierarchy, can better express the details; Surfaces protected by tempered glass and anti-theft locks safeguard your device and information security.
- 3.The professional-grade LCD screen delivers brighter video images with enhanced 3D immersion.
- 4.8bit-16.7M Color, the picture is more natural, the picture is really fine without tail;
- 5.Exceptionally long lifespan with 7×24-hour continuous operation, capable of reaching 50,000-60,000 hours.
- 6.Powered by mainstream Android chips, it delivers robust video processing capabilities and supports most video formats with decoding support.



01 Main Function

- ◆ 1. The original HD hard screen resolution can reach 1920*1080 with 178° wide-angle display, large screen and true color.
- ◆ 2. Built-in WIFI with stable signal reception; smart split screen with multiple built-in templates for one-click application, seamless switching, and mixed playback of images and videos.
- ◆ 3. Multimedia Information Management System for intelligent information release; cloud management allows remote control of off-site advertising machines via mobile phones or computers, and supports phone screen mirroring and program management.
- ◆ 4. Time-sharing playback, smart timer for power on/off; automatically detects USB drives and plays content when inserted.
- ◆ 5. You can freely set the LOGO, weather, time, and scrolling captions; supports multiple file formats, including images and videos, for loop playback.

02 Screen Size





Product Features

1. LCD has the characteristics of high resolution, high brightness, high contrast, wide viewing angle, clear display, low distortion, uniform brightness, etc. Automatic identification of video format PAL/NTSC.
2. Two control modes: RS232/RS485 control and infrared control. The all-metal construction ensures zero electromagnetic radiation and interference resistance.
3. Its H2S wide dynamic range technology effectively resolves distortion and signal attenuation during secondary playback of the main control unit.
4. The LCD monitor supports multiple signal inputs including analog VGA, digital DV1, HDMI, chroma component, DP, and USB interfaces.
5. Featuring cutting-edge color correction and unique wide-angle processing technology, it delivers professional-grade image processing for both motion and still content, with a viewing angle exceeding 178°.
6. The specialized image contouring circuit further enhances image sharpness, producing crisp contours and richer depth.
7. It has high reliability, high stability, long service life, industrial power module, low noise fan heat dissipation system, system stability and reliability; The system is designed to operate continuously for 7x24 hours, and the mean time between failures is required to be more than 60,000 hours.



01

Main function

- ◆ 1. The original HD hard screen resolution can reach 3840*2160; supports multiple signal inputs and is suitable for various monitoring and display applications.
- ◆ 2. 3D digital noise reduction can reduce the noise interference of weak signals; the powerful fan maintains stable operating temperature to protect the overall lifespan of the equipment.
- ◆ 3. 5ms ultra-fast response, crystal-clear images with no flicker or trailing; 178° wide-angle field of view, ensuring sharp clarity from any angle.
- ◆ 4. Selected LED quality panel, up to 98% wide color gamut; metal shell, anti-static, anti-magnetic field, anti-strong interference; gorgeous color, using advanced LED backlight technology.
- ◆ 5. Energy-efficient, eco-friendly, and low-power; blue light filtering, screen stabilization, and eye protection; factory hardware ensures 7x24x365 days of uninterrupted operation.

02

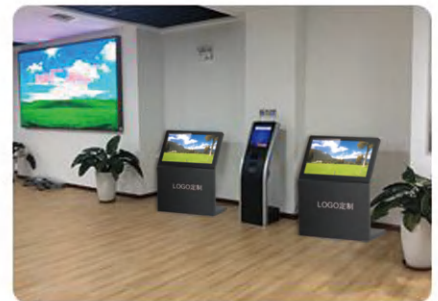
screen size





Product Features

- 1.The machine features an industrial-grade design, delivering enhanced overall aesthetics, superior reliability, and improved stability.The device uses ELED, while the 75/86 models feature DLED backlighting.
- 2.The entire unit features a robust sheet metal structure, offering integrated safety against theft and damage; its large heat dissipation area ensures low surface temperature, guaranteeing worry-free long-term operation under heavy loads.
- 3.The meticulously designed sloping angles and rounded edges create a robust yet elegant appearance, while the high-tranparency tempered glass offers explosion-proof protection and flexible touch control. The built-in modular motherboard enables seamless expansion for diverse applications.
- 4.The installation is simple, and all the components are designed with a positive structure, which is convenient for the production and maintenance of the whole machine.Touch method: Infrared touch or capacitive touch is available.



01 Main function

- ◆ The original HD hard screen resolution can reach 3840*2160
- ◆ With 178° wide Angle, still clear from multiple angles Multi-touch, responsive touch, and support for multiple touch gestures
- ◆ Customize query content and support custom software development
- ◆ Zoom in and out by scrolling through the images User-friendly design, easy maintenance

- ◆ Built-in WIFI signal reception is stable
- ◆ Customizable appearance and functions
- ◆ Supports Android and Windows systems
- ◆ Extremely long standby time, stable performance, and 7*24 hours of uninterrupted operation
- ◆ User-friendly design, easy maintenance;
- ◆ The device powers on and starts automatically, eliminating the hassle of manual power cycling.
- ◆ Multiple colors available, including silver, black, and white.

02 Screen size





Wall-mounted touch all-in-one machine



Product Features

1. The machine features an industrial-grade design with high reliability and stability. The device features a side-entry ELED backlight, delivering superior brightness uniformity and a more refined true-to-life color gamut.
2. The integrated aluminum plate heats sink provides a larger heat dissipation area, ensuring lower surface temperature on the casing and reliable long-term operation under heavy loads.
3. The entire unit features a robust sheet metal structure, designed as a single unit for enhanced security against theft and vandalism, with a perfectly matched profile front frame.
4. Aviation-grade aluminum with sandblasting and brushing finish, featuring an ultra-thin quad-edge front frame that measures just 25mm at its thinnest point. high transparency display tempered glass (3MM tempered, screen printing black edge 17.45MM), 100-ton stamping of hardware back panel to ensure the body is strong and show the curved line.
5. All motherboards and electronic components are pre-assembled for streamlined production and maintenance; the package includes internal wiring, 1 AC socket, 1 boat-shaped switch, 1.5M power cable, and 1 Wi-Fi antenna; touch mode: infrared touch or capacitive touch is optional.



01 Main function

- ◆ The original HD hard screen resolution can reach 1920*1080 with 178° wide angle, still clear from multiple angles; supports free switching between landscape and portrait modes.
- ◆ Multi-touch, responsive touch, and support for multiple touch gestures; customize query content and support custom software development; images can be zoomed in and out when browsing.
- ◆ Built-in WIFI signal reception is stable; supports Android and Windows systems; extremely long standby time, stable performance, and 7*24 hours of uninterrupted operation.
- ◆ The device powers on automatically, eliminating the need for cumbersome power cycling; multiple colors available, including silver, black, and white; customizable appearance and functions.

02 Screen size



Touch inquiry integral Machine



Product Features

1. All cabinets are constructed with premium cold-rolled steel plates, featuring a luxurious five-layer gold automotive-grade paint finish. Customizable colors are available, offering versatile, modern, minimalist, and personalized designs. The frames incorporate rust-proof, anti-magnetic, and anti-static features.
 2. The cabinet features a three-dimensional speaker system, a built-in magnetic speaker, standard network ports, USB ports, and a power supply panel.
 3. Display section: Features a brand-new industrial-grade LCD screen; Touch interface: supports capacitive touch and high-precision infrared touch.
 4. Peripheral functions can be customized as needed, including cameras, metal password keypad, 64-bit metal explosion-proof keyboard, and more.
- Ideal for: Corporate and institutional lobbies, hotel reception areas,
and all public spaces or commercial establishments requiring information display and interactive queries.
5. Featuring ergonomic design and low-maintenance operation, the system supports both Windows and Android platforms with low power consumption, efficient heat dissipation, and stable performance.



01 Main function

- ◆ Customizable shape, color, and function based on customer requirements; extend with various functional accessories to meet different application requirements.
- ◆ Touch query system integrates text introduction, picture display, url link and other functions into one; accurate touch, instant response, using original infrared/capacitive touch screen.
- ◆ High definition display with 178° large viewing angle, clear from multiple angles; built-in WIFI signal reception is stable.
- ◆ The ergonomic design is stylish and aesthetically pleasing; various independent designs, easy to load and unload, and easy to maintain; the product delivers stable performance with dustproof, anti-glare, and anti-interference features.
- ◆ Optional Android/Windows system, install any software you want; plug and play, no on-site installation and commissioning.

02 Screen size

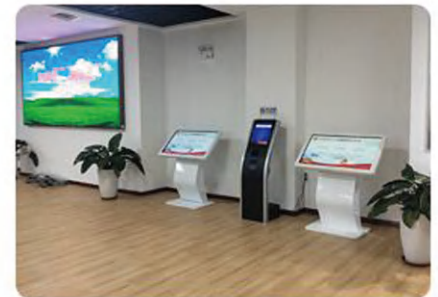




Product Features

1. The machine features an industrial-grade design with high reliability and stability. The device features a side-entry ELED backlight, delivering superior brightness uniformity and a more vivid, realistic color gamut.
2. The integrated aluminum plate heat sink provides a larger heat dissipation area, ensuring lower surface temperature on the casing and reliable long-term operation under heavy loads.
3. The entire unit features a robust sheet metal structure, integrated for enhanced security against theft and vandalism, with a perfectly matched profile frame. The front frame is crafted from aerospace-grade aluminum, featuring a sandblasting and brushed finish. Its ultra-thin quadrilateral design reaches a minimum thickness of just 25mm.

High transparency display tempered glass (3MM tempered + screen printing black edge 17.45MM), 100-ton stamping of hardware back panel to ensure the body is strong and the curved curve is fully displayed; all motherboards and electronic components are pre-assembled for streamlined production and maintenance; the package includes internal wiring, 1 AC socket, 1 boat-shaped switch, 1.5M power cable, and 1 Wi-Fi antenna; touch method: Infrared touch or capacitive touch is available.



01 Main function

- ◆ The original HD hard screen resolution can reach 1920*1080 with 178° wide angle, still clear from multiple angles; multi-touch, responsive touch, and support for multiple touch gestures.
- ◆ Customize query content and support custom software development; images can be zoomed in and out when browsing; user-friendly design, easy maintenance.
- ◆ Built-in WIFI signal reception is stable; supports Android and Windows systems; extremely long standby time, stable performance, and 7*24 hours of uninterrupted operation.
- ◆ The device powers on automatically, eliminating the need for cumbersome power cycling; multiple colors available, including silver, black, and white; customizable appearance and functions.

02 Screen size



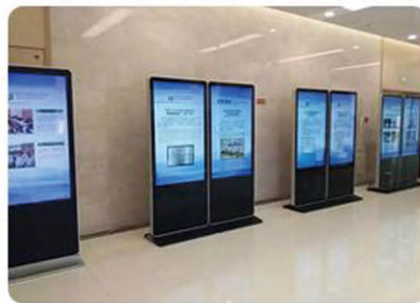
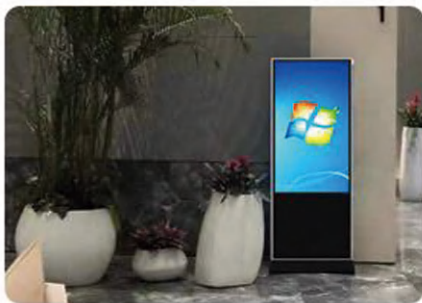
Vertical touch integrated machine



基本参数

Product Features

- 1.Ultra-thin and ultra-light design, easy to use and beautiful; high resolution, high contrast, high brightness, greatly improve the picture hierarchy, can better express the details.
- 2.The screen body of the touch all-in-one machine adopts an industrial-grade liquid crystal panel, a new A-grade panel ; the professional LCD screen is adopted, the video image is brighter and the stereoscopic sense is stronger.
3. 8bit-16.7M Color, the picture is more natural, and the delicate picture has no trailing at all; the service life is 50,000 -60,000 hours, with 7×24 hours of working time.
- 4.Touch mode: infrared touch and capacitive touch are optional.



01 Main function

- ◆ The original HD hard screen resolution can reach 1920*1080 with 178° wide angle, still clear from multiple angles; multi-touch, responsive touch, and support for multiple touch gestures.
- ◆ Customize query content and support custom software development; images can be zoomed in and out when browsing; split screen with smart playback for images and videos.
- ◆ Built-in WIFI signal reception is stable; customizable appearance and functions; supports Android and Windows systems.
- ◆ Extremely long standby time, stable performance, and 7*24 hours of uninterrupted operation; the device powers on and starts automatically, eliminating the hassle of manual power cycling; multiple colors available, including silver, black, and white.

02 Screen size



触控电子白板教学一体机



Smart Whiteboard



Teaching Software



Wireless Screen Mirroring



Lesson Plan Demonstration



Smart Annotation



OUR ADVANTAGES

The **Kezhuo** Touch-Body Machine features an imported high-definition LCD screen with exceptional resolution, wide viewing angles, and delivers crystal-clear, lifelike visuals with smooth, dynamic motion. This cutting-edge display delivers an immersive experience for users. It delivers a powerful visual impact. The display maintains perfect 1:1 ratio matching with high-definition entertainment content like movies and games, offering superior image quality and the most authentic visual reproduction. It incorporates cutting-edge technologies including active 3D technology, multi-touch technology, intelligent dynamic backlighting, and advanced exposure process techniques. Additionally, it boasts eco-friendly and energy-efficient features with user-centric design, achieving environmental protection goals through lead-free and mercury-free manufacturing. This provides users with a completely new experience that stands apart from traditional LCD screens.



Abundant Interfaces. Create More Possibilities

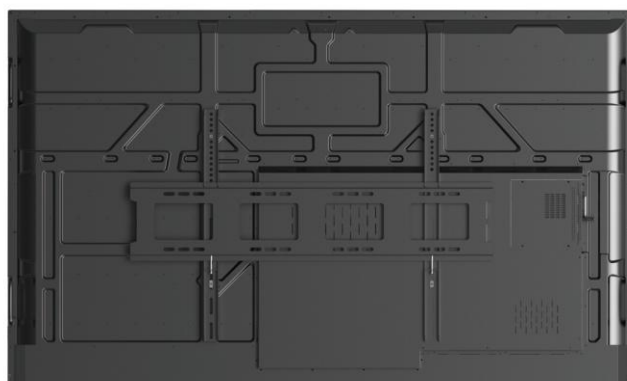
Comes with standard VGA input/output interfaces, HDMI input/output interfaces, 4 USB interfaces, as well as rich interfaces like audio and antenna. Easily connect devices such as USB flash drives, and quickly achieve efficient office work and interactive teaching.





Touch control electronic whiteboard teaching all-in-one machine

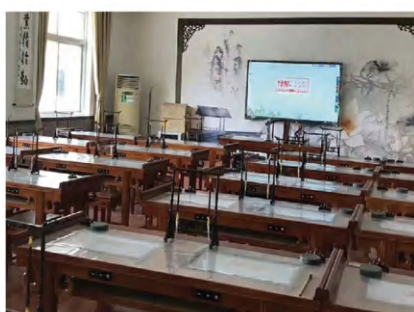
Teaching Touch-Body Machine-A Series DLED Backlight Direct-Down Type



Basic Parameter Setting

Size	55、65、70、75、85、86、98、100、110	Maximum power consumption rate	≤ 170W (excluding computer)
Backlight	DLED	Optimum resolution	3840*2160
View angle	178°	Lumina-nce	350cd/m ²
Response time	5ms	Contrast ratio	2000 :1
Screen life	≥ 100,000 hours	Display color	10bit,1.07B
Computer driven	Immunity from exemption	Response speed	≤5ms
Communication mode	USB	Loudspeaker	8Ω/10Wx2
Touch technology	Infrared Twenty-Point Touch Sensing Technology	Writing screen medium	3.2MM Zero-Cleavage Double-Sided AG Anti-Glare Glass with Mo's 7th Grade Explosion-Proof Rating
Writing style	You can write on opaque objects such as fingers and pens	Working voltage	100V-240VAC,50/60Hz

Product Case





Teaching touch all in one machine



智慧教育双系统解决方案

双系统交互、白板书写、全通道批注、设备安全锁、全方位智能化交互应用体验

教学系列

产品特点 Features

- 1、替代传统的电动幕布加投影机，实现一体化教学。
- 2、使用简单方便，抛弃复杂布线，电脑，电视，电子白板，投影，音响一体化设计。
- 3、3840*2160分辨率可达高清4K，显示效果更细腻，学生看起来更加舒服、护眼。

- 1, Replace the traditional electric curtain and projector to achieve integrated teaching.
- 2, The use of simple and convenient, abandon complex wiring, computer, TV, electronic whiteboard, projection, sound integration design.
- 3, The resolution can reach 3840*2160, the display effect is more delicate, and the students look more comfortable.

应用领域 Application area

- 1、各种学校，幼儿园，实验室，多媒体教室的教学应用。
- 2、各种银行、政府机关、电影院、接待室或会议室的信息发布及展览展示。

- 1, The teaching application of various schools, kindergartens, laboratories and multimedia classrooms.
- 2, Information release and exhibition of various banks, government agencies, cinemas, reception rooms or conference rooms.

十点触摸
Ten Point Touch

高清显示
HD Display

智能识别
Intelligent Recognition

多功能电源按键
Multifunction Power Button

一键节能
One Key Energy Saving

智能护眼
Intelligent Eye Protection

温度监控
Temperature Monitoring

主页四分屏
Preview Windows of Signal-Sources

功能多样化
Functional Diversification

操作便捷
Easy To Operate

维护方便
Easy maintenance

童锁密码设置
Child Lock Password Setting

Teaching touch all in one machine



wall-mounted installation



stand-mounted installation



Wireless screen mirroring function



Smart learning scenarios

01 Main function

- ◆ High-definition large screen with resolution up to 4K; multi-touch, supporting multiple people writing at the same time; scan to save and carry course materials with you.
- ◆ Double anti-glare screen, 4mm tempered glass with Mohs 7th grade hardness; ultra-narrow border design, scratch-resistant and wear-resistant screen for free writing and touching.

- ◆ Efficient smart whiteboard with touch writing and annotation; wireless screen mirroring for laptops, tablets, and phones; supports video conferencing for efficient meetings without business trips.
- ◆ Supports camera and microphone extension; rich interface integrating USB and computer interfaces; powerful dual system for free switching between Android and Windows.

02 Screen size

65" 75" 85" 86" 98" 100" 110"



Conference smart touch all-in-one

会议智能触摸一体机



Every Meeting Was Productive

EVERY MEETING IS MORE EFFICIENT

Easily realize functions such as writing, annotation, multi-directional interaction, and easy file transfer. Make meetings more seamless and work more efficient.

The touch all-in-one machine interconnects various data and international materials through the internet system, making meeting content more detailed and credible. It enhances the appeal and effect of meetings, helping meeting hosts and company leaders better achieve the meeting objectives.

Wireless screen mirroring enables wireless connection between the all-in-one machine, computers, laptops, tablets, and mobile phones in the same local area network via a wireless screen mirroring device. It displays the current operation content of the laptop on the all-in-one machine in real-time synchronization, including various types of multimedia information such as videos and audio.



会议案例

产品特点 Features

1. Integrates computer, projector, TV, electronic whiteboard, and advertising machine into one, easily adapting to various meeting scenarios such as phone and video conferences.
2. Large screen with high definition, high contrast, high saturation, and resolution up to 1080P and above, replacing traditional projection display, mainly used for meeting content display and information release.
3. Realizes synchronization between large and small screens and screen projection interaction; meeting speakers can use mobile phones, tablets, and laptops to touch and project to the all-in-one machine for mobile remote interactive explanation.

Wireless Screen Mirroring

Supports two-way operation; the touch screen can also control the computer.



Remote Meeting

Supports third-party remote meeting software. When paired with a camera and microphone, it transmits real-time meeting images with high stability and no delay. (The remote meeting system, camera, and microphone need to be purchased separately.)



Document Annotation

Click the "Comment" button to add comments on any interface and save screenshots



Mobile Phone Screen Mirroring



Laptop Screen Mirroring



Audio-Visual Integration · Smart Teaching

全贴合5.0电容触控黑板 开启智能教学新纪元

Fully integrated 5 nanometer touch smart blackboard opens a new era of Intelligent Teaching

液晶显示

集成系统

电容触控

多媒体教学

水笔书写

内置音箱

Product Features

1. The product seamlessly integrates traditional blackboards with intelligent HD interactive display technology, blending traditional teaching methods with modern tech to deliver an enhanced learning experience.
2. It features touch interaction, multimedia teaching, and chalkboard writing, with dual-system one-key switching and one-key power on/off.
3. The surface features full-lamination 5.0 technology capacitive anti-glare tempered glass, offering dustproof, waterproof, anti-explosion, and vision-protective properties.

01

Main function

- ◆ Strong visual impact and more interaction between teachers and students make teaching and learning no longer boring; this all-in-one device integrates nano blackboard, LCD touchscreen, multimedia speaker, computer, projector and other functions, enabling seamless switching between traditional blackboards and smart touchboards for interactive multimedia teaching.
- ◆ Teachers can flexibly utilize teaching tools and access high-quality educational resources to enhance teaching interactivity; supports time-activated on/off, on/off memory channel function, and multiple signal source selection.
- ◆ Supports wireless Wi-Fi and wired LAN, and can install APKs to browse web pages and play online videos; supports 4KUI for smoother display and 4K electronic whiteboard; the annotation feature can be accessed on any channel for practical and efficient use.
- ◆ Supports dual systems (seamless switching between Android and Windows) and touch operations on both Android 10 and PC devices; supports previewing channel images by clicking any signal source on the main page, and the channel can be set to four-way split screen display.

02

Screen size





Essential parameter

Size	70、75、86、100	Maximum power consumption rate	≤ 170W (excluding computer)
Backlight	DLED	Optimum resolution	3840*2160
View angle	178°	Lumina-nce	350cd/m ²
Response time	5ms	Contrast ratio	2000 : 1
Screen life	≤ 100,000 hours	Display color	10bit,1.07B
Computer driven	Immunity from exemption	Response speed	≤5ms
Communication mode	USB	Loud speaker	8Ω/10Wx2
Touch technology	Full-film 5.0 capacitive inductive touch technology	Writing screen medium	4 mm Physical Tempered Glass with Mo 7 Explosion Protection
Writing style	You can write on opaque objects such as fingers and pens	Working voltage	100V-240VAC50/60Hz

Product Case



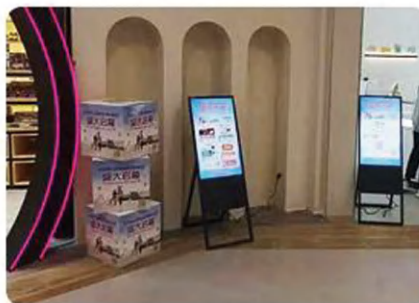


Electronic water brand advertising machine



Product Features

1. Featuring an ultra-thin and ultra-narrow design, it combines minimalist elegance with a sleek, contemporary look; single-molded construction ensures a lightweight yet robust build for exceptional durability and stability.
2. Smart de-noising technology prevents screen flicker, reduces harmful blue light exposure, and enhances viewing comfort; foldable and portable, with adjustable angle from 0° (vertical) to 45° (maximum spread) based on the environment.
3. High-performance Android motherboard with excellent heat dissipation, stable performance, and easy maintenance; extremely long lifespan with low power consumption, ultra-long stable operation, wide viewing angle, and high-brightness industrial-grade LCD screen.
4. Intelligent surround sound and high-definition decoding technology, supporting background music and playback formats such as AVI, MP4, MOV, and MP3; 8bit-16.7M Color, the picture is more natural with no trailing in delicate images.



01

Main function

- ◆ The original HD hard screen resolution can reach 1920*1080 with 178° wide-angle display, large screen and true color; built-in WIFI with stable signal reception, available in touch and non-touch versions.
- ◆ Intelligent split screen playback supports simultaneous playback of pictures, text, and video; supports Android and Windows systems; Multimedia Information Management System for intelligent information release.
- ◆ Remote publishing supports mobile phones, tablets, and computers to remotely publish pictures and videos; supports mobile phone screen projection, mobile phone management and program release.
- ◆ Time-sharing playback, smart timer for power on/off; insert a U disk to automatically copy its contents to the built-in storage and play; freely set LOGO, weather, time, and scrolling captions; extremely long life with 7*24 continuous operation up to 50,000-60,000 hours.

02

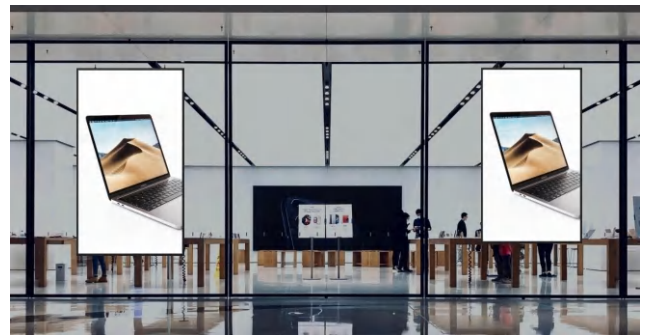
Screen size





Product Features

1. Unprecedented 3500nit brightness delivers groundbreaking image quality, showcasing your ads with eye-catching clarity that grabs passersby' attention. Ultra-thin design with compact, sleek and elegant aesthetics, suitable for any store style.
2. The semi-outdoor all-in-one series display features an ultra-narrow bezel of 12.5mm and an ultra-thin thickness of 54mm, making it brighter, thinner, and lighter than any traditional semi-outdoor display. It can be installed on walls or stands, or hung from the ceiling. Store owners can flexibly choose how to place the display to maximize space value and naturally integrate this modern "accessory" into the store.
3. Integrated signage solution: Each display is equipped with a remote control system. You can check the current health status of each display and easily control its brightness, temperature, and fan. All these operations can be controlled anytime, anywhere via PC and smartphone.
4. Boasting a 178° ultra-wide viewing angle, this display allows passersby to view ads from virtually any angle. Its all-weather durability is ensured by the semi-outdoor all-in-one design, featuring built-in heating for overheating prevention, automatic temperature control, and IP5X dust protection. The optional cloud-based ad distribution system further enhances content management, making it a true multifunctional all-in-one display.



01 Main function

- ◆ The original HD hard screen resolution can reach 3840*2160 with 178° wide-angle display, large screen and true-to-life colors; built-in WIFI signal reception is stable; smart split screen with multiple built-in templates for one-click application.
- ◆ Supports free switching between landscape and portrait modes; Multimedia Information Management System for intelligent information publishing; cloud management allows remote control of off-site advertising machines via mobile phones or computers, and supports phone screen mirroring and program management.
- ◆ Time-sharing playback, smart timer for power on/off; automatically detects USB drives and plays content when inserted; freely set LOGO, weather, time, and scrolling captions; supports multiple file formats, and images and videos can be played in a loop.

02 Screen size



Double-sided advertising machine



Product Features

1. Crafted with cold-rolled steel and baked paint, this product features a high-gloss white powder coating for an ultra-visual texture. The dual-screen device has screens on both sides for synchronized display, with different brightness levels that intelligently adapt to window display scenarios.
2. The ultra-slim design features a mere 21mm thickness, with a sleek and elegant appearance. Supports various installation methods including wall-mounted, ceiling-mounted, and floor-standing, adaptable to diverse scenarios.
3. Multiple screens can intelligently merge to display the same image, creating an ultra-wide screen. This enhances your artistic space. A high-performance Android motherboard with excellent heat dissipation, stable performance, and easy maintenance.
4. Extremely long lifespan: Low power consumption, ultra-long stable operation, featuring a wide viewing angle and high-brightness industrial-grade LCD screen. Intelligent surround sound, HD decoding technology, background music support, and AVI, MP4, MOV, MP3 video playback formats.



01 Main function

- ◆ Dual-screen synchronized or different display with resolution up to 1920*1080; 178° wide-angle display with large screen and true-to-life colors; built-in WIFI signal reception is stable.
- ◆ Supports mobile phone screen projection and program management; time-sharing playback, smart timer for power on/off; automatically detects USB drives and plays content when inserted; freely set LOGO, weather, time, and scrolling captions; supports multiple file formats, and images and videos can be played in a loop.
- ◆ Multimedia Information Management System for intelligent information release; smart split-screen playback supports simultaneous playback of images, text, and videos; supports installation and display in any orientation (landscape or portrait); cloud management allows remote control of off-site advertising machines via mobile phones or computers.

02 Screen size

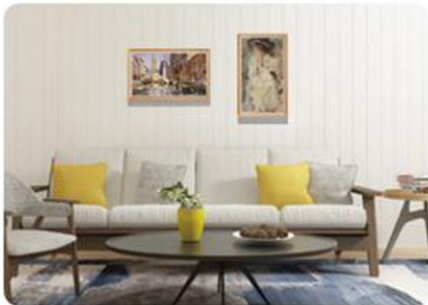


Picture frame advertising machine



Product Features

1. The frame is made of flame-retardant foam material, resistant to thermal expansion and contraction with almost no deformation, and the surface pattern is embossed; customizable with various patterns and colors; anti-glare screen with 178° HD visibility.
2. Available in colors such as black walnut, rosewood, and pine; equipped with anti-theft lock for information security; available in landscape and portrait styles, supporting timing on/off and moving target sensing.
3. Adopts professional LCD screen for brighter video images and stronger stereoscopic sense ; 8bit-16.7M color for more natural pictures with no trailing in delicate images; service life of 50,000 hours with 7*24-hour continuous operation.



01 Main function

- ◆ The original HD hard screen resolution can reach 1920*1080 with 178° wide-angle display, large screen and true-to-life colors; built-in WIFI with stable signal reception; smart split screen with multiple built-in templates for one-click application.
- ◆ Supports free switching between landscape and portrait modes; Multimedia Information Management System for intelligent information release; cloud management allows remote control of off-site advertising machines via mobile phones or computers, and supports mobile phone screen projection and program management.
- ◆ Time-sharing playback, smart timer for power on/off; automatically detects USB drives and plays content when inserted; freely set LOGO, weather, time, and scrolling captions; supports multiple file formats, and images and videos can be played in a loop.

02 Screen size



Outdoor Advertising Machine

FEATURES

- ▶ **1.Fashionable appearance:**
Professionally designed, elegant and stylish shell, customizable according to customer requirements.
- ▶ **2.High brightness:**
Visible clearly in sunlight all day with brightness of 5000nits.
- ▶ **3.Intelligent light control:**
Automatic screen brightness adjustment for distinct brightness, energy saving and comfort.
- ▶ **4.Time control:**
Supports 10 groups of time control with simple operation.
- ▶ **5.Intelligent temperature control:**
Intelligent temperature control system suitable for air conditioning and type I fan cooling systems to keep internal components working at appropriate temperatures.
- ▶ **6.Dustproof and waterproof:**
Fully sealed design to prevent dust and water from entering, IP65 rating.
- ▶ **7.High reliability:**
The player supports 10 times of forced power outage without damage through reliable hard disk self-test and repair mechanism.
- ▶ **8.Easy to use:**
No need for customized network maintenance personnel, supports boot and shutdown, remote control and upgrade for easy operation.
- ▶ **9. Screen size** 21.5" 32" 43" 50" 55" 65"

75" 85" 86" 98" 110"

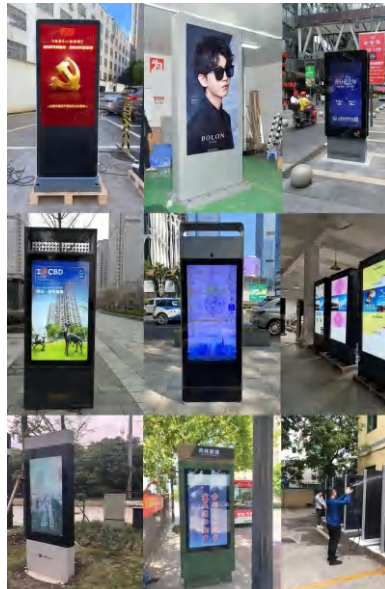


Dustproof, Waterproof, Lightningproof, Sunproof,
Corrosionproof, High Definition, High Brightness

Five Prevention Design: Waterproof and Dustproof

THREE PROOFING WATERPROOF AND DUSTPROOF

To address clients 'comprehensive needs, Ke Zhuo' s R&D team has developed an all-in-one outdoor advertising system. Their team comprises top-tier engineers specializing in product design, thermal management, electronic control, and optical control. Designed with industry-standard five-proof features, the unit maintains 24/7 operation across extreme temperatures (from -10 °C to 60°C) while offering waterproof, dustproof, and shockproof protection. Equipped with multi-level power control, signal indicators, overload protection, and ambient light monitoring, the system features a high-strength cold-rolled steel frame as its core component.



Waterproof



Electricity-
Proof



High
Temperature
Resistant



Low
Temperature
Resistant



Shockproof

Technical features and capabilities

1. The DID series units feature a slim 1cm border, with the 55-inch ultra-narrow model boasting a splicing gap of only 3.5mm, significantly enhancing the visual effect whether used as a standalone display or in a video wall system.



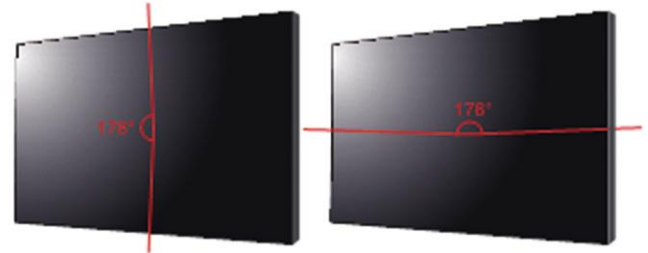
2. High-performance display splicing delivers 1080P HD resolution across the entire screen for a crystal-clear, perfectly realistic visual experience.



3. The professional 3D image processing chip employs 3D digital comb filters and dynamic noise reduction technology for clearer, more stable displays with vivid colors.



4. The all-new Super Panoramic View Extension (S-PVSA) technology ensures distortion-free and color-accurate imaging across a 178° field of view in all directions.



5. The industrial-grade DID LCD panel features high brightness, high contrast, and wide color gamut for vivid images with excellent color reproduction and enhanced depth, utilizing the latest color correction technology for crystal-clear and lifelike visuals.



6. The display can be controlled remotely by RS232, and the input and output control interface can easily realize the remote control and management.



LCD splicing screen

Features of the Splicing Controller

1. Supports full HD signals, and the processing chip uses advanced interlaced and motion interpolation algorithms; the pure hardware architecture of the video processing module enables real-time sampling, transmission and processing of HD video and high-resolution computer signals, avoiding image delay, trailing or drop to ensure the highest video quality and perfect picture quality of HD signals.



2. Professional image matrix processing switching module, based on hardware image parallel processing technology and high-speed digital information exchange system, realizes unified processing of multi-channel signals; the system can output stable images and shut down directly after hard start.



3. Rapid response and high-definition anti-interference: adopts parallel high-speed bus connection independent of the system bus for fast signal switching to the specified channel; uses LVDS differential transmission technology to improve the system's anti-interference capability and minimize the impact of external interference on signals.



4. Power-off state memory function: the system can automatically remember the working state of the device before shutdown in case of on-site power failure through pre-setting in the control software.



Features of the Splicing Control Software

1. Intelligent control software with a user-friendly interface; supports various WINDOWS applications without requiring database support or installation of database engines for convenient maintenance and easy operation.

2. Realizes real-time control of each display unit through RS232 communication interface with the splicing unit to adjust brightness, contrast and color temperature; adjusted parameters are automatically saved to ensure color consistency and uniform brightness across the entire spliced screen (without factory reset function).



3. Intelligent system for rapid recognition and processing of various signals with versatile image stitching and display capabilities; the large-screen system is operated by centralized control software for efficient selection, switching and configuration of video, VGA and YpbPr component signal sources, supporting precise adjustment of display parameters, flexible arrangement of window sizes and positions, and seamless implementation of full-screen display, customizable combinations, image stretching, and roaming overlay functions; all settings can be saved as display presets for instant reuse.



Touch coffee table



Product Features

1. Superior cost-performance ratio: a single unit can replace outdated coffee tables, dining tables, and peripheral multimedia entertainment systems, elevating the overall quality while reducing costs.
2. Multi-touch and multi-user operation: proprietary optical interaction sensing imaging technology enables true multi-touch without ghost points.
3. Customizable configuration: exterior with various styles, sizes, and materials tailored to needs; main unit can be flexibly configured for the most cost-effective solution.
4. Widely used in homes, KTVs, bars, restaurants, real estate, wedding photography, telecommunications, banks, tourism, exhibition halls, science museums, and museums.
5. Flat surface (glass display without 1-2cm raised bezels of infrared multi-touch screens); waterproof, scratch-resistant, and impact-resistant, meeting all performance requirements of traditional coffee tables.
6. High sensitivity: touch refresh rate reaches 60fps for a seamless and lag-free experience; HD image with high-resolution, ultra-short-throw, high-brightness projector and unique anti-glare design for operation in sunlight and under spotlights.



01 Main function

- ◆ 1. The original HD hard screen resolution can reach 1920*1080 with 178° large viewing angle, clear from multiple angles; multi-touch allows multiple users to interact simultaneously with responsive and lag-free performance.
- ◆ 2. Two-in-one for work and leisure; flat surface without grooves for easy cleaning; placing items or water droplets on the desktop will not affect operation sensitivity.
- ◆ 3. Supports basic office software such as WORD, PPT and EXCEL; IPS hard screen with 4mm thick tempered glass protection for scratch and impact resistance.
- ◆ 4. Customizable touch query system for self-service business processing and various industry queries; rich interfaces for free customization; built-in WIFI with stable signal reception; built-in speaker with rich sound quality.

0 screen size



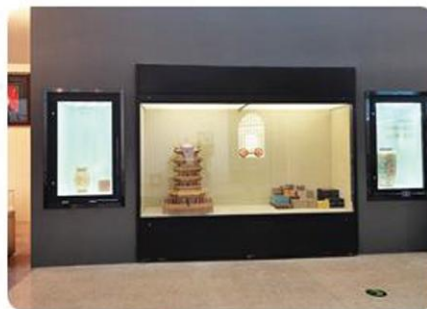


Transparent screen display cabinet



Product Features

1. Highly transparent liquid crystal display: built-in objects are visible through the displayed image, showcasing items in their original form while preventing accidental damage.
2. Unlimited viewing angles: advanced liquid crystal molecular plane switching technology enables 80° omnidirectional viewing from all directions.
3. Touchless Touch: innovative high-tech hard screen eliminates water ripple effects during touch for crystal-clear, stable visuals and fluid, natural imaging; cutting-edge technology with exceptional transparency and customizable configurations.
4. Sleek, minimalist design integrating a color transparent display for real-time product presentations, information sharing, and instant customer feedback interaction; ultra-thin and lightweight with fewer components for a more compact and user-friendly design than conventional LCDs.
5. Energy-efficient with reduced backlight components, consuming only about 10% of power compared to standard LCDs for overall energy efficiency and portability.



01

Main function

- ◆ 1. The original HD hard screen resolution can reach 1920*1080 with 178° wide viewing angle, clear from multiple angles; window-style transparent screen for a more advanced and high-end experience; built-in Android/PC system and industrial control motherboard.
- ◆ 2. Multi-touch with responsive and convenient operation; built-in WIFI with stable signal reception; 3D stereoscopic effects without 3D glasses for various special effects; energy-efficient and environmentally friendly with lower power consumption than traditional LCD screens and eye protection.
- ◆ 3. Professional picture software with drag-and-drop combination, zooming, and hand-drawn graffiti; interactive projection system for audience to interact with pictures through touch operations; double shackles design for beauty and safety; multiple interfaces to meet various needs.

02

Screen size





Product Features

1. Strong integrity: the combination of real entity model and hidden computer control system makes the virtual book flip a movable and integrated display model.
2. High sense of science and technology: infrared, camera, host and other equipment can be hidden without leakage to arouse visitors' interest.
3. High flexibility: book content can be customized according to actual needs, with films and pictures hidden in the book, and content can be replaced, added or deleted at any time for higher flexibility.
4. High intelligence: the control system is integrated by computer, and the opening and closing software can be intelligently designed for convenient maintenance and management.
5. The whole machine adopts integrated LED backlight with direct-down light for fine and realistic pictures; the integrated backplane has large heat dissipation area and space with low shell surface temperature; the whole machine is made of metal structure, solid and integrated, safe, anti-theft and anti-destroy.



01

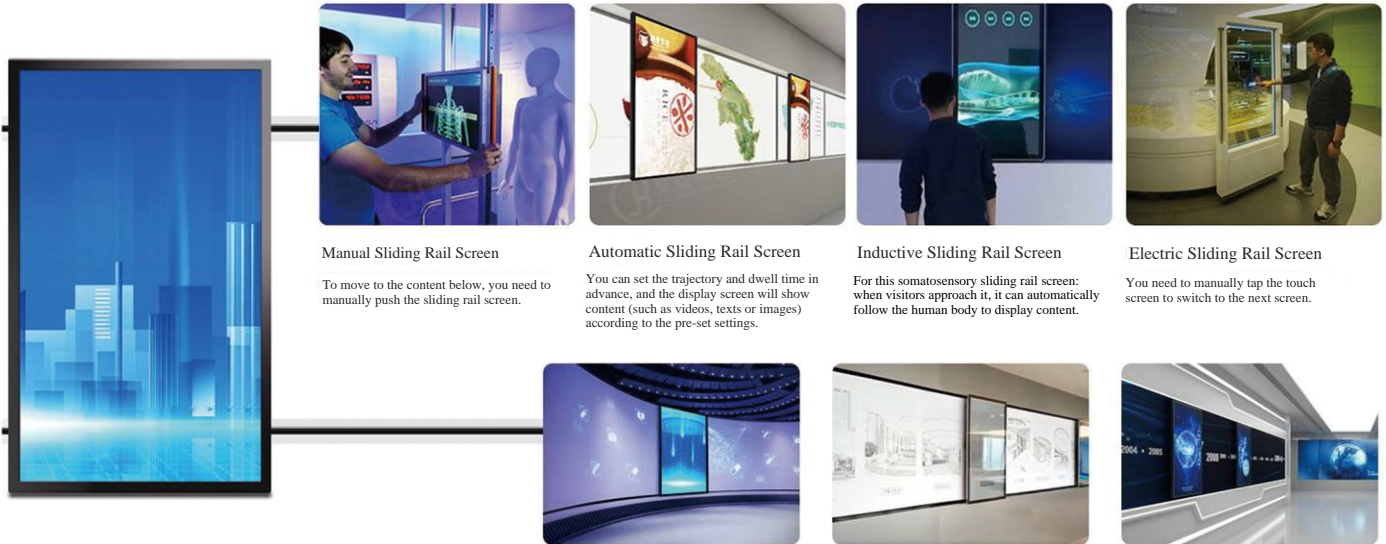
Main Function

02

Screen Size



- ◆ 1. The original HD hard screen resolution can reach 1920*1080 with 178° wide-angle view, clear images from multiple angles; built-in WIFI for stable signal reception; multi-touch and gesture recognition.
- ◆ 2. Touch Query System integrating interactive queries, exhibition displays, and gaming features ; Smart Electronic System for custom-designed corporate brochures; professional image editing software with drag-and-drop, zoom, and freehand drawing features; supports 3D tour images and 360-degree panoramic views.
- ◆ 3. Multiplayer competitive interaction on the same screen; imported car paint job with sheet metal main body; lock and chain design for beauty and safety; multiple interfaces to meet various needs.



Manual Sliding Rail Screen

To move to the content below, you need to manually push the sliding rail screen.

Automatic Sliding Rail Screen

You can set the trajectory and dwell time in advance, and the display screen will show content (such as videos, texts or images) according to the pre-set settings.

Inductive Sliding Rail Screen

For this somatosensory sliding rail screen: when visitors approach it, it can automatically follow the human body to display content.

Electric Sliding Rail Screen

You need to manually tap the touch screen to switch to the next screen.

Product presentation

Product introduction

Interactive slide screen, also known as slide rail electronic window, is a combination of customized sliding tracks and interactive windows; when the screen moves to a predetermined position, it automatically plays the corresponding content and interacts with the audience.

1. Integrates images, texts, and videos to present information-rich but dry content through visual videos, automating exhibition information dissemination and product introductions.
2. Saves space and enhances aesthetics as it is typically wall-mounted; interactive and fun with combined image and text display for a more direct effect to attract visitors and achieve better publicity.
3. Provides more detailed narration, freeing clients from the constraints of salespeople's explanations; presents content more concretely, comprehensively, and impactfully to leave a lasting impression.

Types

1. Manual slide screen: move the screen manually to explain the following content.
2. Automatic slide screen: pre-set track and stop time to display videos, texts, pictures and other content according to settings.
3. Electric slide screen: click the touch screen manually to enter the next screen.
4. Inductive slide screen: automatically follows visitors when they approach for display.

02

Screen size





Party building advertising machine



01

Main function

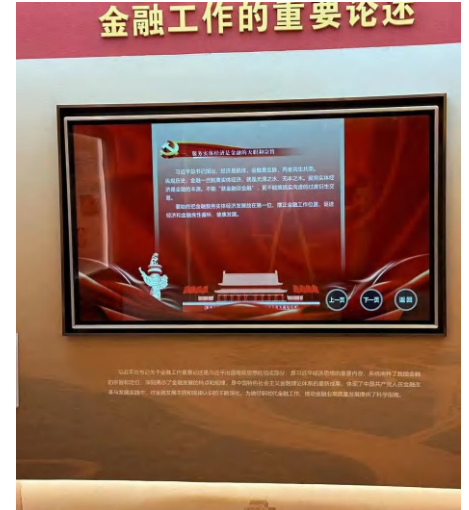
- ◆ 1. Cloud management allows remote control of off-site advertising machines via mobile phones and computers; supports mobile phone screen projection and program management.
- ◆ 2. Time-sharing playback, smart timer for power on/off; automatically detects USB drives and plays content when inserted; freely set LOGO, weather, time, and scrolling captions.
- ◆ 3. Supports customization (color, style, function, etc.); multiple modes with smart split-screen for flexible combinations; quick and secure installation with a simple structure.
- ◆ 4. High refresh rate with no flickering during switching; environmentally friendly and energy-efficient with superior heat dissipation and high performance; LED bulb lifespan up to 100,000 hours; excellent heat dissipation with quiet and noise-free operation; supports customization to meet diverse needs.

02

Screen size



Party building touch all-in-one machine



01

Main Function

02

Screen Size

- ◆ 1. The original HD hard screen resolution can reach 1920*1080 with 178° wide viewing angle, clear from multiple angles; multi-touch, responsive touch, and support for multiple touch gestures.
- ◆ 2. Customize query content and support custom software development; zoom in and out by flipping the image; split screen with smart playback for images and videos.
- ◆ 3. Built-in WIFI with stable signal reception; the device powers on automatically, eliminating the hassle of manual power cycling; multiple colors available, including silver, black, and white; customizable appearance, functions, and colors.
- ◆ 4. Supports both Android and Windows systems; extremely long standby time, stable performance, and 24/7 uninterrupted operation.



Other cabinet customization



Product Features

1. All cabinets are constructed with premium cold-rolled steel plates, featuring a luxurious five-layer automotive-grade metal paint finish; customizable colors for diverse aesthetic preferences (modern, minimalist, personalized); the body incorporates rust-proof, anti-magnetic, and anti-static features.
2. The cabinet features a three-dimensional speaker system, a built-in magnetic speaker, standard network ports, USB ports, and a power supply panel.
3. Display section: brand-new industrial-grade LCD screen; touch interface: capacitive touch or high-precision infrared touch optional.
4. Customizable peripheral functions including printers, card readers, coin dispensers, scanners, fingerprint scanners, cameras, metal password keypads, and 64bit metal explosion-proof keyboards; ideal for corporate and institutional lobbies, hotel and restaurant lobbies, and public/commercial spaces requiring information display and interactive queries.
5. User-friendly design with easy maintenance; motherboard supports WINDOWS or Android systems with low power consumption, efficient heat dissipation, and stable performance.



01 Main function

- ◆ 1. HD display with 178° wide viewing angle, clear from multiple angles; built-in WIFI with stable signal reception; touch query system integrating text introduction, picture display, url link and other functions; accurate touch with instant response using original infrared/capacitive touch screen.
- ◆ 2. Customizable shape, color, and function based on customer requirements; extend with various functional accessories to meet different application requirements; custom software with independently developed and customized application software for high practicality.
- ◆ 3. Ergonomically designed, stylish and attractive; various independent designs for easy loading/unloading and maintenance; stable performance with dustproof, anti-glare, and anti-interference features; optional Android/windows system for installing any software; plug and play with no on-site installation and commissioning.

02 Screen size



Self-service terminal



Product Features

1. All cabinets are constructed with premium cold-rolled steel plates, featuring a luxurious five-layer automotive-grade metal paint finish; customizable colors for versatile, modern, minimalist, and ergonomic designs; the body incorporates rust-proof, anti-magnetic, and anti-static features.
2. The cabinet features a three-dimensional speaker system, a built-in magnetic speaker, standard network ports, USB ports, and a power supply panel.
3. Display section: brand-new industrial-grade LCD screen; touch interface: capacitive touch or high-precision infrared touch optional.
4. Customizable peripheral functions including printers, card readers, coin dispensers, scanners, fingerprint scanners, cameras, metal password keypads, and 64-bit metal explosion-proof keyboards; ideal for corporate and institutional lobbies, hotel and restaurant lobbies, and public/commercial spaces requiring information display and interactive queries.
5. User-friendly design with easy maintenance; motherboard supports WINDOWS or Android systems with low power consumption, efficient heat dissipation, and stable performance.



01 Main Function

- ◆ 1. Ergonomically designed, stylish and attractive; optional Android/Windows system for installing any software; plug and play with no on-site installation and commissioning.
- ◆ 2. HD display with 178° wide viewing angle, clear from multiple angles; built-in WIFI with stable signal reception; touch query system integrating text introduction, picture display, url link and other functions; accurate touch with instant response using original infrared/capacitive touch screen.
- ◆ 3. Customizable shape, color, and function based on customer requirements; extend with various functional accessories to meet different application requirements; multiple independent designs for easy loading/unloading and maintenance; stable performance with dustproof, anti-glare, and anti-interference features; custom software with independently developed and customized application software for high practicality.

02 Screen Size



排队叫号机 Queue management machine

自助式服务 省心省事



The Kezhuo wireless queue terminal, designed with a "24/7 self-service" concept, effectively addresses overcrowding in traditional service centers. It compensates for time constraints by eliminating physical visits, delivering a hassle-free experience with convenient, considerate services. In the financial sector, users can perform account inquiries, self-service transfers, statement printing, supplementary registrations, and loss reporting. For telecommunications, customers can activate or deactivate mobile services, check and print phone bills, print invoices, enable caller ID, and manage GPRS subscriptions through simple phone number inputs on the terminal.



Simple setup, powerful features

SIMPLE SETTINGS POWERFUL

<p>Caller</p>	<p>Medical Staff Evaluator</p>	<p>Integrated Smart Display</p>
<p>Window Display Screen</p>	<p>Ticket Machine</p>	<p>LED screen</p>



Completely wireless

SOPHISTICATED ATMOSPHERIC STYLING

KEDRO Wireless Queuing Systems are widely adopted as service terminals across multiple industries. These innovative devices address the chronic issue of overcrowded service halls where customers endure long queues and chaotic waiting environments. By eliminating physical queues, the systems significantly improve service quality, enhance brand image, and create a user-friendly service ecosystem. They effectively resolve common customer frustrations such as waiting delays, congestion, and disorderly situations, ultimately delivering a comfortable, fair, and welcoming experience. The implementation of these wireless queuing terminals in major service centers represents a groundbreaking management solution that redefines operational efficiency.

Widely applicable



Queuing machine window screen series



四字窗口屏

五字窗口屏

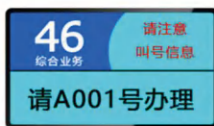
八字窗口屏



四行八字综合屏



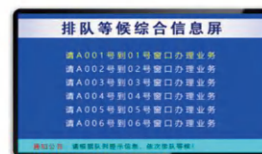
单双色Led通长屏



液晶窗口屏



全彩Led通长屏



液晶综合屏



液晶综合屏



单双色Led通长屏案例



嵌入式Led窗口屏案例



全彩Led通长屏案例



壁挂液晶窗口屏案例



吊挂Led窗口屏案例



吊挂液晶窗口屏案例

LED window screen function

01 Main Function

- ◆ 1. Wireless transmission, plug-and-play
- ◆ 2. Customizable in various sizes: single red, dual-color, or full-color
- ◆ 3. Display screens meet different installation needs: ceiling-mounted, wall-mounted, or embedded
- ◆ 4. Clear display, smooth playback, sleek and lightweight design
- ◆ 5. Can display numbers, time, date, day of the week, etc.
- ◆ 6. Healthy green light source: LED lighting, flicker-free, non-glaring, soft light

Liquid crystal window screen function

- ◆ 1. Free editing of data display formats, customizable interface design
- ◆ 2. Real-time viewing, one-click updates, automatic connection
- ◆ 3. Android system, stable, secure, and easy to use
- ◆ 4. Original high-definition hard screen with resolution up to 1920*1080
- ◆ 5. 178° wide viewing angle, clear visibility from multiple angles
- ◆ 6. Can display unit name, window number, department, business type, etc.

02

Screen Size

LED window: four characters, five characters, eight characters, double-line eight characters, twelve characters

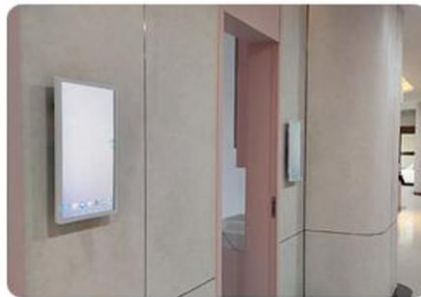


Electronic door plate series



Product Features

1. All-steel mold manufacturing with surface metal paint and electroplated internal components for light weight, sturdiness, durability, and minimal deformation.
2. New type of high-brightness display screen with high light transmittance, real color restoration, and clear visibility from multiple angles; tempered glass with wear-resistant, waterproof, dustproof, explosion-proof, and scratch-proof properties, and high light transmittance for normal use under strong light (sunlight, incandescent lamp, fluorescent lamp).
3. Improves patients' medical experience and promotes the informatization and digital management of hospital work; customizable configuration with strong compatibility, efficient and stable performance, and low energy consumption for a smooth user experience.
4. Supports landscape and portrait modes with flexible image combinations and multi-angle displays, ideal for hospitals and private clinics; smart consultation room screen displaying real-time queue status (doctor's photo, professional title, resume, queue status, waiting status); compatible with both Windows and Android systems.



01

Main Function

- ◆ 1. The original HD hard screen resolution can reach 1920*1080 with 178° wide-angle display, large screen and true-to-life colors; built-in WIFI with stable signal reception; smart split-screen playback supports simultaneous playback of images, text, and videos; supports free switching between landscape and portrait modes.
- ◆ 2. Multimedia Information Management System for intelligent information release; remote publishing supports mobile phones, tablets, and computers to remotely publish pictures and videos, and also allows screen mirroring and program management from mobile devices.
- ◆ 3. Time-sharing playback, smart timer for power on/off; insert a U disk to automatically copy its contents to the built-in storage and play; freely set LOGO, weather, time, and scrolling captions; extremely long lifespan with 7×24-hour continuous operation up to 50,000– 60,000 hours.

02

Screen Size

19" 21.5" 32" 43"



THE PRODUCT

Outpatient Triage Queuing System

Applied to various outpatient departments of hospitals, it can effectively solve problems such as disorderly queuing, unbalanced workload of doctors, and noisy medical environment; features first-level and second-level triage queuing modes to make patients aware of their queuing status and avoid irritability caused by congestion.





 THE PRODUCT

Pharmacy Queue Calling System

The system is used at the medicine pickup windows of hospital pharmacies, including both Chinese pharmacy and Western pharmacy. It automatically retrieves patient information. Once the dispensing pharmacist completes preparation, they can initiate the call by clicking a button or scanning the barcode on the prescription slip. The system then automatically calls the number and displays the calling information on the window's display screen, with batch calling functionality available.





THE PRODUCT

Laboratory Queuing System

This system is primarily used at hospital blood collection windows. Through seamless integration with the Hospital Information System (HIS) or Laboratory Information System (LIS), it retrieves patients' basic information. After a patient checks in, they are automatically entered into the blood draw queue. The blood collection window then calls patients in the order of their check-in, with the window screen providing voice prompts and displaying patient information.





Hospital self-service report kiosk

Self-reporting printer



View Personal Report

Printable Personal Report

Self-Service Report Display LCD All-in-One Machine

Scroll Display Information of Personnel with Available Reports



Automatic Update



 THE PRODUCT

Smart Ward System

It integrates functions including the medical staff intercom system, ICU visiting system, inpatient information sheet, electronic bedhead card, and more.





Guide inspection experience queue call system

Ward Area Information Board



Patient Information Overview



Display Work Log
Display Ward Announcement Information

Corridor Display



Call Information Display
Nursing / Backup Assistance Alerts

Voice Broadcast / Ringtone

Door machine at the entrance of the ward

Call Intercom

Medical Staff Information Display



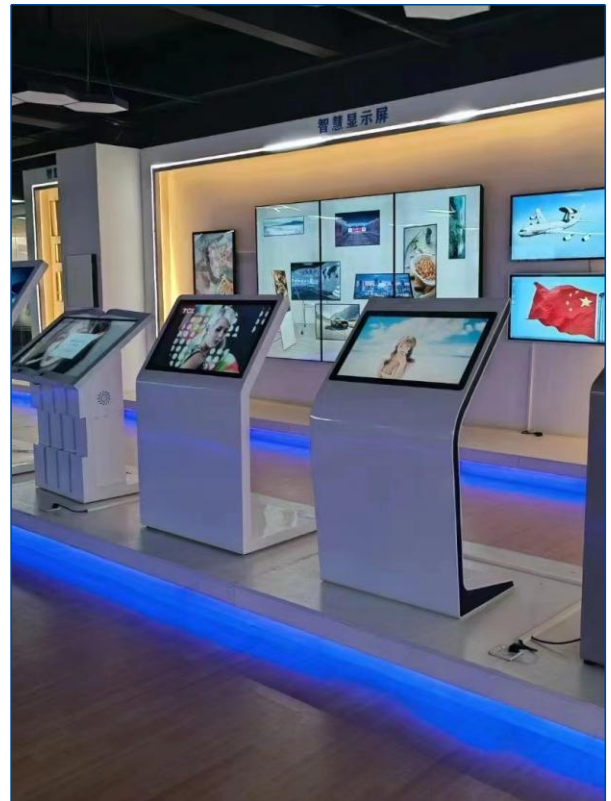
IC Access Control

Bed Extension



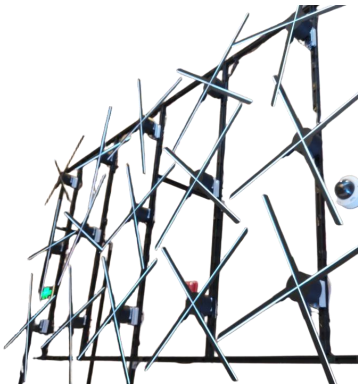
Call Intercom; Fee Inquiry; Nursing and Support Request

Patient Information Display; Medical Order Information Display; Extended Intelligent Infusion





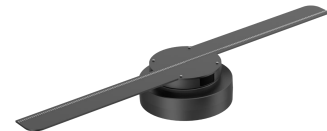
Classification of Holographic Digital Humans



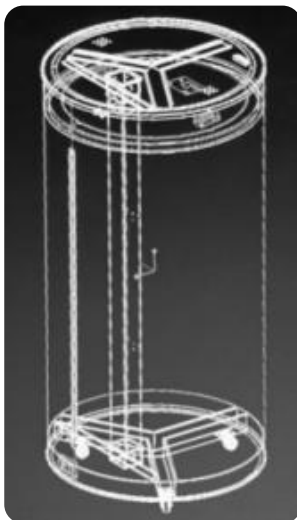
Holographic Fan Digital Human

1. Technical Principle: An innovative device combining rotating fan and holographic projection technology. Holographic images are projected onto rotating fan blades to create realistic 3D effects, forming continuous pictures through the human eye's persistence of vision effect (POV principle) during high-speed rotation.

2. Technical Features: Integrates LED fan and luminous lamp beads for clear and realistic holographic images—frameless and background-free, making it easier to create a floating object effect.



Functional applications with visual impact to convey diverse messages.



Holographic Liquid Crystal Digital Human

In today's world where technology intersects with art, AI holographic digital humans are reshaping interaction paradigms across industries like commerce, education, and cultural tourism in a transformative way. They are not merely virtual avatars, but "super employees" that combine intelligent guidance, emotional companionship, and data-enabled empowerment—driving cost reduction and efficiency improvement for enterprises, while creating immersive and unique experiences for users.

Holographic display devices, with their unique naked-eye 3D effects and augmented reality (AR) overlay capabilities, transcend the constraints of traditional screens to deliver striking visual effects that extend beyond 3D space. They can showcase a variety of digital media content, including but not limited to 3D presentations of digital humans and products.

Leveraging the foundational capabilities of holographic AI technology, standardized hardware is paired with customized software to provide scenario-specific data services.

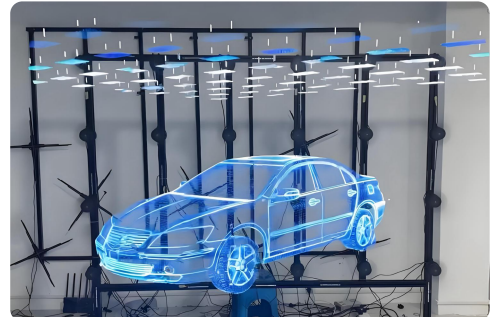


Holographic fan digital human



Product Features

1. Precision lamp array: Over 1000 LED beads per meter, supporting 16.7 million color display.
2. Intelligent control system FPGA chip achieves millisecond-level synchronous refresh.
3. Safety structure: Aviation aluminum frame with IP68 protection rating.
4. Fully transparent cylindrical chassis, elegant and high-end; with universal wheels at the base for easy movement.
5. Diameter of 3D holographic fan AI digital human outer box: 845mm; height: 1710mm (including wheel height).
6. Equipped with colorful ambient lights for a cool and attractive appearance.15W low-frequency Bluetooth speaker with rich and powerful sound.
7. Reasonable design for easy assembly and disassembly.



01 Main Function

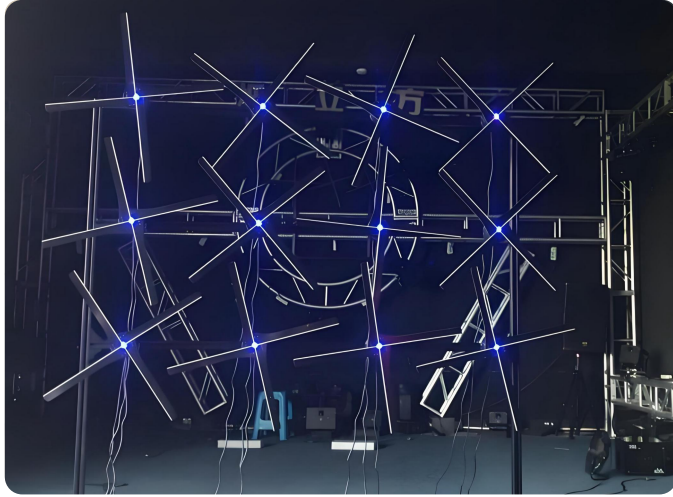
- ◆ Customize company 3D motion images.
- ◆ Voice command function: AI digital human switches different actions according to call commands.
- ◆ Customizable voice command words and wake-up words to adapt to various questioning methods.
- ◆ Wireless microphone pickup, unaffected by environmental noise and distance.
- ◆ Naked-eye 3D holographic imaging with striking stereoscopic effects.
- ◆ Support uploading and replacing materials via computer applications and controlling online playback.
- ◆ High-speed rotating LED light strip creates floating 3D images in the air.

02 Screen Size





Holographic Fan Digital Human



Basic PARAMETER SETTING

Display Area(CM)	Diameters: 15/18/30/42/46/65/78/100/150/180cm
Contrast Ratio	420*42,1600*224,640*640,900*900, etc.
Number of Lamp Brightness	224 - 3 0 6 6
Rated Power	10-400W
Power Input Voltage	100-240V/AC50/60Hz99
Broadcast Control Mode	Android/iOS/Windows, cloud apps, memory card, computer HDMI
Memory Card	8G, 16G, 32G
Software support system	Mobile App/Computer



Product Case



Backpack-style



Colorful circular protective cover



Desktop stand and desktop cover



Floor-standing CD rack



Floor tripod



Lifting stand



Floor-standing sheet metal display cabinet



Aluminum alloy square protective cover



Aluminum alloy protective cover with stand



Circular acrylic protective cover



Circular acrylic protective cover



Aluminum alloy protective cover with stand



03

Application Fields

- ◆ 1. Reduces enterprise costs and improves efficiency, provides users with immersive experiences, and promotes the innovation of interaction paradigms in multiple fields.
- ◆ 2. Mainly used in advertising media and exhibition fields, supporting the playback of 2D and 3D videos. Built-in WIFI module for network connection, featuring realistic 3D video playback, long service life, low energy consumption, easy installation and use, high practical value, and wide applicability.
- ◆ 3. Integrates speech synthesis, motion capture and other technologies to achieve multi-modal synchronous feedback of expressions, actions and voices.
- ◆ 4. Answers tourists' questions in real time and generates personalized tour routes in cultural and tourism scenarios.
- ◆ 5. Widely installed in indoor and semi-outdoor venues such as shopping malls, cinemas, hotels, restaurants, exhibition halls, specialty stores, subways and airports.
- ◆ 6. Suitable for displaying individual items with rich details or internal structures (e.g., luxury watches, famous cars, jewelry, industrial products) as well as characters and cartoons, giving the audience a fully three-dimensional feeling.



Holographic Digital Human (liquid crystal type)



Product Features

1. Uses transparent LCD or OLED screen; flexible size, supports customized production and tailored film screen shapes.
2. Naked-eye 3D stereoscopic effect, no need to wear any 3D glasses or auxiliary equipment.
3. Certain transparency, can be combined with transparent screen technology to achieve seamless superimposition of virtual information and the real world.
4. High brightness and wide viewing angle, with bright and vivid image quality.
Can integrate interactive sensors such as touch modules, somatosensory recognition cameras or millimeter-wave radar.
5. Highly technological and futuristic, instantly attracting attention; a powerful tool for brand promotion, product display and customer acquisition.
6. Generates realistic floating 3D visual effects using the principles of light interference and diffraction.
7. Displays depth and stereoscopic images on ordinary LCD screens without 3D glasses through special optical films, lens screens or lenticular lens technology.



01 Main Function

- ◆ 3D advertising: Plays three-dimensional product advertisements and brand stories.
- ◆ 3D product display: Replaces traditional physical sample cabinets; performs 3D digital modeling of complex products, and conducts dynamic and interactive disassembly and demonstration through holographic LCD screens.
- ◆ Interactive experience and entertainment: Virtual try-on, taking photos with virtual IP images, etc.
- ◆ Stage and event scenes: Serves as stage background or special effect equipment to realize virtual idol's real-stage appearance and scene switching, creating a shocking on-site visual effect.

02 Screen Size

21.5" 32" 37" 43" 55" 65" 75" 85" 98"



Holographic digital human (liquid crystal type)

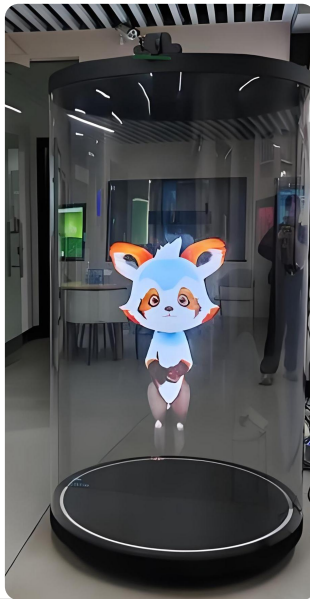


Basic PARAMETER SETTING

Light Emitting Point Color	1R1G18
Transmittance	70%-98%
Refresh rate (HZ)	≥3840
Rated Power	10-400W
Service voltage (V)	5
Drive mode	Static
Maximum View	160°
Operating Temperature	-22°C-55°C
Protection Rating	IP43



PRODUCT CASE



03

Application Fields

- ◆ 1. Shopping malls, brand flagship stores and automobile 4S stores: Used to display 3D product models (e.g., cars, mobile phones, jewelry, cosmetics). Customers can view product details 360 degrees, and even perform virtual disassembly and color changing.
- ◆ 2. Replaces traditional flat posters; dynamic and three-dimensional advertising content greatly enhances the attractiveness of shop windows.
- ◆ 3. Displays event-themed IP or mascots to create a strong visual impact and event atmosphere.
- ◆ 4. Integrates AIGC and large language models: Digital humans will have emotion recognition and creative generation capabilities, such as customizing exclusive stories or poems for users.
- ◆ 5. Displays enterprise history, core technologies, product matrix or future vision to enhance corporate image and sense of strength.
- ◆ 6. Promotes holographic interaction of digital humans as an entrance to the metaverse; 75-inch holographic cabin, as a virtual-real integration terminal, supports virtual meetings, remote collaboration, digital collection display and other scenarios.
- ◆ 7. Biological, chemical, physical and other fields: Used to visualize complex scientific models such as molecular structures, celestial motion and fluid mechanics.
- ◆ 8. Supports personalized customization of hardware equipment and digital human software; integrates touch or gesture recognition technology to realize interaction with stereoscopic images, providing a novel information query experience.



Holographic Transparent Cabinet



Product Features

1. High transparency: When the screen is not displayed, it is like ordinary glass, and the physical objects inside the cabinet are clearly visible.
 2. Adopts high-tech screens such as OLED or transparent LCD, with cutting-edge display technology.
 3. Realizes floating 3D display on transparent media; the display screen is integrated with the display cabinet glass, no need to occupy additional space for the display screen.
 4. Uses high-density LED beads and FPGA chip control system.
 5. Full metal structure of the whole machine, anti-radiation, anti-magnetic field and anti-high-voltage interference.
 6. Adopts nano-capacitive touch for more convenient and perfect operation.
- Industrial-grade design with high reliability and stability.



01 Main Function

- ◆ 1. Plays high-definition videos, scrolling graphics and texts, animations, etc., on the transparent screen, more attractive than traditional static signs.
- ◆ 2. Precisely superimposes virtual models, character videos generated by keying technology, product special effects, data charts, etc., on physical exhibits to realize "virtual-real combination" narrative display.
- ◆ 3. Flexibly controls playback content and scheduling through professional playback systems and management software; realizes remote update and management of content.
- ◆ 4. Serves as an independent display cabinet with wide scene adaptability and strong function expandability.
- ◆ 5. Updates data content anytime and anywhere as required; maintains the timeliness and freshness of display content through systematic operations by professional production teams to meet market demands.

02 Screen Size



Holographic Transparent Cabinet



Basic PARAMETER SETTING

Response time	8ms
Contrast Ratio	1200: 1
Brightness	Adjustable to 150-400 cd/m2
Power Supply	AC100-240V 50/60Hz
Power (W) Consumption	99、145、 220
Input Interface	DC*1, MIC*1, LAN Ethernet interface x1
Temperature environment	0-40°C Temperature 10%-80%
Packaging Accessories	Remote control, power cord, installation guide, and certificate of conformity



Holographic Transparent Cabinet

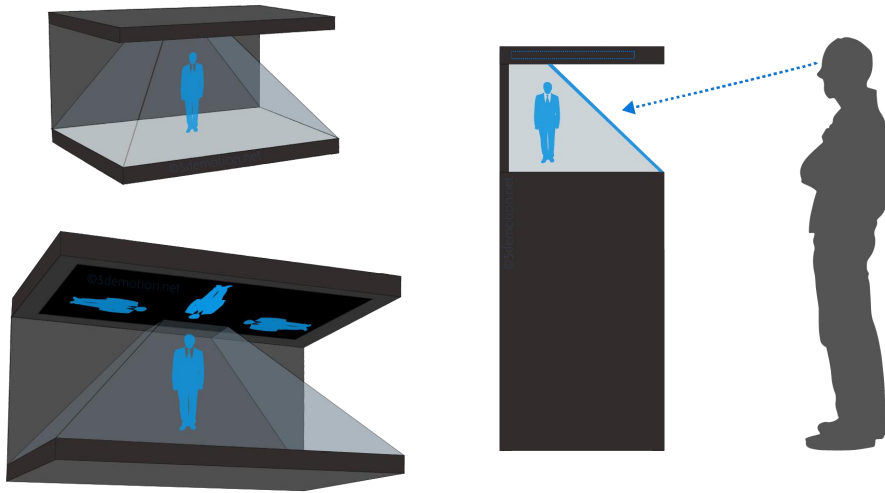
Product Case



- ◆ 1. Images seem to float in the cabinet, directly viewable without any equipment, realizing the intersection of light and shadow with reality.
- ◆ 2. See internal items through the playing screen; the combination of dynamic product advertising information with static physical objects such as terminal products and shop windows enhances customers' brand experience and shopping experience.
- ◆ 3. Multiple "holographic transparent cabinets" can be arbitrarily spliced to form a larger display wall, suitable for large exhibition halls or stage backgrounds.
- ◆ 4. Makes cultural relics "come alive"; digital display greatly reduces the frequency of cultural relic transportation, reducing the risk of cultural relic damage, and ensuring the preservation and display of cultural relics in an absolutely closed environment.
- ◆ 5. Displays high-end commodities such as jewelry, luxury watches and digital products, effectively attracting consumers' attention and increasing sales volume. Displays enterprise products and honors to achieve brand promotion and enhance corporate image and brand value.
- ◆ 6. Used for model display, cultural relic and history display in teaching, providing vivid and intuitive teaching experience.
- ◆ 7. Hospitals use transparent cabinets for 3D display of medical devices and surgical models to help medical staff better understand and apply them.

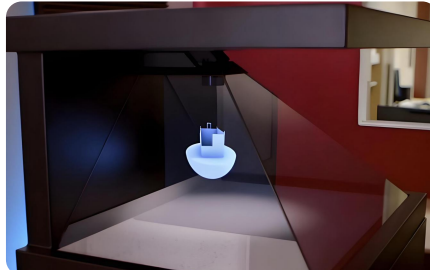
03

Application Fields



Product Features

1. High transparency when power is off, like ordinary glass, without affecting the display of physical objects inside the cabinet.
2. When powered on, dynamic digital content floats directly on the glass, forming a wonderful virtual-real combination effect with the physical objects behind.
3. Bright image colors and high contrast ratio.
4. Dynamic content (e.g., product disassembly, process demonstration) can generate strong visual appeal, making the displayed objects stand out instantly.
5. No need to occupy additional space for projectors or screens. Customizable size, shape (e.g., curved, vertical) and appearance style according to needs, perfectly integrating into various decoration environments.
6. Can integrate interactive devices such as touch film, somatosensory sensors and radar; transforms one-way display into two-way interaction.



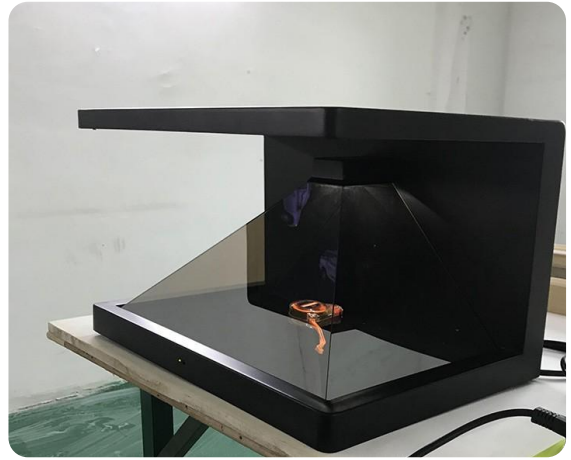
01 Main Function

- ◆ 1. Adds dynamic information to commodities; plays video content; endows products with deeper cultural connotations.
- ◆ 2. Touch to browse product catalogs, check preferential information, participate in interactive games or even make direct purchases by scanning codes.
- ◆ 3. Programmable playback of circular or customized advertising content; images seem to float in the air, with advertising effects far exceeding traditional static posters or LCD screens.
- ◆ 4. Efficient and convenient content release and schedule management; supports unified content update for multiple holographic cabinets scattered in different locations via the network.

02 Screen Size



Holographic Display Cabinet



Core Advantage	
Virtual & Physical, Strong Immersion	Digital content and physical products seamlessly integrate, creating a synergistic effect where 1+1>2.
High-tech and eye-catching	The innovative format quickly grabs attention and effectively elevates brand image.
Protect items and reduce damage	Especially suitable for valuable, fragile exhibits, minimizing direct contact
Large information capacity, vivid and intuitive	Transforms tedious text descriptions into vivid dynamic visuals for higher communication efficiency
Customizable and flexible, adaptable to various spaces	Both size and content can be highly customized to meet display needs in different scenarios

Holographic Display Cabinet

Product Case



03 Application Fields

- ◆ 1. Dynamically displays product design inspiration, diamond cutting process, operation principle of complex movements, etc. Avoids wear caused by frequent physical touch, and greatly improves the artistic value and scarcity of products with digital content.
- ◆ 2. Displays the internal structure of mobile phones, chip performance comparison, or demonstrates how smart home devices work together; transforms abstract technical parameters into intuitive and vivid visual experiences.
- ◆ 3. Next to automobile models or key components (e.g., engines, batteries), holographically displays their working principles, safety technology disassembly, new energy technology advantages, etc., helping customers deeply understand product strength.
- ◆ 4. For precious and fragile cultural relics, dynamically restores their historical usage scenarios, production processes or restoration processes without affecting the viewing of physical objects; for scientific and technological exhibits, can analyze internal structures, making knowledge transmission more intuitive and interesting.
- ◆ 5. Cool display effects instantly attract customer flow, enhance the enterprise's high-end and innovative brand image, and stand out in exhibitions.
- ◆ 6. Used to display game figures and anime characters, making the characters move dynamically, interact with fans, and increase IP popularity.
- ◆ 7. Displays drug molecular models, medical device usage processes and human anatomical structures, making complex medical knowledge easy to understand.