

## 广东创智智能装备有限公司

Guangdong Chuangzhi Intelligent Equipment Co., Ltd

地址:肇庆市高新区迎宾大道2号之二厂房1自编1号  
 Add :No.2 Yingbin Avenue, High-tech Zone, Zhaoqing City, Guangdong Province, China

电话 Tel: +86-758-6626158

传真 Fax: +86-758-6626539

公司网址: <https://www.attractivechina.com> (中文版)  
 Company Website <https://www.attractivechina.net> (English)

公司邮箱: [attractive@vip.163.com](mailto:attractive@vip.163.com)  
 Company Email



Attractive® 创智



Attractive® 创智

数智化涂装智能装备系统集成商

Digital Coating Intelligent Equipment System Integrator

(2026版) (Published in 2026)

**Attractive® 创智**



## 三维AI数智涂装能源管理 工业技术创新应用

3D AI Digital Coating and Energy Management  
Industrial Technology Innovation  
Applications

**32年专注涂装行业**  
 32 years of focus on the painting industry  
**数智化涂装智能装备系统集成商**  
 Digital Coating Intelligent Equipment System Integrator



中文官网  
Chinese official website



英文官网  
English official website



俄文官网  
Russian official website



微信二维码  
Wechat qr code



公众号  
Public account



抖音二维码  
Tiktok qr code

肇庆创智科技有限公司  
Zhaoqing Chuangzhi Technology Co., Ltd

广东创智环保装备有限公司  
Guangdong Chuangzhi Environmental Protection Equipment Co., Ltd

广东创智科技研究院  
Guangdong Chuangzhi Technology Research Institute

# 目录

## CONTENTS

- 公司简介 Company Profile 03-04
- 公司资质 Company Qualification 05-06
- 公司历程 Company History 07-08
- 公司优势 Company Advantages 09-14
- 行业现状 Industry Status 15-16
- 专利装备 Patent Equipment 17-26
- 数智化管理 Digital Management 27-32
- 网络化服务 Network Service 33-40
- 智能化产品 Intelligent Product 41-68
- 绿色化理念 Green And Environmentally Friendly 69-74
- 合作共赢 Win-win Cooperation 75-76

# COMPANY PROFILE

公司成立至今	32年	公司现有职员	280余人
实缴资本	6080万元	生产场地	自有厂房 45亩+80亩
涉及行业	家电及炊具、木器及乐器、汽车配件、五金配件、工业装备、轨道交通、航空航天		
公司信誉	为2000家企业筹划自动化涂装成套装备生产线		
公司人才	高级职称3人, 中级职称7人	30年以上	
	特级技师1人, 高级技师1人, 技师19人, 高级技能34人, 中级技能39人	10年以上	
	柔性国内博士7人, 研究生行业导师4人	8年以上	
公司文化	公司愿景: 成为全球领先的涂装智能装备集团		
	公司使命: 创立涂装行业新标杆 让涂装更简单		
	公司核心价值观: 专业 高效 团结 成就		
	公司核心理念 经营理念: 创国际品牌 做百年创智    人才理念: 专业担当 德才兼备 产品理念: 匠心智造 节能环保        服务理念: 快速响应 为客户创造价值		

Since the establishment of the company	32 years	The current staff of the company	More than 280 people
Registered capital	60.8 Million CNY	Production site	Self-owned factory buildings: 45 acres + 80 acres
Involving industries	Home appliances and cooking utensils, woodwork and musical instruments, auto parts, hardware accessories, industrial equipment, rail transit, aerospace		
Company reputation	Plan automated painting complete equipment production lines for 2000 enterprises		
Company talent	3 individuals with senior professional titles, and 7 individuals with intermediate professional titles	30+ years	
	1 special-grade technician, 1 senior technician, 19 technicians, 34 individuals with advanced skills, and 39 individuals with intermediate skills	10+ years	
	7 flexible domestic Ph.D. holders and 4 industry mentors for graduate students	8+ years	
Corporate culture	Company vision: to become a globally leading group in intelligent painting equipment		
	Company mission: Establish a new benchmark in the painting industry, making painting simpler		
	Company core values: professionalism, efficiency, unity, and achievement		
	Company's core philosophy Business philosophy: Create an international brand, build a century-old intelligent enterprise Talent philosophy: Professional responsibility, integrity and ability Product concept: Craftsmanship and Innovation, Energy Saving and Environmental Protection Service philosophy: Quick response, creating value for customers		

## 10大核心技术 10 Core Technologies

### ① 机器人喷涂和工件控制

机器人自动进行工件控制和喷涂, 实现密闭空间及无人化作业

### ① Robot coating and workpiece control

Robots automatically control and coating workpieces, achieving enclosed spaces and unmanned operations

### ② 多工位多角度喷涂

自动识别产品的位置和摆放角度, 自动修正喷涂程序适应产品位置

### ② Multi station and multi angle coating

Automatically identify the position and placement angle of the product, and automatically adjust the coating program to adapt to the product position

### ③ 视觉在线无损检测

涂装表面缺陷实时检测系统, 实现全方位、多检测点在线无损检测

### ③ Visual online non-destructive testing

Real time detection system for coating surface defects, achieving comprehensive and multi point online non-destructive testing

### ④ 自动识别生成喷涂路径

融合三维AI视觉感知和机器人自动化, 实现智能化、高精度与自适应控制

### ④ Automatically identify and generate coating paths

Integrating 3D AI visual perception and robot automation to achieve intelligence, high precision, and adaptive control

### ⑤ 余热回收利用

高温炉中吸取气体, 进行热交换回流, 解决热能回收, 达到节能目的, 为企业带来巨大效益

### ⑤ Waste heat recovery and utilization

Gas is extracted from the high-temperature furnace for heat exchange and reflux, solving the problem of heat recovery and achieving energy-saving goals, bringing huge benefits to the enterprise

### ⑥ 废气净化环保免排放

回收之热废气经冷凝器过滤回流至前处理槽体, 达到免排及节省药剂

### ⑥ Exhaust gas purification, environmental protection, and emission free

Therecovered hot exhaust gas is filtered and refluxed to the pre-treatment tank through the condenser, achieving no discharge and saving chemicals

### ⑦ 重型工件转角摆渡

提升了重型工件移动稳定性, 实现小范围内的重型工件转角工作

### ⑦ Heavy duty workpiece corner shuttle

Improved the stability of heavy workpiece movement and achieved small-scale rotation of heavy workpieces

### ⑧ 柔性多通道输送系统

生产灵活性极高, 减少设备对场地的占地面积, 提高效率, 多组通道系统同时生产

### ⑧ Flexible multi-channel conveying system

The production flexibility is extremely high, reducing the footprint of equipment on the site, improving efficiency, and producing multiple sets of channel systems simultaneously

### ⑨ 积放式输送涂装

实现多通道混线生产和线上暂存功能

### ⑨ Stacked conveyor coating

Implement multi-channel mixed production and online temporary storage functions

### ⑩ 云平台远程运维

运维人员无需亲自到现场, 通过远程连接和控制, 实现高效的管理和维护

### ⑩ Cloud platform remote operation and maintenance

Operations personnel do not need to physically visit the site, and can achieve efficient management and maintenance through remote connection and control

# 公司 资质

COMPANY  
QUALIFICATION



National Intellectual Property  
Demonstration Enterprise



High-tech Enterprises



Guangdong Province Automation  
Coating Complete Equipment  
Engineering Technology Research Center



Innovative Small and  
Medium-sized Enterprises



Technology Oriented Small and  
Medium-sized Enterprises



Group Standard Drafting Unit



专精特新  
“小巨人”企业  
Specialized and Innovative  
“little Giant” Enterprise

服务的客户	500强公司	10家以上	总计金额:2亿以上
	国企/央企	50家以上	总计金额:5亿以上
	上市公司	200家以上	总计金额:10亿以上
	大中型企业	400家以上	总计金额:10亿以上

Served Clients	Top 500 companies	More than 10 companies	Total amount: over 200 million
	State owned enterprises/ central enterprises	More than 50 companies	Total amount: over 500 million
	listed company	More than 200 companies	Total amount: over 1 billion
	large and medium-sized enterprises	More than 400 companies	Total amount: over 1 billion

资质荣誉	发明专利	77个	2019-2024年连续6年获得 广东省首台(套) 重大技术装备研制与 推广应用项目入库
	实用新型专利	122个	
	外观专利	7个	
	软件著作权专利	89个	
	PCT海外专利	4个	
	高新技术产品	18项	
	粤港澳优质产品		1项
	发明创业创新证书		1项
	知识产权管理体系认证证书		1项
	安全生产标准化证书		1项
售后服务认证证书(五星级)		1项	
两化融合管理体系评定证书		1项	
科技成果评价国际先进水平1项、国内领先水平2项			

Qualifications and Honors	Invention patent	77 of them	Received the first major technical equipment development and promotion application project in Guangdong Province for six consecutive years from 2019 to 2024
	Utility model patent	122 of them	
	Design patent	7 of them	
	Software copyright patent	89 of them	
	PCT Overseas Patent	4 of them	
	High-tech products	18 items	
	High quality products from Guangdong, Hong Kong, and Macau		1items
	Certificate of Invention, Entrepreneurship and Innovation		1items
	Intellectual Property Management System Certification		1items
	Safety Production Standardization Certificate		1items
	After sales Service Certification Certificate (Five Star)		1items
	Certificate of Evaluation for the Integration of Informatization and Industrialization Management System		1items
	Evaluation of scientific and technological achievements: 1 international advanced level and 2 domestic leading levels		

# 公司 历程

COMPANY  
HISTORY

# 20<sup>th</sup>

## 涂装装备行业

Coating equipment industry

### 2005年(2004年非正式成立)

公司成立  
Company established

### 2006年

获得ISO国际质量体系认证  
Obtaining ISO international quality system certification

### 2008年

公司迁入东莞东坑扩大生产  
The company relocated to Dongguan Dongkeng to expand production

### 2011年

认定为广东省民营科技企业  
Identified as a private technology enterprise in Guangdong Province

### 2014年

认定为安全生产标准化企业  
Identified as a safety production standardization enterprise

### 2015年

认定为高新技术企业  
Identified as a high-tech enterprise

### 2016年

公司迁入肇庆国家高新技术开发区(自购地)  
The company relocated to Zhaoqing National High tech Development Zone (self purchased land)

### 2018年

与广东工业大学共建"产学研基地"  
Jointly build "industry-university-research base" with Guangdong University of Technology

### 2019年

认定为国家知识产权优势企业  
首台套:前处理连喷粉及喷漆生产线  
Recognized as a national intellectual property advantage enterprise  
First set: pre-treatment, powder spraying and painting production line

### 2020年

认定为广东省专精特新中小企业  
首台套:不粘锅氧化融射生产线  
Identified as a special small and medium-sized enterprise in Guangdong Province  
First set: Non stick pot oxidation and melting production line

### 2021年

认定为广东省自动化涂装成套装备工程技术研究中心  
首台套:轨道交通装备涂装设备  
Identified as Guangdong Province automatic coating complete equipment engineering technology research center  
First set: Coating equipment for rail transit equipment

### 2022年

获得科学技术成果评价证书-轨道交通装备涂装生产线(国内领先)  
获得团体标准起草单位证明-木器静电喷涂生产线通用技术要求  
首台套:浸式前处理及喷粉线(吊挂线)  
Obtained the Certificate of scientific and Technological Achievements Evaluation - Rail Transit Equipment coating Production Line (Leading in China)  
Obtained the certificate of the drafting unit of the group standard - General technical requirements for the electrostatic spraying production line of woodware  
First set: Dipping pre-treatment and powder spraying line (hanging line)

### 2023年

认定为国家专精特新“小巨人”企业  
首台套:环形变速自动喷涂生产线  
环境治理服务企业(甲级)  
Identified as a national specialized and innovative "little giant" enterprise  
First set: ring speed automatic spraying production line  
Environmental governance Service Enterprise (Grade A)

### 2024年

建设创智数智化智能工厂(华为云 Sparkpack ERP业财一体化升级项目,PLM产品全生命周期管理项目)  
Construction of Chuangzhi Digital Intelligent Factory (Huawei Cloud Sparkpack ERP Industry Finance Integration Upgrade Project, PLM Product Lifecycle Management Project)

### 2025年

构建数智化SAP系统  
荣列广东省制造业中小企业百强企业  
自购地:80亩  
Building a Digital SAP System  
Ranked among the Top 100 SMEs in Guangdong Province's Manufacturing Industry  
Self purchased land: 80 acres

High quality development system  
高质量发展体系

# 创智8化优势

## 8 advantages

① 生产模式流程化  
Process Oriented Production Mode

整线设备自动化程度高, 工艺流程和技术先进, 可实现降本增效。  
The whole line equipment has a high degree of automation, advanced process flow and technology, which can achieve cost reduction and efficiency improvement.

② 管理理念人性化  
Humanized Management Philosophy

注重员工技能成长, 定期组织员工进行安全产品技术培训。  
The main focus is on employee skill growth, and regular safety product technical training is organized for employees.

③ 设备交期准时化  
On Time Delivery Of Equipment

引进了SRM、PMS等数智化智能项目管理平台, 打通项目安装全流程, 提高工作效率。  
Introduced digital intelligent project management platforms such as SRM and PMS, integrated the entire project installation process, and improved work efficiency.

④ 设备功能智能化  
Intelligent Device Functionality

根据客户的需求提供定制化解决方案, 基于工业互联网技术为客户提供智能化、数智化的服务。  
Provide customized solutions according to customers' needs, and provide customers with intelligent and digital services based on industrial Internet technology.

⑤ 设备性能稳定化  
Equipment Performance Stabilization

设备以自动化、柔性化生产为主, 采用MES实时监测, 可视化生产进度管理。  
The equipment mainly focuses on automated and flexible production, using MES real-time monitoring and visual production progress management.

⑥ 品质保证标准化  
Quality Assurance Standardization

实施全面的质量把控严格控制原料采购产品监测等。  
Implement comprehensive quality control, strictly control raw material procurement, product monitoring, etc.

⑦ 采购渠道稳定化  
Stabilizing Procurement Channels

筛选优质供应商, 直接从厂家提货, 品质、货期、价格有保障。  
Select high-quality suppliers and directly pick up goods from the manufacturer, ensuring quality, delivery time, and price.

⑧ 服务专业及时化  
Professional And Timely Service

高效服务随时待命快速响应为您提供贴心服务, 让您事半功倍。  
Efficient service always on standby, quick response to provide you with thoughtful service, allowing you to achieve twice the result with half the effort.



### 我们是一支专业的团队

我们的技术成员拥有国家颁发的职业培训证书, 如: 高级涂装工程师、仪器仪表专业高级工程师; 电工职业资格证书、特种作业操作证; 焊工职业技能等级证、特种作业操作证等。

### 我们是一支专注的团队

我们坚信, 优秀的品牌源自客户的信任, 只有专注, 才能做好品质。

### 我们是一支成熟的团队

我们的团队在涂装行业从事近32年, 拥有丰富的数智化/自动化的设计能力及制造经验, 培训客户人员操作能力及建立管理标准模式。

### 我们是一支有梦想的团队

我们来自五湖四海, 因为一个共同的梦想: 打造涂装行业标杆企业, 为客户解决涂装专业技术的问题。

### We are a professional team

Our technical members have vocational training certificates issued by the state, such as: Senior Coating Engineer, Senior Engineer in Instrumentation and Instrumentation; Electrician professional qualification certificate and special operation certificate; Welder vocational skill level certificate, special operation certificate, etc.

### We are a dedicated team

We firmly believe that excellent brands stem from the trust of customers, and only by focusing can we achieve good quality.

### We are a mature team

Our team has been engaged in the coating industry for nearly 32 years, with rich digital/automated design capabilities and manufacturing experience, training customer personnel in operational skills, and establishing management standard models.

### We are a team with a dream

We come from all over the world, with a common dream: to build a benchmark enterprise in the coating industry and solve professional technical problems for customers.

协会工作成果

WORK RESULTS OF THE ASSOCIATION

广东创智智能装备有限公司累计加入超过20家行业协会,包括:

- 中国家具协会
- 中国乐器协会
- 中国表面工程协会涂装分会
- 中国设备管理协会涂装产业发展促进中心
- 广东省制造业协会
- 广东省环境保护产业协会
- 广东省行业协会联合会
- 广东省新能源汽车产业协会
- 肇庆市新能源汽车行业协会等

Guangdong Chuangzhi Intelligent Equipment Co., Ltd. has joined more than 20 industry associations, including:

- China Furniture Association
- China Musical Instrument Association
- China Surface Engineering Association coating branch
- China Equipment Management Association painting industry development promotion center
- Guangdong Manufacturers association
- Guangdong Environmental Protection Industry Association
- Guangdong Federation of Trade Associations
- Guangdong new energy automobile Industry Association
- Zhaoqing new energy automobile industry association, etc



知识产权

INTELLECTUAL PROPERTY

创智公司连续六年获得广东省首台套重大技术工程推广入库,拥有国家标准1项,团体标准2项,企业标准5项,目前在涂装装备领域及环保设备领域共获得200余项专利,CE/EAC认证及众多的行业证书并应用于客户现场,赢得业内一致好评。

Chuangzhi Company has won the first major technical engineering promotion and storage in Guangdong Province for six consecutive years, with one national standard, two group standards, and five enterprise standards. Currently, it has obtained more than 200 patents in the fields of painting equipment and environmental protection equipment, CE/AAC certification, and numerous industry certificates, which have been applied to customer sites and have won unanimous praise in the industry.



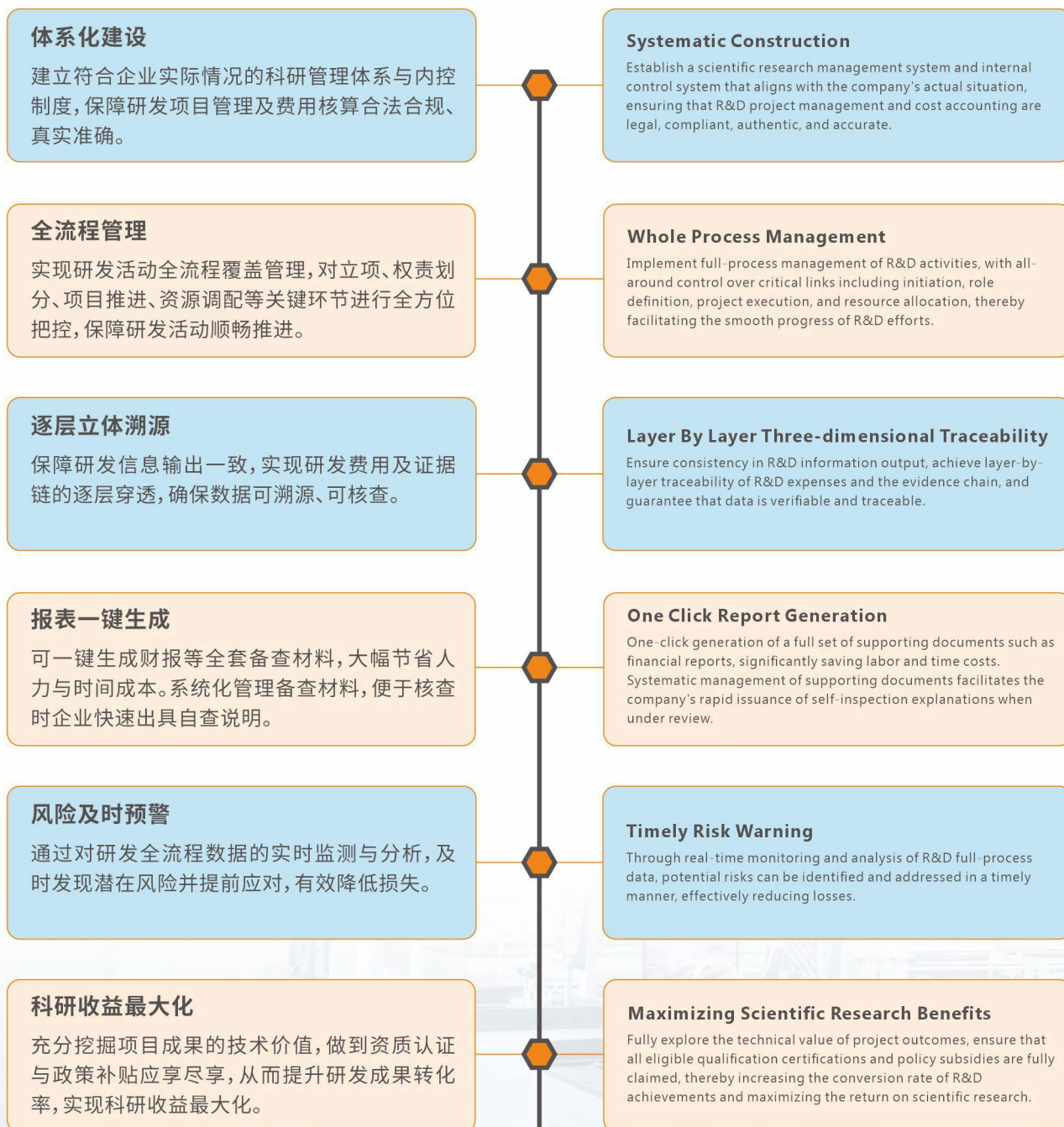
High quality development system 高质量发展体系

广东省自动化涂装成套装备工程技术研究中心

GUANGDONG PROVINCE AUTOMATION COATING COMPLETE EQUIPMENT ENGINEERING TECHNOLOGY RESEARCH CENTER

公司拥有涂装智能装备行业32年上下游整合能力,配置研发团队54人,获得涂装装备的智能控制、柔性化多通道、涂装废气高效处理设备、余热回收再利用等关键技术。

The company possesses 32 years of upstream and downstream integration capabilities in the intelligent coating equipment industry, with a dedicated R&D team of 54 members. It has mastered key technologies such as intelligent control of coating equipment, flexible multi-channel systems, high-efficiency exhaust gas treatment devices, and waste heat recovery and reuse.



产学研一体化

INTEGRATION OF INDUSTRY, ACADEMIA, AND RESEARCH

公司与科研院所、高等院校建立深度战略合作,强强联手发挥产学研的优势,着力提高核心技术、关键技术及新产品的研发能力等方面合作,助推企业高质量发展。

2020年,广东创智与肇庆学院合作开发“列车自动化喷涂控制系统及其装备的研发”。

2021年,双方签订“共建产业学院”,合作建设新能源汽车产业学院。

2023年,与北京理工大学珠海学院合作,成立“产学研合作基地”。

2023年,与广东建设职业技术学院合作,成立“实践教学基地”

整合

- ◆ 广东工业大学、北京理工大学珠海学院
- ◆ 肇庆市新能源汽车行业协会
- ◆ 广东省新能源汽车企业优势资源

构建“高校、企业、行业”一体化的人才培养新模式。

The company has established deep strategic cooperation with research institutes and higher education institutions, leveraging the advantages of industry, academia, and research, focusing on improving the research and development capabilities of core technologies, key technologies, and new products, and promoting high-quality development of the enterprise.

In 2020, Guangdong Chuangzhi collaborated with Zhaoqing University to develop the "Research and Development of Train Automatic Spray Control System and Equipment".

In 2021, both parties signed a "Joint Construction Industry College" to cooperate in the construction of a new energy vehicle industry college.

In 2023, we will cooperate with Zhuhai College of Beijing Institute of Technology to establish the "Industry University Research Cooperation Base".

In 2023, we will cooperate with Guangdong Construction Vocational and Technical College to establish a "practical teaching base"

Conformity

- ◆ Guangdong University of Technology and Zhuhai College of Beijing Institute of Technology
- ◆ Zhaoqing new energy automobile industry association
- ◆ Advantages and Resources of New Energy Vehicle Enterprises in Guangdong Province

Build a new integrated talent cultivation model of "universities, enterprises, and industries".



部分传统涂装装备与创智专利涂装装备对比

COMPARISON BETWEEN SOME TRADITIONAL COATING EQUIPMENT AND CHUANGZHI PATENTED COATING EQUIPMENT

传统部分装备 Traditional equipment	痛点 Pain point	创智部分装备 Creative Intelligence Equipment	优点 Advantage	专利产品及专利号 Patent products and patent numbers
普通自动喷砂系统 Ordinary automatic sandblasting system	有夹具、有人值守 There are fixtures and personnel on duty	无夹具高效智能喷砂系统 Efficient and intelligent sandblasting system without fixtures	无夹具、无人化 No fixtures, unmanned	发明专利 Invention patent ZL202510362623.1
普通前处理废气装置 Ordinary pre-treatment exhaust gas device	废气有排放 There are emissions of exhaust gas	前处理废气冷凝免排装置 Pre treatment exhaust gas condensation device without discharge	无废气排放 No exhaust emissions	发明专利 Invention patent ZL202410328378.8
普通烘干天然气加热 Ordinary drying with natural gas heating	炉废气有排放 The furnace produces exhaust emissions	闭环除湿干燥机组 Closed loop dehumidification and drying unit	炉废气零排放 No furnace exhaust emissions	发明专利 Invention patent ZL201911335536.8
普通涡旋喷漆室 Ordinary vortex paint booth	漆雾处理效率低 Low efficiency of paint mist treatment	高效文氏喷漆室 Efficient Wen's Spray Painting Room	漆雾处理效率高 High efficiency of paint mist treatment	发明专利 Invention patent ZL202110414703.9
单一输送系统 Single conveying system	输送单一 Poor flexibility	柔性多通道输送系统 Flexible multi-channel conveying system	多条输送线协同输送 Collaborative transportation of multiple conveyor lines	发明专利 Invention patent ZL202111511133.1
漆渣处理装备 Paint residue treatment equipment	投资大 Large investment	在线除渣装置 Online slag removal device	投资小 Small investment	实用新型专利 Utility model patent ZL202123122319.6
水帘柜+水洗塔 Water curtain cabinet +washing tower	产生废水 Wastewater is generated	干式喷漆室 Dry spray booth	不产生废水 No wastewater generated	实用新型专利 Utility model patent ZL201821622594.X
本地传统运维系统 Local traditional operation and maintenance system	运行成本高 High operating costs	云平台远程运维系统 Cloud platform remote operation and maintenance system	运行成本低 Low operating costs	自动化程度高 High degree of automation
手动示教编程 Manual demonstration programming	依赖人工控制 Relying on manual control	自动识别生成喷涂路径 Automatically identify and generate spraying paths	自适应控制 Adaptive control	智能化程度高 High degree of intelligence
普通悬挂输送系统 Ordinary suspension conveyor system	依赖人工管理 Relying on manual management	积放式输送系统 Stacked conveying system	数据驱动管理 Data driven management	数智化程度高 High degree of digitization

深耕涂装行业三十余载，创智公司以先进的涂装研究成果为核心，打造涂装智能装备，推动传统设备数智化、智能化升级，为企业高质量发展注入新引擎，引领行业新标准，最终提升消费者体验。

With 30+ years in the coating industry, Chuangzhi builds intelligent coating equipment using advanced research. Through digital and smart upgrades to traditional systems, it powers high-quality development, sets new industry standards, and enhances consumer experience.

传统部分涂装装备 TRADITIONAL COATING EQUIPMENT 案例展示 CASE SHOWCASE 创智部分专利涂装装备 CHUANGZHI'S PATENTED COATING EQUIPMENT



普通自动喷砂系统  
Ordinary automatic sandblasting system

无夹具高效智能喷砂系统  
Efficient and intelligent sandblasting system without fixtures



普通前处理废气装置  
Ordinary pre-treatment exhaust gas device

前处理废气冷凝免排装置  
Pre treatment exhaust gas condensation device without discharge



普通烘干天然气加热  
Ordinary drying with natural gas heating

闭环除湿干燥机组  
Closed loop dehumidification and drying unit



单一输送系统  
Single conveying system

柔性多通道输送系统  
Flexible multi-channel conveying system



漆渣处理装备  
Paint residue treatment equipment

在线除渣装置  
Online slag removal device

High quality development system  
高质量发展体系



# 无夹具高效智能喷砂系统

No fixture smart sand blasting system



型号:CZLNCS011-02

发明专利号:ZL202510362623.1



## 产品优势/Product advantage

- 一、最新专利设计,无夹具、无人化;
- 二、接收前道产品,无序排列,全自动连线;
- 三、自动化程度高,运行成本低,产品可混件生产;
- 四、布局灵活,可满足直行、反向、90°布局;

- 1.Latest patented design,no fixtures, unmanned;
- 2.Receive the previous product, arranged in an unordered manner, fully automated online connection;
- 3.High degree of automation, low operating costs, and mixed production of products;
- 4.Flexible layout, capable of meeting straight, reverse, and 90 ° layouts;



High quality development system  
高质量发展体系



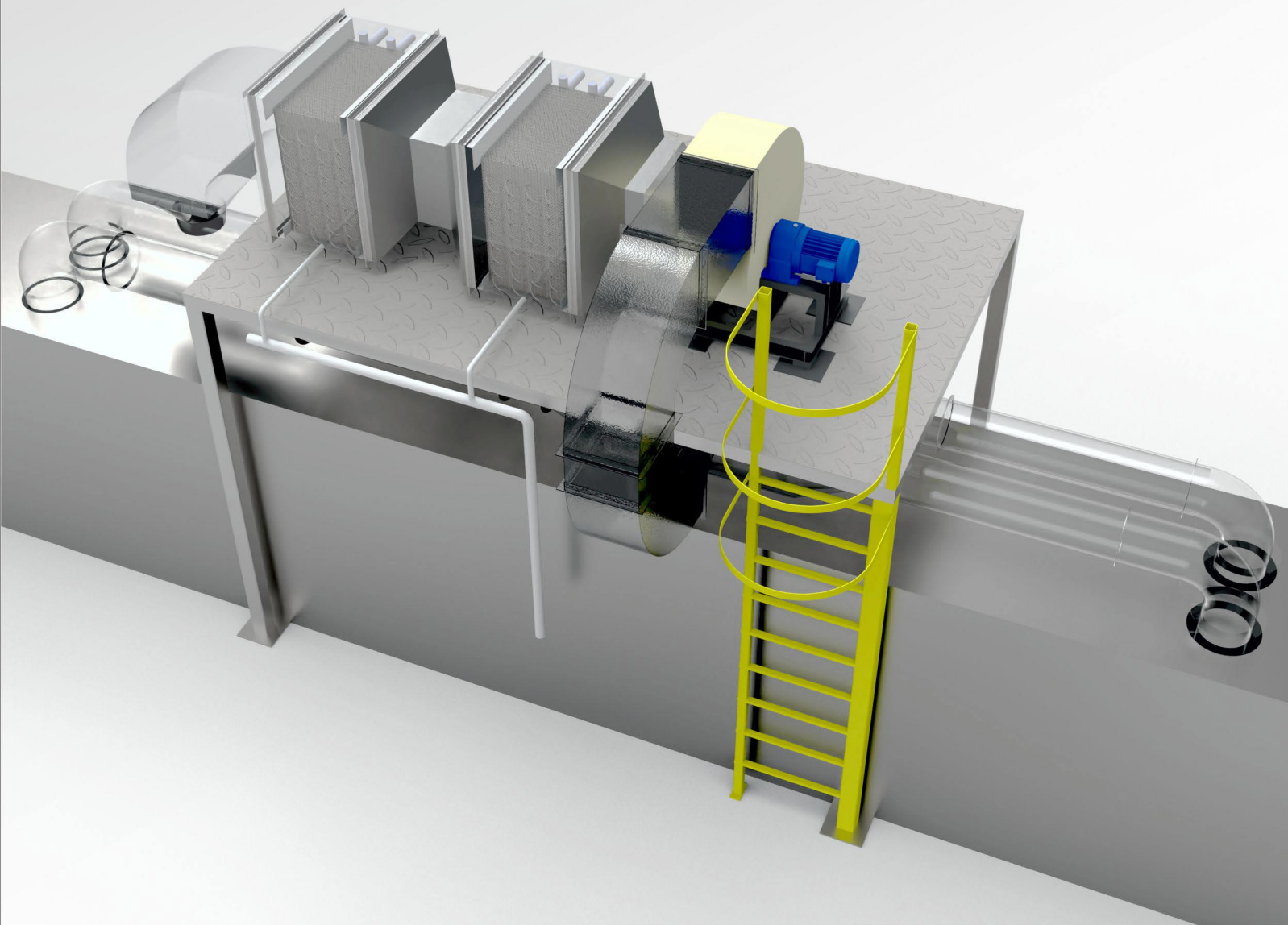
# 前处理废气冷凝免排装置

Pre-treatment exhaust gas condensation no-exhaust device



型号:CZLNCS011-01

发明专利号:ZL202410328378.8



## 产品优势/Product advantage

- 一、气体、污水零排放, 环保节能;
- 二、维护保养方便, 维修成本低;
- 三、减少设备投资, 无需末端环保设备;
- 四、节能减排, 降低能耗;

- 1.Zero emissions of gas and sewage, environmental protection and energy conservation;
- 2.Easy maintenance and low repair costs;
- 3.Reduce equipment investment and eliminate the need for end of pipe environmental protection equipment;
- 4.Energy conservation and emission reduction, reducing energy consumption;



High quality development system  
高质量发展体系



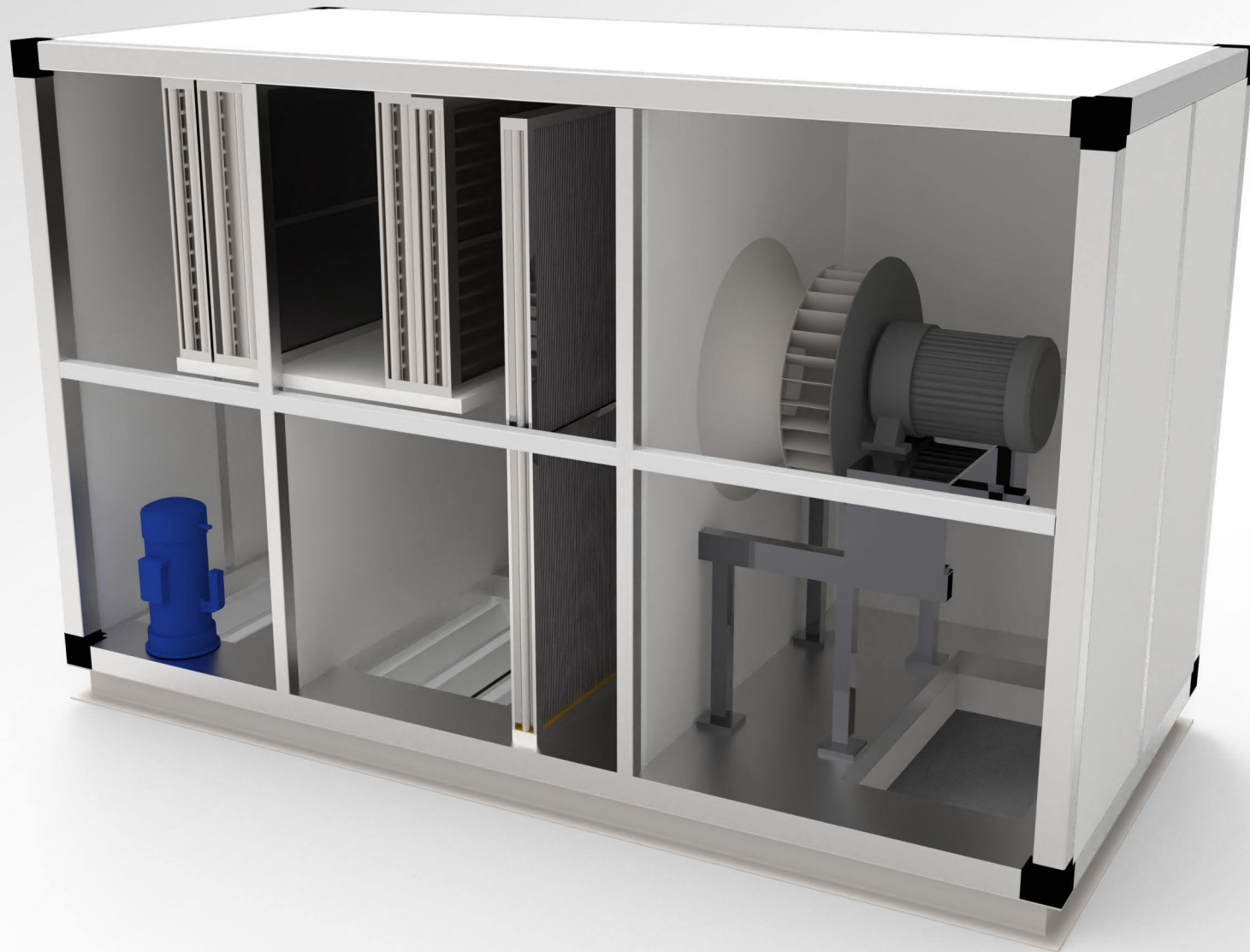
# 闭环除湿干燥机组

Closed-loop dehumidification and drying unit



型号:CZBHCSGZ004-01

发明专利号:ZL201911335536.8



## 产品优势/Product advantage

- 一、闭环运风工艺, 减少外排, 实现节能环保;
- 二、多级冷凝除湿中低温烘干技术, 降低资源消耗;
- 三、智能化控制, 保障稳定生产, 广泛应用于新能源等领域;

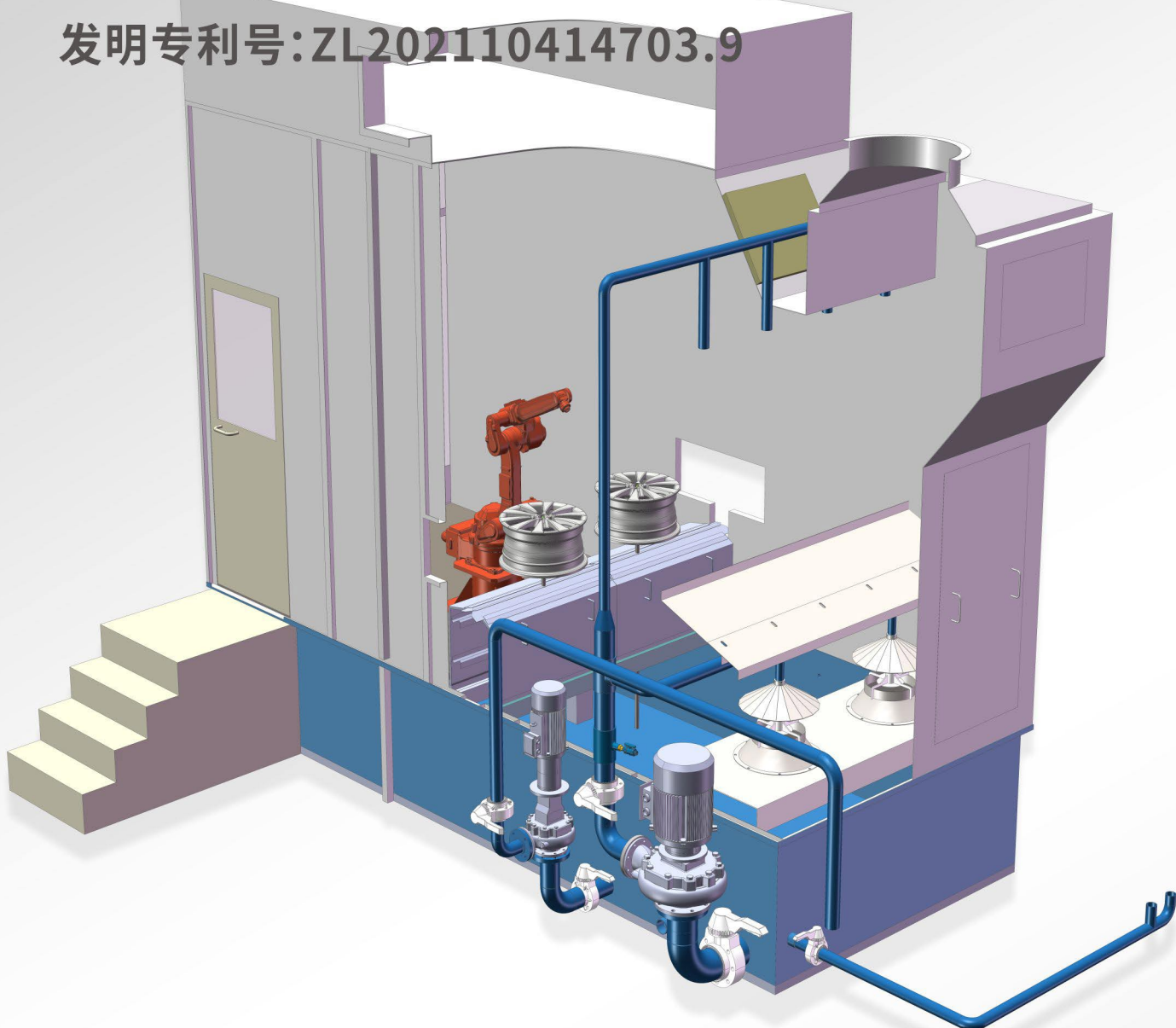
- 1.Closed-loop operation process to reduce external emissions and achieve energy saving and environmental protection;
- 2.Multi-level condensation dehumidification and low-temperature drying technology, reducing resource consumption;
- 3.Intelligent control, ensuring stable production, widely used in new energy and other fields;



High quality development system  
高质量发展体系

型号: CZWSSX005-01

发明专利号: ZL202110414703.9



### 产品优势/Product advantage

- 一、漆雾处理效率95%以上, 方便清洁;
- 二、维护保养方便, 维修成本低;
- 三、气水融合的处理方式, 适用于各类水式喷漆房;
- 四、有效截留气体中的颗粒物, 气体净化效率高;

- 1. Paint mist treatment efficiency of over 95%, convenient for cleaning;
- 2. Easy maintenance and low repair costs;
- 3. The gas water fusion treatment method is suitable for various types of water-based paint spraying rooms;
- 4. Effective interception of particulate matter in gas, high gas purification efficiency;





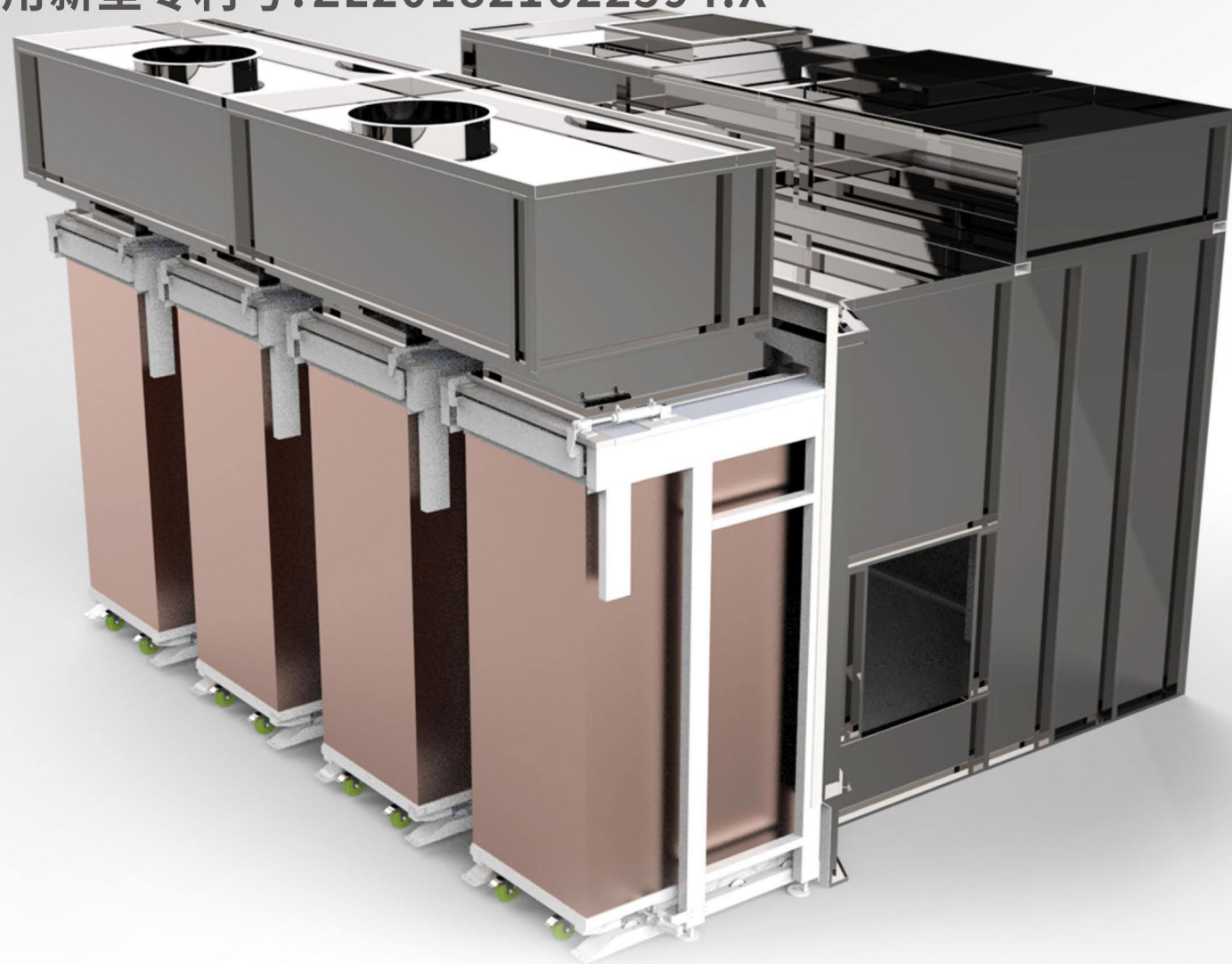
# 干式喷漆房漆雾收集系统

Dry spray paint room paint mist collection system



型号:CZGSPF009-01

实用新型专利号:ZL201821622594.X



## 产品优势/Product advantage

- 一、漆雾处理效率95%以上,处理后空气中漆雾量低,方便清洁;
- 二、维护保养方便,维修成本低;
- 三、无废水产生、漆渣量少,能耗及运行成本低;
- 四、带数值显示的压差报警器(过滤器堵塞检测),安全可靠;
- 五、漆雾经干式分离后,不会影响后端VOC处理设备的运行;

- 1.The efficiency of paint mist treatment is over 95%, and the amount of paint mist in the air after treatment is low, making it easy to clean;
- 2.Easy maintenance and low repair costs;
- 3.No wastewater generation, low amount of paint residue, low energy consumption and operating costs;
- 4.Differential pressure alarm with numerical display (filter blockage detection), safe and reliable;
- 5.After dry separation, the paint mist will not affect the operation of the back-end VOC treatment equipment;



High quality development system  
高质量发展体系

# 数智化管理

## DIGITAL MANAGEMENT



### 用数智化管理助推企业智造高质量发展

立足粤港澳大湾区，打造全国乃至全球的标杆企业

Using Digital Management to Promote High Quality Development of Intelligent Manufacturing in Enterprises Based in the Guangdong Hong Kong Macao Greater Bay Area, we aim to build a benchmark enterprise both nationally and globally

### 数智转型推动 科技引领行业

Digital transformation drives technology to lead the industry

公司引进了PMS智能项目管理数智化运营平台，PMS将CRM、PLM、SRM、ERP、MES、OA、BI融为一体，采用项目驱动模式，以成本为核心，实现项目更高效科学运作。

The company has introduced the PMS intelligent project management digital and intelligent operation platform. The platform integrates CRM, PLM, SRM, ERP, MES, OA, and BI into one system, adopts a project-driven model with cost at its core, and achieves more efficient and scientific project operation.

DIGITIZATION

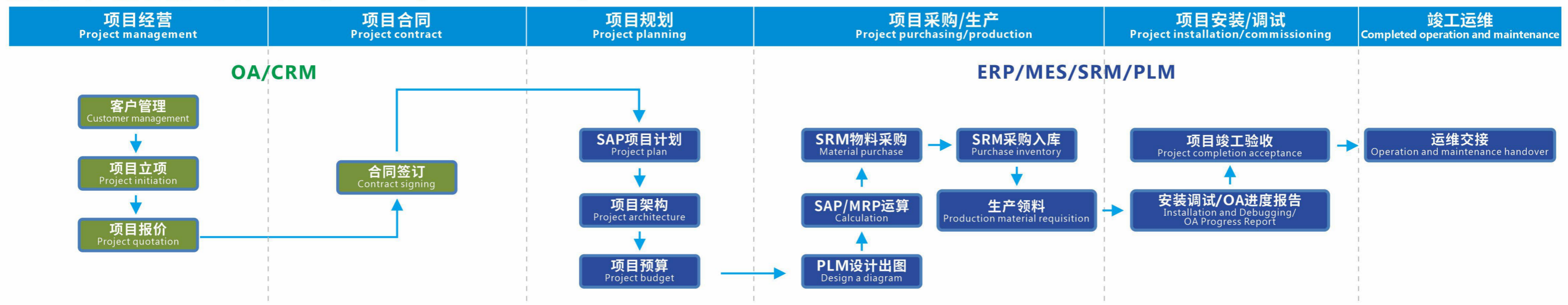
High quality development system  
高质量发展体系

## 基于5G技术的设备管理系统架构 Architecture of Device Management System Based on 5G Technology



高质量发展体系  
High quality development system

## 数智工厂信息化蓝图框架 Digital Factory Information Blueprint Framework



### 涂装节能数智化

Digitalization of Energy-Efficient Coating

## 全球顶尖的深度节能技术

开启智慧涂装超级节能新时代

The world's top deep energy-saving technology  
Embark on a new era of intelligent coating and super energy saving

#### 智能涂装+智慧控制系统

Intelligent coating + intelligent control system

核心算法  
Core algorithm

人工智能  
Artificial Intelligence

#### 虚拟传感技术

Virtual sensing technology

无需流量和压差传感器

No need for flow and pressure sensors

涂装节能国内领先、专利产品

Domestically leading coating energy saving, patented products

#### 效率寻优技术

Efficiency optimization technology

根据工况需求及最低能耗原则

According to the requirements of working conditions and the principle of minimum energy consumption

总是运行在高效区

Always running in the efficient zone

#### 多变量控制技术

Multivariate control technology

优化实时管控, 提升效率

Optimize real-time control and improve efficiency

#### 数智控制技术

Digital Control Technology

精确消除余量、降低损耗

Accurately eliminate excess and reduce losses

大数据及物联网  
Big data and the Internet of Things

融合多学科知识  
Integrating multidisciplinary knowledge

#### 超高效节能

Ultra efficient and energy-saving

大幅降低能耗

Significantly reduce energy consumption

实现显著的能源节约

Achieve significant energy savings

#### 安全性提升

Security Enhancement

设备及系统运行更加稳定安全

Equipment and system operation are more stable and secure

延长使用寿命

Extend service life

#### 可靠性提升

Reliability improvement

数据采集准确及时, 不受环境影响

Accurate and timely data collection, unaffected by environmental factors

运行平稳, 减少设备启停次数

Smooth operation, reducing the number of device starts and stops

#### 智能化升级

Intelligent upgrade

实现系统、设备、控制和管理

Implement systems, devices, controls, and management

全方位精准控制

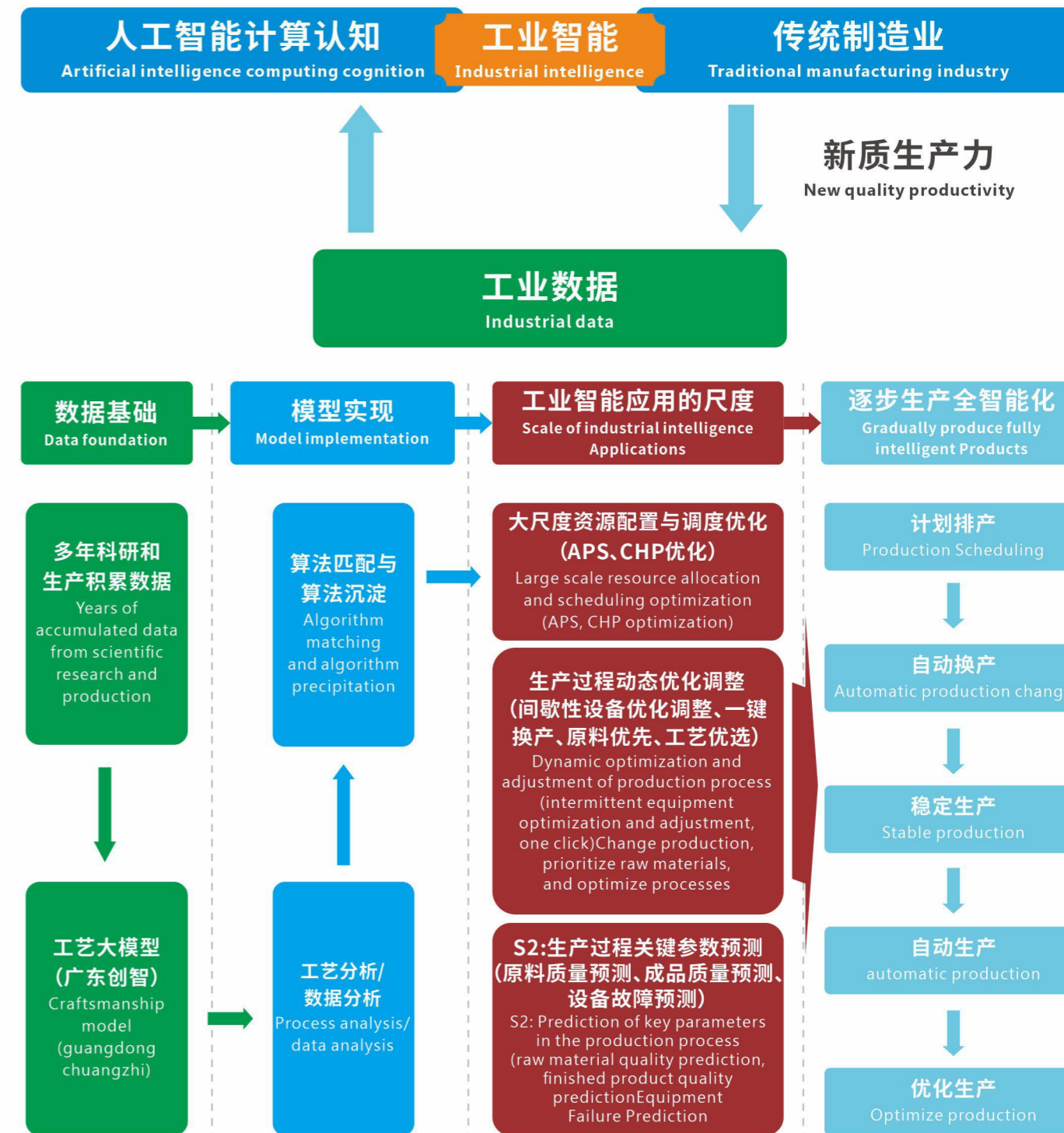
Comprehensive and precise control

### 大系统思维AI技术研发

Research and Development of AI Technology in Holistic Systems Thinking

"工业AI"是建立在强大算法引擎和工业生产数据组成的闭环而生成的AI计算与认知的结合。

Industrial AI "is the combination of AI computing and cognition generated based on a powerful algorithm engine and a closed loop of industrial production data.



# 网络化服务

NETWORK SERVICE



## 赋能企业**网络化服务**新基建!

让企业服务快速响应，为客户创造价值

Empowering new infrastructure for enterprise networked services!  
Enable enterprise services to respond quickly and create value for customers

**网络协同作业 服务驱动市场**  
Network collaborative work service-driven  
the market

NETWORKED

High quality development system  
高质量发展体系

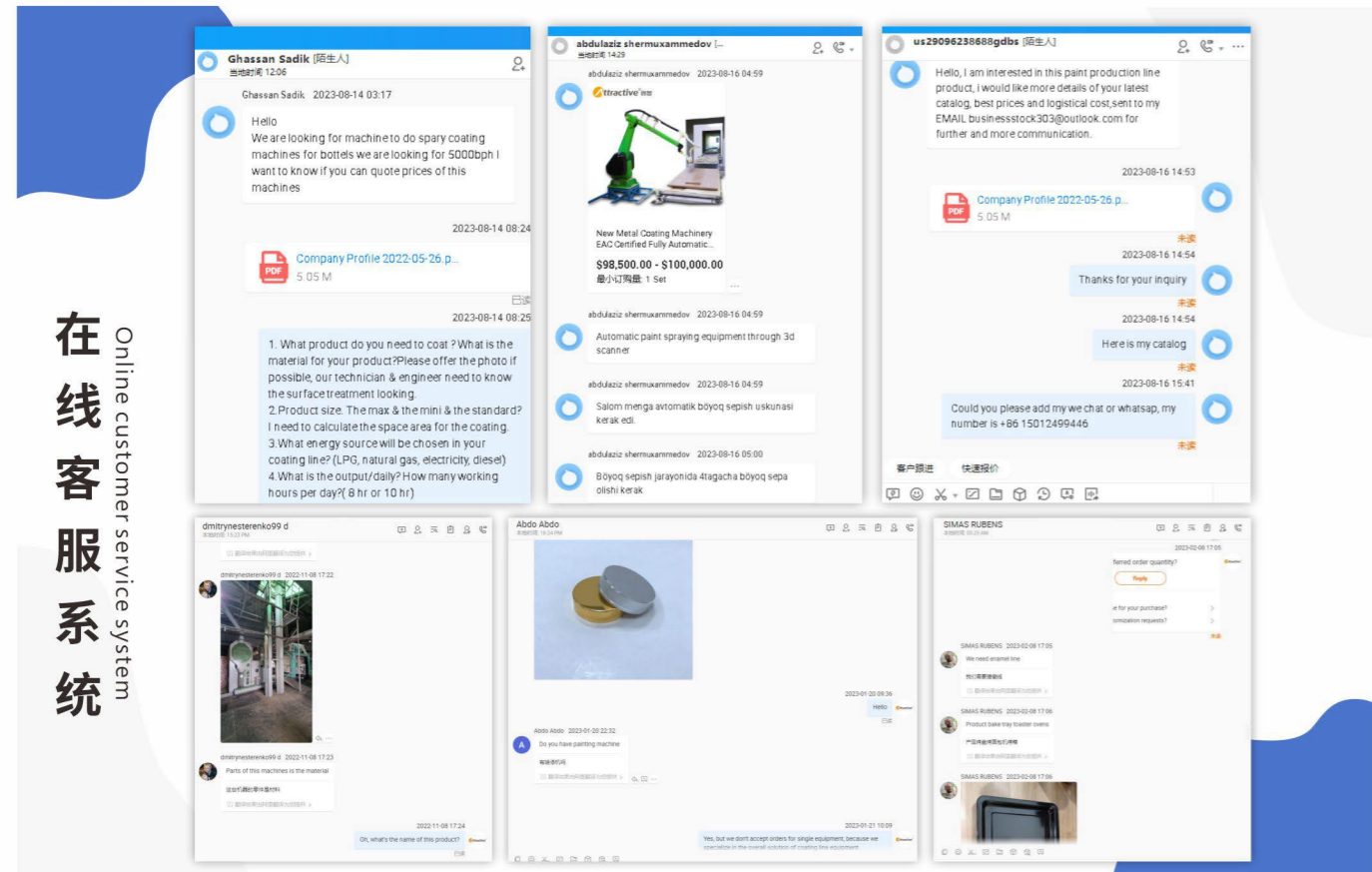
■ 线上网络/Online network

在售后方面,我们拥有一些完整、专业、权威和友好的平台网站为客户提供最优质的服务。

- 通过在线客服系统、聊天系统和电子邮件系统为客户提供更多的服务。
- 及时回复客户的问题和投诉,解决客户的问题。
- 与客户保持定期沟通,及时了解客户需求,提供优质的产品和服务。
- 在网站上提供详细的产品信息、图片、视频和其他信息。
- 在网站上提供产品报价表,让客户了解产品价格,并帮助客户选择最适合自己的产品。

In terms of after-sales service, we have some complete, professional, authoritative and friendly platform websites to provide customers with the best quality service.

- Provide more services to customers through the online customer service system, chat system and email system.
- Respond to customer questions and complaints in a timely manner to solve customer problems.
- Maintain regular communication with customers, timely understand customer needs, and provide quality products and services.
- Provide detailed product information, pictures, videos and other information on the website.
- Provide a product quotation table on the website, so that customers can understand the price of the product, and help customers choose the most suitable for their own products.



在线客服系统  
Online customer service system

国内外部分平台网站:

Some platform websites at home and abroad:



■ 远程管控/Remote control



高质量发展体系  
High quality development system

■ 服务流程/Service process



■ 服务承诺/Commitment to our customers




**售前服务**  
沟通及时准确, 现场考察, 根据客户要求, 量身定制设计。  
**Pre-sale services**  
Communicate timely and accurate, inspect on -site, and tailor -made design according to customer requirements.



**保修期满服务承诺**  
维保续签, 为客户提供终身免费的专业技术咨询服务。  
**Sales period full service commitment**  
Maintenance renewal, providing customers with free life -free professional technical consulting services.



**制造服务承诺**  
严格按图施工、确保产品质量、按期交货。  
**Manufacturing service commitment**  
Strictly follow the construction drawings, ensure product quality, and deliver on time.



**服务宗旨**  
专业专注 匠心智造 服务贴心 互赢互利  
**Service purposes**  
Professional focuses on ingenuity and intelligent manufacturing services, intimate and mutual benefit.



**保质期内的服务承诺**  
4小时内迅速响应; 定期回访、免费培训。  
零配件均免费 (易损件及人为因素除外)。  
**Service commitment during the warranty period**  
Respond quickly within 4 hours; Regular follow-up After-sales visits and free training sessions. spare parts are free (except for damaged parts and human factors).

# 市场分布 WIN-WIN COOPERATION



High quality development system  
高质量发展体系

广东创智团队从1994年起开始专注涂装行业,至今已整整32年,以其良好的声誉在国内、外市场上备受青睐,产品远销致**泰国、越南、印度、印尼、伊朗、孟加拉国、新加坡、俄罗斯、巴基斯坦、美国、墨西哥**等国家和地区。

Guangdong Chuangzhi team began to focus on the coating industry since 1994, has been a full 32 years, with its good reputation in the domestic and foreign market favored, products are exported to Thailand, Vietnam, India, Indonesia, Iran, Bangladesh, Singapore, Russia, Pakistan, America, Mexico and other countries and regions.

# 智能化产品

INTELLIGENT PRODUCTS



## 研发智能化产品 推进企业技术革新

聚拢产业链资源，助力企业智能制造

Developing intelligent products to promote technological innovation in enterprises  
Gather industry chain resources to help enterprises achieve intelligent manufacturing

创新驱动发展 智能引领未来  
Innovation driven development, intelligence  
leading the future

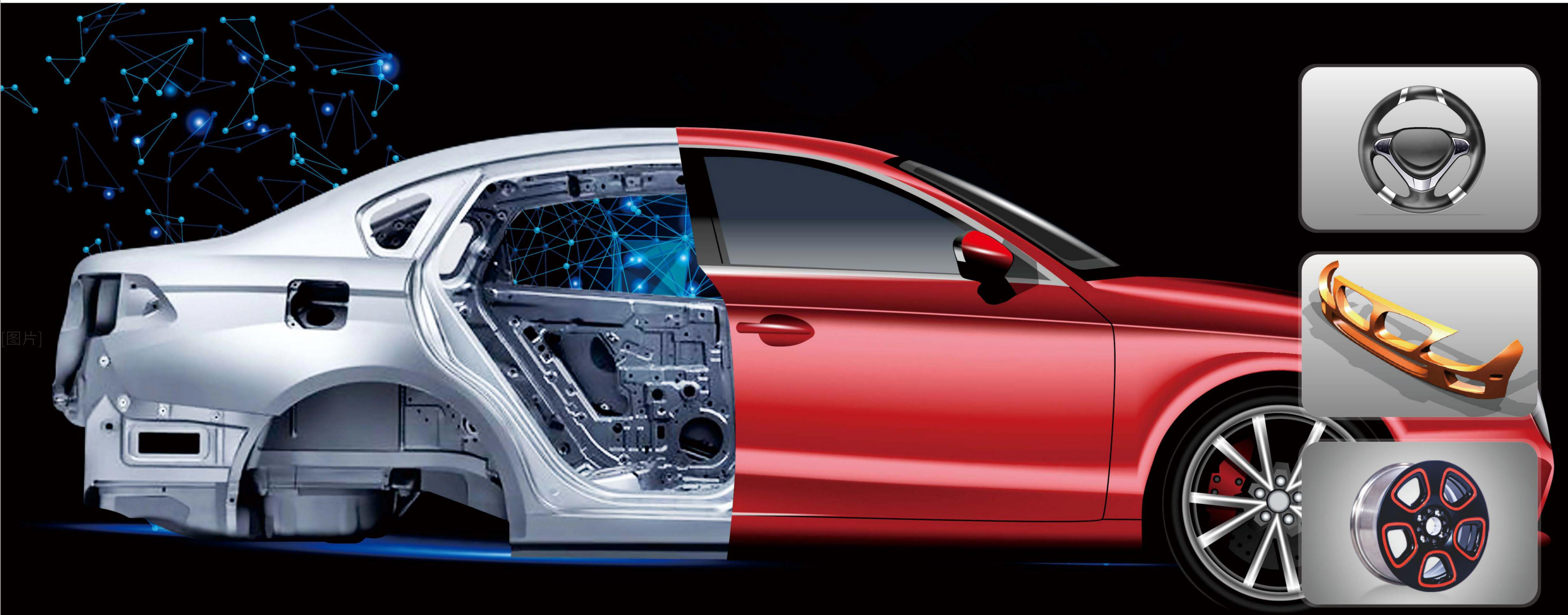


科技创新体系  
Technology Innovation System



# 汽车配件智能涂装系列

Auto parts intelligent coating series



[图片]

科技创新体系  
Technology Innovation System

## 部分合作伙伴/Partial partners





**汽车配件涂装生产线**  
适用于:汽车塑料件、车标、方向标、轮毂盖等

Car accessories coating production line  
Apply to: automobile plastic parts, logo, direction indicator, wheel hub cover, etc

### 前处理设备

#### PRETREATMENT EQUIPMENT



#### 优势:

- ◆ 废气零排放, 高效节能减排
- ◆ 冷凝免排专利技术 (ZL202221994613.8)
- ◆ 水泵防泄漏设计, 维护便捷
- ◆ 自动监测加药系统, 运行更可靠

#### Advantage:

- ◆ Zero exhaust gas emission for energy saving and emission reduction
- ◆ Patented condensate non-discharge design (ZL202221994613.8)
- ◆ Leak-proof pump design for convenient maintenance
- ◆ Automatic monitoring and chemical dosing system

### 漆渣处理设备

#### PAINT SLAG TREATMENT EQUIPMENT



#### 优势:

- ◆ 专利连续自动刮渣技术 (ZL202320750767.0), 提高刮渣精度与效率, 减少工序及能耗
- ◆ 淤渣含水率低, 增强除臭与换水效率; 设备维护方便, 运行稳定
- ◆ 结构精巧, 固液分离优良; 配备排风装置, 使用便捷

#### Advantage:

- ◆ Patented continuous automatic scraper (ZL202320750767.0) improves scraping accuracy and efficiency while reducing processes and energy consumption
- ◆ Scum has low moisture content, enhancing deodorization and water exchange efficiency. The equipment is easy to maintain and runs stably
- ◆ Compact structure with excellent solid-liquid separation. Equipped with an exhaust system for convenient operation

循环供风设备

CIRCULATING AIR SUPPLY EQUIPMENT



优势:

- ◆ 控制系统可采用集中控制或单台独立控制:集中控制便于操作与管理,单独控制可按需灵活选择,在合理利用资源的同时减少能耗、降低运行成本。

Advantage:

- ◆ The control system can be either centralized or independent for each unit: centralized control facilitates easy operation and management, while independent control allows on-demand selection, enabling rational resource utilization, reducing energy consumption, and lowering operating costs.



机器人喷涂

ROBOTIC SPRAYING



优势:

- ◆ 机器人喷头在线喷涂,自动化程度高,实现节能减排
- ◆ 喷涂精确、均匀,可根据工件变化自动调整喷枪位置
- ◆ 360°全方位无死角喷涂,设备正常运行时间长,显著降低运作成本
- ◆ 运行平稳、速度快、效率高,且易于操作与维护
- ◆ 节省人工,占地空间小

Advantage:

- ◆ Robotic nozzle with online spraying, high automation, enabling energy saving and emission reduction
- ◆ Precise and uniform spraying, with automatic adjustment of nozzle position according to workpiece variation
- ◆ 360° full-coverage spraying with no dead angles; long trouble-free operation time significantly reduces operating costs
- ◆ Stable operation, high speed, and high efficiency, combined with easy operation and maintenance
- ◆ Labor-saving and compact footprint



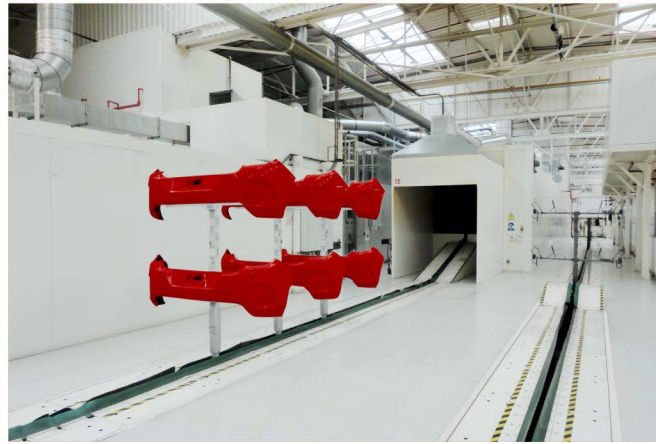
除尘房

DUST REMOVAL ROOM



输送设备

CONVEYOR DEVICE



喷粉设备

POWDER SPRAYING EQUIPMENT



供漆房

PAINT SUPPLY ROOM



无尘隔房

DUST-FREE COMPARTMENT



机器人转件

ROBOT TRANSFER



科技创新体系  
Technology Innovation System



# 工业装备智能涂装系列

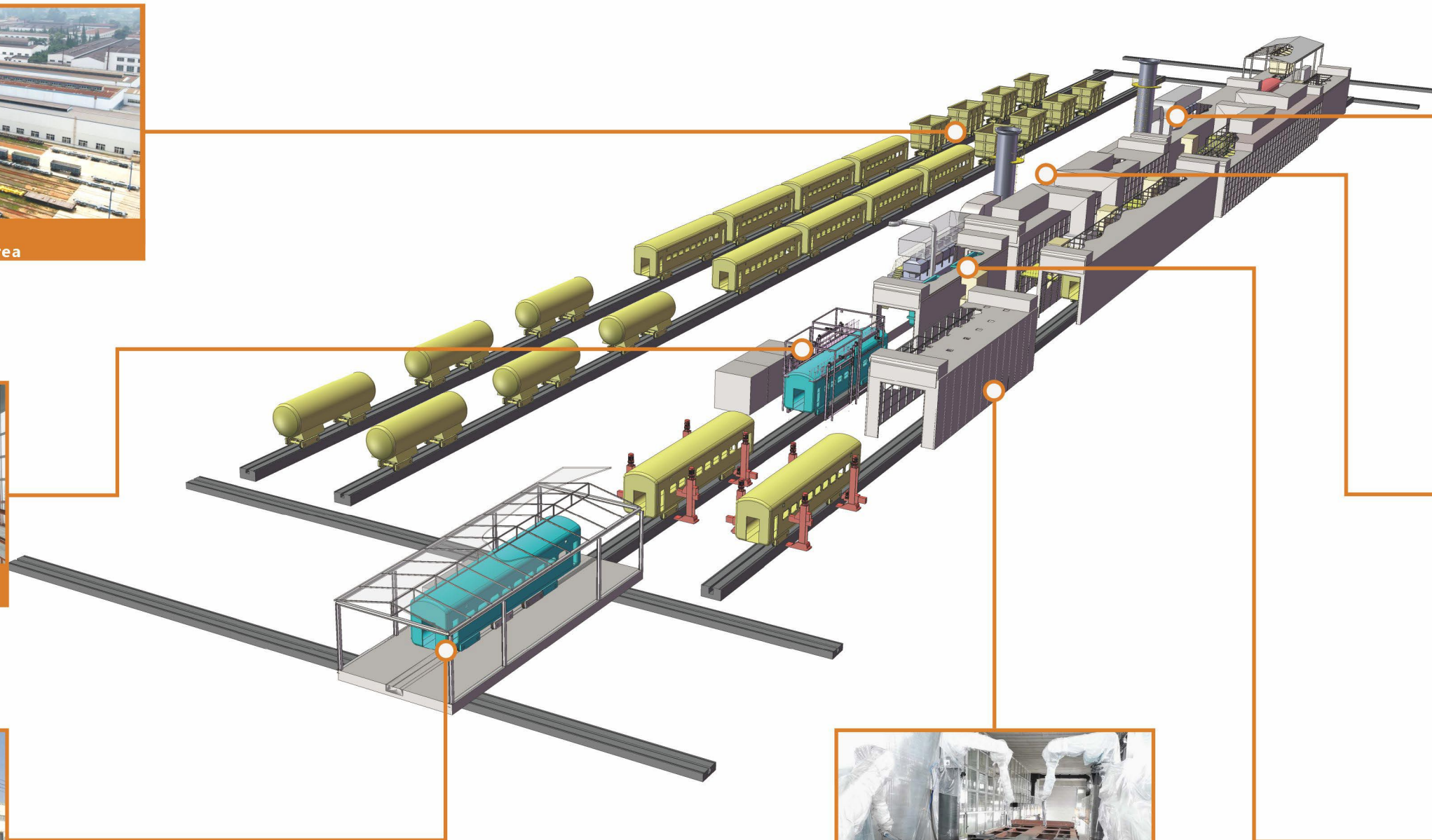
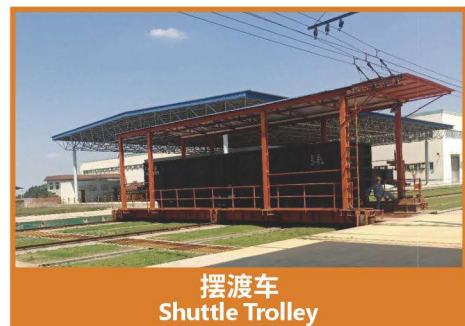
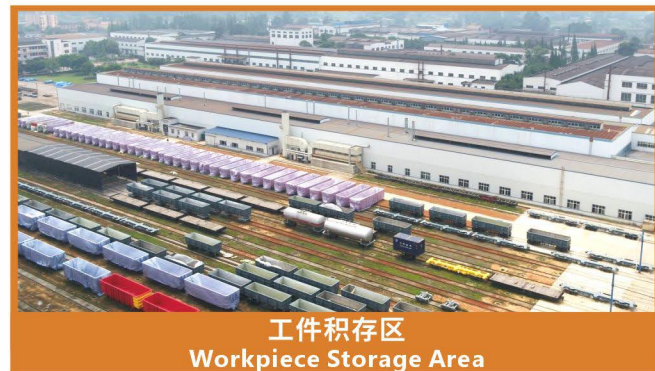
Industrial equipment intelligent coating series



科技创新体系  
Technology Innovation System

部分合作伙伴/Partial partners





### 工业装备涂装生产线

适用于：国铁敞车、平车、罐车、SQ6型专用车、棚车、粮食车等

Industrial equipment coating production line

Applicable to: China Railway open top cars, flat cars, tank cars, SQ6 special vehicles, shed cars, grain trucks, etc

## 手动喷房

### MANUAL SPRAY BOOTH



#### 优势:

- ◆ 无需废水处理,采用干式过滤系统,运行成本降低30%以上
- ◆ 上送下回风设计,不产生涡流,壁板不易污染
- ◆ 重型输送系统,运输轨迹合理,定位精确
- ◆ 灯光布置合理,保证光照度,整车无死角

#### Advantage:

- ◆ No wastewater treatment required; dry filtration system reduces operating costs by more than 30%
- ◆ Upward supply and downward return airflow design eliminates vortices, keeping wall panels less prone to contamination
- ◆ Heavy-duty conveyor system with rational transport path and precise positioning
- ◆ Well-arranged lighting ensures uniform illumination with no dead corners on the entire vehicle

## 烘干房

### DRYING ROOM



#### 优势:

- ◆ 封闭式炉体,减少门洞漏热,确保漆雾不外泄
- ◆ 间接燃烧加热,安全可靠,质量有保障
- ◆ 配置可燃气体检测装置,防止燃气泄漏
- ◆ 重型自动输送系统,定位精确

#### Advantage:

- ◆ Enclosed furnace body reduces heat loss through door openings and ensures no paint mist leakage
- ◆ Indirect combustion heating provides safety, reliability, and guaranteed quality
- ◆ Equipped with a combustible gas detection device to prevent gas leakage
- ◆ Heavy-duty automatic conveyor system with precise positioning

## 机器人喷房

### ROBOT SPRAY BOOTH



#### 优势:

- ◆ 干式过滤系统, 无需废水处理, 通风风压小, 能耗降低30%以上
- ◆ 上送下回风设计, 无涡流、无乱流, 壁板不易污染
- ◆ 重型输送系统, 运输轨迹合理, 定位精确; 油漆覆盖良好, 废气处理量小
- ◆ 加热与制冷系统采用联控互锁形式, 安全可靠
- ◆ 玻璃幕墙采光良好, 灯光布置合理, 照度均匀, 整车无死角, 便于观察

#### Advantage:

- ◆ Dry filtration system requires no wastewater treatment, with low ventilation and air pressure, reducing energy consumption by more than 30%
- ◆ Upward supply and downward return airflow design eliminates vortices and turbulence, keeping wall panels less prone to contamination
- ◆ Heavy-duty conveyor system with rational transport path and precise positioning; good paint coverage and low exhaust gas volume
- ◆ Heating and cooling systems adopt interlocked control for safe and reliable operation
- ◆ Glass curtain wall provides good natural lighting; well-arranged artificial lighting ensures uniform illumination with no dead corners on the entire vehicle, facilitating easy observation

## 输送系统

### CONVEYOR SYSTEM



#### 优势:

- ◆ 轨道式重型设备智能输送装置, 精确定位、精准过渡
- ◆ 锁钩式自动导入及分离
- ◆ 配置防尘防漆渣及过载保护装置
- ◆ 光电感应与多重系统保护

#### Advantage:

- ◆ Intelligent track-type heavy equipment conveyor with precise positioning and accurate transition
- ◆ Hook-type automatic loading and unloading
- ◆ Equipped with dust/paint slag protection and overload protection devices
- ◆ Photoelectric sensing with multiple system protections





# 木器(乐器及家具)智能涂装系列

Wood (musical instrument and furniture) coating production line



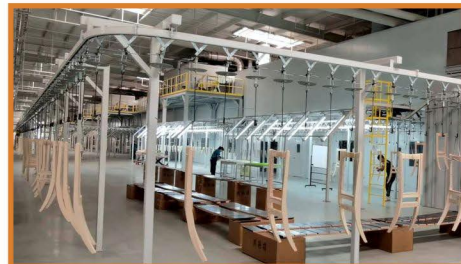
科技创新体系  
Technology Innovation System

## 部分合作伙伴/Partial partners





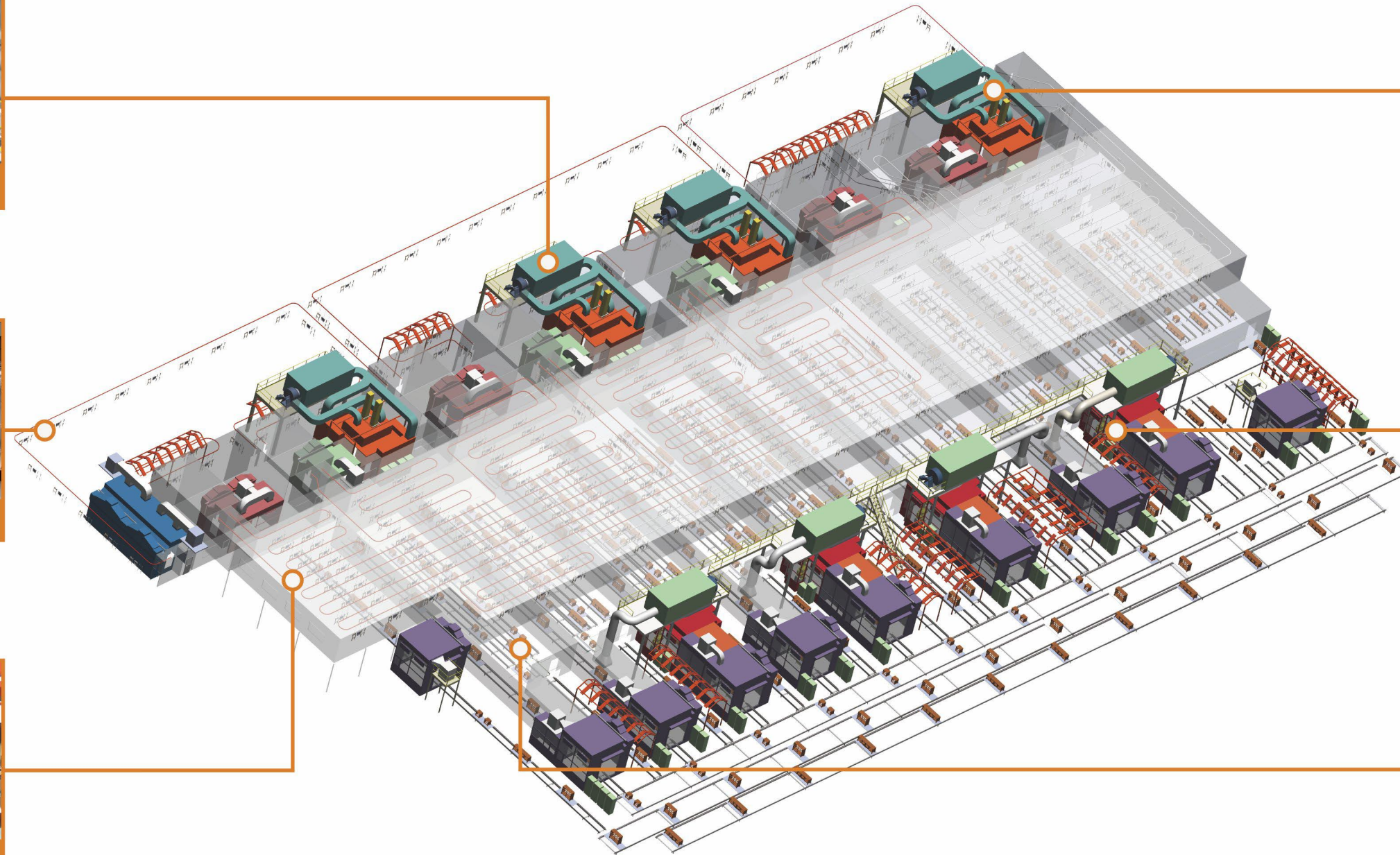
自循环供风  
Recirculating Air Supply



悬挂系统  
Overhead Hanging System



吊挂线流平干燥区  
Overhead Conveying Line Flash Off And Drying Area



静电喷房  
Electrostatic Spraying Room



机器人喷房  
Robotic Spray Booth



滑撬式输送系统  
Skid Conveyor System

### 木器(乐器及家具)涂装生产线

适用于: 整装产品、异型工件、组装类的柜子、异形桌面等

Wood (musical instrument and furniture) coating production line

Apply to: completed products, abnormal shape workpieces, assembly cabinets, abnormal shape desktop, etc

## 静电喷房

### ELECTROSTATIC SPRAYING ROOM



#### 优势:

- ◆ 精确供油系统, 减少过喷, 上漆率高, 节省涂料40%以上
- ◆ 上漆细密均匀, 品质稳定, 涂料附着力提高95%以上
- ◆ 操作简单, 环保节能, 清理简便, 生产效率高

#### Advantage:

- ◆ Precise oil supply system reduces overspray and achieves high transfer efficiency, saving coating material by more than 40%
- ◆ Fine, uniform coating with stable quality improves paint adhesion by over 95%
- ◆ Simple operation, energy-saving, eco-friendly, easy to clean, and highly productive

## 机器人喷房

### ROBOT SPRAY BOOTH



#### 优势:

- ◆ 机器人替代人工, 自动化程度高, 实现节能减排
- ◆ 精准喷涂, 涂层均匀, 精度高、效率高、产品合格率高
- ◆ 360°全方位无死角喷涂, 设备正常运行时间长, 显著降低运营成本
- ◆ 运行平稳、速度快, 易于操作和维护, 节省人工, 占地空间小

#### Advantage:

- ◆ Robots replace manual labor with high automation, enabling energy saving and emission reduction
- ◆ Precise spraying with uniform coating, high accuracy, high efficiency, and high product qualification rate
- ◆ 360° full-coverage spraying with no dead angles; long equipment uptime significantly reduces operating costs
- ◆ Stable and fast operation, easy to operate and maintain, labor-saving, and compact footprint

## 微波干燥炉

### MICROWAVE DRYING OVEN



#### 优势:

- ◆ 采用紫外线固化与微波加热技术
- ◆ 设备可单独使用,也可配套自动喷涂线使用
- ◆ 光照射角度可调节,无照射死角
- ◆ 适用各类涂装产品,缩短工艺时间,效率提高3-4倍,减少场地占用

#### Advantage:

- ◆ Utilizes UV curing and microwave heating technology
- ◆ The equipment can be used independently or integrated with automatic spraying lines
- ◆ Adjustable light irradiation angle with no dead corners
- ◆ Suitable for various coating products; shortens process time, increases efficiency by 3-4 times, and reduces floor space occupancy

## 柔性多通道输送系统

### FLEXIBLE MULTI-CHANNEL CONVEYING SYSTEM



#### 优势:

- ◆ 内置RFID专用感应芯片的托盘,轻量化设计,运行噪音小,绿色环保
- ◆ 多条输送线并排设置且协同输送,大幅减小生产线体积,节约成本
- ◆ 多条输送线与平移机组联动,替代人工搬运,减少劳动力,提高生产效率
- ◆ PLC智能控制系统,自动化程度高,可满足不同工艺要求,占地面积小,生产适应性强

#### Advantage:

- ◆ Built-in RFID chip-equipped pallet, lightweight design, low noise operation, and environmentally friendly
- ◆ Multiple parallel conveying lines work in coordination, significantly reducing the overall footprint and saving costs
- ◆ Multiple conveyor lines integrated with transfer units replace manual handling, reducing labor and increasing production efficiency
- ◆ PLC intelligent control system with high automation; meets various process requirements, occupies small space, and offers strong production adaptability

## 流平干燥区

### FLASH OFF DRY AREA



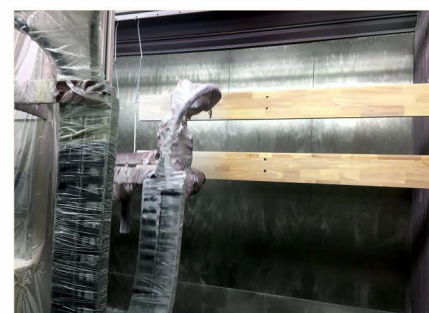
## 木器喷漆房外观

### APPEARANCE OF WOOD PAINTING ROOM



## 往复机喷涂

### RECIPROCATOR SPRAYING



## 中央电控系统

### CENTRAL ELECTRICAL CONTROL SYSTEM



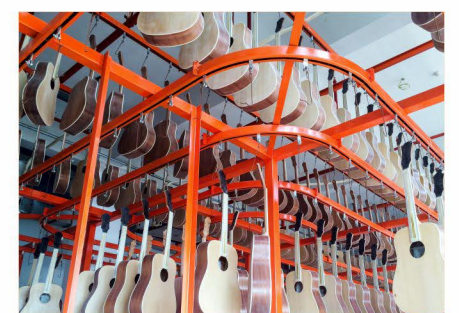
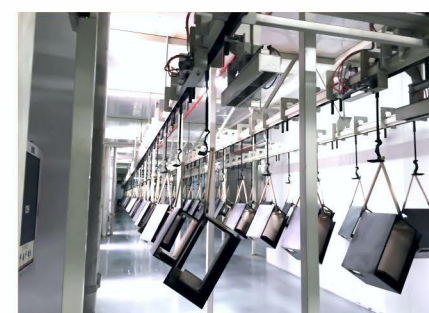
## 无尘隔房工程

### DUST-FREE COMPARTMENT PROJECT



## 悬挂系统

### OVERHEAD HANGING SYSTEM





# 家电及炊具智能涂装系列

Intelligent coating series for household appliances and cookware

涂装 COATING  
装备 EQUIPMENT



科技创新体系  
Technology Innovation System

部分合作伙伴/Partial partners





前处理  
Pretreatment



机器人转件  
Robotic Transfer



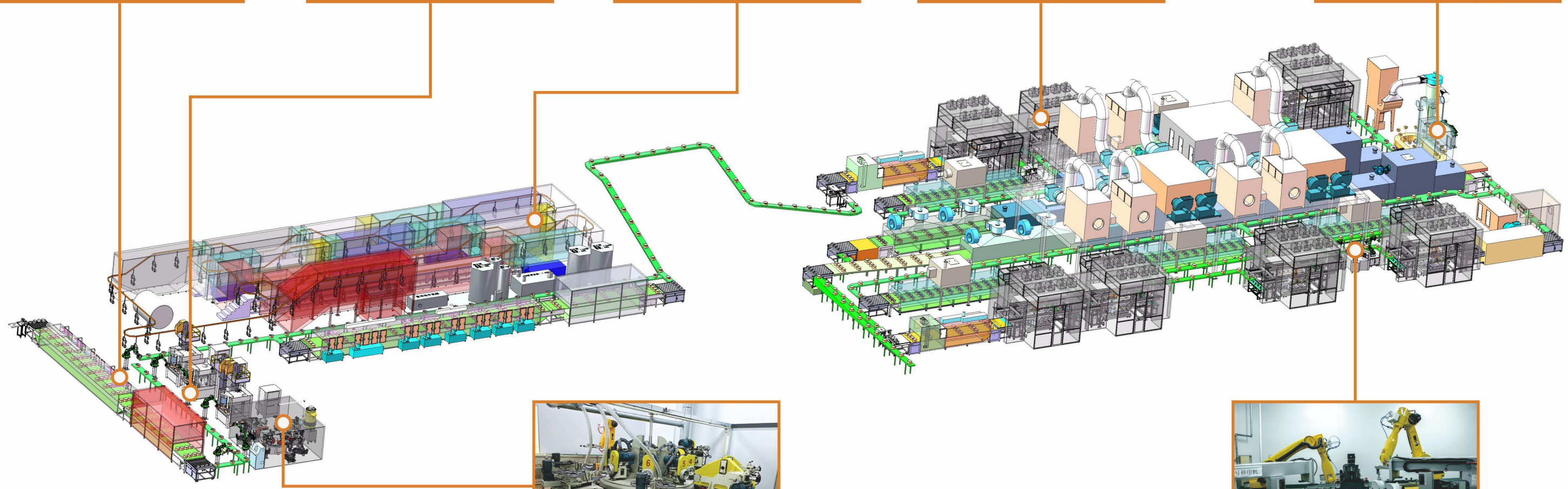
游浸式阳极氧化线  
Dipping Type Anodizing Line



机器人喷房  
Robotic Spray Booth



静电粉末喷房  
Electrostatic Powder Spray Booth



自动抛光区  
Automatic Polishing Area



自动移印区  
Automatic Pad Printing Area

### 家电及炊具涂装生产线

适用于:电饭煲内锅、家用电器、炊具等

Home Appliances and cooking utensils painting production line  
Apply to: Rice cooker inner pot, home appliances, cooking utensils, etc

## 前处理及水份烘干设备

### PRE TREATMENT AND MOISTURE DRYING EQUIPMENT



#### 优势:

- ◆ 废气零排放, 高效节能减排
- ◆ 冷凝免排专利技术 (ZL202221994613.8)
- ◆ 水泵防泄漏设计, 维护便捷
- ◆ 自动监测加药系统, 运行更可靠
- ◆ 设备配备热泵除湿干燥系统, 无废气外排, 实现环保零排放; 干燥快速, 维修成本低

#### Advantage:

- ◆ Zero exhaust gas emission for energy saving and emission reduction
- ◆ Patented condensate non-discharge design (ZL202221994613.8)
- ◆ Leak-proof pump design for convenient maintenance
- ◆ Automatic monitoring and chemical dosing system
- ◆ The equipment features a heat pump dehumidification and drying system with no exhaust gas emission, achieving eco-friendly zero emissions, fast drying, and low maintenance costs

## 硬质氧化线

### HARD ANODIZING LINE



#### 优势:

- ◆ 出槽时采用倾斜设计, 排水顺畅、彻底, 减少窜液
- ◆ 缸边抽气, 利于酸气、蒸气及时排出, 实现节能减排
- ◆ 操作简单, 采用IGBT控制, 达到最佳节能效果
- ◆ 自动化程度高, 热损少, 使用寿命长

#### Advantage:

- ◆ Tilted design when exiting the tank ensures smooth and complete drainage, reducing liquid cross-contamination
- ◆ Edge suction removes acid gas and steam promptly, achieving energy saving and emission reduction
- ◆ Simple operation with IGBT control for optimal energy efficiency
- ◆ High automation, low heat loss, and long service life



## 桥式烘干炉

### BRIDGE DRYING FURNACE



#### 优势:

- ◆ 全桥式炉体设计, 有效减少热量泄漏
- ◆ 直接燃烧加热, 节省20%~30%热能损失, 升温速度快
- ◆ 保温效果好, 操作简单, 维护方便, 自动化程度高

#### Advantage:

- ◆ Full-bridge furnace body design effectively reduces heat leakage
- ◆ Direct combustion heating saves 20%-30% of heat loss and achieves fast temperature rise
- ◆ Excellent heat retention, simple operation, easy maintenance, and high automation

## 高温固化炉

### HIGH TEMPERATURE CURING OVEN



#### 优势:

- ◆ 线速度无级可调, 自动恒温控制, 节约能耗
- ◆ 燃烧器与高温混风扇互锁保护, 安全可靠
- ◆ 耐高温插入式热风循环风机, 结构紧凑, 无漏热
- ◆ 炉温曲线稳定, 控制精度达 $\pm 3^{\circ}\text{C}$ 。

#### Advantage:

- ◆ Stepless adjustable line speed, automatic constant temperature control, and energy saving
- ◆ Interlock protection between burner and high-temperature mixing fan for safety
- ◆ High-temperature resistant plug-in hot air circulating fan with compact structure and no heat leakage
- ◆ Stable furnace temperature curve with control accuracy of  $\pm 3^{\circ}\text{C}$

## 机器人喷房

### ROBOTIC SPRAY BOOTH



#### 优势:

- ◆ 机器人替代人工, 自动化喷涂, 涂层均匀、精度高、效率高、合格率高, 节能环保
- ◆ 360°全方位无死角喷涂, 设备运行时间长, 大幅降低运作成本
- ◆ 运行平稳快速, 操作维护简便, 节省人工, 占地小

#### Advantage:

- ◆ Robots replace manual labor for automated spraying, delivering uniform coating with high precision, efficiency, and qualification rate, while saving energy and reducing emissions
- ◆ 360° dead-angle-free spraying with long equipment uptime greatly reduces operating costs
- ◆ Stable, fast operation with easy maintenance, labor-saving, and small footprint

## 自动除尘房

### AUTOMATIC DUST REMOVAL ROOM



#### 优势:

- ◆ 除尘设备可去除工件表面吸附的尘埃, 确保喷涂前洁净度, 有效提高喷涂良品率。

#### Advantage:

- ◆ The dust removal equipment removes dust adhering to the workpiece surface, ensures pre-spraying cleanliness, and effectively improves the coating yield.





# 五金智能涂装系列

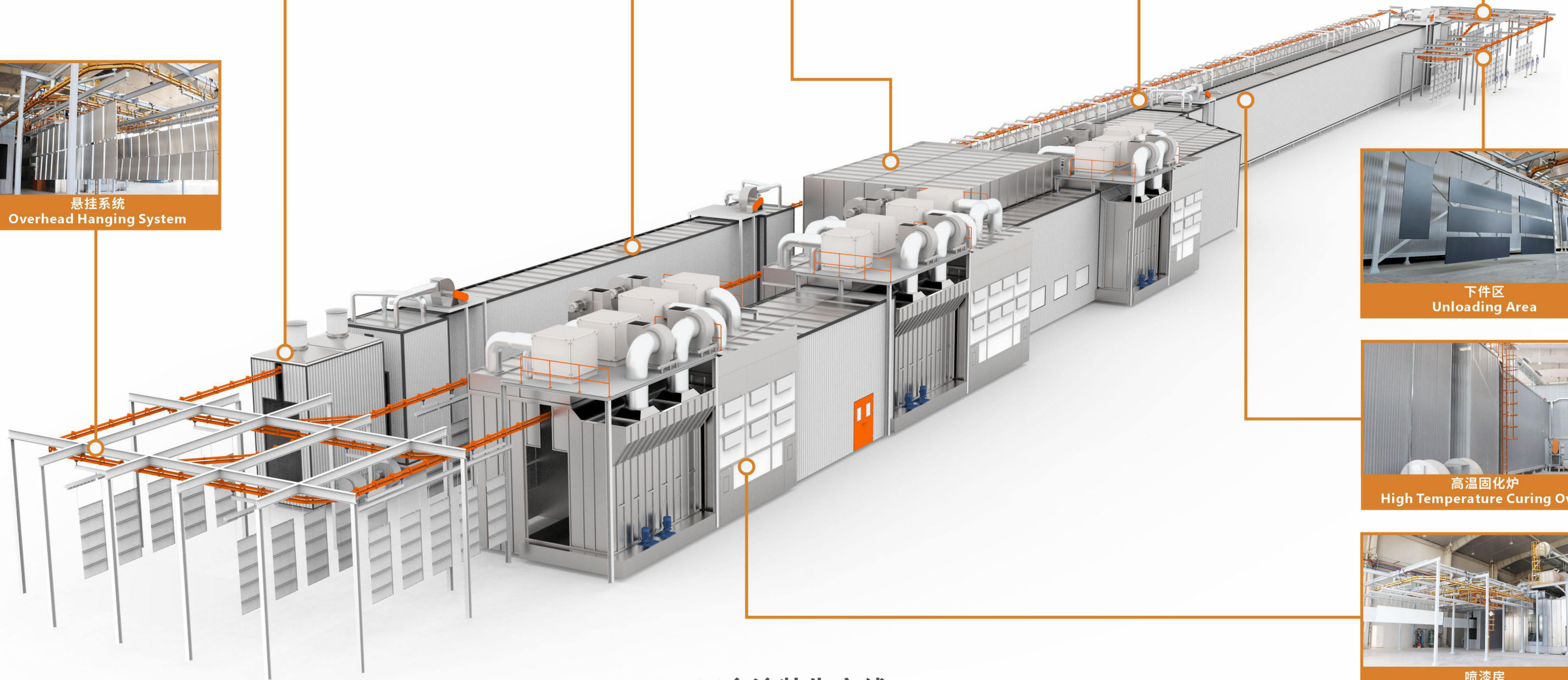
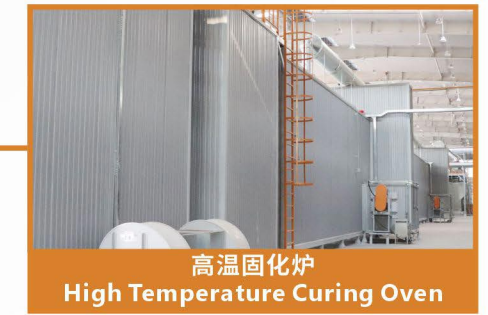
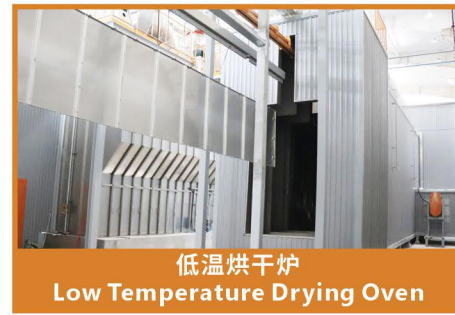
Hardware intelligent coating series



科技创新体系  
Technology Innovation System

## 部分合作伙伴/Partial partners





### 五金涂装生产线

适用于:机箱、机柜、机箱组件、机柜组件、钣金件等

Hardware coating production line

Apply to:chassis, cabinets, chassis components, cabinet components, sheet metal parts,etc

## 喷淋式前处理

### SPRAY TYPE PRETREATMENT



#### 优势:

- ◆ 立式水泵防泄漏设计, 维护便捷
- ◆ 自动监测加药系统, 节省药液与化学药剂, 运行更可靠
- ◆ 板式换热器, 换热效率高, 省电、省投资

#### Advantage:

- ◆ Vertical pump with leak-proof design for easy maintenance
- ◆ Automatic monitoring and dosing system saves chemical solution and chemicals, ensuring more reliable operation
- ◆ Plate heat exchanger with high heat transfer efficiency saves electricity and reduces investment

## 龙门式前处理

### GANTRY TYPE PRETREATMENT



#### 优势:

- ◆ 出槽时采用倾斜设计, 排水顺畅、彻底, 减少窜液
- ◆ 缸边抽气, 利于酸气、蒸气及时排出, 实现节能减排
- ◆ 操作简单, 采用IGBT控制, 达到最佳节能效果
- ◆ 自动化程度高, 热损少, 使用寿命长
- ◆ 封闭式设计, 减少环境污染

#### Advantage:

- ◆ Tilted design when exiting the tank ensures smooth and complete drainage, reducing liquid cross-contamination
- ◆ Edge suction removes acid gas and steam promptly, achieving energy saving and emission reduction
- ◆ Simple operation with IGBT control for optimal energy efficiency
- ◆ High automation, low heat loss, and long service life
- ◆ Enclosed design reduces environmental pollution

## 悬挂系统

### SUSPENSION SYSTEM



#### 优势:

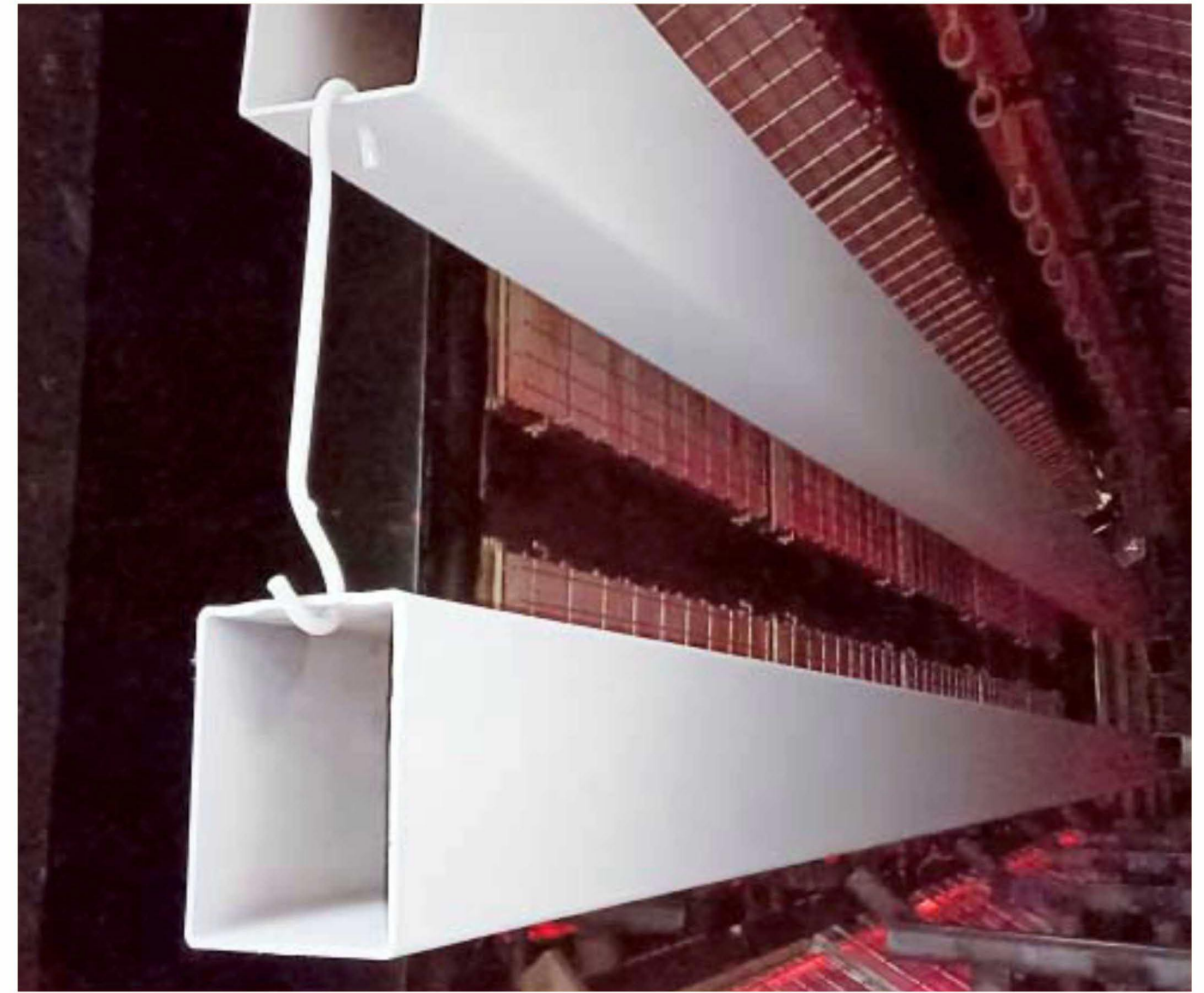
- ◆ 整条喷涂线可量身定做, 结构紧凑、操作方便、外形美观, 便于参观展示
- ◆ 自动化程度高, 减少人力投入; 可视化标识让管理更简单
- ◆ 采用吊挂式运输链条, 运行平稳, 可实现双面同时喷涂, 效率高
- ◆ 采用计算机触摸屏集中控制, 支持分点控制及远程控制

#### Advantage:

- ◆ The entire spraying line can be customized, featuring a compact structure, easy operation, attractive appearance, and is suitable for demonstration viewing
- ◆ High automation reduces labor; visual management signage simplifies operation control
- ◆ Overhead conveyor chain runs smoothly, enabling double-sided simultaneous spraying for high efficiency
- ◆ Computerized touchscreen centralized control supports point-by-point control and remote operation.

## 燃气催化红外加热炉

### GAS CATALYTIC INFRARED HEATING FURNACE



#### 优势:

- ◆ 设备采用红外线固化及燃气加热技术, 可单独使用或配套自动喷涂线; 光照射角度可调, 无照射死角; 适用于各类涂装产品, 缩短工艺时间, 效率提高3-4倍, 并减少场地占用。

#### Advantage:

- ◆ The equipment adopts infrared curing and gas heating technology, can be used independently or with automatic spraying lines, features an adjustable light angle with no dead corners, is suitable for various coating products, shortens process time, increases efficiency by 3-4 times, and reduces floor space occupancy.

# 绿色化理念

GREEN CONCEPT



## 树立绿色化理念 构建企业治理现代化体系

推动企业持续能源低碳转型,打造完整的生产线闭环

Establishing a Green Concept and Building a Modern System of Corporate Governance  
Promote sustainable energy and low-carbon transformation of enterprises, and create a complete closed-loop production line



## 践行绿色发展 节能环保

Practice green development and energy conservation and environmental protection

GREEN MINIALIZATION

绿色发展体系  
Green development system

## RTO废气处理设备

### RTO WASTE GAS TREATMENT EQUIPMENT

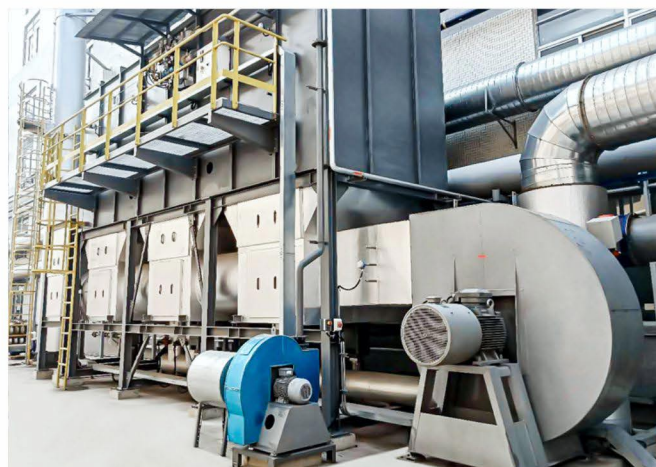


#### 优势:

- ◆ RTO是一种高效有机废气治理设备，与传统催化燃烧及直燃式热氧化炉（TO）相比，具有热效率高（≥95%）、运行成本低、可处理大流量中低浓度废气等优势；当废气浓度较高时，还可进行二次余热回收，进一步降低生产运营成本。

#### Advantage:

- ◆ As a highly efficient organic waste gas treatment device, RTO offers advantages over traditional catalytic combustion and direct-fired thermal oxidizer (TO), including high thermal efficiency (≥95%), low operating costs, and the ability to handle large volumes of medium-to-low concentration waste gas; when the concentration is higher, secondary waste heat recovery can further reduce production and operating costs.



## RCO废气处理设备

### RCO WASTE GAS TREATMENT EQUIPMENT



#### 优势:

- ◆ 适用于废气中被吸收成分浓度低、且易与吸收剂反应的体系，具备吸收效果好、阻力小、不易结垢堵塞、设备投资少等优点。

#### Advantage:

- ◆ Suitable for waste gas systems where the absorbate concentration is low and reacts easily with the absorbent, offering advantages including high absorption efficiency, low resistance, resistance to scaling and clogging, and low equipment investment.

废水处理设备

WASTEWATER TREATMENT EQUIPMENT



优势:

- ◆ 设备节省占地面积, 提高处理效率
- ◆ 常温蒸发, 安全性高, 能耗低
- ◆ 全密闭系统, 无废气排放
- ◆ 维护成本极低, 无需更换耗材
- ◆ 操作简便, 设备集成自动控制

Advantage:

- ◆ The equipment saves floor space and improves treatment efficiency
- ◆ Ambient temperature evaporation offers high safety and low energy consumption
- ◆ Fully enclosed system with zero exhaust gas emission
- ◆ Extremely low maintenance cost with no consumables required
- ◆ Simple operation with integrated automatic control

喷淋塔+干式过滤+活性炭废气处理系统

SPRAY TOWER+DRY FILTRATION+ACTIVE CARBON WASTE GAS TREATMENT SYSTEM



优势:

- ◆ 本系统适用于废气中被吸收成分浓度低、且易与吸收剂反应的体系。具有吸收效果好、阻力小、不易结垢堵塞、设备投资少等优点。

Advantage:

- ◆ This system is suitable for waste gas systems where the component to be absorbed is at a low concentration and readily reacts with the absorbent. It offers advantages such as high absorption efficiency, low resistance, low risk of scaling and clogging, and low equipment investment.



# 合作共赢

## WIN-WIN COOPERATION

多年来，广东创智为客户提供非标定制化涂装生产线及配套表面处理设备，与众多国内外知名品牌建立了长期合作关系。公司不懈追求卓越品质，用心打造优质服务。产品广泛应用于汽车、轨道交通、家具、乐器、炊具、家电、五金、航天航空、工业装备等行业，成为深受用户信赖的合作商。

For many years, Guangdong Chuangzhi has been providing customers with non-standard customized coating production lines and related surface treatment equipment, establishing long-term partnerships with numerous well-known domestic and international brands. The company continuously pursues outstanding quality and delivers excellent service. Its products are widely used in automotive, rail transit, furniture, musical instruments, cookware, home appliances, hardware, aerospace, and industrial equipment industries, making Chuangzhi a trusted partner for customers.



# 智造未来

## INTELLIGENT MANUFACTURING FOR THE FUTURE

### 一、技术提质·智能增效

- 攻坚机器人喷涂、AI 智能涂装、数智孪生核心技术
- 全流程质量追溯，严苛品控保障高端品质
- 节能降碳、智能供漆、无人产线，实现降本增效

### 二、广货出海·品牌致远

- 深耕国内市场，服务行业龙头，树立标杆案例
- 产品远销全球多国，本土化服务拓展国际市场
- 以专利技术与全周期服务，打造广东智造名片

### 三、聚力高质量·共筑新引擎

- 攻克核心技术，补齐关键短板
- 加快数智转型，培育新质生产力
- 坚持绿色发展，强化产业链韧性
- 汇聚人才与资源，夯实制造业根基

### 1. Technological improvement and intelligent efficiency enhancement

- Core technologies of breakthrough robot spraying, AI intelligent coating, and digital twin
- Full process quality traceability, strict quality control to ensure high-end quality
- Energy saving and carbon reduction, intelligent paint supply, unmanned production line, achieving cost reduction and efficiency improvement

### 2. Guanghuo Going Global and Brand Expansion

- Deeply cultivating the domestic market, serving industry leaders, and setting benchmark cases
- Our products are exported to multiple countries around the world, and our localized services expand our international market
- Using patented technology and full cycle services to create Guangdong's smart manufacturing business card

### 3. Gathering High Quality and Building a New Engine Together

- Overcome core technologies and fill in key gaps
- Accelerate the transformation of digital intelligence and cultivate new quality productivity
- Adhere to green development and strengthen the resilience of the industrial chain
- Gathering talents and resources, consolidating the foundation of the manufacturing industry