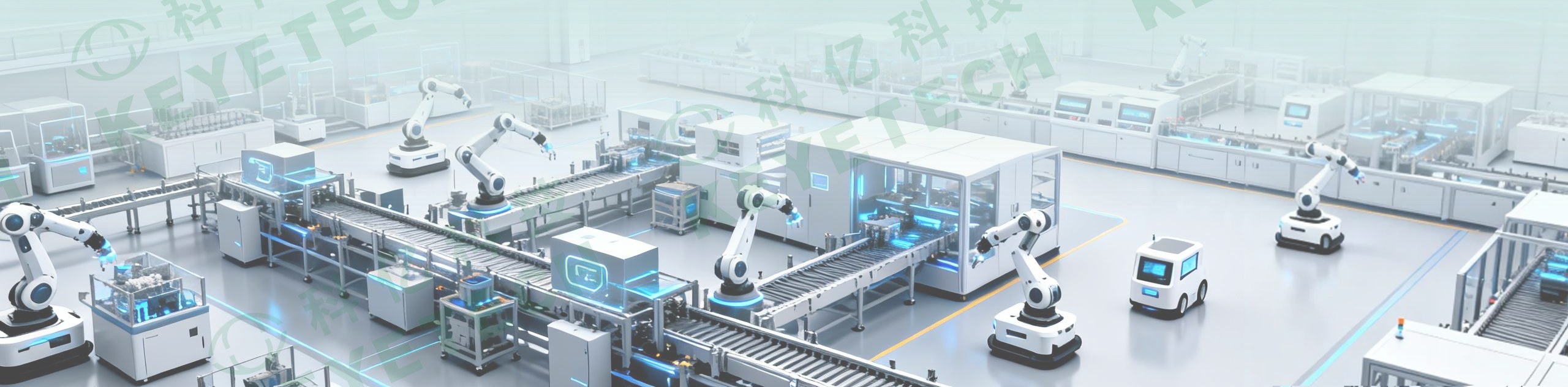


Anhui Keye Intelligent Technology Co., Ltd

AI Vision Inspection System and Intelligent Equipment Manufacturer



CONTENTS

01

**Company
Introduction**

02

**Product
Introduction**

03

**After-sales
Service**

01

Company Introduction





Company Introduction



Anhui Keye Intelligent Technology Co., Ltd. is a national high-tech enterprise focusing on the R&D and application of AI technology. We are deeply committed to the research and development of AI vision inspection and automation production, providing AI-powered quality control solutions and equipments for industrial and agricultural products, as well as automation production and AI system solutions for smart manufacturing. Our products are landing nationwide and exported to 50+ countries globally.





Develop History

2011

Founded in Hefei

2020

-New Key
Vision
-New Vision-AI
Vision

2021

-Series A Financing
-Hefei Angel Investment
High-tech Industrial
Investment

2022

-Series A+ Financing
-Investment by Jiangsu
Yida Capital

2024

-National-level "Little Giant"
Enterprise
-Headquarters Base
Completed and Put into
Operation

2025

KEYE_Easy AI_V1.0
Fully Self-developed System
Officially Launched

2025-2030

AI changes life

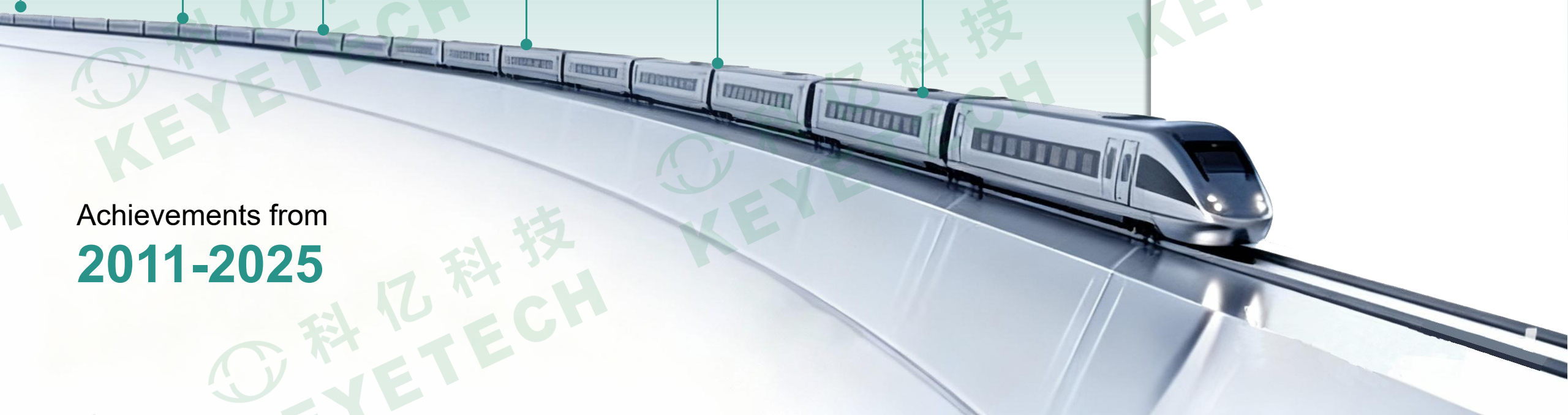


AI



Automation

Achievements from
2011-2025





Company Vision & Mission

AI Changes Life

Integrate AI into every work and life scenario, and let intelligent machines become human's loyal partners

Leader

AI Vision Inspection Area

Promoter

AI+ robot arm intelligent manufacturing





Core R&D Team Members



Dr. Yan Tianxin (CEO)

Expert in Vision System
Architecture and System Control



Dr. Tang Ling

Expert in Optoelectromechanical
Technology and System Integration



Dr. Zheng Zhigang

Expert in Pattern Recognition and
Intelligent System Architecture



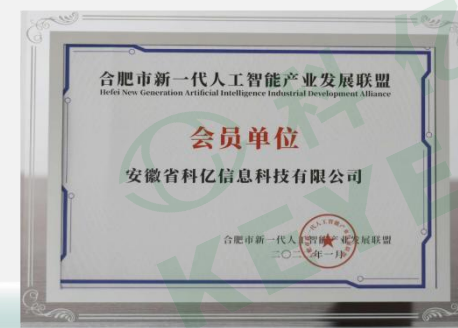
Dr. Huang Wei

Senior Product Line Expert in
Machine Vision technology



Honors

- 2020 National High-Tech Enterprise
- 2020 First Major Technical Equipment in Anhui Province
- 2021 Technology-Based Small and Medium Enterprise
- 2021 Hefei High-Growth Seed Enterprise
- Anhui First Certified Company for AI Vision Inspection Technology
- 2022“Jianghuai Silicon Valley” Innovation and Entrepreneurship Team
- 2022 Anhui High-Tech Zone Deep Tech Enterprise
- 2023 Anhui “Specialized, Sophisticated, Unique, New”SME
- 2023 Anhui Big Data Enterprise
- 2023 High-Tech Zone Gazelle Enterprise
- 2024 Hefei Technical Center
- 2024 National “Little Giant” Enterprise





Patents



70+ patents(24 invention patents, 28 utility new models, 19 software copyrights, and 4 appearance design)

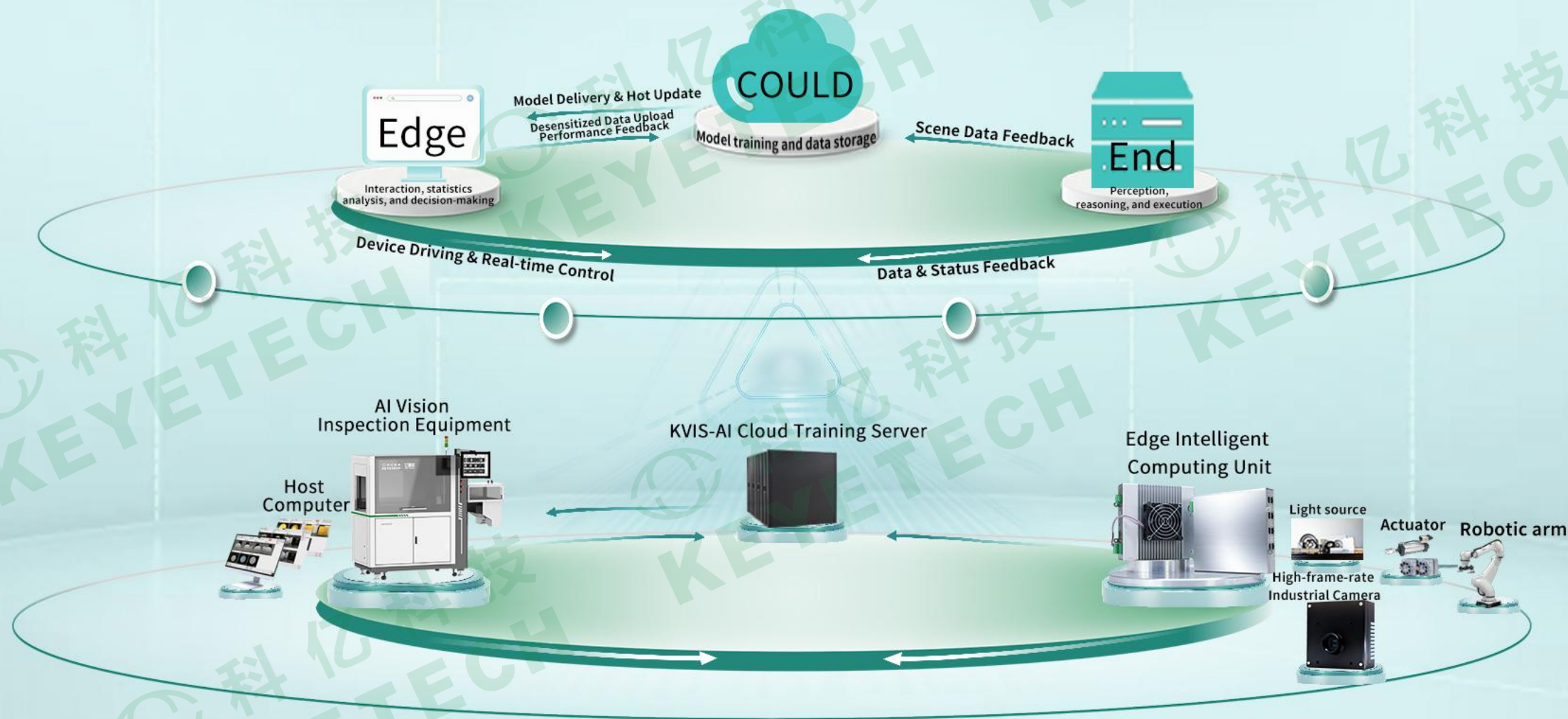
02

Product





AI Vision System—KEYE_EasyAI_V1.0





Self-Developed Core Part — Cloud Training



KVIS-AI Cloud Training Server

- Cloud Platform: Private Cloud Service Edition
- Cloud Platform: Stand-alone Edition



AI Algorithm Library, Massive Models

- Image Classification
- Defect Segmentation
- Object Detection
- Geometric Positioning





Self-Developed Core Part — End Perception



AI-powered Computer

- Powerful Computing Power: 32 TOPS / 70 TOPS
- Processing Capacity: 500–1,000 frames/s
- Operating System: Linux OS
- Chip Type: NPU Chip



Self-developed Industrial Camera

- Line Scan Cameras: 4K / 8K
- Area Scan Cameras: 1.6MP / 2MP / 3MP / 5MP
- Smart Cameras: Programmable AI Intelligent Camera System
- 3D Cameras: 10μm 3D Camera



LED Imaging Light Unit

- Line Light Source, Area Light Source, Coaxial Light Source
- Point Light Source, Spherical Light Source, Ring Light Source
- Integrating Sphere Light Source, UV Light Source



Self-developed Core Part— Edged Decision Making

科亿科技
KEYETECH



Host Computer

Responsible for status display, remote control, alarm handling, etc.

→ Embedded System

Embedded system software: stable, efficient, and easy to expand.



FPGA Control

FPGA control platform: stable, high-speed, real-time



Company Product Portfolio

AI Vision System Solutions

- Integrated AI Vision Inspection Systems
Customizable/Standard Systems
- Programmable Intelligent Camera Systems

AI Vision Equipment

- Quality Control Inspection
Industrial & Agricultural
- AI + Robot Arm
Smart Manufacturing for specific
Industries

AI Vision Core Parts: Cloud-Edge-End



AI Visual Industry Quality Control Machine



Plastic Packaging Vision Inspection

Plastic packaging inspection for pharmacy, food, beverage, condiment, dairy and other industries.



Glass Packaging Vision Inspection

Glass bottles in wine, beverage, and other industries.



Electronic Component Vision Inspection

PCBs, capacitors, sealing rubber, production equipment integration and more.



New Energy Vision Inspection

Inspection of product appearance such as burrs on polarizer slitting, appearance of battery cells, and welding point on current collectors.



AI Visual Agricultural Quality Control Machine



Vertical Sorter

Sorts granular materials such as rice, red beans, and wheat kernels.



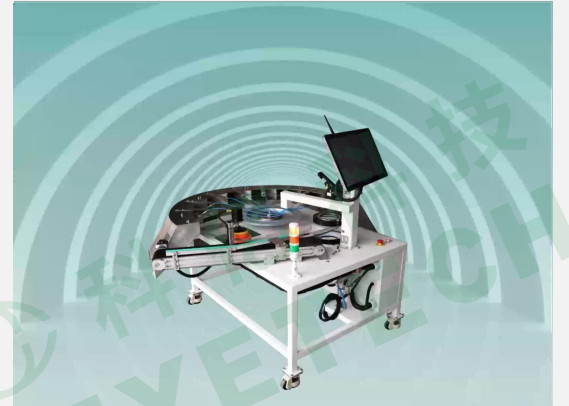
Belt Sorter

Sorts chili peppers, nuts, Chinese medicinal herbs, and renewable resources.



Quality Analyzer

Analyzes products requiring quality assessment, including grains, coffee, and plastics.

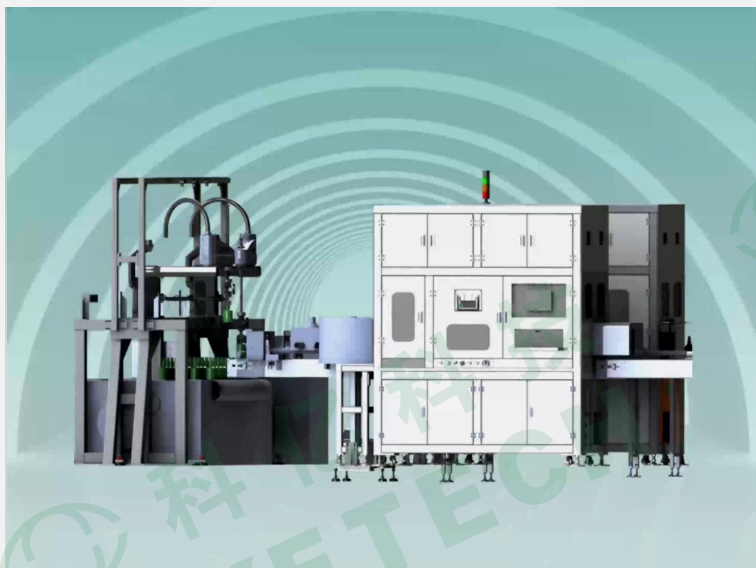


Quality Grader

Grades products requiring classification, such as walnuts and jujubes.

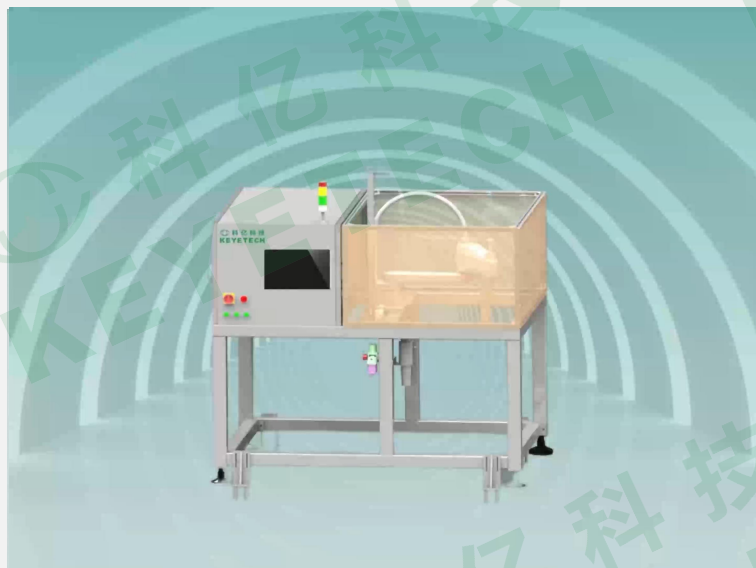


AI+ Robot Arm



Glass Bottle Grasping

Handles high-temperature incoming materials at the front end.



Common Material Grasping

Sheet materials with high requirements of precision and speed, requiring grasping for inspection.



Stacked Material Grasping

Handles irregularly oriented incoming materials, ensuring uniform orientation before feeding into the inspection system.



Benchmark Projects

Validate Product Performance Through Project Implementation

KEYETECH – Vision Inspection Solutions & Intelligent Equipment Supplier

- ◆ Project Initiation
- ◆ Innovation & R&D
- ◆ Volume Production & Quantification
- ◆ Industry Benchmark
- ◆ Project Validation
- ◆ Long-Term Operation

Food

Mengniu, Yili,
Haitian,
Lee Kum Kee

Pharmacy

Sinopharm, Tai
Chi, Yunnan
Baiyao

Daily Chemical

Unilever, P&G

Textile

SINOMACH Textile

Wine

Moutai Group,
Wuliangye

New Energy

CATL,
Gotion High-Tech

Electronic Components

Nippon Chemi-Con Corporation

Tobacco

China Tobacco
Packaging

AI Vision Inspection Machine—Customized Solution

Customized Solution Tailored to Product

KEYETECH boasts a standardized new product R&D system and strong R&D capabilities. Adhering to the principle of "Everything is Inspectable". According to customized project initiates research and discussions, designing and producing vision inspection system that meets your production requirements.



03

After-sales Service





After-sales Service

KEYETECH is committed to the development and sustainability beyond machine itself, continuously improving after-sales services and building a comprehensive service system. We go beyond traditional responsive after-sales support, dedicating to providing customers with continuous empowerment and capability building. What we deliver is not just a machine, but a complete solution that empowers our customers. Our service is characterized by our unique "Dual-Track Empowerment" model.



48 h on-site commissioning



Online Training Class



7X24 h remote maintenance



Offline Training Class



Empowering 300+ Enterprises

We hold 3-4 intensive offline training sessions every year. Through in-depth small-group offline training, we deliver hands-on core skills and practical experience.



300+ Courses Available

KEYETECH – Xiao Yi Tong – online course in Wechat App.





Global Market Network

200+

Our products reach 200+ cities and regions in China.

50+

Exported to more than 50 countries and regions worldwide.



Business Coverage

Domestic & International

Provide **Global** Technical Support

Serving Clients

3,000+

Cooperated Partners



Common Choice by 3000+ Enterprises

Choice comes from technology,
partnership comes from quality.

- 3000+ Deeply Cooperated Enterprises
- 40+ Full-coverage Industries
- 200+ Core City Layouts



Exploring Vision - AI Changes Life

Tel: 400-969-2699

Email: market-axq@keyetech.com/wm@keyetech.com

Address: No.56, Chang'an Rd, Hi-Tech Zone, Hefei, Anhui, China

