

SHKL COMPANY PROFILE

info@shklbathroom.com www.shklbathroom.com

ABOUT US.

Foshan SHKL Sanitary Ware Co., Ltd. was founded in 2004. It has always focused on the field of mid-to-high-end wood bathroom cabinets. It is a modern comprehensive sanitary ware group company integrating product design, research and development, production and marketing.

At present, it has a production base of over 100,000 square meters in China, and produces more than 70,000 pcs of bathroom cabinets, shower rooms and light mirrors per month; it has won the honors of "National High-tech Enterprise", "Foshan Standard Product Enterprise", "Head Brand of Sanitary Ware", etc., and has become a leader in China's high-end whole bathroom customization industry.

To better cater to North America markets' needs, boost competitiveness and refine professional production, we established a new state-of-the-art factory in Ho Chi Minh City, Vietnam. Covering 40,000 square meters with 450 employees, this factory features Vietnam's largest PU dust-free spray paint workshop for world-class product surface treatment.

SHKL's products are exported to more than 50 countries and regions around the world. Its service outlets are spread across the country. It has established important strategic partnerships with many world-renowned brands, and is committed to providing one-stop bathroom solutions for people who pursue high-quality life.



SHKL Philosophy

Vision

To be No.1 Brand in Whole Bathroom
Space Customization Industry

Mission

Create value for customers
Seek happiness for employees
Take responsibility for the society

Core values

Gratitude, Integrity,
Pragmatism, Innovation

COMPANY HISTORY

2004-2006

Foshan SHKL Sanitary Ware Co., Ltd was **established** in May of 2004. Took the lead in launching "SHKL" brand solid wood bathroom vanity in the market .In 2006, SHKL was exhibited at the Shanghai Kitchen & Bath Exhibition, Laid out the global market, and set off the trend of solid wood bathroom vanity.

2007-2009

To achieve scale development, SHKL has expanded the plant to 40,000 square meter. SHKL became the **leader** in the bathroom cabinet industry, and incubate two branches to produce shower enclosure and plywood bathroom vanity. The plant constantly upgraded, step from solid wood bathroom vanity to integral sanitary ware era. During these years, SHKL went abroad and appeared in the Dubai Big 5 Exhibition, Shanghai Kitchen & Bath Exhibition, Frankfurt ISH Exhibition, Canton Fair and other well-known international exhibitions

2010-2014

SHKL entered the **E-commerce** industry and became the president unit of Foshan Bathroom Cabinet Alliance, Leading the industry toward a new era of development. Meanwhile, SHKL established "**SHKL Business School**", "**SHKL Mutual Aid Foundation**", launched "**ERP** management" to promote staff growth, customer service was comprehensively upgraded. SHKL was awarded "China Top 10 Sanitary Ware Brands", "Top Ten Bathroom Cabinet Brands", "The Most Innovative Household Brand", "Foshan City Integrity Enterprise" and "Chinese Sanitary Ware Industry 20 years Outstanding Branded Enterprises", etc.

2015-2017

SHKL signed with Mr. Aref Fourat, a famous Swiss designer, **set up European R&D center**, and continually expanded the scale of factory. SHKL purchased 100,000 square meters of commercial land to build workshops in Qingyuan, Concentrate on the production of plywood bathroom vanities and LED mirrors. Established eight branches in succession, SHKL was constantly appearing in well-known media, Products also won a number of awards. At the same time, SHKL constantly expanding overseas markets, as SHKL attended several international famous exhibitions, such as KBIS, ISH, Dubai BIG 5 and so on

2018-2019

SHKL brand was constantly improving, promote and lead peers to achieve integrated bathroom customization, The chairman and the brand were recognised accordingly. SHKL chairman was awarded "the backbone of Chinese sanitary ware for 30 years" award, and SHKL brand was honored "**Guangdong Famous Brand**", "**National High-tech Enterprise**" and other honorary titles. SHKL won the best booth award in KBIS Exhibition, its brand influence has been established.

2020-2023

In a tough market environment, SHKL undertook its social responsibility and achieved growth against the trend. In the face of the severe pandemic and trade war between China and United States, SHKL constantly improved itself and achieved good results, re-planned the company's development strategy for a better future.

2024-2025

From 2024 to 2025, driven by continuous innovation and major breakthroughs in technology and craftsmanship, we achieved rapid export growth and significantly expanded our global market share. We focused on improving product quality, stability and cost efficiency to create greater value for global customers. With enhanced capabilities and higher standards, we are committed to delivering more reliable products and professional services to partners worldwide.



WHY CHOOSE SHKL

01

PROFESSIONAL

We have 22 years experience committed in manufacturing medium and high end wooden bathroom furniture and we have rich experience in exporting.

03

Strong R&D TEAM

You can get original designs each season to stand out from your competitors.

05

SUFFICIENT PRODUCTION CAPACITY

We have available production capacity to ensure deliver your order on time even you place big order in peak production season.

02

SUSTAINABLE DEVELOPMENT

We focus on environmental protection and employee growth, and have obtained certifications such as FSC, ISO45001, ISO14001, ISO9001.

04

OEM/ODM

Provide OEM/ODM service to some world famous sanitary ware brands. We have passed strictly factory inspection.

06

ONE-STOP BATHROOM SOLUTION

You can achieve one stop bathroom solution due to we have wide product lines.

Overseas's markets

Products exported to Australia, North America, Europe, South America and other countries and regions

Agents

600⁺

Showrooms

800⁺



SHKL SENIOR MANAGEMENT TEAM



SHKL STAFF GROUP PHOTO

20 YEARS ANNIVERSARY



Overall staff number: 600 ,Not include Vietnam factory

10 Years staff: 45

20 Years staff: 2

More than 5 years staff: 168

15 Years staff: 15

QUALITY CONTROL

All materials undergo testing by third-party institutions. Each batch is randomly tested in our internal lab.

Hinges achieve a level **10** rating after **24 hours of acid testing**

Slides reach level **9** after 18 hours
surpassing the national standard of level 7.



**More than
140,000 sqm
production bases**

SHKL has been focusing on lean production and refined production process creation, constantly optimizing and improving production efficiency to ensure product quality. The total production scale of the two modern production bases has reached 100,000 square meters, and one Vietnam production base with 40,000 square meters, effectively ensuring product quality, shortening the delivery time and continuously empowering the terminal sales system.

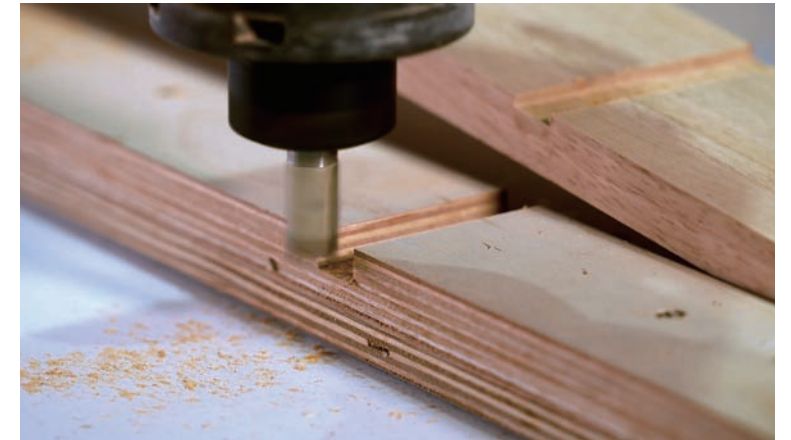
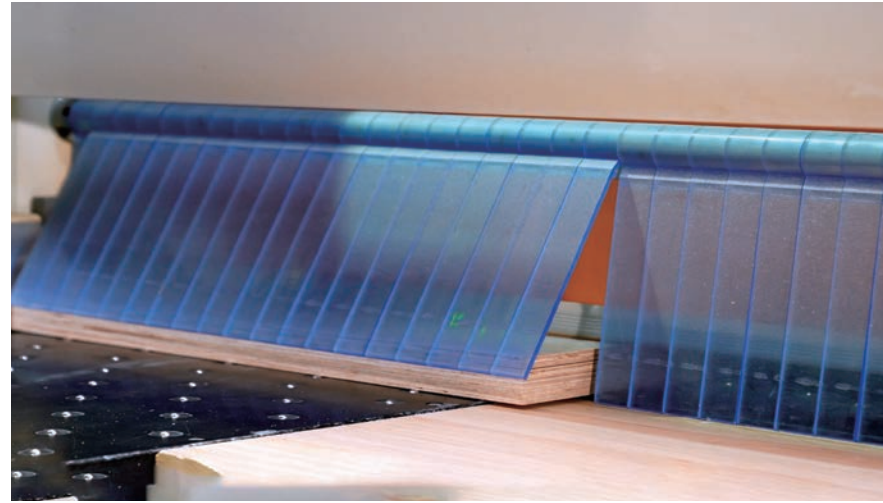
| SHKL VIETNAM PRODUCTION BASE

40,000 m²

SHKL Vietnam manufacturing base is mainly produces high end American-style solid wood vanity for US and Canada market. Additionally, our overseas layout enhances resilience against international trade risks, ensuring stable supply, shorter lead times and flexible responses for clients—all while upholding our consistent high quality. We have Vietnam's largest PU dust-free spray paint workshop for world-class product surface treatment.



ADVANCED EQUIPMENT AND TECHNOLOGY



WORKSHOP



QINGYUAN VANITY PRODUCTION BASE

100000⁺m²

SHKL Qingyuan manufacturing base is mainly produces lacquered and melamine bathroom vanities. Intelligent generation by scanning codes, automatic cutting of multiple plates at the same time, numerical control processing, and advanced edge banding technology form a fully automated streamlined production, guarantee the manufacturing preciseness and stability, and greatly improves the efficiency of our mass customization.



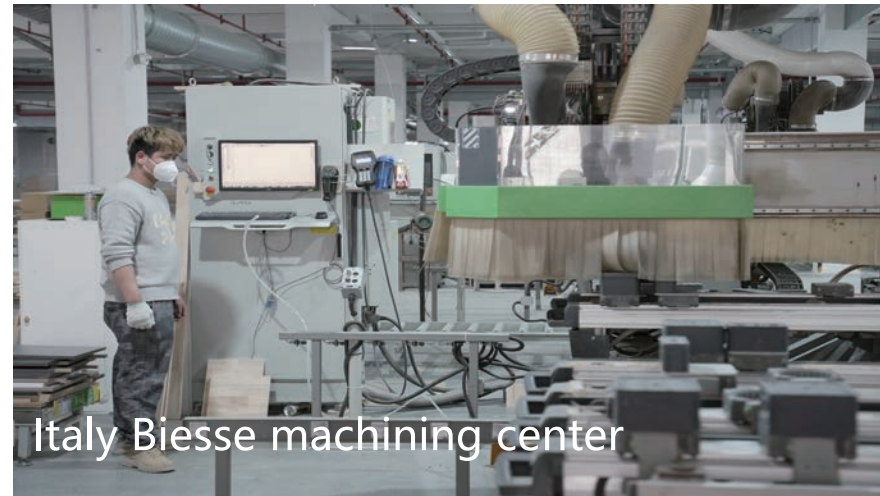
ADVANCED EQUIPMENT AND TECHNOLOGY



Numerical control drill



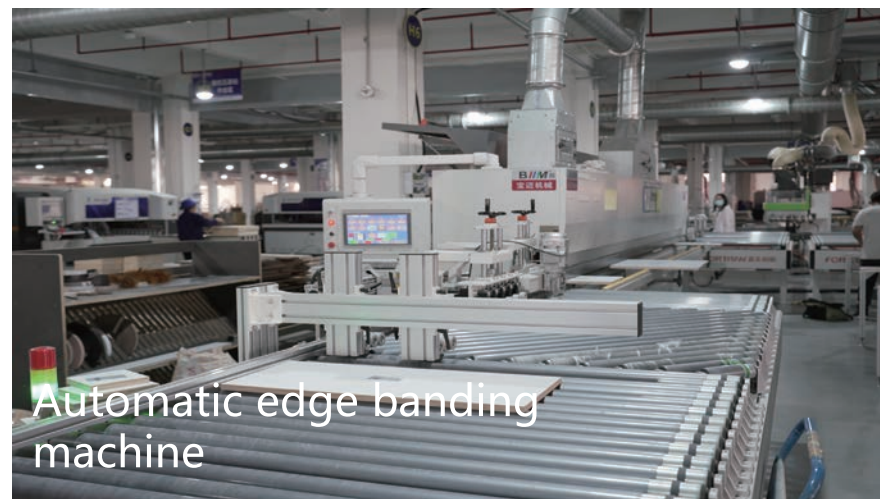
CNC cutting machine



Italy Biesse machining center



Automatic dry room



Automatic edge banding machine



Reciprocating spraying automatic sander

WORKSHOP



PRODUCT DISPLAY



KL813019



KL813003



KL813002



KL810879

Product Features

- Good quality raw materials, Conform to FSC
- Short production time
- Simple & elegant design
- Competitive price

PRODUCT DISPLAY



AS813070



AS813093A



AS813101



AS813084

Product Features

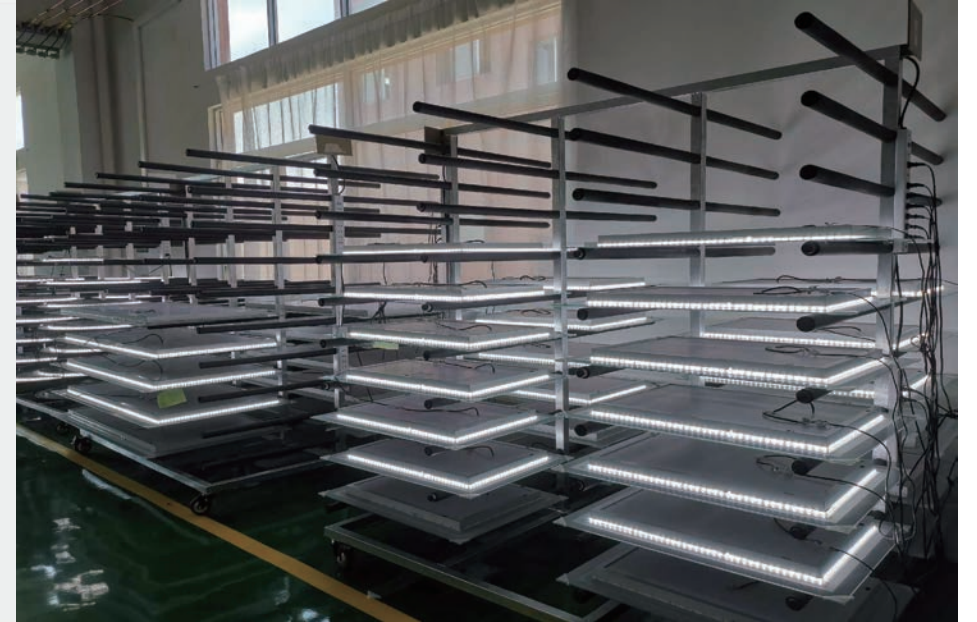
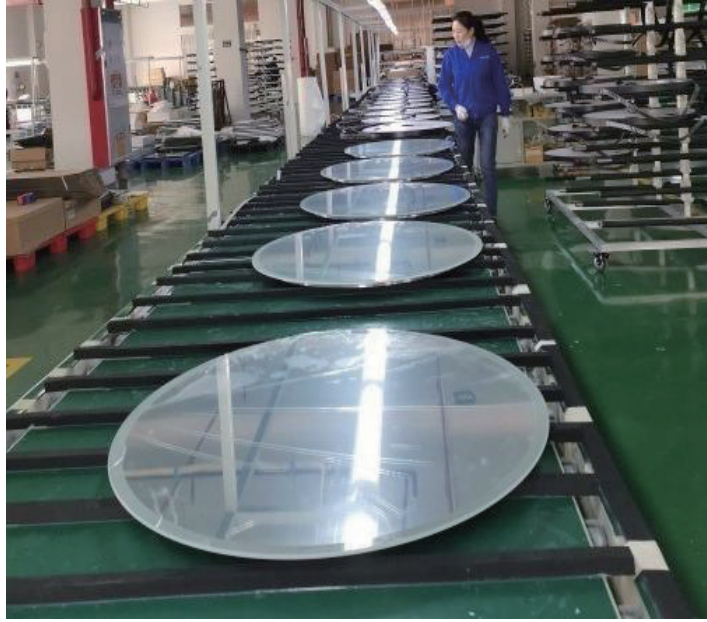
- Good quality raw materials, conform to CARB P2
- Products surface with PU panit treatment
- Short production time
- Cutting edge design with high quality

LED MIRROR PRODUCTION BASE

SHKL Smart Mirror production center mainly produces LED mirrors and mirrored cabinets. In order to ensure the production environment of the products to achieve high-quality products and meet the inspection standards of different certifications, it builds a fully enclosed dust-free constant temperature workshop and all employees have strict dressing requirements. At present, we have obtained the overall CE and ETL certification.

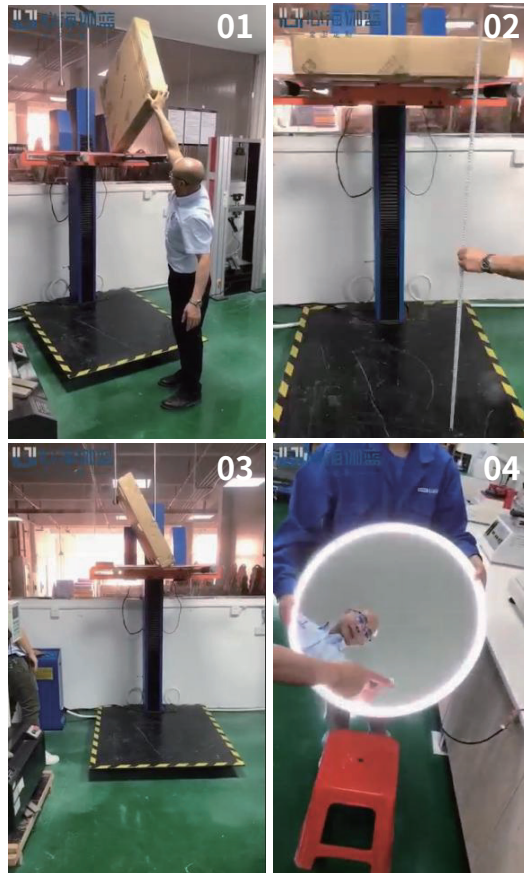


SHKL Mirror workshop



2A Test Procedure

Determine the drop height based on the weight of the packaged item. Refer to the table below to identify the drop height or impact velocity according to the weight of the packaged item.

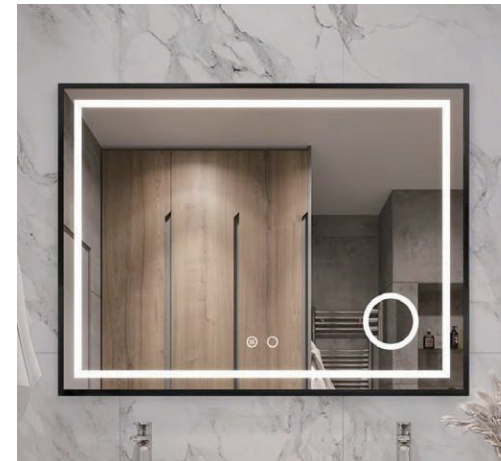


Weight				Height		Impact velocity	
≥		<		Free fall		Inclined or horizontal impact	
lb	kg	lb	kg	In.	mm	ft/s	m/s
0	0	21	10	38	970	14	4.4
21	10	41	19	32	810	13	4.0
41	19	61	28	26	660	12	3.6
61	28	100	45	20	510	10	3.2
100	45	150	68	12	310	8	2.5

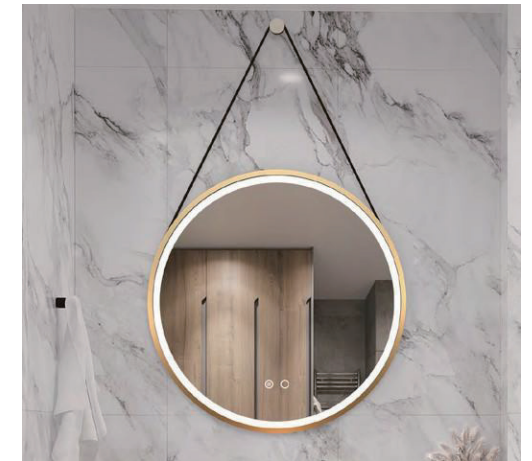
PRODUCT DISPLAY

Product Features

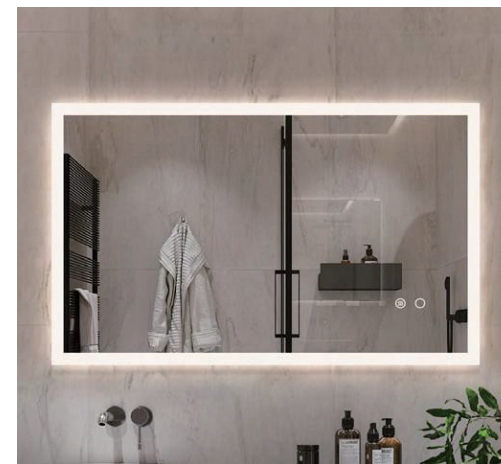
- Touch Button/Sensor motion control
- Temperature display
- Bluetooth equipment-play music
- Copper-free Ecofriendly material
- Long duration life, up to 50,000 hours
- High Quality Water Proof LED Belts
- Anti-fog function
- Energy saving
- Dimmable
- CCT adjusting



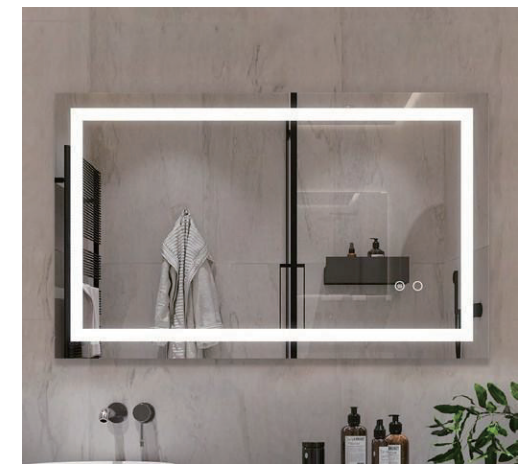
KL910765



KL910779



KL910699



KL910702

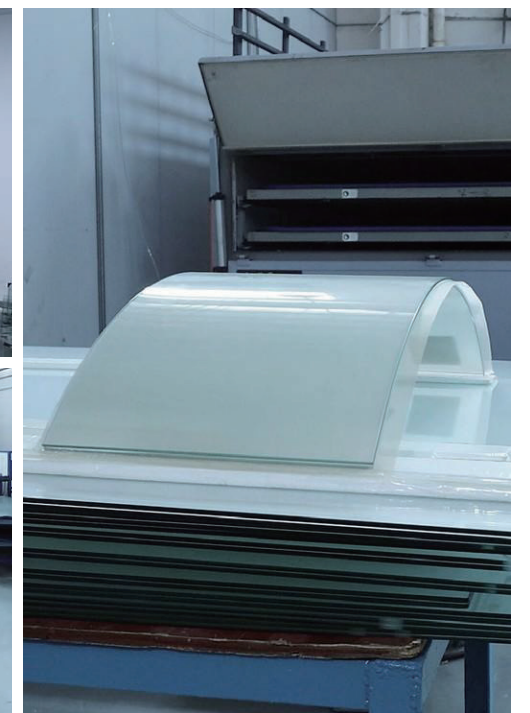
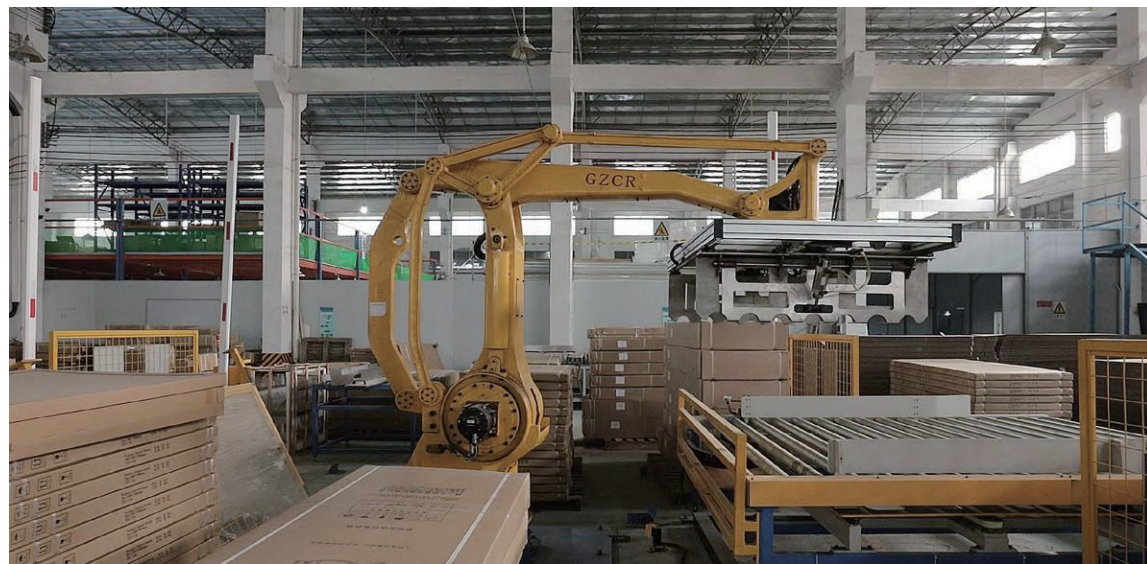
SHOWER ENCLOSURE PRODUCTION BASE

30000+ m²

SHKL shower room manufacturing base is mainly produces shower room. It is highly focused on details and safety from the purchasing of raw materials to the production of all processes. In order to create safer products, we devote ourselves to the research and development and production of laminated glass. We are the only company in the industry to independently develop and produce laminated glass, self-sufficient to create more advantageous products and to solve product safety issues.



WORKSHOP





SGCC
TEMPERED
GLASS



LAMINATE
D GLASS

LAMINATED GLASS

TECHNOLOGY

THE TECHNOLOGY OF LAMINATED GLASS IS OUR PATENT.

Laminated glass is a composite glass product in which one or more layers of organic polymer EVA are sandwiched between two or more pieces of tempered glass after special high-temperature process, the glass and the intermediate film are permanently bonded together. It is with high impact strength and safer than normal tempered glass.

Even if one of the glass explodes spontaneously, the debris will be stuck to the film, and the broken glass surface remains clean and smooth. This effectively prevents the occurrence of debris piercing and penetrating fall incidents, and ensures personal safety.

TEMPERED
GLASS

EVA

TEMPERED
GLASS



GLASS DAMAGE TEST



NORMAL TEMPERED GLASS

Split into particles immediately after damage, easy to scratch the human body.



TEMPERED GLASS WITH FILM

The particles stick to the film layer after damage, and the whole glass will be fall down, easy to hurt human also.



★ SHKL LAMINATED GLASS

The damage surface still is flat, it will not fall down and hurt people that can be used continued.



PRODUCT DISPLAY



Product Features

- Original design
- Tempered Glass / Laminated glass
- High quality hardware
- Easy installation
- Safty package



KL5556312 Black



KL5577310



SHKL EXHIBITION

EXHIBITION



2025 KBC
Shanghai



2025 ISH
Frankfurt



2024 KBC,
Shanghai



2024 CONTAN FAIR, GUANGZHOU,
CHINA



2021 KBC, SHANGHAI,
CHINA



2019 KBIS, Las Vegas, NV,
USA



2018 KBIS, ORLANDO, FL,
USA



2017 KBIS, ORLANDO, FL,
USA



2017 ISH,
GERMANY



DUBAI
2016 BIG FIVE,

PROJECT CASE



Location: New York
QTY: 162 Sets
Type: Apartments



Kitchen Cabinet



Bathroom Cabinet

PROJECT CASE

Location: Edmonton, Canada
QTY: 310 Sets
Type: Home & Hotel



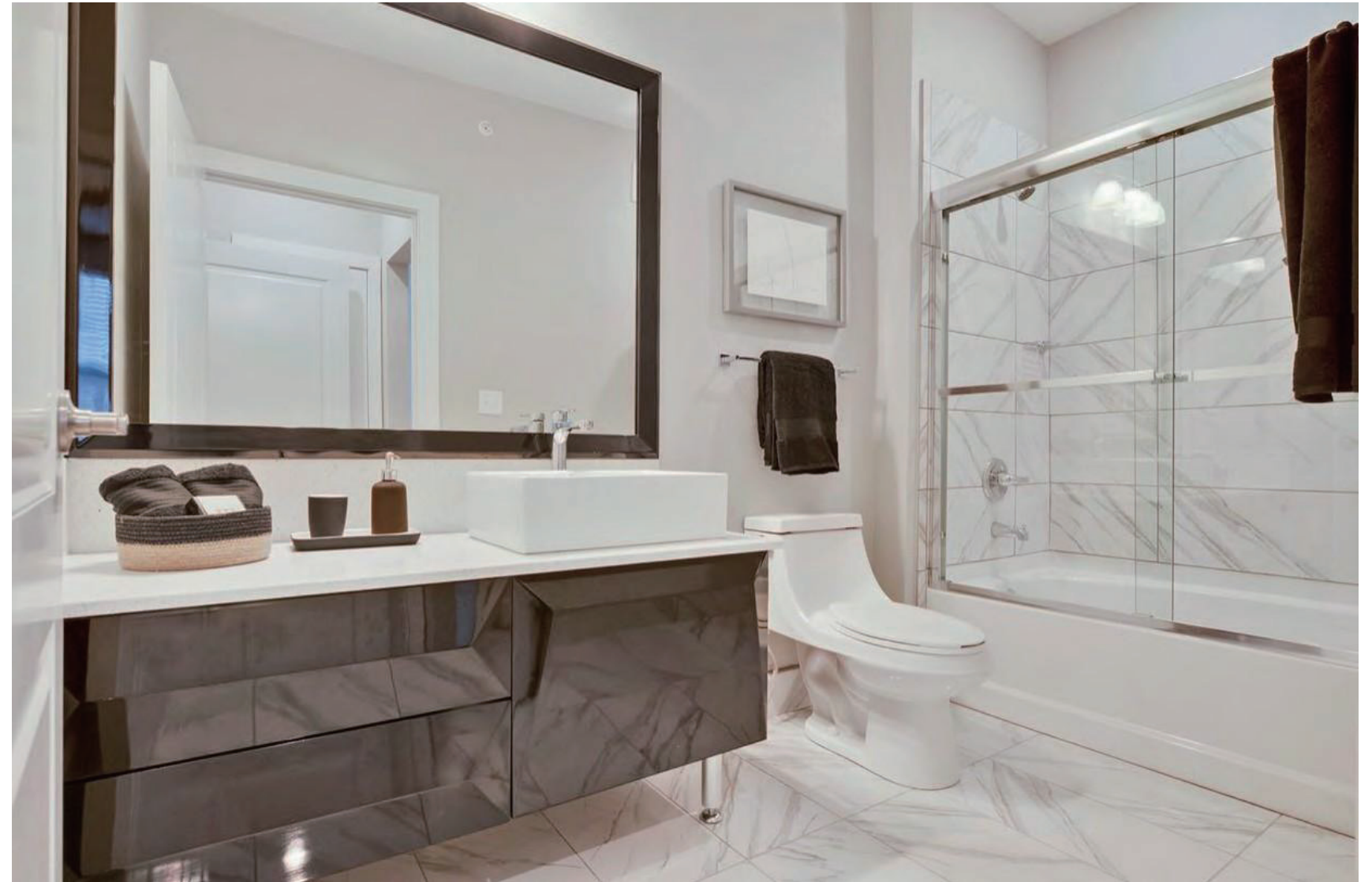
Kitchen Cabinet



Bathroom Cabinet, Led Mirror & Shower Enclosure

PROJECT CASE

Location: New York, USA
QTY: 630 Sets
Type: Apartments



Bathroom Cabinet & Shower Door

PROJECT CASE

Location: Thailand
QTY: 110 Sets
Type: Villa projects



Location: China
QTY: More than 5000 sets/year
Type: Domestic project



Shower Door

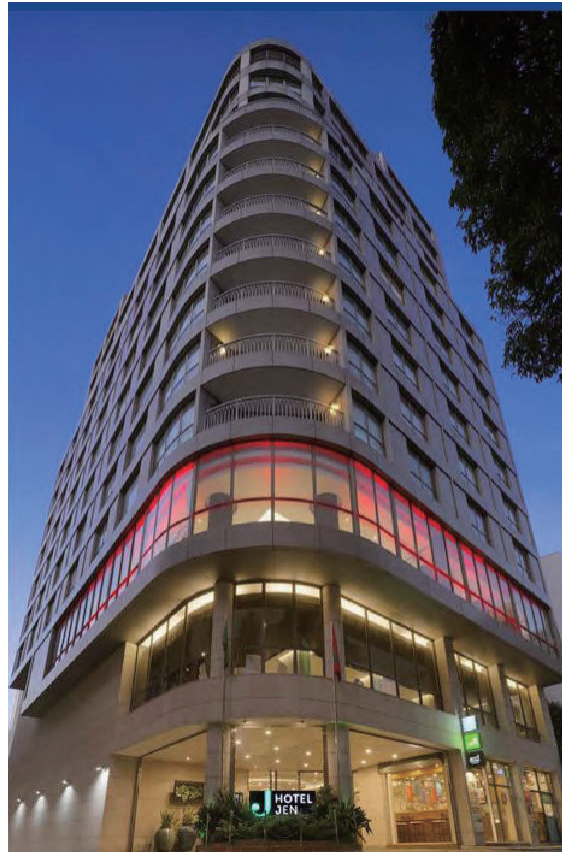


Bathroom Cabinet & Shower Enclosure

PROJECT CASE

Location: Maldivals
QTY: 360 Sets
Type: 5 Star Hotel

Location: Canada
QTY: 80 Sets
Type: 5 Star Hotel



Shower Enclosure



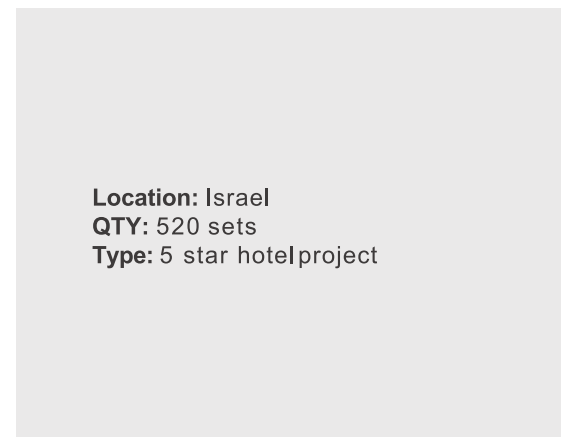
Laminated Glass with 3D printing for wall decoration

PROJECT CASE

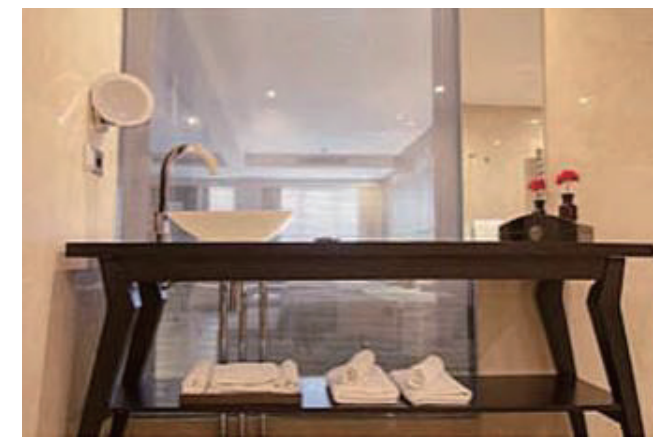
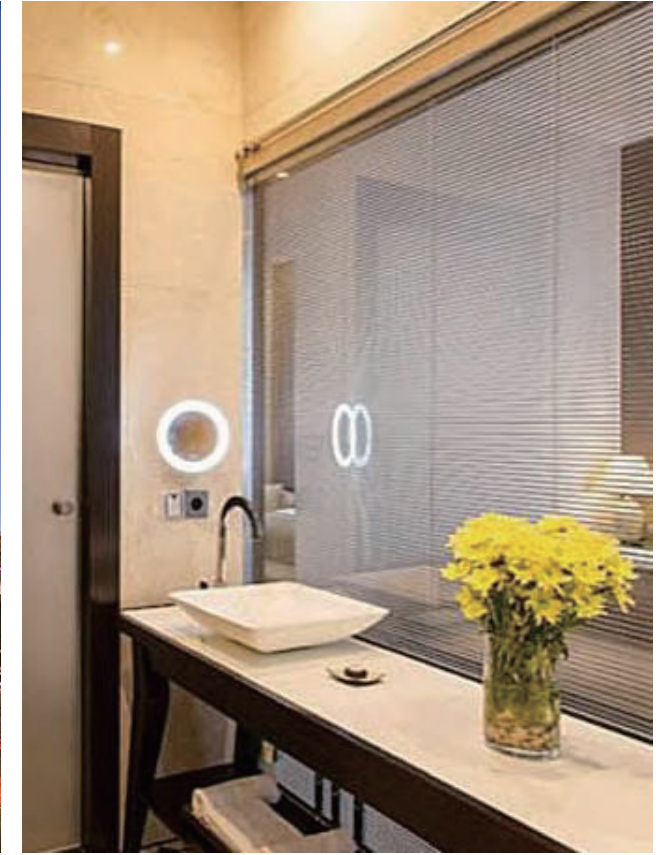
Location: China
QTY: More than 5000 Sets/year
Type: Domestic project



Bathroom Cabinet & Shower Enclosure



Location: Israel
QTY: 520 sets
Type: 5 star hotel project



Bathroom Cabinet

SHKL

CONTACT US

FOSHAN SHKL SANITARY WARE CO., LTD

Marketing Center:

Rm901-902, T10 Building, Smart city, 2nd Jihua Road, Chancheng District, Foshan City, Guangdong Province, China

Tel: +86-757-82583932 **Fax:** +86-757-82583936

E-mail: info@shklbathroom.com

Website: www.shklbathroom.com

MORE PRODUCTS:



VANITY



LED MIRROR



SHOWER ENCLOSURE



AMERICAN-STYLE CUPBOARD

