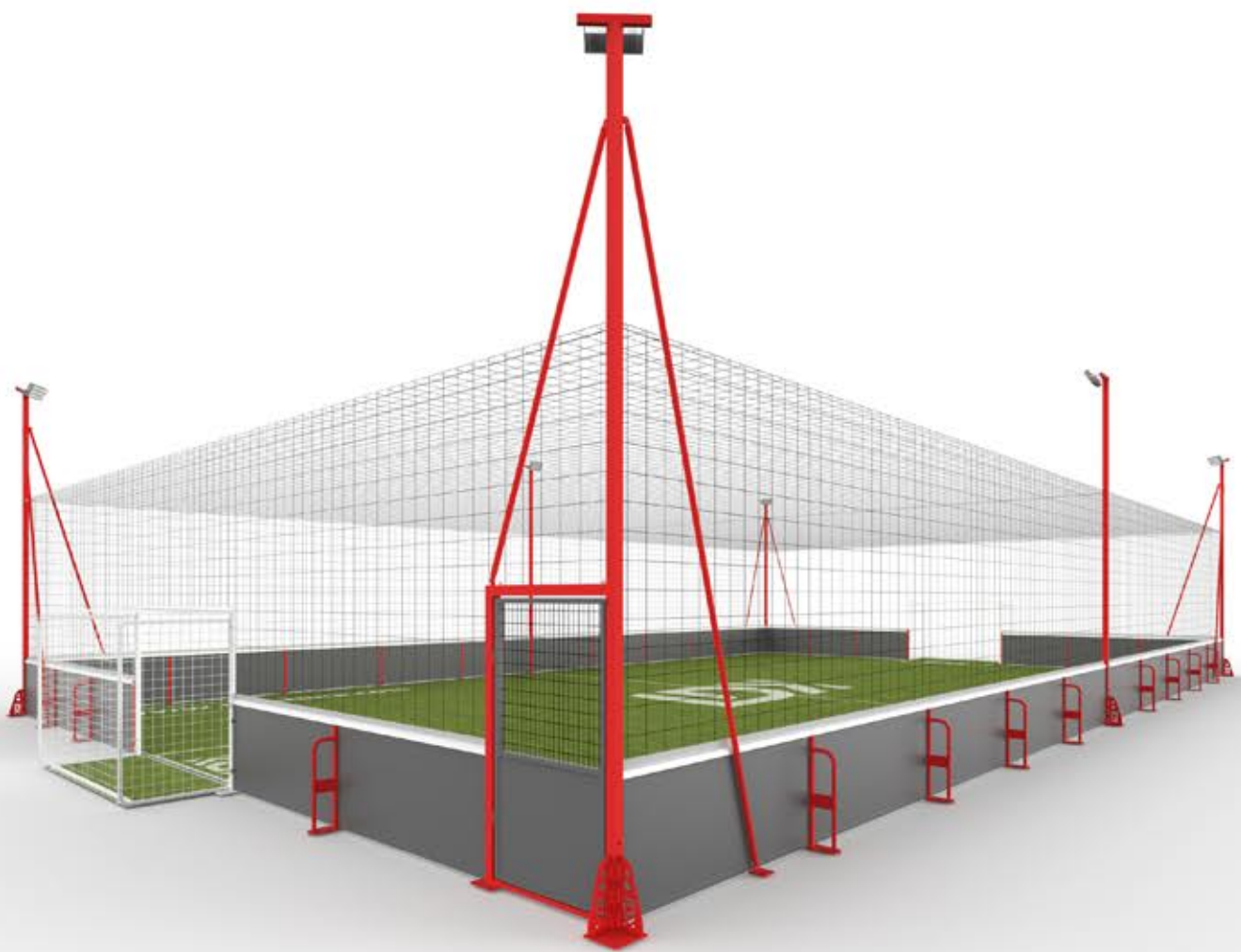




PROFESSIONAL IN EVERY DETAIL
PRODUCT CATALOG

S I N C E 1 9 8 1



Contact US

Shenzhen LDK Industrial co., Ltd

Office Address: A208,A Building,45 Lixin Road,LongGang District,ShenZhen,

China Factory Address: Gaowan industrial Park,HaixingCounty,Cangzhou,Hebei,China

TEL: 86-755-89896763

E-mail: anna@ldkchina.com

FAX: 86-755-32971723

www.ldkchina.com

Our Services

Exported to 60+ countries in the world.



Mission & Philosophy

Let more people enjoy better sports equipment!



SERVICE



INNOVATION



QUALITY



INTEGRITY

Company Profile

SHENZHEN LDK INDUSTRIAL CO., LTD.

Established in Shenzhen near HK, with a 30,000 m² facility on the Bohai Sea coast. LDK has over 40 years of expertise in sports equipment design, R&D, production, sales, and service.





Factory interior

Modern Factory

Persistence, excellent management, good process, and finest quality are the spiritual milestones to assure the quality. We own a top-notch factory environment and first-class equipment, and we are approved by NSCCI509001, 15014001, and OHSMS. This guarantees us to do more and more high-quality products continuously and offer each staff high-quality work, study, sports and life.



TABLE OF CONTENTS



01

LDK PADLE TENNIS COURT

01-08



02

LDK PADBOL

09-14



03

LDK SOCCER COURT

15-24



04

LDK SQUASH COURT

25-32



05

LIGHT STEEL STRUCTURE
MULTIFUNCTIONAL GYMNA-
SIUM

32-40

01

LDK PADLE TENNIS COURT

Introduction to paddle tennis

Padel tennis originated in Spain and is a racket sport that combines tennis and squash. Compared with tennis, the rules of paddle tennis are simpler, making it a sport that even beginners can pick up quickly. The secret of paddle tennis is that the racket is different from tennis. There are no strings on the paddle tennis racket, just a board. Its structure makes it possible for the ball to hit back no matter which side of the racket it hits, so even beginners can easily play continuously and quickly feel the fun of playing. Merely playing against each other cannot perfectly embody paddle tennis. The charm of paddle tennis is that the ball bounces off the walls surrounding the court, which is also one of the joys of paddle tennis because players must catch the ball as it bounces off the walls. "The ball can fly back, forth, left, right, or even above freely, so this sport is also called a "three-dimensional sport." Because you need to calculate the angle, it will be difficult at first. If you can use the wall to play, you can experience the fun of paddle tennis more personally.

PRODUCT CHARACTERISTICS



01

Panoramic Padel Court Type A

Portable Panoramic type.

Hot dip galvanizing technology is to immerse the derusted steel parts into the moltenzinc at about 500 degrees to make the steel structure.

Zinc layer is attached on the surface to avoid direct contact with air, so as to achievethe purpose of anti-corrosion and rust resistance.

Exclusive thickened insulation hot-dip galvanized protective layer.

Surface treatment process of omni-directional zero dead angle hot-dip galvanizingfor inner and outer walls.

Lndependent net frame design, standard modularization, support rapid disassemblyand reuseand convenient maintenance.



03

Panoramic Padel Court Type C

Two independent corner columns .

Hot dip galvanizing technology is to immerse the derusted steel parts into the moltenzinc at about 500 degrees to make the steel structure.

Zinc layer is attached on the surface to avoid direct contact with air, so as to achievethe purpose of anti-corrosion and rust resistance.

Exclusive thickened insulation hot-dip galvanized protective layer.

Surface treatment process of omni-directional zero dead angle hot-dip galvanizingfor inner and outer walls.

Lndependent net frame design, standard modularization, support rapid disassemblyand reuseand convenient maintenance.

02

Panoramic Padel Court Type B

Hot dip galvanized steel structure - all-weather and all-round rust resistance.

Hot dip galvanizing technology is to immerse the derusted steel parts into the moltenzinc at about 500 degrees to make the steel structure.

Zinc layer is attached on the surface to avoid direct contact with air, so as to achievethe purpose of anti-corrosion and rust resistance.

Exclusive thickened insulation hot-dip galvanized protective layer.

Surface treatment process of omni-directional zero dead angle hot-dip galvanizingfor inner and outer walls.

Lndependent net frame design, standard modularization, support rapid disassemblyand reuseand convenient maintenance.



04

Classic Padel tennis court

Material used: High grade galvanized steel pipe structure

Tempered glass: High quality tempered glass, thickness 12mm

Tennis Post: High grade galvanized steel post with nets

Fixed Method: Fixed with expansion screw and with detailed IM

Surface: Electrostatic epoxy powder painting, environmental protection, anti-acidanti-wet

There are many painting colors for options





05

Panoramic Padel tennis Court

Hot dip galvanized steel structure - all-weather and all-round rust resistance.

Hot dip galvanizing technology is to immerse the derusted steel parts into the molten zinc at about 500 degrees to make the steel structure.

Zinc layer is attached on the surface to avoid direct contact with air, so as to achieve the purpose of anti-corrosion and rust resistance.

Exclusive thickened insulation hot-dip galvanized protective layer.

Surface treatment process of omni-directional zero dead angle hot-dip galvanizing for inner and outer walls.

Independent net frame design, standard modularization, support rapid disassembly and reuse and convenient maintenance.

LDK PADDLE TENNIS COURT CASE

06

Upgraded Panoramic Padel Tennis Court

Moving roof,
 Double PVC-coated tent cover 750g/M²,
 Cover structure 100x50mmx12000mm,
 Cover strengthen structure 50x30x1.0mmx2m,
 The beam of the cover 100*100*3mm*20.8m



Chile Padel Project

07

Upgraded Panoramic Padel Tennis Court

With fixed roof,
 Double PVC-coated tent cover 750g/M²,
 Cover structure 100x50mmx12000mm,
 Cover strengthen structure 50x30x1.0mmx2m,
 The beam of the cover 100*100*3mm*20.8m



Shenzhen Futian CBD Padel Project



Italy Padel Project



Dubai Padel Project

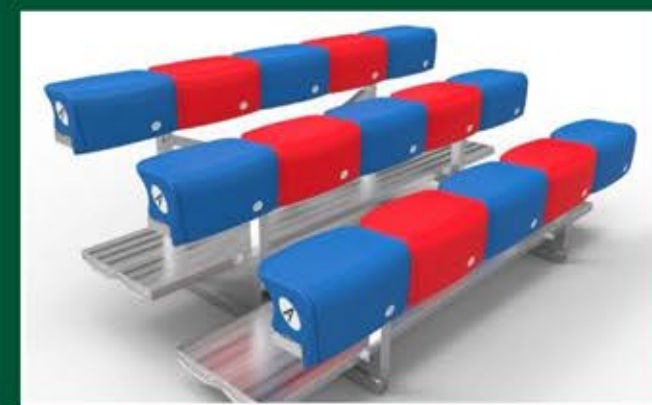


Spain Padel Project



Dongguan SKY Padel Project

PADLE TENNIS SUPPORTING PRODUCT

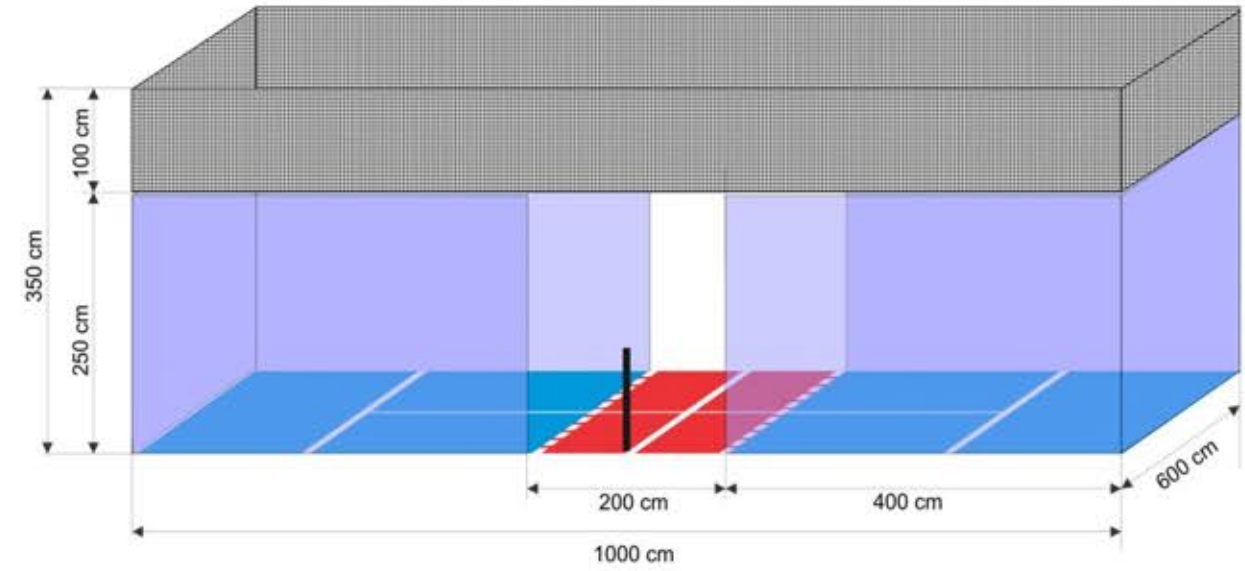


02

LDK PADBOL

LDK Padbol Campaign Introduction

Padbol is an innovative sport that combines elements of football, tennis, volleyball and squash. It was founded by Argentinian Gustavo Miguens in La Plata in 2008. This sport combines the characteristics of multiple sports, has simple rules, is fun and suitable for participants of all ages.



Introducing our top-tier Padbol Court designed for durability and optimal performance. The court features CE-certified ultra-clear glass, ensuring superior visibility and safety. The metal frame is constructed using a hot-dip galvanizing process, making it highly resistant to moisture, oxidation, and corrosion, ensuring a long lifespan even in challenging environments.

With dimensions of 10x6 meters, this court is perfectly suited for professional and recreational use, offering an exceptional playing experience. Whether for clubs, schools, or commercial venues, our Padbol Court is built to last and perform.

Padbol Court

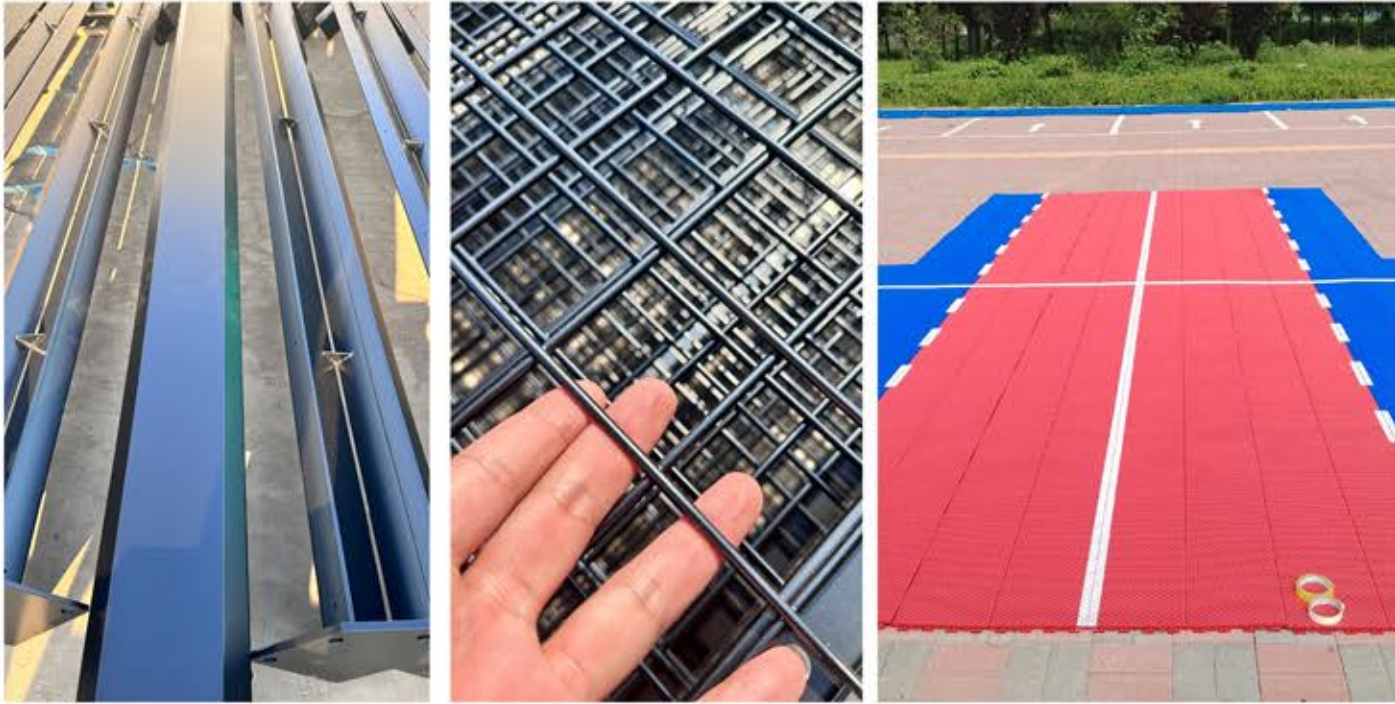
Premium Quality for Ultimate Play

INTRODUCING OUR TOP-TIER PADBOL COURT

Designed for durability and optimal performance, this court offers a professional-grade experience for both recreational and competitive play.

**PADBOL COURT - PREMIUM QUALITY FOR
ULTIMATE PLAY**

DETAILS DISPLAY



LDK PADBOL CASES

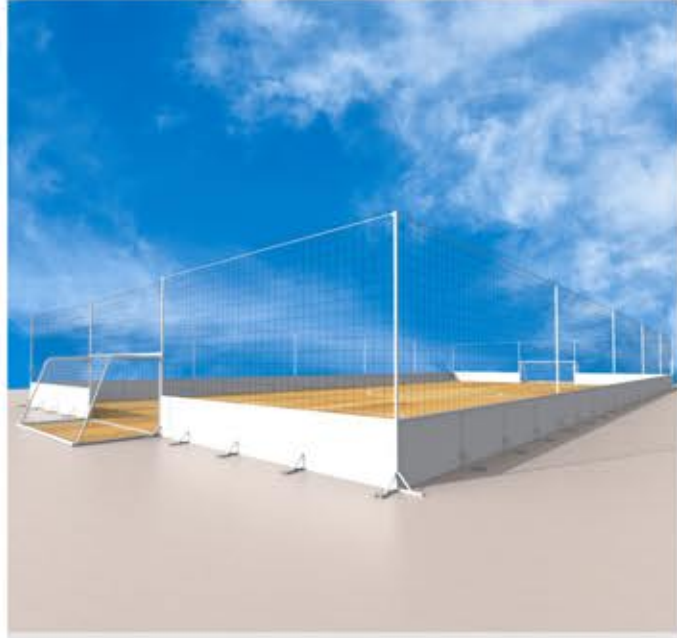
LDK SOCCER COURT

Cage football is a small-field competitive sport played in a closed net. It originated on the streets of European cities and has been professionally transformed into a new sport that combines fun, competition and social interaction. Compared with traditional 11-a-side or 5-a-side football, it occupies a smaller area, has more intense competition, and is more demanding on skills and physical fitness. Whether it is community entertainment, campus competition, or club league, it can bring a very exciting competition experience.

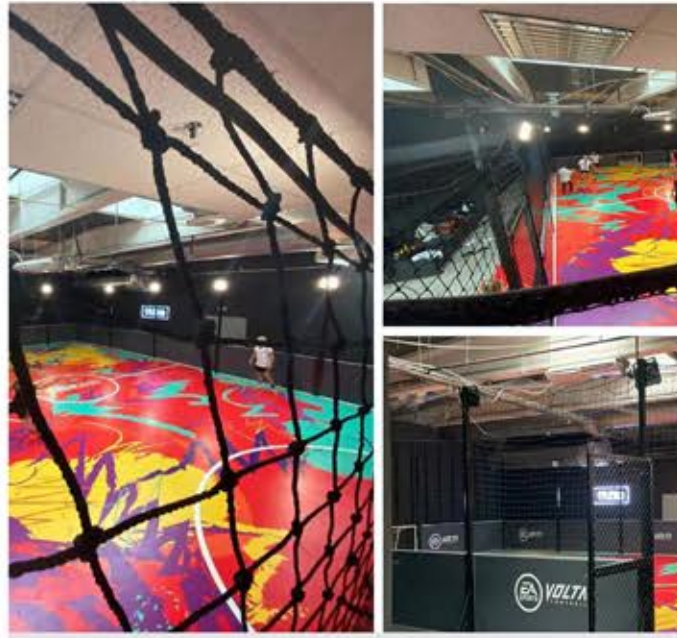
03

Break the boundaries and make every shot more challenging





Portable soccer court



indoor soccer court



Fixed venue soccer court



Multifunctional soccer court

BOARDS



Steel board



Plastic board



Laminated board



LED board



Glass board



Glass board

CUSTOM THE COLORS YOU WANT

Custom the colors you want



PRODUCT TYPE

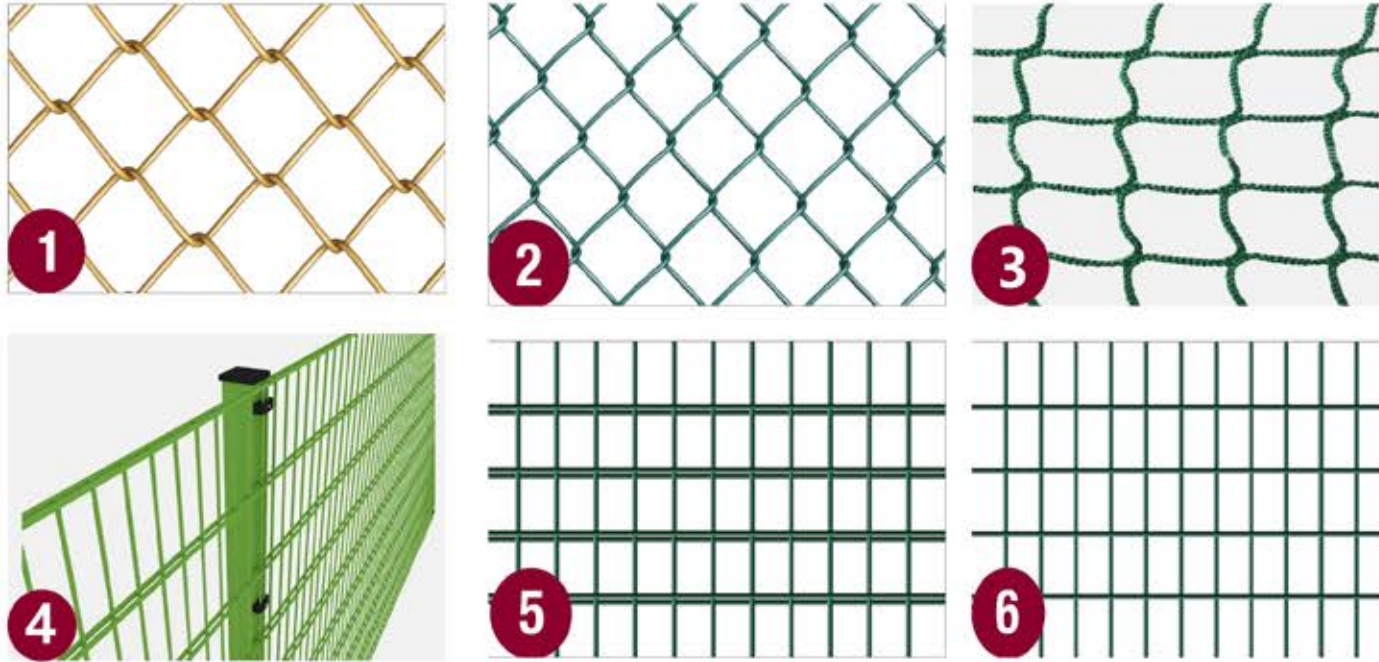
We supply innovative solutions, and welcome designs from customers.

CAGE FENCE STRUCTURE

Large Multi-Sport Court

Mesh Types

A varied selection of mesh as follows.

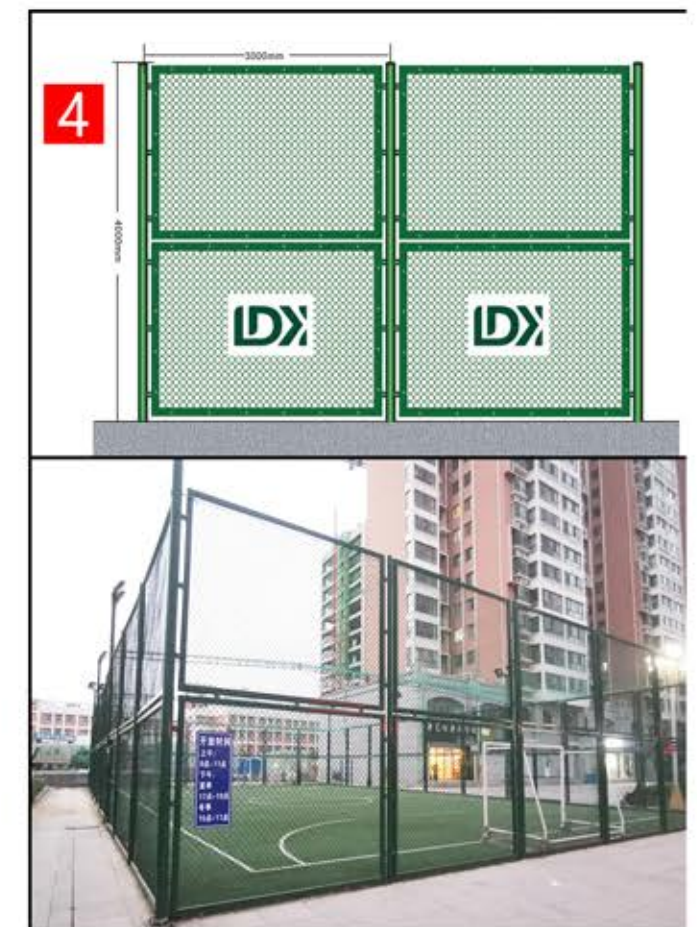
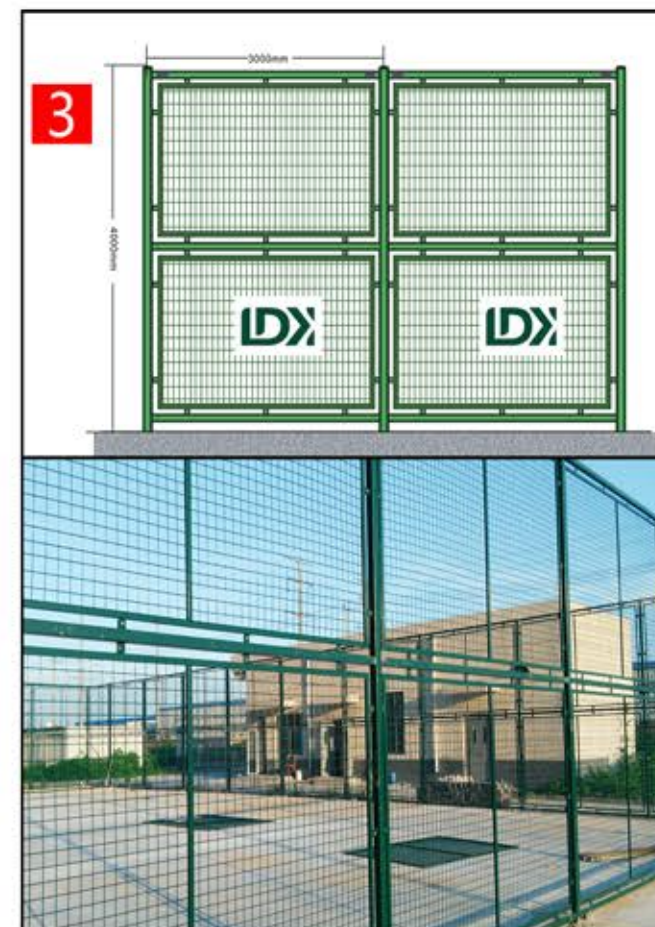
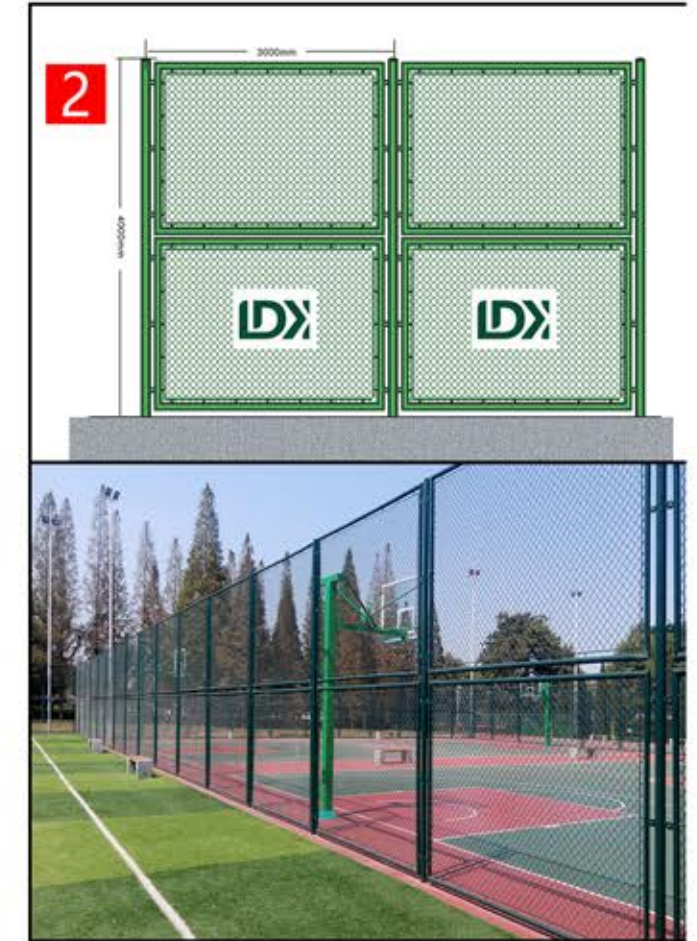
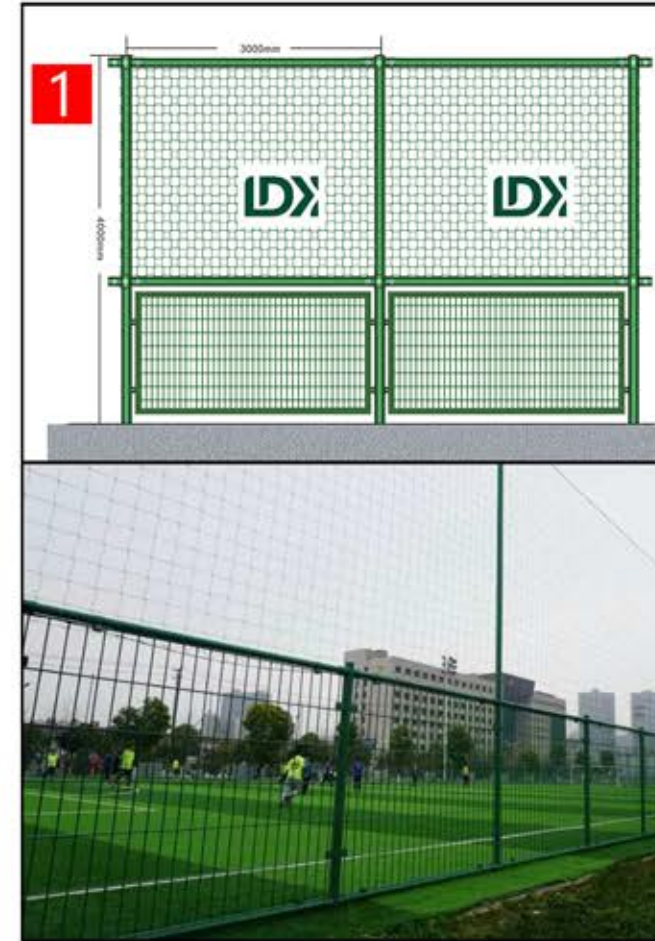


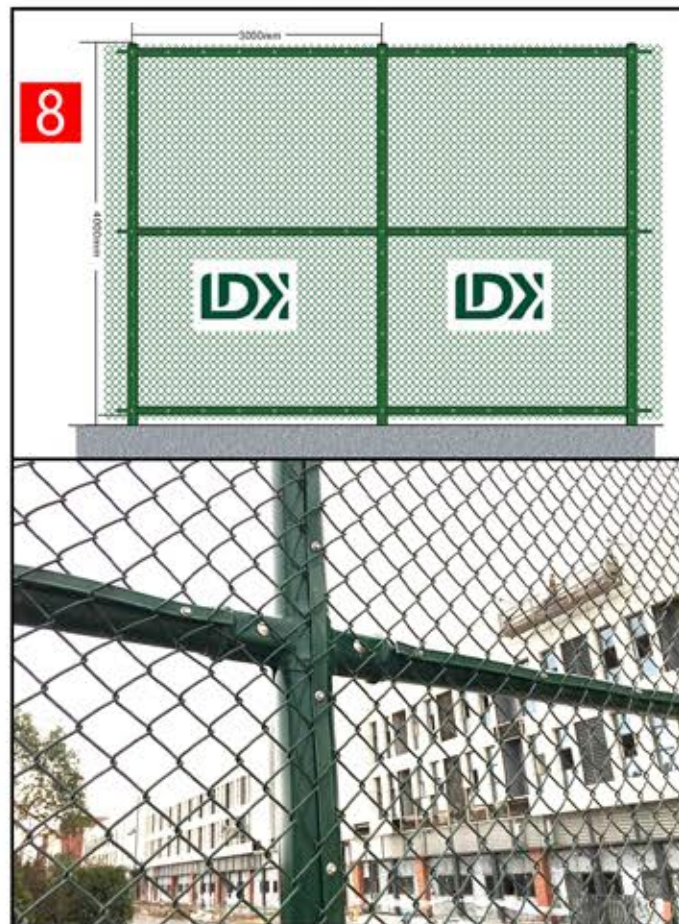
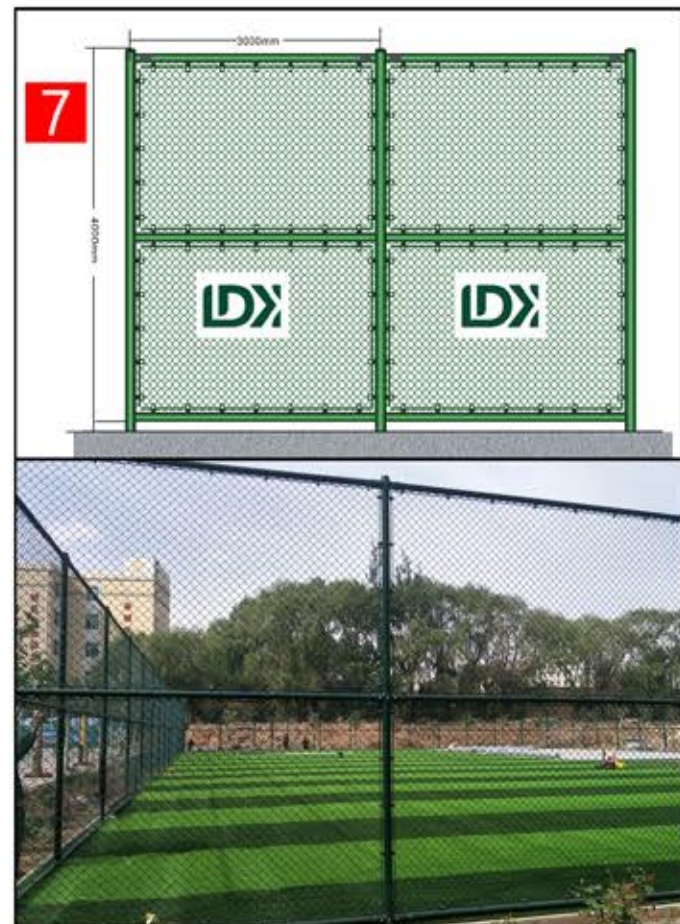
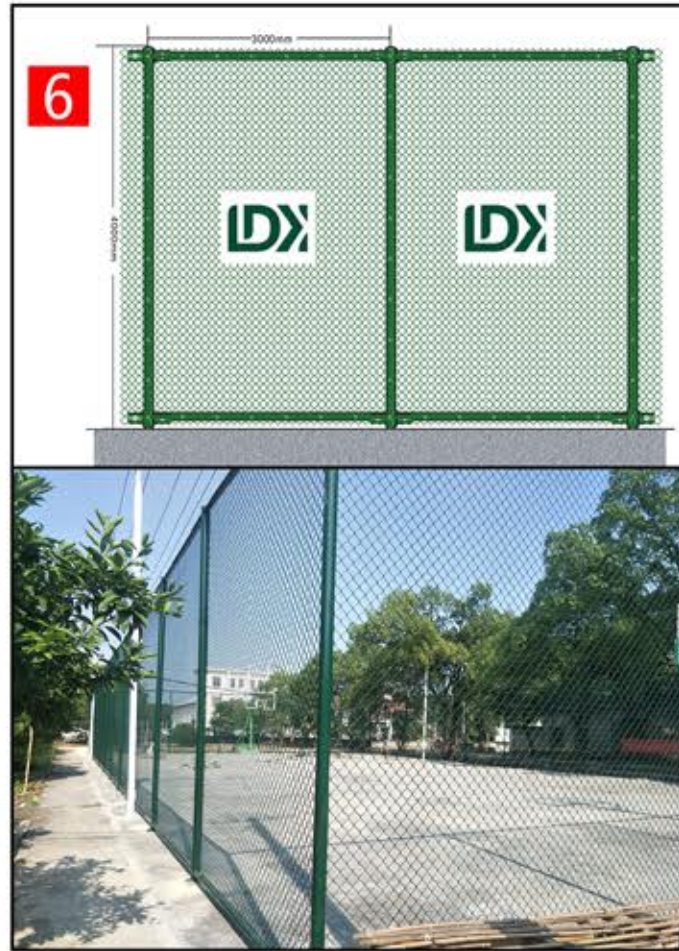
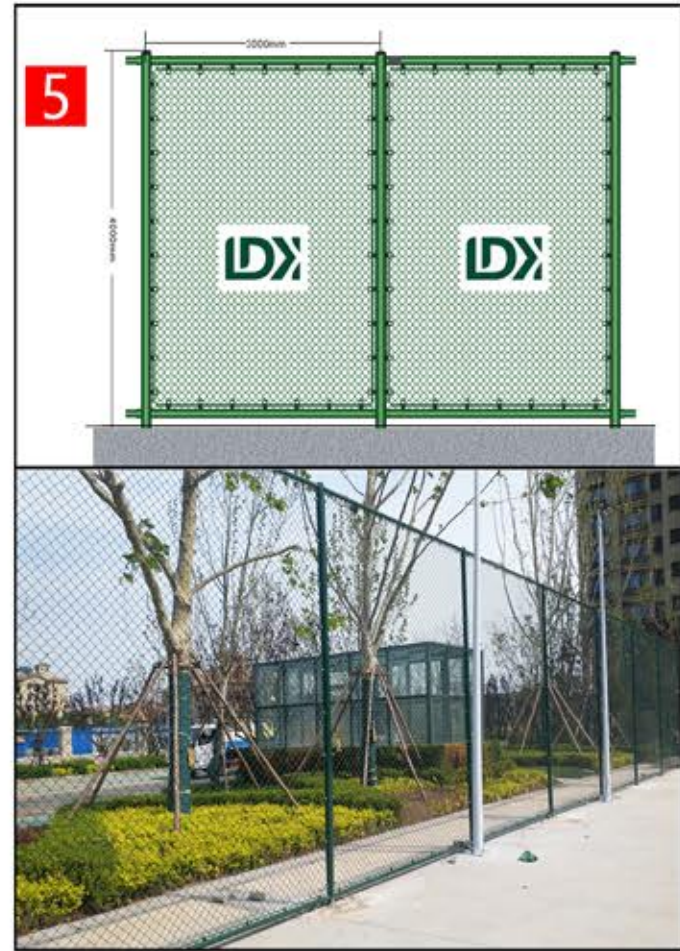
Net Ceiling



Fence Structure

We have 8 variations which allow customersto select favorite fence structure design.

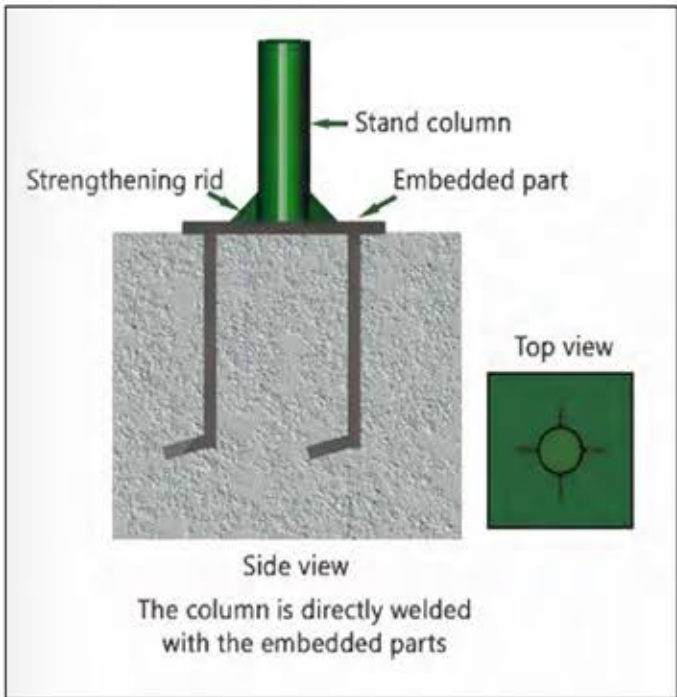




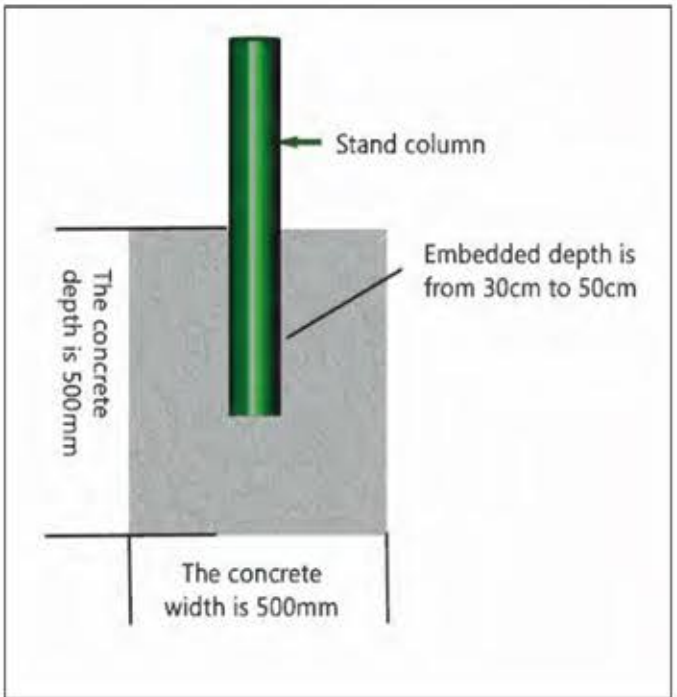
Installation method

4 Methods To Place The Pole Into The Ground

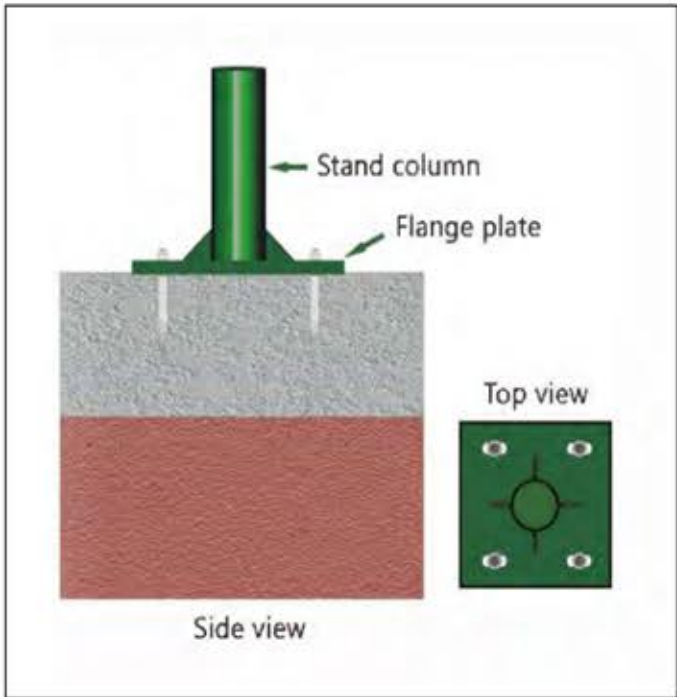
Embedded Parts Fixed By Welding



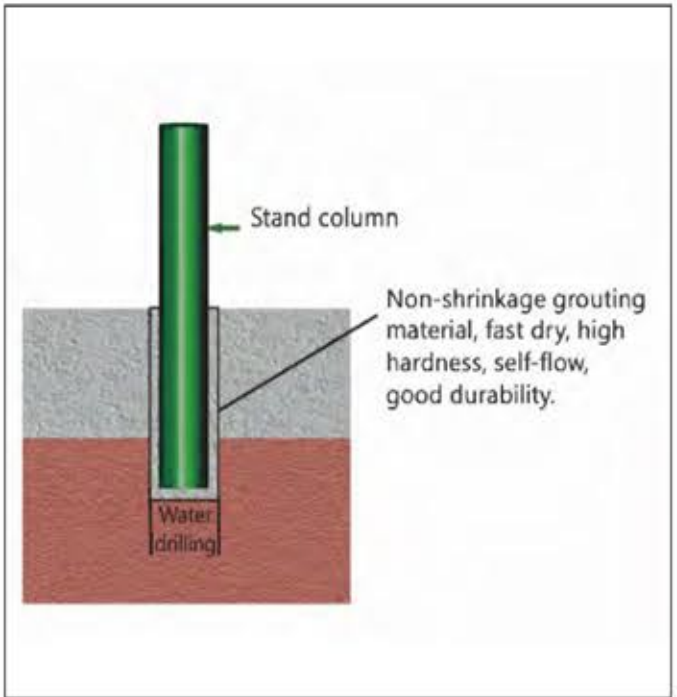
Dig Holes And Pour Concrete

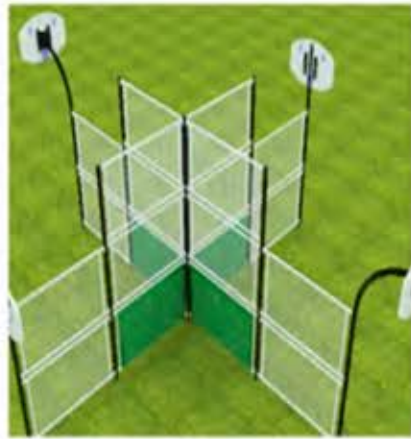


Fixed With Expansion Screws Or Chemical Bolts On Concrete Floor



Fixed In The Water Drilling Hole On Concrete Floor





mini cages



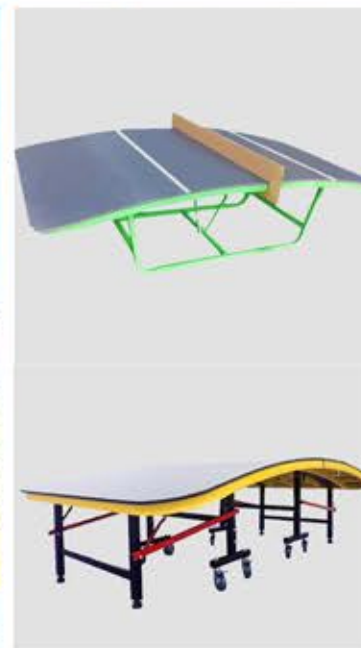
Small Soccer Children Multipurpose court Cage

LAMP SYSTEM

Luxury lighting system as a further option.

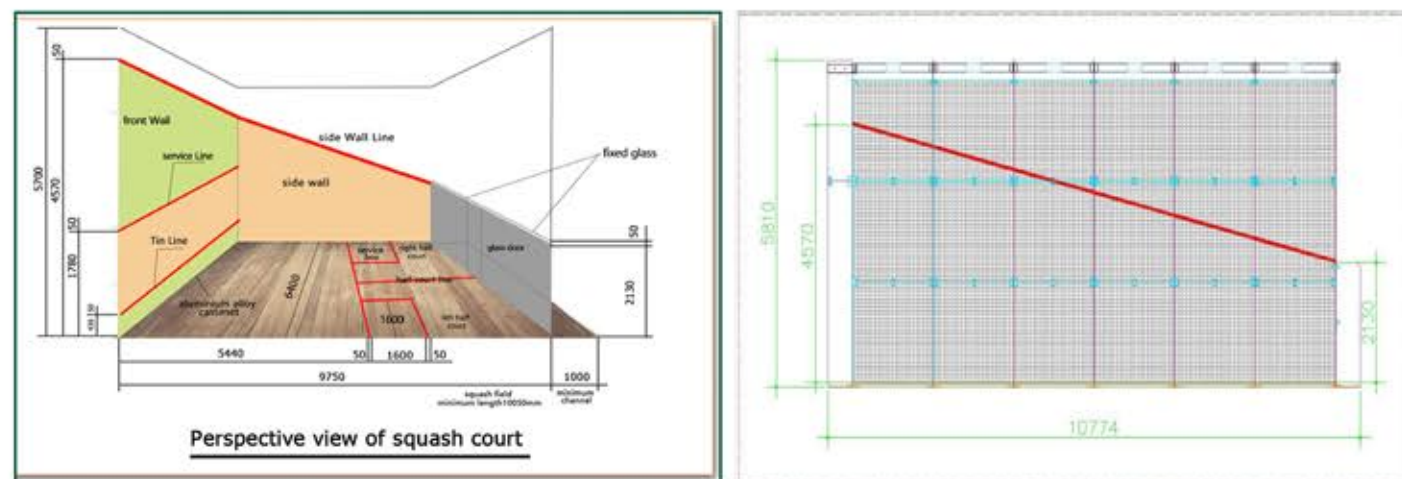


SOCCER COURT SUPPORTING PRODUCT



04 LDK SQUASH COURT

ALL-GLASS SQUASH COURT



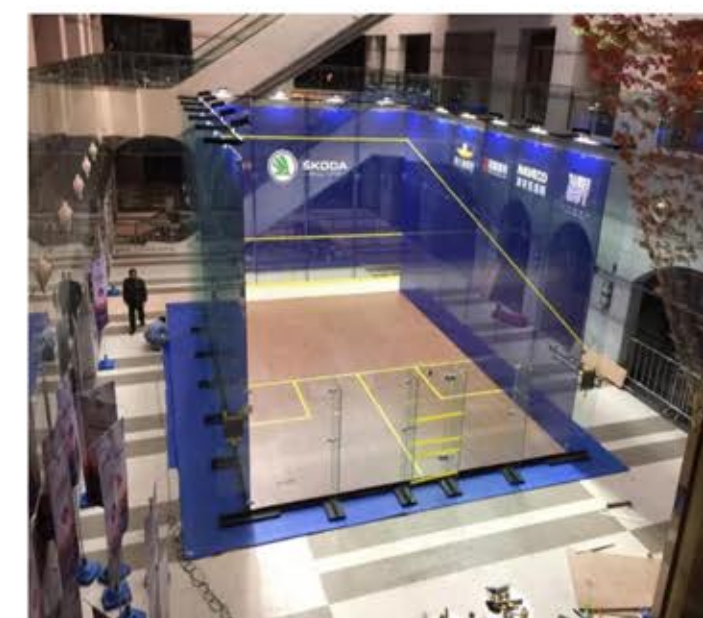
SQUASH COURT SYSTEM CONSTRUCTION

Comply with the construction standards of the WORLD SQUASH FEDERATION, length 9750mm, width 6400mm, diagonal length 11665 mm, Front wall height 4570 mm, back wall height 2130mm, Ceiling height 5000-6000mm, Front wall in height 482 mm, back wall in height 200 mm, Front tee line-height 1830mm, Ground tee line to back wall 4264mm, The half-court line bisects the ground service line and the back wall from centre to left and right, Service box is 1600mm square, Line width 50mm, Wall flatness error is $\pm 5/2000$ mm, The ground flatness error is ± 3 mm / 3000 mm (measured with a 3-meter ruler)



ALL-GLASS SQUASH COURT

All Glass Squash Court(also named Panoramic Squash Court, Glass Moveable Squash Court) is a very popular landscape squash court. It mainly serves international and domestic squash open tournaments and tournaments, as well as some large-scale commercial promotions. The all-glass squash court has strong flexibility, quick construction and installation, and easy disassembly and assembly.



INTERNATIONAL PROFESSIONAL SQUASH FEDERATION SQUASH COURT STANDARD

01 // TECHNICAL STANDARDS

Glass wall system:

12mm thick single-transparent tempered glass and professional hardware accessories

Squash court professional floor system:

fixed floor system and detachable competition sports wooden floor

Glass back wall system:

12mm thick tempered glass and hardware accessories

Lighting system:

illumination requires 300-500LUX for general training, and 1200LUX for professional competitions



02 //

All-glass Squash Court Combination

(1) Floor System Material Properties

Good rebound performance to the ball;

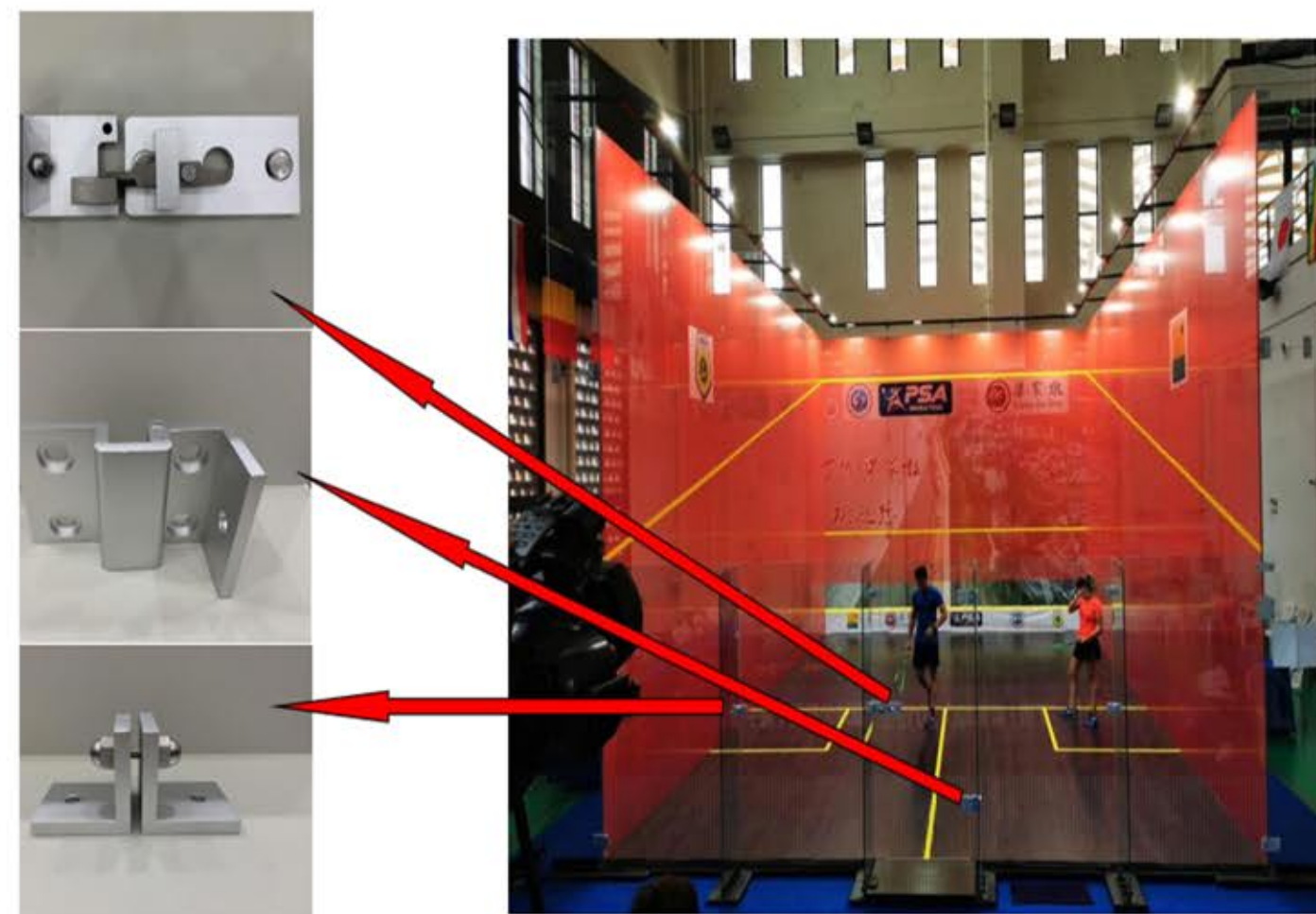
Shock absorption, shock resistance;

Good sound insulation;

Unique elastic cushion. The professional squash court sports wooden floor provides unique elasticity and bears heavy pressure, reducing the chance of shock injuries caused by athletes bouncing on the floor

(2) Construction Technology

The panel material is special sports wood flooring. The training court adopts fixed installation, and the competition court adopts detachable sports floor, which is conducive to quick installation, and easy disassembly.



03 //

Glass Wall System Performance of the All-glass Squash Court

(1) High-strength Hardware Accessories

The aluminum alloy parts specially customized by professional factories are more than 20% stronger than other aluminum parts, and the surface hardness reaches 16HW. And it has the advantages of beautiful appearance, strong fatigue resistance, easy installation and fine processing.

(2) Well Structured:

All structures of the glass wall system are made of 12mm thick safety tempered glass; all edges are ground; The outer side of the joint between the board and the board is evenly supported.

(3) Good Security Features

Safety performance is the focus of most attention. Each component of the system has been repeatedly tested for safety and can withstand strong impacts and heavy loads. If the door panel or the side wing support plate is accidentally broken, the glass will be shattered into small and blunt fragments, which will not cause harm to the human body.

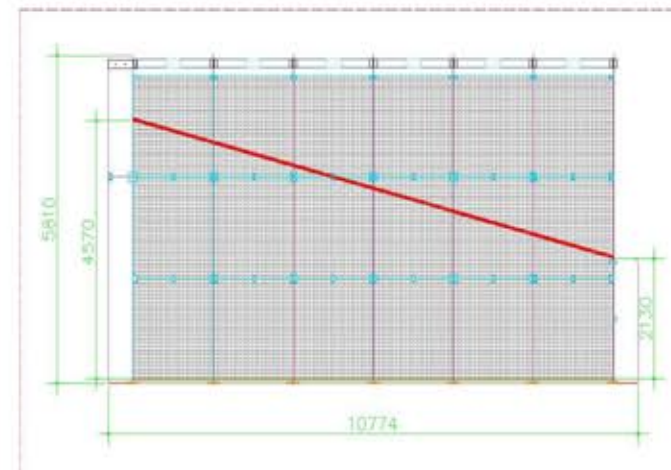
04 LIGHTING SYSTEM OF ALL-GLASS SQUASH COURT

The court lighting uses LED energy-saving lamps, and 16 lights are arranged throughout the court. Illumination requires 300-500LUX for general training, and 1200LUX for professional competitions with broadcast requirements.

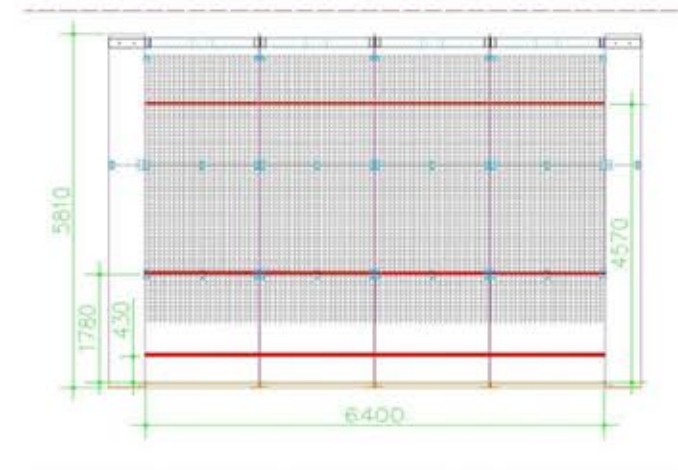


ALL-GLASS SQUASH COURT

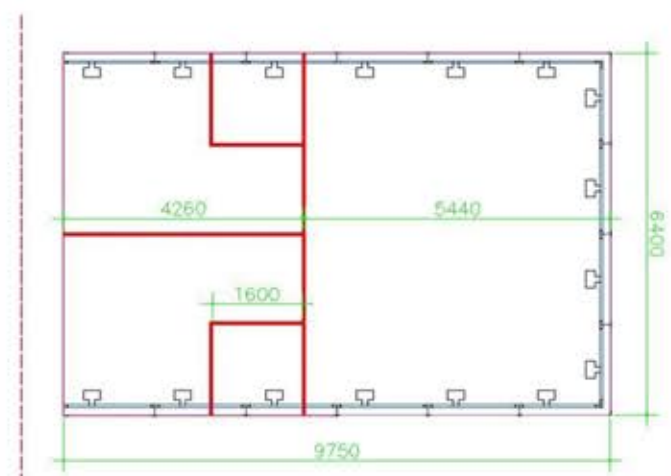
Side Wall Distribution of the All-glass Squash Court



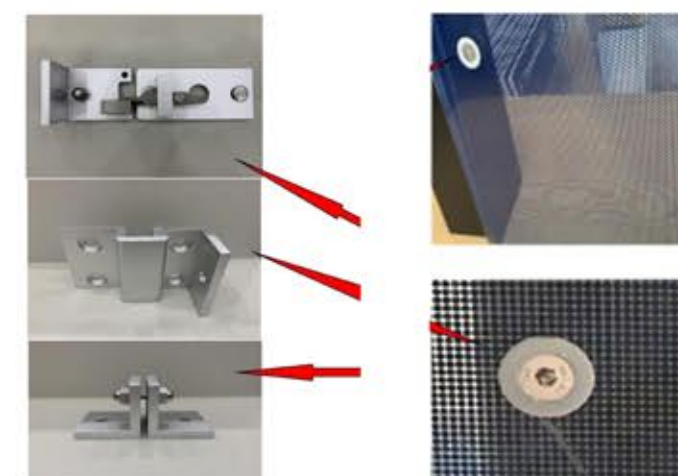
Front Wall Distribution of the All-glass Squash Court



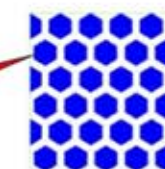
Light distribution of the All-glass Squash Court



Accessories display



All Glass Squash Court



Wall color sample



Shenzhen Futian CBD Padel Project

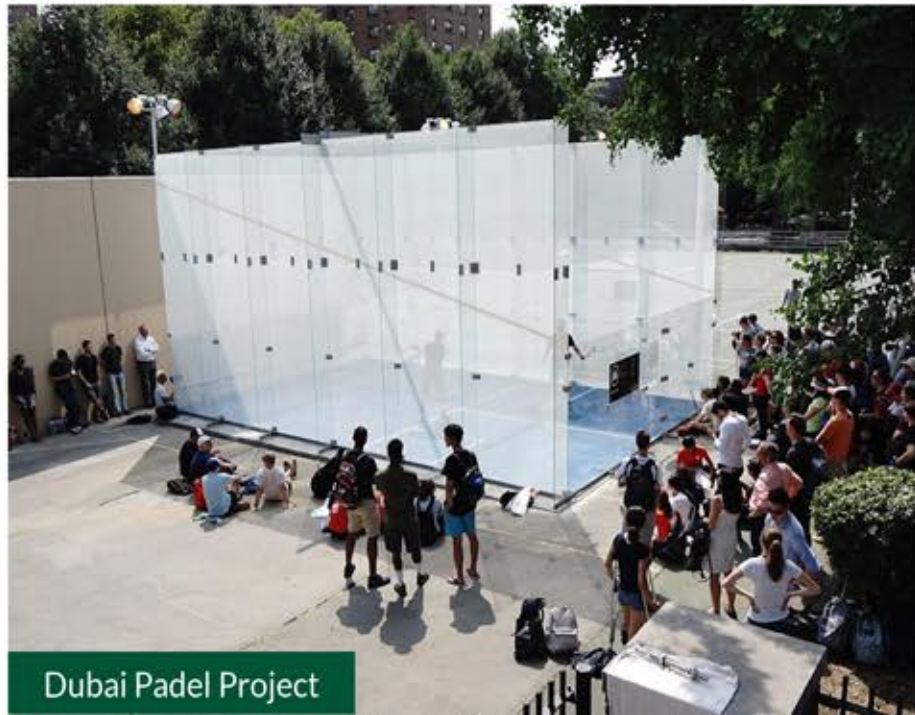


Italy Padel Project



LDK SQUASH COURT CASE

Chile Padel Project



Dubai Padel Project



Dongguan SKY Padel Project



Spain Padel Project

Prefabricated Light Steel Structure Multifunctional Gymnasium



13/14

1

FABRICATED LIGHT STEEL STRUCTURE

Advantages:

Prefabricated, Save time, Short construction period.

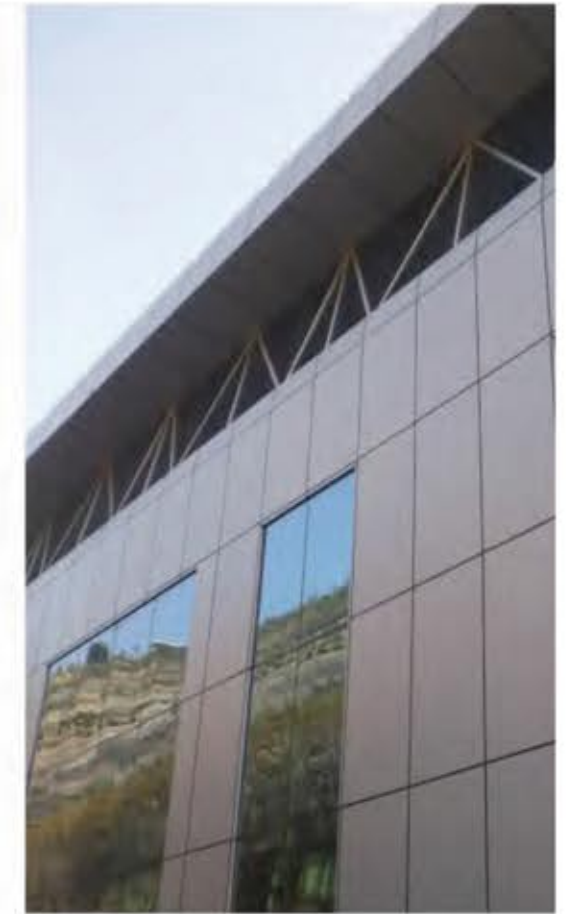
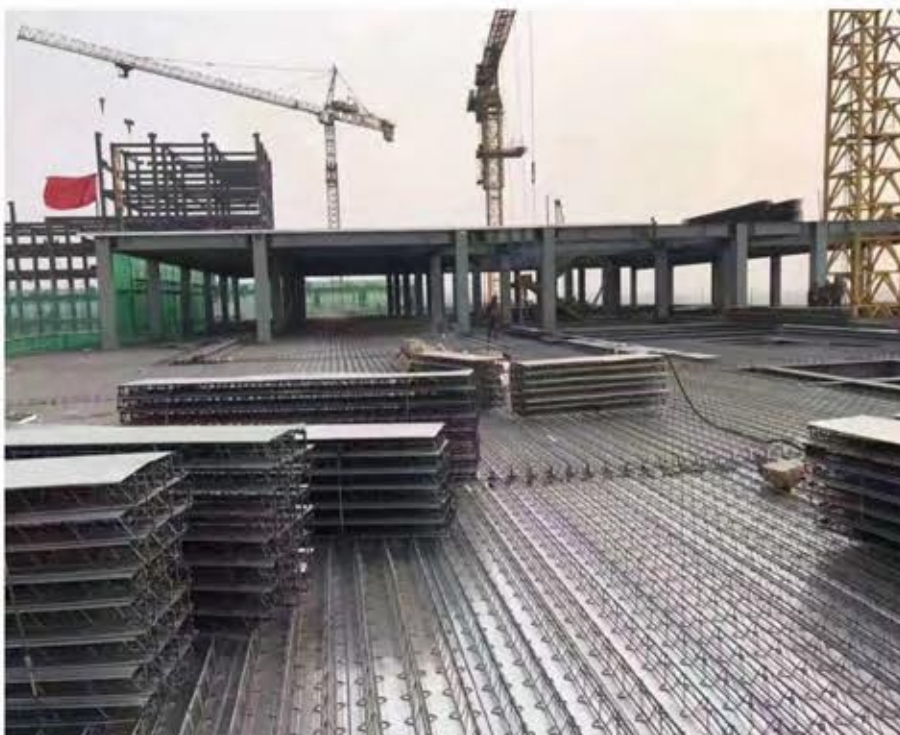
Easy to install.

Do not work on site.

Earthquake resistant.

Artistic and comfortable.

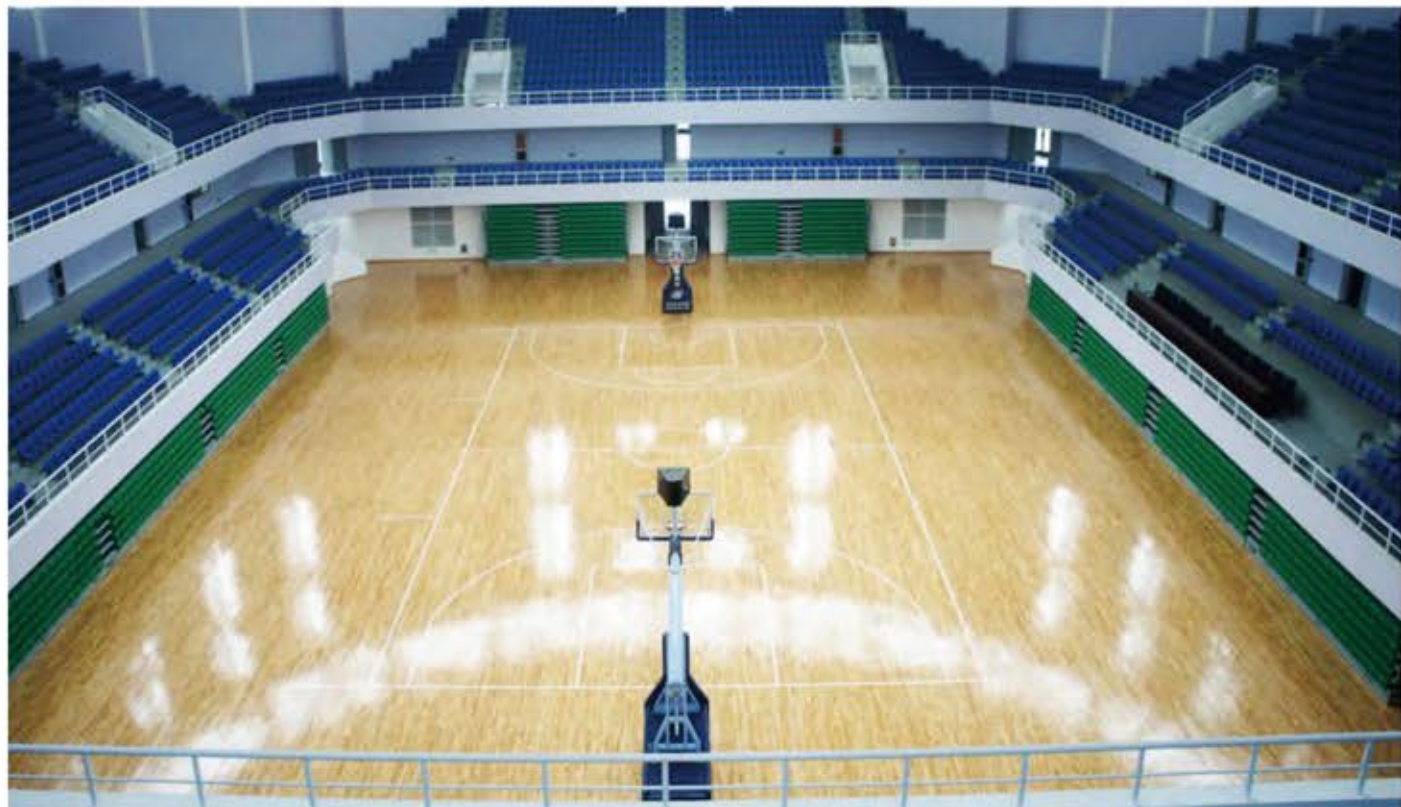
Environmentally friendly and recyclable.



2 MULTIFUNCTIONAL GYMNASIUM

Advantages:

Customizable size and multi-purpose gymnasium, including football field, basketball hall, badminton hall, tennis hall, etc.



Lights System

3



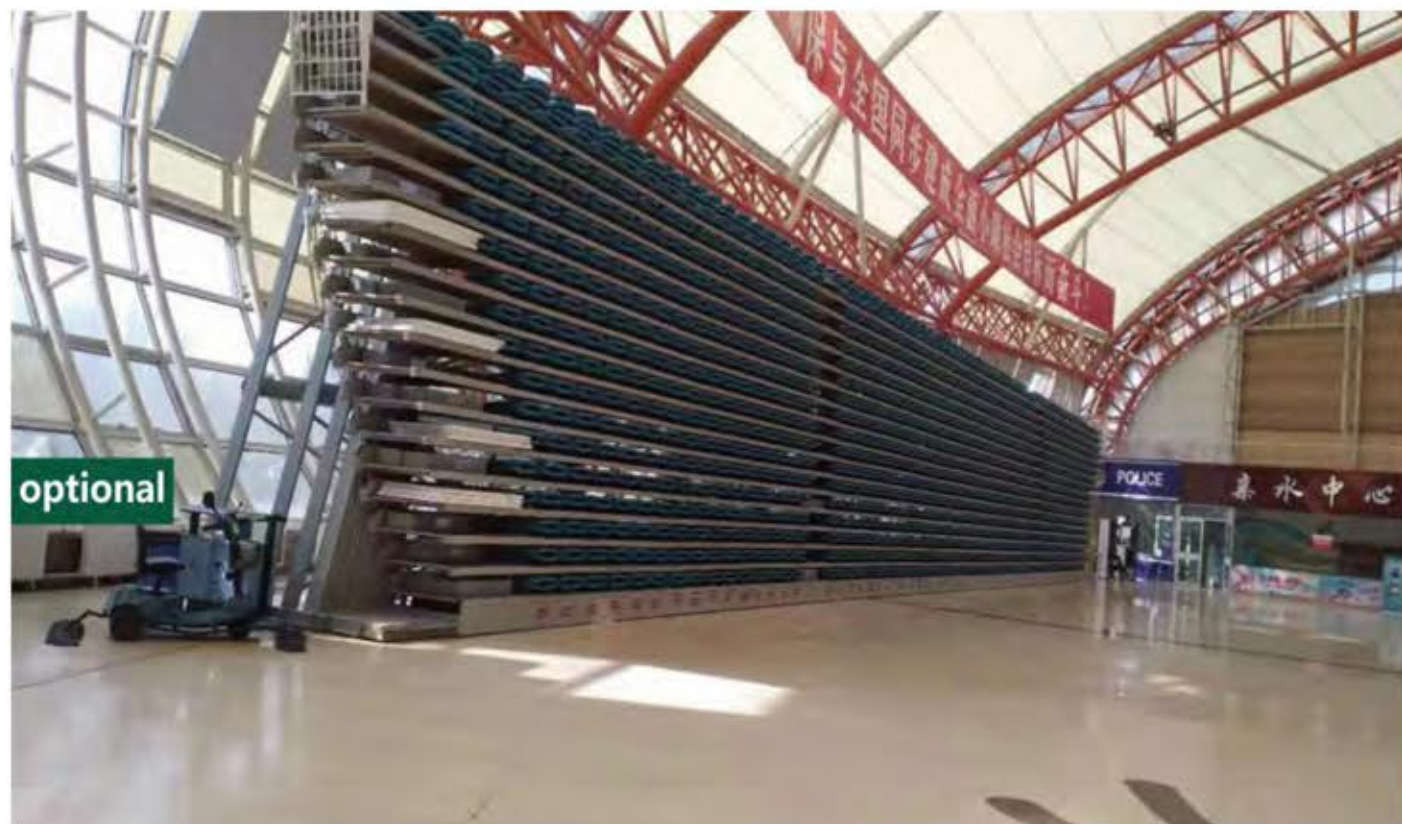
Led Screen System

4

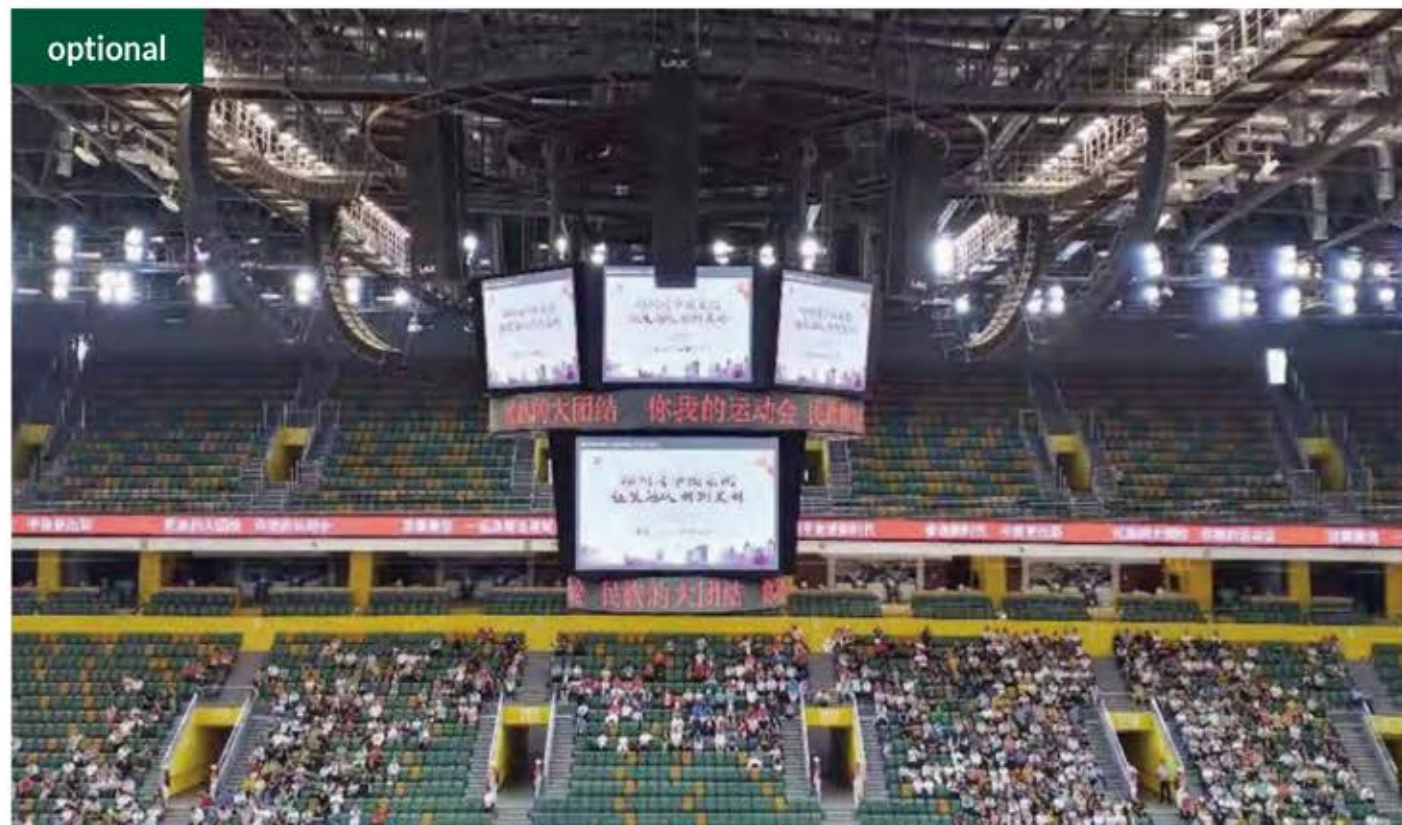


optional

5 Seating System--optional



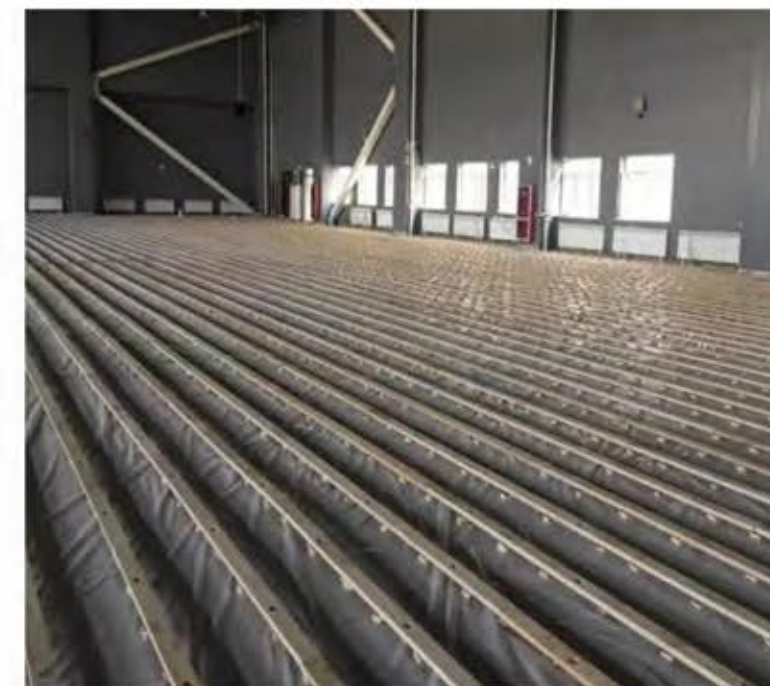
6 Sounding device system



Lights System

3

fence, ground (Wood or rubber floors), divider curtain, soccer goal, basketball stand, tennis column, badminton, etc.



Engineers can go to the stadium to guide the installation.