

Design | Engineering | Prototyping | Manufacturing | Assembly | Fulfillment | Shipping & Handling

红人

**Born to serve
POP merchandising
solution companies
with
efficient OEM manufacturing
and logistics**

致力于为品牌厂商和零售业提供店铺营销和产品陈列的解决方案

www.redmanretail.com



REDMAN

The Retail World Favors



|

WE
CAN
DELIVER

COMPANY PROFILE 01 /

Redman Global Sales Network

Product Introduction

Capabilities

FACILITIES 07 /

Metal Fabrication Facility

Wood Fabrication Facility

Plastic Fabrication Facility

Signage & Graphic

Assembly & Packaging

Shipping & Handling

CASE STUDIES 22 /

BRANDS & RETAILERS 35 /

Company Profile

Redman is one of the leading custom retail store fixture & P.O.P display manufacturers in China since 2002. Operating in Zhangjiagang, China, Redman has been serving big brands & retailers in North America, Europe, Japan & Australia with in-store marketing and retail merchandising solutions with efficient OEM manufacturing and logistics for over 24 years.

All of our scalable in-house services are performed under one roof. Our services range from design, engineering, manufacturing, assembly, packaging, to door to door shipping. Our flexible production capacity from our own facilities and localized vendors allow us to expand and contract quickly to handle any production challenge.

We are expert who efficiently respond to all requests and effectively communicate solutions that work. As top industry professionals, we recognize the importance of quality management. Our passion for innovation allows us to carry out our customers' passion for success.



BORN TO SERVE POP MERCHANDISING SOLUTION COMPANIES
WITH EFFICIENT OEM MANUFACTURING AND LOGISTICS



REDMAN HEADQUARTER
ZHANGJIAGANG, CHINA



REDMAN EUROPE B.V.
AMSTERDAM, THE NETHERLANDS



REDMAN USA INC.
LOS ANGELES, CALIFORNIA, USA





The **REDMAN** Advantage

Professional Teamwork

Cost & Time Saving

Quality Assurance

Timely Delivery

One-Stop Source

Long-Team Partnership

Satisfaction Guaranteed

CSR-Corporate Social Responsibility

Green Manufacturing



EMPLOYEES

300⁺

Employees



FACILITY
SIZE

80,000 m²

860,000 sqft



PRODUCTION
CAPACITY

5-10 x 40' CONTAINERS

Loaded and shipped out per day



LEAD
TIME

1-3 DAYS

Quotation

1-2 WEEKS

Prototype

3-6 WEEKS

Production

48 HOURS

Feedback

REDMAN Honors

EnMS Certificate

ISO 9001

ISO 14001

ISO 45001

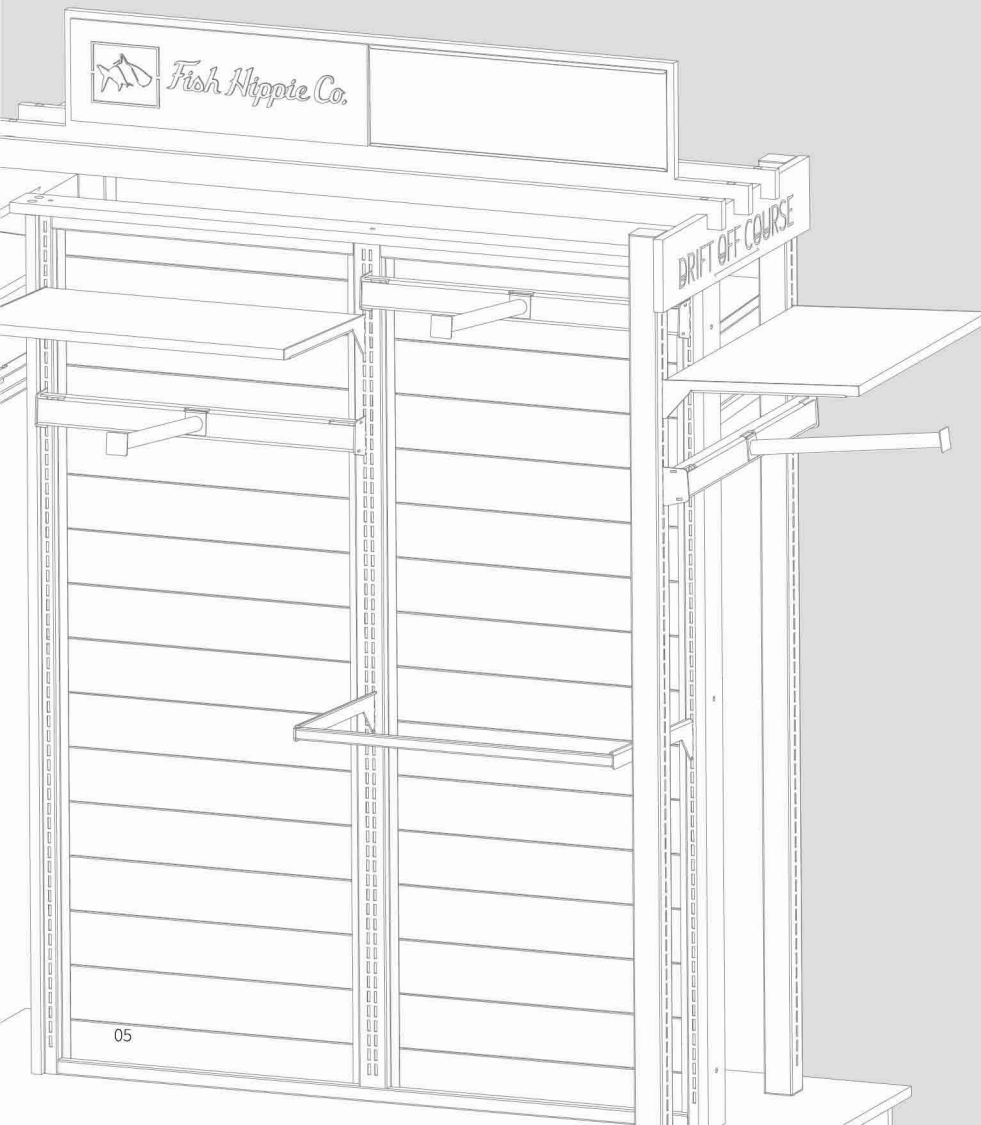


POP AI

CE



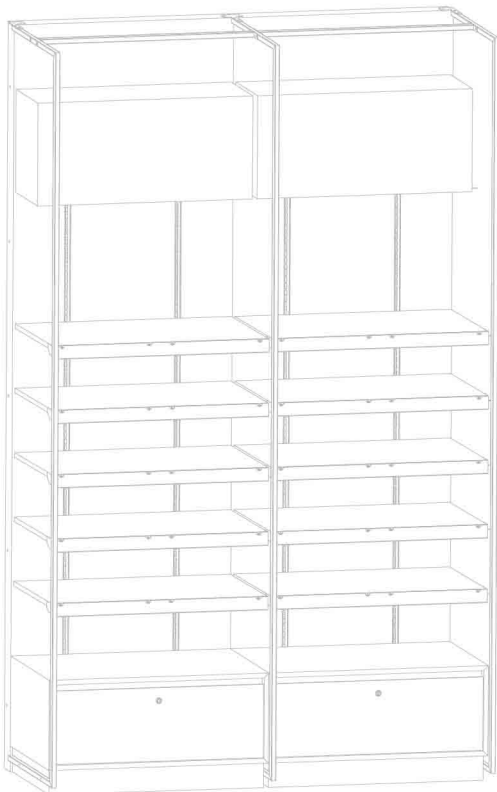
Capability Snapshot



- Metalworking
- Veneering
- Plank & Cabinets Assembly
- Plastic Fabrication
- Injection Molding
- Extrusion
- Printing
- Led
- Finishing

- Assembly & Kitting
- Distribution & Logistics
- Quality Control
- Estimate & Outsourcing
- Design & Engineering
- Project Management
- Warehousing
- Powder Coating
- 24/7-3 Shift Production

What Can We Do?



DESIGN

We use your design, and/or concept the idea from scratch.



ENGINEERING

Quality team of experienced in-house engineers.



PROTOTYPE

We develop prototypes for your project and will patiently work with you to make revisions until it's perfect.



MANUFACTURING

Our in-house mass manufacturing facility fits under one roof with state-of-art equipment and skilled workers & technicians to meet all of your expectations and project needs.



FULFILLMENT

You can count on us and our warehouses located worldwide with storage, assembly & re-pack, pick & pack, logistics, and drop ship.



INSTALLATION

We provide installation service by our own local team and/or can cooperate with third party installation companies.



METAL

Metal Fabrication Facility

MATERIALS

- Sheet Metal
- Steel Tube
- Steel Wire
- Stainless Steel

20,000 m²
Size (220,000 sqft)



100+ Employees
Personnel



20-30 T/Day
Production Capacity





Metal Fabrication

- ✓ Automated CNC Lasers
- ✓ Metal & Wire Bending Operations
- ✓ Brake Presses
- ✓ CNC Bending Center
- ✓ Roll Forming
- ✓ Crush & Mandrel Tube Bending
- ✓ Automated Wire Bending
- ✓ Tool & Die Shop
- ✓ Inline Turret Presses
- ✓ Tool Storage
- ✓ Stock Strip, Wire & Tube Gauges & Sizes
- ✓ Conveyor Belt / Assembly Line Up
- ✓ 6-axis Robotic Welders
- ✓ MIG Welding , TIG Welding , Laser Welding Available.
- ✓ Grinding & Polishing Stations
- ✓ Powder Coating Lines





Powder Coating Lines

PRE-TREATMENT

- Pre-Degreasing
- Ultrasonic Oil Removal
- Main Degreasing
- Water Rinsing
- Surface Conditioning
- Silane Treatment
- Deionized Water Rinsing
- Drying

SPRAYING & CURING

- Powder Coating
- Curing
- Cooling





Physical Vapor Desposition



Black Clear Powder Coated



Clear Powder Coated



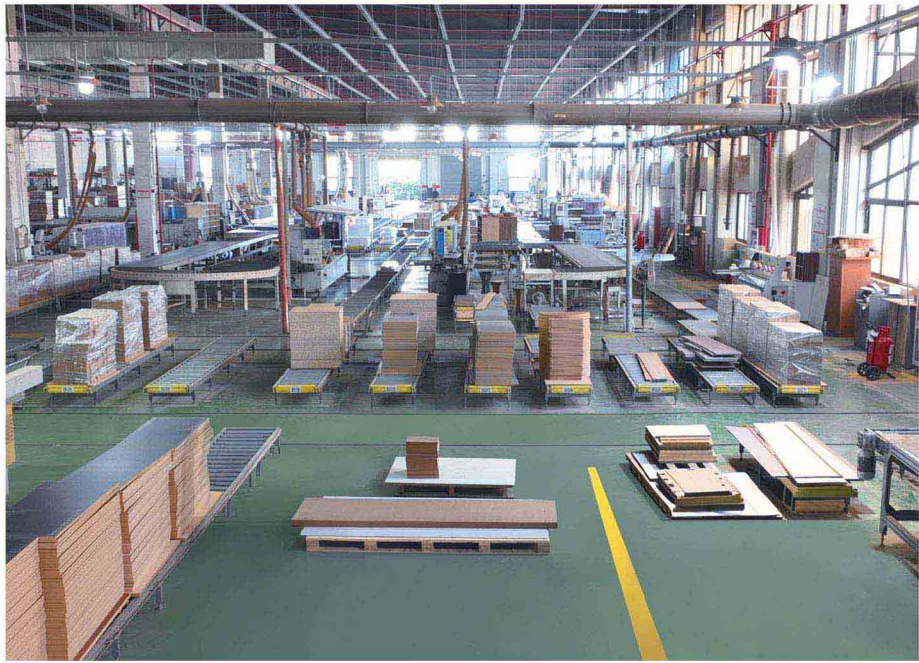
Polished Chrome Plated



Polished Stainless Steel



Brushed Stainless Steel



WOOD

Wood Fabrication Facility

15,000 m²
Size (160,000 sqft)



100+ Employees
Personnel



MATERIALS

Solid Wood

Partical Board

Plywood

Melamine

MDF

HPL



CNC Woodworking

- ✓ Automated CNC Machines
- ✓ Automated Edge Banding
- ✓ Automated High Pressure Laminating
- ✓ Table Saws
- ✓ Industrial Joiner Planers
- ✓ Air Ventilation & Dust Control
- ✓ Fire Protection Sprinkler System
- ✓ Pallets Made Out of Fumigated and Certified Plywood

Wood Veneering

- ✓ Sitth Veneers In-house
- ✓ Spray Lamination
- ✓ Veneer Hot Press
- ✓ Veneer Edgebanding

Plank & Cabinet Assembly

- ✓ Assembly Presses
- ✓ Special Assembly Group
- ✓ Plank Cold Press
- ✓ Hand Finishing



Painting

- Ink
- N.C. Lacquer
- Polyurethane Paint
- Wet Paint
- Synthetic Resin Paint
- High-Gloss Piano Lacquer
- UV-Curable Paint



Veneer with Clear Coat Stain



Solid Wood with Clear Coat Stain



High Pressure Laminate (HPL)



Melamine (LPL)



Water/Oil Base Wet Paint



Membrane with PVC Film



SIGNAGE & GRAPHIC

Graphic Shop

- ✓ Digital Printers
- ✓ Silk Screen Printing
- ✓ Laminating
- ✓ High Resolution & Clarity
- ✓ Large Format Capacity
- ✓ Dimensional Illuminated signs



Assembly & Packaging Plant & Warehouses in USA & Europe



ASSEMBLY & PACKAGING

Packaging Facility

13,000 m²
Size (145,000 sqft)



70+ Employees
Personnel



Production Capacity

- ✓ 5-10 containers loaded per day
- ✓ Quality control and inspection of all parts before shipping
- ✓ 4 conveyers for quality check
- ✓ Assembly, Repack & Warehousing in USA and Holland are available.



PLASTIC

Plastic Fabrication Facility

2,500 m²
Size (28,000 sqft)



20+ Employees
Personnel



MATERIALS

Acrylic

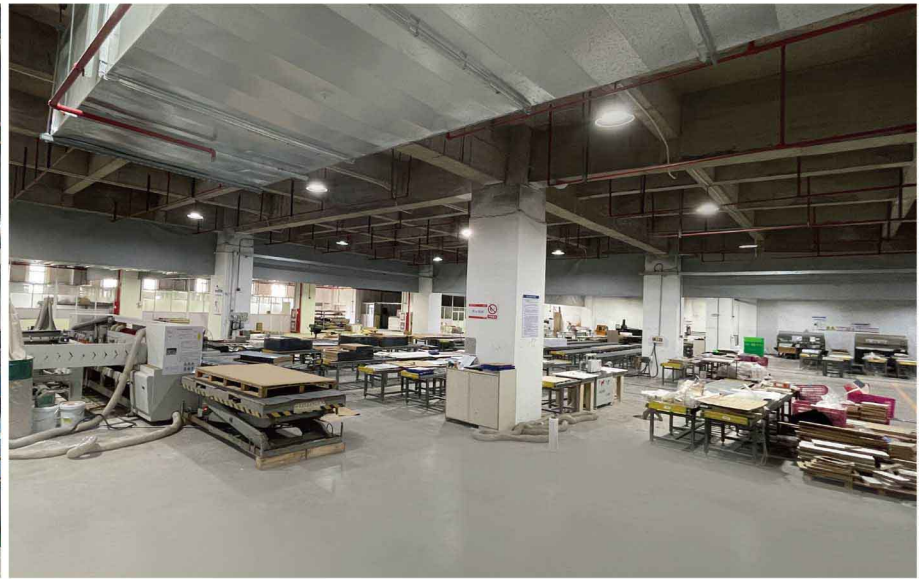
PETG/PE

PS/HIPS

PVC

ABS

PC

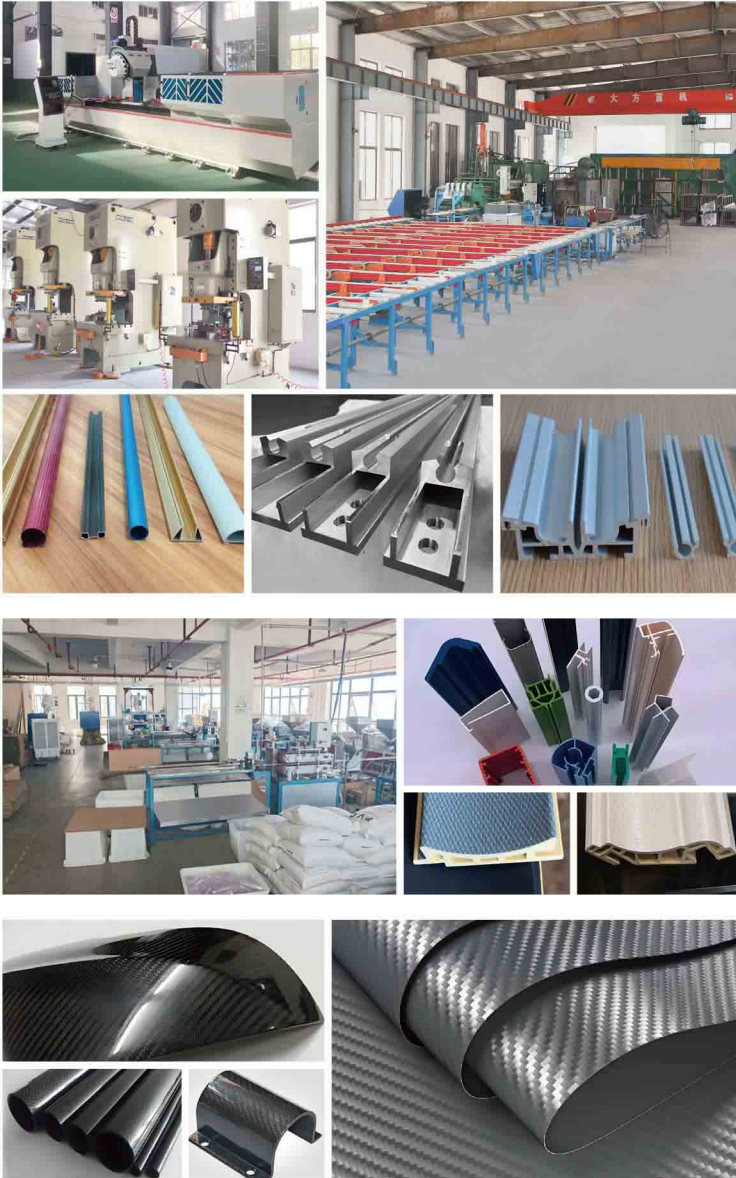


Plastic Fabrication

- Laser Cutting
- CNC Routers
- Glue & Assembly
- Diamond Polishers
- Heat Oven

Plastic Injection Molding

- 3 Presses / 1500 Tons
- 12 Presses / 700 Tons
- 10 Presses / 250 Tons
- Pad Printing
- 5 Presses / 1000 Tons
- 5 Presses / 500 Tons
- Painting & Decorating
- Ultrasonic Welding



LOCAL OUTSOURCING

Aluminum Extrusion

Aluminum Fabrication

- Punch
- CNC Machining
- Welding

Anodizing

- Silver
- Bronze
- Black

Plastic Extrusion

MATERIALS

- PVC
- ABS
- HIPS
- PC
- Acrylic

Carbon Fiber Products

- Hand Lay-up
- Vacuum Bag Molding
- Autoclave Molding
- Pultrusion



Power Supply

- ✓ Constant Voltage Driver
- ✓ Constant Current Driver
- ✓ Dimmable Driver
- ✓ Waterproof Driver
- ✓ Switching Mode Power Supply



LED Products

- ✓ Aluminum LED Strip
- ✓ Flexible LED Strip
- ✓ Neon Led Strip
- ✓ Led Lighting Panel
- ✓ Illuminated Signs
- ✓ LED Modules
- ✓ Lighting Box



TESTING LABORATORY



- ✓ AC/DC Power, Current, and Voltage Meter
- ✓ Carton Bursting Strength Tester
- ✓ Cross-Cut Tester
- ✓ Gloss Meter
- ✓ Carton Edge Crush Tester

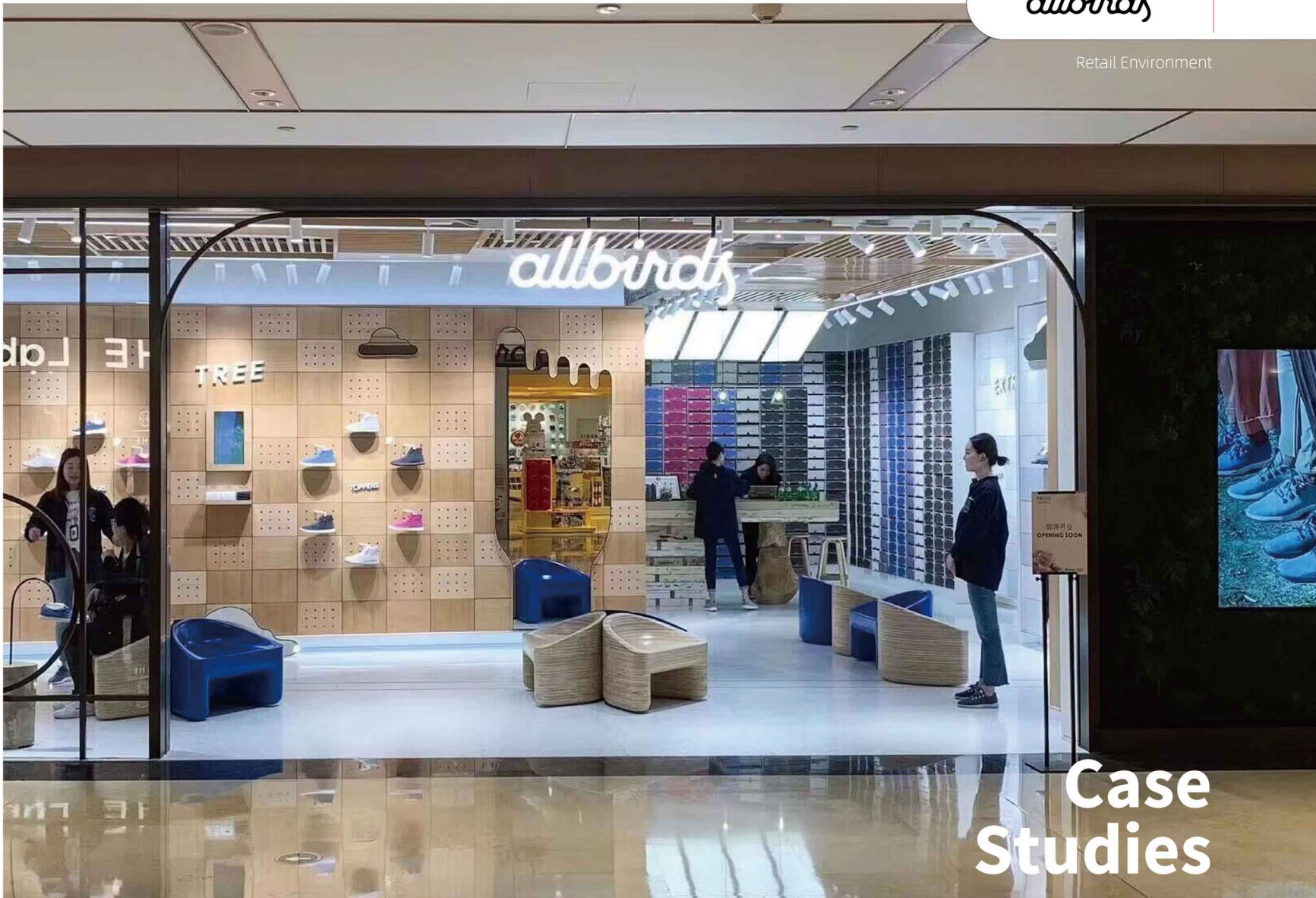
- ✓ Color Difference Meter
- ✓ Single Arm Drop Tester
- ✓ Salt Spray Test Chamber
- ✓ Wood Moisture Meter
- ✓ High and Low Temperature Test Chamber

- ✓ Vibration Test Machine
- ✓ Standard Light Box
- ✓ Coating Thickness Gauge
- ✓ 100KG Standard Weight Set
- ✓ Carton Compression Tester

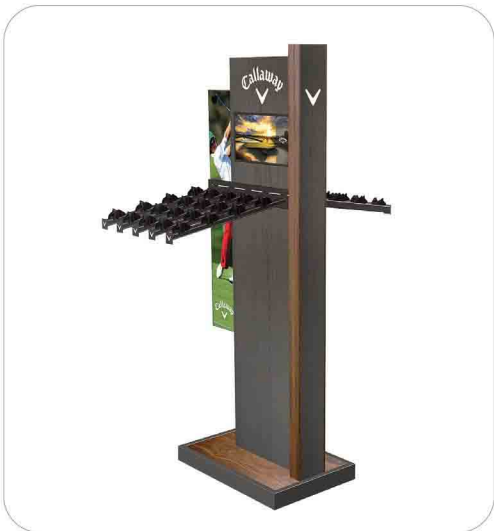


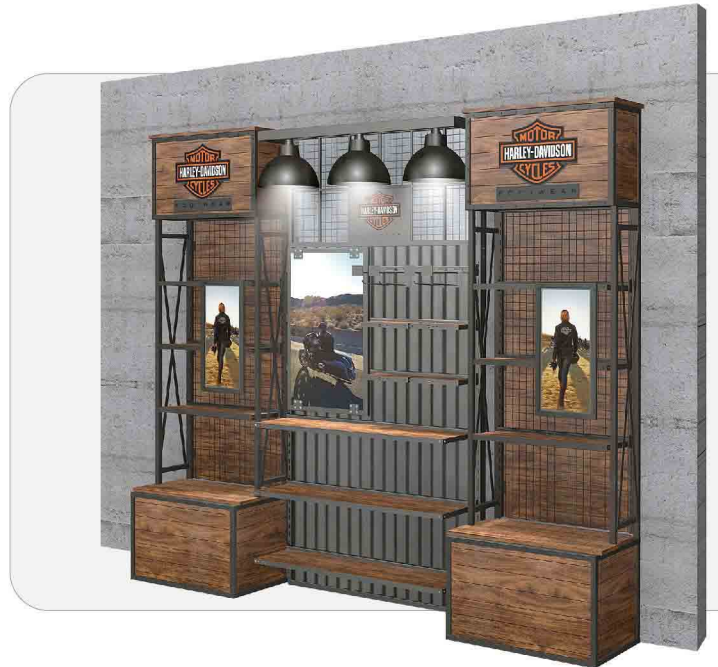
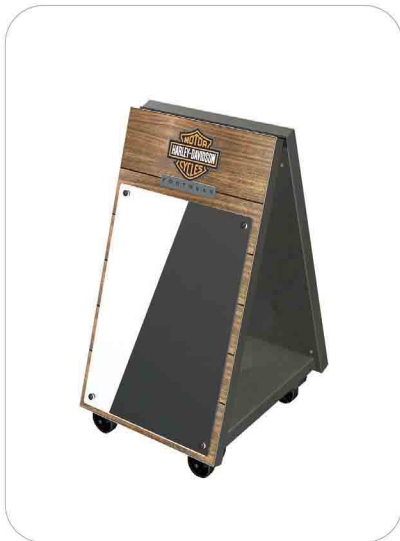
allbirds

Retail Environment

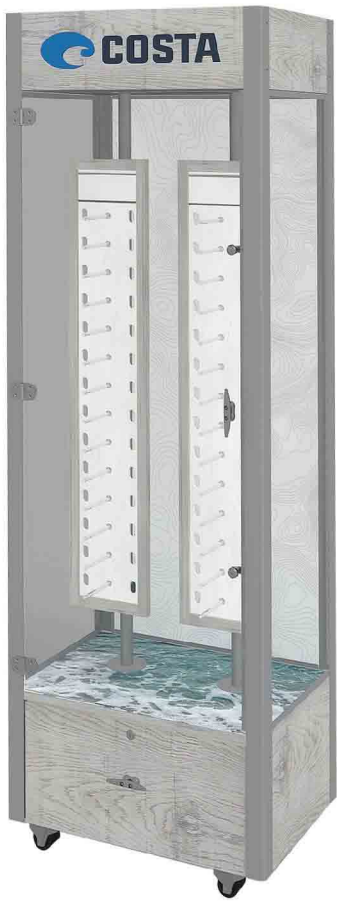


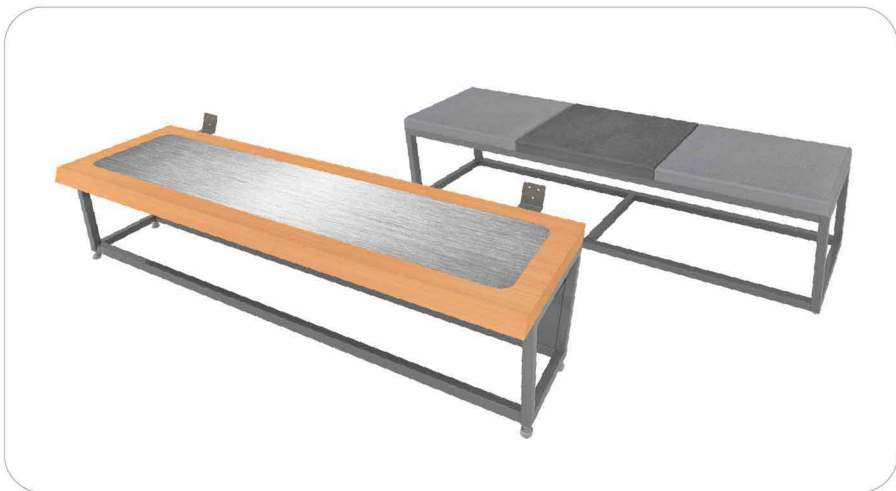
**Case
Studies**





COSTA





Maui Jim



BORN TO SERVE POP MERCHANDISING SOLUTION COMPANIES
WITH EFFICIENT OEM MANUFACTURING AND LOGISTICS

VANS



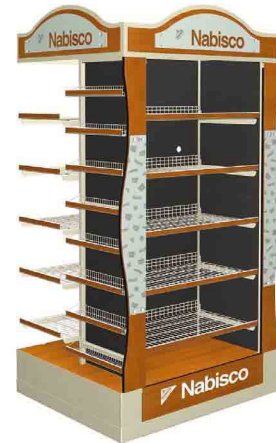
dyson



BORN TO SERVE POP MERCHANDISING SOLUTION COMPANIES
WITH EFFICIENT OEM MANUFACTURING AND LOGISTICS



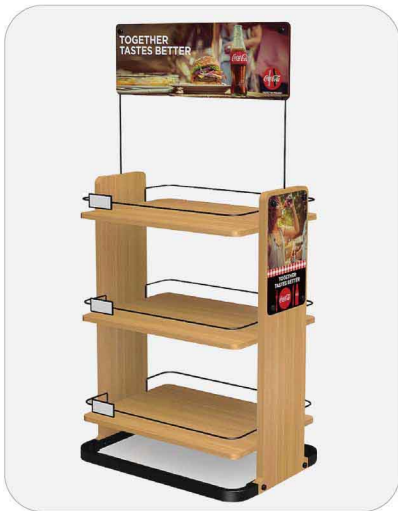
KRAFT



MARS







Brands & Retailers

Our POP & fixture customers choose REDMAN to satisfy their brand and retail chain store clients.

Apparel



Sport



Cosmetics



Electronics



Food & Drink



Home Improvement, Hardware & Tools



Automotive & Vehicle



Supermarket & Convenience Store





2002-2026

**ONE POINT OF CONTACT
COUNTLESS POSSIBILITIES**

Redman Corporation

Redman Import & Export Limited

111 Tangqiao Road,
Zhangjiagang, Jiangsu, China 215618

Phone: +86-512-5816 5800
Fax: +86-512-5816 5801, 5816 5802, 5816 5818
Email: info@redmanretail.com
Website: www.redmanretail.com

- Mr. Chris Zijiao Lu
Vice President of Sales & Marketing
US Cell: +1 (626) 258 7698
Email: chris@redmanretailusa.com
- Mr. Don Xu, General Manager
Phone: +86-512-5816 5810
Cell: +86-189 2199 8566
Email: don@redmanretail.com

Redman Europe B.V.

Vennestraat 19, 2161 LE,
Lisse, The Netherlands

Tel: +31 (0) 252 74 55 68
Fax: +31 (0) 252 74 55 47
Email: europe@redmanretail.com

- Mr. Stephen Chen, Marketing Director
Mobile: +31 (0) 6 55 87 29 66
Email: stephen@redmanretail.eu
- Mr. Pieter Kapteijn, Account Manager
Mobile: +31 (0) 6 10 64 01 65
Email: pieter@redmanretail.eu

Redman USA Inc.

18233 Railroad Street,
City of Industry, CA 91748, U.S.A.

Phone: (626) 839-8533
Fax: (626) 839-8081
Email: usa@redmanretail.com

- Mr. Stephen Lu, Sales Manager
Cell: (626) 297-3599
Email: stephen@redmanretail.com

Midwest Office:

- Mr. Faiek Aljubouri, Director of Sales
916 Woods Drive, Hartland, WI 53029, U.S.A.
Cell: (262) 271-4348
Email: faiek@redmanretail.com