



MONALISA WEBSITE

 **MONALISA** TILES

MONALISA GROUP CO.LTD
GUANGDONG MONALISA TRADING CO.LTD.

Add: 12th Floor, Monalisa Tower, Building T2, Poly Center, Wenhua Road,
Lecong Town, Shunde District, Foshan City, Guangdong Province, P.R. China
Postcode: 528211 E-mail: info@fs-monalisa.com
Tel: 0086-757-86808731 Fax: 0086-757-86808281
Website: www.fs-monalisa.com(EN) www.monalisa.com.cn(CH)

* The picture is for reference only, the specific delivery shall prevail.

2026

MONALISA

COMPREHENSIVE MATERIAL SELECTION MANUAL



MONALISA WEBSITE



MONALISA GROUP CO.LTD
GUANGDONG MONALISA TRADING CO.LTD.

Add: 12th Floor, Monalisa Tower, Building T2, Poly Center, Wenhua Road,
Lecong Town, Shunde District, Foshan City, Guangdong Province, P.R. China
Postcode: 528211 E-mail: info@fs-monalisa.com
Tel: 0086-757-86808731 Fax: 0086-757-86808281
Website: www.fs-monalisa.com(EN) www.monalisa.com.cn(CH)

* The picture is for reference only, the specific delivery shall prevail.

2026

MONALISA

COMPREHENSIVE

Material selection manual



MONALISA

ABOUT MONALISA

Guangdong MonaLisa Trading Co., Ltd. is a wholly-owned subsidiary of MonaLisa Group Co., Ltd., which undertakes the export business of its own Models.

Monalisa Group Co., Ltd. (hereinafter referred to as Mona Lisa Group) is located in Xiqiao Town, Nanhai District, Foshan City. It is a high-tech, A-share listed ceramics company integrating scientific research and development, creative design, professional Modelion and marketing. The MonaLisa Group was established in 1992, transformed from collective ownership to private enterprise in 1998, and established a joint stock company in 2015. It was listed on the Shenzhen Stock Exchange in 2017 (stock code: 002918). Monalisa Group has ten holding subsidiaries and four modern Modelion facilities for building ceramics. It has 37 Modelion lines in Xiqiao of Foshan, Qingyuan of Guangdong, Tengxian County of Guangxi and Gao'an of Jiangxi, producing such Models as ceramic tiles, porcelain slabs and porcelain art.

Monalisa Group has three brands of "MonaLisa", "QD" and "merqi". It has established more than 4,000 franchised store and marketing showrooms covering all provinces, cities and autonomous regions of China, providing timely and thoughtful services for consumers.

Nature Tile Series

Imperial Signature

1600x3200mm 63"X126"	Bianco Carrara	03
	Calacatta Oro	04

1200x2700mm 48"X108"	WUJI Stone	05
--------------------------------	------------	----

900x2700mm 36"X108"	Oriental-Minimal Luxury Slab	07
	Flowing Light Sintered Stone	09

1200x2400mm 48"X96"	Galaxy Series	11
-------------------------------	---------------	----

900x1800mm
36"X72"

1060x1600mm 42"X63"	WUJI Stone	13
-------------------------------	------------	----

Elemental Truth Collection

600x1200mm 24"X48"	WUJI Stone	19
	Galaxy Series	23
	Matter Matte Series	25

750x1500mm 30"X60"	Legacy Jade Series	28
------------------------------	--------------------	----

Modern Era

600x1200mm 24"X48"	Rustic Stone Series	35
	Matter Matte Series	38
	Glazed Antique Series	40
	Vituosha Series	43
	Classic Stone Era	55

Enduring Foundation

600x1200mm 24"X48"	Paris Impression	59
	Antique Tile	60

600x600mm
24"X24"

Enduring Foundation

300x300mm 12"X12"	Matt Tile	69
400x400mm 24"X24"		

600x600mm 24"X24"	Milan Stone Elegance	72
	Classic Stone Era	73

800x800mm
32"X32"

300x600mm 12"X24"	Titian Stone	77
-----------------------------	--------------	----

New Material Series

SPC Flooring

182x1200mm 7"X48"	Core Collection	85
	Authentic Wood Grain Series	91

288x1542mm
9"X60"

Full Furniture

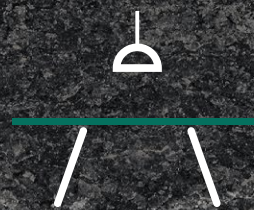
UNLIMITED EXPANSION TO EVERY APPLICATION

The Super Sintered Stone of MONALISA Combine Advanced Technical Features
And Refined Aesthetic Qualities, Granting Unlimited Solutions In Walls And Floors,
Indoor And Outdoor Applications.



KITCHEN:

Kitchen Countertops
And Partitions



DESKTOP

Suitable For Dining
Tables And Desk Tops



TEA TABLE:

Suitable For Coffee
Table Tops



STORE:

Merchandise Display
Countertop



BATHROOM:

Countertops And
Partition



BALCONY:

Outdoor balcony with
window sill



FLOOR:

Indoor And Outdoor
Walls Floor



WALL:

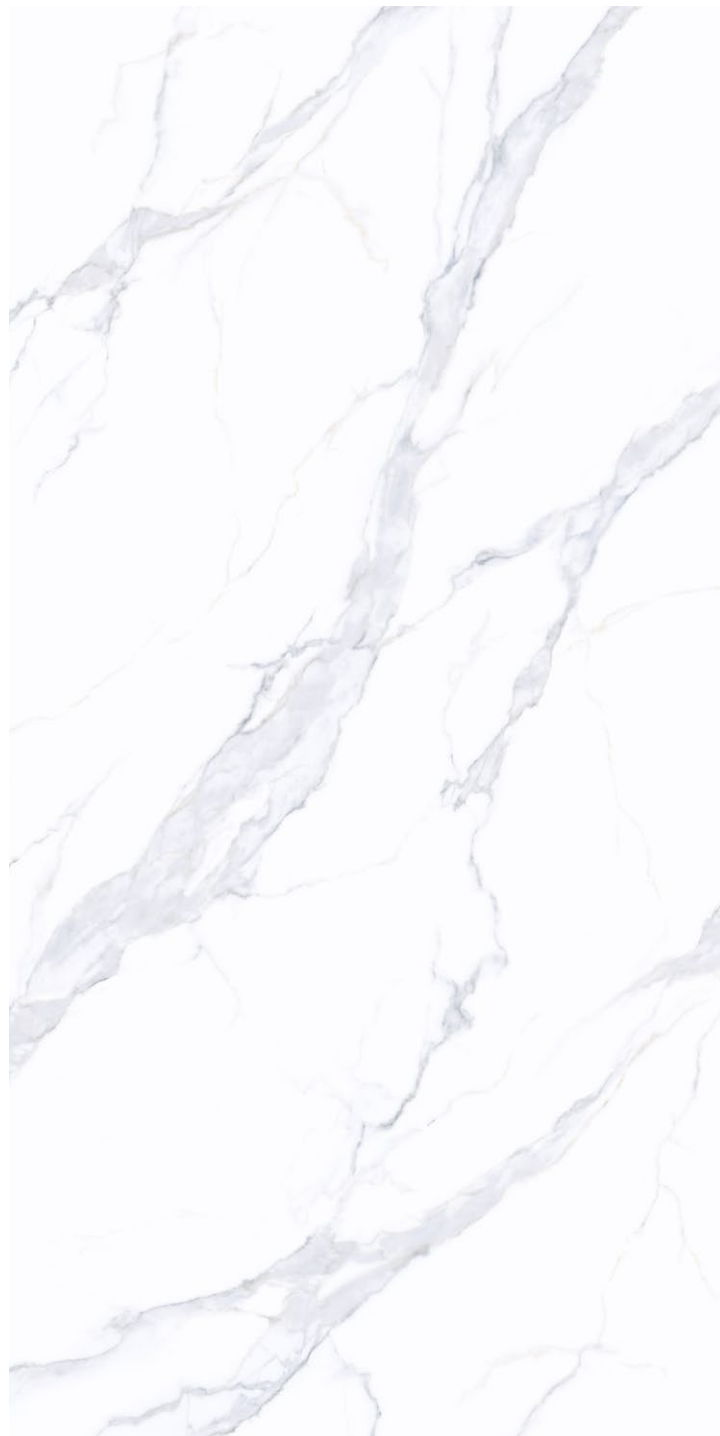
Indoor And
Outdoor Walls

IMPERIAL SIGNATURE

Only what is forged by time deserves to be called "Imperial Signature." This collection is our contemporary tribute to natural luxury stone. Adhering to imperial-grade standards, we source rare minerals from across the globe. Utilizing cutting-edge digital glaze technology, we meticulously recreate the veining and textures formed over millions of years. More than just a surface, it is an emblem of taste—crafted for connoisseurs who seek the extraordinary. With Imperial Signature, every glance becomes a dialogue with timeless elegance.



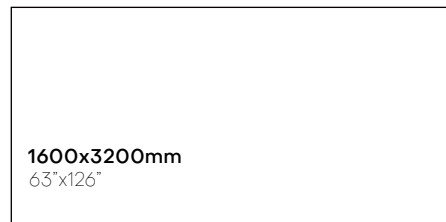
Bianco Carrara



Phases:1
Glazed Soft-polished

Model Dimensions:
1600x3200mm 63"x126" ± 12mm

Model Number:
160-320DBP12357RM



1600x3200mm
63"x126"



Roman stone beyond the era, redefining luxury.

Calacatta Oro



Phases:1
Glazed Soft-polished

Model Dimensions:
1600x3200mm 63"x126" ± 12mm

Model Number:
160-320DBP12358RM

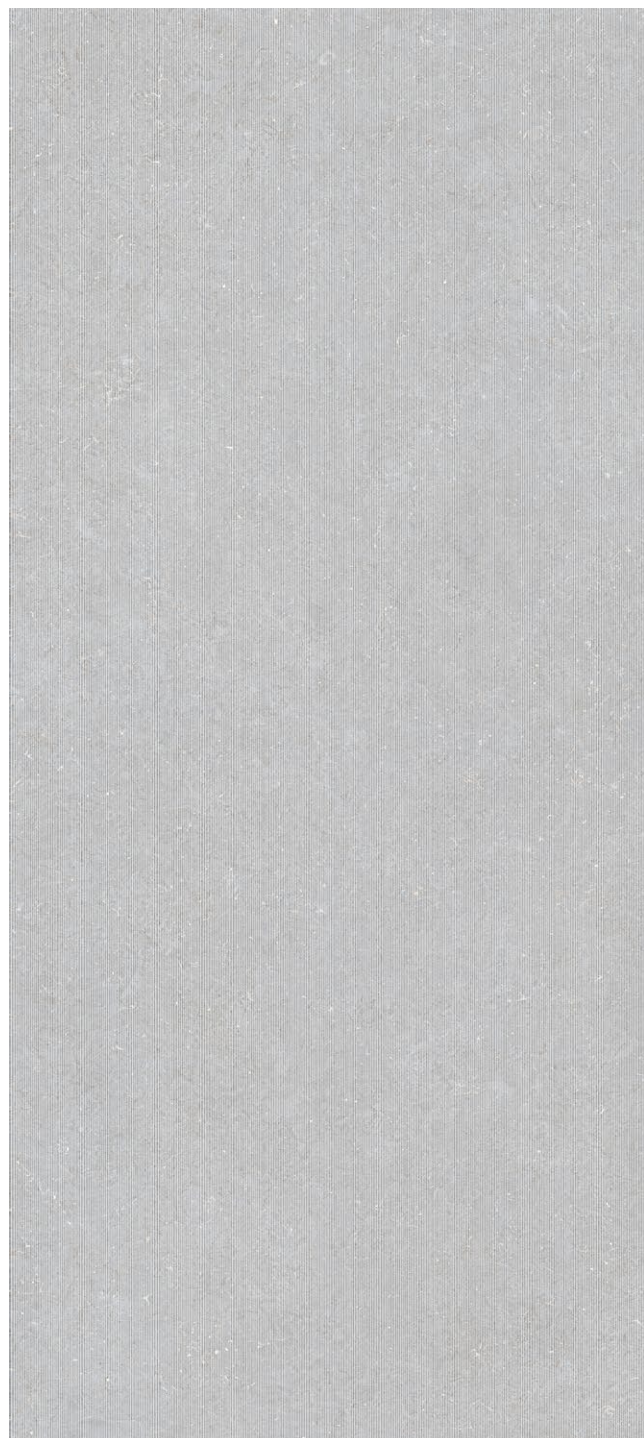


1600x3200mm
63"x126"



Roman stone beyond the era, redefining luxury.

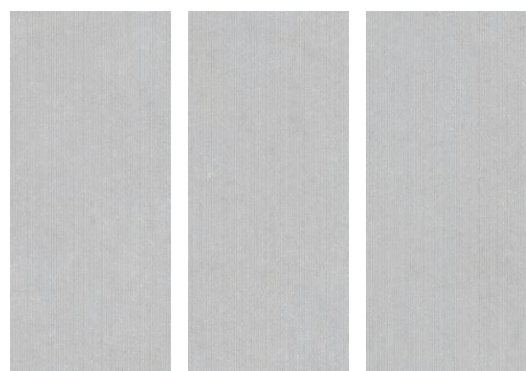
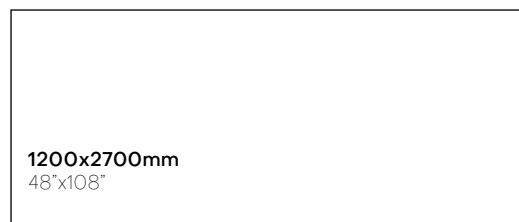
WUJI Stone



Phases:3
Glazed-matt

Model Dimensions:
1200x2700mm 48"x108" ± 9mm

Model Number:
120-270FEG10123M



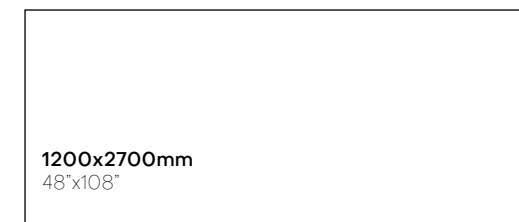
A boundless stone realm, exploring infinite visual possibilities.



Phases:2
Glazed-matt

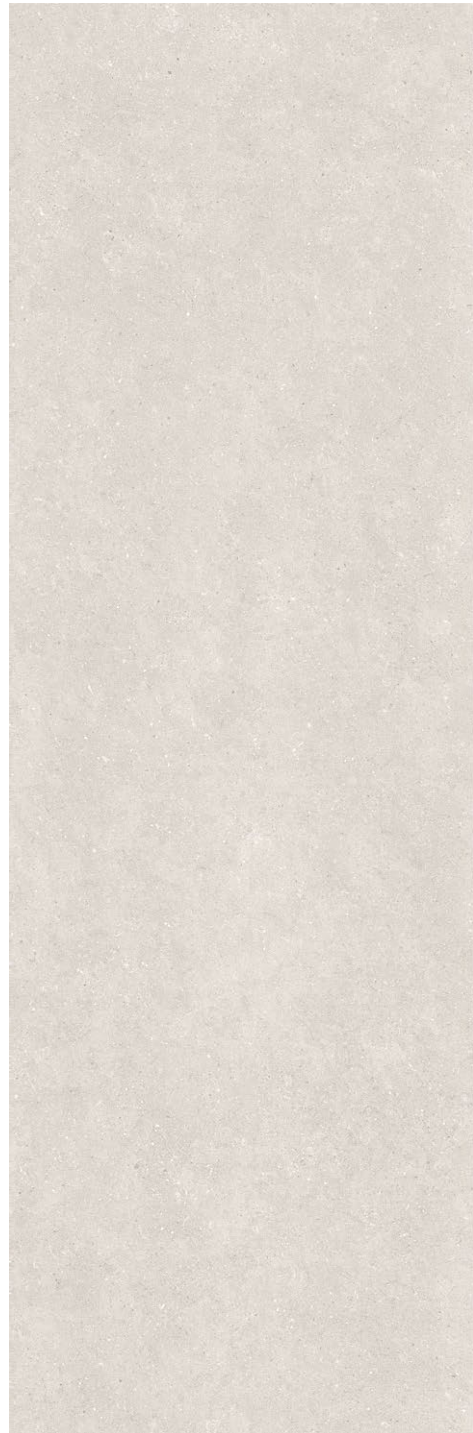
Model Dimensions:
1200x2700mm 48"x108" ± 9mm

Model Number:
120-270FEG10113M



A boundless stone realm, exploring infinite visual possibilities.

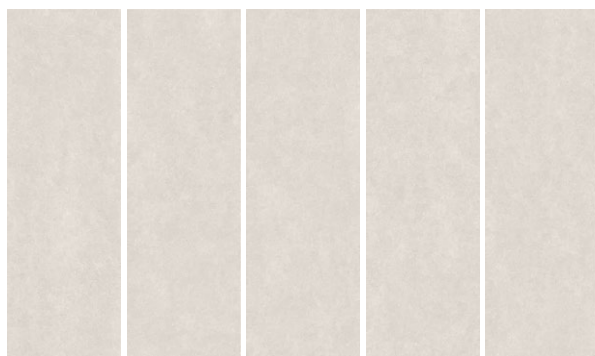
Oriental·Minimal Luxury Slab



Phases:5
Glazed-matt

Model Dimensions:
900x2700mm 36"x108" ± 9mm

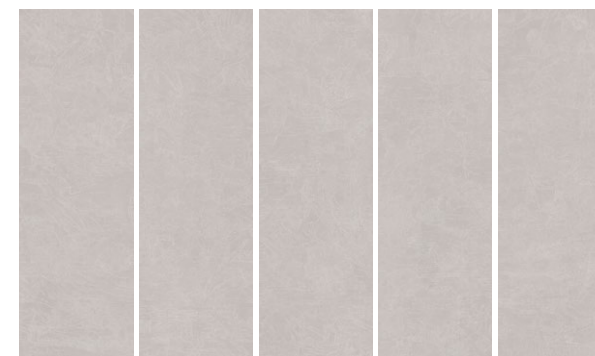
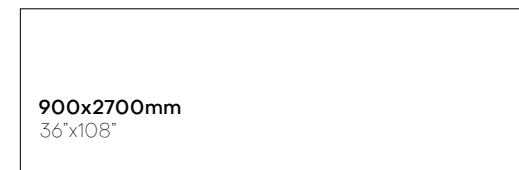
Model Number:
90-270FDK09003M



Phases:5
Glazed-matt

Model Dimensions:
900x2700mm 36"x108" ± 9mm

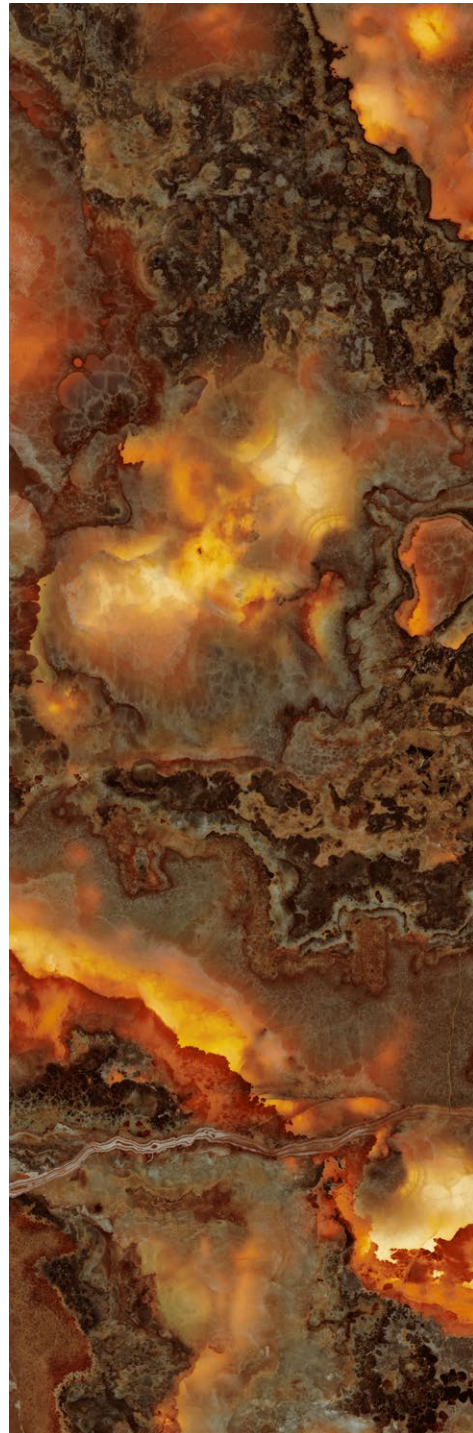
Model Number:
90-270FDK09008M



The blend of oriental style and modern luxury, interpreting elegant living.

The blend of oriental style and modern luxury, interpreting elegant living.

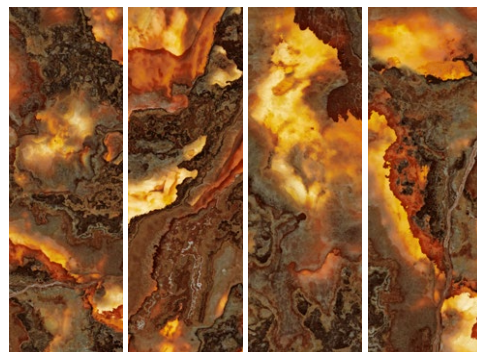
Flowing Light Sintered Stone



Phases:4
Glazed-matt

Model Dimensions:
900x2700mm 36"x108" ± 9mm

Model Number:
90-270DBY09340M



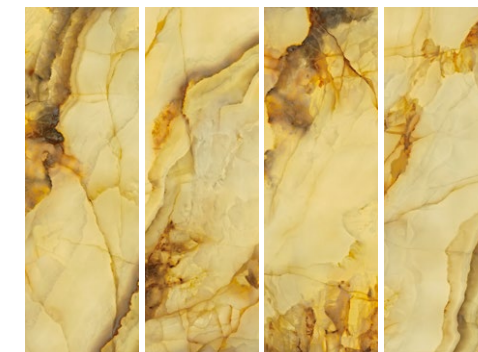
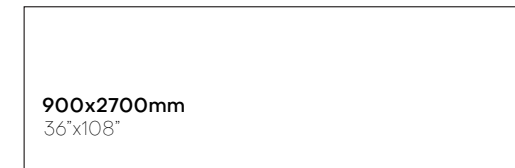
A timeless masterpiece like the Monalisa, endowing spaces with elegant charm.



Phases:4
Glazed-matt

Model Dimensions:
900x2700mm 36"x108" ± 9mm

Model Number:
90-270DBY09398M



A timeless masterpiece like the Monalisa, endowing spaces with elegant charm.

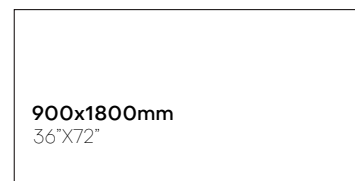
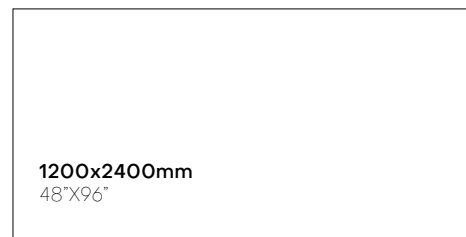
Galaxy Series



Phases:4
Glazed-Soft Polished

Model Dimensions:
900x1800mm 36"x72" ± 10mm
1200x2400mm 48"x96" ± 10mm

Model Number:
90-180FMZ10007RPM
120-240FMZ10007RPM



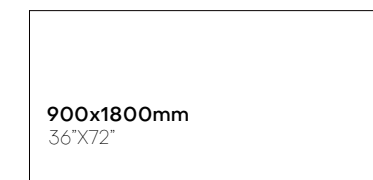
Brilliant like the galaxy stars, illuminating spatial art.



Phases:6
Glazed-Soft Polished

Model Dimensions:
900x1800mm 36"x72" ± 10mm
1200x2400mm 48"x96" ± 10mm

Model Number:
90-180FMZ1009RPM
120-240FMZ1009RPM



Brilliant like the galaxy stars, illuminating spatial art.

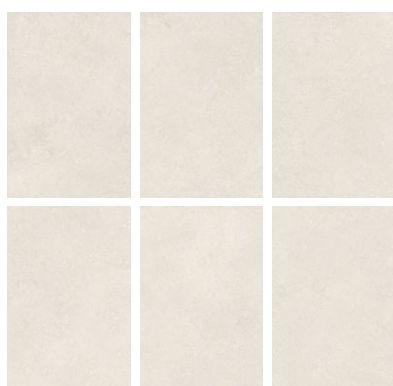
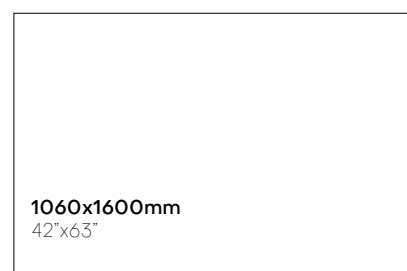
WUJI Stone



Phases:6
Glazed-matt

Model Dimensions:
1060x1600mm 42"x63" ± 12mm

Model Number:
106-160FEG10111M



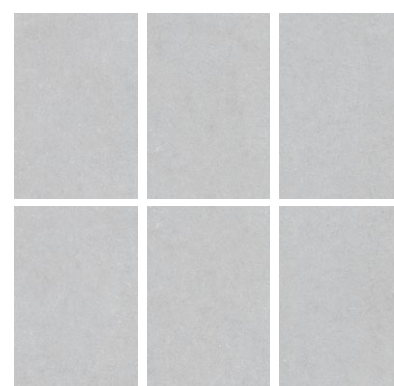
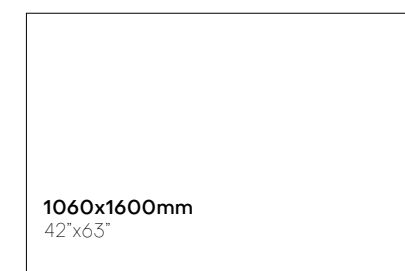
A boundless stone realm, exploring infinite visual possibilities.



Phases:6
Glazed-matt

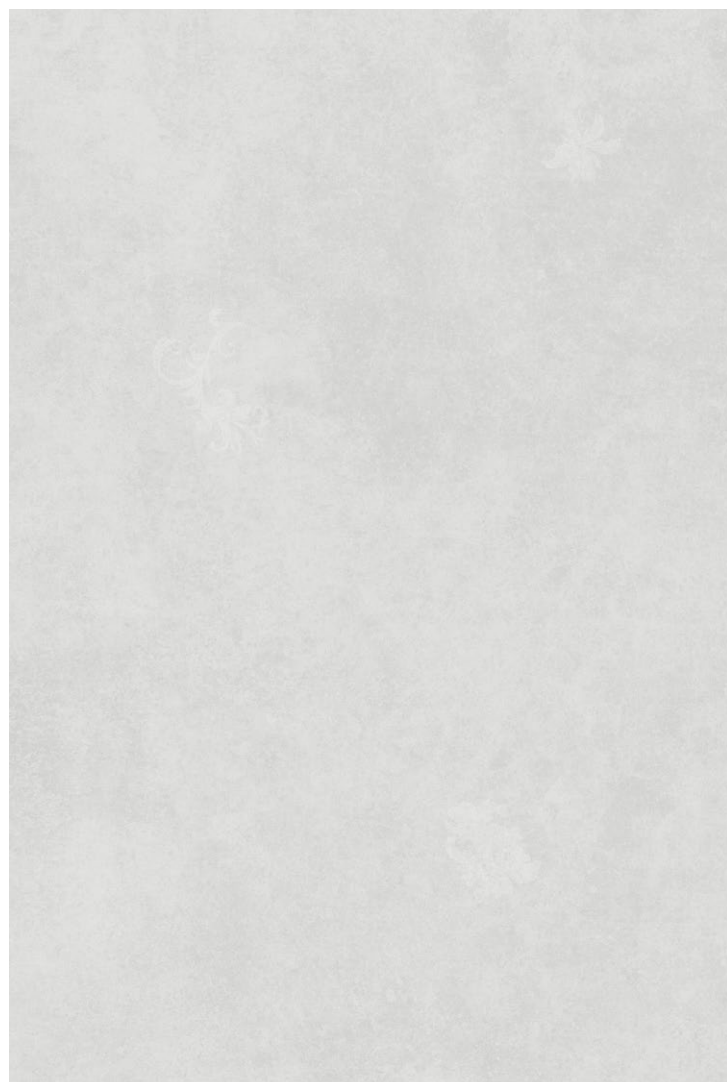
Model Dimensions:
1060x1600mm 42"x63" ± 12mm

Model Number:
106-160FEG10121M



A boundless stone realm, exploring infinite visual possibilities.

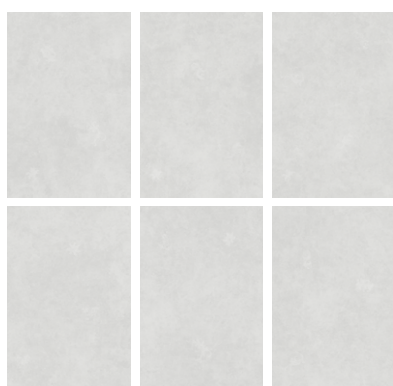
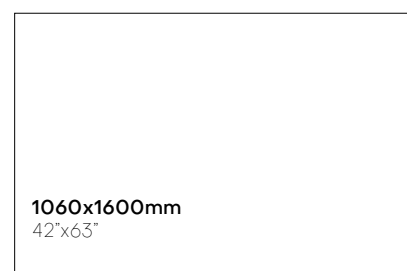
WUJI Stone



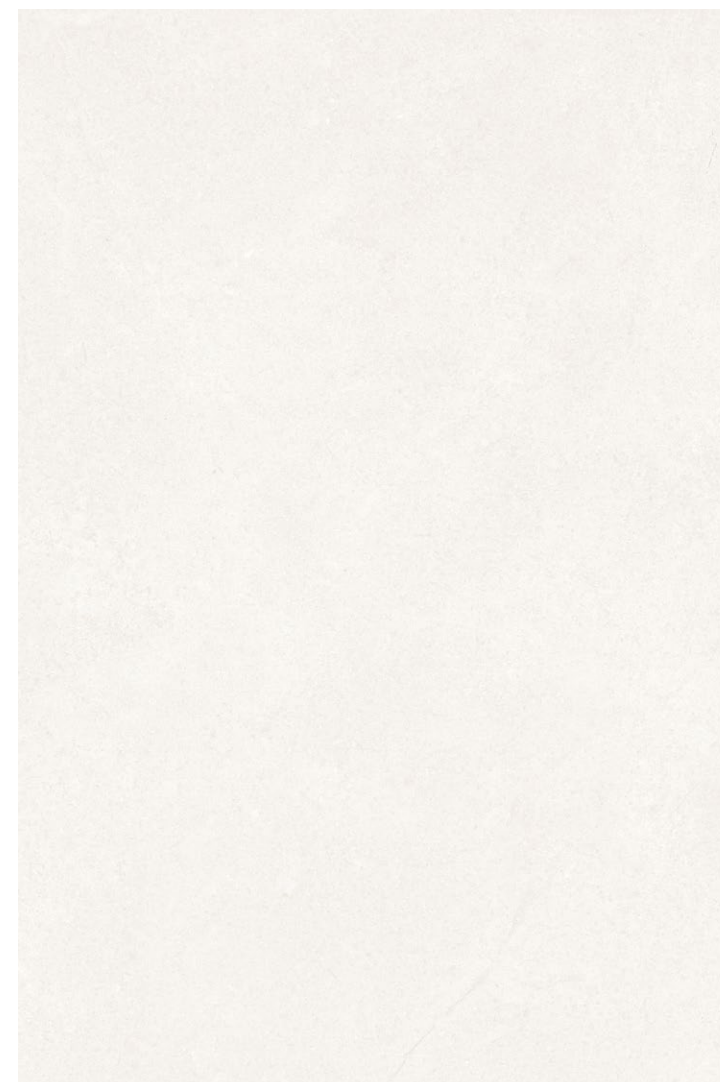
Phases:6
Glazed-matt

Model Dimensions:
1060x1600mm 42"x63" ± 12mm

Model Number:
106-160FEG10205M(5A)



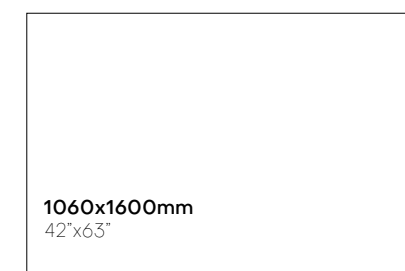
A boundless stone realm, exploring infinite visual possibilities.



Phases:6
Glazed-matt

Model Dimensions:
1060x1600mm 42"x63" ± 12mm

Model Number:
106-160FEG10161M



A boundless stone realm, exploring infinite visual possibilities.

ELEMENTAL TRUTH COLLECTION

The pinnacle of design lies in returning to the truth of materials. Inspired by the philosophy of "unpolished jade and unrefined gold," the Elemental Truth Collection strips away excessive ornamentation. It captures the serenity of cement, the softness of micro-cement, and the weathered textures of time. Through unique dry-grinding and moulding techniques, each tile possesses a skin-like, warm tactility. Designed for souls who appreciate the "beauty of imperfection," it infuses modern spaces with the quiet, powerful, and rustic aesthetics of Wabi-Sabi.



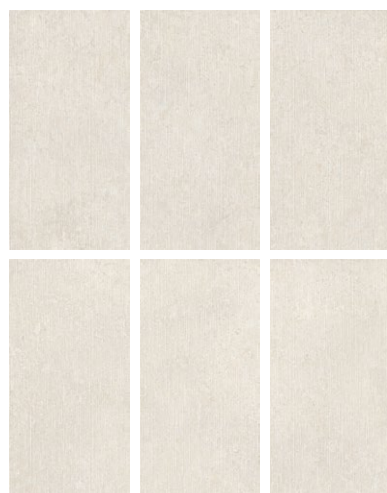
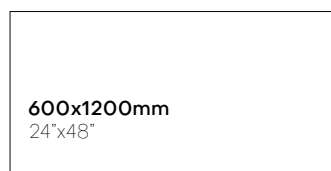
WUJI Stone



Phases:6
Glazed-matt

Model Dimensions:
600x1200mm 24"x48" ± 9mm

Model Number:
60-120FEG10115M



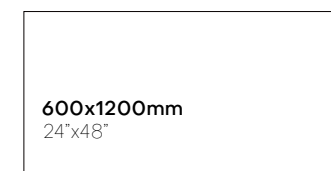
A boundless stone realm, exploring infinite visual possibilities.



Phases:6
Glazed-matt

Model Dimensions:
600x1200mm 24"x48" ± 9mm

Model Number:
60-120FEG10116M



A boundless stone realm, exploring infinite visual possibilities.

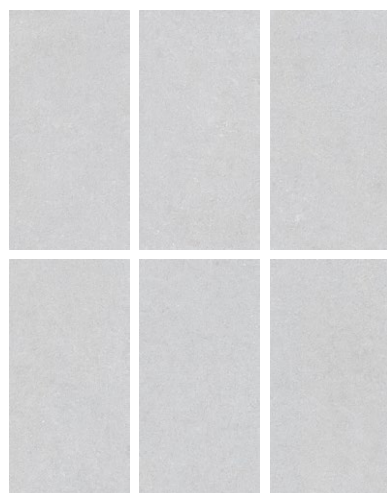
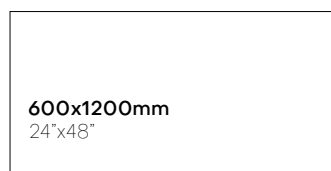
WUJI Stone



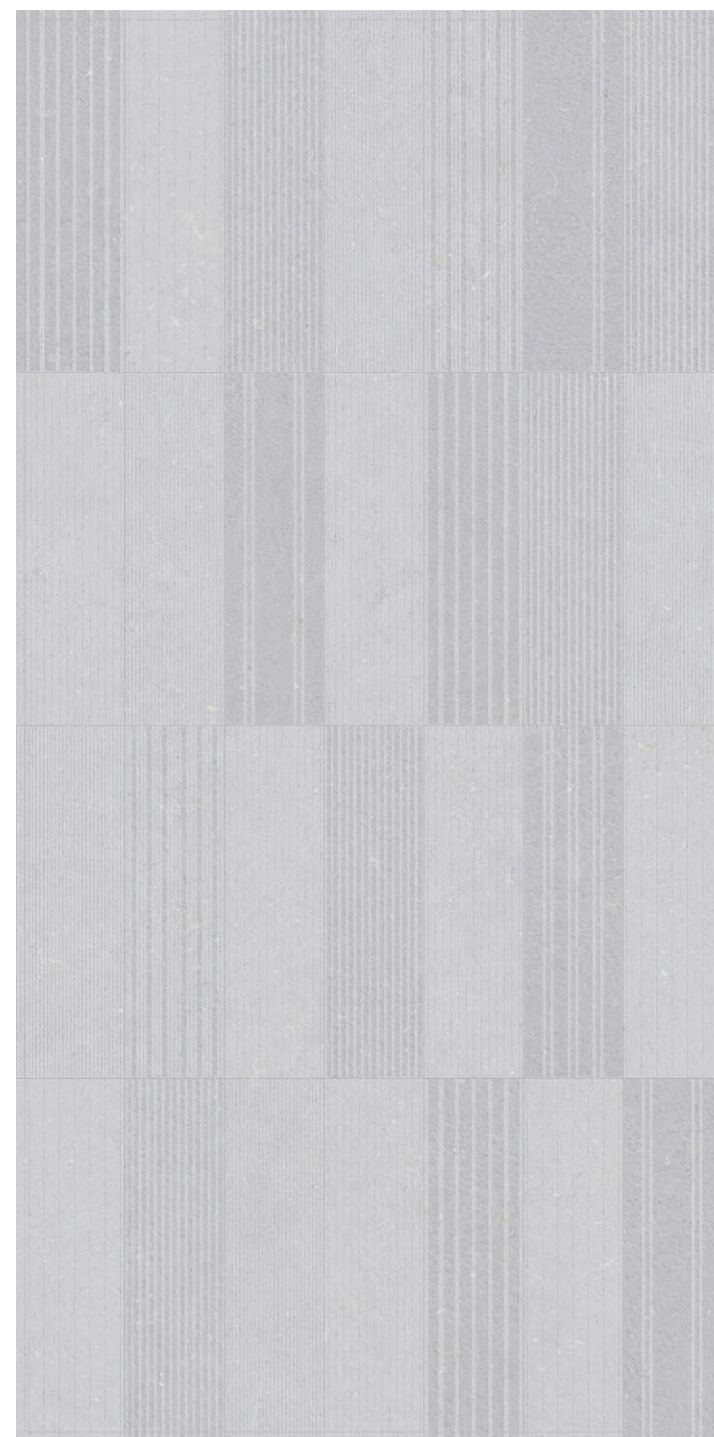
Phases:6
Glazed-matt

Model Dimensions:
600x1200mm 24"x48" ± 9mm

Model Number:
60-120FEG10126M



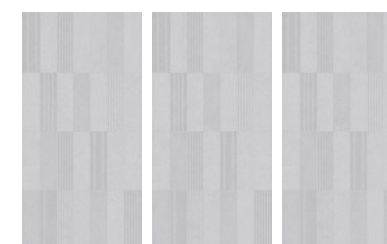
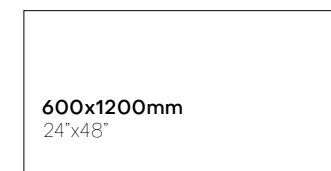
A boundless stone realm, exploring infinite visual possibilities.



Phases:3
Glazed-matt

Model Dimensions:
600x1200mm 24"x48" ± 9mm

Model Number:
60-120FEG10127M



A boundless stone realm, exploring infinite visual possibilities.

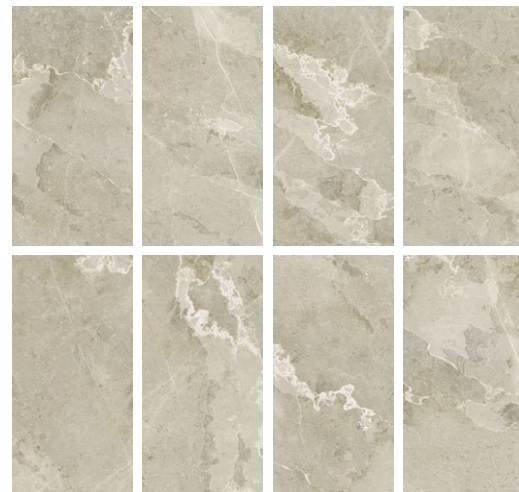
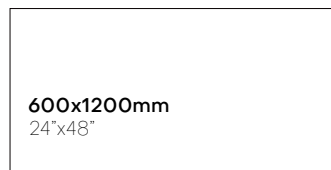
Galaxy Series



Phases:8
Glazed-matt

Model Dimensions:
600x1200mm 24"x48" ± 9mm

Model Number:
60-120FMZ10505M



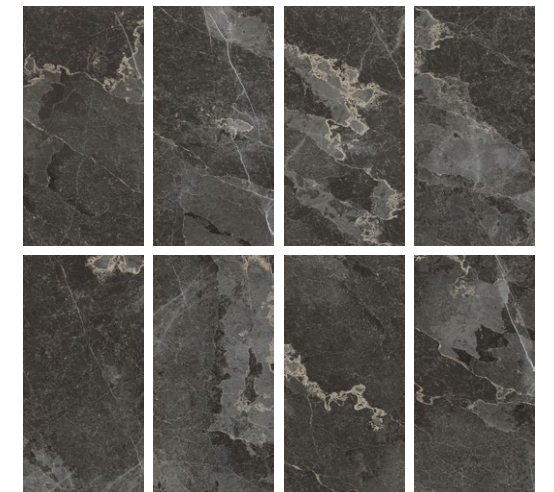
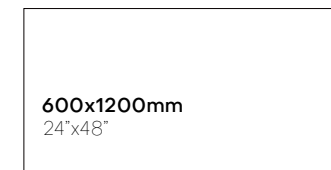
Brilliant like the galaxy stars, illuminating spatial art.



Phases:8
Glazed-matt

Model Dimensions:
600x1200mm 24"x48" ± 9mm

Model Number:
60-120FMZ10507M



Brilliant like the galaxy stars, illuminating spatial art.

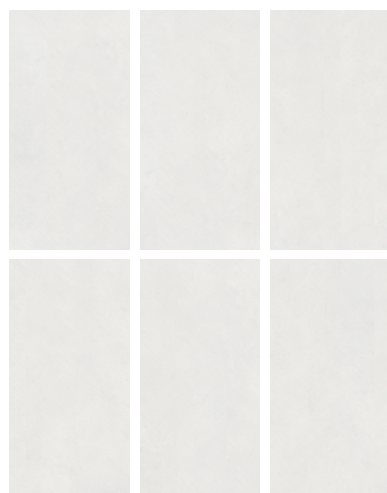
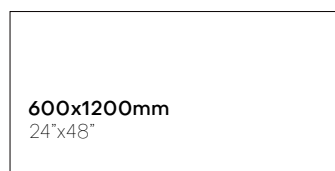
Matter Matte Series



Phases:6
Glazed-matt

Model Dimensions:
600x1200mm 24"x48" ± 9mm

Model Number:
60-120FML10308M(5A)



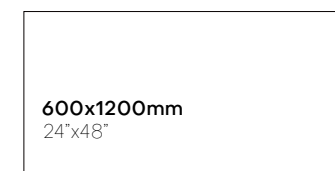
Deep impression of original stone, preserving the pristine beauty of nature.



Phases:6
Glazed-matt

Model Dimensions:
600x1200mm 24"x48" ± 9mm

Model Number:
60-120FML10109M(5A)



Deep impression of original stone, preserving the pristine beauty of nature.

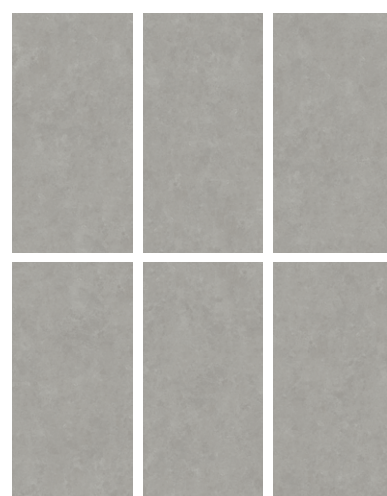
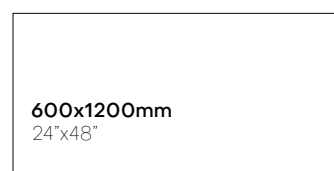
Matter Matte Series



Phases:6
Glazed-matt

Model Dimensions:
600x1200mm 24"x48" ± 9mm

Model Number:
60-120FML10110M(5A)



Deep impression of original stone, preserving the pristine beauty of nature.

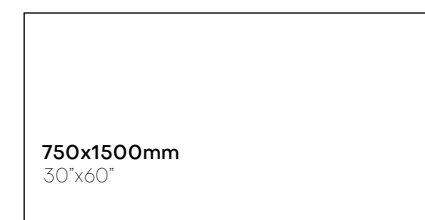
Legacy Jade Series



Phases:6
Glazed-matt

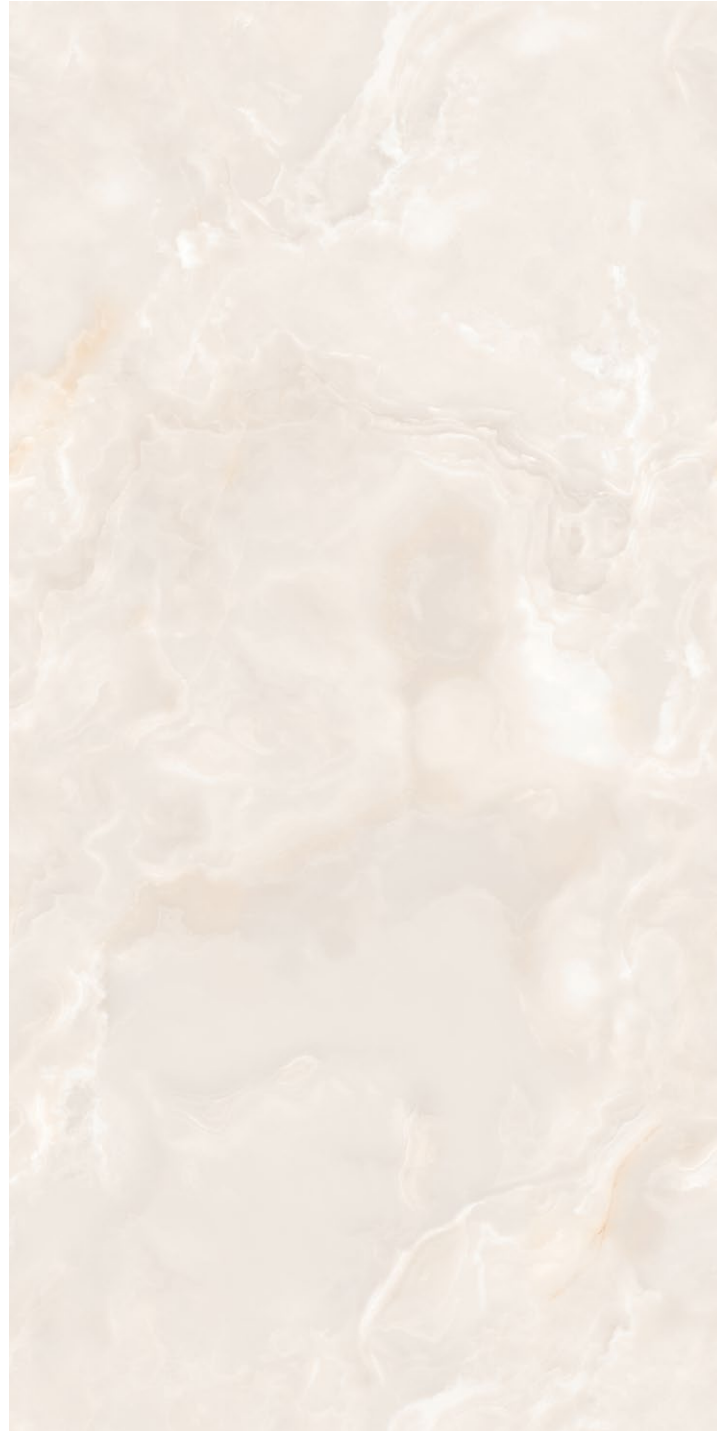
Model Dimensions:
750x1500mm 30"x60" ± 9mm

Model Number:
75-150FME10011M(5A)



Deep impression of original stone, preserving the pristine beauty of nature.

Legacy Jade Series



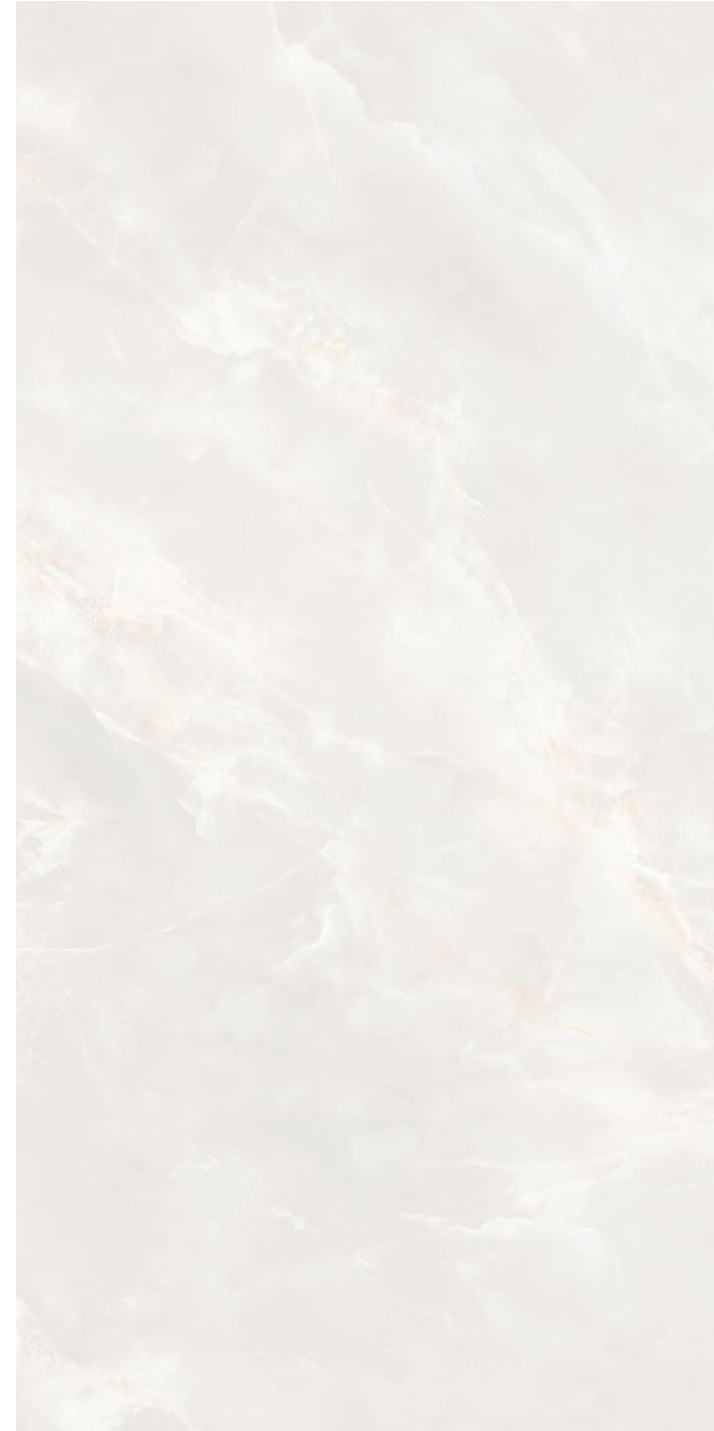
Phases:6
Glazed polished

Model Dimensions:
750x1500mm 30"x60" ± 10mm

Model Number:
75-150FME10016LPM(5A)



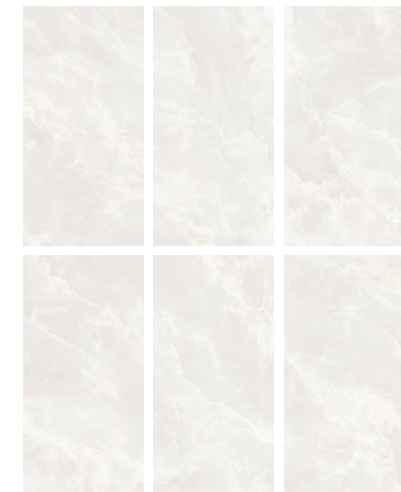
Deep impression of original stone, preserving the pristine beauty of nature.



Phases:6
Glazed polished

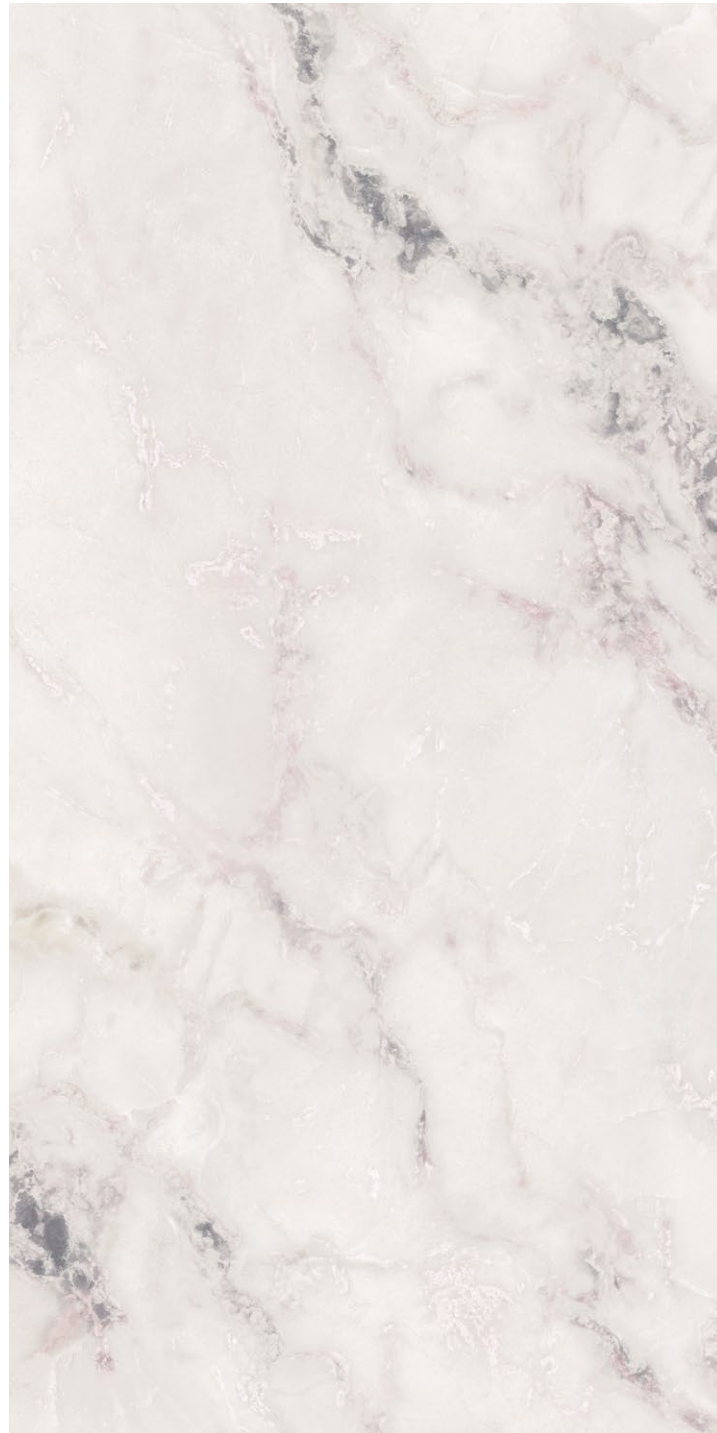
Model Dimensions:
750x1500mm 30"x60" ± 10mm

Model Number:
75-150FME10015LPM(5A)



Deep impression of original stone, preserving the pristine beauty of nature.

Legacy Jade Series



Phases:6
Glazed polished

Model Dimensions:
750x1500mm 30"x60" ± 10mm

Model Number:
75-150FME10019LPM(5A)



Deep impression of original stone, preserving the pristine beauty of nature.



MODERN ERA

"Modern Era" signifies both the flourishing present and the golden moments of life. This collection is born from a deep insight into contemporary mainstream home aesthetics. It presents internationally popular colours, textures, and sizes in a highly inclusive manner. Whether it's the grey tones of modern minimalism or the warm hues of understated luxury, Modern Era seamlessly integrates into the ideal homes of countless families. It is a gift for those who love life—unassuming, yet undeniably premium; accessible, yet rich in texture.



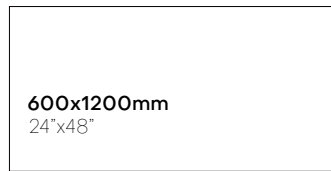
Rustic Stone Series



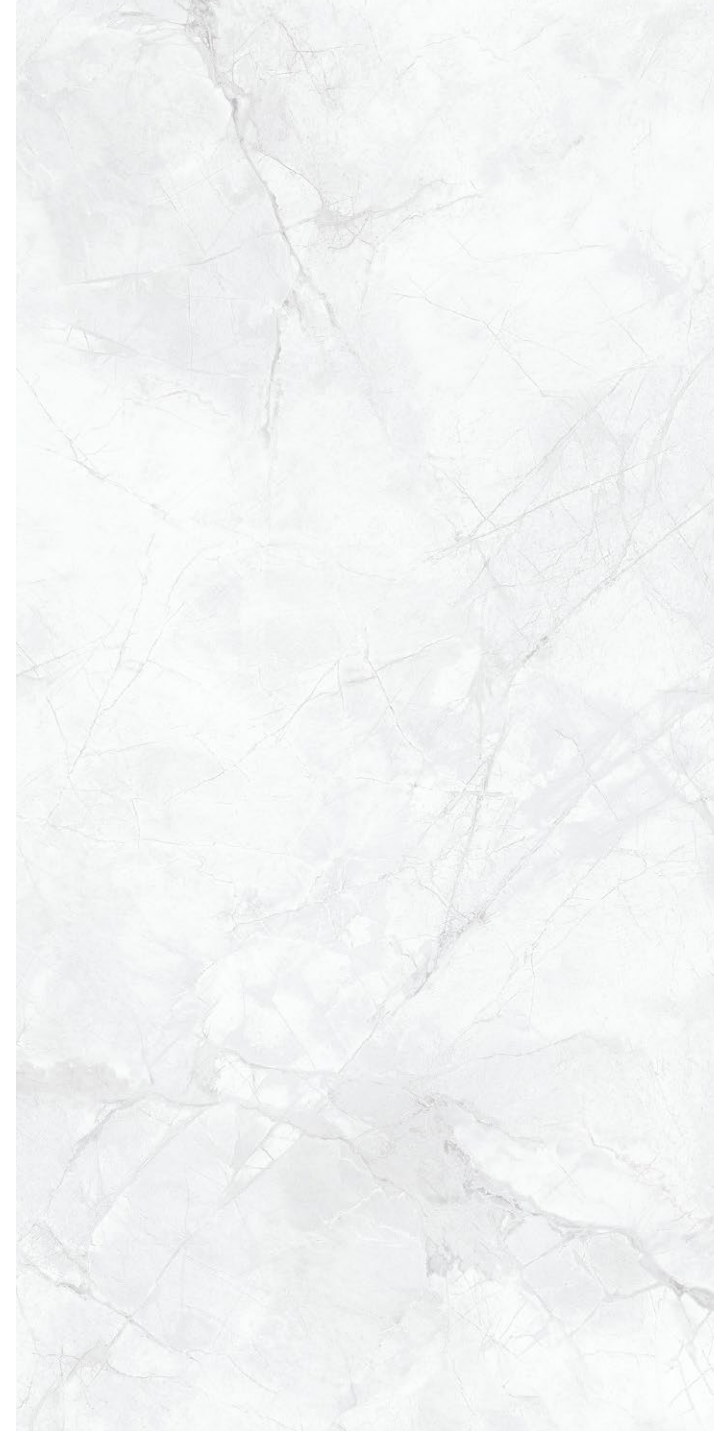
Phases:8
Glazed-matt

Model Dimensions:
600x1200mm 24"x48" \pm 9mm

Model Number:
60-120FMC10801M



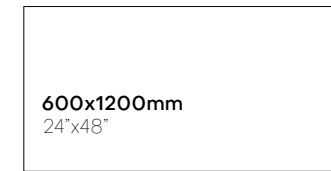
The elegance carved by time, endowing spaces with enduring charm.



Phases:8
Glazed-matt

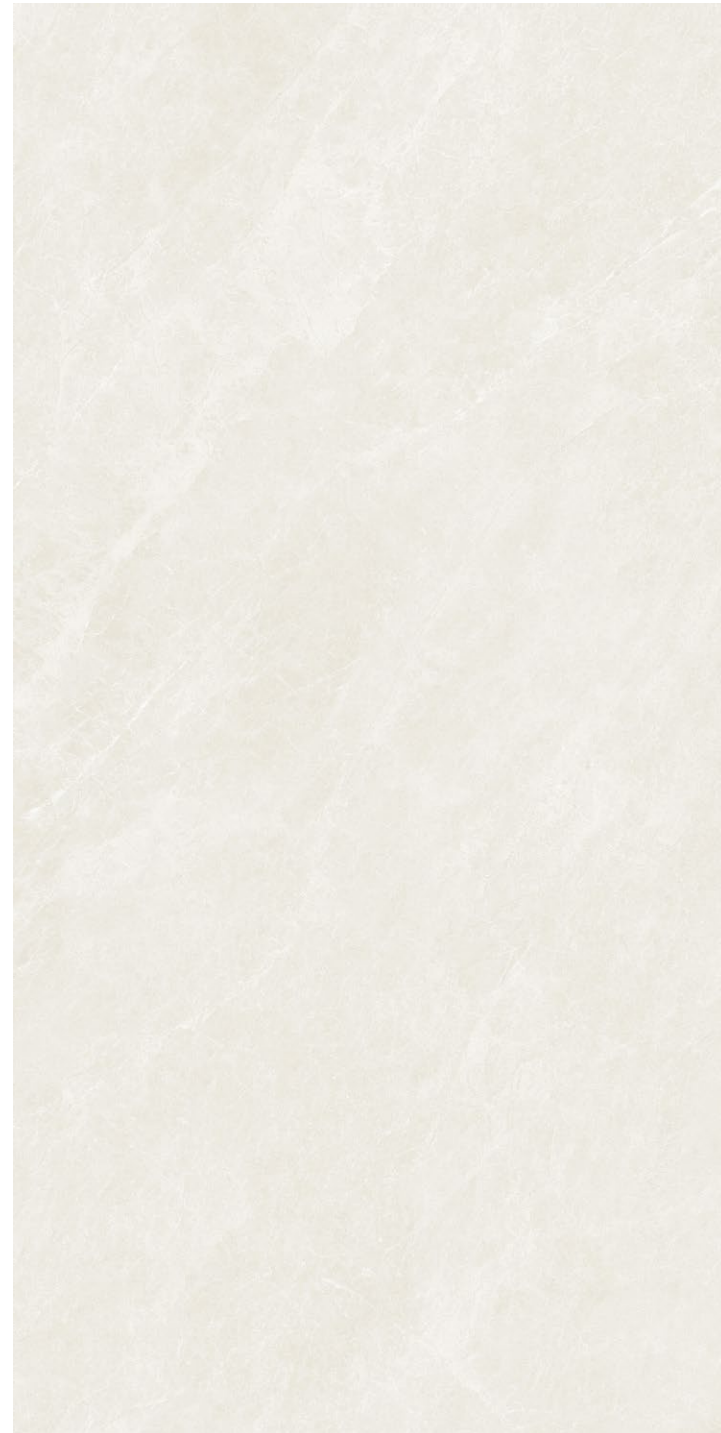
Model Dimensions:
600x1200mm 24"x48" \pm 9mm

Model Number:
60-120FMC10802M



The elegance carved by time, endowing spaces with enduring charm.

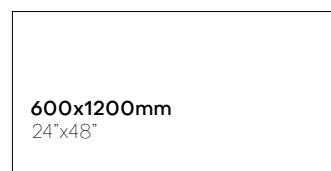
Rustic Stone Series



Phases:6
Glazed-matt

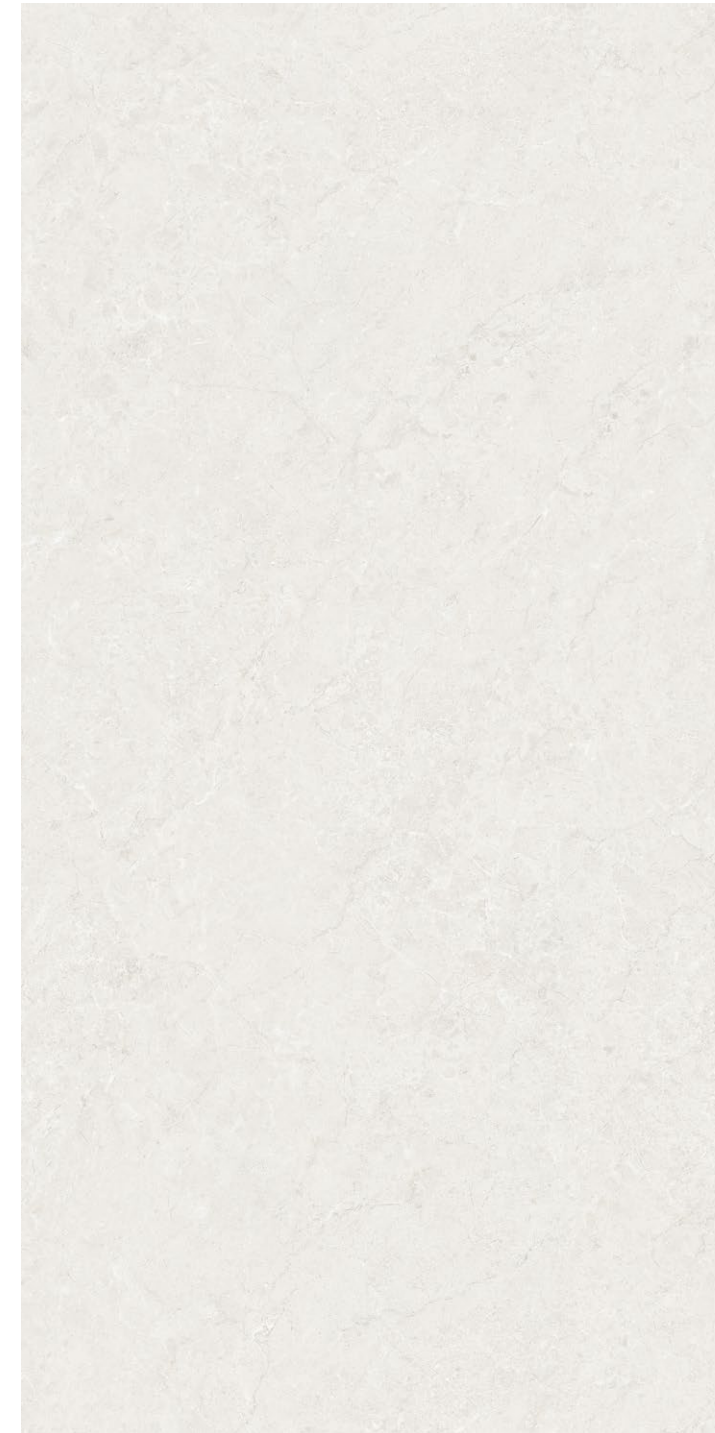
Model Dimensions:
600x1200mm 24"x48" ± 9mm

Model Number:
60-120FMC10803M



The elegance carved by time, endowing spaces with enduring charm.

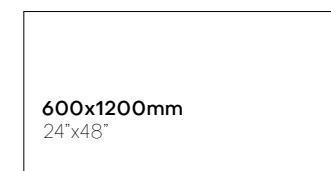
Matter Matte Series



Phases:6
Glazed polished

Model Dimensions:
600x1200mm 24"x48" ± 9mm

Model Number:
60-120FKB10720PM



Bright glaze, like mirror and diamond, interpreting dazzling luxury in spaces.

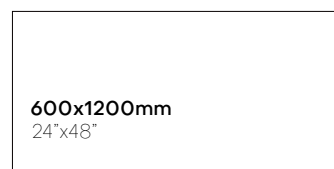
Matter Matte Series



Phases:3
Glazed polished

Model Dimensions:
600x1200mm 24"x48" ± 9mm

Model Number:
60-120FKB106540PM



Bright glaze, like mirror and diamond, interpreting dazzling luxury in spaces.

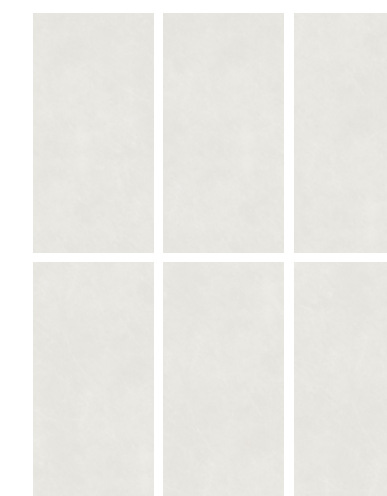
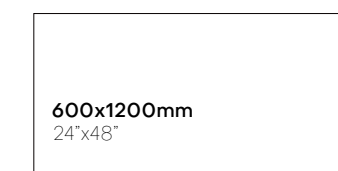
Glazed Antique Series



Phases:6
Glazed-matt

Model Dimensions:
600x1200mm 24"x48" ± 9mm

Model Number:
60-120FKB104540M



Plain Vituosha, retaining the original impression of nature.



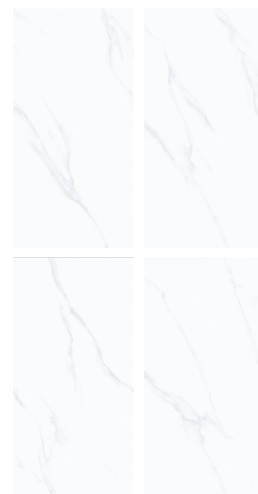
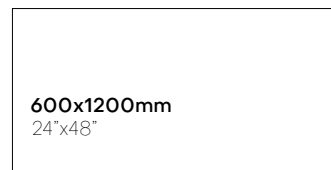
Glazed Antique Series



Phases:4
Glazed polished

Model Dimensions:
600x1200mm 24"x48" ± 9mm

Model Number:
60-120FKB10055PM



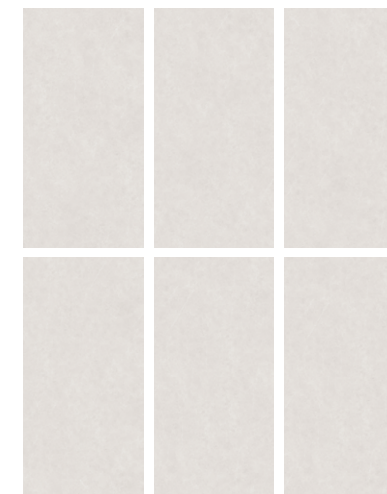
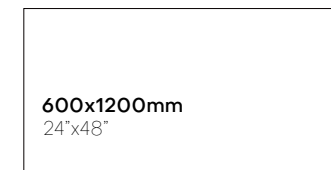
Bright glaze, like mirror and diamond, interpreting dazzling luxury in spaces.



Phases:6
Glazed polished

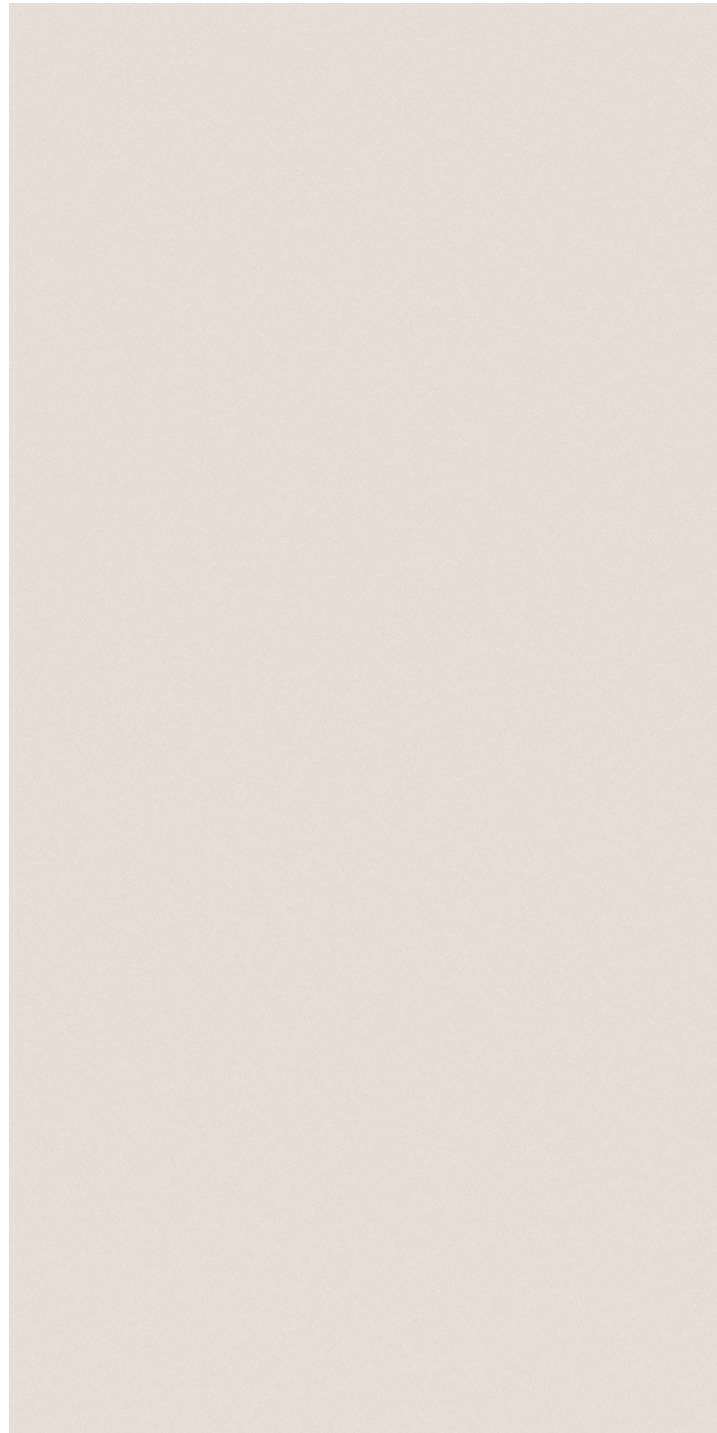
Model Dimensions:
600x1200mm 24"x48" ± 9mm

Model Number:
60-120FKB10703PM



Bright glaze, like mirror and diamond, interpreting dazzling luxury in spaces.

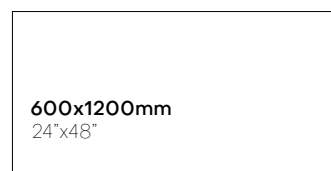
Vituosha Series



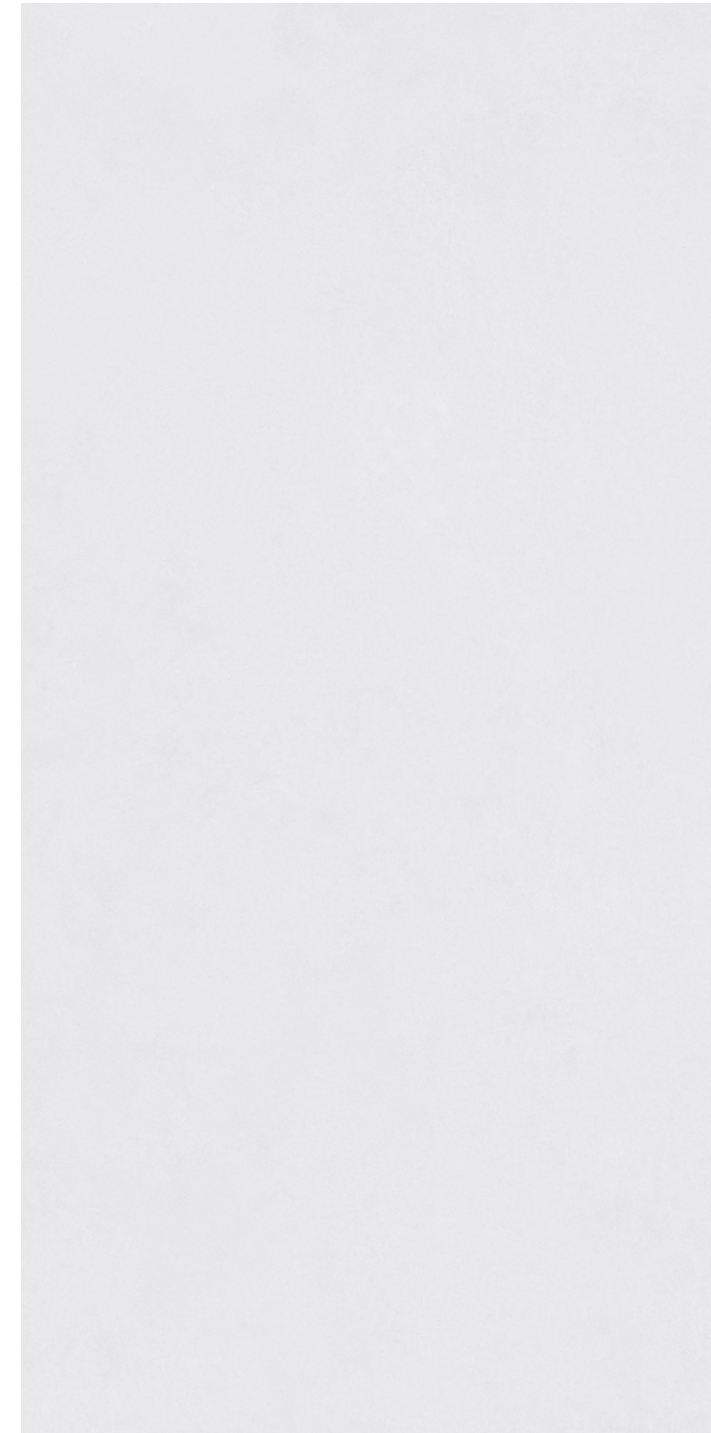
Phases:1
Glazed-matt

Model Dimensions:
600x1200mm 24"x48" ± 9mm

Model Number:
60-120FI10295M



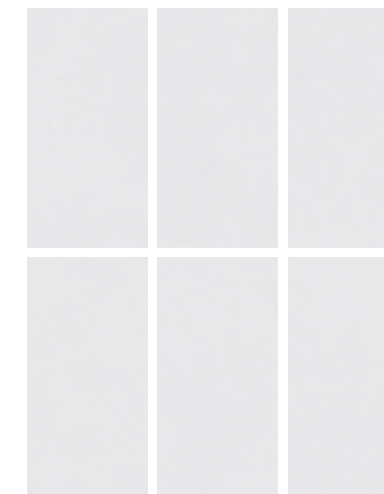
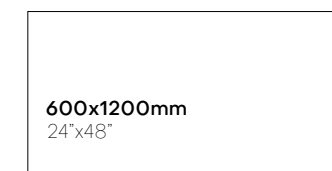
Plain Vituosha, retaining the original impression of nature.



Phases:6
Glazed-matt

Model Dimensions:
600x1200mm 24"x48" ± 9mm

Model Number:
60-120FI10502M



Plain Vituosha, retaining the original impression of nature.

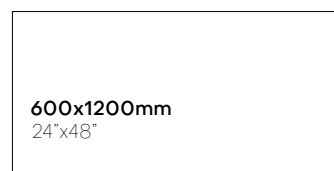
Classic Stone Era



Phases:1
Glazed-matt

Model Dimensions:
600x1200mm 24"x48" ± 9mm

Model Number:
60-120FMB108255M



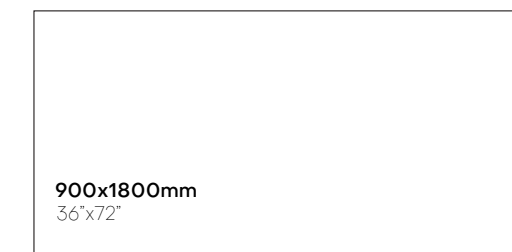
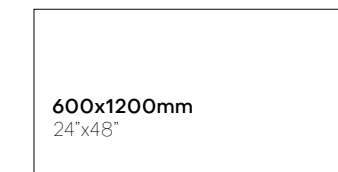
Classic everlasting, new stone era, reshaping the classic beauty of space.



Phases:6
Glazed polished

Model Dimensions:
600x1200mm 24"x48" ± 10mm
900x1800mm 36"x72" ± 9mm

Model Number:
60-120FMB10738LPM
90-180FMB10738LPM



Classic everlasting, new stone era, reshaping the classic beauty of space.

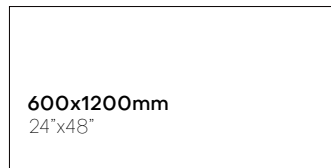
Classic Stone Era



Phases:6
Glazed polished

Model Dimensions:
600x1200mm 24"x48" ± 9mm

Model Number:
60-120FMB10735LPM



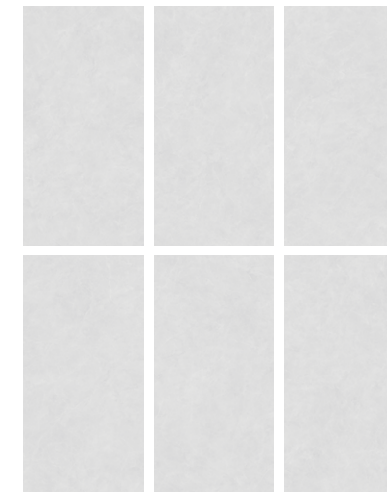
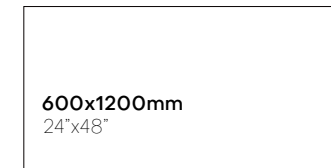
Classic everlasting, new stone era, reshaping the classic beauty of space.



Phases:6
Glazed polished

Model Dimensions:
600x1200mm 24"x48" ± 9mm

Model Number:
60-120FMB10686PM



Classic everlasting, new stone era, reshaping the classic beauty of space.

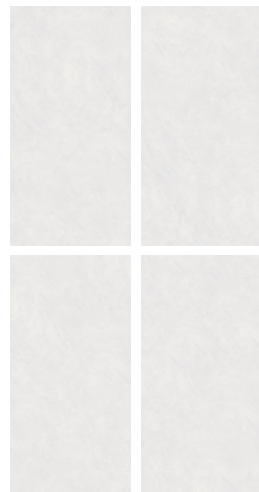
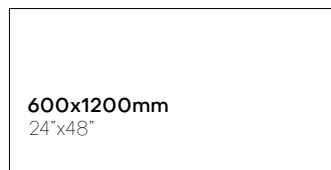
Classic Stone Era



Phases:4
Glazed-matt

Model Dimensions:
600x1200mm 24"x48" \pm 9mm

Model Number:
60-120FMB108636PM



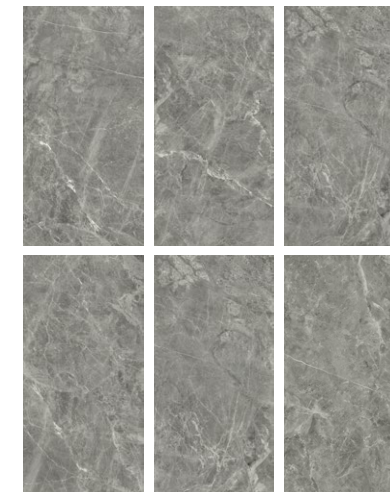
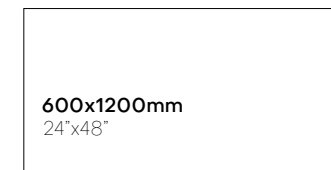
Classic everlasting, new stone era, reshaping the classic beauty of space.



Phases:6
Glazed-matt

Model Dimensions:
600x1200mm 24"x48" \pm 9mm

Model Number:
60-120FMB0026PM



Classic everlasting, new stone era, reshaping the classic beauty of space.

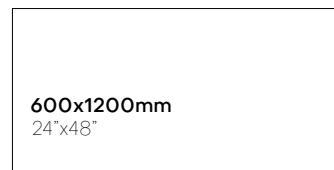
Classic Stone Era



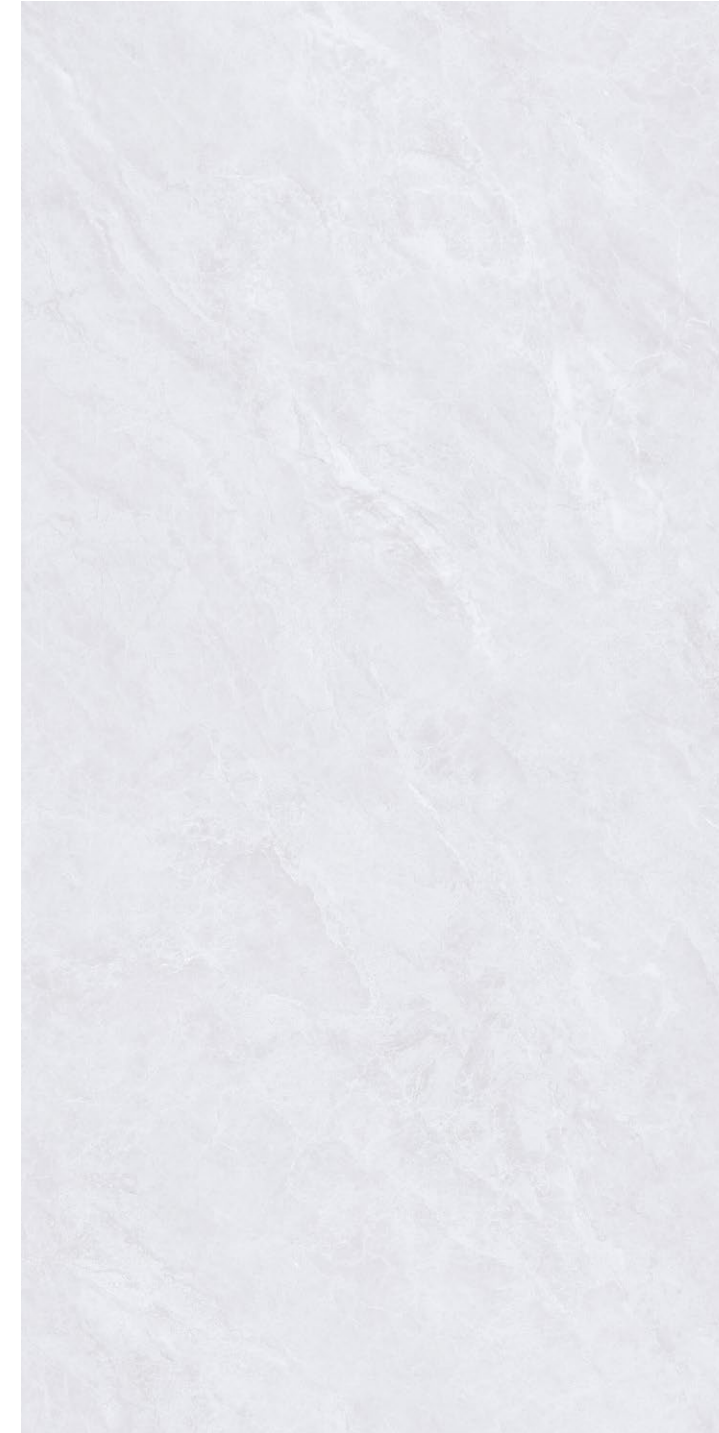
Phases:6
Glazed polished

Model Dimensions:
600x1200mm 24"x48" ± 9mm

Model Number:
60-120FMB0502PM



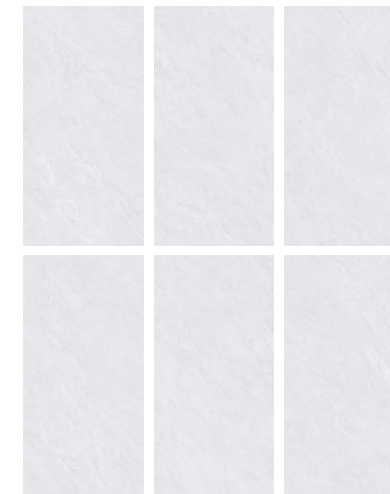
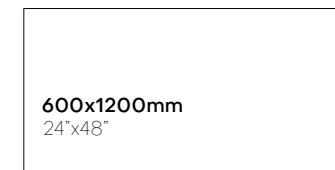
Classic everlasting, new stone era, reshaping the classic beauty of space.



Phases:6
Glazed polished

Model Dimensions:
600x1200mm 24"x48" ± 9mm

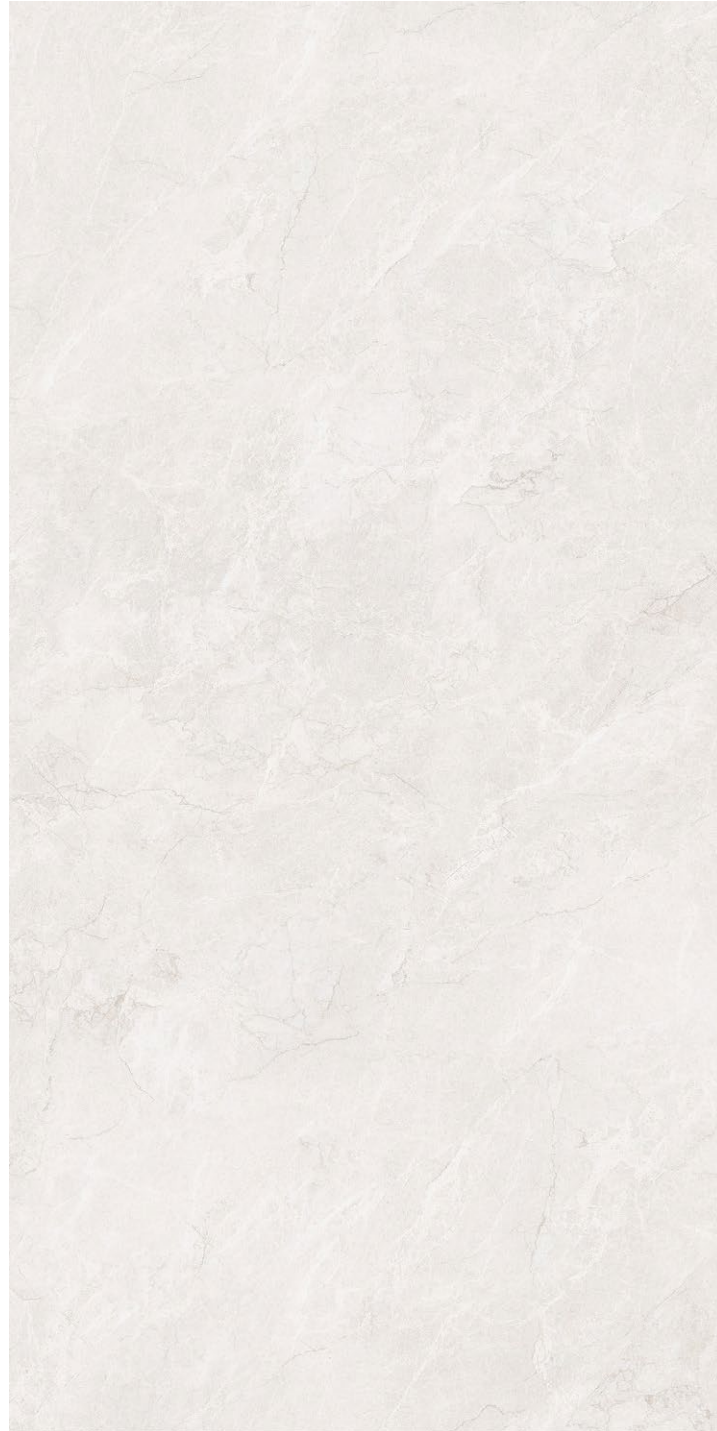
Model Number:
60-120FMBT10700PM



Classic everlasting, new stone era, reshaping the classic beauty of space.



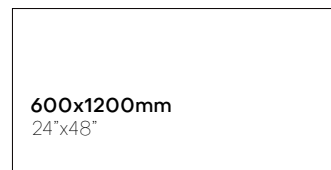
Classic Stone Era



Phases:6
Glazed polished

Model Dimensions:
600x1200mm 24"x48" ± 9mm

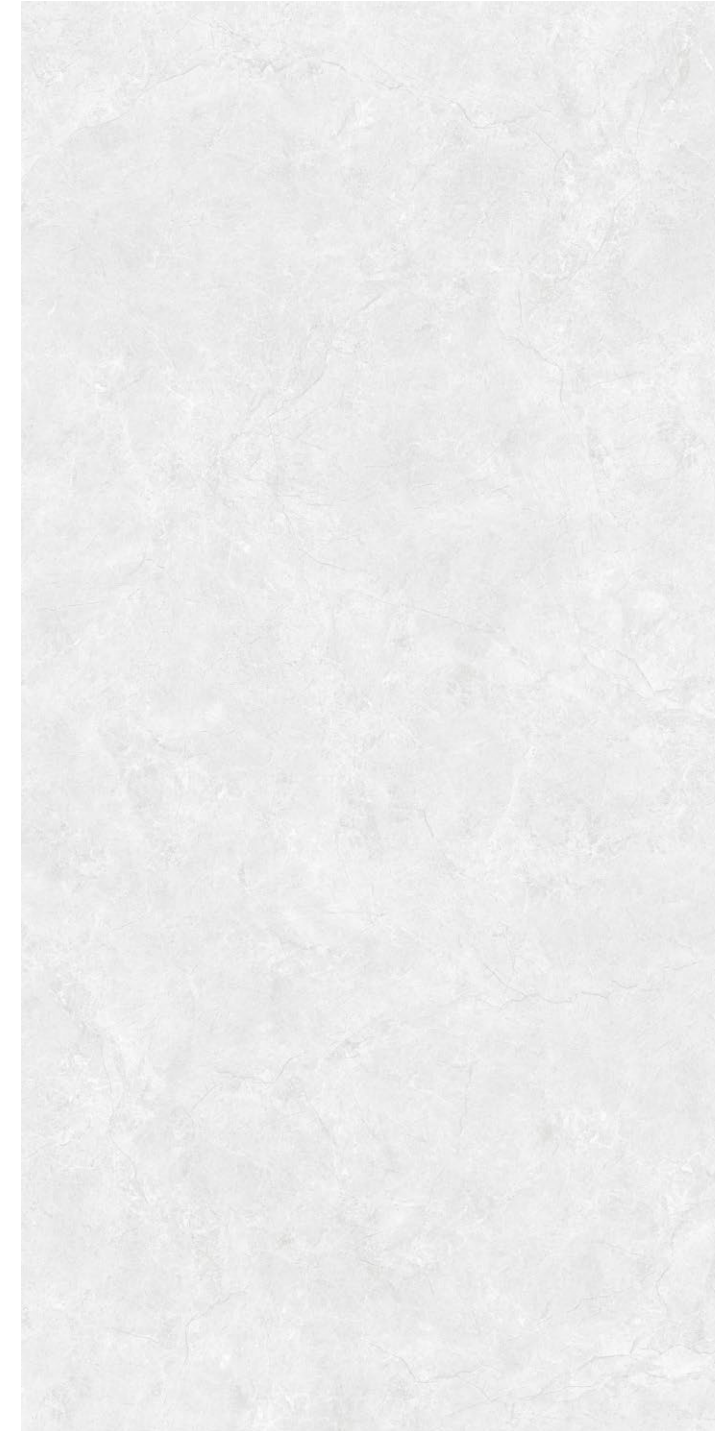
Model Number:
60-120FMBT10698PM



600x1200mm
24"x48"



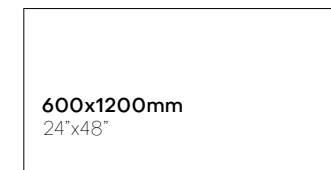
Classic everlasting, new stone era, reshaping the classic beauty of space.



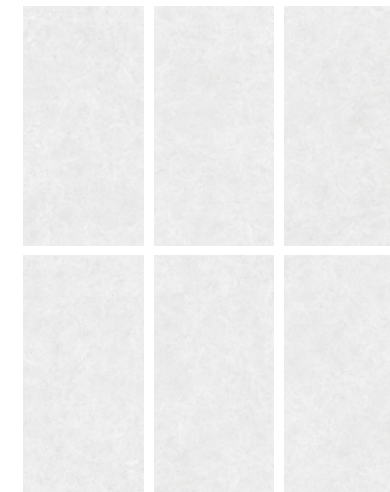
Phases:6
Glazed polished

Model Dimensions:
600x1200mm 24"x48" ± 9mm

Model Number:
60-120FMBT10695PM



600x1200mm
24"x48"



Classic everlasting, new stone era, reshaping the classic beauty of space.



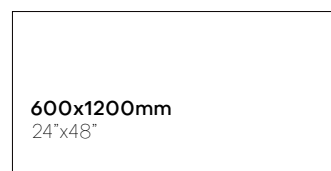
Classic Stone Era



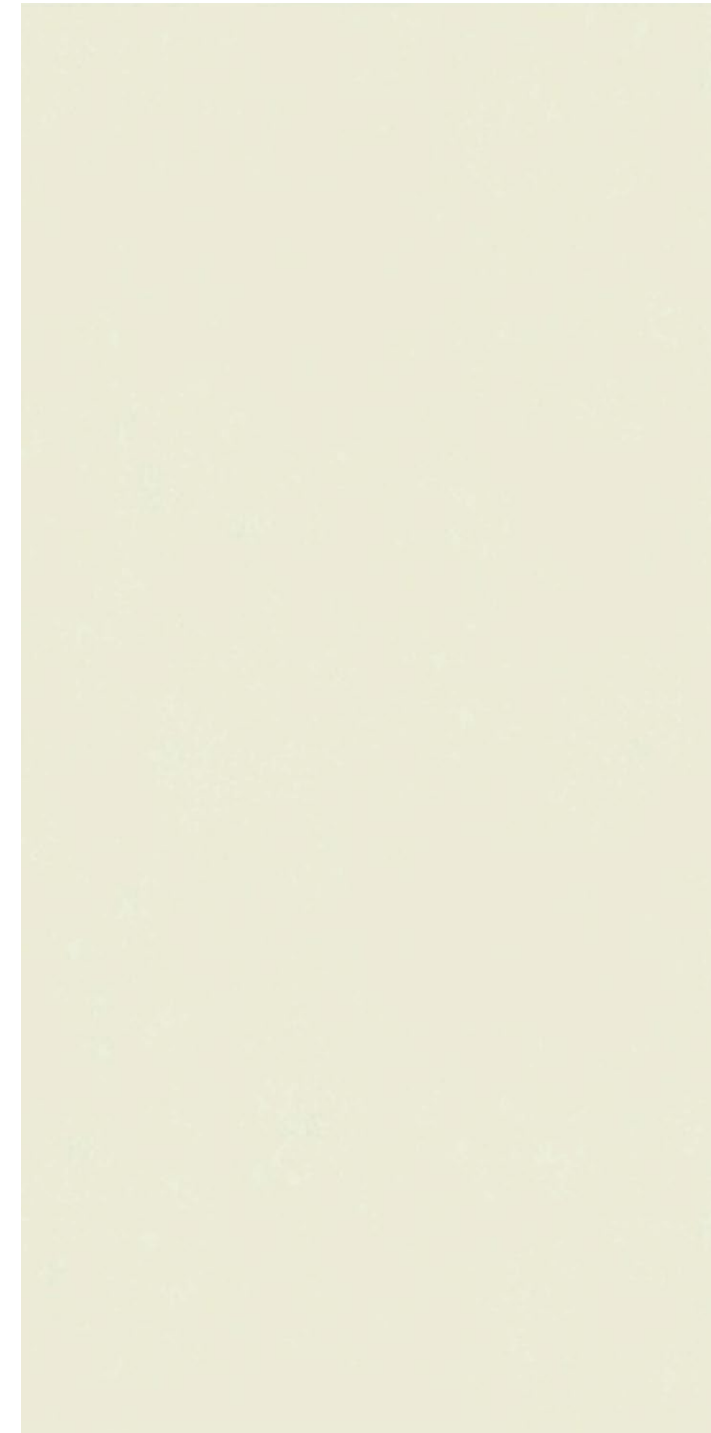
Phases:6
Glazed polished

Model Dimensions:
600x1200mm 24"x48" ± 9mm

Model Number:
60-120FMB0503PM



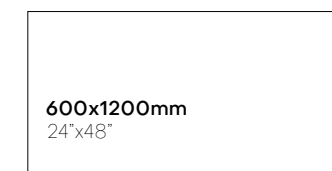
Classic everlasting, new stone era, reshaping the classic beauty of space.



Phases:1
Glazed-matt

Model Dimensions:
600x1200mm 24"x48" ± 9mm

Model Number:
60-120FMBT108377M



Classic everlasting, new stone era, reshaping the classic beauty of space.



FORGE EDGE

A fine blade is forged through years of grinding. The Forge Edge Collection embodies our core technical strength and stringent quality control standards. In the face of fierce competition, we respond with a sharp "edge": higher abrasion resistance, lower water absorption, and superior pattern precision. It is the optimal solution for the age of rational consumption, speaking through verified data and proving itself with uncompromising quality. With Forge Edge, we offer not just excellent tiles, but a peace of mind that transcends price.

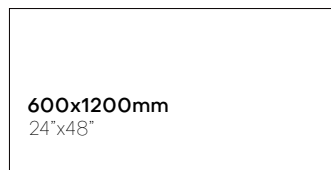


Paris Impression

Phases:6
Glazed-matt

Model Dimensions:
600x1200mm 24"x48" \pm 6mm

Model Number:
60-120FVB10307M



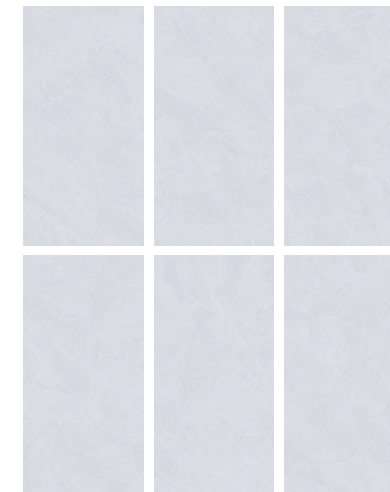
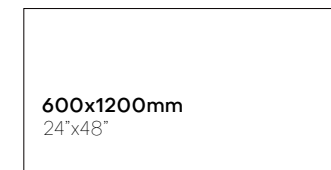
The romantic impression of Paris, integrating into artistic spatial living./

Antique Tile

Phases:6
Glazed-matt

Model Dimensions:
600x1200mm 24"x48" \pm 6mm

Model Number:
60-120FKN09561M



Retro charm with traces of time, embodying historical beauty in spaces.

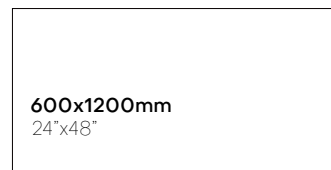
Antique Tile



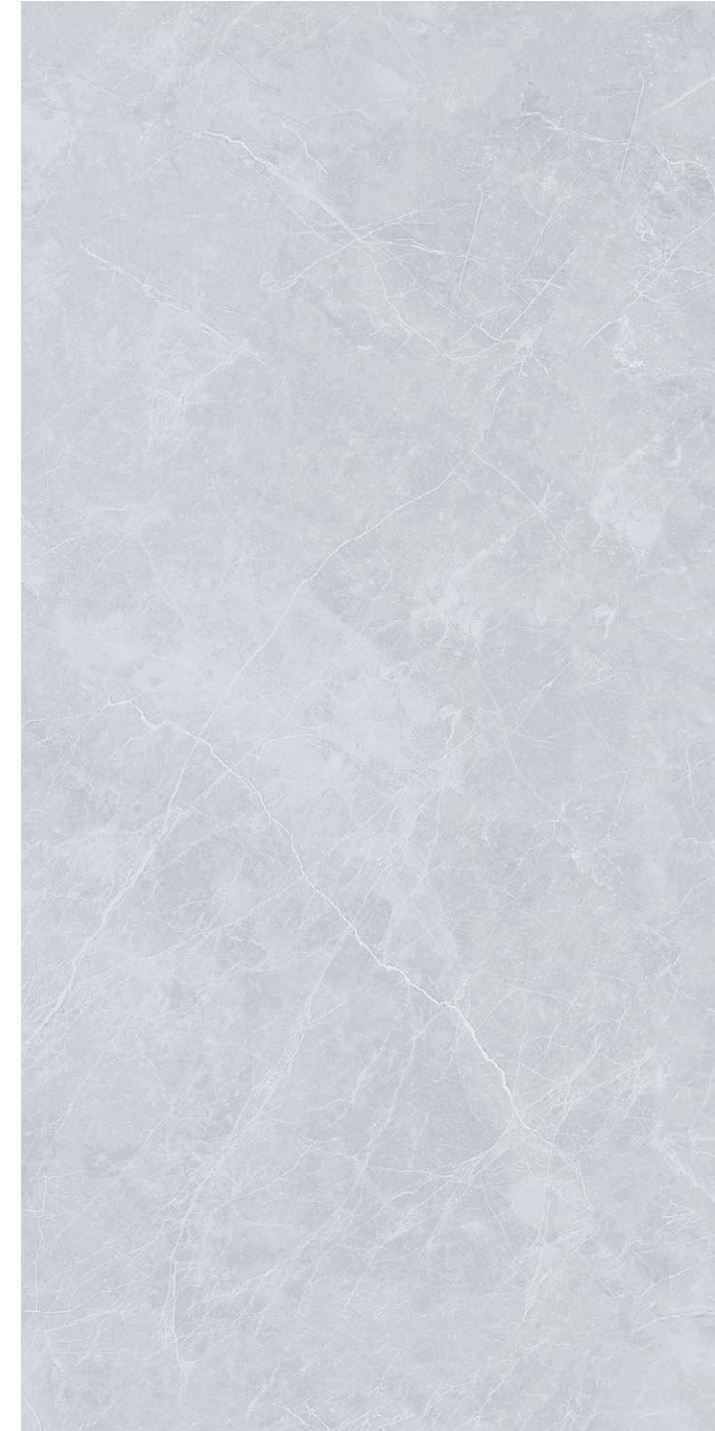
Phases:8
Glazed-matt

Model Dimensions:
600x1200mm 24"x48" \pm 6mm

Model Number:
60-120FKN09562M



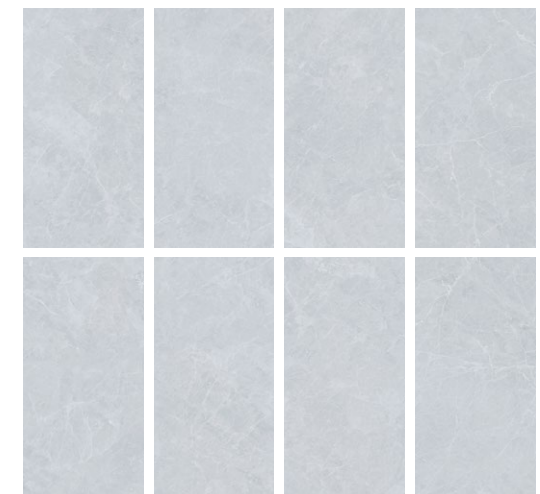
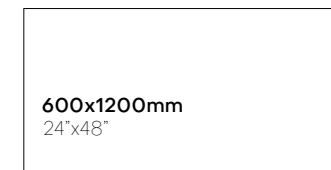
Retro charm with traces of time, embodying historical beauty in spaces.



Phases:8
Glazed-matt

Model Dimensions:
600x1200mm 24"x48" \pm 6mm

Model Number:
60-120FKN09564M



Retro charm with traces of time, embodying historical beauty in spaces.

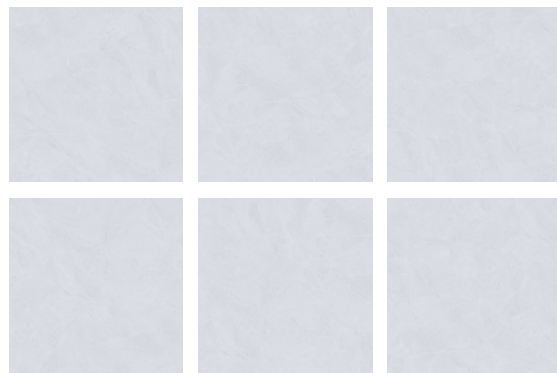
Antique Tile



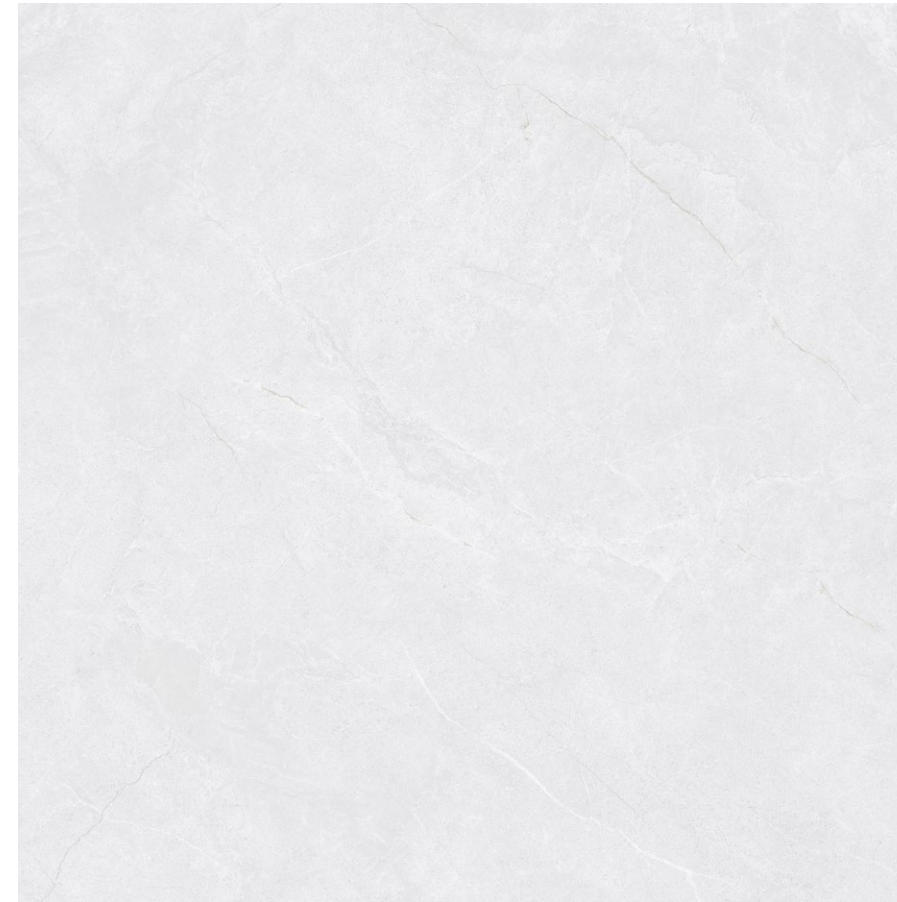
Phases:6
Glazed-matt

Model Dimensions:
600x600mm 24"x24" ± 9mm

Model Number:
6FKNO9561M



Retro charm with traces of time, embodying historical beauty in spaces.



Phases:5
Glazed-matt

Model Dimensions:
600x600mm 24"x24" ± 9mm

Model Number:
6FKNO9562M



Retro charm with traces of time, embodying historical beauty in spaces.

Antique Tile



Phases:6
Glazed-matt

Model Dimensions:
600x600mm 24"x24" ± 9mm

Model Number:
6FKN09564M



Retro charm with traces of time, embodying historical beauty in spaces.

ENDURING FOUNDATION

"Enduring Foundation" means "building the future with lasting commitment." This collection is tailor-made for large-scale projects and commercial spaces. Grounded in the logic of architecture itself, it prioritizes physical performance and colour stability, ensuring high uniformity and harmony in bulk applications. From the lobbies of luxury hotels to the public areas of urban complexes, Enduring Foundation silently supports every grand vision with dependable quality. It is the cornerstone of architecture, and more importantly, the cornerstone of trust.



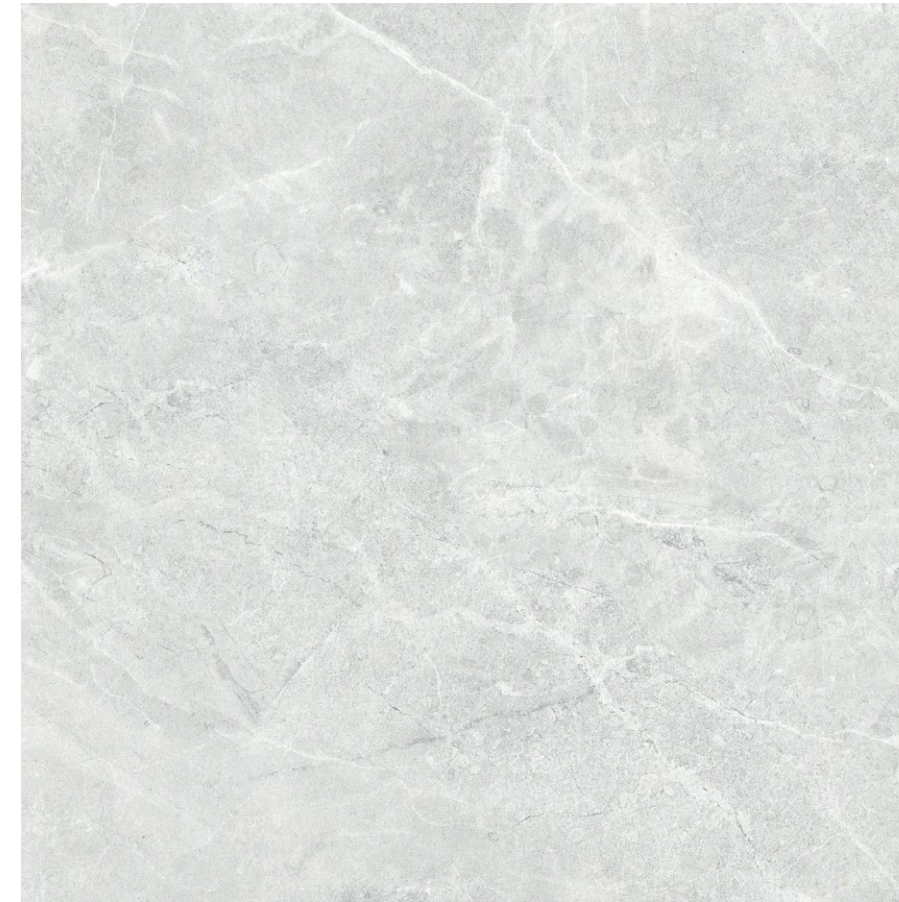
Matt Tile



Phases:10
Glazed-matt

Model Dimensions:
300x300mm 12"x12" ± 8.7mm

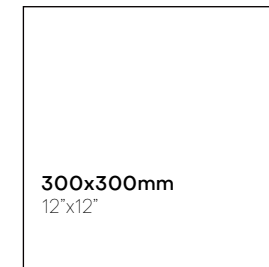
Model Number:
4F406M



Phases:3
Glazed-matt

Model Dimensions:
300x300mm 12"x12" ± 8.7mm

Model Number:
3F08529M



Elegant Matt finish, soft and comfortable, creating a warm spatial atmosphere.



Elegant Matt finish, soft and comfortable, creating a warm spatial atmosphere.

Matt Tile



Phases:8
Glazed-matt

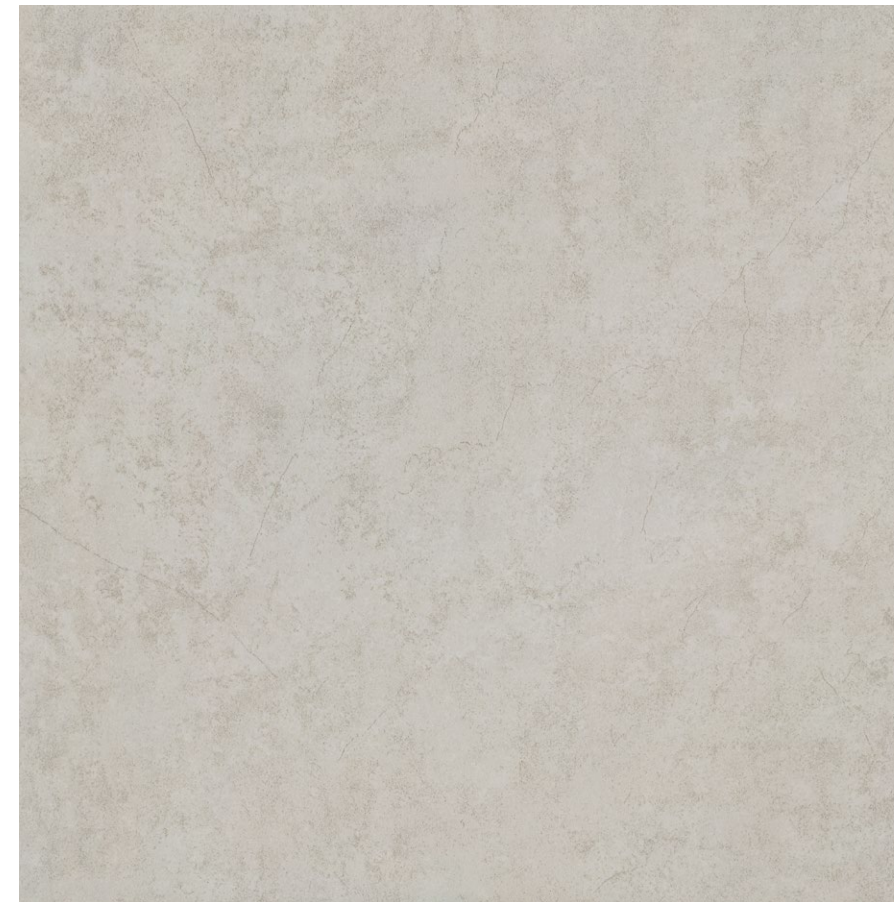
Model Dimensions:
400x400mm 16"x16" ± 8.7mm

Model Number:
4F406M



Elegant Matt finish, soft and comfortable, creating a warm spatial atmosphere.

Milan Stone Elegance



Phases:4
Glazed-matt

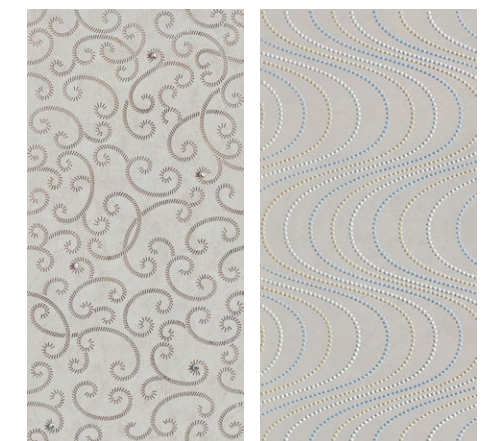
Model Dimensions:
600x600mm 24"x24" ± 9mm

Model Number:
6FE2032M

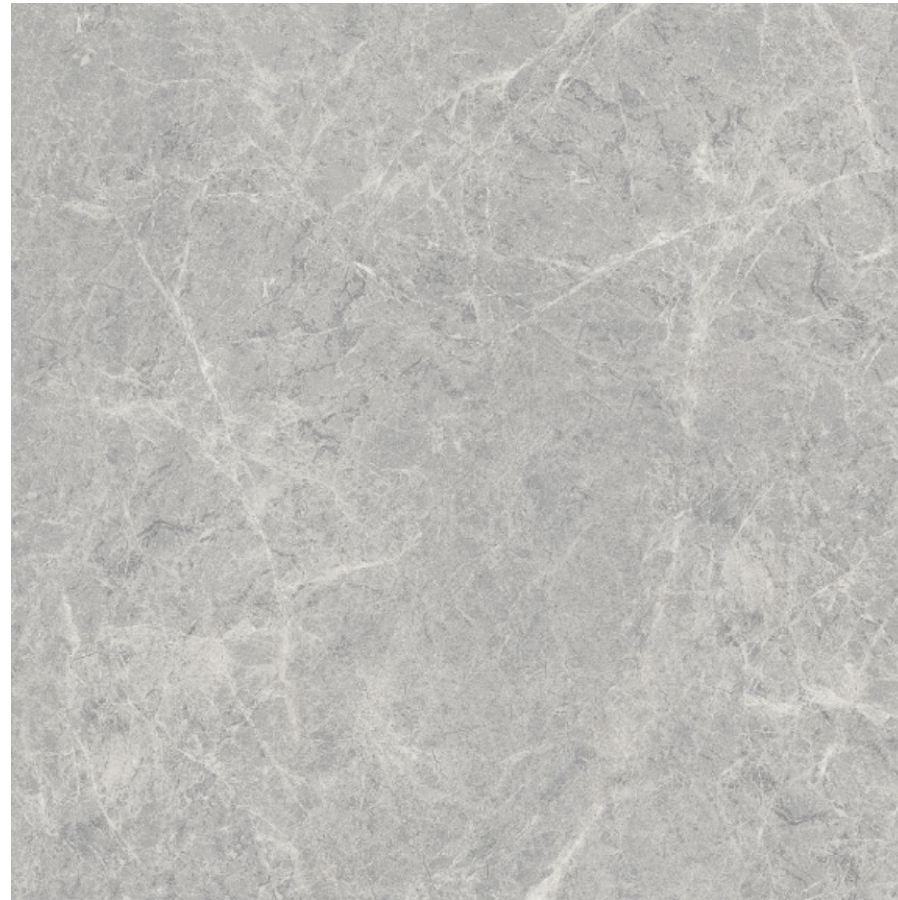


As exquisite as Milan fashion, as timeless as natural stone.

Accessories



Classic Stone Era



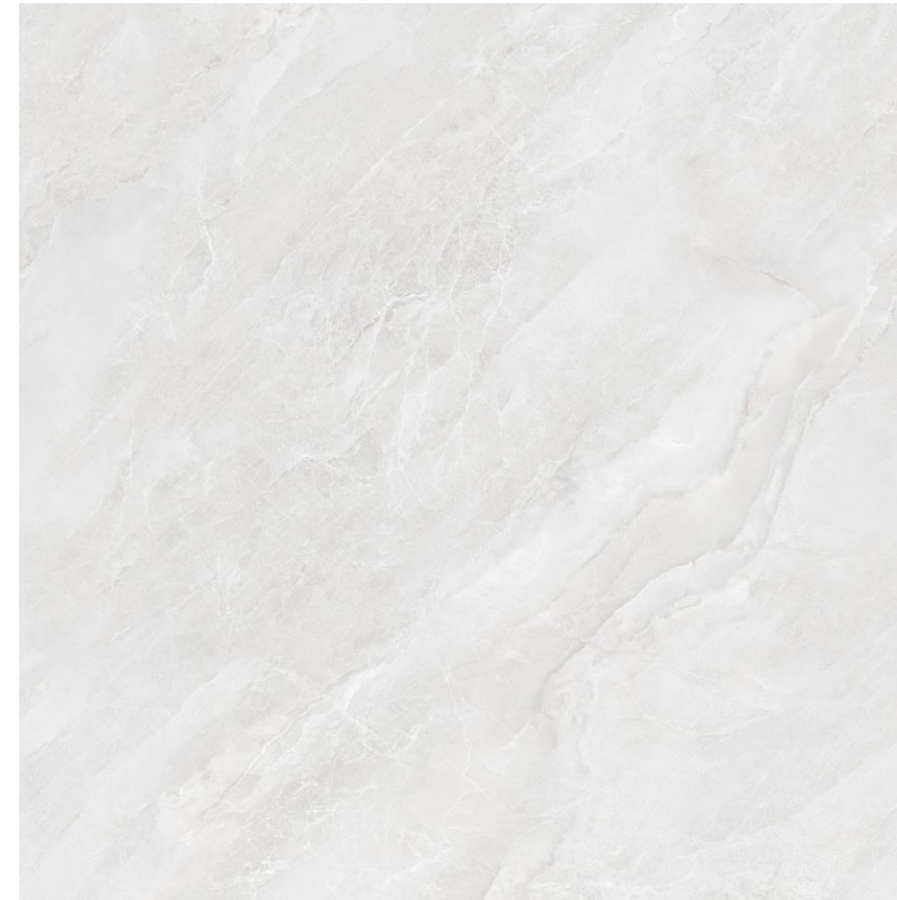
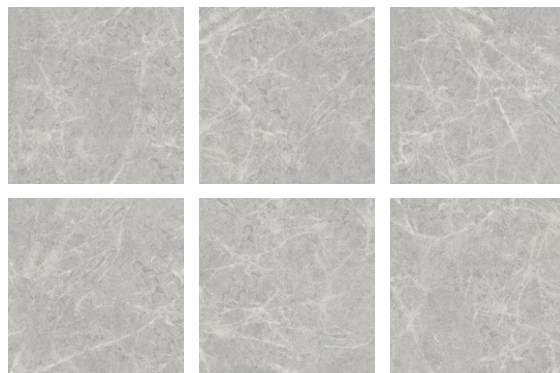
Phases:6
Glazed polished

Model Dimensions:
600x600mm 24"x24" ± 9mm

Model Number:
6FMB1163PM



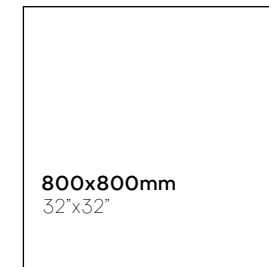
600x600mm
24"x24"



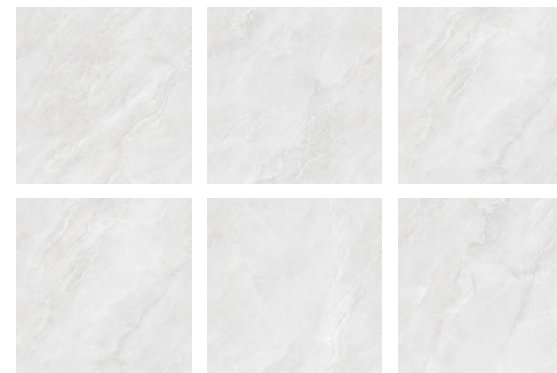
Phases:6
Glazed polished

Model Dimensions:
800x800mm 32"x32" ± 9mm

Model Number:
8FMB10733LPM



800x800mm
32"x32"



As exquisite as Milan fashion, as timeless as natural stone.



As exquisite as Milan fashion, as timeless as natural stone.

Classic Stone Era



Phases:6
Glazed polished

Model Dimensions:
800x800mm 32"x32" ±10mm

Model Number:
8FMB10738LPM



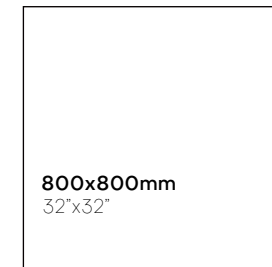
Classic everlasting, new stone era, reshaping the classic beauty of space.



Phases:6
Glazed polished

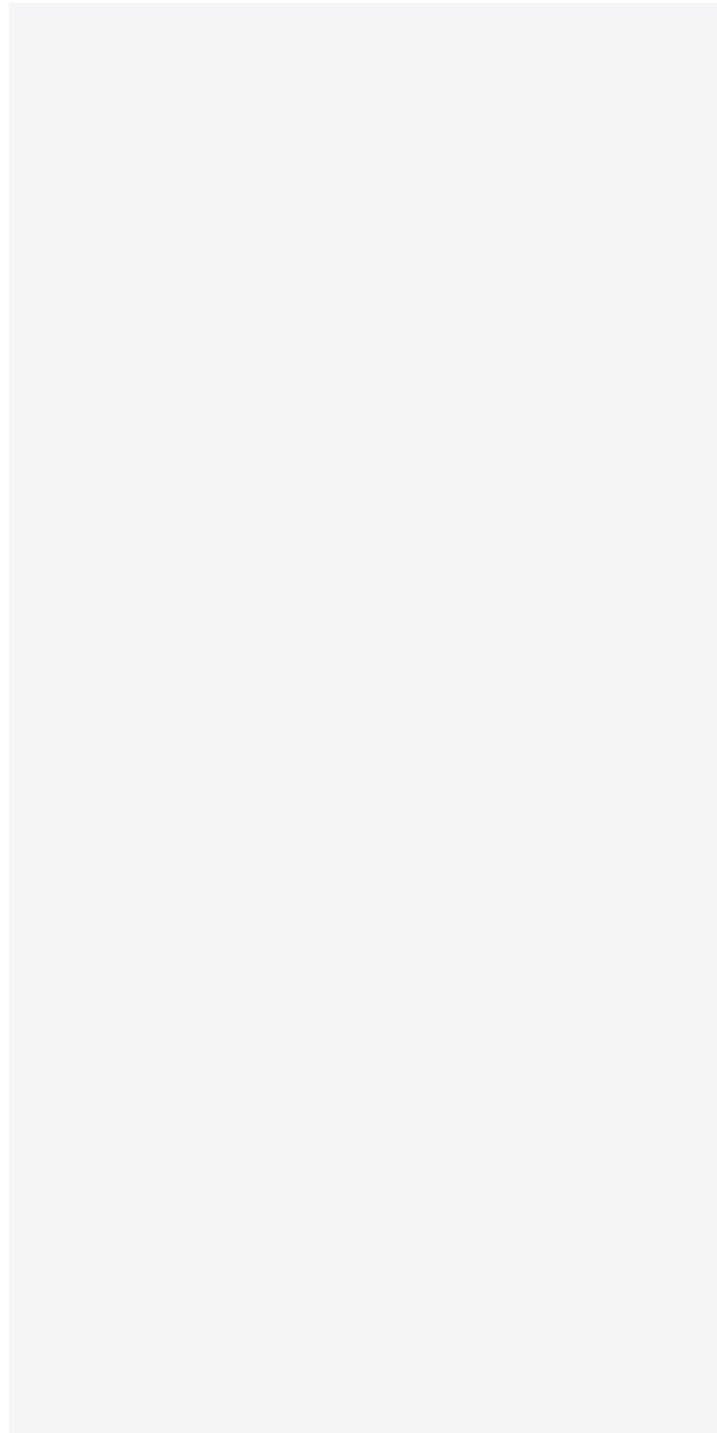
Model Dimensions:
800x800mm 32"x32" ±10mm

Model Number:
8FMB10735LPM



Classic everlasting, new stone era, reshaping the classic beauty of space.

Titian Stone



Phases:1
Glazed-matt

Model Dimensions:
300x600mm 12"x24" ± 9mm

Model Number:
30-60SDJ1000M



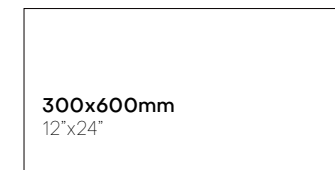
Artistic stone like Titian's paintings, imbuing spaces with rich artistic flavor.



Phases:1
Glazed-matt

Model Dimensions:
300x600mm 12"x24" ± 9mm

Model Number:
30-60SDJ2593M



Artistic stone like Titian's paintings, imbuing spaces with rich artistic flavor.

Titian Stone



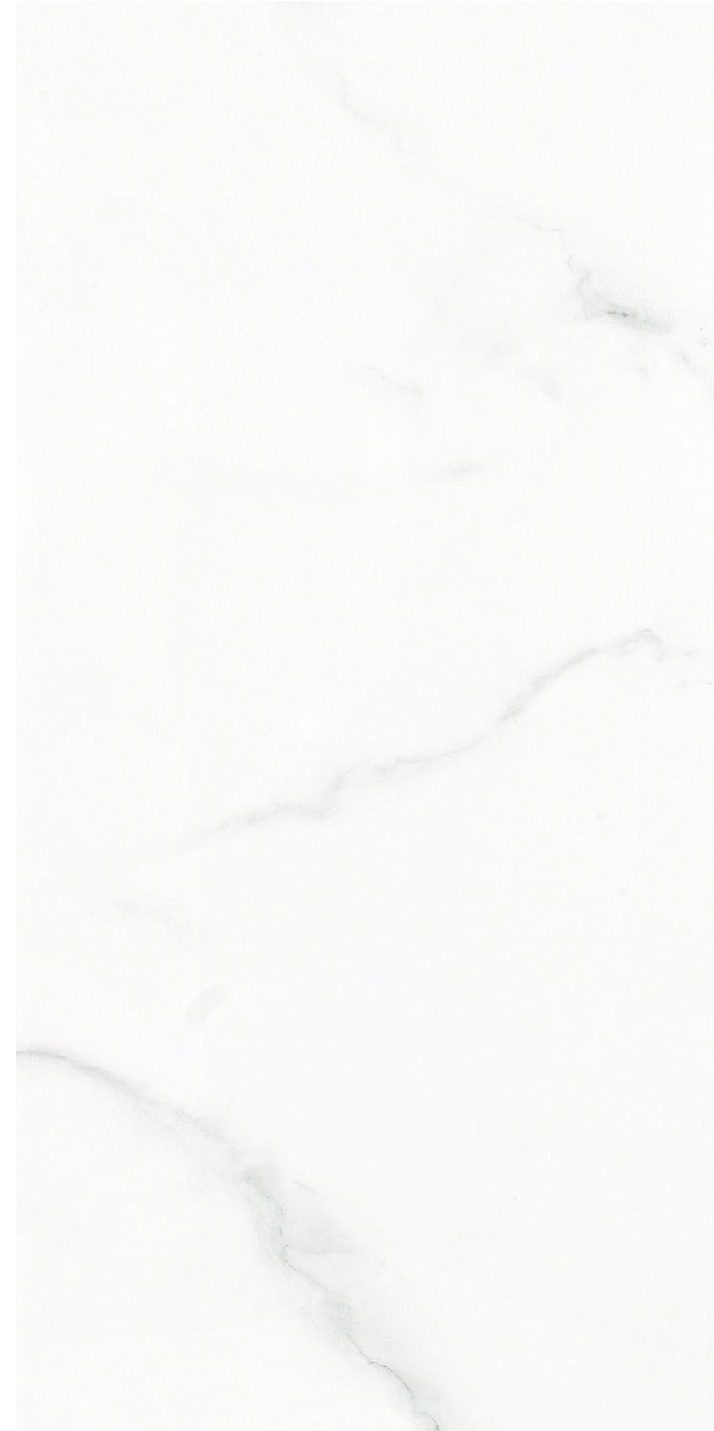
Phases: I
Glazed-matt

Model Dimensions:
300x600mm 12"x24" ± 9mm

Model Number:
30-60SDJ4151M



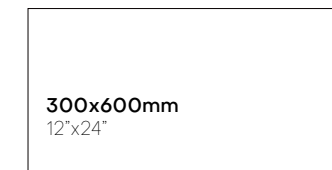
Artistic stone like Titian's paintings, imbuing spaces with rich artistic flavor.



Phases: I
Glazed-matt

Model Dimensions:
300x600mm 12"x24" ± 9mm

Model Number:
30-60SDJ2583M



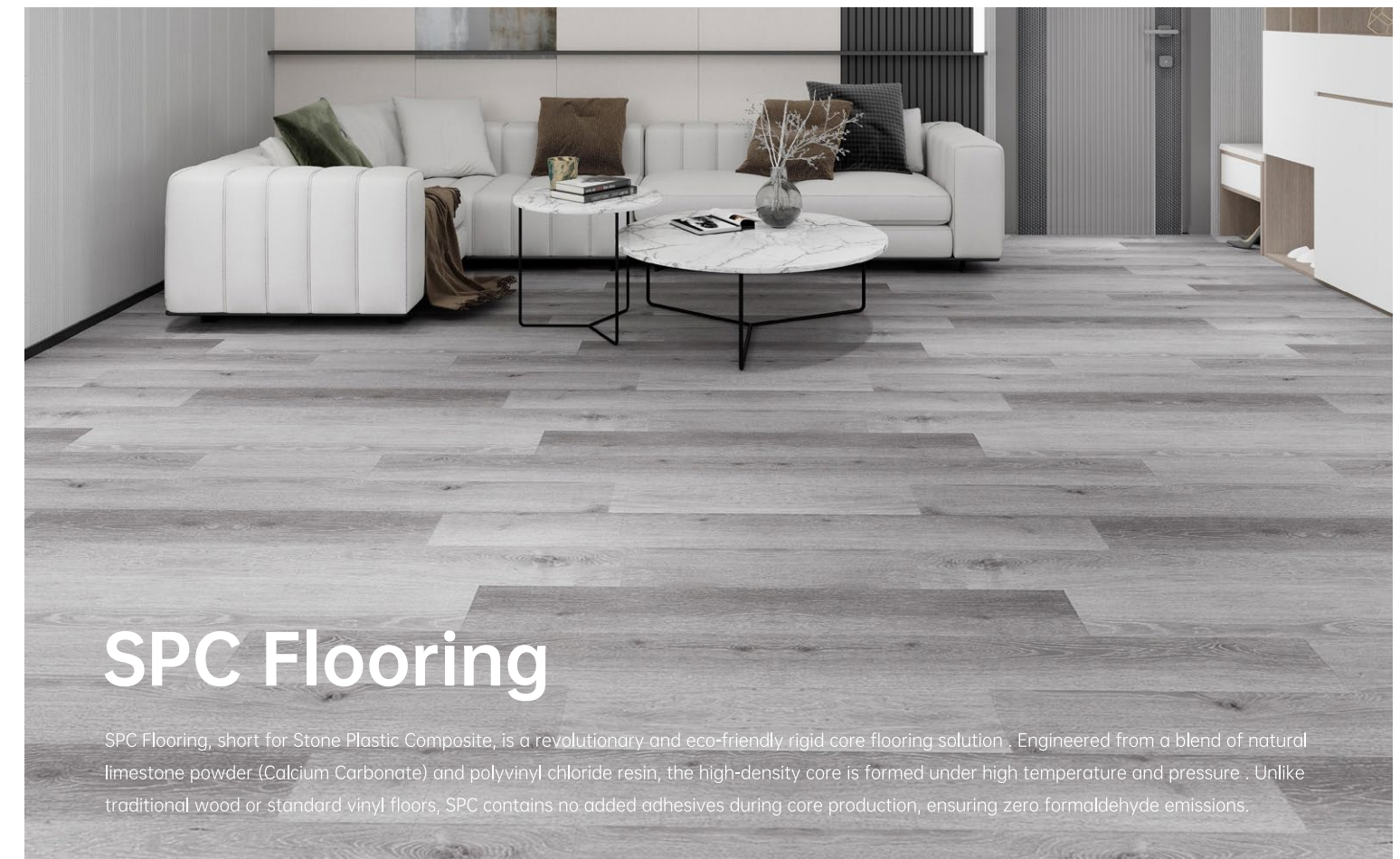
Artistic stone like Titian's paintings, imbuing spaces with rich artistic flavor.

ENDURING FOUNDATION

"Enduring Foundation" means "building the future with lasting commitment." This collection is tailor-made for large-scale projects and commercial spaces. Grounded in the logic of architecture itself, it prioritizes physical performance and colour stability, ensuring high uniformity and harmony in bulk applications. From the lobbies of luxury hotels to the public areas of urban complexes, Enduring Foundation silently supports every grand vision with dependable quality. It is the cornerstone of architecture, and more importantly, the cornerstone of trust.



Specification	Metho	Unit	SPC Click
Characteristics			
Usage Classification	EN-NF-ISO10874	/	E33/42
Dimensions (mm)	EN ISO 24342	mm	1524*228
Total Thickness	EN ISO 24346	mm	5mm
Wear layer thickness	EN ISO 24340	mm	0.5
Weight/ m²	EN ISO 23997	kg/ m²	8.04
Click type			Valinge2G
Performance			
Abrasion Resistance	EN13329	Pass 4000cycles	EN13329
Abrasion	EN660-2	group	EN660-2
Residual indentation	EN ISO 24343-1	mm	EN ISO 24343-1
Dimensional stability	EN ISO 23999	%	EN ISO 23999
Dimensional stability/curling	EN ISO 23999	mm	EN ISO 23999
Slip restraint	DIN 51130 EN13893	/	DIN 51130 EN13893
Wear Chemical resistance	EN ISO 26987	/	EN ISO 26987
Colour fastness to light	EN ISO 105-B02	/	EN ISO 105-B02
Flammability/Smoke emissions	EN13501-1	/	EN13501-1
Castor chair Resistance(Type W)	ISO 4918:2009	Cycle	ISO 4918:2009
Impact sound insulation Lw	ISO712-2	DB	ISO712-2
Thermal resistance	EN12667	/	EN12667
Electrostatic performance	EN1815	kV	EN1815
Lock strength	ISO24334	/	ISO24334
Surface treatment		/	EN 12524
Underfloor heating suitability	EN 12524	/	
Environment			
TVOC After 28 days(AgBB test)	ISO 16000-9	/	11
Formaldehyde group	EN717-1	class	E1
Plasticizer components	EN14372	/	100% Virgin PVC
Warranty			
Warranty Residential	/	/	25
Warranty Commercial	/	/	10



1. Zero Formaldehyde, Move-in Ready

Manufactured through a hot-extrusion process without using any glue, SPC flooring is free from formaldehyde, heavy metals, and phthalates. It is a 100% recyclable green material that allows immediate occupancy after installation.

2. 100% Waterproof, Moisture Proof

The rigid stone composite core is inherently non-hydrophilic, making the floor completely impervious to water. It will not swell, warp, or mold even when fully submerged. Ideal for kitchens, bathrooms, basements, and laundry rooms.

3. Superior Durability & Impact Resistance

With a density comparable to ceramic tiles, the SPC core offers exceptional impact resistance and point load performance. Combined with a heavy-duty wear layer, it withstands high traffic, pets, and moving casters without denting or scratching.

4. Fire Resistant, Safe at Home

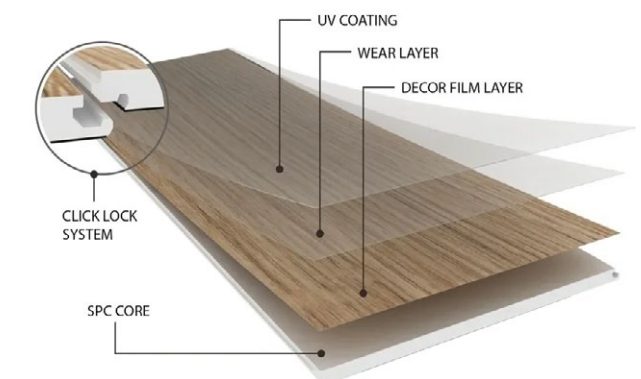
Rated B1 (flame retardant) in fire protection standards, SPC flooring does not catch fire easily and inhibits flame spread. It does not release toxic gases under high temperatures, ensuring maximum safety for your property.

5. Underfloor Heating Compatible

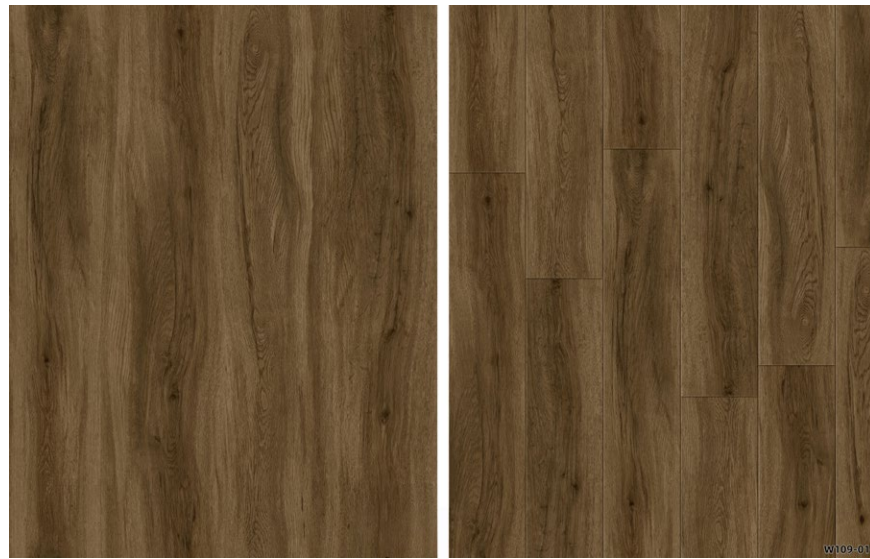
With minimal thermal resistance, SPC flooring transfers heat efficiently and evenly, making it perfectly compatible with underfloor heating systems. Its dimensional stability ensures it won't expand or contract excessively with temperature changes.

6. Click-Lock Installation, Hassle-Free

Featuring an integrated click-locking system, installation is quick and glue-free. It can be floated directly over most existing subfloors (tiles, concrete), saving time and labor costs during renovation.



Core Collection



MB26001

182 x 1220mm ± 9mm
7"x48"
228 x 1524 ± 9mm
9"x60"

5.0/0.5 mm(20mil)
Plus
1.0 mm IXPE



MB26004

182 x 1220mm
7"x48"
228 x 1524
9"x60"

5.0/0.5 mm(20mil)
Plus
1.0 mm IXPE



MB26002

182 x 1220mm
7"x48"
228 x 1524
9"x60"

5.0/0.5 mm(20mil)
Plus
1.0 mm IXPE



MB26005

182 x 1220mm
7"x48"
228 x 1524
9"x60"

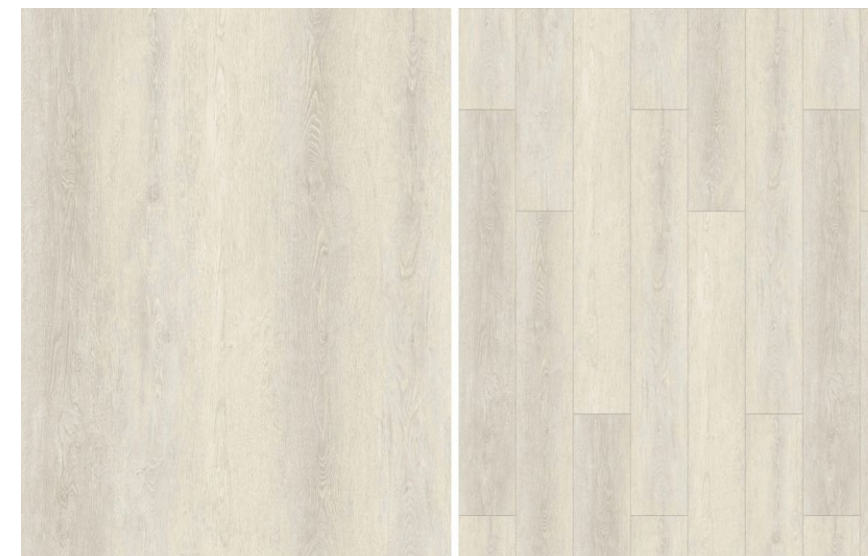
5.0/0.5 mm(20mil)
Plus
1.0 mm IXPE



MB26003

182 x 1220mm
7"x48"
228 x 1524
9"x60"

5.0/0.5 mm(20mil)
Plus
1.0 mm IXPE



MB26006

182 x 1220mm
7"x48"
228 x 1524
9"x60"

5.0/0.5 mm(20mil)
Plus
1.0 mm IXPE

Core Collection



MB26007

182 x 1220mm
7"x48"
228 x 1524
9"x60"

5.0/0.5 mm(20mil)
Plus
1.0 mm IXPE



MB26008

182 x 1220mm
7"x48"
228 x 1524
9"x60"

5.0/0.5 mm(20mil)
Plus
1.0 mm IXPE





EMBOSSED IN REGISTER

Embossed-in-Register (EIR) technology upgrades SPC flooring by creating a lifelike texture and appearance, replicating high-end wood flooring.

▶ VISUALLY

Embossed-in-Register (EIR) technology upgrades SPC flooring by creating a lifelike texture and appearance, replicating high-end wood flooring.

▶ LOWMAINTENANCE

It combines the beauty of natural materials with the durability and low maintenance of vinyl flooring, making it an excellent choice for various spaces.

▶ DIMENSION CUSTOM INFORMATION

182 x 1220mm/228 x 1524 mm

7" x 48"/9" x 60"

5.0/0.5 mm(12mil)

Plus

1.0 mm IXPE



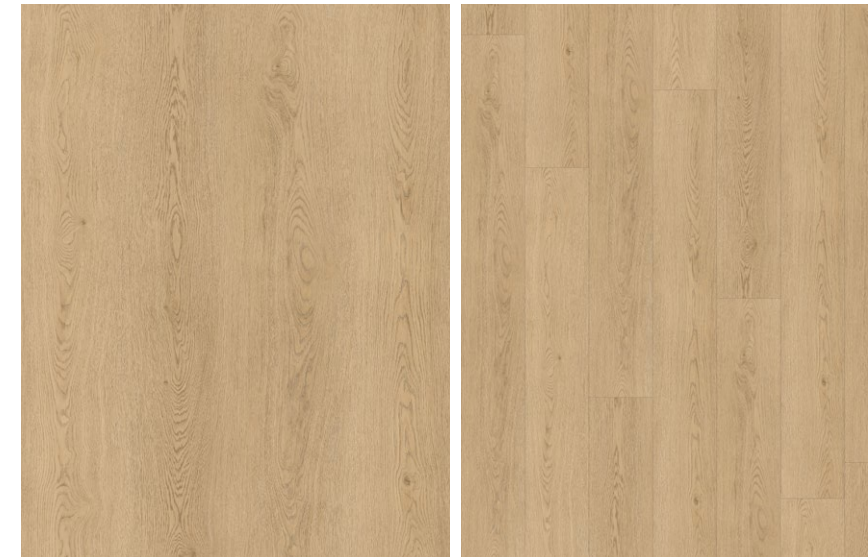
Authentic Wood Grain Series



ME26001

182 x 1220mm
7"x48"
228 x 1524
9"x60"

5.0/0.5 mm(20mil)
Plus
1.0 mm IXPE



ME26004

228 x 1524
9"x60"

5.0/0.5 mm(20mil)
Plus
1.0 mm IXPE



ME26002

182 x 1220mm
7"x48"
228 x 1524
9"x60"

5.0/0.5 mm(20mil)
Plus
1.0 mm IXPE



ME26005

182 x 1220mm
7"x48"
228 x 1524
9"x60"

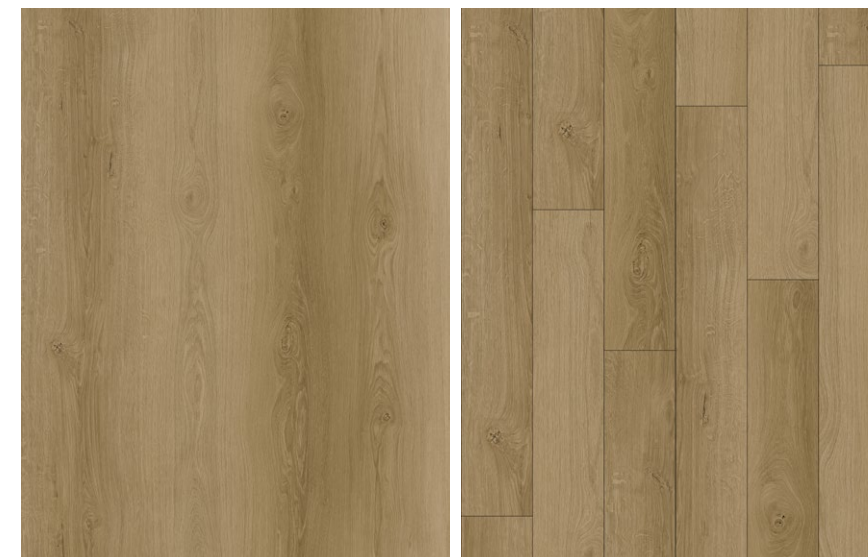
5.0/0.5 mm(20mil)
Plus
1.0 mm IXPE



ME26003

182 x 1220mm
7"x48"
228 x 1524
9"x60"

5.0/0.5 mm(20mil)
Plus
1.0 mm IXPE

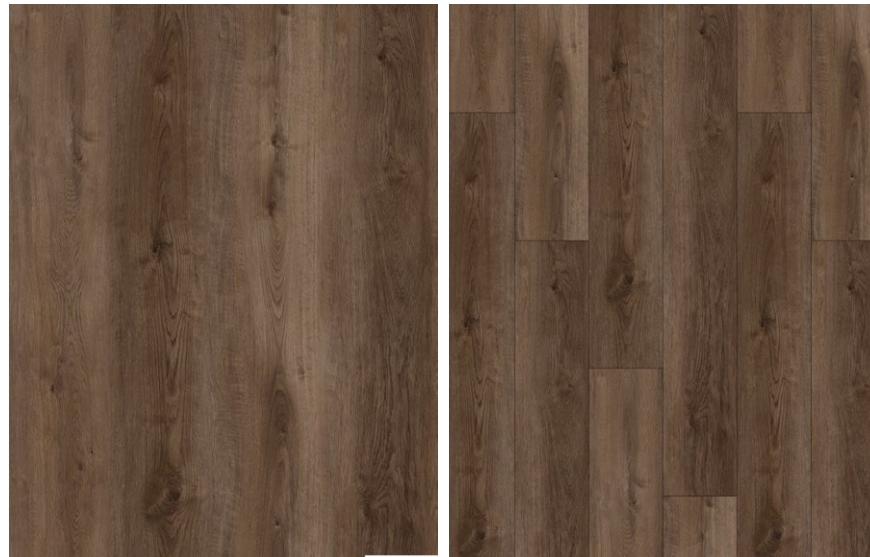


ME26006

182 x 1220mm
7"x48"
228 x 1524
9"x60"

5.0/0.5 mm(20mil)
Plus
1.0 mm IXPE

Authentic Wood Grain Series



ME26007

182 x 1220mm
7"x48"
228 x 1524
9"x60"

5.0/0.5 mm(20mil)
Plus
1.0 mm IXPE



ME26008

182 x 1220mm
7"x48"
228 x 1524
9"x60"

5.0/0.5 mm(20mil)
Plus
1.0 mm IXPE

