



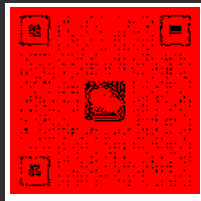
Shanghai Chuanli Industrial Co.,Ltd

Welcome to contact us.

.....



WhatsApp



WeChat

Tel

+86 18017914461

Email

info@kepuni.com

Web

www.kepuni.com

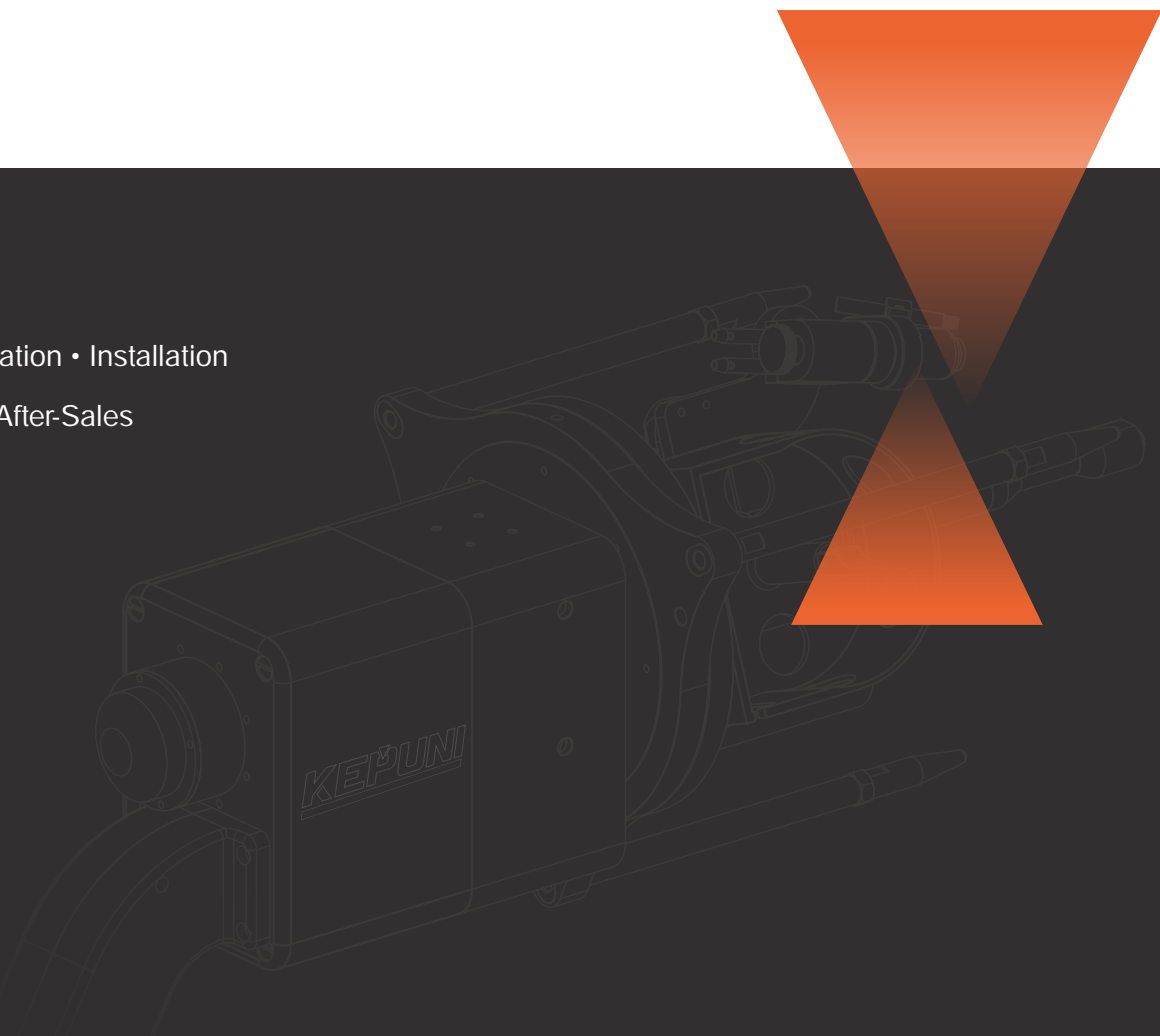
Address

No.2 building,No.688 Jiaqian Rd, Jiading District, Shanghai

Recruitment of global agents

Metal and pipe welding

-
- Customization • Installation
 - Training • After-Sales



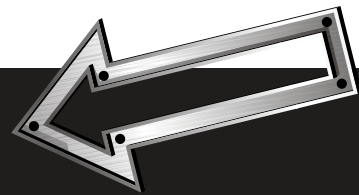
+86 180 1791 4461



ABOUT US

Company introduction 01
Certificate 03

Content



ORBITAL WELDING MACHINE

Product presentation 05
Closed pipe welder..... 07
Split welding gun..... 09
U-tube welder 11
TB-35 tube sheet welder 13

OPEN-TYPE PIPE WELDING

Open-type pipe welding machine 15
Open-type welding head 17
Automatic girth welding machine 19

ALL-POSITION TUBE-SHEET WELDER

Product presentation	21
Tube-sheet welder	23
Tube-sheet welding case	25

AUXILIARY EQUIPMENT

Precision auxiliary equipment	27
XD-L6Pro Industrial-grade automatic cold welding machine....	29
XD-L8 pro Intelligent Precision Weld Repair Machine	31
XD-1600 Multi-functional cold welding machine	32
XD-X3 Mould repair Machine	33
XD-08 Electric spark surfacing repair machine	34

ABOUT US

A widely trusted manufacturer



Shanghai Chuanli Industrial Co., Ltd.[Brand:KEPUNI] is a manufacturer with technological innovation as its core competitiveness, and is a mature integrated enterprise integrating research and development, manufacturing, sales and service.

Brand strength

For over a decade, KEPUNI has been a leader in automated welding, leveraging deep technical expertise and extensive practical experience. Our core R&D team is driven by customer needs and committed to innovation, developing welding solutions that deliver outstanding performance, stability, and reliability for clients worldwide.

The company's main products include full-position orbital welding machines, tube-sheet welding machines, open tube-to-tube welding machines, automatic circular seam welding machines, handheld laser welding machines, precision cold welding machines and other series of products. Guided by intelligence and automation, the R&D team continually overcomes technical challenges and has obtained multiple proprietary utility model patents, offering customers diversified, high-quality solutions.

Headquartered in Shanghai, with a modern production facility of approximately 10,000 m², KEPUNI demonstrates strong manufacturing scale and capabilities. Branch offices in Tianjin, Guangdong, Anhui, and Jiangsu support a nationwide service network. In recent years, the company has actively expanded into global markets through both online and offline channels, with products successfully sold in developed markets including the United States, Japan, and Singapore.

With growing brand value and international influence, KEPUNI has earned the trust and recognition of numerous global enterprises, continuing to lead the intelligent development of the welding industry.

10000⁺

Physical factory



300

Enterprise staffs



50⁺

Utility patent



50⁺

Research staff





COMMITTED TO PROVIDING PROFESSIONAL QUALITY SERVICE

Professional Service Team

Professional and strong technical team, technical training and operational guidance

Strong R&D team

Over than ten years of R & D team, provide customized services and welding solutions.

Lifetime VIP service

Once you purchase our machine, you will become a VIP customer and receive lifetime system updates.



CERTIFICATE



National high-tech enterprises ISO9001-ISO45001-ISO14001 ----- Eu CE certification ----- TÜV authentication



SRDI enterprises



Software authoring certificate



Software product certificate



Utility model patent certificate

KEPUNI has obtained multiple software copyright certificates and invention patents



WE INSIST ON 'SPEAKING WITH AUTHORITY AND QUALITY'

CNC machining centers ensure high-precision processing of core components. Source manufacturers, quality is more guaranteed after sale, before the factory through layers of testing to ensure the consistency of product quality



ORBITAL WELDING MACHINE

This power supply is specially designed and manufactured for pipe welding, covering in semiconductor, chemical, food, medicine, electronic pipeline, new energy, heat exchanger, refrigeration equipment, water treatment, liquid cooling industry, laboratory and other industries.

XD-20Pro

XD-20W



PRODUCT ADVANTAGES

- German orbital pipe welding technology features high welding qualification rate and can pass Level 1 radiographic inspection.
- Equipped with a Siemens PLC control system to ensure fast and accurate execution of process parameters. The compact design makes the machine suitable for high-altitude and on-site operations.
- With years of accumulated expert welding data, it can automatically generate intelligent expert parameters. It supports one-key printing and automatic printing, and is equipped with a built-in miniature maintenance-free printer.
- Equipped with a 10-inch high-definition color industrial display, it can operate continuously all day long. Imported core components from Germany ensure stable and durable performance of the equipment.
- Upgraded air duct cooling system delivers superior noise reduction, ensures reliable long-term operation of the equipment, and greatly improves the duty cycle of the welding torch.
- Equipped with an Ethernet interface, it can connect to the customer's MES system for real-time data collection, welding equipment monitoring and data interoperability.

MAIN TECHNICAL PARAMETERS

MODEL	XD-20PRO	XD-20W	XD-PD200
Duty cycle	200A 60% /155A 100%	200A 60% /155A 100%	200A 100%
Input voltage	AC220V ±10% 50Hz/60Hz	AC220V ±10% 50Hz/60Hz	AC90-265V 50Hz/60Hz
Floating voltage	90V	90V	65V
Power	4.5 KVA	4.5 KVA	4.5 KVA
Cooling method	Built-in circulating water cooling		
Partition Free Space	12 SET		
Insulation grade/Protection grade	F/IP21		
Welding current	5-200A		
Programmable memory	600 PIECE	200 PIECE	200 PIECE
Tank Volume	6L	6L	4L
Weight	34KG(Water inclusion)	33KG(Water inclusion)	20KG(Water inclusion)
Machine size	560×360×365mm	512×355×350mm	465×350×300mm
POWER SUPPLY FUNCTIONS			
DC/Pulse Current Control	●	●	●
Gas Control	●	○	○
Rotational Motion	●	●	●
Automatic Printing	●	●	●
Water Cooling Control	●	●	●
Overvoltage / Overload / Leakage Protection	●	●	●
Arc Ignition Failure Protection	●	●	●
Tungsten Electrode Short-Circuit Protection	●	●	●
Welding Torch Short-Circuit Alarm	●	●	●
Motor Current Alarm	●	●	●
Gas Lack Alarm	●	●	●
Welding Speed Detection	●	●	●
Arc Voltage Detection	●	●	●
Recipe Import & Export / Mouse Connectable	●	●	●
IoT Functionality	●	●	●
Network Interface for MES System	●	●	●
Argon Flow Setting	●	○	○
Water Flow / Water Temperature Detection	●	●	●
Welding Torch Automatic Identificatio	●	○	○
Welding Status Indicator Light	●	○	○

CLOSED PIPE WELDER

Specializing in all kinds of tube-to-tube welding



• XD-40 • XD-80 • XD-120 • XD-170

Model	XD-40	XD-80	XD-120	XD-170
Main power supply	XD-20Pro/XD-20W/XD-PD200			
Weldable materials	Carbon steel / stainless steel / titanium alloy, etc.			
Welding torch cooling	Water-cooling			
Welding shielding gas	Argon			
Welding pipe diameter range	6.35-38.1	10-76.2	19-114.3	38.1-168
	0.25"-1.5"	0.393"-3"	0.748"-4.5"	1.5"-6.614"
Wall thickness range (mm)	0.5-3.0	0.5-3.0	0.5-3.0	0.5-3.0
Rotation speed (rpm)	0.3-3.7	0.5-5.9	0.5-8.9	1.5-26.4
Weight (kg)	3.5	5	6.5	9.5
Overall dimensions [mm/inch]	381.5×120×48	438.5×172.5×52	513×226.5×48	650×331.5×163

Single-sided welding double-sided molding



Product advantages

✓ **High duty cycle**

Water cooling heat dissipation, keep long time working.

✓ **Lightweight and durable**

High quality insulation material and aluminum alloy.

✓ **Quick and easy replacement**

The welding torch fixture is a flexible grooved fixture

✓ **Convenient and efficient operation**

Equipped with 5 functional shortcut buttons.

High pass rate

Can pass RT expectation and so on.



SPLIT WELDING GUN

Miniature welding head for small, thin pipes; lightweight, easy to hold, and easy to switch when working on high-place.



Air cooling



• XD-5HF



• XD-10HF



• XD-9HF



• XD-8HF



• XD-8HPH



Water cooling



• XD-5H



Eccentric welding

• XD-5HP



• XD-10H

Model	XD-5H/5HF	XD-5HP	XD-10H/10F	XD-9HF	XD-8HF	XD-8HPH
Main power supply	XD-20Pro/XD-20W					
Weldable materials	Carbon steel / stainless steel / titanium alloy, etc.					
Welding pipe diameter range [mm/inch]	3.175-15.88	3.175-15.88	6.35-25.4	6-19.05	6-12.7	3.175-12.7
	0.125"-0.625"	0.125"-0.625"	0.25"-1"	0.23"-0.75"	0.23"-0.5"	0.125"-0.5"
Wall thickness range [mm]	0.5-1.5	0.5-1.5	0.5-1.5	0.5-1.5	0.5-1.5	0.5-1.5
Rotation speed [rpm]	0.6-9.0	0.6-9.0	0.6-9.0	0.6-9.0	0.6-9.0	0.6-9.0
Weight [with cable/kg]	5.75	6	6.2	4	4.02	11.6
Overall dimensions [mm]	155×70×50	169×74×167	170×100×55	95×265×35	255×66×29	269×157×193
Linear distance [mm]	≥ 19	Thick side 6 / Thin side ≥ 19	≥ 19	≥ 12	≥ 6	≥ 6

Designed specifically for narrow spaces

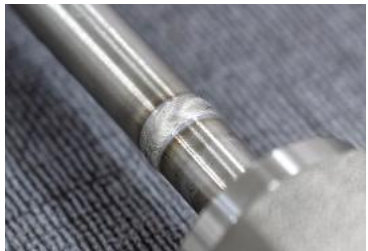
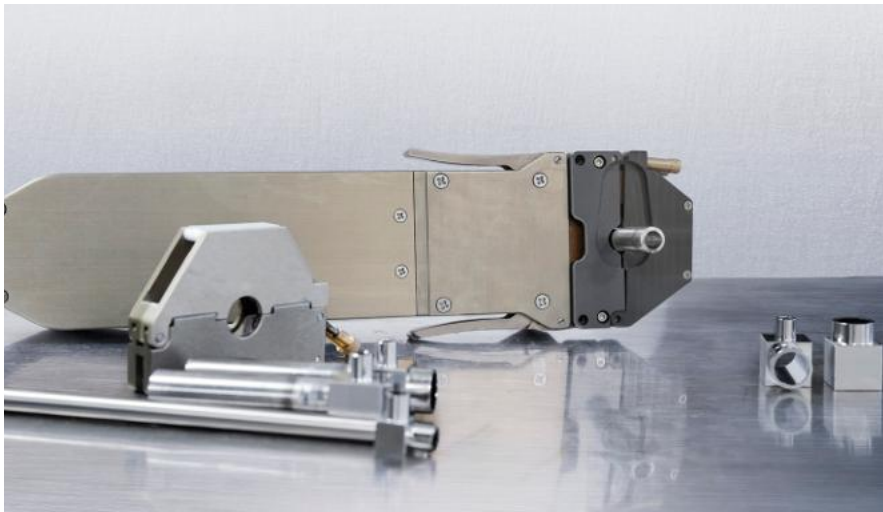
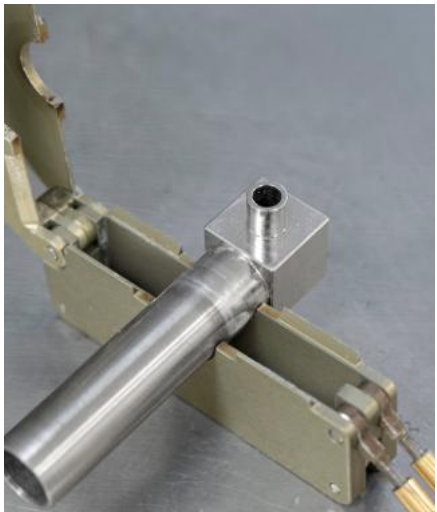
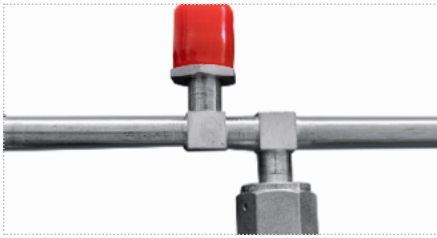
+ VCR

+ 90° elbow

+ Through joint

+ 90° reducing elbow

+ Tee pipe coupling



U-tube welder

Available for heat exchangers and the refrigeration industry. Compact welding joints.

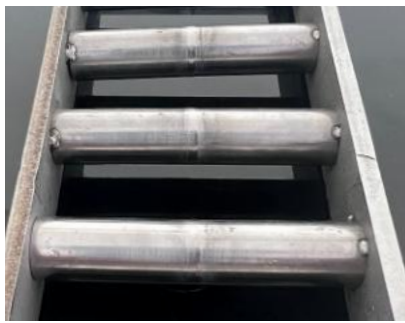


Model	U09	U12	U16	U21	U25	End - port welding	Necking welding
Main power supply	XD-20Pro/XD-20W						
Welding torch cooling	Water-cooling						
Wall thickness range [mm]	0.5-1.5						
Tungsten electrode specification[mm]	2.0	2.0	2.0	2.4	2.4	2.0	2.0
Tube center to tube center[mm]	≥ 25	≥ 32	≥ 35	≥ 42	≥ 52	25-52	38.1-52
Straight tube straight section [mm]	≥ 35	≥ 35	≥ 35	≥ 35	≥ 41	35-41	≥ 45
Elbow straight section[mm]	≥ 38	≥ 38	≥ 40	≥ 40	≥ 40	38-40	/
Welding pipe diameter [mm]	9.3-9.5	9-12.7	12.7-15.88	15.88-21	19-25	9.3-25	12.7-25
Tube row spacing [mm]	≥ 21.65	≥ 32	≥ 35	≥ 42	≥ 52	21.7~52	/
Welding torch weight [kg]	4.5	6.5	7	7.8	8	4.2-5	4.2-5
Overall dimensions [mm/inch]	401.5×80×95	393.5×80×95	382×80×95	400×80×95	415×110×126	245.6*182*50	274*72.5*53



Scope application

The weldable materials mainly include carbon steel, stainless steel, titanium alloy, etc. Single-sided welding with double-sided formation.



TB-35 tube sheet welder

For flush butt welding of pipes

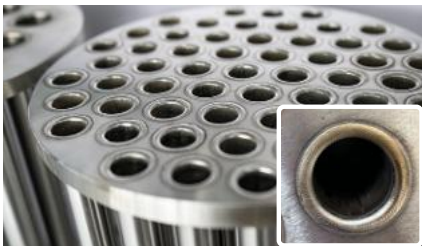


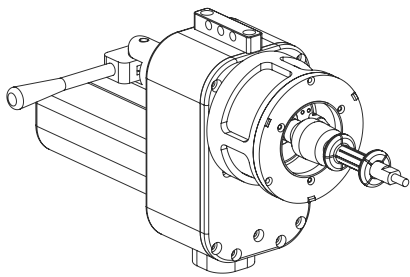
Matching power supply

XD-20Pro/XD-20W

Welding material	Carbon steel, stainless steel, titanium, nickel
Welding manner	Flat welding / Melting
protective gas	Argon
Welding torch rotation speed	0.2-3.5rpm
Welding wall thickness	0.5-2.5mm
Welding torch cooling method	Circulating water cooling
Tungsten electrode diameter	2.4mm
Tungsten electrode Angle	7°
Cable length	8m
Tube sheet gap	≤ 0.2mm
Tube extend	≤ 1mm

Model	TB-35 Rack-mounted	TB-35 Wall-mounted	TB-35 Wall-mounted[Small Pipe Diameter]
Positioning Method	Rack-mounted Copper Expansion Core + Rack Positioning	Pneumatic tightening + Copper Bushing Positioning	Pneumatic tightening + Copper Bushing Positioning
Welding Pipe Diameter	ID4.5 - OD35mm	ID13 - OD35mm	ID10 - OD13mm
Weight with Cable	6.84kg	7.64kg	7.45kg
Welding Torch Size	270×90×175mm	345×85×165mm	350×85×165mm
Rack Size	1760×1530×2140mm	/	/
Rack Stroke[XYZ]	1300× 800×1360mm		





TB-35 CASE

- ✓ Self - melting type, small volume, light weight
- ✓ One-click, mechanical expansion core copper sleeve positioning
- ✓ It is applicable to the flush welding of thin-walled tubes





OPEN-TYPE PIPE WELDING

Customized according to pipe diameter

Product advantages

- ✓ Intelligent and concise operation interface, easy to operate
- ✓ 400A, Passive arc initiation high-power supply, safer in use
- ✓ Built-in added USB interface + Ethernet interface + mini printer
- ✓ Large-capacity core storage technology
- ✓ Eight welding zones for precise parameter adjustment
- ✓ Failure detection function for real-time equipment protection
- ✓ MES Communication Interface

Power supply Model	XD-K200	XD-K400	XD-K500
Welding Current	5-200A	5-400A	5-500A
Maximum Power	5KVA	18KVA	25KVA
Input Voltage	100-265V	340~470V	340~470V
Main Unit Weight	55kg	58kg	72kg
Main Unit Volume	800×430×620mm		
Welding Torch Length	8m		
Storable Programs	200		
Divisible Zones	8		
Control functions	DC and pulse current control/gas control/rotational movement/automatic printing/wire feeding, arc voltage, and weaving control/AVC/OSC function		
Protection functions	IO monitoring/short circuit alarm/arc ignition failure/overvoltage/overload/phase loss detection/gas shortage detection/water temperature detection/water flow detection		

TIG welding

5G All-position pipe connection

Wire diameter

$\phi 1.0\sim 1.2$

Applicable material

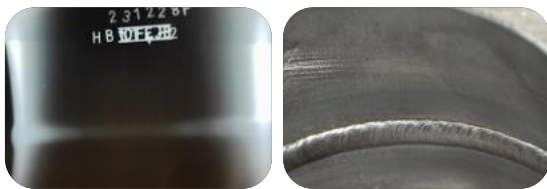
Carbon steel, stainless steel, titanium

Upgraded Version Touchscreen Handheld Control Box

- ▶ Real-time Parameter Synchronous Display
- ▶ Full-Color HD Resistive Touchscreen
- ▶ Strong Anti-Interference / Stable Communication

Optional Functions

- Hot Wire Welding
- Flange Welding



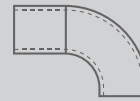
PIPE THICKNESS
2.5-13mm | Post-welding Level 1
Radiographic Inspection



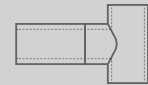
OPEN-TYPE WELDING HEAD



Pipe butt joint



Elbow joint



Tee Joint Connection



Flange Pipe Welding



Flat flange welding



PRODUCT SUPERIORITY

- AVC&OSC are adopted to automatically adjust the welding arc length, meeting the welding requirements of pipe fittings of different sizes
- Flexible monitors and controls the rotation speed of the welding head in real time, making its rotation more precise and stable
- Haval fixtures, which are and quick to install ,Remote Control via Handheld Unit



Welding head Model	K-76	K-114	K-168	K-219	K-273	K-325
Pipe diameter[mm/inch]	19-76	25-114	60-168	89-219	159-273	159-325
	0.75"-3.0"	0.98"-4.49"	2.36"-6.61"	3.50"-8.62"	6.26"-10.75"	4.69"-12.80"
Torch size[mm/inch]	255*255*300	320*300*300	445*400*300	625*470*300	640*510*355	610*600*355
Torch weight[kg]	4.5	7.8	11	19	20	25
Welding speed[rpm]	0.1-4.2	0.2-6.2	0.4-10.2	0.5-11.4	1.2-13.0	0.9-16.5
Wielding thickness[mm]	2.5-13	2.5-13	2.5-13	2.5-13	2.5-13	2.5-13
Bevel requirements	V/U	V/U	V/U	V/U	V/U	V/U
Welding wire reel[kg]	5/15	5/15	5/15	5/15	5/15	5/15
1KG Welding Wire Module	/	/	√	√	√	√

Meet complex and variable working conditions

Applicable to the welding of chemical/natural gas/power/ship/oil pipelines, with double-sided forming



AUTOMATIC GIRTH WELDING MACHINE

✓ IOT

✓ Heavy duty cycle

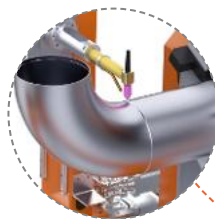
✓ USB import and export

+ PRODUCT SUPERIORITY

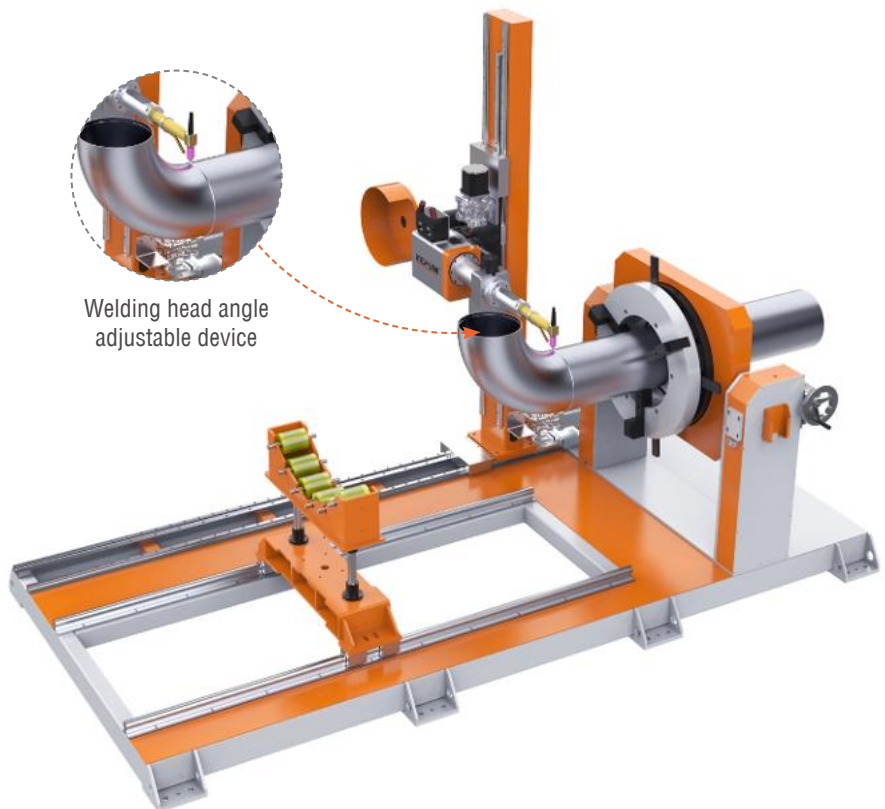
- Embedded in the pipeline welding database, XD-GH400 is a special power supply for TIG girth automatic welding independently developed, designed and manufactured by KEPUNI.
- A 400A welding power supply integrates the welding machine core, control module, arc voltage tracking, welding torch swinging, integrated wire feeding, circulating cooling water tank, printer module, IoT module, USB download interface as well as other hardware and program control components.
- Automatic girth welding program with more stable current output, automatic control of current output, wire feeding speed, positioner, circulating water and other parameters. Industrial touch screen+manual control box, double control system.



Remote control handle



Welding head angle adjustable device



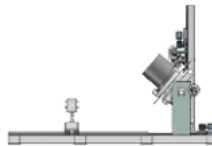


WELDING FORM

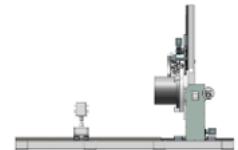
- Electric Chuck
- Manual Chuck



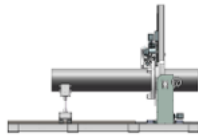
Pipe-flange internal fillet welding



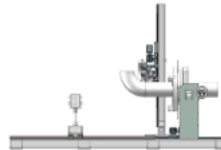
Pipe-flange external fillet welding



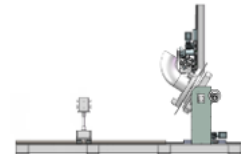
Pipe-high neck flange welding



Pipe-pipe welding



Pipe bend welding



Pipe bend-flange welding



▼ The above values can be customized as below

XD-GH400 Device power supply

Power supply	380V±10% 50Hz
Current range	5-400A
Heavy duty cycle	310A 100%/400A 60%
Control mode	PLC+DSP
Memory	200 groups
Rated power input	18KVA
Arc pressure height	0.1-9.9mm
Wire Feed Speed	10-1800mm/min
Angle swing of the torch	0.1-5mm
Type of cooling	Air cooling/built-in water cooling
Weight	120KG (including cooling water)
Overall dimensions	1150x630*940mm

XD-HF400/HF600 Welding rack

Connect the power	13 pin aviation plug
Motor form	Servo motor/planetary motorc
Rotating speed	0.1-4rpm
X-axis travel distance	170mm
Y-axis travel distance	900mm
Z-axis travel distance	550mm
Chuck through hole	Below a diameter of 138mm/357mm
Clamping range	Frontal clamping, φ15-210mm
Chuck rotation angle	0-90°
Total length of base	1600mm/1860mm/3000mm
Total width of base	1170mm/1370mm
Clamping range	15-700 mm

ALL-POSITION TUBE-SHEET WELDER



Internet of
Things[IOT]



O/I Alarm
monitoring



MES Communication
Interface



Data storage
and receiving



Control function

- 1 DC and pulse current control, gas control
- 2 Rotary motion, automatic manual print control
- 3 Water cooling control, wire optional control

Defensive function

- Overload
- Arc failure
- Tungsten needle short circuit
- Phase Loss Detection

Model	XD-G400
Welding current	5-400A
Rated input power	18KVA
Duty cycle	320A/ 60%
Floating voltage	73V
Input voltage	AC380V±20% 50Hz/60Hz
Welding head cooling	Built-in circulating water cooling
Memory	200
Partitionable interval	6
Protection grade	H/IP23
Weight	58kg
Dimension	800*430*620mm

+ ● Product advantages

Siemens PLC control system ensures fast, accurate and reliable operation of welding process parameters

Applicable to refrigeration, thermal power, valves, coal mines, construction machinery, boilers, nuclear power, chemical industry and other industries

Swiss DC planetary gear motor, precise and stable rotation operation, equipped with wired control handle and own operation button

Fault detection, directly display the error message, realize the IOT technology, no mail, Free remote maintenance

Insert USB disk can import and export welding program, can easily change welding process, can also export historical welding data

Real-time monitoring of welding process current/voltage/rotation speed/swing speed and other parameters, one-click printing and automatic printing function



XD-G400



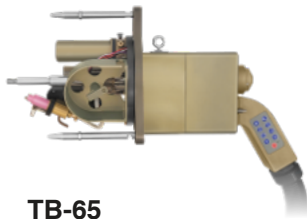
Upgraded Version Touchscreen Handheld Control Box

267*108*35mm



Tube-sheet welder

Provide customization



TB-65



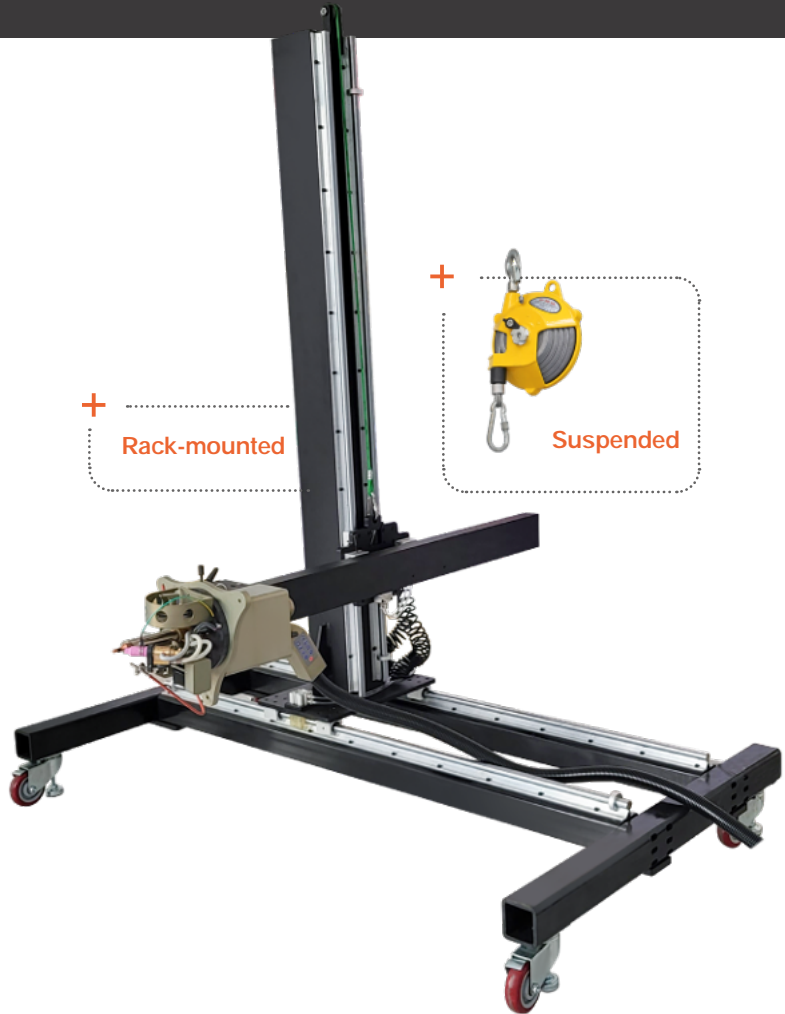
TBS-65



TBM-65



TBK-65



+ Rack-mounted

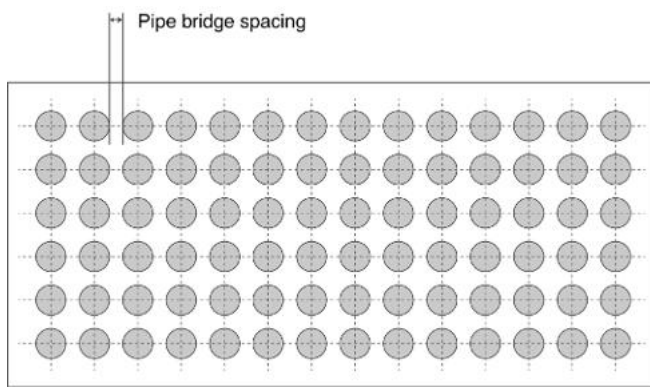
+ Suspended

Tube sheet welding head parameters

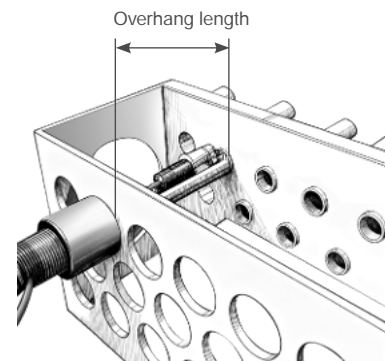
Matching power supply	XD-G400
Rotational Speed	0.7-5rpm
Wire Feed Speed	2200mm/min
Wire Spool	1kg
Shielding Gas	Argon gas
Cooling Method	Circulating water cooling
Cable Length	8.5m
Tube-Sheet Gap	<0.5mm
Technology	Self-melt/add filler wire



5 mm THE NARROWEST
PIPE SPACING



230 mm MAXIMUM
OVERHANG LENGTH



Detailed Parameters

Model	TB-65Rack-mounted	TB-65Wall-mounted	TBS-65Rack-mounted	TBM-65Suspended	TBK-65Suspended
Welding material	Carbon steel, stainless steel, titanium, nickel/alloy				stainless steel, carbon steel
Welded pipe diameter[mm]	ID Φ8, OD Φ65	ID Φ22, OD Φ65	ID Φ8, OD Φ 32	ID Φ13.5, OD Φ65	OD Φ25-32
Welding wall thickness	0.5-5mm				0.5-3.5mm
Positioning method	Rack-mounted Copper Expansion Core	Pneumatic Expansion Core Positioning	Rack-mounted Copper Bushing	Pneumatic Expansion Core Positioning	Positioning Copper Bushing + Limit Ring
Reach-in length	/				≤230mm (Including Plate Thickness)
Tube Sheet Type	Tubes Flush / Tubes Protruding 5-10mm			Tubes Flush / Tubes Protruding 3-10mm	Tubes Flush / Tubes Protruding ≤4mm
Tungsten needle diameter	2.4-3.0mm	2.4-3.0mm	2.4-3.0mm	2.4-3.0mm	2.4mm
Welding Torch Inclination Angle	≤45°	≤45°	≤45°	≤60°	-3°
Arc Length Adjustment Stroke	45mm	45mm	45mm	30mm	18mm
Wire Diameter	0.8-1.2mm	0.8-1.2mm	0.8-1.2mm	0.8-1.2mm	0.8mm
Head Weight	11kg	11kg	10.5kg	9kg	9.5kg
Size specification	621.5×250×291.5mm	621.5×250×291.5mm	525×250×295mm	649×120×301mm	748.9×230×242.6mm



TUBE SHEET WELDING

According to customer requirements, customized to meet the needs of welding equipment



TB-65 Wall-mounted



TB-65 Rack-mounted



TB-65 Wall-mounted



TB-65 Rack-mounted



TB-65 Rack-mounted



TB-65 Rack-mounted



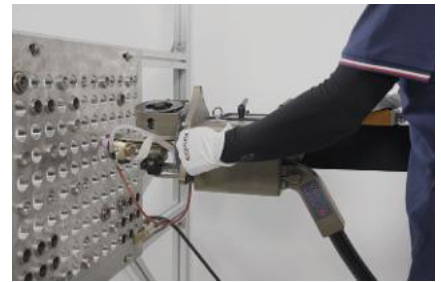
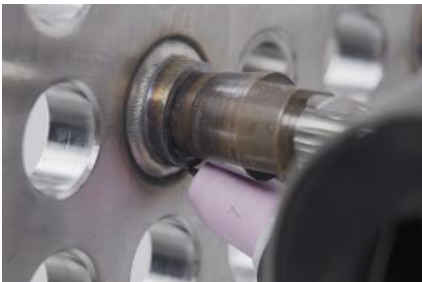
One - click operation of the pneumatic expanding core copper sleeve can quickly position the welding head.



Arc length automatic control device



TBM-65 Wall-mounted



TB-M65 Wall-mounted



TBK-65 Wall-mounted

Precision auxiliary equipment



Scope of application

- Plastic pipe(PE/PP/PV/DE/PVC)
- Copper pipe
- Cast iron pipe
- Ordinary structural steel pipe
- Galvanized pipe
- Aluminum pipe
- 304 stainless steel pipe

Planetary pipe cutting machine

The pipe to be cut is fixed on the "self-centering type" clamping device. The pipe will not deform. The cutting speed can be quickly adjusted according to the pipe diameter. Hold the cutting head and rotate it around the pipe once. Rotate the toothed blade to cut the pipe. There will be no burrs, no deformation, and the cut is absolutely vertical.

Model	XD-Q3B	XD-Q4	XD-Q6	XD-Q8	XD-Q12
Cutting range[mm]	6-80	12-120	16-171	55-228	140-330
Maximum cutting wall thickness	1-5mm				
Power	1300W brushless /1500W				
Motor voltage	220V,50/60Hz				
Rotating speed	85-210RPM(As the diameter increases, the speed decreases)				
Equipment size[mm]	600*450*500	640*500*550	690*550*630	660*500*640	830*550*800
Weight[kg]	33	60	70	71	108



DC Rechargeable version



AC Plug-in version

Tube facing machine

High-precision processing of special thin-walled stainless steel pipes, fast and efficient flat edge, no burrs on the end face after flat edge processing of the pipe, light, compact and easy to carry, high processing efficiency and strong power.

Model	Motor Type	Cutting Range	Cutting Wall Thickness	Net Weight
XD-1.0	AC	3-25.4mm	0.5-3.0mm	4.75kg
	DC	0.118-1.0 inch		2.1kg
XD-1.5	AC	3.0-38.1mm	0.5-3.0mm	5.1kg
	DC	0.118-1.5 inch		2.4kg
XD-2.0	AC	6.0-50.8mm	0.5-3.0mm	5.2kg
	DC	0.236-2.0 inch		2.55KG
XD-2.5	AC	9.0-63.5mm	0.5-3.0mm	5.4kg
	DC	0.354-2.5 inch		2.7kg
XD-3.0	AC	12.7-76.2mm 0.5-3.0 inch	0.5-5.0mm	6.65kg
XD-4.5	AC	12.7-114.3mm 0.5-4.5 inch	0.5-5.0mm	18.2kg



Tungsten grinding machine

Tungsten extreme surface processing equipment for grinding, cutting and end plane, used for grinding electrode tips that meet standards, replaceable, double-sided coated diamond grinding discs, grinding heads with different electrode angles and electrode diameters; Compact, lightweight and easy to carry; Suitable for the installation industry, with stable rotational speed, capable of cutting, sharpening and flat grinding.

Tungsten diameter(mm)	1.0/1.6/2.4/3.2
Grinding tungsten angle	22.5°/ 30°
Voltage	220v
Power	400w
speed regulation	Six speed regulation
weight	1.3kg



Electric pipeline beveling machine

The internal expansion pipe beveling machine is a portable device for installing inside the pipe diameter and beveling the pipe end face. The expansion and tightening mechanism is fixed on the inner wall of the pipe, which can automatically locate and align, and the installation is quick and simple.

Model	Inner diameter range	Maximum wall thickness per single cut	Cutter head rotation speed
BM-30	φ18-28mm	≤ 15mm	50
BM-80	φ28-76mm	≤ 15mm	48
BM-120	φ40-120mm	≤ 20mm	39
BM-159	φ65-159mm	≤ 20mm	34
BM-252	φ80-240mm	≤ 20mm	18
BM-352	φ150-330mm	≤ 20mm	15



Rapid Beveling Machine

This rapid beveling machine is specially designed for heat exchanger tubesheets and pipes. It adopts a pneumatically driven self-centering expanding mechanism, enabling automatic alignment, reducing manual positioning errors, and improving processing consistency.

Clamping diameter range	φ14-34mm	Pipe wall thickness for cutting	≤ 3.5mm
Processing diameter range	φ14-40mm	Pneumatic motor power	1.1kW
Axial feed stroke of tool holder	25mm	Air consumption	1.0m ³ /min
Machine speed	220rpm	Main machine weight	9kg

XD-L6Pro Industrial-grade automatic cold welding machine



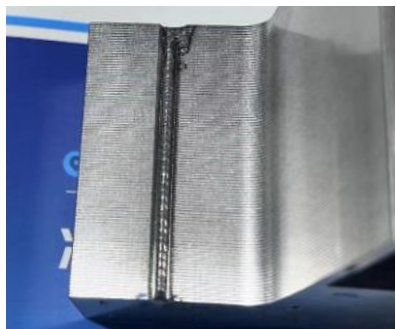
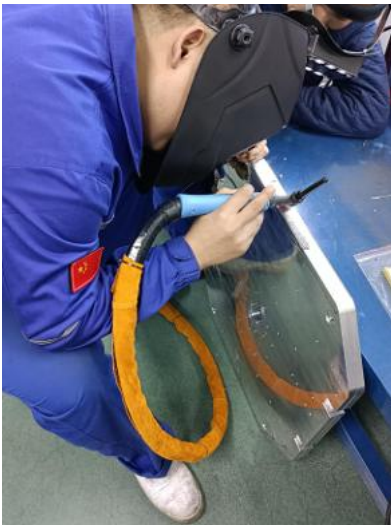
Equipment introduction

- ✓ The HB-L6Pro Industrial-grade Automatic Cold Welding Machine is China's first cold welding device that supports wide-voltage input.
- ✓ It has a voltage adaptation range of 100–265V and can deliver a precise welding current as low as 3A, which significantly improves the accuracy of welding and repair welding.
- ✓ The built-in PCB board of the equipment is equipped with a multi-protection system against overvoltage, overcurrent and surge, ensuring high safety and reliability.
- ✓ Compared with previous models, this machine has been upgraded with a larger-size touch screen for intuitive and convenient operation. It also integrates a variety of automatic detection and intelligent early-warning functions, providing comprehensive protection for welding quality and operation safety.

Technical parameter

Device model	XD-L6Pro	Welding current	3-200A
Operating frequency	50-60Hz	Water tank volume	6L
No-load voltage	71.8V	Equipment weight	37kg
Input voltage	AC100-265V	Overall dimensions	597*294*542mm/23.5*11.57*21.34in
Rated input power	4500W	Cooling system	Circulating water cooling
Screen type	Full-color touch screen	Parameter adjustment	Touch screen/encoder
Mode switching	Single point/Continuous/Pulse	Insulation protection level	F/IP 21s
Alarm function	Abnormal alarm for voltage/water temperature/argon gas	Protection function	Emergency stop due to abnormal voltage/current

Operation field case



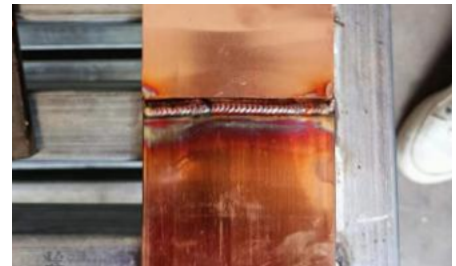
XD-L8 pro Intelligent Precision Weld Repair Machine

Product advantages

- ✓ It adopts an intelligent parameter storage function and advanced 485 communication technology, making operation simpler.
- ✓ Its unique principle, powerful functions, significant advantages, convenient operation, and built-in water cooling function make it an ideal choice in the field of large-area welding and repair.
- ✓ The high-definition touch screen enables precise control of output current, arc discharge time and interval time, featuring simple operation and low failure rate.
- ✓ With PFC wide-range voltage technology, it can normally strike an arc at 340~470V.



Equipment Model	XD-L8Pro
Power Supply Used	380V-50/60Hz
Power Consumption	10-8000W
Instantaneous Maximum Output Power	>160KW
Arc Initiation Energy	5-100
Continuous Arc Welding	0.2-5mm
Peak Current	5-400A Adjustable
Pre and Post Gas Supply Time	0-9.9s
Welding Wire Specification Range	0.2-6mm
Switching Mode	2T/4T
Cooling Method	Water Cooling
Main Unit Volume	640*310*820mm/25.2*12.2*32.28in
Equipment Weight	61kg
Protection Class	IP21S
Insulation Class	H
Adjustment Method	Touch Screen
Communication Interface	Analog Quantity, RS485
Storage	100 Groups of Automatic Memory Storage
Base Current	5-400A
Welding Mode	Single-Point Cold Welding/Continuous Cold Welding/Pulsed Welding/High-Frequency Welding

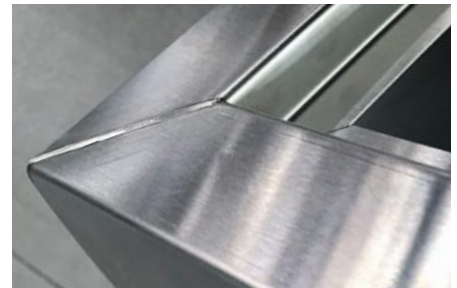


XD-1600 Multi-functional cold welding machine



Product advantages

- ✓ Functions: precision spot welding, automatic continuous pulse spot welding, welding wire parameter preset, argon arc welding function.
- ✓ Fast welding speed , the fastest welding speed can be 400mm/min, which is more than several times of the common welding machine in the market
- ✓ Machine net weight 9KG, easy to carry.
- ✓ The substrate has minimal damage, minimal thermal impact, no annealing deformation, and minimal damage.
- ✓ XD-1600 multifunctional cold welding machine is a new type of metal repair welding machine independently developed by our company with a single power supply current.suitable for welding steel,iron,copper,aluminum and other metal parts.



Power supply	220V±10% -50Hz
Power Consumption	10-1200w
Cold welding output	spot welding/continuous welding
Machinie size	455*200*295mm/17.91*7.87*11.61in
Weight	9kg
Welding wire size range	0.3-1.6mm
Thickness of cold welded plate	0.3-3.0mm
Thickness of argon arc plate	0.5-5.0mm
Maximum instantaneous power output	>40kw

XD-X3 Mould Repair Machine



Product advantages

- ✔ Suitable for all kinds of steel molds, mechanical parts, casting parts and other defects repair, can achieve 0.03mm repair precision, arbitrary stack height, can repair all kinds of flash, powder, wear, sand holes, pores, strain and so on.
- ✔ Low temperature has no thermal effect on the substrate, and the base material does not bite/collapse/deform;
- ✔ No tech requirements, modular design, digital display, more intuitive and convenient operation, no need for argon gas, plug and play.
- ✔ The thinnest 0.03mm flexible welding, set up precision welding repair mode and precision welding head, to solve the problem of precision workpiece operation.
- ✔ Adopt thin sheet material welding repair, no damage to the substrate, easy processing, quick repair speed.



Power supply	Single phase 220V±10% -50Hz
Pulse frequency	3-120Hz
Mode selection	General / Precision
Adjustment range of resistor rod	1-5
Weight	9kg
Power Consumption	10-1200w
Output current	Adjustable output pulse current
Cooling mode	Fan forced air cooling
The thickness of the surfacing	arbitrary
Machine size	415*200*245mm/16.34*7.87*9.65in

XD-08 Electric spark surfacing repair machine



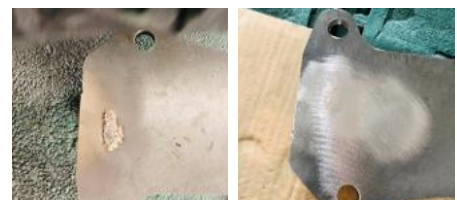
Casting defect repair

High repair accuracy, very small color difference between solder joints and base metal after welding, long standby time



Mold surface coating

Suitable for impact resistant mold or high temperature resistant surface, increase wear resistance.



Product advantages

- ✓ Welding repair for copper, iron and aluminum steel surface holes, sand holes, lack of flesh and other metal defects, as well as copper mold, aluminum mold.
- ✓ The large current circuit and the signal control circuit are fully isolated, which increases the stability of the machine;
- ✓ Can increase the heat resistance, impact resistance and wear resistance of the surface of the coated workpiece, prolong the service life;
- ✓ The thickness the coating can be adjusted arbitrarily, The standard thickness is 0.01-0.1mm;

Power supply	220V
Input power	1800W
Output Voltage	50-100V
Discharging percentage	10-100%
Core diameter	1.2-4.0mm
Protection grade	IP40
Weight	21.5kg
Machine size	370*270*450mm/14.57*10.63*17.72in

A GLOBALLY LEADING MANUFACTURER OF INTELLIGENT WELDING EQUIPMENT

Empowering Global Industrial Upgrading · Sincerely inviting
strategic distributor partners



Serve customers from **52** countries around the world,
with over **12,000** units of equipment delivered in total.

Trust Sealed. TÜV Certified.





**RECRUITMENT
OF GLOBAL AGENTS**

Come and join us

