

星途 · 野奢帐篷

酒店帐篷 | 野奢帐篷 | 星空帐篷

Luxury Tent Safari Tent Dome Tent

 www.stars-tent.com



Stars Tent

星途帐篷



公司简介

COMPANY PROFILE

星途帐篷 - 致力于为豪华露营提供最佳的帐篷解决方案。广东星途建筑科技有限公司是一家专注于野奢酒店帐篷的规划、设计、制造和安装为一体的综合性企业。星途帐篷不断研发创新型的建筑材料和技术，为了促进生态环保和可持续发展，我们的团队设计了与自然相融合的可移动式帐篷，它分为三个系列：野奢帐篷，豪华酒店帐篷，星空帐篷。它被广泛用于旅游、酒店、度假村、营地和旅馆。

同时，这些帐篷已广泛销往中国各省市，以及海外中东市场，亚洲、北美洲、欧洲等多个国家。

Stars Glamping – Dedicated To Provide The Best Tent Solutions For Luxury Glamping. We specialize in luxury tent glamping planning, design, manufacturing and installation. We are constantly developing innovative building materials and technologies, in order to promote eco-friendly and sustainable development. Our team was designed to blend with nature, it have divided into three series be Luxury Tent, Safari Tent, Dome Tent. It is widely used in tourism, hotels, resorts, camps & lodges.

Meanwhile, these tents have been widely sold to various provinces and cities in China, as well as overseas Middle East market, Asia, North America, Europe and many other countries.

产品目录

PRODUCT CATALOG

野奢帐篷

Safari Tent

轻骑帐篷 - Venus

星野帐篷 - Vega

星行者帐篷 - Draco

印第安帐篷 - Teepee

星云帐篷 - Chalet

阁楼帐篷 - Loft

兰陵帐篷 - Aries

安曼帐篷 - Mars

探险者系列 - Wild

灯笼帐篷 - Lantern

帆船帐篷 - Jupiter

星隐帐篷 - Milo

小屋帐篷 - Taurus

飞星帐篷 - Epic

狩猎帐篷 - Superstar

游牧帐篷 - Lodestar

鸭舌帽帐篷 - Hat

牧野帐篷 - Pluto

TiPi帐篷 - TiPi

铁骑帐篷 - Neptune

小重山帐篷 - House

弯月帐篷 - Army

豪华酒店帐篷

Luxury Tent

贝壳帐篷 - Shell

广陵帐篷 - Mercury

苍溪帐篷 - Scorpio

琅琊帐篷 - Uranus

天水帐篷 - Gemini

洛阳帐篷 - Libra

临夏帐篷 - Patron

肯尼亚帐篷 - Tethys

云中帐篷 - Cloud

星宿帐篷 - Pieces

姑苏帐篷 - Square

长安帐篷 - House

朝歌帐篷 - Hexagon

楼兰帐篷 - Saturn

华阳帐篷 - Capricor

扶风帐篷 - Reception

昭苏帐篷 - Octagon

阿勒泰帐篷 - Villa

金字塔帐篷 - Pyramid

秋蝉帐篷 - Cocoon

星空帐篷

Glamping Dome

玻璃帐篷 - Glass Dome

PC帐篷 - Polycarbonate Dome

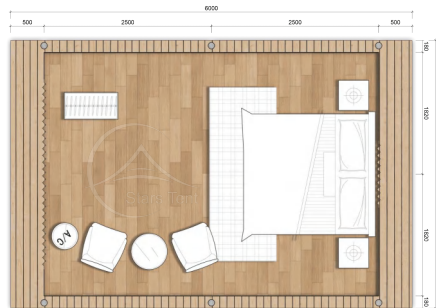
星空帐篷 - Glamping Dome



1

轻骑帐篷 QQ24

Safari Tent - Venus



产品参数

Product Parameters

主体框架 Main Frame	φ80mm 进口芬兰松防腐实木 φ 80mm Plywood Wooden Pole Frame
外帐材质 Outer Cover	850g/m ² PVC双面刀刮涂层布 850g/sqm PVC Coated Polyester Fabric
内帐材质 Inner Cover	900D高密涂层弹丝牛津布 900D Oxford Canvas Fabric
抗风级别 Wind Resistance	8级 80km/h

产品规格

Product Specifications

尺寸 Dimension	投影面积 Floor Area	室内面积 Inner Dimension	容纳人数 Capacity (Guests)
4 x 6m	24m ²	20m ²	2



2

星隐帐篷 XY18

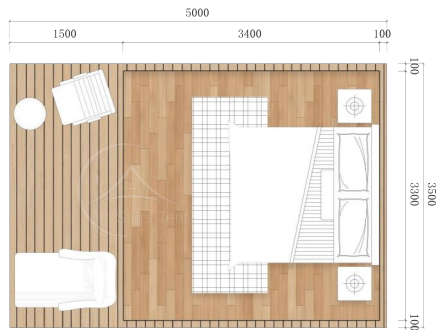
Safari Tent - Milo



产品参数

Product Parameters

主体框架 Main Frame	φ80×60mm 进口芬兰松防腐实木 φ80mm Plywood Wooden Pole Frame
外帐材质 Outer Cover	850g/m ² PVC双面刀刮涂层布 850g/sqm PVC Coated Polyester Fabric
内帐材质 Inner Cover	900D高密涂层弹丝牛津布 900D Oxford Canvas Fabric
抗风级别 Wind Resistance	8级 80km/h



产品规格

Product Specifications

尺寸 Dimension	投影面积 Floor Area	室内面积 Inner Dimension	容纳人数 Capacity (Guests)
3.5 x 5m	20m ²	18m ²	2



3

小屋帐篷 XW24

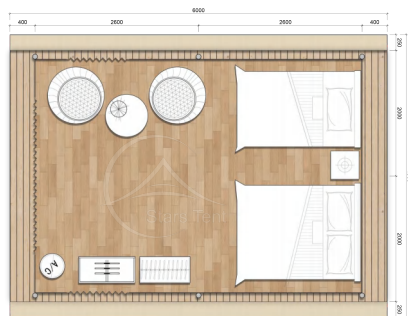
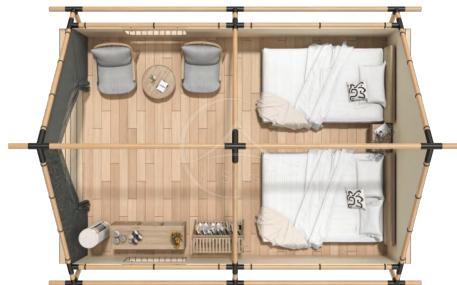
Safari Tent - Taurus



产品参数

Product Parameters

主体框架 Main Frame	φ80mm 进口芬兰松防腐实木 φ 80mm Plywood Wooden Pole Frame
外帐材质 Outer Cover	850g/m ² PVC双面刀刮涂层布 850g/sqm PVC Coated Polyester Fabric
内帐材质 Inner Cover	900D高密涂层弹丝牛津布 900D Oxford Canvas Fabric
抗风级别 Wind Resistance	8级 80km/h



产品规格

Product Specifications

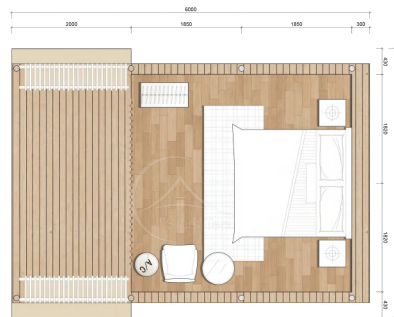
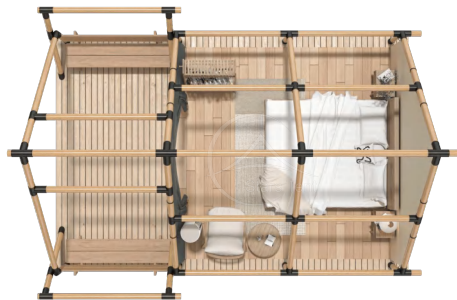
尺寸 Dimension	投影面积 Floor Area	室内面积 Inner Dimension	容纳人数 Capacity (Guests)
4 x 6m	24m ²	20m ²	2



4

星野帐篷 XY24

Safari Tent - Vega



产品参数

Product Parameters

主体框架 Main Frame	φ80mm 进口芬兰松防腐实木 φ 80mm Plywood Wooden Pole Frame
外帐材质 Outer Cover	850g/m ² PVC双面刀刮涂层布 850g/sqm PVC Coated Polyester Fabric
内帐材质 Inner Cover	900D高密涂层弹丝牛津布 900D Oxford Canvas Fabric
抗风级别 Wind Resistance	8级 80km/h

产品规格

Product Specifications

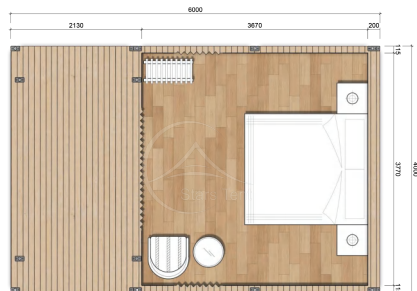
尺寸 Dimension	投影面积 Floor Area	室内面积 Inner Dimension	容纳人数 Capacity (Guests)
4 x 6m	24m ²	13m ²	2



5

星行者1号 XXZ1

Safari Tent - Draco



产品参数

Product Parameters

主体框架 Main Frame	φ48×2mm 烤漆镀锌钢管 φ48×2mm Hot Galvanized Steel Pipe
外帐材质 Outer Cover	850g/m² PVC双面刀刮涂层布 850g/sqm PVC Coated Polyester Fabric
内帐材质 Inner Cover	900D高密涂层弹丝牛津布 900D Oxford Canvas Fabric
抗风级别 Wind Resistance	8级 80km/h

产品规格

Product Specifications

尺寸 Dimension	投影面积 Floor Area	室内面积 Inner Dimension	容纳人数 Capacity (Guests)
4 x 6m	24m ²	16m ²	2 - 4



6

星行者4号 XXZ2

Safari Tent - Columba



产品参数

Product Parameters

主体框架 Main Frame	φ48×2mm 烤漆镀锌钢管 φ48×2mm Hot Galvanized Steel Pipe
外帐材质 Outer Cover	850g/m ² PVC双面刀刮涂层布 850g/sqm PVC Coated Polyester Fabric
内帐材质 Inner Cover	900D高密涂层弹丝牛津布 900D Oxford Canvas Fabric
抗风级别 Wind Resistance	8级 80km/h

产品规格

Product Specifications

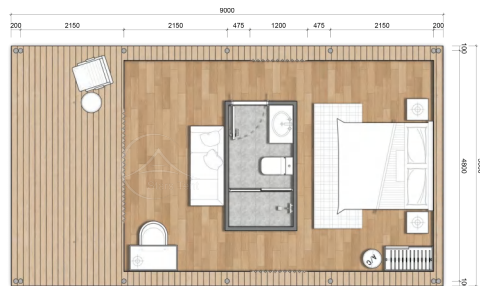
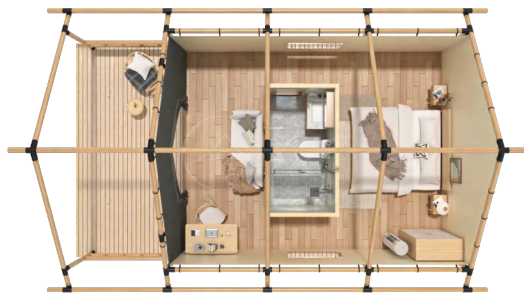
尺寸 Dimension	投影面积 Floor Area	室内面积 Inner Dimension	容纳人数 Capacity (Guests)
4 x 3m	14m ²	12m ²	2 - 4



7

狩猎帐篷 SL45

Safari Tent - Superstar



产品参数

Product Parameters

主体框架 Main Frame	φ80mm 进口芬兰松防腐实木 φ 80mm Plywood Wooden Pole Frame
外帐材质 Outer Cover	850g/m ² PVC双面刀刮涂层布 850g/sqm PVC Coated Polyester Fabric
内帐材质 Inner Cover	900D高密涂层弹丝牛津布 900D Oxford Canvas Fabric
抗风级别 Wind Resistance	8级 80km/h

产品规格

Product Specifications

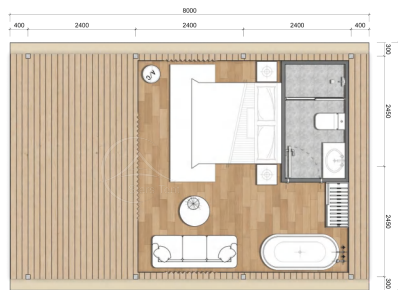
尺寸 Dimension	投影面积 Floor Area	室内面积 Inner Dimension	容纳人数 Capacity (Guests)
5 x 7m	35m ²	20m ²	2
5 x 9m	45m ²	30m ²	2 - 4



8

星云帐篷 XY40

Safari Tent - Chalet



产品参数

Product Parameters

主体框架 Main Frame	100×80mm 进口芬兰松防腐实木 100×80mm Plywood Wooden Pole Frame
外帐材质 Outer Cover	850g/m ² PVC双面刀刮涂层布 850g/sqm PVC Coated Polyester Fabric
内帐材质 Inner Cover	900D高密涂层弹丝牛津布 900D Oxford Canvas Fabric
抗风级别 Wind Resistance	8级 80km/h

产品规格

Product Specifications

尺寸 Dimension	投影面积 Floor Area	室内面积 Inner Dimension	容纳人数 Capacity (Guests)
5 x 8m	44m ²	24m ²	2



9

游牧帐篷 YM40

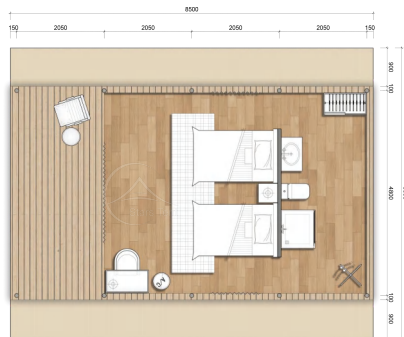
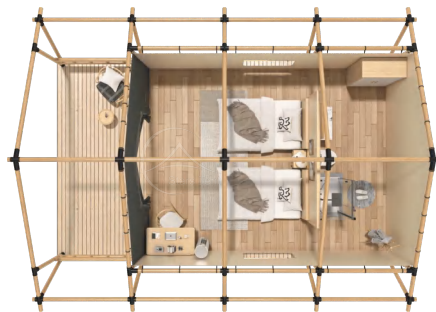
Safari Tent - Lodestar



产品参数

Product Parameters

主体框架 Main Frame	φ80mm 进口芬兰松防腐实木 φ80mm Plywood Wooden Pole Frame
外帐材质 Outer Cover	850g/m ² PVC双面刀刮涂层布 850g/sqm PVC Coated Polyester Fabric
内帐材质 Inner Cover	900D高密涂层弹丝牛津布 900D Oxford Canvas Fabric
抗风级别 Wind Resistance	8级 80km/h



产品规格

Product Specifications

尺寸 Dimension	投影面积 Floor Area	室内面积 Inner Dimension	容纳人数 Capacity (Guests)
5 x 7m	44 m ²	22m ²	2
5 x 9m	58 m ²	32m ²	2 - 4



10

飞星帐篷 FX45

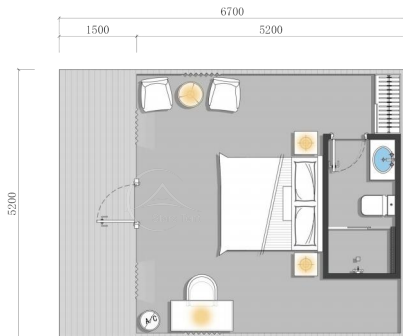
Safari Tent - Epic



产品参数

Product Parameters

主体框架 Main Frame	φ80mm 进口芬兰松防腐实木 φ80mm Plywood Wooden Pole Frame
外帐材质 Outer Cover	850g/m ² PVC双面刀刮涂层布 850g/sqm PVC Coated Polyester Fabric
内帐材质 Inner Cover	900D高密涂层弹丝牛津布 900D Oxford Canvas Fabric
抗风级别 Wind Resistance	8级 80km/h



产品规格

Product Specifications

尺寸 Dimension	投影面积 Floor Area	室内面积 Inner Dimension	容纳人数 Capacity (Guests)
5 x 7m	46m ²	23m ²	2
5 x 9m	59m ²	32m ²	2 - 4



11

兰陵帐篷 LL40 Safari Tent - Aries



产品参数

Product Parameters

主体框架 Main Frame	φ100mm 进口芬兰松防腐实木 φ 80mm Plywood Wooden Pole Frame
外帐材质 Outer Cover	850g/m ² PVC双面刀刮涂层布 850g/sqm PVC Coated Polyester Fabric
内帐材质 Inner Cover	900D高密涂层弹丝牛津布 900D Oxford Canvas Fabric
抗风级别 Wind Resistance	8级 80km/h

产品规格

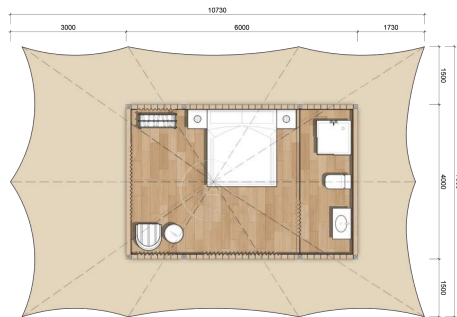
Product Specifications

尺寸 Dimension	投影面积 Floor Area	室内面积 Inner Dimension	容纳人数 Capacity (Guests)
5 x 8m	45m ²	30m ²	2



12

探险者1924 Safari Tent - Wild



产品参数

Product Parameters

主体框架 Main Frame	76×2mm 烤漆镀锌钢管 76×2mm Hot Galvanized Steel Pipe
外帐材质 Outer Cover	850g/m ² PVC双面刀刮涂层布 850g/sqm PVC Coated Polyester Fabric
内帐材质 Inner Cover	900D高密涂层弹丝牛津布 900D Oxford Canvas Fabric
抗风级别 Wind Resistance	8级 80km/h

产品规格

Product Specifications

尺寸 Dimension	投影面积 Floor Area	室内面积 Inner Dimension	容纳人数 Capacity (Guests)
4 x 6m	70m ²	24m ²	2



13

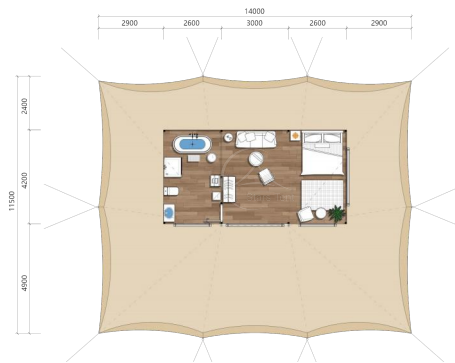
探险者1935 Safari Tent - Heath



产品参数

Product Parameters

主体框架 Main Frame	76×2mm 烤漆镀锌钢管 76×2mm Hot Galvanized Steel Pipe
外帐材质 Outer Cover	850g/m ² PVC网格布 850g/sqm PVC Coated Polyester Fabric
内帐材质 Inner Cover	900D高密涂层弹丝牛津布 900D Oxford Canvas Fabric
抗风级别 Wind Resistance	8级 80km/h



产品规格

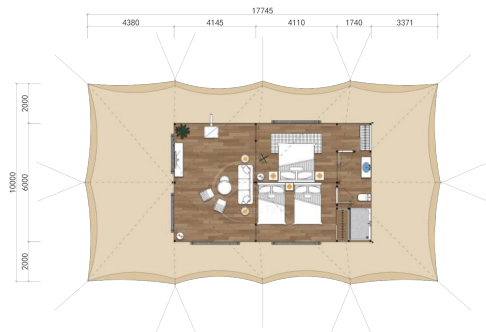
Product Specifications

尺寸 Dimension	投影面积 Floor Area	室内面积 Inner Dimension	容纳人数 Capacity (Guests)
4.2 x 8.2m	161m ²	35.5m ²	2



14

探险者1960 Safari Tent - Moor



产品参数

Product Parameters

主体框架 Main Frame	76×2mm 烤漆镀锌钢管 76×2mm Hot Galvanized Steel Pipe
外帐材质 Outer Cover	850g/m ² PVC网格布 850g/sqm PVC Coated Polyester Fabric
内帐材质 Inner Cover	900D高密涂层弹丝牛津布 900D Oxford Canvas Fabric
抗风级别 Wind Resistance	8级 80km/h

产品规格

Product Specifications

尺寸 Dimension	投影面积 Floor Area	室内面积 Inner Dimension	容纳人数 Capacity (Guests)
6 x 10m	177m ²	60m ²	2 - 4



15

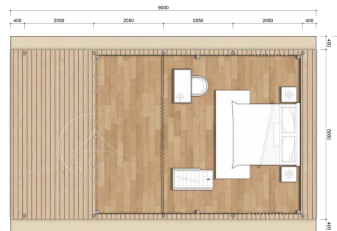
阁楼帐篷 GL45

Luxury Tent - Loft



一层视图

Ground Floor Layout



二层视图

Loft (2nd Floor) Layout

产品参数

Product Parameters

主体框架 Main Frame	φ100mm 进口芬兰松防腐实木 φ 100mm Plywood Wooden Pole Frame
外帐材质 Outer Cover	850g/m ² PVC双面刀刮涂层布 850g/sqm PVC Coated Polyester Fabric
内帐材质 Inner Cover	900D高密涂层弹丝牛津布 900D Oxford Canvas Fabric
抗风级别 Wind Resistance	8级 80km/h

产品规格

Product Specifications

尺寸 Dimension	投影面积 Floor Area	一层室内面积 Ground Floor Interior Area	二层室内面积 Loft (2nd Floor) Interior Area	容纳人数 Capacity (Guests)
5 x 9m	52m ²	30m ²	20m ²	2 - 4



16

牧野帐篷 MY60

Safari Tent - Pluto



产品参数

Product Parameters

主体框架 Main Frame	φ80mm 进口芬兰松防腐实木 φ 80mm Plywood Wooden Pole Frame
外帐材质 Outer Cover	850g/m ² PVC双面刀刮涂层布 850g/sqm PVC Coated Polyester Fabric
内帐材质 Inner Cover	900D高密涂层弹丝牛津布 900D Oxford Canvas Fabric
抗风级别 Wind Resistance	8级 80km/h



产品规格

Product Specifications

尺寸 Dimension	投影面积 Floor Area	室内面积 Inner Dimension	容纳人数 Capacity (Guests)
8 x 9m	120m ²	45m ²	2 - 4



17

安曼帐篷 AM63

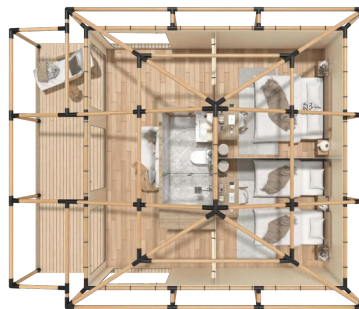
Safari Tent - Mars



产品参数

Product Parameters

主体框架 Main Frame	φ100mm 进口芬兰松防腐实木 φ 100mm Plywood Wooden Pole Frame
外帐材质 Outer Cover	850g/m ² PVC双面刀刮涂层布 850g/sqm PVC Coated Polyester Fabric
内帐材质 Inner Cover	900D高密涂层弹丝牛津布 900D Oxford Canvas Fabric
抗风级别 Wind Resistance	8级 80km/h



产品规格

Product Specifications

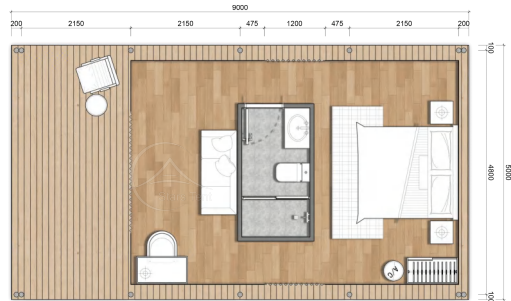
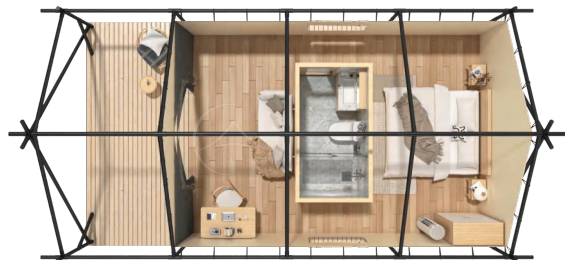
尺寸 Dimension	投影面积 Floor Area	室内面积 Inner Dimension	容纳人数 Capacity (Guests)
7 x 9m	75m ²	45m ²	2 - 4



18

铁骑帐篷 TQ45

Safari Tent - Neptune



产品参数

Product Parameters

主体框架 Main Frame	76×2mm 烤漆镀锌钢管 76×2mm Hot Galvanized Steel Pipe
外帐材质 Outer Cover	850g/㎡PVC双面刀刮涂层布 850g/sqm PVC Coated Polyester Fabric
内帐材质 Inner Cover	900D高密涂层弹丝牛津布 900D Oxford Canvas Fabric
抗风级别 Wind Resistance	9级 80km/h

产品规格

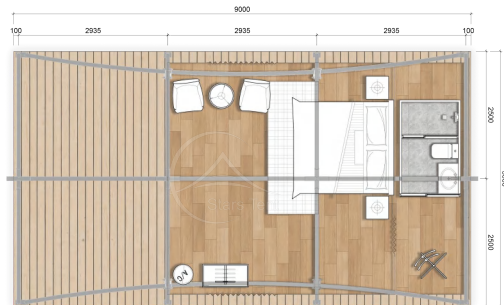
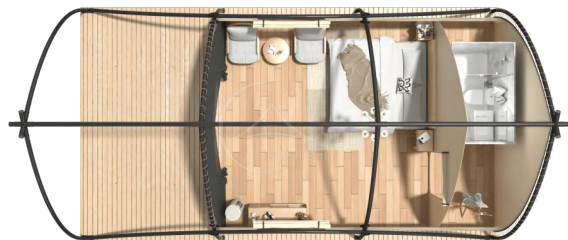
Product Specifications

尺寸 Dimension	投影面积 Floor Area	室内面积 Inner Dimension	容纳人数 Capacity (Guests)
5 x 7m	35㎡	20㎡	2
5 x 9m	45㎡	30㎡	2 - 4



19

帆船帐篷 FC45 Safari Tent - Jupiter



产品参数

Product Parameters

主体框架 Main Frame	76×2mm 烤漆镀锌钢管 76×2mm Hot Galvanized Steel Pipe
外帐材质 Outer Cover	850g/m ² PVC双面刀刮涂层布 850g/sqm PVC Coated Polyester Fabric
内帐材质 Inner Cover	900D高密涂层弹丝牛津布 900D Oxford Canvas Fabric
抗风级别 Wind Resistance	9级 80km/h

产品规格

Product Specifications

尺寸 Dimension	投影面积 Floor Area	室内面积 Inner Dimension	容纳人数 Capacity (Guests)
5 x 7m	35m ²	20m ²	2
5 x 9m	45m ²	30m ²	2 - 4



20

弯月帐篷 WY45

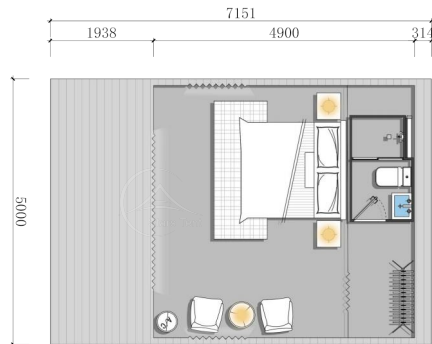
Safari Tent - Army



产品参数

Product Parameters

主体框架 Main Frame	60×60×2 mm 烤漆镀锌钢管 60×60×2 mm Hot Galvanized Steel Pipe
外帐材质 Outer Cover	850g/m ² PVC双面刀刮涂层布 850g/sqm PVC Coated Polyester Fabric
内帐材质 Inner Cover	900D高密涂层弹丝牛津布 900D Oxford Canvas Fabric
抗风级别 Wind Resistance	8级 80km/h



产品规格

Product Specifications

尺寸 Dimension	投影面积 Floor Area	室内面积 Inner Dimension	容纳人数 Capacity (Guests)
5 x 7m	35m ²	20m ²	2
5 x 9m	45m ²	30m ²	2 - 4



21

鸭舌帽帐篷 YSM36

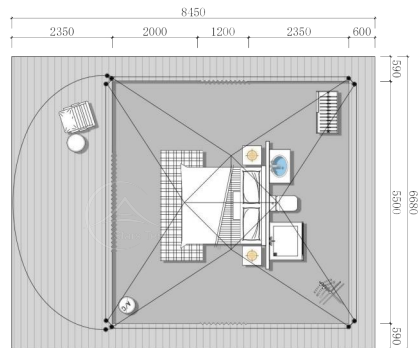
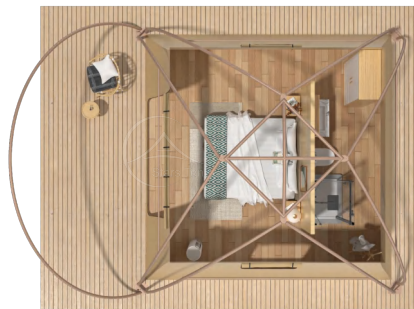
Safari Tent - Hat



产品参数

Product Parameters

主体框架 Main Frame	48×2 mm 烤漆镀锌钢管 60×60×2 mm Hot Galvanized Steel Pipe
外帐材质 Outer Cover	850g/㎡PVC双面刀刮涂层布 850g/sqm PVC Coated Polyester Fabric
内帐材质 Inner Cover	900D高密涂层弹丝牛津布 900D Oxford Canvas Fabric
抗风级别 Wind Resistance	8级 80km/h



产品规格

Product Specifications

尺寸 Dimension	投影面积 Floor Area	室内面积 Inner Dimension	容纳人数 Capacity (Guests)
5.5 x 5.5m	45 m ²	30m ²	2



22

印第安帐篷 YDA36

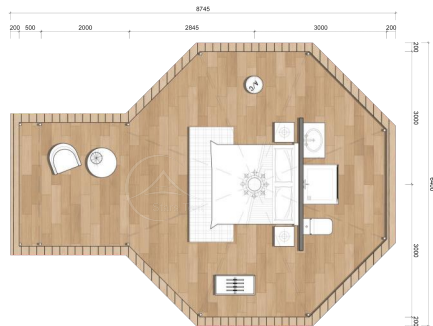
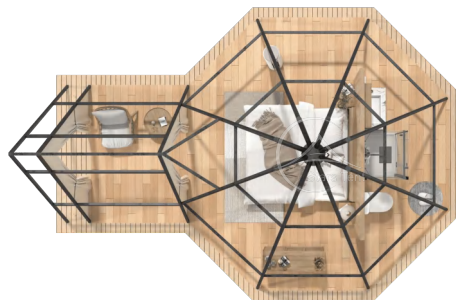
Safari Tent - Teepee



产品参数

Product Parameters

主体框架 Main Frame	76×2mm 烤漆镀锌钢管 76×2mm Hot Galvanized Steel Pipe
外帐材质 Outer Cover	850g/m ² PVC双面刀刮涂层布 850g/sqm PVC Coated Polyester Fabric
内帐材质 Inner Cover	140g绗棉保温内衬 140g Quilted Cotton Insulation Lining
抗风级别 Wind Resistance	9级 80km/h



产品规格

Product Specifications

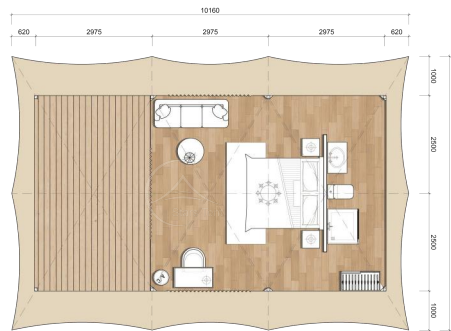
尺寸 Dimension	投影面积 Floor Area	室内面积 Inner Dimension	容纳人数 Capacity (Guests)
6 x 8.5m	42m ²	36m ²	2



23

小重山帐篷 XCS45

Safari Tent - Leo



产品参数

Product Parameters

主体框架 Main Frame	80×80×3mm 烤漆镀锌钢管 80×80×3mm Hot Galvanized Steel Pipe
外帐材质 Outer Cover	850g/m ² PVC双面刀刮涂层布 850g/sqm PVC Coated Polyester Fabric
内帐材质 Inner Cover	900D高密涂层弹丝牛津布 900D Oxford Canvas Fabric
抗风级别 Wind Resistance	9级 80km/h

产品规格

Product Specifications

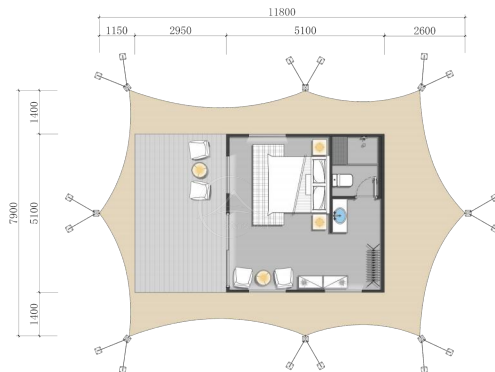
尺寸 Dimension	投影面积 Floor Area	室内面积 Inner Dimension	容纳人数 Capacity (Guests)
5 x 9m	70m ²	30m ²	2



24

星宿帐篷 XS40

Luxury Tent - Pieces



产品参数

Product Parameters

主体框架 Main Frame	φ100mm 进口芬兰松防腐实木 φ 80mm Plywood Wooden Pole Frame
外帐材质 Outer Cover	850g/m ² PVC双面刀刮涂层布 850g/sqm PVC Coated Polyester Fabric
立面墙体 Facade/Solid wall	复合水泥泡沫保温墙板 Composite cement foam insulation board
抗风级别 Wind Resistance	9级 80km/h

产品规格

Product Specifications

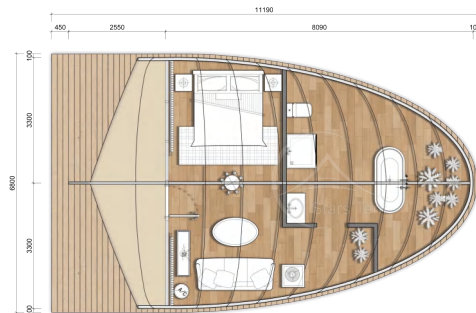
尺寸 Dimension	投影面积 Floor Area	室内面积 Inner Dimension	容纳人数 Capacity (Guests)
5 x 8m	75 m ²	25m ²	2



25

贝壳帐篷 BK40

Luxury Tent - Shell



产品参数

Product Parameters

主体框架 Main Frame	60 x 80mm 烤漆镀锌钢管 60×80mm Hot Galvanized Steel Pipe
外帐材质 Outer Cover	1050g/m ² PVDF 张拉膜建筑膜材 1050g/sqm PVDF Architectural Membrane Fabric
立面墙体 Facade/Solid wall	88系列断桥铝双层中空玻璃 Broken bridge aluminum double insulating glass
抗风级别 Wind Resistance	10~12级 80~100km/h

产品规格

Product Specifications

尺寸 Dimension	投影面积 Floor Area	室内面积 Inner Dimension	容纳人数 Capacity (Guests)
6.5x 8 m	76m ²	40m ²	2



26

秋蝉帐篷 QC45

Luxury Tent - Cocoon



产品参数

Product Parameters

主体框架 Main Frame	60 x 80mm 烤漆镀锌钢管 60×80mm Hot Galvanized Steel Pipe
外帐材质 Outer Cover	1050g/m ² PVDF 张拉膜建筑膜材 1050g/sqm PVDF Architectural Membrane Fabric
立面墙体 Facade/Solid wall	88系列断桥铝双层中空玻璃 Broken bridge aluminum double insulating glass
抗风级别 Wind Resistance	10~12级 80~100km/h

产品规格

Product Specifications

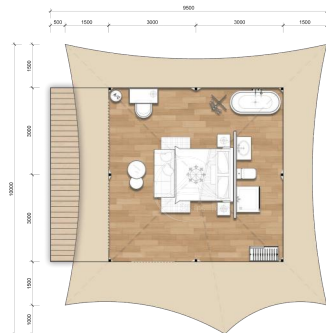
尺寸 Dimension	投影面积 Floor Area	室内面积 Inner Dimension	容纳人数 Capacity (Guests)
5.9x 11.5 m	76m ²	45m ²	2



27

姑苏帐篷 GS36

Luxury Tent - Square



卧室



空调



休闲区



卫浴间

产品参数

Product Parameters

主体框架 Main Frame	80×80×3mm 烤漆镀锌钢管 80×80×3mm Hot Galvanized Steel Pipe
外帐材质 Outer Cover	1050g/m ² PVDF张拉膜建筑膜材 1050g/sqm PVDF Architectural Membrane Fabric
立面墙体 Facade/Solid wall	88系列断桥铝双层中空玻璃/复合水泥泡沫保温墙板 Broken bridge aluminum double insulating glass/Composite cement foam insulation board
抗风级别 Wind Resistance	10~12级 80~100km/h

产品规格

Product Specifications

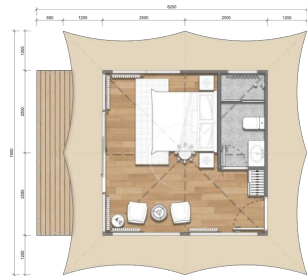
尺寸 Dimension	投影面积 Floor Area	室内面积 Inner Dimension	容纳人数 Capacity (Guests)
6 x 8m	95m ²	36m ²	2



28

广陵帐篷 GL25

Luxury Tent - Mercury



卧室



空调



休闲区



卫浴间

产品参数

Product Parameters

主体框架 Main Frame	80×80×3mm 烤漆镀锌钢管 80×80×3mm Hot Galvanized Steel Pipe
外帐材质 Outer Cover	1050g/m ² PVDF张拉膜建筑膜材 1050g/sqm PVDF Architectural Membrane Fabric
立面墙体 Facade/Solid wall	88系列断桥铝双层中空玻璃/复合水泥泡沫保温墙板 Broken bridge aluminum double insulating glass/Composite cement foam insulation board
抗风级别 Wind Resistance	10~12级 80~100km/h

产品规格

Product Specifications

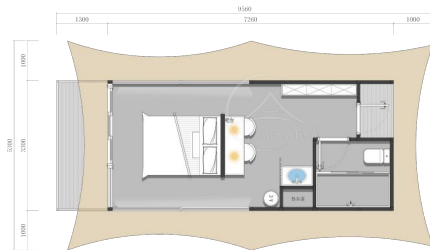
尺寸 Dimension	投影面积 Floor Area	室内面积 Inner Dimension	容纳人数 Capacity (Guests)
5x 5m	61m ²	25m ²	2



29

阿勒泰帐篷 ALT24

Luxury Tent - Villa



卧室



空调



休闲区



卫浴间

产品参数

Product Parameters

主体框架 Main Frame	90×90×3mm 烤漆镀锌钢管 80×80×3mm Hot Galvanized Steel Pipe
外帐材质 Outer Cover	1050g/m ² PVDF张拉膜建筑膜材 1050g/sqm PVDF Architectural Membrane Fabric
立面墙体 Facade/Solid wall	88系列断桥铝双层中空玻璃/复合水泥泡沫保温墙板 Broken bridge aluminum double insulating glass/Composite cement foam insulation board
抗风级别 Wind Resistance	10~12级 80~100km/h

产品规格

Product Specifications

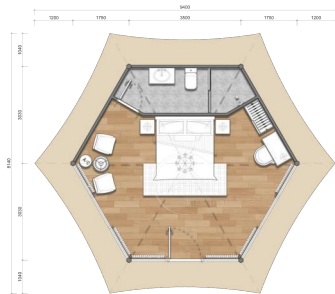
尺寸 Dimension	投影面积 Floor Area	室内面积 Inner Dimension	容纳人数 Capacity (Guests)
3.3 x 8.5 m	50 m ²	24 m ²	2



30

朝歌帐篷 ZG32

Luxury Tent - Hexagon



卧室



空调



休闲区



卫浴间

产品参数

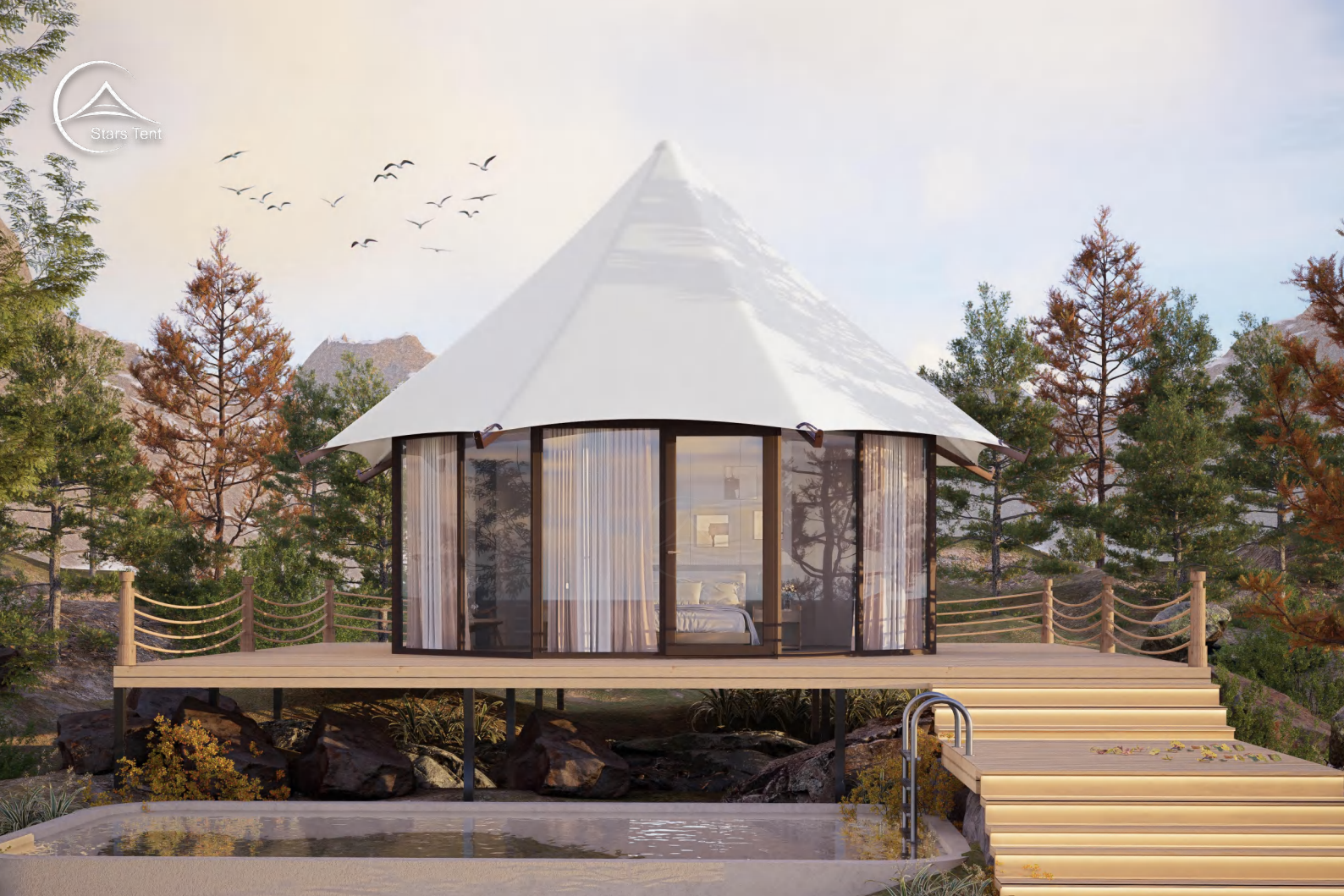
Product Parameters

主体框架 Main Frame	80×80×3mm 烤漆镀锌钢管 80×80×3mm Hot Galvanized Steel Pipe
外帐材质 Outer Cover	1050g/m ² PVDF张拉膜建筑膜材 1050g/sqm PVDF Architectural Membrane Fabric
立面墙体 Facade/Solid wall	88系列断桥铝双层中空玻璃/复合水泥泡沫保温墙板 Broken bridge aluminum double insulating glass/Composite cement foam insulation board
抗风级别 Wind Resistance	10~12级 80~100km/h

产品规格

Product Specifications

尺寸 Dimension	投影面积 Floor Area	室内面积 Inner Dimension	容纳人数 Capacity (Guests)
6 × 7m	76m ²	32m ²	2



31

昭苏帐篷 ZS30

Luxury Tent - Octagon



卧室



空调



休闲区



卫浴间

产品参数

Product Parameters

主体框架 Main Frame	80×80×3mm 烤漆镀锌钢管 80×80×3mm Hot Galvanized Steel Pipe
外帐材质 Outer Cover	1050g/m ² PVDF张拉膜建筑膜材 1050g/sqm PVDF Architectural Membrane Fabric
立面墙体 Facade/Solid wall	88系列断桥铝双层中空玻璃/复合水泥泡沫保温墙板 Broken bridge aluminum double insulating glass/Composite cement foam insulation board
抗风级别 Wind Resistance	10~12级 80~100km/h

产品规格

Product Specifications

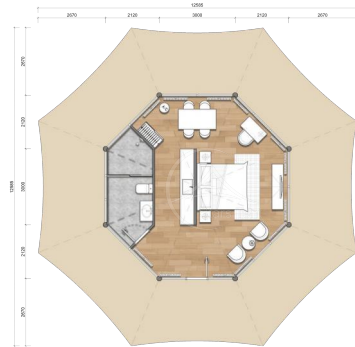
尺寸 Dimension	投影面积 Floor Area	室内面积 Inner Dimension	容纳人数 Capacity (Guests)
6 × 6m	60m ²	30m ²	2



32

苍溪帐篷 CX43

Luxury Tent - Scorpio



卧室



空调



休闲区



卫浴间

产品参数

Product Parameters

主体框架 Main Frame	80×80×3mm 烤漆镀锌钢管 80×80×3mm Hot Galvanized Steel Pipe
外帐材质 Outer Cover	1050g/m ² PVDF张拉膜建筑膜材 1050g/sqm PVDF Architectural Membrane Fabric
立面墙体 Facade/Solid wall	88系列断桥铝双层中空玻璃/复合水泥泡沫保温墙板 Broken bridge aluminum double insulating glass/Composite cement foam insulation board
抗风级别 Wind Resistance	10~12级 80~100km/h

产品规格

Product Specifications

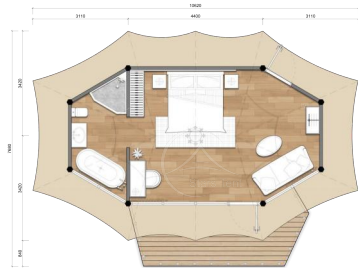
尺寸 Dimension	投影面积 Floor Area	室内面积 Inner Dimension	容纳人数 Capacity (Guests)
7.2 × 7.2m	158m ²	43m ²	2



33

琅琊帐篷 LY33

Luxury Tent - Uranus



卧室



空调



休闲区



卫浴间

产品参数

Product Parameters

主体框架 Main Frame	80×80×3mm 烤漆镀锌钢管 80×80×3mm Hot Galvanized Steel Pipe
外帐材质 Outer Cover	1050g/m ² PVDF张拉膜建筑膜材 1050g/sqm PVDF Architectural Membrane Fabric
立面墙体 Facade/Solid wall	88系列断桥铝双层中空玻璃/复合水泥泡沫保温墙板 Broken bridge aluminum double insulating glass/Composite cement foam insulation board
抗风级别 Wind Resistance	10~12级 80~100km/h

产品规格

Product Specifications

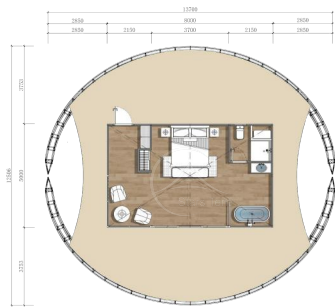
尺寸 Dimension	投影面积 Floor Area	室内面积 Inner Dimension	容纳人数 Capacity (Guests)
4.5 x 8.5m	82m ²	33m ²	2



34

肯尼亚帐篷 KNY40

Luxury Tent - Tethys



卧室



空调



休闲区



卫浴间

产品参数

Product Parameters

主体框架 Main Frame	360×360mm 高强钢桁架结构 360×360 mm Hot Galvanized Steel Pipe
外帐材质 Outer Cover	1050g/m ² PVDF张拉膜建筑膜材 1050g/sqm PVDF Architectural Membrane Fabric
立面墙体 Facade/Solid wall	断桥铝三层中空玻璃/复合水泥泡沫保温墙板 Broken bridge aluminum three insulating glass/Composite cement foam insulation board
抗风级别 Wind Resistance	10~12级 80~100km/h

产品规格

Product Specifications

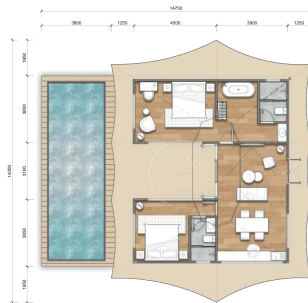
尺寸 Dimension	投影面积 Floor Area	室内面积 Inner Dimension	容纳人数 Capacity (Guests)
5 x 8 m	160m ²	40m ²	2



35

楼兰帐篷 LL72

Luxury Tent -Saturn



卧室



空调



休闲区



卫浴间

产品参数

Product Parameters

主体框架 Main Frame	100×100×4mm 烤漆镀锌钢管 100×100×4mm Hot Galvanized Steel Pipe
外帐材质 Outer Cover	1050g/m ² PVDF张拉膜建筑膜材 1050g/sqm PVDF Architectural Membrane Fabric
立面墙体 Facade/Solid wall	88系列断桥铝双层中空玻璃/复合水泥泡沫保温墙板 Broken bridge aluminum double insulating glass/Composite cement foam insulation board
抗风级别 Wind Resistance	10~12级 80~100km/h

产品规格

Product Specifications

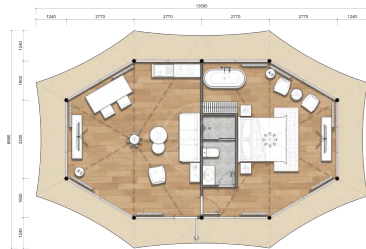
尺寸 Dimension	投影面积 Floor Area	室内面积 Inner Dimension	容纳人数 Capacity (Guests)
8.5 x 10.5m	156m ²	72m ²	2 - 4



36

天水帐篷 TS62

Luxury Tent - Gemini



卧室



空调



休闲区



卫浴间

产品参数

Product Parameters

主体框架 Main Frame	80×80×3mm 烤漆镀锌钢管 80×80×3mm Hot Galvanized Steel Pipe
外帐材质 Outer Cover	1050g/㎡PVDF张拉膜建筑膜材 1050g/sqm PVDF Architectural Membrane Fabric
立面墙体 Facade/Solid wall	88系列断桥铝双层中空玻璃/复合水泥泡沫保温墙板 Broken bridge aluminum double insulating glass/Composite cement foam insulation board
抗风级别 Wind Resistance	10~12级 80~100km/h

产品规格

Product Specifications

尺寸 Dimension	投影面积 Floor Area	室内面积 Inner Dimension	容纳人数 Capacity (Guests)
6.5 x 11m	120㎡	62㎡	2



37

华阳帐篷 HY83

Luxury Tent - Capricor



卧室



空调



休闲区



卫浴间

产品参数

Product Parameters

主体框架 Main Frame	100×100×4mm 烤漆镀锌钢管 100×100×4mm Hot Galvanized Steel Pipe
外帐材质 Outer Cover	1050g/㎡PVDF张拉膜建筑膜材 1050g/sqm PVDF Architectural Membrane Fabric
立面墙体 Facade/Solid wall	88系列断桥铝双层中空玻璃/复合水泥泡沫保温墙板 Broken bridge aluminum double insulating glass/Composite cement foam insulation board
抗风级别 Wind Resistance	10~12级 80~100km/h

产品规格

Product Specifications

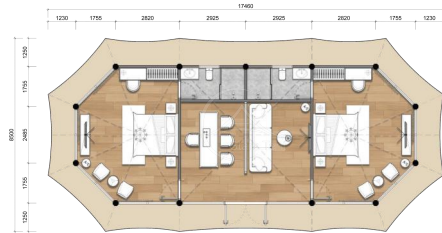
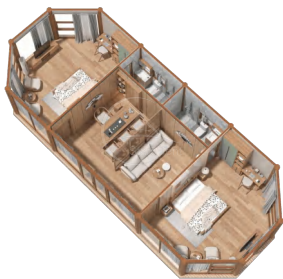
尺寸 Dimension	投影面积 Floor Area	室内面积 Inner Dimension	容纳人数 Capacity (Guests)
6 x 16m	254㎡	83㎡	2 - 4



38

临夏帐篷 LX86

Luxury Tent - Patron



卧室



空调



休闲区



卫浴间

产品参数

Product Parameters

主体框架 Main Frame	100×100×4mm 烤漆镀锌钢管 100×100×4mm Hot Galvanized Steel Pipe
外帐材质 Outer Cover	1050g/m ² PVDF张拉膜建筑膜材 1050g/sqm PVDF Architectural Membrane Fabric
立面墙体 Facade/Solid wall	88系列断桥铝双层中空玻璃/复合水泥泡沫保温墙板 Broken bridge aluminum double insulating glass/Composite cement foam insulation board
抗风级别 Wind Resistance	10~12级 80~100km/h

产品规格

Product Specifications

尺寸 Dimension	投影面积 Floor Area	室内面积 Inner Dimension	容纳人数 Capacity (Guests)
6 x 15m	149m ²	86m ²	2 - 4



39

云中帐篷 YZ68

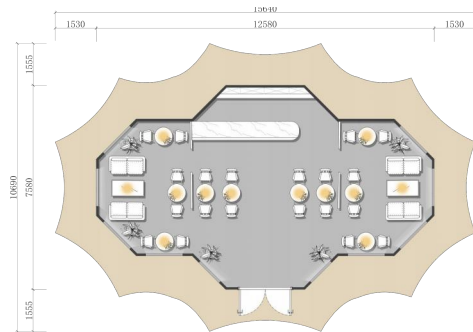
Luxury Tent - Cloud



产品参数

Product Parameters

主体框架 Main Frame	80×80×3 mm 烤漆镀锌钢管 100×100×4mm Hot Galvanized Steel Pipe
外帐材质 Outer Cover	1050g/㎡PVDF张拉膜建筑膜材 1050g/sqm PVDF Architectural Membrane Fabric
立面墙体 Facade/Solid wall	88系列断桥铝双层中空玻璃/复合水泥泡沫保温墙板 Broken bridge aluminum double insulating glass/Composite cement foam insulation board
抗风级别 Wind Resistance	10~12级 80~100km/h



产品规格

Product Specifications

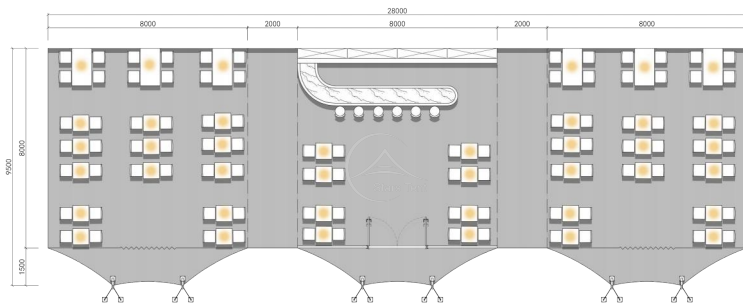
尺寸 Dimension	投影面积 Floor Area	室内面积 Inner Dimension	容纳人数 Capacity (Guests)
7.5 x 12.5m	122 m ²	68 m ²	28



40

金字塔帐篷 JZT225

Safari Tent - Pyramid



产品参数

Product Parameters

主体框架 Main Frame	100×80×3mm 烤漆镀锌钢管 100×80×3mm Hot Galvanized Steel Pipe
篷布材质 Outer Cover	1050g/㎡PVDF张拉膜建筑膜材 1050g/sqm PVDF Architectural Membrane Fabric
抗风级别 Wind Resistance	10级 80km/h

产品规格

Product Specifications

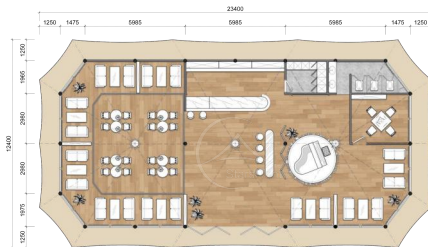
尺寸 Dimension	投影面积 Floor Area	室内面积 Inner Dimension	容纳人数 Capacity (Guests)
8 x 28m	238 m ²	225 m ²	100



41

洛阳帐篷 LY200

Luxury Tent - Libra



卧室



空调



休闲区



卫浴间

产品参数

Product Parameters

主体框架 Main Frame	120×120×4mm 烤漆镀锌钢管 120×120×4mm Hot Galvanized Steel Pipe
外帐材质 Outer Cover	1050g/m ² PVDF张拉膜建筑膜材 1050g/sqm PVDF Architectural Membrane Fabric
立面墙体 Facade/Solid wall	88系列断桥铝双层中空玻璃/复合水泥泡沫保温墙板 Broken bridge aluminum double insulating glass/Composite cement foam insulation board
抗风级别 Wind Resistance	10~12级 80~100km/h

产品规格

Product Specifications

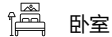
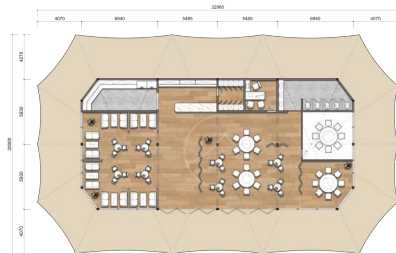
尺寸 Dimension	投影面积 Floor Area	室内面积 Inner Dimension	容纳人数 Capacity (Guests)
10 x 21m	290m ²	200m ²	80



42

扶风帐篷 FF300

Luxury Tent-Reception



卧室



空调



休闲区



卫浴间

产品参数

Product Parameters

主体框架 Main Frame	120×120×4mm 烤漆镀锌钢管 120×120×4mm Hot Galvanized Steel Pipe
外帐材质 Outer Cover	1050g/m ² PVDF张拉膜建筑膜材 1050g/sqm PVDF Architectural Membrane Fabric
立面墙体 Facade/Solid wall	88系列断桥铝双层中空玻璃/复合水泥泡沫保温墙板 Broken bridge aluminum double insulating glass/Composite cement foam insulation board
抗风级别 Wind Resistance	10~12级 80~100km/h

产品规格

Product Specifications

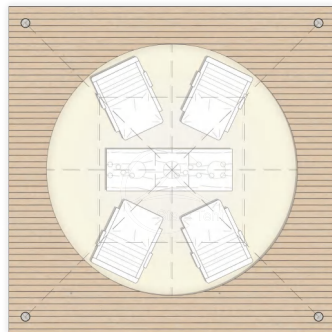
尺寸 Dimension	投影面积 Floor Area	室内面积 Inner Dimension	容纳人数 Capacity (Guests)
12 x 25m	659m ²	300m ²	120



43

灯笼帐篷 DL12

Safari Tent- Lantern



产品参数

Product Parameters

主体框架 Main Frame	φ80mm 进口芬兰松实木 φ100mm Plywood Wooden Pole Frame
外帐材质 Outer Cover	650g/m ² PVC张拉膜 (自洁防霉) 950g/sqm PVC Architectural Membrane Fabric
抗风级别 Wind Resistance	8级 80km/h

产品规格

Product Specifications

尺寸 Dimension	投影面积 Floor Area	顶高 Top Height	容纳人数 Capacity (Guests)
3.5x3.5m	12.25m ²	5.5m	2 - 4
4x4m	16m ²	5.5m	4 - 6
5 x 5m	25m ²	6.5m	6 - 9



Coffee Shop

Coffee	Price	Espresso
Espresso	\$2.50	\$2.50
Espresso	\$2.50	\$2.50
Espresso	\$2.50	\$2.50
Espresso	\$2.50	\$2.50
Espresso	\$2.50	\$2.50
Espresso	\$2.50	\$2.50
Espresso	\$2.50	\$2.50
Espresso	\$2.50	\$2.50
Espresso	\$2.50	\$2.50
Espresso	\$2.50	\$2.50

Espresso

Espresso

Espresso

Espresso

Espresso

Espresso

Espresso

Espresso

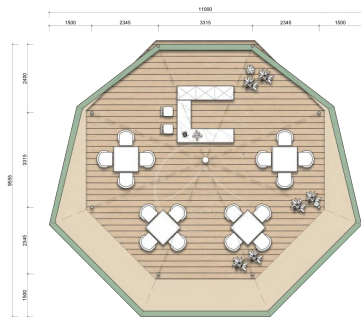
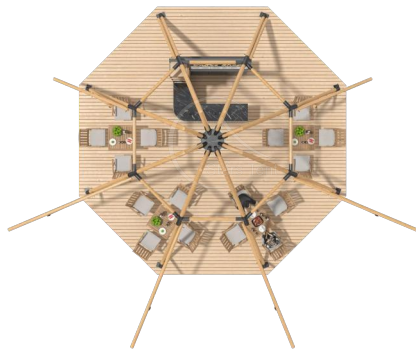
Espresso

Espresso

44

TiPi帐篷 TP72

Safari Tent - TiPi



产品参数

Product Parameters

主体框架 Main Frame Structure	进口芬兰松防腐实木 Plywood Wooden Pole Frame
外帐材质 Inner Cover	1680D高密防霉牛津布 1680D Oxford Canvas Fabric
用途场景 Internal Account Materials	餐厅、接待、派对、户外活动 Restaurant, Reception, Party, Outdoor Event
抗风级别 Wind Resistance	8级 80km/h

产品规格

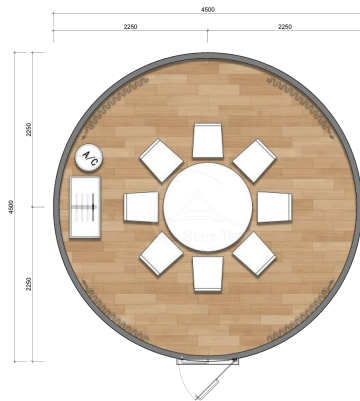
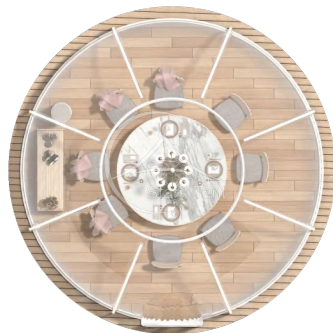
Product Specifications

占地尺寸 Dimension	展开尺寸 Unfolded	投影面积 Projected Area	主体框架参数 Main Frame	容纳人数 (仅供参考) Capacity (Guests)
6m	9m	64m ²	φ80mm	20
7m	10m	79m ²	φ80mm	30
8m	11m	95m ²	φ100mm	40
9m	12m	113m ²	φ100mm	50
10m	13m	133m ²	φ100mm	70
11m	14m	154m ²	φ100mm	90
12m	15m	177m ²	φ100mm	110
13m	16m	201m ²	φ100mm	120



45

PC帐篷 PC23 Polycarbonate Dome



产品参数

Product Parameters

主体框架 Main Frame	6063航空铝合金框架 6063 Aviation Aluminum Frame
外帐材料 Outer Cover	透明的聚碳酸酯外壳 Transparent Polycarbonate Shell (PMMA)
门框材料 Entry Door	铝合金聚碳酸酯门 Polycarbonate Door
抗风等级 Wind Resistance	8级 80km/h

产品规格

Product Specifications

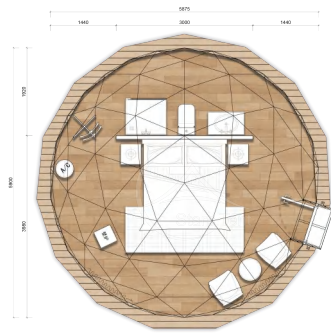
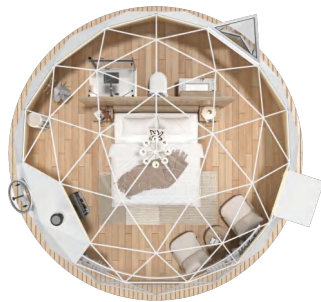
直径 (Diameter)	占地面积 (Floor Area)	容纳人数 (Capacity (Guests))
2.7m	5.1m ²	5 - 6
3.25m	8.3m ²	6 - 7
3.5m	9.6m ²	6 - 8
3.8m	11.3m ²	8 - 10
4.0m	12.56m ²	10 - 12
4.4m	15.19m ²	12 - 14
5.1m	20.8m ²	15 - 17
6.0m	28.3m ²	18 - 20



46

星空帐篷 XK28

Glamping Dome



卧室



空调



休闲区



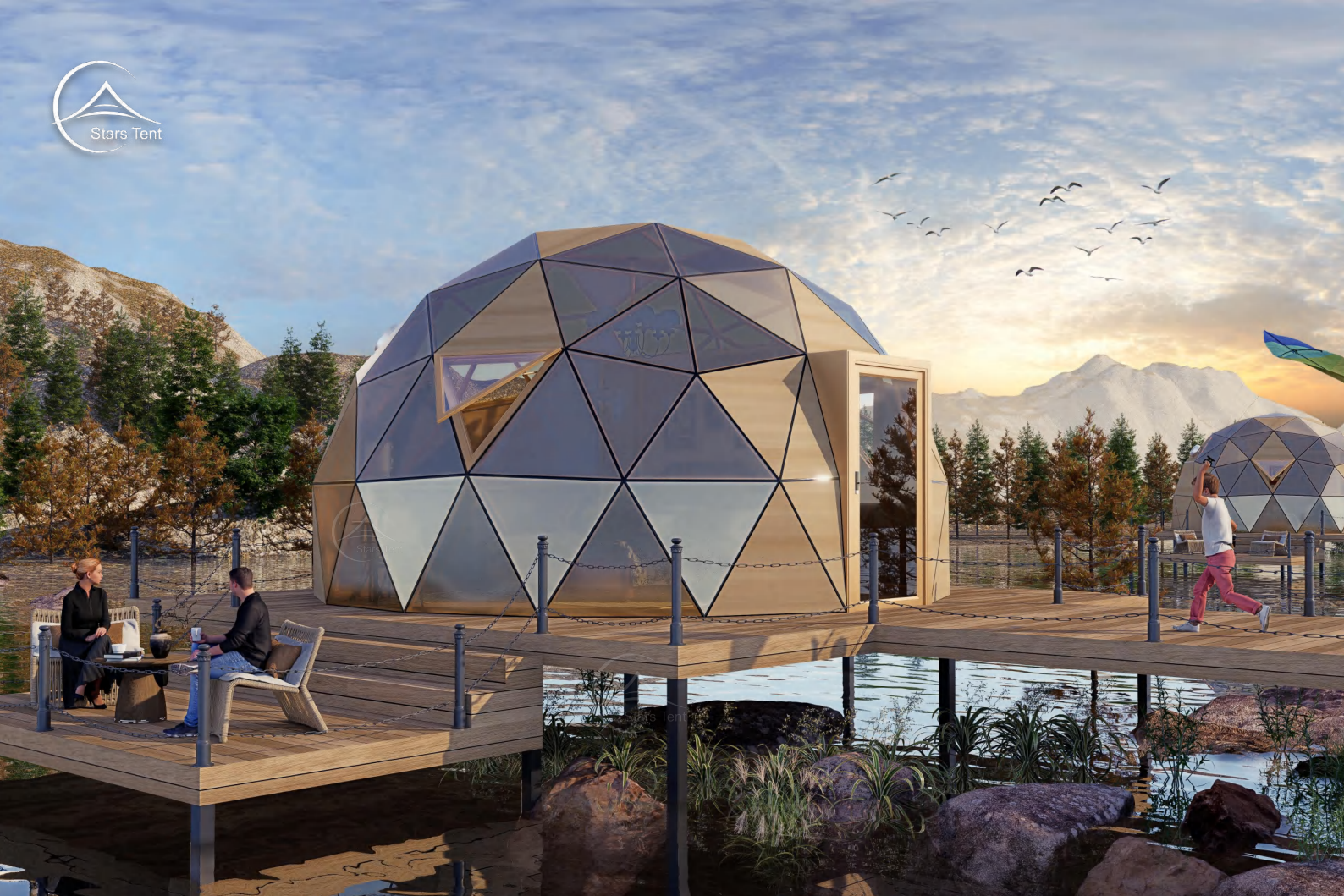
卫浴间

产品参数

Product Parameters

主体框架 Main Frame	白色烤漆Q235 热镀锌钢管 Q235 Hot-dip Galvanized Steel Struts (White Baking Paint)
外帐材料 Outer Cover	850g/m ² PVC双面刀刮涂层布 850g/sqm PVC Coated Polyester Fabric
内衬材料 Lining Material	140g绗棉保温内衬 140g Quilted Cotton Insulation Lining
抗风等级 Wind Resistance	10级 80-100km/h

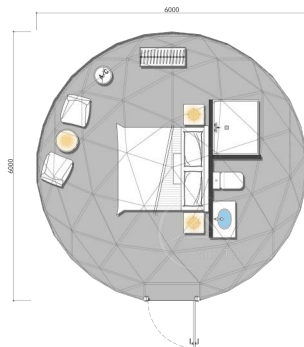
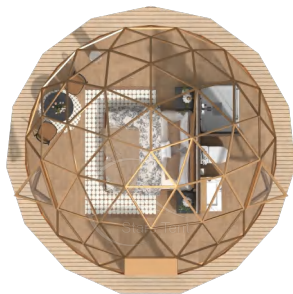
直径 (Diameter)	顶高 (Top Height)	管件尺寸 (Size of Steel Struts)	最长管件尺寸 (Longest of Steel Struts)
5m	3.0m	φ26*1.5mm	1.2m
6m	3.4m	φ26*1.5mm	1.5m
7m	4.0m	φ26*1.5mm	2.0m
8m	4.5m	φ32*2mm	2.0m
9m	5.0m	φ32*2mm	2.2m
10m	5.5m	φ32*2mm	2.2m



47

玻璃帐篷 BL28

Glass Dome



卧室



空调



休闲区



卫浴间

产品参数

Product Parameters

主体框架 Main Frame	铝合金框架 Aluminum Alloy Framework
门框材料 Entry Door	铝合金磨砂玻璃门 Frosted Aluminum Glass Door
外帐材料 Outer Cover	5mm玻璃/5+9+5mm断桥铝中空玻璃 Thickness 5mm Tempered Glass / 5+9+5mm Tempered Insulating Glass
抗风等级 Wind Resistance	10级 80-100km/h

直径 (Diameter)	顶高 (Top Height)	室内面积 (Inner Dimension)
4m	3.0m	12.5m ²
5m	3.2m	19.6m ²
6m	3.5m	28.3m ²
7m	4.1m	38.5m ²
8m	4.5m	50.2m ²
10m	5.5m	78.5m ²

联系我们 CONTACT US

Yuntu Tent & Stars Glamping

广州云途篷房技术有限公司
广东星途建筑科技有限公司

电话/微信: 13318752061

邮箱: 863699427@qq.com

Email: info@stars-glamping.com

地址: 广州市南沙区东涌镇南沙大道1663号A栋

Address: Address: Building A, No. 1663, Nansha Avenue, Nansha District, Guangzhou, China

星途官网: www.stars-tent.com (中文) | www.stars-glamping.com (英文)

云途官网: www.yuntu-glamping.com (中文) | www.yuntutent.com (英文)

Stars Tent

