



Official Website



Wechat Service

Social Media



YouTube



Instagram



TikTok



Facebook



X

CHENGLAI

Valve Electric Actuators and Accessories



CHENGLAI

Changzhou Chenglei Valve Technology Co., Ltd.
Add: Hengshanqiao Town, Changzhou Economic Development Zone.
Tel: 0519-88769153
Web: www.czcljmx.com
E-mail: czcljmx@163.com

2025 Version

Changzhou Chenglei Valve Technology Co., Ltd.

01 Intelligent Control Expert Of Valves

02 www.czcljmx.com

CHENGLEI

Philosophy

Excellence in quality, accountability in reputation, precision in management, integrity in service

Promise

Delivering quality, ensuring efficiency

Spirit

Quality defines us, innovation drives us



« INTRODUCTION »

Changzhou Chenglei Valve Technology Co., Ltd., a National High-Tech Enterprise, has specialized in electric actuator development and manufacturing for over two decades. Headquartered in Changzhou, Jiangsu Province—a core hub of central and eastern China's advanced manufacturing cluster—the company operates modernized processing centers and intelligent production lines integrating precision casting, CNC machining, automated assembly, and comprehensive quality inspection systems.

Key product lines encompass multi-turn and part-turn electric actuators, with vertically integrated production of core components. The R&D team led by senior engineers has secured multiple national patents and achieved international certifications including ISO 9001 Quality Management System, CE, SIL, and EAC.

Renowned for high-precision performance and operational reliability, the company's solutions serve critical industries such as petrochemicals, power generation, and environmental water treatment. Its products dominate domestic markets while exporting to Europe, Southeast Asia, and the Middle East, establishing itself as a global name card of Chinese intelligent manufacturing

Product Categories

Intelligent Electric Actuators



CLFZ multi-turn series

CLZ multi-turn series

CLBP multi-turn series



CLQ quarter turn series



CLFZ-DP multi-turn series

Basic Electric Actuators



CLZ multi-turn series

CLQ quarter turn series

CLMQ quarter turn series

4-20mA Control Unit

Accessories



Thrust Unit



Adapter Flange



Base Crank Handle



Split Control Unit



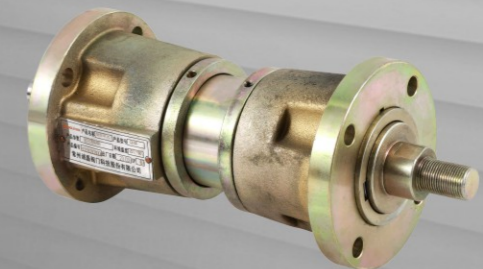
Worm Gear Box



Bevel Gear Box



Spur Gear Box



Linear Unit

Products Features

With intelligent technology as the core, our products support multi-terminal real-time monitoring and parameter adjustment; Built-in motor overheating, overload and phase failure multiple protection mechanism ensures stable operation and long service life of equipment under complex working conditions. The product also supports 4G/5G remote control and blue-tooth man-machine interaction, realizing cross-regional real-time monitoring and intelligent control; The split installation design is suitable for the needs of complex industrial scenes, and can provide modular function customization services to meet the personalized configuration and efficient operation and maintenance requirements of customers.

Product Selection Table

	Standard	Basic	Intelligent
Control Mode	ON/OFF	●	●
	Modulating	-	●
IP Level	IP67	●	●
Feedback Signal	On/off limit switch; On/off Over torque switch; Position feedback potentiometer	●	●
Control Signal	Switch control	●	●
	Analog control	-	●
Protection Function	Over torque protection	●	●
	Motor overheat protection	●	●
	Signal loss protection	-	●
	Instantaneous reversal protection	-	●
	Phase loss protection (three-phase only)	-	●
	Automatic phase sequence correction	-	●
	Non intrusive protection	-	●
	Data recording	-	●
	Password protection	-	●
	Heater	●	●
HMI	Field control (on/off/off button, local/remote/disable knob)	-	●
	Infrared remote control operation	-	●
Status Indicator	Pointer opening indicator	●	○
	On/off/remote control/fault signal indicator	-	●
	LCD digital display opening percentage	-	●
	LCD torque display percentage	-	●
Position Detection	Counting gear set	●	-
	Position encoder	-	●
Others	Travel limit non-intrusive setting	-	●
Others	Dead zone setting; Signal reverse setting; Default mode setting, optional (0%, 100%, hold); Feedback contact function setting, ESD setting, optional (0%, 100%, hold); Power-off display function	-	○

Note: "●" means Yes, "○" means Optional, "-" means None.

	Optional	Basic	Intelligent
Installation Mode	Split type installation	-	○
Working Temperature	-60°C+70°C	○	○
IP Level	IP68	○	○
Wiring Mode	Plug-in terminal	○	○
Manual Mode	Automatic switching	○	○
Control Signal	Modbus, Profibus, HART, Device Net	-	○
	4G/5G	-	○
HMI	Blue tooth	-	○
Feedback Signal	Electronic torque	-	○

Note: "○" means Optional, "-" means None.

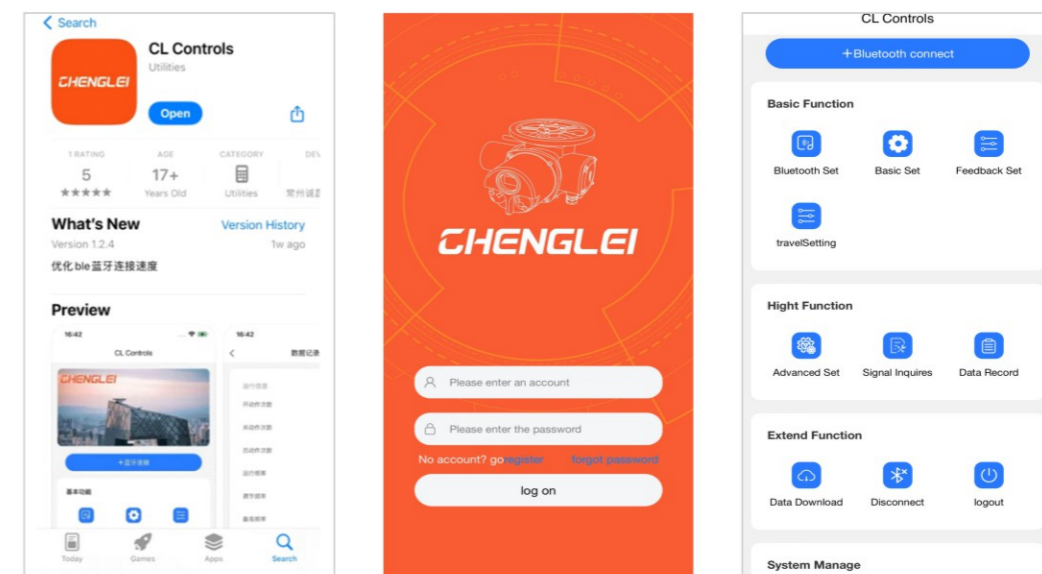
Bus Control

Our actuators support Modbus, Profibus, HART and other industrial bus protocols and adapt to the intelligent control requirements of petrochemical, power and energy scenes.



Blue Tooth Control

Download the blue tooth control App developed by the company, and enable the electric actuator to conduct wireless data exchange and communication with other blue tooth devices (such as smartphone, tablet, etc.) through the built-in blue tooth module. This function allows the user to remotely monitor and control the working state of the electric actuator, improving the convenience and flexibility of operation.



Service Network

The company has always been committed to providing customers with full-life cycle service solutions. On the basis of guaranteeing efficient and reliable after-sales services, it also relies on professional teams and technical strength to create a diversified service system covering product upgrading, system transformation and customized technical support. We provide 24-hour fast response equipment maintenance and troubleshooting. At the same time, the company has a professional technical consulting team, which can customize a special adaptation scheme according to the customer's needs. Through function expansion, compatibility transformation and system integration services, it helps old and old equipment revive, effectively prolongs the service life of equipment and reduces the comprehensive operating cost.g. From product delivery to technology iteration, we enable customers to always obtain efficient and intelligent solutions through continuous innovation and full-process services, so as to realize the dual improvement of production efficiency and market competitiveness.



Whole Process Inspection Equipment

The company is equipped with low temperature test equipment (-60°C environment verification), corrosion protection test system, torque test bench and voltage commissioning system, forming the whole process detection capability covering environmental adaptability, mechanical strength and electrical performance.



Industrial application

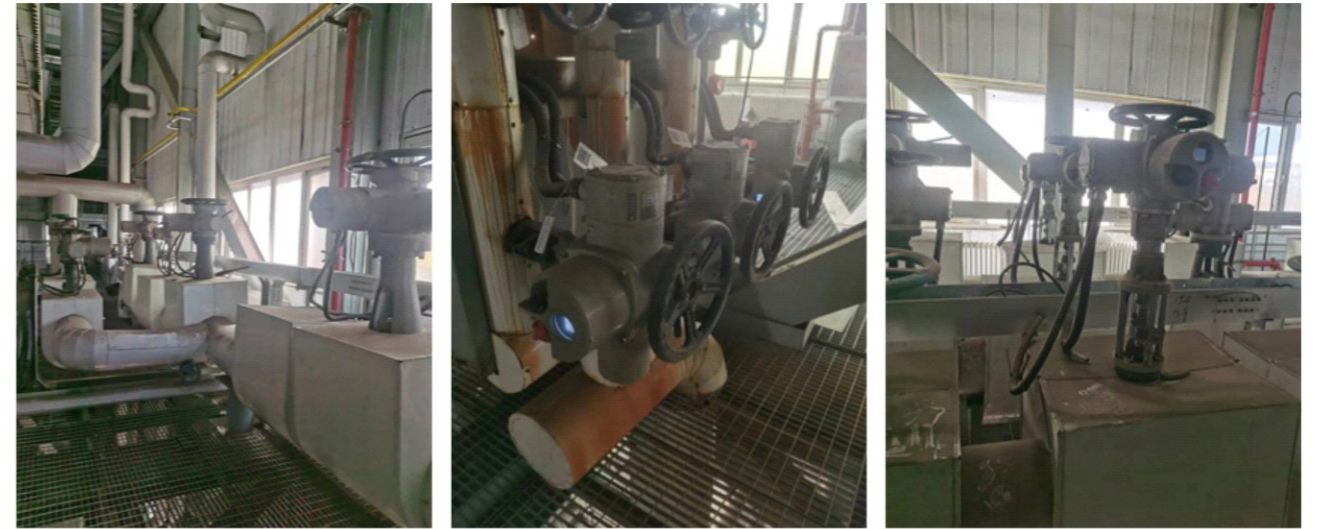
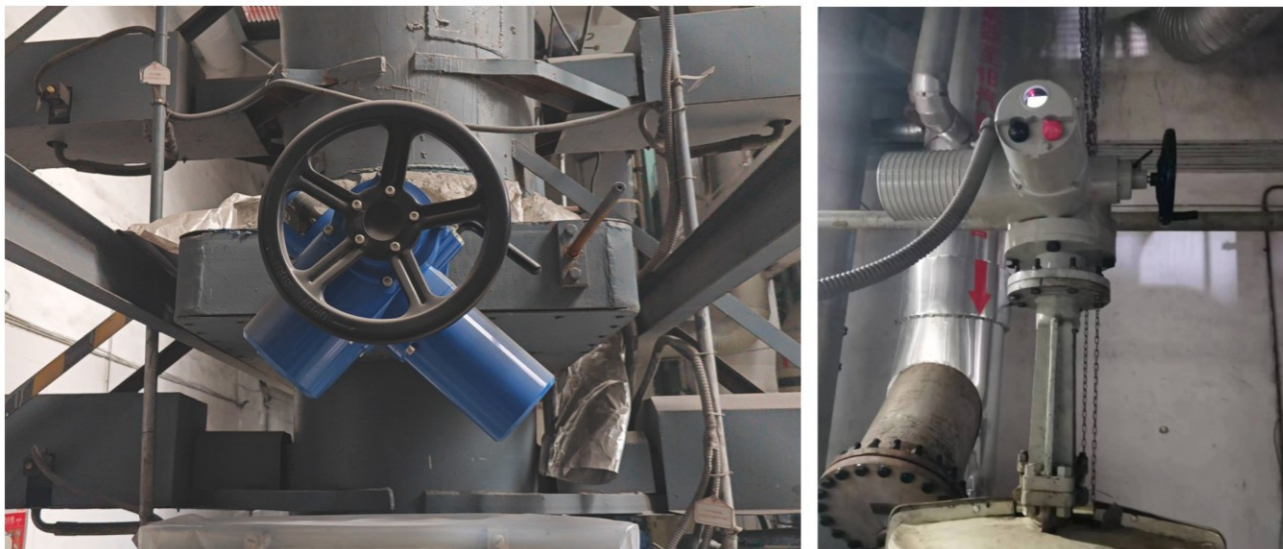
With precise control and high reliability, Chenglei electric actuator products are widely used in power system valve regulation, petrochemical unit process control, water treatment pipe network automation and intelligent control of metallurgical equipment and other fields. The product adopts modular design, which is suitable for severe working conditions, with explosion-proof, anti-corrosion and other characteristics, effectively improving the automation level and operation safety of industrial processes, and providing core driving solutions for key industries such as energy and manufacturing.

Water Industry



Power Plant





Metallurgical Industry





Petrochemical Industry

