



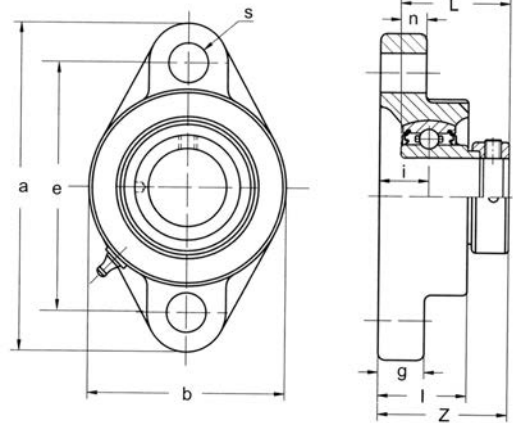
# BEARING UNITS



## TWO BOLT FLANGE UNITS

### SAFT 200 Series

Normal Duty  
Eccentric Collar Locking  
Housings Marked FLU



Unit No.	Shaft Dia.		Dimensions inch / mm										Bolt Size	Bearing No.	Housing No.	Weight Lbs kg
	In.	mm	a	e	i	g	l	s	b	z	L	n				
SAFT 204 204-12	3/4	20	4-7/16 112.7	3-35/64 90.5	3/4 19.1	19/32 15.1	1-11/64 29.8	29/64 11.5	2-13/32 61.1	1-45/64 43.3	1.220 31.0	0.276 7.0	5/16 M8	SA 204 204-12	FT204	0.95 0.43
SAFT 205 205-14 205-15 205-16	7/8 15/16 1	25	4-29/32 124.6	3-57/64 98.8	3/4 19.1	19/32 15.1	1-3/16 30.2	29/64 11.5	2-3/4 69.9	1-45/64 43.3	1.220 31.0	0.295 7.5	3/8 M10	SA 205 205-14 205-15 205-16	FT205	1.17 0.53
SAFT 206 206-17 206-18 206-19 206-20	1-1/16 1-1/8 1-3/16 1-1/4S	30	5-19/32 142.1	4-19/32 116.7	25/32 19.8	5/8 15.9	1-9/32 32.5	29/64 11.5	3-3/16 81.0	1-7/8 47.6	1.406 35.7	0.315 8.0	3/8 M10	SA 206 206-17 206-18 206-19 206-20	FT206	1.85 0.84
SAFT 207 207-20 207-21 207-22 207-23	1-1/4 1-5/16 1-3/8 1-7/16	35	6-3/16 157.2	5-1/8 130.2	13/16 20.6	21/32 16.7	1-13/32 35.7	9/16 14.3	3-11/16 93.7	2-1/64 51.2	1.531 38.9	0.335 8.5	7/16 M12	SA 207 207-20 207-21 207-22 207-23	FT207	2.77 1.26
SAFT 208 208-24 208-25	1-1/2 1-9/16	40	6-25/32 172.2	5-41/64 143.3	15/16 23.8	21/32 16.7	1-17/32 38.9	9/16 14.3	4-5/64 103.6	2-5/16 58.7	1.720 43.7	0.354 9.0	7/16 M12	SA 208 208-24 208-25	FT208	3.48 1.58
SAFT 209 209-26 209-27 209-28	1-5/8 1-11/16 1-3/4	45	7-3/32 180.2	5-27/32 148.4	15/16 23.8	23/32 18.3	1-9/16 39.7	5/8 15.9	4-1/4 108.0	2-21/64 59.1	1.720 43.7	0.374 9.5	7/16 M12	SA 209 209-26 209-27 209-28	FT209	4.4 2.00
SAFT 210 210-30 210-31 210-32	1-7/8 1-15/16 2S	50	7-15/32 189.7	6-3/16 157.2	1-3/32 27.8	25/32 19.8	1-25/32 45.2	23/32 18.3	4-1/2 114.3	2-27/64 61.5	1.720 43.7	0.394 10	1/2 M14	SA 210 210-30 210-31 210-32	FT210	4.95 2.25