



BEARING UNITS

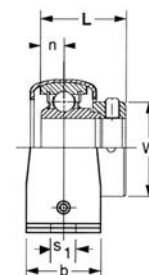
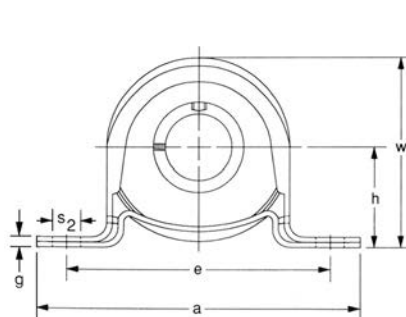


PILLOW BLOCKS - Pressed Steel

SAPP 200 Series

Normal Duty

Eccentric Collar Locking



| Unit No. | Shaft Dia. | | Dimensions inch / mm | | | | | | | | | | | Bolt Size | Bearing No. | Housing No. | Weight Lbs kg |
|--|-------------------------------------|----|----------------------|------------------|-----------------|-----------------|---------------|--------------|----------------|--------------|---------------|--------------|-----------------|------------|--|-------------|---------------------|
| | In. | mm | h | a | e | b | S1 | S2 | w | g | L | n | W | | | | |
| SAPP 201-8 202-10 | 1/2 5/8 | | 7/8 22.2 | 3-5/8 92.1 | 2-11/16 68.3 | 31/32 24.6 | 11/32 8.7 | 1/2 12.7 | 1-3/4 44.5 | 5/32 4.0 | 1.126 28.6 | 0.236 6.0 | 1-1/8 28.6 | 5/16 M8 | SA 201-8 202-10 | PP203ST | 0.44 0.20 |
| SAPP 204 204-12 | 3/4 | 20 | 1 25.4 | 4-1/8 104.8 | 2-63/64 75.8 | 31/32 24.6 | 13/32 10.3 | 1/2 12.7 | 2-3/32 53.2 | 5/32 4.0 | 1.220 31.0 | 0.276 7.0 | 1-1/4 31.8 | 5/16 M8 | SA 204 204-12 | PP204ST | 0.53 0.24 |
| SAPP 205 205-14 205-15 205-16 | 7/8 15/16 1 | 25 | 1-1/8 28.6 | 4-19/64 109.1 | 3-25/64 86.1 | 1-3/16 30.2 | 13/32 10.3 | 9/16 14.3 | 2-7/32 56.4 | 13/64 5.2 | 1.220 31.0 | 0.295 7.5 | 1-1/2 38.1 | 3/8 M10 | SA 205 205-14 205-15 205-16 | PP205ST | 0.73 0.33 |
| SAPP 206 206-17 206-18 206-19 206-20 | 1-1/16 1-1/8 1-3/16 1-1/4S | 30 | 1-5/16 33.3 | 4-7/8 123.8 | 3-3/4 95.3 | 1-1/4 31.8 | 13/32 10.3 | 9/16 14.3 | 2-5/8 66.7 | 15/64 6.0 | 1.406 35.7 | 0.315 8.0 | 1-3/4 44.5 | 3/8 M10 | SA 206 206-17 206-18 206-19 206-20 | PP206ST | 1.10 0.50 |
| SAPP 207 207-20 207-21 207-22 207-23 | 1-1/4 1-5/16 1-3/8 1-7/16 | 35 | 1-9/16 39.7 | 5-3/4 146.1 | 4-1/4 108.0 | 1-19/64 32.7 | 1/2 12.7 | 3/4 19.1 | 3-1/8 79.4 | 15/64 6.0 | 1.531 38.9 | 0.335 8.5 | 2-15/64 56.8 | 3/8 M10 | SA 207 207-20 207-21 207-22 207-23 | PP207ST | 1.65 0.75 |

Standard Stock Item is Snap Together Type and Zinc Plated.