



Sunshine Series

BMT-S2/024A (84W)

GoodWe Sunshine Series are solar tiles that accommodate a variety of roofing styles. The integrated tempered double-glass structure ensures the safety of the roof structure. Featuring improved roof ventilation and heat dissipation, as well as fast installation, the Sunshine tiles can not only improve the energy efficiency of a building, but also help households lower energy costs while reducing their overall carbon footprint.



Ultra Safety

- Class A fire rating¹
- Hurricane wind-resistance²
- Structural waterproofing³

¹Burning block test: 300×300×57mm 30min

Flames spread test: 10min < 1.82m

²Wind resistance test: Passed 50m/s

³Rain test: Passed 9.5L/min



Rapid Installation

- Non-penetrative installation
- Modular design, easy to replace



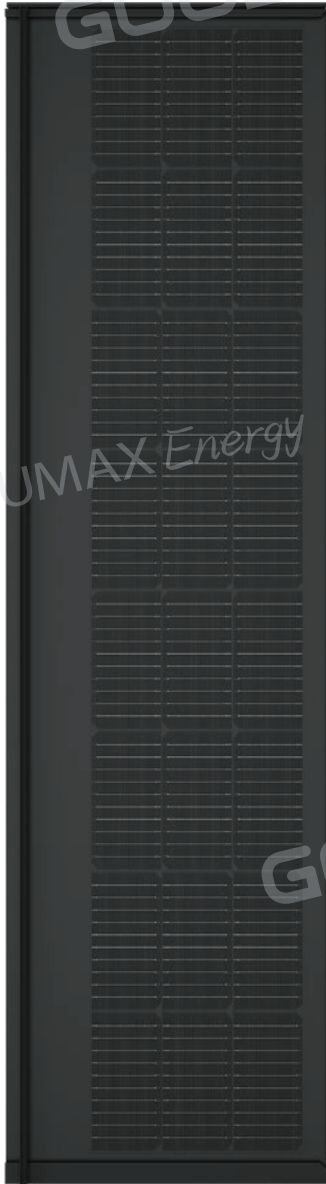
Durable

- Compliant with mandatory certification standards for building materials
- Resulting in same life cycle as buildings



Attractive Appearance

- Traditional tiles compatibility
- Self-cleaning and unobstructed drainage



Ebony

*Other colors can be customized

Structural Data

Size	1556x420x23.5mm
Color	Ebony
Weight	11.5kg
Area	0.654m ²
Cell Type	Mono PERC
Installation Method	Integrated Batten Hook
Waterproofing Method	Structural Waterproofing
Packaging	30pcs per pallet

Safety Data

Mechanical Loads	5400Pa
Fire Test Rating	Class A
Windproof Rating	Wind resistance up to 14 gusts
Hail Resistance Rating	4 (ANSI FM4473)
Dust Proof Rating	IP67

Electrical Data

Max Power (Pmax)	84W
Voltage at Max Power (Vmpp)	6.80V
Current at Max Power (Impp)	12.37A
Voltage at Open Circuit (Voc)	8.34V
Current at Short Circuit (Isc)	12.89A
Power	160-175W/m ²
Function Configuration	Adapted to rapid shutdown, SunSpec compliant/NEC2020-690.12 compliant

Carbon Neutral Index (30 Years)

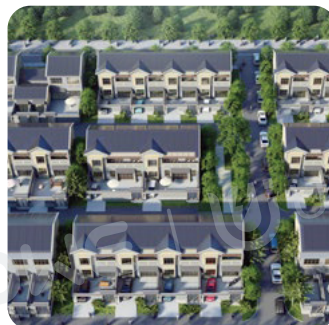
Energy Output	2500kWh
Equivalent to Standard Coal	750kg
Carbon Emission Reduction	1400kg



Villa



Hotel Building



Community Building



Public Building

UMAX ENERGY (Strategic Exclusive Partner and Technical & Service Centre)

📍 Unit L, 61-65 Roberts Rd, Greenacre NSW 2190

☎ 1300 950 868

✉ info@umaxenergy.com

🌐 www.umaxenergy.com.au