

## Horizontal Baler



Address: East Qunsheng Road Wuxi City, Jiangsu, China  
Tel: 86-29-86031588 Fax: 86-29-86031588  
Mob: +86 15021631102( WhatsApp)  
Web: [www.nkbaler.com](http://www.nkbaler.com)  
Email: [nk@nkbaler.com](mailto:nk@nkbaler.com) [nickbaler888@gmail.com](mailto:nickbaler888@gmail.com)





# Company Profile

Integrity-oriented Service-oriented

NickBaler Founded in 2006, is a professional service manufacturer specializing in the development, production, sales and service of hydraulic Baler machinery . With the goal of continuously adapting to the market and meeting customer needs, it continues to introduce international advanced & technology production. NickBaler committed to producing professional horizontal hydraulic baler products, and constantly pursuing perfection. With years of intensive cultivation and continuous development and growth, Our company has become a powerful and influential company in the machinery industry and waste recycling industry. We will continue to be pragmatic and enterprising, and develop more automation equipment more suitable for waste recycling companies for customers Solve more production problems.



# Certificate

Technology | Quality | Service



Integrity & Quality Assurance



All the products have obtained CE safety certificate



“TUV”certification

## Waste Paper Balers (NK6040T10/NK8060T15)

### Usage:

Specially designed for recycling waste cardboards, PP films, carton box, cartons and newspaper etc

### Features:

- Automatic chain bale ejector for quickly and easily ejecting the bales out from the machine.
- Bottom liquid receiver is optional for collecting the liquid from the compressing materials.
- The ram will stop running downwards when the feeding gate is opened which ensure the safety of the operation.
- Equipped with independent emergency stop for safe operation.



Model	NK6040T10	NK8060T15
Hydraulic power	10Ton	15Ton
Bale size(L*W*H)MM	600*400*(350-600)mm	800*600*(400-800)mm
Feed opening size(L*H)MM	540*450mm	660*450mm
Capability	6-8 bale/H	5-7 bale/H
Bale weight( KG)	50-80kg	50-120kg
Voltage(can be customized)	220V/50HZ	380V/50HZ
Power(KW)	2.2KW/3HP	3KW/4HP
Machine size(L*W*H)MM	870*780*2150mm	1100*850*2850mm
Machine weight(KG)	600kg	850kg

## Cardboard Box Baler Machine (NK1070T40/NK1070T60)

### Usage:

Specially used for recycling waste paper, cardboard box, corrugated paper baling machine

### Features:

- This machine uses the hydraulic transmission, with two cylinder operate, durable and powerful.
- It uses the button common control which may realize the many kinds of work way.
- The machine working pressure traveling schedule scope can be adjusted according to the material balesize.
- Special feed opening and automatic output package of equipment.
- The Pressure force and packing size may design according to customers requirement.



Model	NK1070T40	NK1070T60
Hydraulic power	40Ton	60Ton
Bale size(L*W*H)MM	1100*700*(500-900)mm	1100*700*(500-900)mm
Feed opening size(L*H)MM	1100*500mm	1100*500mm
Chamber size(L*W*H)MM	1100*700*1450mm	1100*700*1450mm
Capability	5-8 bale/H	5-8 bale/H
Voltage(can be customized)	380V/50HZ	380V/50HZ
Power(KW)	11KW/15HP	15KW/20HP
Machine size(L*W*H)MM	1600*1100*3150mm	1600*1100*3200mm
Machine weight(T)	1.8T	2.2T

## Textile/Clothes Balers

(NK30LT/NK50LT/NK60LT/NK80LT/NK120LT)

### Usage:

Widely applied by second-hand clothes recycling plants for compressing clothing, comforters, shoes etc. Hydraulic lifting chamber door improves the work efficiency, conveniently for packaging and the tight crossed tying.

### Features:

- Hydraulic lifting chamber door improves the work efficiency, conveniently for packaging and the '# 'tying.
- The ram will stop running downwards when the feeding gate is opened which ensure the safety of the operation.
- Equipped with independent emergency stop for safe operation



Model	NK30LT	NK50LT	NK60LT
Hydraulic power	30Ton	50Ton	60Ton
Packaging size (L*W*H) mm	600*400*400-600	760*520*400-800	1000*700*400-800
Feed opening size (L*H) mm	600*460	760*460	1000*460
Chamber Size (L*W*H) mm	600*400*1200	760*520*1250	1000*700*1250
Bale weight(KG)	45-100Kg	100-150Kg	150-200Kg
Capacity	12-15bale/H	10-12 bale/H	10-12 bale/H
System Pressure	25Mpa	25Mpa	25Mpa
Packing materials	Cross packing	Cross packing	Cross packing
Voltage	380V/50HZ	380V/50HZ	380V/50HZ
Power (KW)	11KW/15HP	11KW/15HP	11KW/15HP
Machine size (L*W*H) mm	1300*760*3780	1500*880*3780	1700*1000*3780
Machine Weight(T)	1.8T	2.3T	2.9T

## Packing Case



Model	NK80LT	NK120LT
Hydraulic power	80Ton	120Ton
Packaging size (L*W*H)mm	1100*800*400-900	1100*750*1250-1350
Feed opening size (L*H)mm	1100*460	1100*750
Chamber Size (L*W*H) mm	1100*800*1250	1100*750*1860
Bale weight (KG)	200-300Kg	450-550Kg
Capacity	10-12 bale/H	10-12 bale/H
System Pressure	25Mpa	25Mpa
Packing materials	Cross packing	Cross packing
Voltage (can be customized)	380V/50HZ	380V/50HZ
Power(KW)	15KW/20HP	18.5KW/25HP
Machine size (L*W*H)mm	1850*1200*3800	1850*1200*5060
Machine Weight(T)	3.5T	5.1T

## Double chambers Clothes Balers (NK-T60/NK-T60L/NK-T90L)

### Usage:

It used in used clothes, towels, rags, fabrics, etc.

### Features:

- Double chambers structure, can pack and feed at the same time, greatly improve work efficiency.
- The way of carrying the case, easy to operate, improve efficiency.
- Cross-bundling to achieve a tight and clean pack.
- Suitable for weaving/plastic film/bag to wrap the clothes bale.



Model	NK-T60L	NK-T60	NK-T90L
Hydraulic power	60Ton	60Ton	90Ton
Bale size(L*W*H)mm	740*340*500-1000mm	600*400*400-800mm	760*520*500-1000mm
Feed opening size(L*H)	730*550mm	600*400mm	750*550mm
Packing materias	Garment,Sack	Garment,Sack	Garment,Sack
Output capacity	10-12 bales/H	10-12 bales/H	10-12 bales/H
Bale weight(KG)	45-100kg	45-55Kg	75-150Kg
Voltage	380V/50HZ	380V/50HZ	380V/50HZ
Packing way	Horizontal 5*2 Vertical	Horizontal 5*2 Vertical	Horizontal 5*2 Vertical
Power(KW)	11KW/15HP	11KW/15HP	18.5KW/25HP
Feeding Way	Manual	Manual	Manual
Machine size/(L*W*H)	3500*1500*4600mm	2900*1400*3850mm	3800*1500*4600mm
Machine Weight(T)	3.8T	3.2T	4T

## Double chambers Clothes Balers(Belt conveyors) (NK-T90S/NK-T120S)

### Usage:

It used in used clothes, towels, rags, fabrics, etc.

### Features:

- Double chambers structure, can pack and feed at the same time, greatly improve work efficiency
- The way of carrying the case, easy to operate, improve efficiency
- Cross-bundling to achieve a tight and clean pack
- Suitable for weaving/plastic film/bag to wrap the clothes bale
- The machine matched with conveyor to improve the work efficiency, achieved automatic type.



Model	NK-T90S	NK-T120S
Hydraulic power	90T	120T
Bale size(L*W*H)mm	760*520*500-1000mm	1400*1200*800mm
Feed opening size/(L*H)mm	750*550mm	1400*1200mm
Packing materias	Garment,Sack	Garment,Sack
Output capacity	20-25 bales/H	20-25 bales/H
Bale weight	70-150Kg	400-500Kg
Voltage	380V/50HZ	380V/50HZ
Packing way	Horizontal 5*2 Vertical	Horizontal 5*2 Vertical
Power(KW)	18.5KW/25HP	45KW/60HP
Feeding Way	Rubber conveyor	Rubber conveyor
Machine size/(L*W*H) mm	3800*1500*4600mm	4800*2200*5600mm
Machine Weight(T)	9T	18T

## Fiber/coco coir Fiber Baling Machine

(NK110T150/NK110T200)

### Usage:

Used for fiber,coco coir,palm fiber,foam kinds of loose products compression.

### Features:

- This machine use two-cylinder balance compress , The special hydraulic system make the power more stable
- Specially used for compressing all kinds of nature fiber like palm fiber,coir fiber etc
- High load structure make it safe and reliable. It uses pillar type pump with high flux.
- Its door can all open. And the machine can pack materials be cross.
- It use manual valve control.



Model	NK110T150	NK110T200
Hydraulic power	150Ton	200Ton
Packaging size (L*W*H)mm	1100*1000*400-1200mm	1100*1000*400-1200mm
Feed opening size(L*H)mm	1100*800mm	1100*800mm
Chamber Size(L*W*H)mm	1100*1000*1800mm	1100*1000*1800mm
Capability	4-6 bale/H	4-6 bale/H
Bale weight (KG)	400-500kg	550-600kg
Voltage	380V/50HZ	380V/50HZ
Power(KW)	22KW	30KW
Machine size (L*W*H )mm	1900*1700*4210mm	1900*1700*4610mm
Machine Weight(T)	7T	9T

## Tire/Tyre Baler (NKOT120/NKOT150/NKOT180/NKOT220)

### Usage:

It is mainly used for scrap tires, truck tires, OTR tires and rubber compression packaging.

### Features:

- This machine is specialized in tires compress and baling.
- Hydraulic pressure open the door, two cylinders, manual valve operate, durable and reliable.
- Mobile and Stationary type double Anti-kickback devices.
- Front & Back opening doors for convenient strapping and bale ejecting



Model	NKOT120	NKOT150	NKOT180	NKOT220
Hydraulic power	120Ton	150Ton	180Ton	220Ton
Bale size( L*W*H )mm	1400*700*700-1100	1800*1000*700-1250	1800*1200*700-1250	1800*1200*1400
Feed opening size (L*H)	1400*600mm	1800*750mm	1800*750mm	1800*750mm
Chamber Size (L*W*H )	1400*700*1700 mm	1800*1000*2100 mm	1800*1200*2100 mm	1800*1200*2400 mm
Capability	5-6 bale/H	4-5 bale/H	4-5 bale/H	4-5 bale/H
Bale weight(KG)	500-700Kg	1000-1500Kg	1300-2000Kg	1600-2000Kg
Voltage	380V/50HZ	380V/50HZ	380V/50HZ	380V/50HZ
Power (KW)	15KW/20HP	22KW/30HP	30KW/40HP	45KW/60HP
Machine Weight(T)	4.5T	7T	9T	13T

## Cans/PET Bottle Balers

(NK080T80/NK080T100/NK080T120)

### Usage:

Specially used for recycling the cans, PET bottles, oil tank etc.

### Features:

- This machine uses the equipment of two-cylinder balance compression and special hydraulic system which make the power more stable.
- The high load structure, automatic turn bag set, makes it safe and reliable.
- The way to open the door in the right angle make it pack be cross.
- The machine is suitable for the compression and packing of rigid plastics, computer outer covering and related materials.



Model	NK080T80	NK080T100	NK080T120
Hydraulic power	80Ton	100Ton	120Ton
Packaging size (L*W*H)mm	1000*800*500-1000mm	1000*800*500-1000mm	1000*800*500-1000mm
Feed opening size(L*H)mm	1000*500mm	1000*500mm	1000*500mm
Chamber Size (L*W*H)mm	1000*800*1500mm	1000*800*1500 mm	1000*800*1500mm
Capability	3-6 bale/H	3-6 bale/H	3-6 bale/H
Bale weight(KG)	150-250Kg	200-350Kg	350-500Kg
Voltage	380V/50HZ	380V/50HZ	380V/50HZ
Power(KW)	11KW/15HP	15KW/20HP	15KW/20HP
Machine size (L*W*H)mm	1700*1200*3300mm	1700*1400*3300mm	1700*1400*3350mm
Machine Weight (T)	2.8T	3.2T	3.4T

## Vertical Metal Baler Machine

(NK1580T200/NK1611T300)

### Features:

Hydraulic pressure open the door with two cylinders, auto operate, These vertical baling machines are best suited for Aluminum manufacturers, warehouses, grocery stores, or any commercial entity that generates/ recycles materials. They can handle materials like Aluminum scrap metal, cardboard, cartons, coconut fiber, plastic bottles and UBC (used beverage containers). These balers also can handle shrink wrap, soft packaging, fabric scrap, tyre / tires, steel shavings, One of the main selling points of vertical balers is their size / operational footprint. Suffice to say, these machines can fit almost anywhere, and are quite movable, making them ideal for anyone who has waste to bale, but does not need a permanently installed / large-scale (and unwieldy) solution.



Model	NK1580T200	NK1611T300
Hydraulic power	200Ton	300Ton
Open Door way	Automatic	Automatic
Bale size (L*W*H)mm	1500*800*1100 mm	1600*1100*400-1200 mm
Feed opening size (L*H)mm	1500*800mm	1600*1100mm
Capability	3-6 bale/H	4-6 bale/H
Bale weight(KG)	1000-2000Kg	1500-2000Kg
Voltage	380V/50HZ	380V/50HZ
Power	22KW/30HP	30KW/40HP
Machine size (L*W*H)mm	1800*1000*4600mm	1900*1700*4800mm
Machine Weight(T)	11T	15T

## Heavy waste hydraulic shears

### Usage:

Applicable to the processing equipment of scrap steel shearing, used for steel plates, round steel, steel pipes, scrap aluminum alloys, copper parts, steel and other materials are cut by cold work.



Model	Cutting pressure(T)	Capacity(T/H)	Blade length(MM)	Cutting speed(T/M)	Power(KW)
NKLMJ-315	315	3-5	1200	2-4	22*2
NKLMJ-400	400	4-7	1400	2-4	37*2
NKLMJ-500	500	5-8	1500	2-4	45*2
NKLMJ-630	600	8-10	1600	2-4	45*3
NKLMJ-800	800	12-15	1800	2-4	55*3
NKLMJ-1000	1000	15-20	2000	2-4	55*4
NKLMJ-1250	1250	20-30	2500	2-4	55*4
NKLMJ-1500	1500	30-50	2500	2-4	75*4
NKLMJ-2000	2000	60-80	2700	2-4	75*6

## Cutting Machine (NKC120/NKC150/NKC180)

### Features:

- Hydraulic control operation ,manual feeding ,auto-cutting .
- Hydraulic system stabilization , double cylinder balance cutting .
- It can fix security masks and safety nets equipment for protecting .
- It can fix auto-roller processing after cutting .



Model	NKC120	NKC150	NKC180
Cutting width	1200mm	1500mm	1800mm
Cutting stroke	1200mm	1000mm	800mm
Hydraulic power	120Ton	150Ton	180Ton
Single time	30-40S	40-50S	20S
Pressure	12Mpa	15Mpa	18Mpa
Power	15KW/20HP	22KW/30HP	30KW/40HP
Machine size (L*W*H)	3000*700*3600mm	2400*800*3800mm	2100*1000*2800mm
Machine Weight(T)	2.8T	3.5T	5T

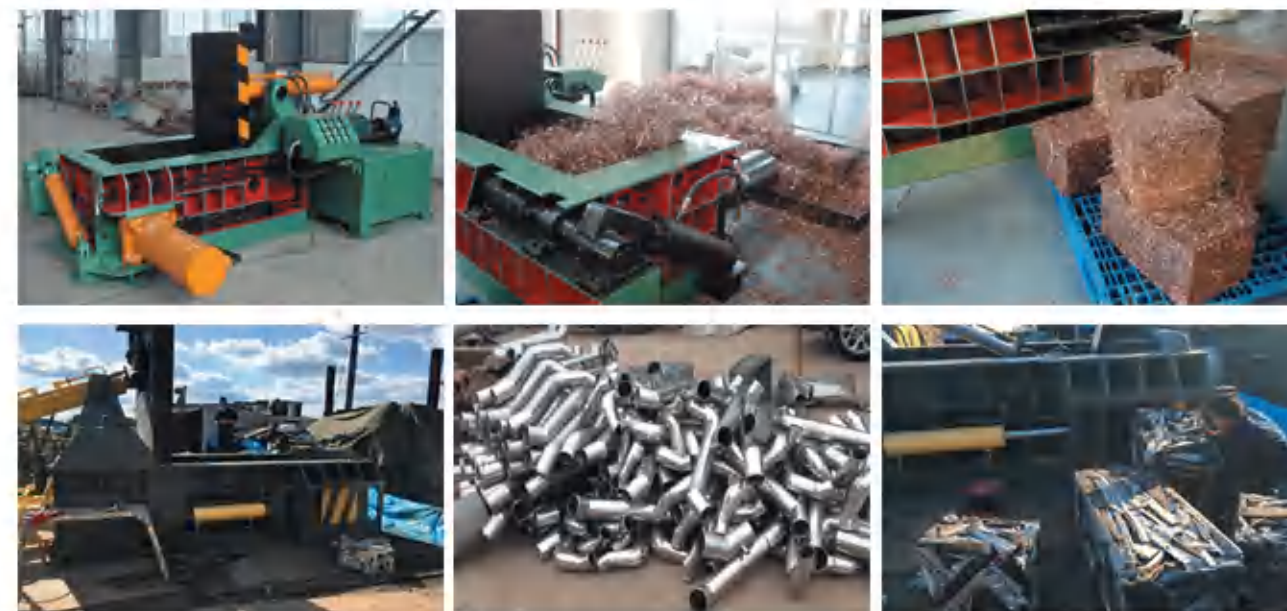
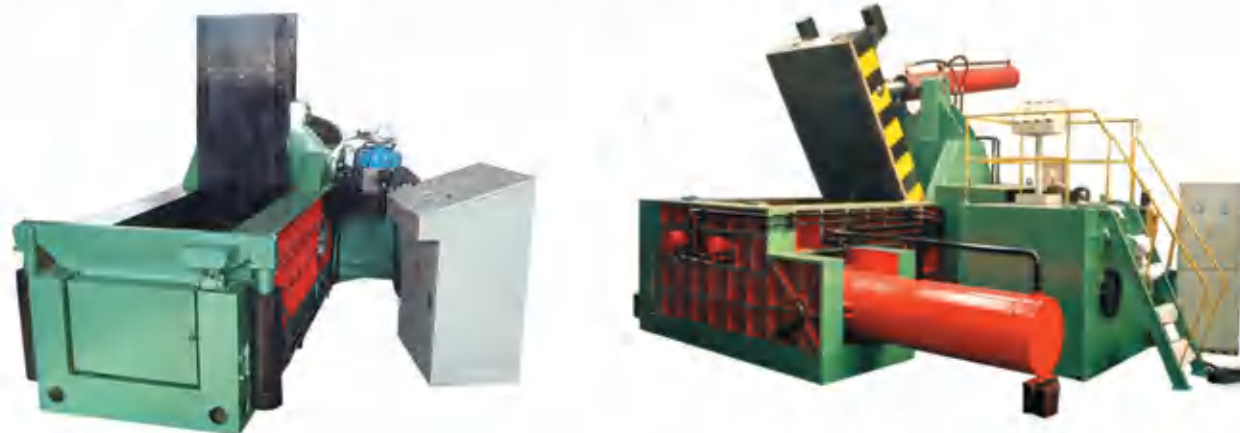
## Scrap Metal Press Machine(NKY Series)

### Usage:

Hydraulic metal balers are applicable in steel plants, recycling companies, ferrous&non-ferrous smelting industry to press metal scraps(steel, copper, aluminum, stainless steel, discarded automobiles) into acceptable furnace charges (shapes, cuboid, cylinder or octagon), so as to reduce cost of transportation to increase speed of furnace charging.

### Features:

- Hydraulic drive for all machine types, manual valve control or PLC control.
- Bale-discharging: "turn-out", "push-out", "forward-out" or manual discharging
- No footing bolts needed in installation, diesel engine can be equipped for power.
- Baling force 10 grades from 100 to 400 tons, productivity from 4 to 40 tons per shift
- The feeding size and bale size can be design according to customer specifications.



NKY81 Series Hydraulic Scrap Metal Baler

NO	Type	Nominal force (KN)	Power(KW)	Feed Box Size(mm)	Bale Size(mm)	Productivity (kg/h)	Operation
1	NKY81-1250	1250	15	1200*700*600	300*300	800-1500	Manual or PLC
2	NKY81Q-1350	1350	22	1400*600*600	600*240	1500-2200	Manual or PLC
3	NKY81-1600A	1600	22	1600*1000*700	350*350	2000-3000	Manual or PLC
4	NKY81-1600B	1600	22	1600*1200*800	400*400	2000-3000	Manual or PLC
5	NKY81-2000A	2000	30	1600*1200*800	400*400	2000-3000	Manual or PLC
6	NKY81-2000B	2000	37	1800*1400*900	450*450	2500-3500	Manual or PLC
7	NKY81-2500A	2500	44	1800*1400*900	450*450	3000-5000	Manual or PLC
8	NKY81-2500B	2500	44	2000*1400*900	500*500	3000-5000	Manual or PLC
9	NKY81-2500C	2500	60	2000*1750*1000	500*500	3500-5000	Manual or PLC
10	NKY81-3150A	3150	60	2000*1400*1000	500*500	3500-5000	Manual or PLC
11	NKY81-3150B	3150	60/66	2000*1750*1200	500*500	3500-5000	Manual or PLC
12	NKY81-3150C	3150	90	2600*2000*1200	550*550	4000-7000	Manual or PLC
13	NKY81-4000A	4000	66	2000*1600*1100	550*550	4000-7000	Manual or PLC
14	NKY81-4000B	4000	110	2600*1750*1200	550*550	5000-8000	Manual or PLC
15	NKY81-4000C	4000	90	3000*2000*1200	600*600	6000-8000	Manual or PLC
16	NKY81-6000	6000	135	5000*2000*1200	700*700	8000-10000	Manual or PLC

## Bagging Machine ( NKB180/NKB220/NKB240)

### Usage:

It used in sawdust, wood shaving, straw, chips, sugarcane, paper powder mill, rice husk, cottonseed, rad, peanut shell, fiber and other similar loose fiber.

### Features:

- PLC Control System which simplifies the operation and promotes accuracy.
- Sensor Switch on Hopper for controlling bales under your desired weight.
- One Button Operation makes baling, bale ejecting and bagging a continuous, efficient process, saving you both time and money.
- Automatic Feeding Conveyor can be Equipped for further enhancing feeding speed and maximizing throughput.



Model	NKB180	NKB220	NKB240
Bale size(L*W*H)mm	650*416*216mm	670*480*280mm	670*500*230mm
Feed opening size(L*H)mm	1000*650mm	1000*670mm	1000*670mm
Packing materials	Straw/Fiber	Corn cob	Sawdust/Rice husk
Output capacity	120-150 bale/H	150-180 bale/H	180 -200bale/H
Capability	3-3.5T/H	3.5-4.5T/H	4.5-6T/H
Voltage	200-480V/50HZ	200-480V/50HZ	200-480V/50HZ
Strapping	Plastic bags	Plastic bags	Plastic bags
Power(KW)	18.5KW/25HP	22KW/30HP	30KW/40HP
Feeding way	Screw conveyor	Screw conveyor	Screw conveyor
Machine size(L*W*H)mm	3880*2740*2820mm	3850*2650*2640mm	3840*2640*2580mm
Machine Weight(T)	4.5T	4.8T	5.1T

## Straw/Hay Bagging Machine( NKB260/NKB280 )

### Application:

The straw baler is applied to corn stalks, wheat stalks, rice straw, sorghum stalks, fungus grass, alfalfa grass and other straw materials. It also protects the environment, improves the soil, and creates good social benefits.



Model	NKB260	NKB280
Bale size (L*W*H)mm	670*450*300mm	1500*1200*900mm
Bale weight(KG)	30-40kg	Dry 450-500kg
Feed opening size (L*H)mm	1000*670mm	2000*1200mm
Packing materials	Sawdust	Straw
Output capacity	200-220 bale/H	30 bale/H
Capability	5-6T/H	12-15T/H
Voltage	200-480V/50HZ	200-480V/50HZ
Strapping	Plastic bags/woven bags	Plastic bags/woven bags
Power(KW)	37KW/50HP	75KW*2/200HP
Feeding way	Belt conveyor	Steel conveyor
Machine size (L*W*H)mm	2920*2880*2580mm	9800*4800*3580mm
Machine Weight (T)	5.4T	32T

## Constant Weight Bagging Machine (NKB1-NKB25)

### Usage:

Specially designed for baling and bagging wood shavings/chips, waste fabric, cotton yarn and textile scraps etc. Widely used by laboratories, the pets bedding materials plants, clothes recycling plants etc

### Features:

- Equipped with weighing device, ensures uniform bale weight
- Only one press button required for the whole pressing and ejecting system, for conveniently operation
- One time material feeding, improves the working efficiency



Model	NKB1	NKB5	NKB10
Bale size(L*W*H)MM	200*130*100mm	400*300*100mm	400*400*180mm
Bale weight(KG)	1-1.5kg	5kg	10kg
Voltage	380V/50HZ	380V/50HZ	380V/50HZ
Power(KW)	18.5KW/25HP	7.5KW/10HP	7.5KW/10HP
Machine size(L*W*H)	3800*2500*2100mm	2600*1750*1480mm	2660*1760*1550mm
Machine Weight(KG)	2400kg	765kg	815kg

Model	NKB15	NKB20	NKB25
Bale size(L*W*H)MM	550*400*250mm	750*400*330mm	800*400*330mm
Bale weight(KG)	15kg	20kg	25kg
Voltage	380V/50HZ	380V/50HZ	380V/50HZ
Power(KW)	11KW/15HP	15KW/20HP	15KW/20HP
Machine size(L*W*H)	2750*1810*1550mm	2980*2015*1550mm	3210*2330*1550mm
Machine Weight (KG)	870kg	950kg	1050kg

### Packaging Advantage

NKB series bagging machine integrates compression and bagging. It only needs to manually put the plastic bag on the bag outlet, and the machine will complete the automatic compression bagging process. This machine reduces waste storage space, saves up to 80% of stacking space, reduces transportation costs, and is conducive to environmental protection and waste recycling.

### Packaging effect



## Block Making Machine(NKB150/NKB200/NKB250)

### Usage:

Specially designed sawdust, wood meal, shaving, cocopeat, peanut shell, cornstalk material compression.

### Features:

- Used PLC control system, hydraulic transmission, horizontal continuous out bags, speed, high yield.
- The operation is simple, easy to used and high degree of automation, recruitment, using artificial feeding or automatic feeding conveyor.
- The machine is mainly applicable in sawdust, cotton seed, shell husk compression moulding material, facilitate their storage, transportation cost.
- Broken material via the massive objects, compressed into directly handling, no bag. The rear can be spread by human.



Model	NKB150	NKB200	NKB250
Pressure	150Ton	200Ton	250Ton
Bale Size(L*W*H)MM	350*350*(220-300)mm	480*480*(220-350)mm	480*480*(220-350)mm
Working Pressure	21MPa	21MPa	25MPa
Compress time	20s	22s	22s
Bale Capacity	100 block /H	120 block /H	140 block /H
Moisture require	13% or under	13% or under	13% or under
Feed Opening Size(L*H)	500*350mm	700*480mm	700*480mm
Bale Weight	13-16Kg/bag	30-35Kg/bag	30-50Kg/bag
Capacity	1.2-1.5T/hour	2.5-3T/hour	3-3.5T/hour
Voltage	200-480V/50HZ/3Phase	200-480V/50HZ/3Phase	200-480V/50HZ/3Phase
Power	30HP	40HP	60HP
Machine Size(L*W*H)	4200*950*1399mm	4260*1100*1800mm	4560*1200*1800mm
Machine Weight (T)	4T	6T	8.5T

## Scrap foam Press Machine (NKBD350)

### Usage:

This equipment is mainly used for waste paper processing, including paper, EPS (polystyrene foam), XPS, EPP, etc. The material is crushed by a pulverizer and then compacted into pieces.

### Features:

- Simple screen display and parameter settings
- Simple and reliable operation
- Motion feedback and time control
- Multiple alarms and protection



Model	NKBD350
Bale size (mm)	250*350*L
Capacity (kg/H)	350kg/H
Pressure (KN)	3500KN
Motor (KW)	37.5KW
Compress ratio	50:1
Shredder capacity (kg/H)	700kg/H
Shredder power	11kw
Hopper size (down )	1000*800mm
Machine weight (T)	5.8T

## Cow dung filter Press(NKBT250)

### Machine introduction :

- The cow dung filter press is mainly used for the compression and compression of cow dung, sheep dung, horse dung, pig dung and other animal dung. The cow dung after dehydration by the cow dung filter press has a lower moisture content and can be used as a cow Mattress material, bio-organic fertilizer, etc.
- The separation speed of the cow dung filter press is fast, the moisture content of the separated manure residue is below 50%, and the residue content and water content can be adjusted. It can be applied to feeds of different ingredients (such as grass and concentrated feed). It is easy to transport and solid. Granules are very suitable for use as raw materials for organic fertilizers.

### Machine characteristics:

- Cow dung filter press Simple structure, easy to use
- High working efficiency, fast speed, stable action, low failure rate and easy to clean and maintain
- Low energy consumption, low noise, environmental protection and energy saving.
- The water content after compression is less than 50%



Model	NKBT250
Motor	45KW+7.5KW
Control system	Servo system control
Cylinder size(mm)	350*4300mm
Moisture	≤50%
Capacity (T/H)	4-6T/H (cow dung)
Diameter (MM)	600(D)*500-1000(L)
Compress room size (MM)	600*2400mm
Machine weight (T)	16T

### Working site



## Semi-automatic Baling Machine

### Usage:

Semi-automatic horizontal hydraulic baler is mainly suitable for waste paper, plastics, cotton, wool velvet, waste paper boxes, waste cardboard, fabrics, cotton yarn, packaging bags, knitwear velvet, hemp, Sacks, siliconized tops, hair balls, cocoons, mulberry silk, hops, wheat wood, grass, waste and other loose materials to reduce packaging.

### Machine Features:

- Heavy duty close-gate design for more tighter bales,
- Hydraulic locked gate ensures more convenient operation.
- It can feed material by conveyor or air-blower or manual.
- Independent Produce (Nick Brand), It can automatically inspection feed, it can press to front and each time and available for manual bunch one-time automatic push bale out and so on process.

Packing size and bale size may design according to customers requirement!



### Equipment brand configuration instructions:

Main Parts	Brand
PLC Controller	Independent Produce(Nick Brand)
Main oil pump	Senari
Electrical components	Schneider or Mitsubishi
Oil cylinder	Domestic(2 times annealing)
Seals	American Parker
Main Motor	Siemens motor
Bearing	Domestic well-known brand
Hydraulic valveBrand	Luji(Jiayite)Domestic high-end brand

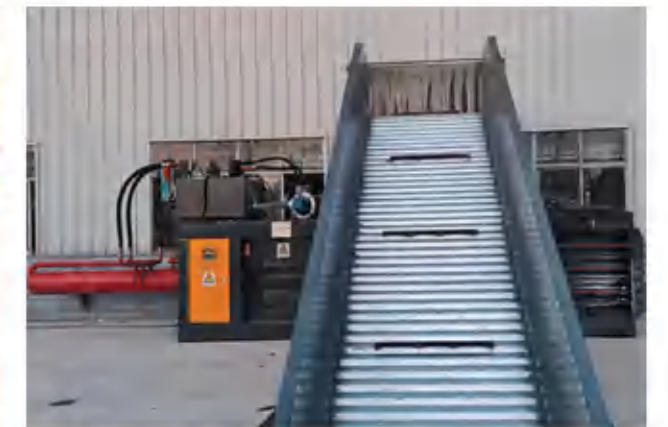


Model	NKW60BD	NKW80BD
Pressure(KN)	600KN	800KN
Cylinder size	Φ180-3500	Φ200-3700
Bale size(W*H*L)(MM)	750*850*(300-1700)MM	1000*800*(300-1700)MM
Bale weight(KG)	250-350KG	400-500KG
Capacity(T/H)	1-1.5T/H	2-3T/H
Bale density(KG/ m <sup>3</sup> )	250-350KG/ m <sup>3</sup>	350-450KG/ m <sup>3</sup>
Bale line	4line	5line
Power (KW)	18.5KW/25HP	22KW/30HP
Out-bale way	Disposable bale out	Disposable bale out
Feeding device	Conveyor	Conveyor
Conveyor size(MM)(L*W)	10000*850MM	10000*1200MM
Machine weight(T)	10.1T	12.5T
Machine size (MM)	8450*1350*1950MM	8750*1770*2000MM

Model	NKW100BD	NKW125BD
Pressure(KN)	1000KN	1250KN
Cylinder size	Φ 220-4300	Φ 250-4300
Bale size(W*H*L)(MM)	1100*850*(300-1700)MM	1100*1250*(300-1700)MM
Bale weight(KG)	500-600KG	700-1000KG
Capacity(T/H)	3-5T/H	5-6T/H
Bale density(KG/ m <sup>3</sup> )	400-450KG/ m <sup>3</sup>	450-500KG/ m <sup>3</sup>
Bale line	4line	5line
Power (KW)	30KW/40HP	30KW/40HP
Out-bale way	Disposable bale out	Disposable bale out
Feeding device	Conveyor	Conveyor
Conveyor size(MM)(L*W)	12000*1800MM	12000*2000MM
Machine weight(T)	14T	16T
Machine size (MM)	9750*1900*2000MM	9750*1900*2300MM



### Packing Site



Model	NKW160BD	NKW180BD
Pressure(KN)	1600KN	1800KN
Cylinder size	Φ 280-4300	Φ 300-4300
Bale size(W*H*L)(MM)	1100*1250*(300-1700)MM	1100*1250*(300-1700)MM
Bale weight(KG)	1000-1200KG	1200-1500KG
Capacity(T/H)	6-8T/H	8-10T/H
Bale density(KG/ m <sup>3</sup> )	600-650KG/ m <sup>3</sup>	650-700KG/ m <sup>3</sup>
Bale line	7line	7line
Power (KW)	37.5KW/50HP	45KW/60HP
Out-bale way	Disposable bale out	Disposable bale out
Feeding device	Conveyor	Conveyor
Conveyor size(MM)(L*W)	12000*2000MM	12000MM*2000MM
Machine weight(T)	19T	24T
Machine size (MM)	9750*1900*2300MM	9800*1900*2300MM

Model	NKW200BD	NKW220BD
Pressure(KN)	2000KN	2200KN
Cylinder size	Φ 320-4300	Φ 350-4300
Bale size(W*H*L)(MM)	1100*1250*1700MM	1100*1250*1700MM
Bale weight(KG)	1200-1500KG	1300-1600KG
Capacity(T/H)	9-12T/H	10-15T/H
Bale density(KG/ m <sup>3</sup> )	700-750KG/ m <sup>3</sup>	750-800KG/ m <sup>3</sup>
Bale line	7line	7line
Power (KW)	45KW/60HP	45KW/60HP
Out-bale way	Disposable bale out	Disposable bale out
Feeding device	Conveyor	Conveyor
Conveyor size(MM)(L*W)	12000*2000MM	12000*2000MM
Machine weight(T)	26T	28T
Machine size (MM)	9900*2000*2400MM	9900*2000*2400MM

### Packing Site



### EQUIPMENT ACCESSORIES



### DELIVERY SITE



# Full automatic Baler Machine

## Usage:

The fully automatic hydraulic baler can be used for the recovery, compression and packaging of waste paper, waste cardboard, carton factory scraps, waste books, waste magazines, plastic film, straw and other loose items. It is widely used in waste recycling stations and large garbage disposal sites.

## Machine Features:

- Photoelectric switch activates baler when charge box is full.
- Fully automatic compression and unmanned operation, suitable for places with a lot of materials. The items are easy to store and stack and reduce transportation costs after they are compressed and bundled.
- Unique automatic strapping device, speed quickly, frame simple motion steady. Failure rate is low and easy to clean maintenance.
- Can choose transmission line materials and air-blower Feeding Suitable to waste cardboard recycling companies, plastic, fabric large garbage disposal sites and soon.
- Adjustable bales length and bales quantity accumulating function make the operation of the machine more convenient.
- Automatically detect and show the errors of the machine which improve the machine inspection efficiency.
- International standard electric circuit layout, graphic operation instruction and detailed parts marks makes the operation been more easily understanding and improves the maintenance efficiency.



Model	NKW60Q	NKW80Q
Pressure(KN)	600KN	800KN
Cylinder size	Φ180	Φ200
Bale size(MM)(W*H)	750*850mm	1100*850mm
Bale weight(KG)	300-400KG	400-600KG
Capability(T/H)	1-3T/H	3-5T/H
Material density(KG/m <sup>3</sup> )	300-400KG/m <sup>3</sup>	300-400KG/m <sup>3</sup>
Bale line	4line	4line
Strapping way	Automatic	Automatic
Power (KW)	22KW	30KW
Feeding device	conveyor	conveyor
Conveyor size(MM)(L*W)	8000*700mm	8000*800mm
Machine weight(T)	10T	13T



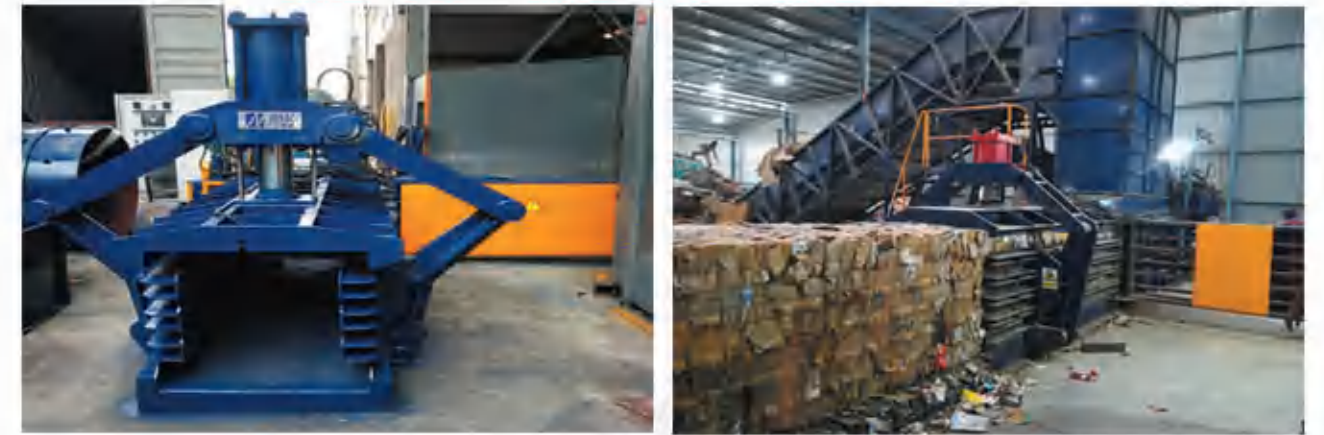
Model	NKW100Q1	NKW100Q2
Pressure(KN)	1000KN	1000KN
Cylinder size	Φ220	Φ220
Bale size(MM)(W*H)	1100*850mm	1100*1100mm
Bale weight(KG)	550-750KG	750-950KG
Capability(T/H)	6-8T/H	7-9T/H
Material density(KG/m <sup>3</sup> )	300-400KG/m <sup>3</sup>	300-400KG/m <sup>3</sup>
Bale line	4line	5line
Strapping way	Automatic	Automatic
Power (KW)	30KW	37.5KW
Feeding device	conveyor	conveyor
Conveyor size(MM)(L*W)	10000*1800mm	10000*1800mm
Machine weight(T)	17T	19T

### Packing Site



Model	NKW125Q1	NKW125Q2	NKW125Q3
Pressure(KN)	1250KN	1250KN	1250KN
Cylinder size	Φ250	Φ250	Φ250
Bale size(MM)(W*H)	1100*1100mm	1100*1250mm	1100*1100mm
Bale weight(KG)	950-1100KG	1000-1200KG	1000-1100KG
Capability(T/H)	8-10T/H	10-12T/H	15-18T/H
Material density(KG/m <sup>3</sup> )	400-450KG/m <sup>3</sup>	400-450KG/m <sup>3</sup>	400-450KG/m <sup>3</sup>
Bale line	5line	5line	5line
Strapping way	Automatic	Automatic	Automatic
Power (KW)	37.5KW	45KW	30KW*2
Feeding device	conveyor	conveyor	conveyor
Conveyor size(MM)(L*W)	12000*2000mm	12000*2000mm	12000*2000mm
Machine weight(T)	20T	21T	22T

Model	NKW160Q1	NKW160Q2
Pressure(KN)	1600KN	1600KN
Cylinder size	Φ280	Φ280
Bale size(MM)(W*H)	1100*1100mm	1100*1250mm
Bale weight(KG)	1100-1300KG	1200-1400KG
Capability(T/H)	10-12T/H	12-15T/H
Material density(KG/m <sup>3</sup> )	500-550KG/m <sup>3</sup>	500-550KG/m <sup>3</sup>
Bale line	4-5line	4-5line
Strapping way	Automatic	Automatic
Power (KW)	37.5KW	45KW
Feeding device	conveyor	conveyor
Conveyor size(MM)(L*W)	13000*2000mm	13000*2000mm
Machine weight(T)	24T	25T

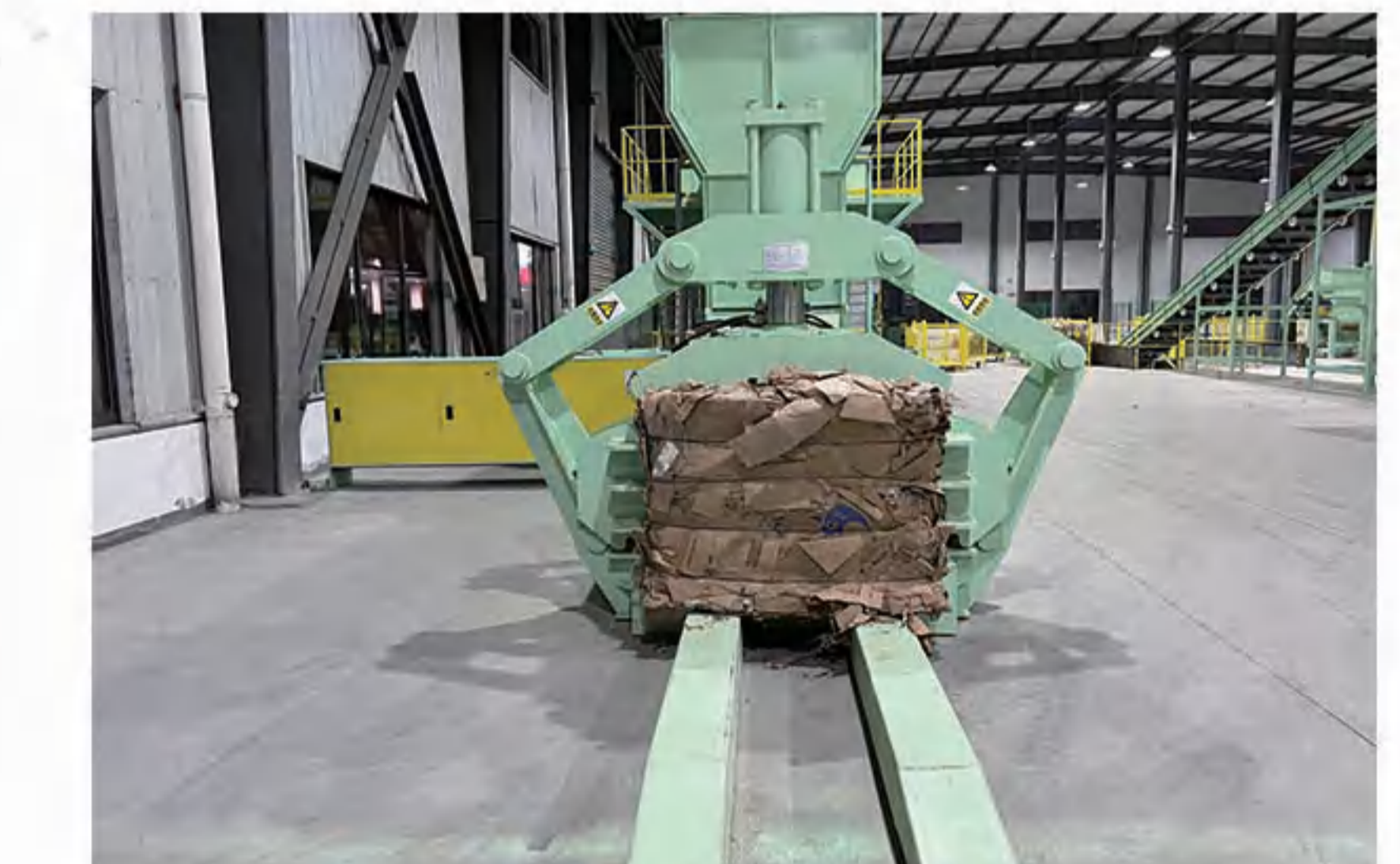


Model	NKW180Q1	NKW180Q2
Pressure(KN)	1800KN	1800KN
Cylinder size	Φ300	Φ300
Bale size(MM)(W*H)	1100*1100mm	1100*1250mm
Bale weight(KG)	1200-1500KG	1200-1500KG
Capability(T/H)	22-25T/H	25-28T/H
Material density(KG/m <sup>3</sup> )	550-600KG/m <sup>3</sup>	550-600KG/m <sup>3</sup>
Bale line	5line	5line
Strapping way	Automatic	Automatic
Power (KW)	37.5KW*2	37.5KW*2
Feeding device	conveyor	conveyor
Conveyor size(MM)(L*W)	13000*2000mm	13000*2000mm
Machine weight(T)	28T	30T

Model	NKW200Q1	NKW200Q2
Pressure(KN)	2000KN	2000KN
Cylinder size	Φ320	Φ320
Bale size(MM)(W*H)	1100*1000mm	1100*1250mm
Bale weight(KG)	1200-1600KG	1300-1600KG
Capability(T/H)	28-30T/H	32-35T/H
Material density(KG/ m <sup>3</sup> )	500-600KG/ m <sup>3</sup>	500-600KG/ m <sup>3</sup>
Bale line	5line	5line
Strapping way	Automatic	Automatic
Power(KW)	45KW*2+15KW	45KW*2+15kw
Feeding device	conveyor	conveyor
Conveyor size(MM)	14000*2000mm	14000*2000mm
Machine weight(T)	30T	32T



### Package effect



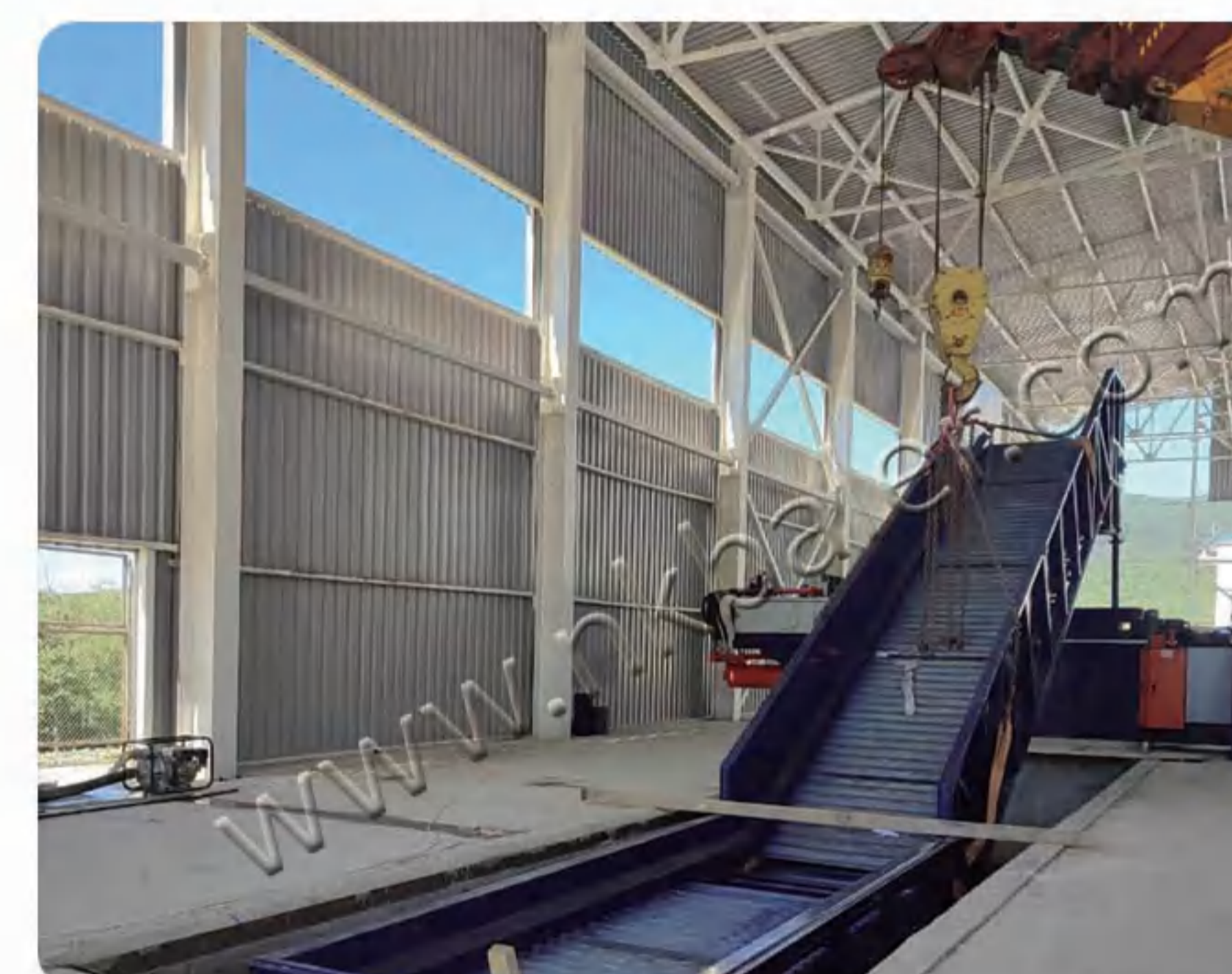
### Delivery site



Model	NKW220Q	NKW250Q
Pressure(KN)	2200KN	2500KN
Bale size(MM)(W*H)	1100*1100mm	1100*1250mm
Cylinder size	Φ350	Φ380
Bale weight(KG)	1200-1600KG	1300-1600KG
Capability(T/H)	28-30T/H (OCC)	32-35T/H(OCC)
Material density(KG/ m <sup>3</sup> )	550-600KG/ m <sup>3</sup>	600-650KG/ m <sup>3</sup>
Bale line	5line	5line
Strapping way	Automatic	Automatic
Power(KW)	45KW*2+15KW	45KW*2+15KW
Conveyor size(MM)	16000*2000mm	16000*2000mm
Feeding device	Chain conveyor	Chain conveyor
Machine weight(T)	35T	38T



### Installation site



### Worknig site

