

2025 INTRODUCTION OF SIMON
DECORATIVE PAINT



DIRECTORY



一) STUCCO

Santa Rosa, Marmorino、 Volcanic Rocks、 Santa Barbara、 Straw Plaster、 Limestone

二) FAIR-FACED CONCRETE

Interior Wall Fair Faced Concrete 、 Exterior Wall Fair Faced Concrete 、 Mirror Interior Wall Fair Faced Concrete 、 Cave Stone Fair Faced Concrete

三) MICROCEMENT

TeTing microcement 、 Austenite/crystal microcement、 Ultra White microcement 、 Resin microcement、 Zeolite microcement、 Gypsophila microcement

Inorganic lambskin, pearl lambskin

四) AUXILIARY MATERIALS

Primer Universal Protective Agent 、 Microcement Floor Protective Agent

01 STUCCO SERIES

High Strength, Durability For Decades, The Stronger The Style Becomes

SANTA ROSA

Nostalgic historical elements, Spanish countryside, and Classic decorative elements of Southern California style can be used alone as wall finishes.

The wall is smooth with slightly mottled colors, different construction techniques create various artistic effects.

Color:36 specialized colors, can also be customized according to customer requirements, Except for colors that cannot be

modulated by iron oxide pigments to ensure no pollution caused by the mixing of heavy metals.

Living room, bedroom, Public spaces such as corridors

Suitable for basements, wine cellars, etc.



SANTA ROSA

Packaging specification: 25kg/bag

Theoretical coating rate: 2-2.5kg/sqm/2times

Texture: Santa Rosa Smooth 5010S

Santa Rosa Standard 5010M

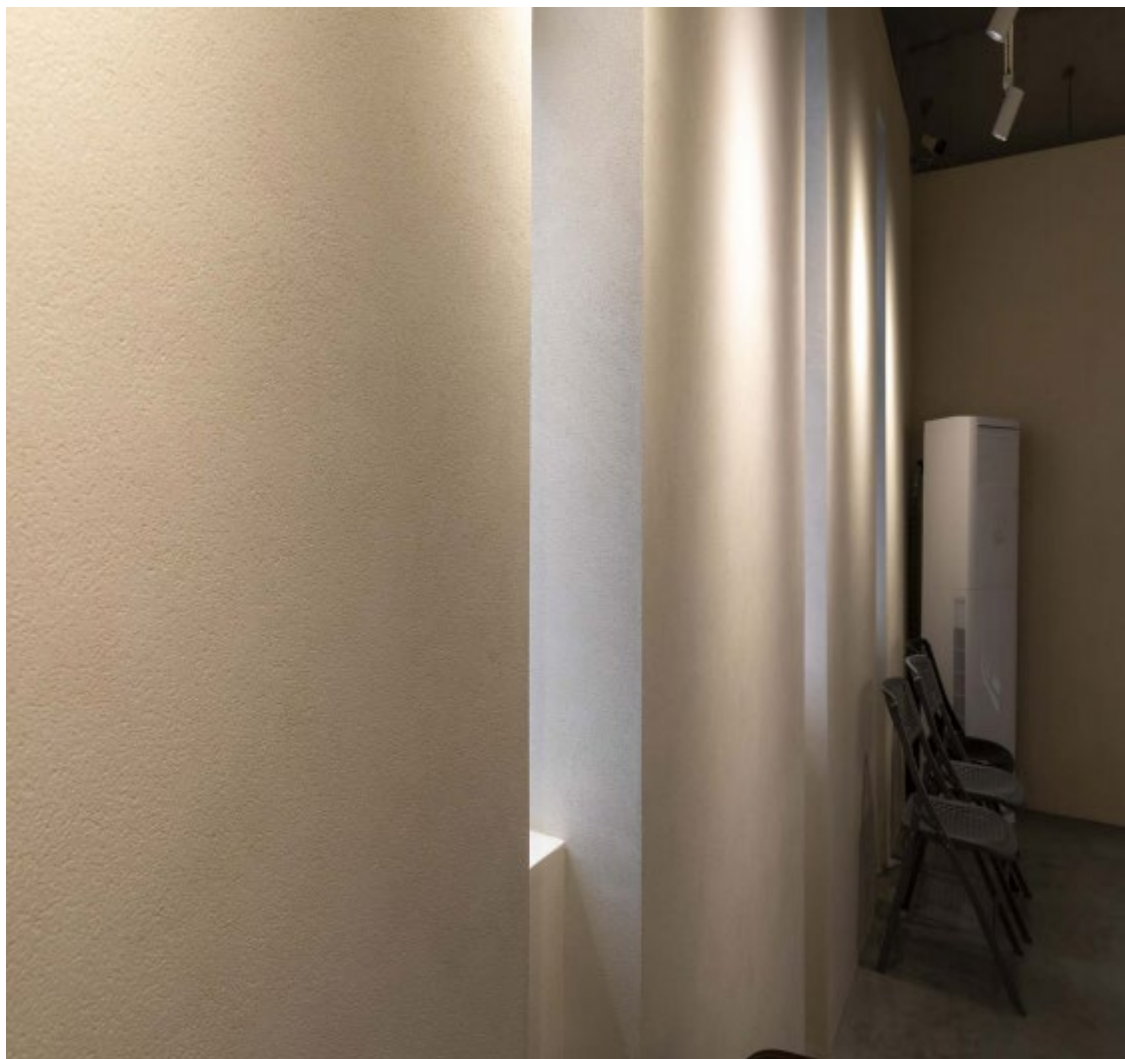
Recommended scope: Public spaces such as living rooms,

Bedrooms, corridors, etc., suitable for basements, wine cellars, etc.

Recommended styles: European, Nordic, modern, American,

Light luxury, new Chinese Countryside,

Mediterranean, etc.





灰泥 圣罗莎 工艺效果展示

*Process effect
display*



平批搓纹
粗中有细，表面平滑



磨砂纹
现代简约，雅致纹理



猫面纹
复古情调，休闲随性



罗马洞石
纹理清晰，质感独特



麻布纹
自然随性，耐看百搭



质感
随意批荡，清晰自然



肌理感
纹路流畅，风格独特



流星效果
立体感强，层次丰富

Construction steps of plaster (flat batch rubbing) Construction technology:

1. Use a short haired roller to evenly apply alkali resistant sealing primer, which is a highly concentrated primer that is colorless and transparent. It penetrates and solidifies the wall very strongly, and the surface drying time is ≤ 2 hours.
2. Evenly apply the mixed STUCCO onto the treated wall using a batch knife. The thickness of STUCCO should be controlled within 1.5mm. During construction, attention should be paid to coordinating multiple people up and down, left and right to avoid gap. The surface drying time should be ≤ 4 hours.
3. When the first layer of STUCCO coating is 60-70% dry (about 4 hours after batch completion), it is best to batch the second layer of STUCCO in a vertical direction. Use a long hair roller to flatten the surface and create the desired texture shape. Surface drying time: ≤ 4 hours.
4. Roll coat or spray 1-2 layers of dust-proof topcoat (mixed with 5%-10% water), and the effect is completed after drying.

Attention: In special environments (referring to severe pollution), dust-proof and waterproof agents can be sprayed on the surface to enhance STUCCO's anti fouling ability.



施工材料 圣罗莎、抗碱透明底漆、STUCCO透明保护漆

施工工具 短毛辊筒、油灰刀、艺术漆不锈钢抹刀、水晶刮板等

案例展示



MARMORINO



Natural plaster of pure natural calcium with extremely fine marble powder
The coating slowly absorbs carbon dioxide from the air and converts it into a sturdy finish similar to marble. Good durability, scrub resistance, delicate coating, and good decorative effect.
Color: 36 specialized colors, can also be customized according to customer requirements. Except for colors that cannot be modulated by iron oxide pigments to ensure no pollution caused by the mixing of heavy metals.

MARMORINO

Packaging specification: 25kg/bag

Theoretical coating rate: 1-1.5kg/sqm/2 times

Recommended scope: Halls of various styles, hotels, home furnishings, shopping centers, exhibition halls.

Recommended styles: New Chinese, Modern, Nordic, Minimalist, Light Luxury, Simplified European, Industrial, etc.

Product advantages:

- 1) Zero formaldehyde, APEO free environmentally friendly product;
- 1) Clean and environmentally friendly, mold and moisture resistant, scratch resistant, durable, delicate sandstone, minimalist luxury;
- 1) Has superior construction performance, especially for large scale construction, resulting in better construction effects, color is always stable no change and color fading.
- 1) Stain and scrub resistant, easy to clean, anti-static surface, will not absorb dust and dirt;
- 1) The fine micro porous structure on the surface has strong breathability and the ability to regulate indoor air humidity.



MARMORINO (Flat Batch Effect) Construction Steps Technological process:



1) Firstly, carry out grassroots inspection and treatment, and perform dry wet and positional testing on the PH value of the grassroots (PH<12, moisture content<20). This product has relatively relaxed requirements for the grassroots, and is suitable for loose and obvious unevenness (>5MM) of the grassroots Cracks (>2MM), oil and other contaminants should be treated and repaired according to technical specifications.

1) Apply primer according to the requirements for primer use (generally diluted 1:6 depending on the wall condition).

1) For the first batch of Marmorino, use a trowel to apply the slurry to the wall, gently collect the slurry (angle>30), without sanding, heavy impact marks, or sand marks. The detailed method of batch production is consistent with the second layer putty method of exterior wall coating.

4) For the second batch of Marmorino, use the trowel to batch smoothly. This batch is the effect surface, and the scraping thickness is one grain of sand thickness. It should be noted that there are no impurities or material adhesion on the surfaces of the high and low blocks.

5) After half an hour of surface drying and pressing operation, surface polishing can be carried out to achieve a brighter luminosity effect. A stainless steel trowel is needed, placed flat, and lightly pressed repeatedly. Pay attention to checking the blade surface and cutting edge for and dents or impurities.

Through our understanding of the product, different operating techniques can create various decorative effects, which require training before implementation.

Travel through time and encounter volcanic rocks.

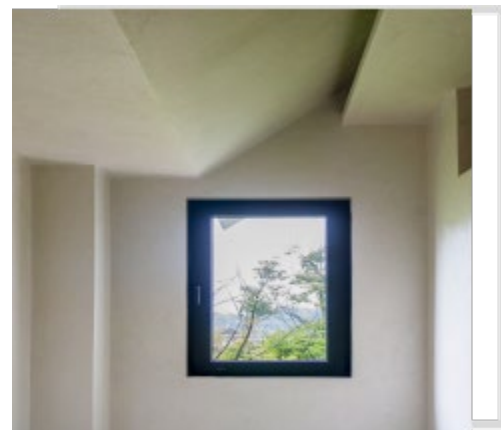


施工材料 抗碱透明底漆、玛莫瑞、STUCCO透明保护剂

施工工具 短毛辊筒、油灰刀、艺术漆不锈钢抹刀、砂纸或打磨机、刷子等

Case Presentation

案例展示



VOLCANIC ROCK PLASTER

Volcanic rock plaster resembling natural holes has a quaint, elegant, and dignified effect, with a unique decorative effect

that can be applied to wall ceilings to achieve an integrated hole decoration effect.

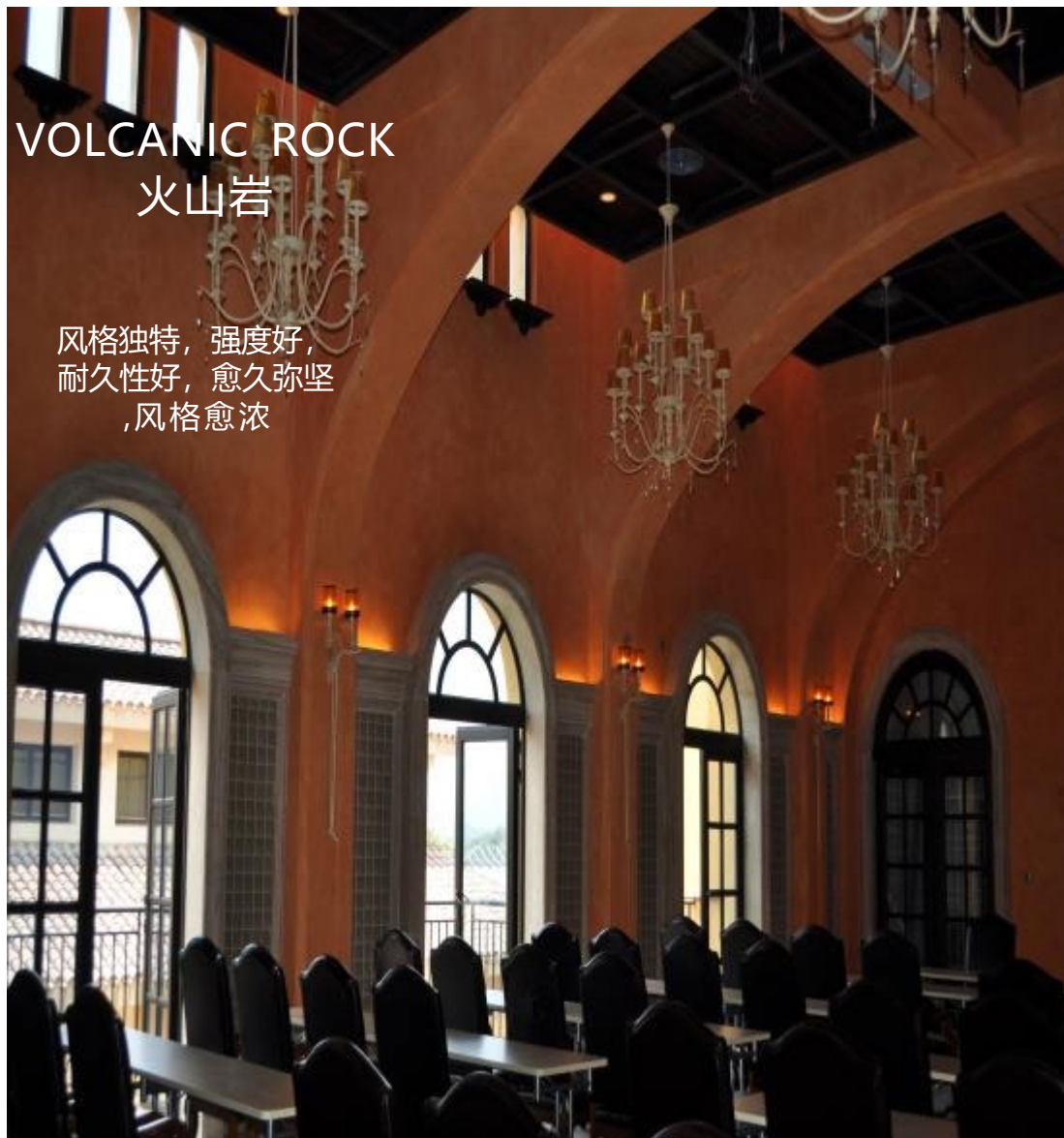
After volcanic rock construction and polishing, it can present

a uniform semi polishing topcoat effect, with rich texture layers, rock like hardness, and long-lasting quality. At the same time, it has certain breathability and waterproofness, rich colors, simple construction, and durability.

VOLCANIC ROCK

Unique style, good strength, good durability, the longer it lasts, the stronger it becomes. The stronger the style, the stronger.





VOLCANIC ROCK PLASTER

。

Packaging specification: 25kg/bag

Theoretical coating rate: 1.5-2.0kg/sqm/ two times

Construction effect: The coating surface presents the effect of volcanic rock pores. If a rubbing process is added, it can transform into more effects.

Scope of application: Halls, museums and other places, suitable for personalized places such as living rooms, coffee bars, etc.

Recommended styles: modern minimalism, light luxury, new Chinese style, Nordic, American countryside, industrial, etc.

Construction: A professional team can produce high artistic effects.

02 Decorative plain concrete

It's extremely brilliant without any makeup.



FAIR-FACED CONCRETE

Simon finished plain concrete STUCCO, abbreviated as plain concrete. A simple yet extremely exquisite and brilliant decorative surface, inspired by the teachings of Zen Buddhism.

Highly creative decorative plaster. Extremely simple to achieve the decorative effect of plain concrete on walls using non plain concrete pouring technology.

Simon's flagship product since 2010. Used on walls, ceilings, and decorations. Color: 8 creative shades of gray. Colors can be customized.

Clear Water Concrete

FAIR-FACED CONCRETE

Packaging specification: 25kg/bag

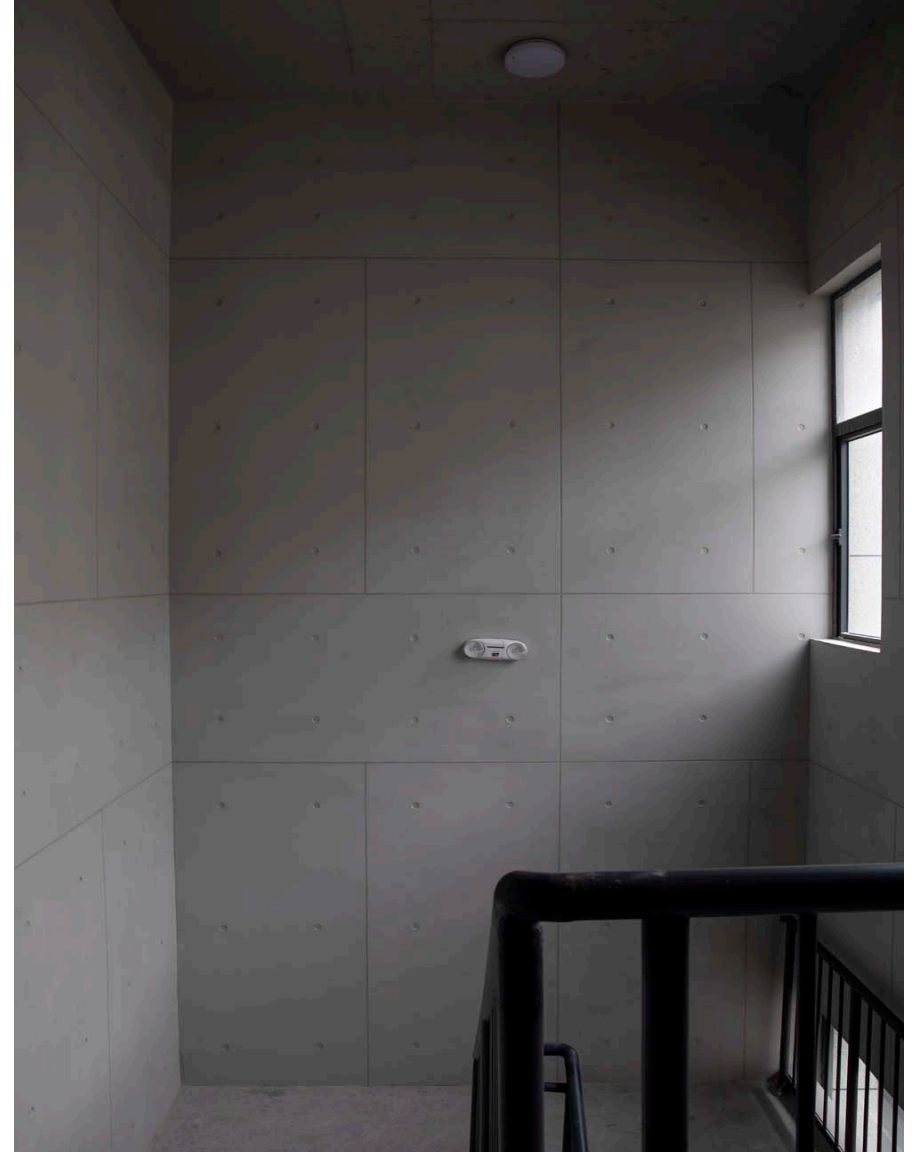
Theoretical coating rate: 2-2.5kg/ sqm /2 times.

Product model: Inner wall plain concrete, outer wall plain concrete, mirror inner wall plain concrete, plain stone

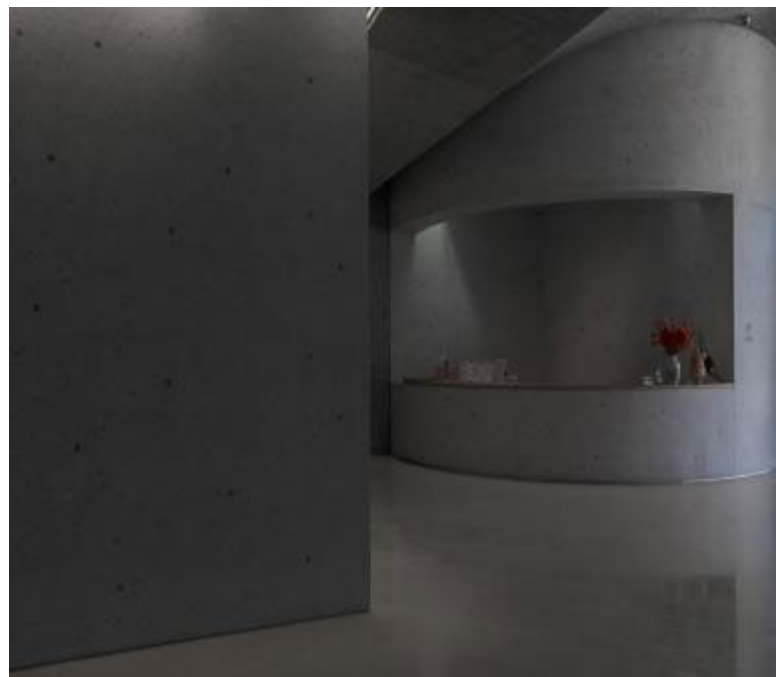
Recommended styles: industrial style, Japanese style, modern style, minimalist style, wabi sabi style, light luxury style, Nordic style Ins wind, etc.

Product advantages:

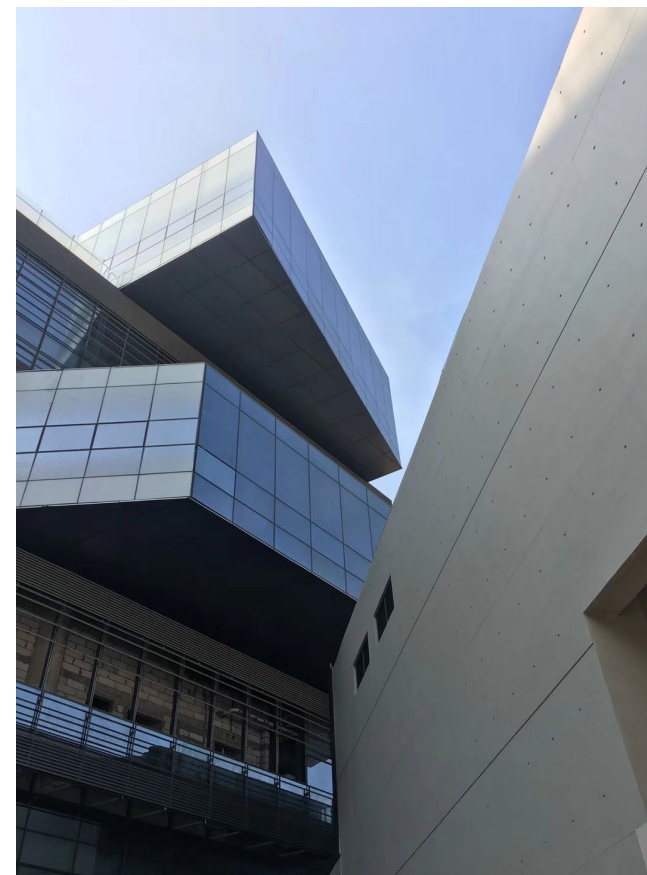
- 1) Rich colors: With a wide variety of colors, it can be flexibly applied to various styles and bring better spatial presentation effects.
- 2) Simple construction: excellent construction performance, large area construction, superior construction effect, and color is always stable no change and color fading.
- 3) Anti stain and scrub resistant: resistant to stains and scrubbing, easy to clean, anti-static surface, does not absorb dust and dirt.
- 4) Trend: The biggest characteristic of minimalism, wabi sabi aesthetics, and industrial style that have become popular in recent years is a return to the essence, simplicity and refinement. Clear concrete conveys this minimalist spirit, which is more specific and vivid.



清水砼案例



不加修饰，却个性时尚
未经雕琢，却以简寓深
始于外表，却终于质感
清水砼，典雅而质朴



03 MICROCEMENT

integrated product of wall, floor and ceiling, ideal material for modern minimalist style .

MICROCEMENT

Microcement presents an elegant decorative effect with a unique visual impact. Very suitable for the needs of modern design, with features such as no cracking, UV resistance, A-level non flammability, mold and moisture resistance, water and dirt resistance, and scratch resistance. Suitable for indoor and outdoor walls, Top and bathroom dry area use. There are specialized varieties that can be used for floors and swimming pools.

Simon, in 2014, launched the integrated wall and floor micro cement Te Ting, the first micro cement research and development manufacturer in China. The chief editor of the first domestic micro cement standard “TCECC10192-2022 Polymer Micro Cement”. After years of development, Simon has developed a comprehensive range of micro water mud products to meet different segmented needs.

Aoli/Crystal Microcement: Unique cement gravel effect, artistic trend product, high hardness, high wear resistance, super strong adhesive force, presenting different colors of gravel, interior and exterior wall and floor finishes. Products in two different color schemes, white and gray. Presenting hand scraping and polishing. The effect can also be polished to a smooth texture with few textures. It is an ideal creative material for architects and interior designers.



Microcement Teting

Packaging specification: Te Ting A B two-component: A: 15kg/pack (powder) B: 5.5kg/barrel (slurry) Crystal/gravel: AB two-component: A:24.5kg/bag(powder) B: 8kg/barrel(slurry)

Theoretical coating rate: (coarse sand) 1.8-2.2kg/sqm/2 times
(fine sand) 1.2-1.6kg/sqm/2 times

Recommended scope: Integrated interior and exterior walls, ceilings, walls, and floors, which can be applied to almost all surfaces that require decoration.

Recommended styles: New Chinese, Modern, Nordic, Minimalist, Light Luxury, Simplified European,, etc.

Construction: Suitable for dedicated designers and construction teams. It can achieve a high artistic effect.

Product advantages:

- 1) Zero formaldehyde, APEO free environment friendly product;
- 2) Clean and environmentally friendly, scratch resistant, durable, delicate sandstone, minimalist luxury.



- 3) The color is natural, blending natural and color elements, with a unique and outstanding texture effect, and its texture is quaint and elegant;
- 4) Better construction performance, large area construction, superior construction effect, and no waste;
- 5) Mold proof and moisture-proof, long-lasting bright paint film, stain resistant and scrub resistant, can shape various personalized texture effects.

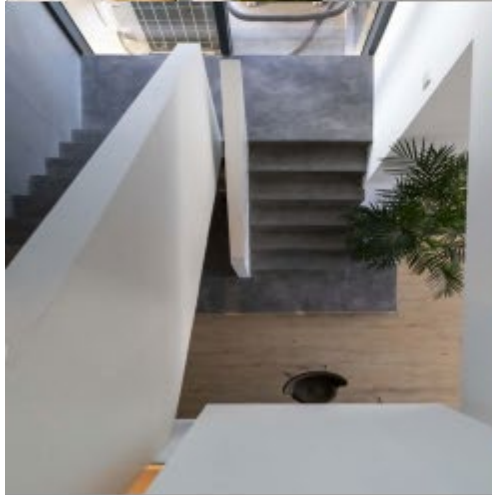
Reminder:

1. Maintenance time: 7 days /25 degree, extended appropriately at low temperatures (not lower than 5 degree) to achieve the desired pain film effect.
2. Storage: Sealed and stored in a cool, dry and well ventilated place, with a storage temperature between 5-35 degree. Pay attention to moisture prevention, sun protection, and antifreeze.
- 3 Shelf life: 36 months.

Mercoment clour



微水泥特汀、奥砾、晶石风格





Ultra White Micro cement



The cement-based products with ultra-white whiteness and clean and beautiful visual effects give the space a pure and comfortable feeling beyond nature, reaching heights that are difficult to inspire. At the same time, they have excellent waterproof and breathable properties, snow-white beauty high hardness, scrub resistance, mold and moisture resistance, crating an exquisite and elegant living space for you.

Product code: 7610, product name: Ultra white micro cement

Theoretical coverage: 1.5-2kg/sqm/2 times

Specifications/barrel: A:20kg . B:7.5kg

Recommended scope: Large area walls, exterior walls, mixed and matched

Recommended styles: New Chinese, modern, Nordic, minimalist, light luxury, simple European, industrial, etc. Warm reminder:

- The primer and protective agent of ultra- white micro cement must be matched with Simon's special products.

REMIN CEMENT

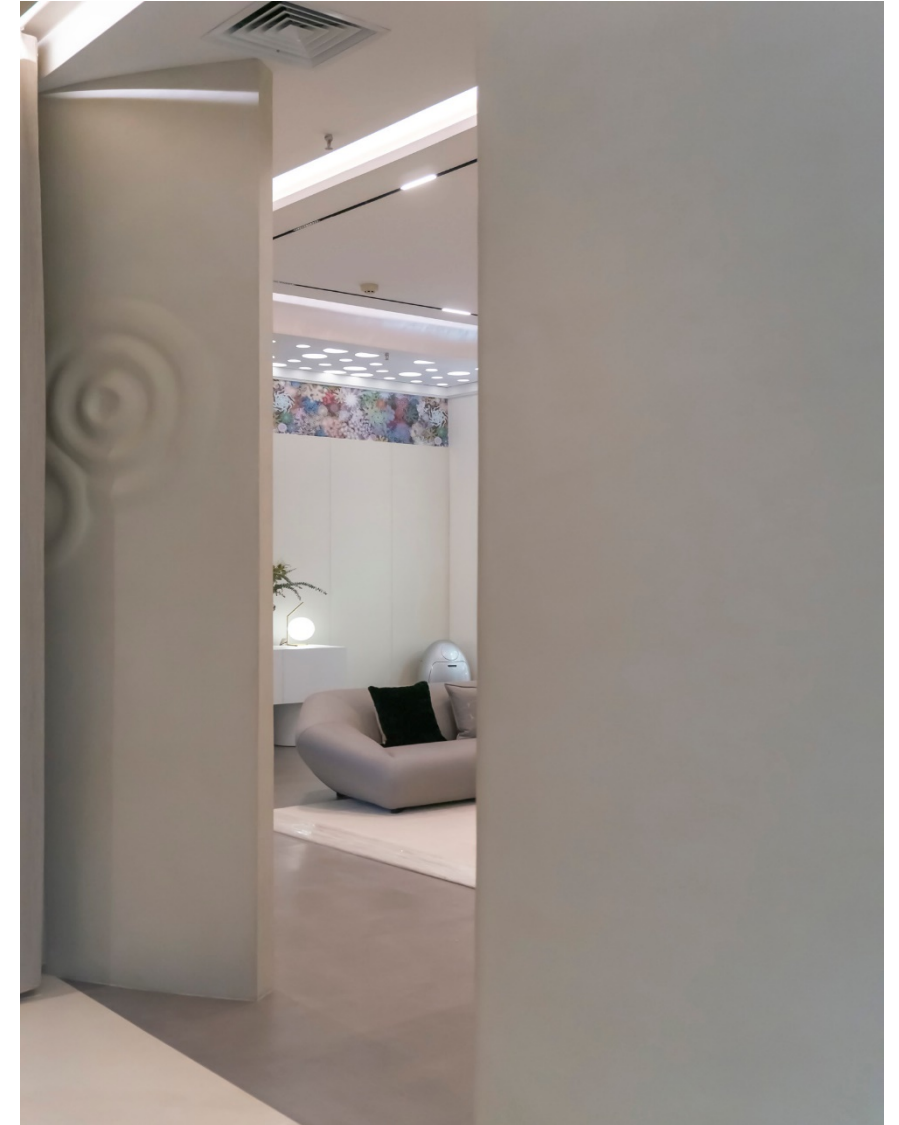


Single component products are ready to use and have excellent properties such as high hardness, good breathability, strong adhesion, scratch resistance, and no fading during construction. Delicate micro cement texture, pure color tone.

Application area: Suitable for interior and exterior walls and ceilings, allowing the space to showcase a high-end and luxurious texture. It can meet the decoration needs of various spaces and different customers, effectively enhancing the overall design, and is the preferred choice for creating minimalist, industrial, and wabi sabi styles. The paint film is long-lasting and bright, easy to apply, and very suitable for large-scale construction.

Construction: Suitable for dedicated teams and DIY creativity.

Model: resin micro cement Xilu90 mesh, 70 mesh.



RESIN CEMENT

Resin micro cement

Packaging specifications: 5kg/barrel, 25kg/barrel

Theoretical coating rate: 1.0-1.2sqm/kg/2 times

Recommended scope: Large area walls, exterior walls, ceilings

Recommended styles: simple European, light luxury, neoclassical, modern minimalist, etc.

Product features and advantages:

Appearance: Cement matrix texture, iridescent texture, strong refractive index;

Easy construction: simple construction, no interface for repair;

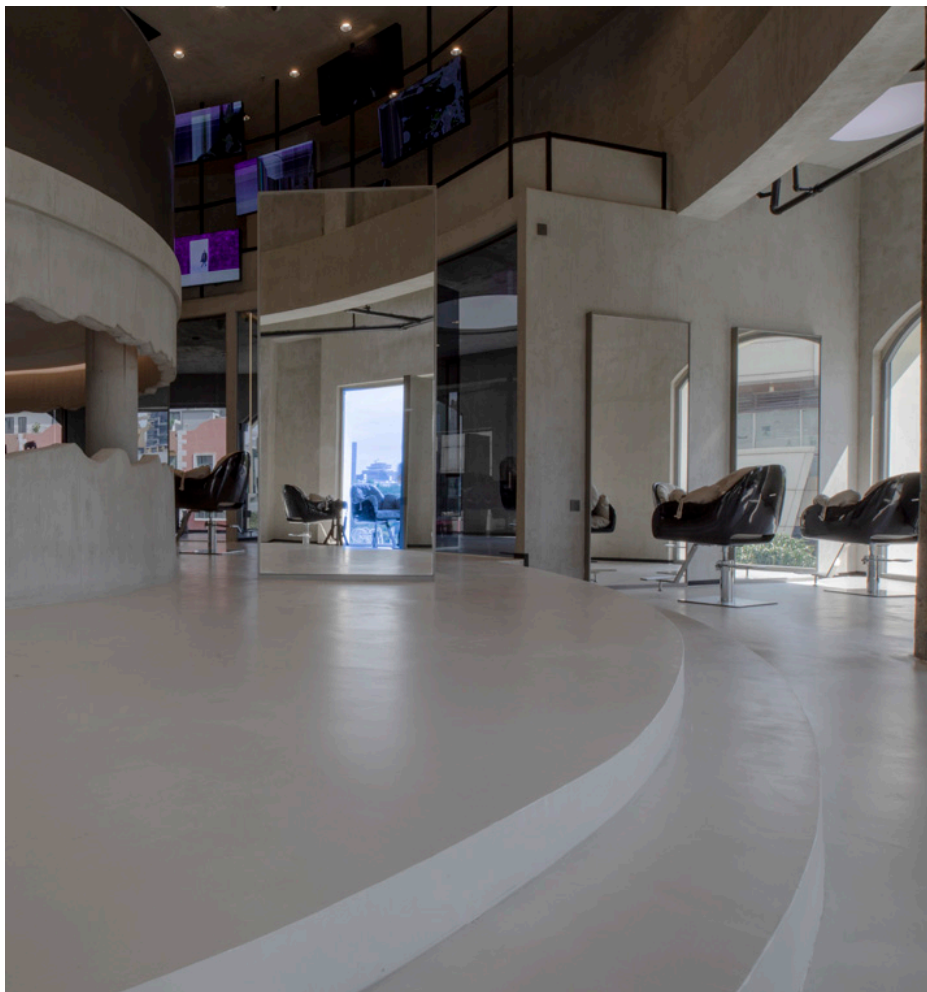
High hardness: The paint film is long-lasting and bright, with high hardness, scratch resistance, and scrub resistance.

Matte texture: The perfect combination of sand and velvet, with a matte texture and a smooth and delicate feel.



Resin micro cement sub stone

Prague Art Paint



Resin micro cement specifically designed for ground can be colored modulation in the factory and ready to use. Simply add a curing agent to the mixture before use and it can be applied.

It can reach a usable state within 24 hours after construction, with high hardness, high bonding strength, easy repair, uniform surface color, and less mottled feeling. It can be applied to concrete, tiles, mosaics, and various types of boards. It is an iterative product of traditional two-component micro cement.

This product has simple construction, strong three-dimensional texture, unique style, and excellent performance such as no cracking, high hardness, scrub resistance, mold and moisture resistance, durability, and covering small cracks on the wall.

Usage: Used on the surface of the ground and decorative objects, only suitable for public spaces on the ground where pedestrians walk, office spaces, commercial spaces, and homes.

Resin micro cement sub stone art paint

Packaging specifications: 20kg main material +0.8kg companion (curing agent)

Theoretical coating rate: 1.5-2 sqm/kg 2 times

Product ingredients: natural minerals, multifunctional additives, lotion.

Recommended scope: Suitable for large-area, wall and floor decoration

Recommended styles: minimalist, modern, Nordic, light luxury, new Chinese style, modern minimalism, etc.

Product features and advantages:

Fabric texture, delicate touch, strong three-dimensional effect, versatile and elegant;

Easy construction: no knots, no fading;

Scratch resistant: can withstand up to 3W scrubbing cycles of more;

Diversified effects: can be used as texture paint, smoothing effect, etc.



Construction tools: short haired roller, batch knife, polishing machine, 80 grit sandpaper.

Supporting materials: Art paint alkali resistant primer, Art paint sub stone +sub stone companion, clean and dust-proof topcoat

Construction technology:

1. Before construction, inspect the base layer to ensure that it is solid, dense, flat, and the surface is clean and tidy;
2. Roll coated art paint alkali resistant primer (mixed with 20%-30% water) once, surface dry for 4-6 hours;
3. Scape the resin microcement once and let it dry on the surface for 4-6 hours;
4. Scape resin microcement twice, density can be determined according to personal preference, surface dry 4-6 hours;
5. After drying, roll apply 1-2 times of dust-proof topcoat (optional) .

Matters needing attention:

1. It is recommended to use sandpaper to polish the newly opened textured art comb before use to prevent clumping during construction;
2. During construction, pay attention to keeping the texture and artistic teeth comb clean and free of material accumulation to avoid clumping.

Gypsophila (babysbreath) microcement

Simon's pioneering multi-color star resin microcement breaks the limitations and bland style of single color microcement, and extends the use of microcement to households, paying special attention to the warmth and intergenerational feeling of the family.

Star Sparkling Art Paint is a delicate matte texture product with rich colors, simple texture, exquisite and low-key. Under the illumination of light, the effect is as bright as stars, shining

Brightly, making the space extremely dreamy with starry sky colors.

The soft color and skin like touch, combined, with various combinations, give a romantic and warm feeling. It has a soft touch and high hardness, and is resistant to scrubbing, easy to clean, and has a particular long durability time.

Application area: The walls and ceilings of homes, public places, hotels, coffee shops, and other atmospheric places have specialized varieties that can be used on the ground and in swimming pools.



爱上家，爱上满天星。

微水泥以独特的视觉冲击，呈现优雅的装饰效果。非常适合现代设计的需求，具有不开裂、抗紫外线、A级不燃、防霉防潮、耐水耐污、耐擦刮等特征。适合在室内外墙面、顶面、卫生间干区使用。有专门的品种可以用于地面及泳池。

西蒙，2014年推出墙地一体化微水泥特汀，国内首家微水泥研发制造商。国内首部微水泥标准《T/CECS10192-2022聚合物微水泥》标准主编单位。

2023年推出极简墙面树脂微水泥西卢，2024年原创复色彩星树脂微水泥满天星，地面树脂微水泥亚石，地面树脂微水泥满天星亚石。

满天星一直备受人们的喜欢，给人的感觉极其清纯和浪漫。无数朵的满天星聚集在一起，就像夜空中的众多繁星，给人一种温柔动人之美。



Glittering light, shining like stars.

Falling in love with home, falling in love with stars all over the sky. Microcement presents an elegant decorative effect with its unique visual impact. Very suitable for the needs of modern design, with features such as no cracking, UV resistance, A-level non flammability, mold and moisture resistance, water and dirt resistance, and scratch resistance. Suitable for use on indoor and outdoor walls, ceilings, and dry areas of bathrooms. There are specialized varieties that can be used for floors and swimming pools.

Simon, in 2014, launched the integrated wall and floor micro cement Te Ting, the first micro cement research and development manufacture in China. The chief editor of the first domestic micro cement standard "T/CECS10192-2022 Polymer Micro Cement".

In 2023, the minimalist wall resin micro cement Xilu will be launched. In 2024, the original multi-color star resin micro cement starry sky, floor resin microcement sub stone, and floor resin micro cement starry sky sub stone will be created.

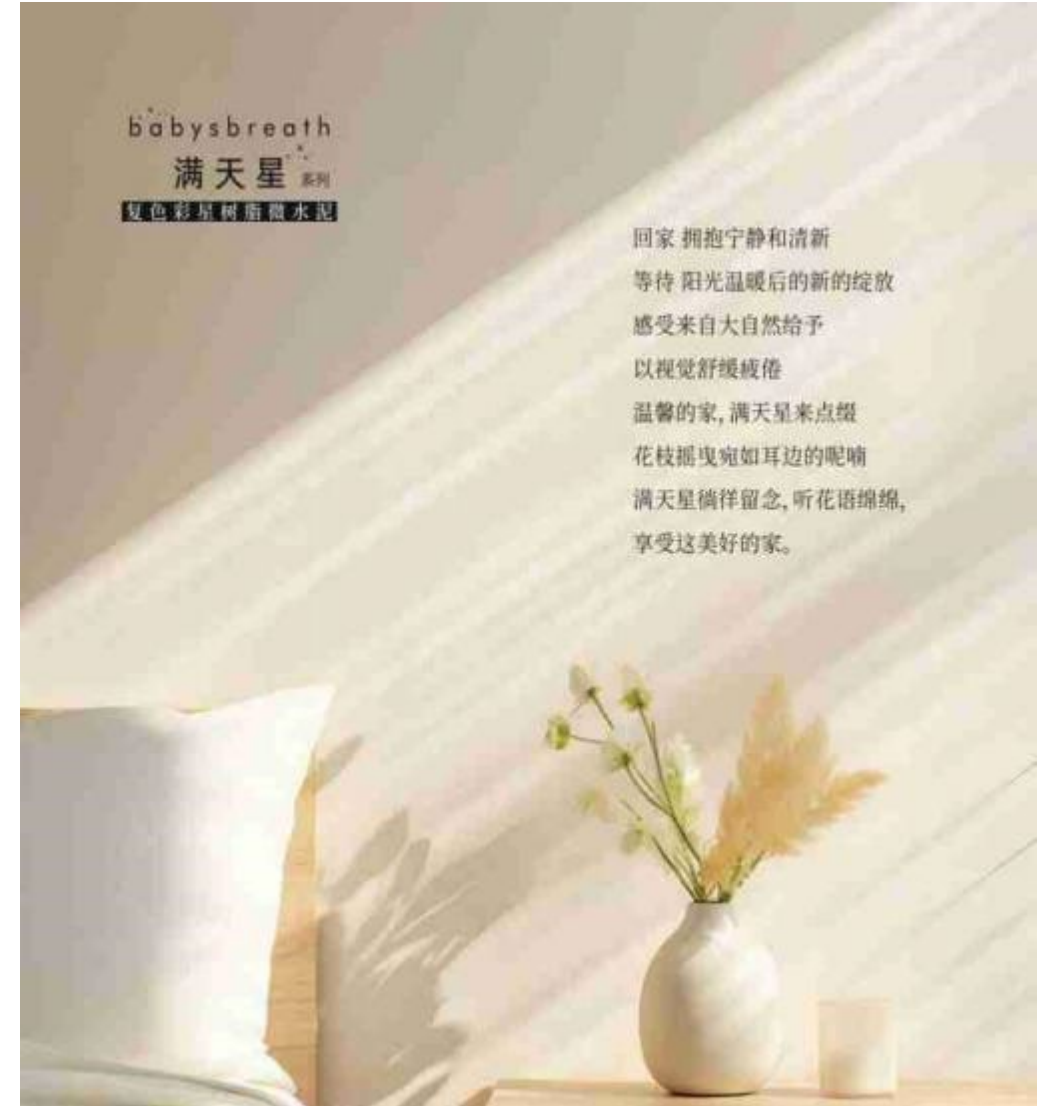
Starry Sky has always been loved by people, giving a feeling of extreme purity and romance. Countless stars gather together, like numerous stars in the night sky, giving people a gentle and charming beauty.

Babysbreath microcement

- Packaging specifications: 5kg/barrel, 25KG/barrel • Theoretical coating rate: 1.0-.5m²/kg/2 coats
- Recommended scope: large area walls, ceiling • Recommended style: Nordic, modern, American, light luxury new Chinese style, etc.
 - Product highlights: • Matte texture, rich colors
 - Simple texture, delicate and low-key



Scan the QR code to watch the construction video



Construction steps and tools for Gypsophila (Babysbreath) microcement art paint

Construction tools: short haired roller, artistic paint brush, polishing machine, sandpaper.

Supporting materials: alkali resistant primer, starry Gypsophila microcement, matte surface protector.

Construction technology.

1. Before construction, check the base layer to ensure that the putty layer is dry, dense, flat, and the surface is clean and tidy
2. Roll coated art paint resistant primer (mixed with 20%-30% water) once, surface dry for 4-6 hours;
3. Scrape one Gypsophila of sand with a thickness of one layer, and let it dry on the surface for 4-6 hours;
4. After the watch dries, repeat the first batch scraping process for the second time to achieve the effect of twinkling stars.
5. After drying thoroughly, apply a matte finish evenly twice (using a rolling and rolling technique to evenly cover the surface with the topcoat). Matters needing attention:

1. Construction: Specialized team, capable of DIY creativity.

Specialized training and plans are required for the construction of special places such as floors and swimming pools.

2. When constructing large walls, try to minimize joints by simultaneously construction one wall at a time.

Babysbreath Microcement colour



CERAMIC PAINT

-A highly smooth luxury experience, light luxury and simplicity, showcasing extraordinary wonderful life. This product has super strong adhesion, wear resistance and scratch resistance, high hardness, oil resistance, stain resistance, good self-cleaning performance, crack resistance and flexible coating, which can be applied to almost all surfaces for new and re coating. It is widely used in hospitals, laboratories, schools and other places with high cleanliness

requirements. Many consumers use it to reapply old coatings and replace them with new ones, hence it is also known as “magic paint”.

Usage: Used as a coating material for hospital laboratories and various high requirements. Used for color modification and recoating of existing coatings. Painting of walls, floors, and ceilings.





CERAMIC PAINT

。Packaging specifications: 6kg/group,
20kg/group

Theoretical coating rate:
10sqm/kg/2times

Recommended scope: Used for hospital
laboratories and various high demand
coating materials.

Used for color modification and
recoating of existing coatings.

Painting of wall, floors, and ceilings, etc.

Recommended styles: Chinese, classical,
Nordic, modern, European, industrial
style, etc.

瓷化漆产品手册

Nano Ceramic Point

纳米瓷化漆

产品特点：

- 1. 优异的耐污性能
- 2. 优异的耐划伤性能
- 3. 优异的耐老化性能
- 4. 优异的耐酸碱性能
- 5. 优异的耐盐雾性能
- 6. 优异的耐霉菌性能
- 7. 优异的耐油污性能
- 8. 优异的耐水性能
- 9. 优异的耐盐结晶性能
- 10. 优异的耐盐析性能
- 11. 优异的耐盐垢性能
- 12. 优异的耐盐渍性能
- 13. 优异的耐盐斑性能
- 14. 优异的耐盐痕性能
- 15. 优异的耐盐锈性能
- 16. 优异的耐盐蚀性能
- 17. 优异的耐盐剥落性能
- 18. 优异的耐盐脱落性能
- 19. 优异的耐盐脱落性能
- 20. 优异的耐盐脱落性能

医用抗菌防污瓷化漆

产品特点：

- 1. 优异的抗菌性能
- 2. 优异的防污性能
- 3. 优异的耐老化性能
- 4. 优异的耐酸碱性能
- 5. 优异的耐盐雾性能
- 6. 优异的耐霉菌性能
- 7. 优异的耐油污性能
- 8. 优异的耐水性能
- 9. 优异的耐盐结晶性能
- 10. 优异的耐盐析性能
- 11. 优异的耐盐垢性能
- 12. 优异的耐盐渍性能
- 13. 优异的耐盐斑性能
- 14. 优异的耐盐痕性能
- 15. 优异的耐盐锈性能
- 16. 优异的耐盐蚀性能
- 17. 优异的耐盐剥落性能
- 18. 优异的耐盐脱落性能
- 19. 优异的耐盐脱落性能
- 20. 优异的耐盐脱落性能

Nano Ceramic Point

纳米瓷化漆

产品特点：

- 1. 优异的耐污性能
- 2. 优异的耐划伤性能
- 3. 优异的耐老化性能
- 4. 优异的耐酸碱性能
- 5. 优异的耐盐雾性能
- 6. 优异的耐霉菌性能
- 7. 优异的耐油污性能
- 8. 优异的耐水性能
- 9. 优异的耐盐结晶性能
- 10. 优异的耐盐析性能
- 11. 优异的耐盐垢性能
- 12. 优异的耐盐渍性能
- 13. 优异的耐盐斑性能
- 14. 优异的耐盐痕性能
- 15. 优异的耐盐锈性能
- 16. 优异的耐盐蚀性能
- 17. 优异的耐盐剥落性能
- 18. 优异的耐盐脱落性能
- 19. 优异的耐盐脱落性能
- 20. 优异的耐盐脱落性能

墙地一体瓷化漆

产品特点：

- 1. 优异的耐污性能
- 2. 优异的耐划伤性能
- 3. 优异的耐老化性能
- 4. 优异的耐酸碱性能
- 5. 优异的耐盐雾性能
- 6. 优异的耐霉菌性能
- 7. 优异的耐油污性能
- 8. 优异的耐水性能
- 9. 优异的耐盐结晶性能
- 10. 优异的耐盐析性能
- 11. 优异的耐盐垢性能
- 12. 优异的耐盐渍性能
- 13. 优异的耐盐斑性能
- 14. 优异的耐盐痕性能
- 15. 优异的耐盐锈性能
- 16. 优异的耐盐蚀性能
- 17. 优异的耐盐剥落性能
- 18. 优异的耐盐脱落性能
- 19. 优异的耐盐脱落性能
- 20. 优异的耐盐脱落性能

抗刮划瓷化漆

产品特点：

- 1. 优异的耐刮划性能
- 2. 优异的耐污性能
- 3. 优异的耐老化性能
- 4. 优异的耐酸碱性能
- 5. 优异的耐盐雾性能
- 6. 优异的耐霉菌性能
- 7. 优异的耐油污性能
- 8. 优异的耐水性能
- 9. 优异的耐盐结晶性能
- 10. 优异的耐盐析性能
- 11. 优异的耐盐垢性能
- 12. 优异的耐盐渍性能
- 13. 优异的耐盐斑性能
- 14. 优异的耐盐痕性能
- 15. 优异的耐盐锈性能
- 16. 优异的耐盐蚀性能
- 17. 优异的耐盐剥落性能
- 18. 优异的耐盐脱落性能
- 19. 优异的耐盐脱落性能
- 20. 优异的耐盐脱落性能

抗涂鸦保护漆

产品特点：

- 1. 优异的抗涂鸦性能
- 2. 优异的耐污性能
- 3. 优异的耐老化性能
- 4. 优异的耐酸碱性能
- 5. 优异的耐盐雾性能
- 6. 优异的耐霉菌性能
- 7. 优异的耐油污性能
- 8. 优异的耐水性能
- 9. 优异的耐盐结晶性能
- 10. 优异的耐盐析性能
- 11. 优异的耐盐垢性能
- 12. 优异的耐盐渍性能
- 13. 优异的耐盐斑性能
- 14. 优异的耐盐痕性能
- 15. 优异的耐盐锈性能
- 16. 优异的耐盐蚀性能
- 17. 优异的耐盐剥落性能
- 18. 优异的耐盐脱落性能
- 19. 优异的耐盐脱落性能
- 20. 优异的耐盐脱落性能



04 AUXILIARY MATERIALS

Primer Universal Protective Agent 、 Microcement Floor Protective Agent

Plaster and fair-faced concrete primer

Plaster and fair-faced concrete primer

- 1) Alkali resistant primer F301 (suitable for interior walls), F307 (suitable for interior and exterior walls)
- 2) Colored primer F100 (suitable for interior and exterior walls)

Protective agents for plaster and plain concrete

- 1) Transparent protective agents P300 and P500 are suitable for 30 degrees on interior and exterior walls
- 2) Transparent matte protector P2470 is suitable for 3-6 degrees gloss on interior and exterior walls.
- 1) Transparent matte protector P2472 is suitable for interior and exterior walls with a 3 degrees gloss.

Packaging specification: 18kg/barrel

Theoretical coating rate: 8-10sqm/kg/time

Construction process: roller coating, brush coating or spray coatings.

Dilution ratio: Dilute with water 20%-30%



Product advantages:

Strong adhesion, adhesion, sealed and alkali resistant
Strengthen the adhesion between art paint and base layer
Improve the quality of artistic paint construction

Microcement primer and topcoat

Wall surface (primer/topcoat)

- 1) Alkali resistant primer F301 (suitable for interior walls), F307 (suitable for interior and exterior walls)
- 2) Colored primer F100 (suitable for interior and exterior walls)
- 3) Transparent matte protector P2470 is suitable for 3-6 degrees gloss on interior and exterior walls
- 4) Transparent matte protector P2472 is suitable for interior and exterior walls with a 3 degrees gloss

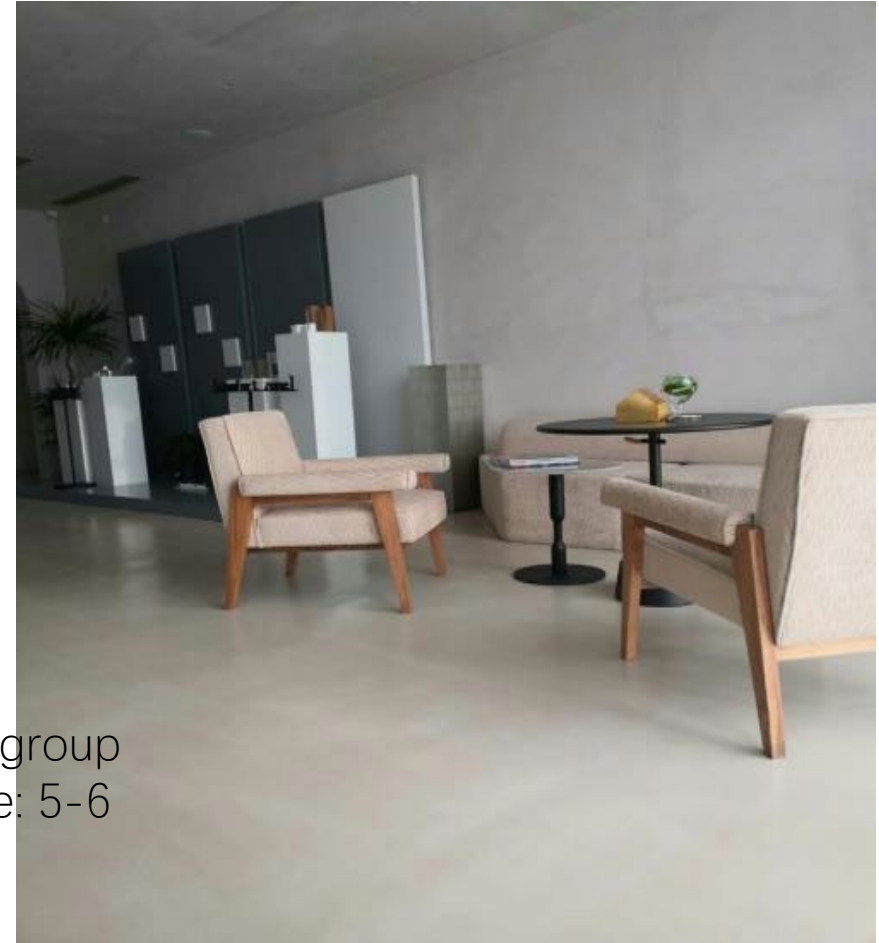
Ground (primer/topcoat)

- 1) Concrete penetrating primer F607, sand adhesive primer F308
- 2) PR interface agent
- 3) Matte protectant super wear-resistant 2990, semi matte Protectant 2992

Packaging specifications: primer 18kg/barrel, topcoat 6kg/group, 20kg/group
Effect type: Matte, Eggshell Light, Sand containing Theoretical coating rate: 5-6 sqm/kg/2times

Construction process: roller coating, brush coating or spray coating

Dilution ratio: Dilution with 10%-20% water (do not add water unless necessary)



Composite color paste

Composite color paste is a popular personalized color paste in Europe , with the best environmental quality.

Its product formula does not contain toxic or harmful substances to human health and the environments, Volatile organic compounds (VOC Low) are approaching zero.

and there will be no solvent evaporation during use and drying of formula are fully biodegradable and environmentally friendly.

The dispersing system in the formula ensures its compatibility with most decorative coatings and coatings. This product is suitable for blending various types of water-based coatings and surface coatings.

The composite color paste comes with a functional packaging with a measuring lid, which is easy to operate and can be added drop by drop to avoid waste. It also allows users without any color mixing experience to freely select the desired color.

Advantages of color paste

Water based environmental protection, easy operation, efficient color matching, accurate color matching, avoiding waste.

Has good storage stability, good coloring power, and no clumping

Present different popular color tones according to different addition amounts.

Good dispersibility and excellent compatibility with art coatings and other decorative coatings.



序号	品名	颜色	比重	规格/罐
1	NATO Blue	A10、 A30	/	250ml
2	Deep sea ash	A10、 A20	/	250ml
3	chestnut Green	A10、 A30	/	250ml
4	pumpkin Green	A20、 A40	/	250ml
5	Cement ash	A03、 A10、 A14	/	250ml
6	Onion white	A10、 A20、 A30、 A50	/	250ml
7	Madeira ocher	A10、 A20、 A30、 A40	/	250ml
8	Van Dyck Brown	A10、 A20	/	250ml
9	golden red	A10、 A20	/	250ml
10	Marble Blue	A10	/	250ml
11	Cinnamon brown	A10	/	250ml
12	Classical Red A	/	/	250ml



simon 西蒙
SINCE 1998

THANK YOU